

UNITED STATES
DEPARTMENT OF THE INTERIOR
GEOLOGICAL SURVEY

PETERSBURG (D-3) QUADRANGLE
ALASKA
1:63 360 SERIES (TOPOGRAPHIC)



Mapped, edited, and published by the Geological Survey
Control by USGS and USC&GS

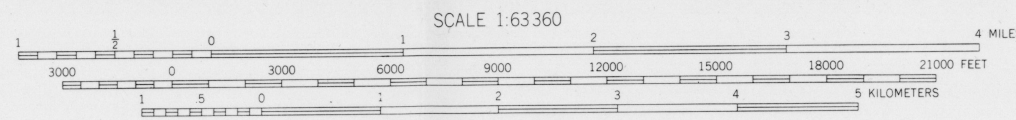
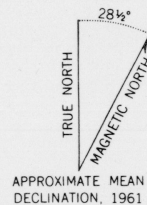
Topography by photogrammetric methods from aerial photographs
taken 1948, field annotated 1961. Map not field checked

Selected hydrographic data compiled from USC&GS
Charts 8170 (1963) and 8201 (1964). This information is
not intended for navigational purposes

Universal Transverse Mercator projection, 1927 North American datum
10,000-foot grid based on Alaska coordinate system, zone 1
1000-meter Universal Transverse Mercator grid ticks,
zone 8, shown in blue

Gray land lines represent unsurveyed and unmarked locations
from computations by the State of Alaska, Division of Lands
Copper River Meridian

Swamps, as portrayed, indicate only the wetter areas,
usually of low relief, as interpreted from aerial photographs



CONTOUR INTERVAL 100 FEET
DOTTED LINES REPRESENT 50-FOOT CONTOURS
DATUM IS MEAN SEA LEVEL

SHORELINE SHOWN REPRESENTS THE APPROXIMATE LINE OF MEAN HIGH WATER
THE MEAN RANGE OF TIDE IS APPROXIMATELY 13 FEET

- LEGEND**
- Wilderness Boundary
 - National Forest Boundary
 - Alienated Land within Wilderness Boundary
 - Power Withdrawals within Wilderness Boundary

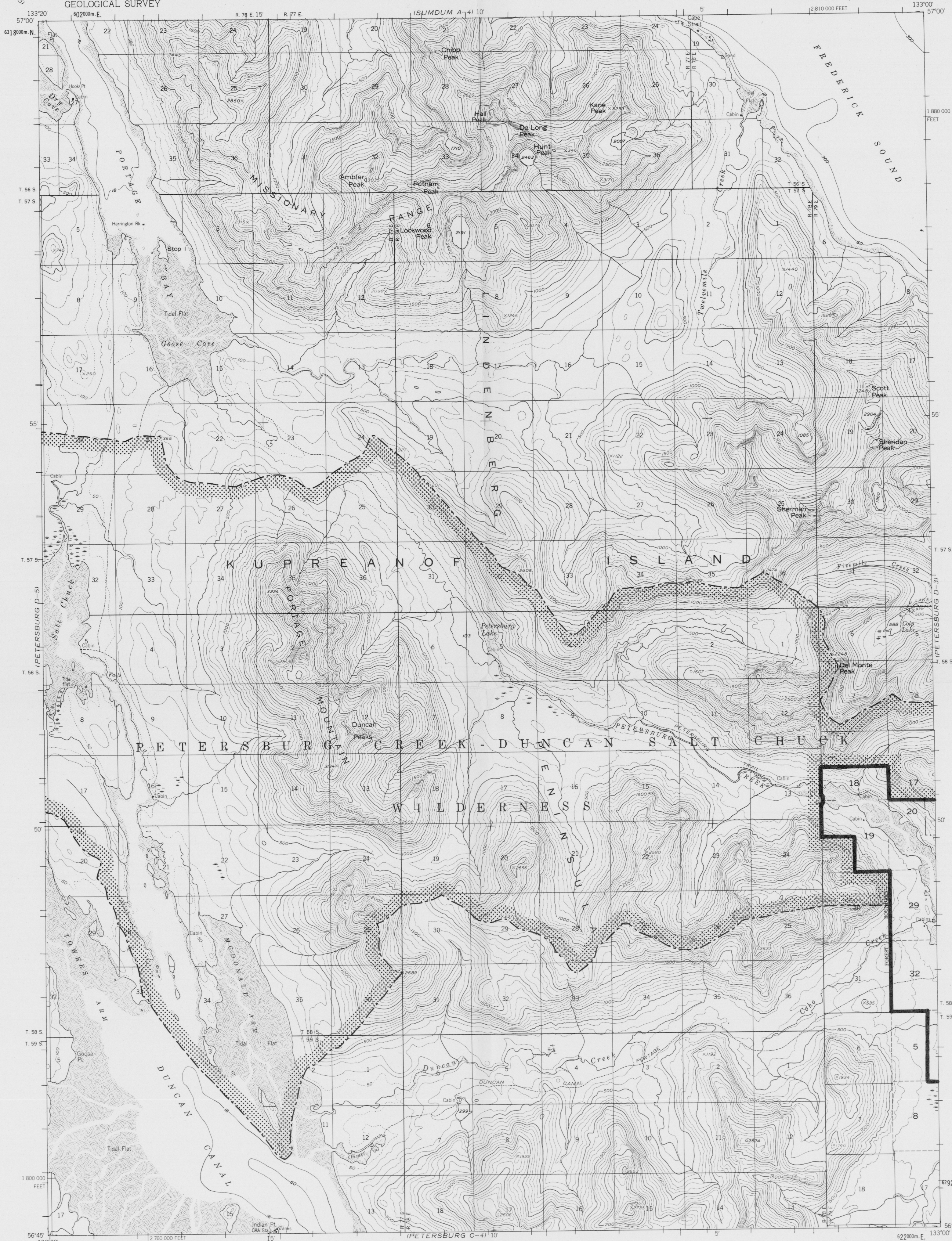
The Wilderness includes only
the Public lands, islands, islets,
rocks, and pinnacles above mean
high tide within the exterior
boundary.

PETERSBURG (D-3), ALASKA
N5645 - W13240/15X20

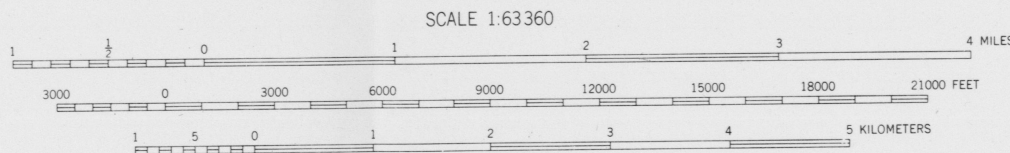
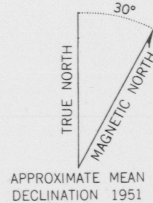
The exterior boundary of Petersburg Creek-Duncan
Salt Chuck Wilderness, Tongass National Forest,
Alaska Region, June 1, 1981 as covered in the
National Wilderness Preservation System by the
Act of December 2, 1980.

UNITED STATES
DEPARTMENT OF THE INTERIOR
GEOLOGICAL SURVEY

PETERSBURG (D-4) QUADRANGLE
ALASKA
1:63 360 SERIES (TOPOGRAPHIC)



Mapped, edited, and published by the Geological Survey
Control by USGS and USC&GS
Topography by photogrammetric methods from aerial photographs
taken 1948, field annotated 1951. Map not field checked.
Selected hydrographic data compiled from USC&GS Chart 8201
(1:217 828 scale, 1957) and from aerial photographs. This
information is not intended for navigational purposes.
Universal Transverse Mercator projection, 1927 North American Datum
10,000-foot grid based on Alaska coordinate system, zone 1
1000-meter Universal Transverse Mercator grid ticks,
zone 8, shown in blue.
Land lines represent unsurveyed and unmarked locations
predetermined by the State of Alaska, Division of Lands
Copper River Meridian.
Swamps, as portrayed indicate only the wetter areas,
usually of low relief, as interpreted from aerial photographs.
Entire land area is within the Tongass National Forest
except the Petersburg exclusion area.



CONTOUR INTERVAL 100 FEET
DASHED LINES REPRESENT 50-FOOT CONTOURS
DATUM IS MEAN SEA LEVEL
DEPTH CURVES IN FEET-DATUM IS MEAN LOWER LOW WATER
SHORELINE SHOWN REPRESENTS THE APPROXIMATE LINE OF MEAN HIGH WATER
THE RANGE OF TIDE IS APPROXIMATELY 13 FEET

- LEGEND**
- Wilderness Boundary
 - National Forest Boundary
 - Alienated Land within Wilderness Boundary
 - Power Withdrawals within Wilderness Boundary

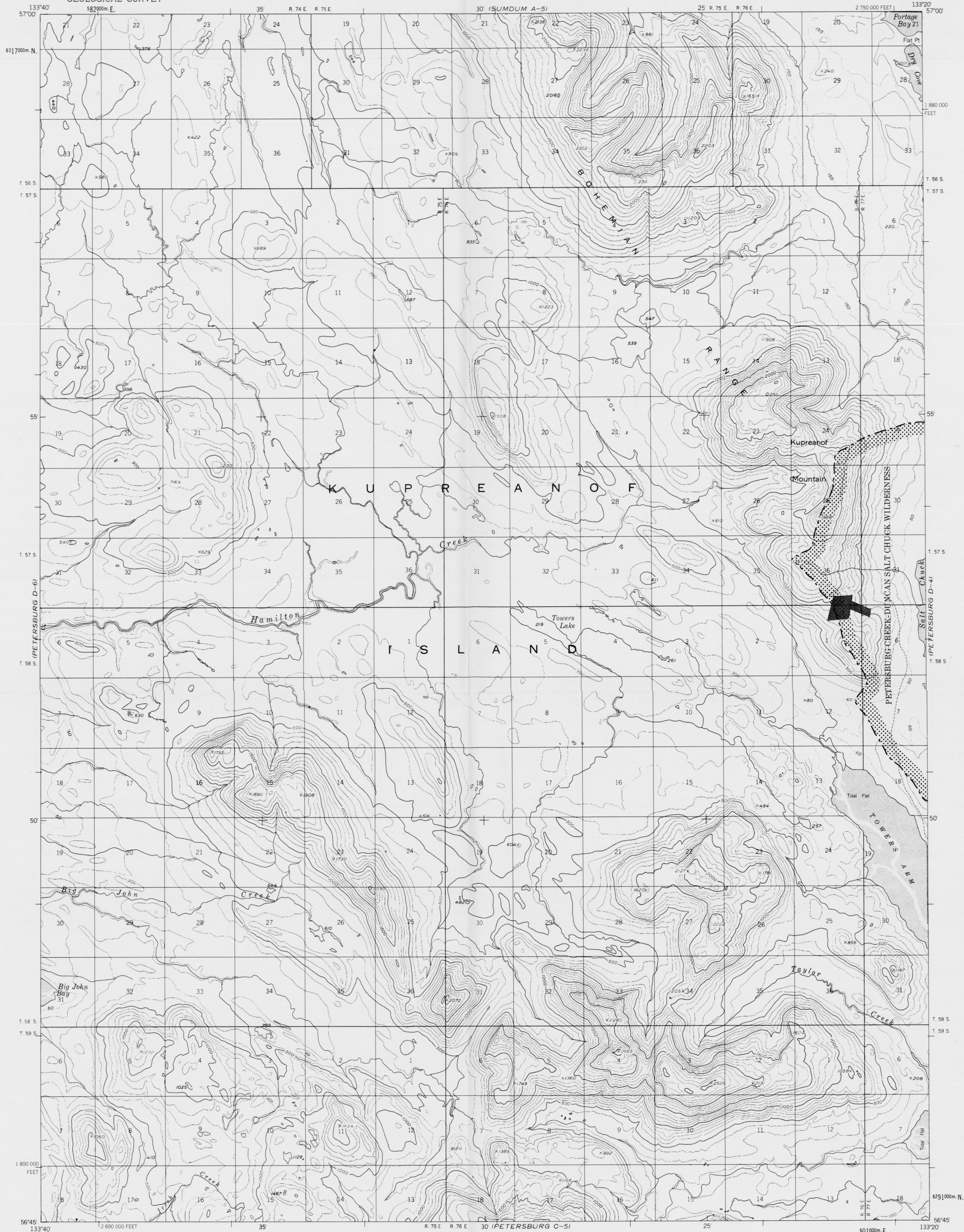
The Wilderness includes only
the Public lands, islands, islets,
rocks, and pinnacles above mean
high tide within the exterior
boundary.

PETERSBURG (D-4), ALASKA
N5645—W13300/15X20

The exterior boundary of Petersburg Creek-Duncan
Salt Chuck Wilderness, Tongass National Forest,
Alaska Region, June 1, 1981 as covered into the
National Wilderness Preservation System by the
Act of December 2, 1980.

UNITED STATES
DEPARTMENT OF THE INTERIOR
GEOLOGICAL SURVEY

PETERSBURG (D-5) QUADRANGLE
ALASKA
1:63 360 SERIES (TOPOGRAPHIC)



Mapped, edited, and published by the Geological Survey
Control by USGS

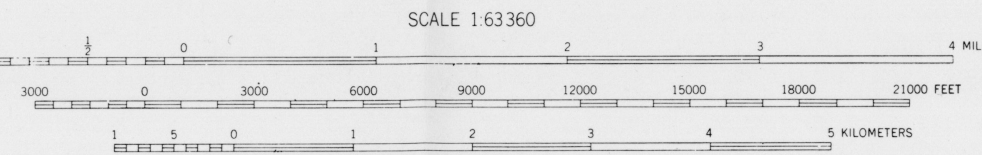
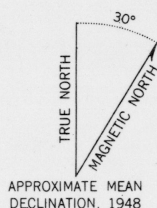
Topography by photogrammetric methods from aerial photographs
taken 1948. Map not field checked
Selected hydrographic data compiled from USC&GS
Chart 8201 (1:217 828 scale, 1957). This information is not
intended for navigational purposes

Universal Transverse Mercator projection, 1927 North American Datum
10 000-foot grid based on Alaska coordinate system, zone 1
1000-meter Universal Transverse Mercator grid ticks,
zone 8, shown in blue

Land lines represent unsurveyed and unmarked locations
predetermined by the State of Alaska, Division of Lands
Copper River Meridian

Swamps, as portrayed indicate only the wetter areas,
usually of low relief, as interpreted from aerial photographs

Entire land area is within the Tongass National Forest



CONTOUR INTERVAL 100 FEET
DASHED LINES REPRESENT 50-FOOT CONTOURS
DATUM IS MEAN SEA LEVEL
SHORELINE SHOWN REPRESENTS THE APPROXIMATE LINE OF MEAN HIGH WATER
THE MEAN RANGE OF TIDE IS APPROXIMATELY 12 FEET

- LEGEND**
- Wilderness Boundary
 - National Forest Boundary
 - Alienated Land within
Wilderness Boundary
 - Power Withdrawals within
Wilderness Boundary

The Wilderness includes only
the Public lands, islands, islets,
rocks, and pinnacles above mean
high tide within the exterior
boundary.

PETERSBURG (D-5), ALASKA
N5645-W13320/15X20

The exterior boundary of Petersburg Creek-Duncan
Salt Chuck Wilderness, Tongass National Forest,
Alaska Region, June 1, 1981 as covered into the
National Wilderness Preservation System by the
Act of December 2, 1980.