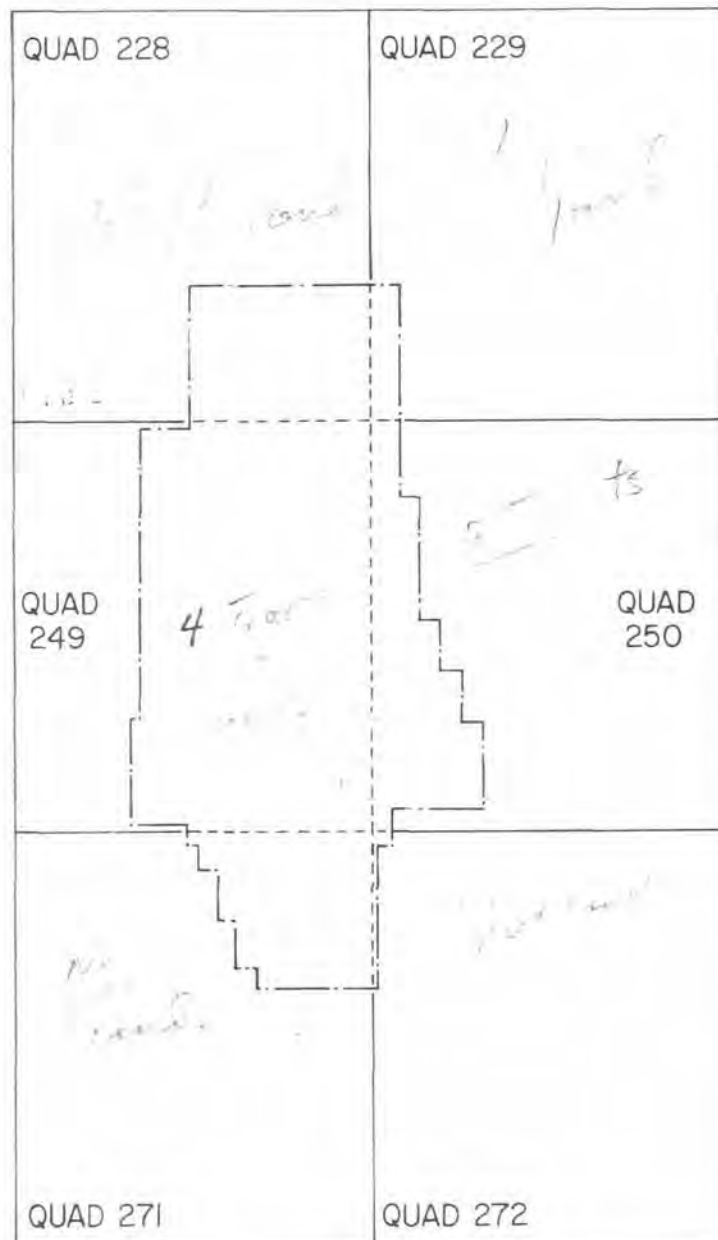


MAZATZAL WILDERNESS

COMPOSITE INDEX MAP

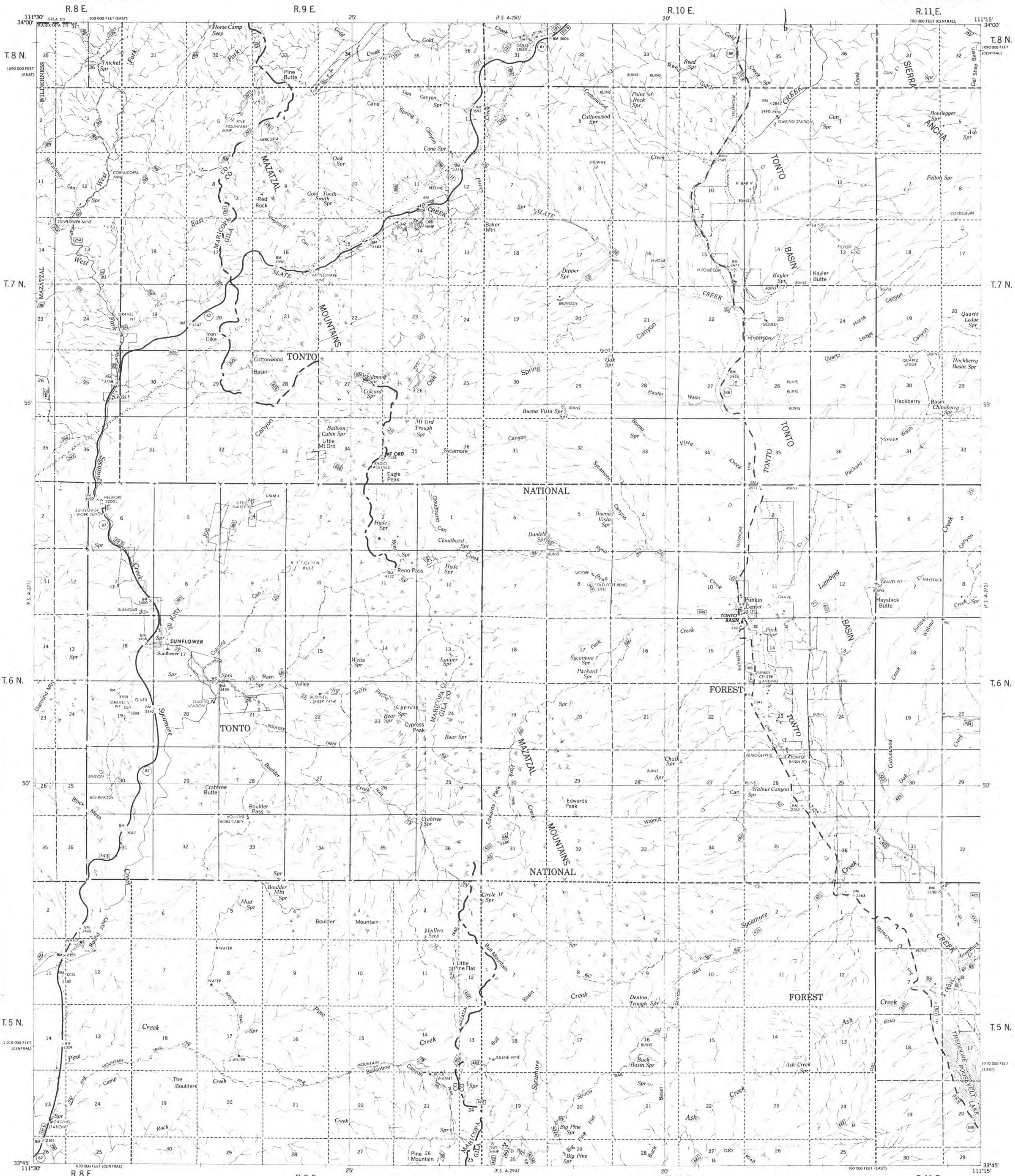


———— WILDERNESS BOUNDARY

———— QUAD OUTLINE

----- QUAD EDGE MATCH LINE IN AREA

SCALE: $\frac{1}{8}$ " = 1 MILE

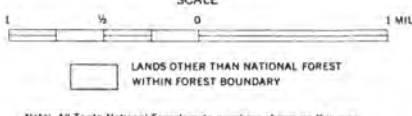


FOREST SERVICE MAP CLASS A
This map reduced from four USGS 1964 standard accuracy maps, 1:24,000 scale.
Conversion by U.S. Forest Service, Regional Office, Albuquerque, New Mexico.
Field edit and accuracy check by USFS 1968
Polyconic projection, 1927 North American datum
10,000-foot grid based on Arizona coordinate system, central zone and east zone.



ROAD CLASSIFICATION

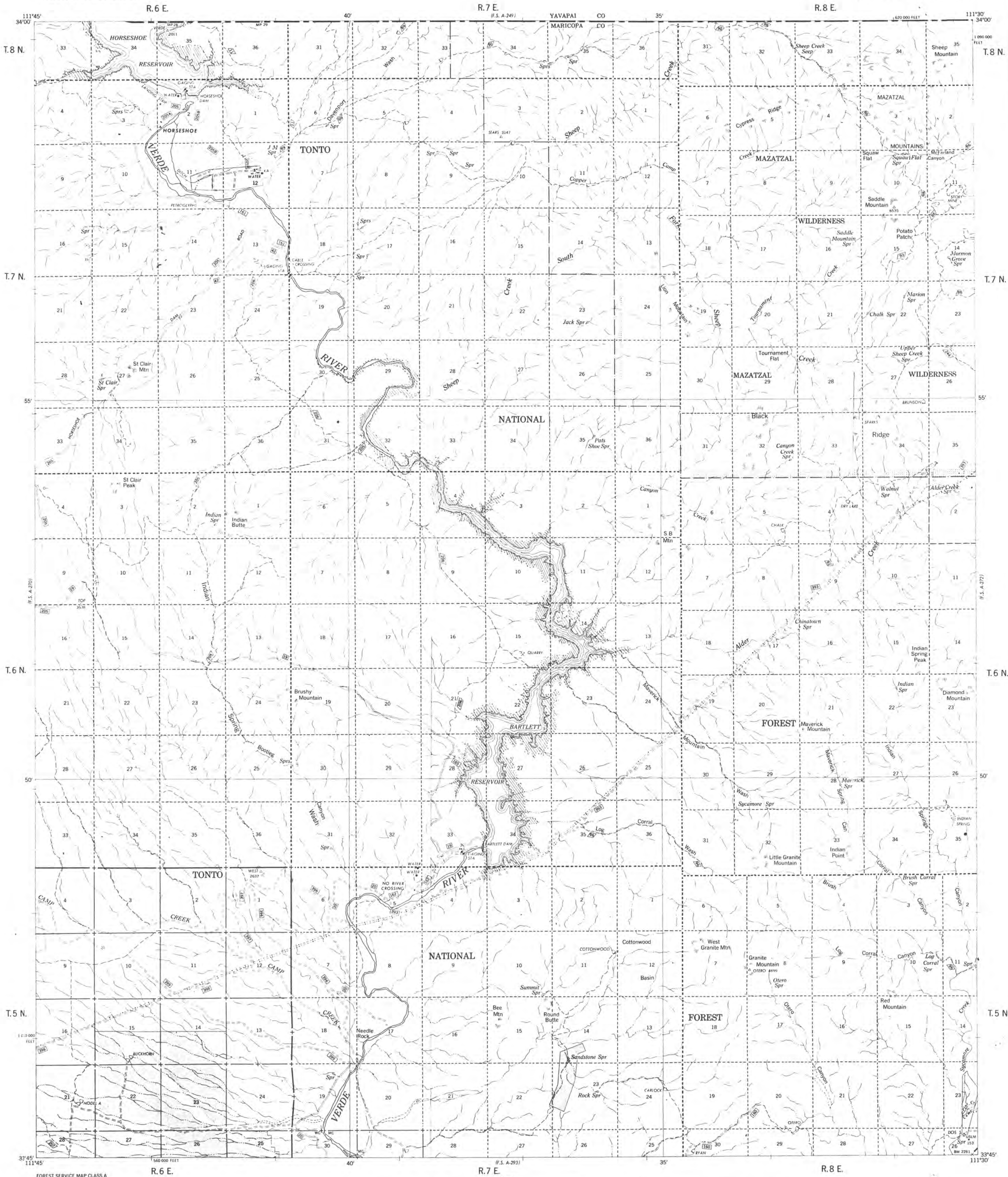
Paved road	—————
All weather road	—————
Dirt road	—————
Primitive road	—————



TOWNSHIP AND SECTION LINE CLASSIFICATION

Surveyed, location reliable	—————
Surveyed, location unreliable	—————
Unsurveyed, projection by B.L.M. 1960	—————

ROOSEVELT 2, ARIZONA
(F.S. NO. A-272)
N3345-W11115 15
1968



FOREST SERVICE MAP CLASS A

This map reduced from four USGS 1964 standard accuracy maps, 1:24,000 scale.
Conversion by U.S. Forest Service, Regional Office, Albuquerque, New Mexico.
Field edit and accuracy check by USFS 1968.

Polynomial projection, 1927 North American datum.
10,000-foot grid based on Arizona coordinate system, central zone.

APPROXIMATE MEAN
DECLINATION, 1968

ROAD CLASSIFICATION
Paved road
All weather road
Dirt road
Proposed road

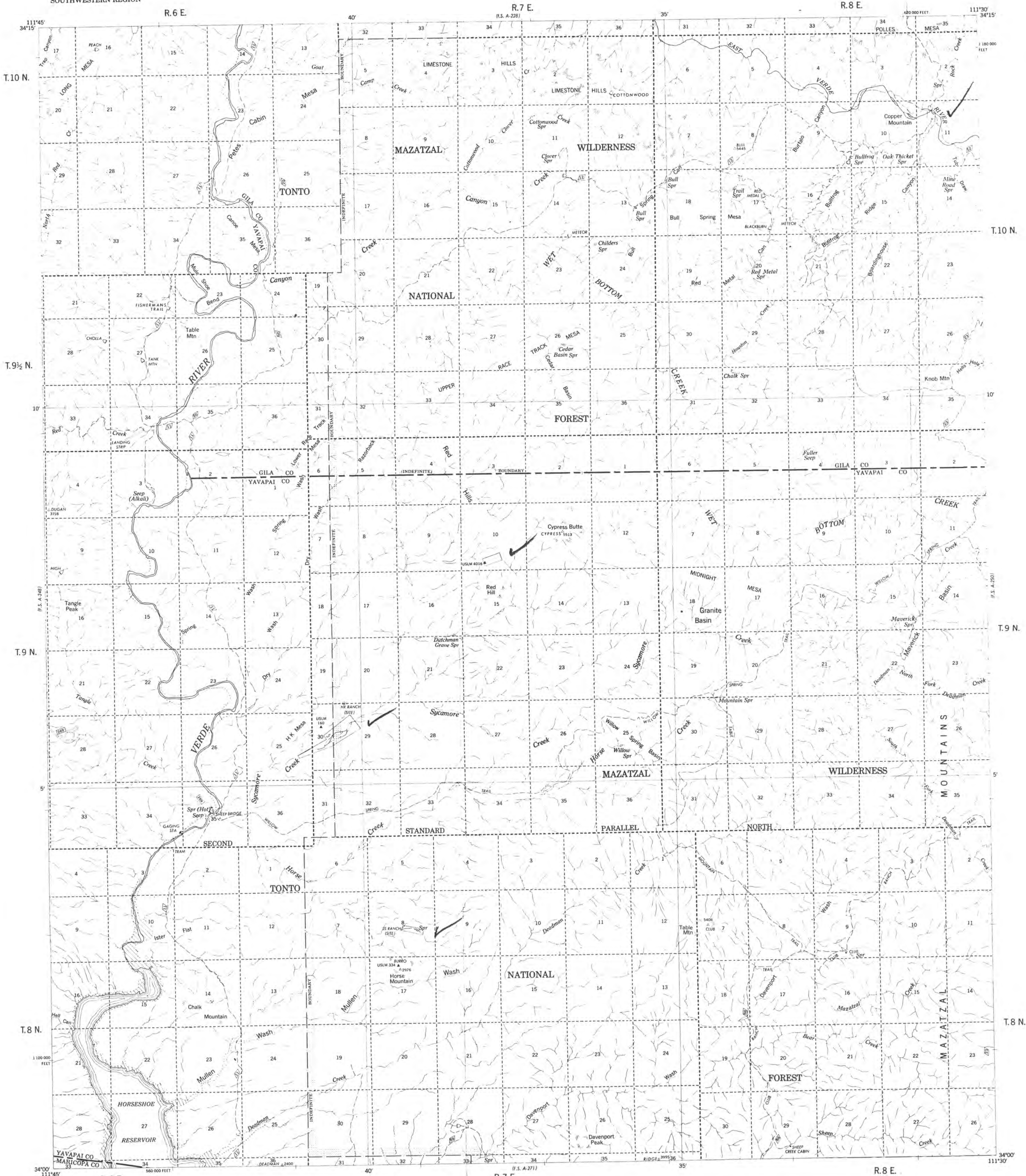
SCALE
1 1/2 1 MILE

LANDS OTHER THAN NATIONAL
FOREST WITHIN FOREST BOUNDARY

Note: All Tonto National Forest route numbers shown on this map
are prefixed by "12" on official records dated June 30, 1968.

TOWNSHIP AND SECTION LINE CLASSIFICATION
Surveyed location reliable
Surveyed location unreliable
Unsurveyed, protection by B.L.M. 1960

CAVE CREEK 1, ARIZONA
(F.S. NO. A-271)
N3345-W1130 15
1968



FOREST SERVICE MAP CLASS A

This map reduced from four USGS 1967 standard accuracy maps, 1:24,000 scale.
Conversion by U.S. Forest Service, Regional Office, Albuquerque, New Mexico.
Field edit and accuracy check by USFS 1968.

Polynomial projection, 1927 North American datum, 10,000 foot grid based on Arizona coordinate system, central zone.

APPROXIMATE MEAN DECLINATION 1968

ROAD CLASSIFICATION
Paved road
All weather road
Dirt road
Primitive road

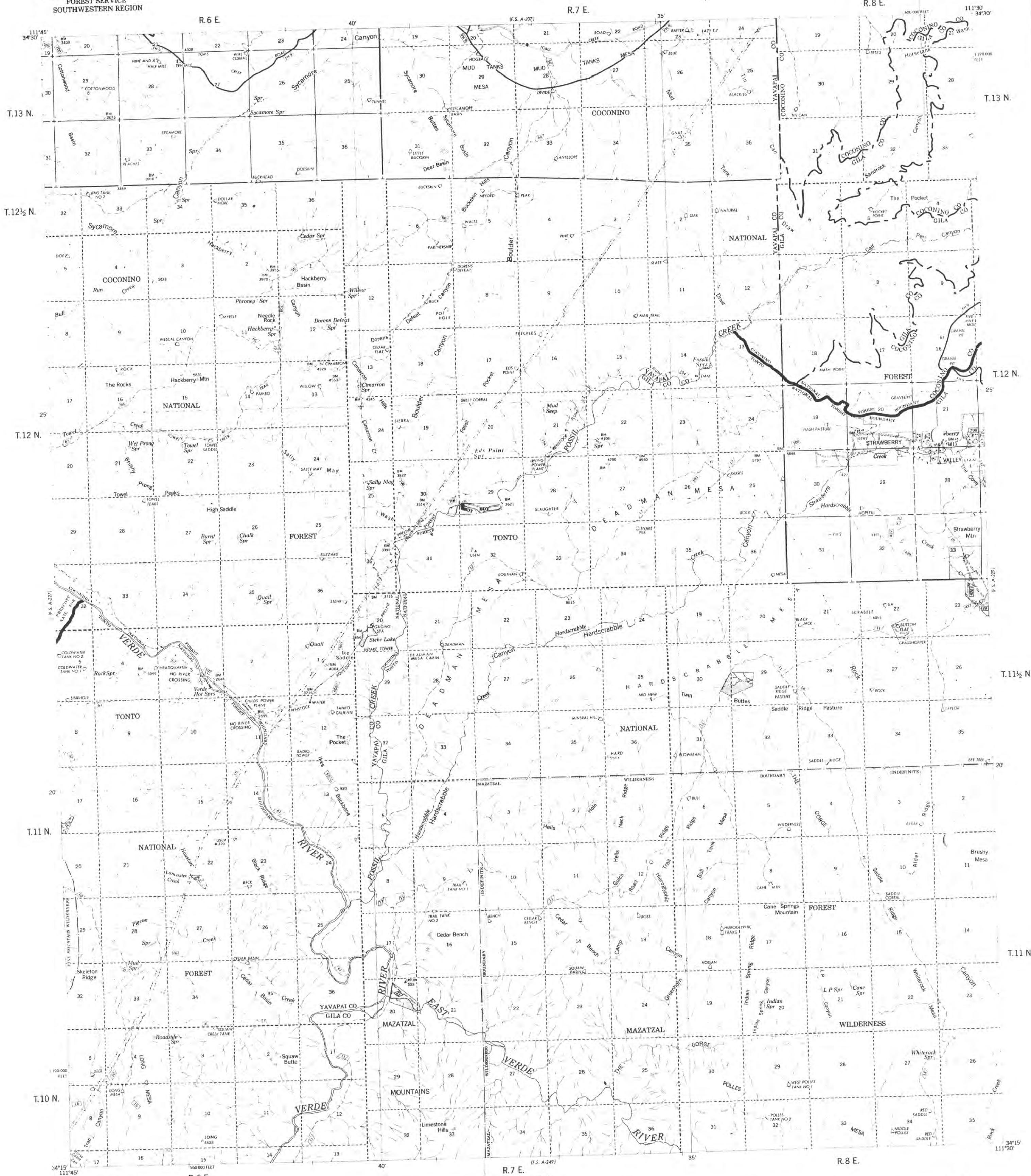
SCALE
1 MILE
0 1/2 1

LANDS OTHER THAN NATIONAL FOREST WITHIN FOREST BOUNDARY

Note: All Tonto National Forest route numbers shown on this map are prefixed by "12" on official records dated June 30, 1968.

TOWNSHIP AND SECTION LINE CLASSIFICATION
Surveyed, location reliable
Surveyed, location unreliable
Unsurveyed, projection by B. L. M. 1960

TURRET PEAK 4, ARIZONA
(F.S. NO. A-249)
N3400-W11130, 16
1968



FOREST SERVICE MAP CLASS A
This map reduced from four USGS 1966 standard accuracy maps, 1:24,000 scale.
Conversion by U.S. Forest Service, Regional Office, Albuquerque, New Mexico.
Field edit and accuracy check by USFS 1968.
Polyconic projection 1927 North American datum
10,000 foot grid based on Arizona coordinate system, central zone.

APPROXIMATE MEAN
DECLINATION, 1960

ROAD CLASSIFICATION
Paved road
All weather road
Dirt road
Primitive road

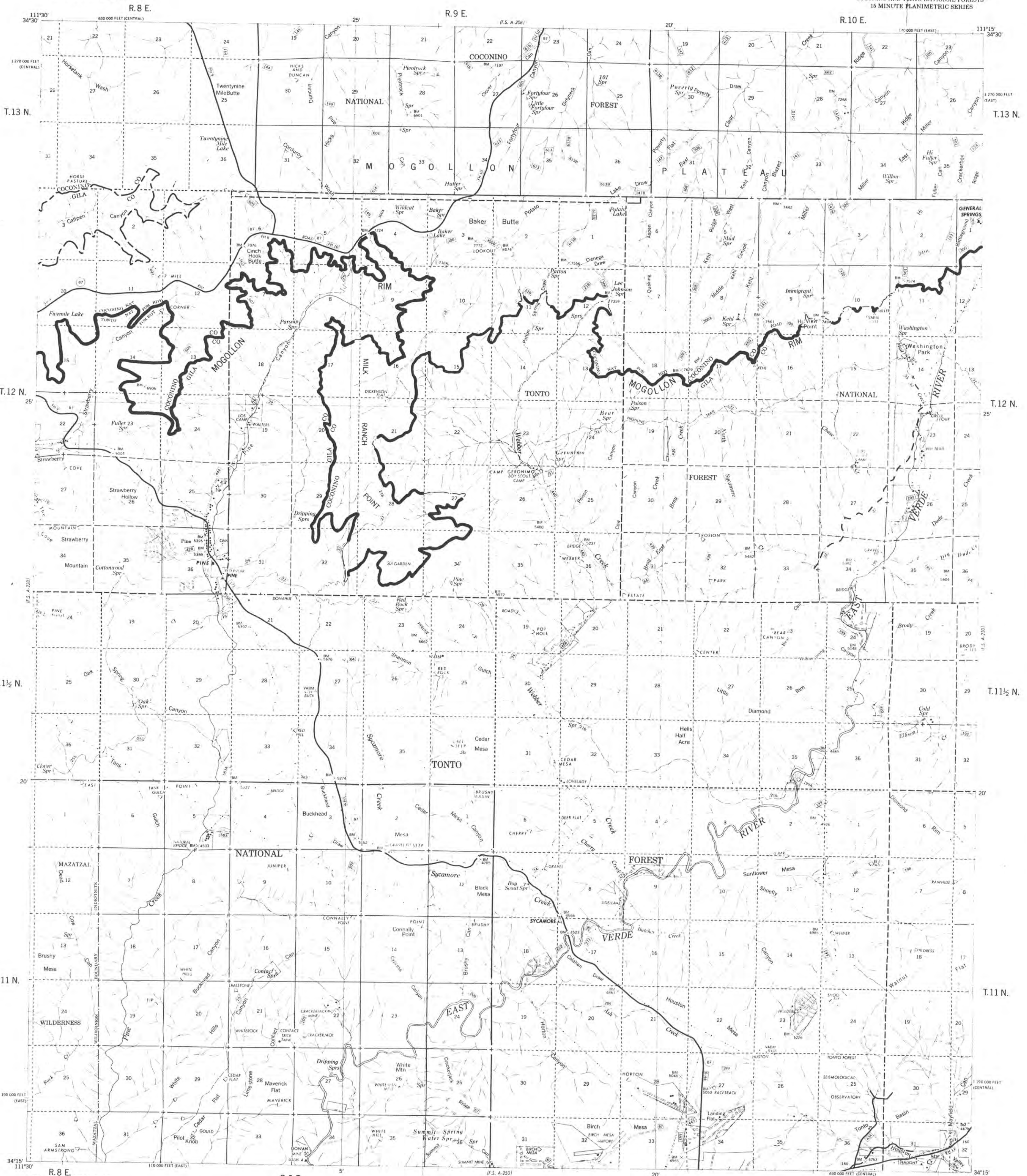
SCALE
1 MILE
LANDS OTHER THAN NATIONAL
FOREST WITHIN FOREST BOUNDARY
Note: All Coconino National Forest route numbers shown on this map are prefixed by "4" and all Tonto National Forest route numbers shown on this map are prefixed by "12" on official records dated June 30, 1968.

TOWNSHIP AND SECTION LINE CLASSIFICATION
Surveyed, location reliable
Surveyed, location unreliable
Unsurveyed, protection by B.L.M. 1960

TURRET PEAK 1, ARIZONA
(F.S. NO. A-228)
N3415-W11130 15
1968

UNITED STATES
DEPARTMENT OF AGRICULTURE
FOREST SERVICE
SOUTHWESTERN REGION

PINE QUADRANGLE
(F.S. NO. A-229)
COCONINO AND TONTO NATIONAL FORESTS
15 MINUTE PLANIMETRIC SERIES



FOREST SERVICE MAP CLASS C (0.05)
This map enlarged from a USGS 1952 standard accuracy
map 1:62,500 scale
Conversion by U.S. Forest Service, Regional Office, Albuquerque, New Mexico
Field edit and accuracy check by USFS 1966
Polyconic projection, 1927 North American datum
15,000-foot grid based on Arizona coordinate system, east zone
and central zone



APPROXIMATE MEAN
DECLINATION, 1968

ROAD CLASSIFICATION
Paved road
All weather road
Dirt road
Primitive road

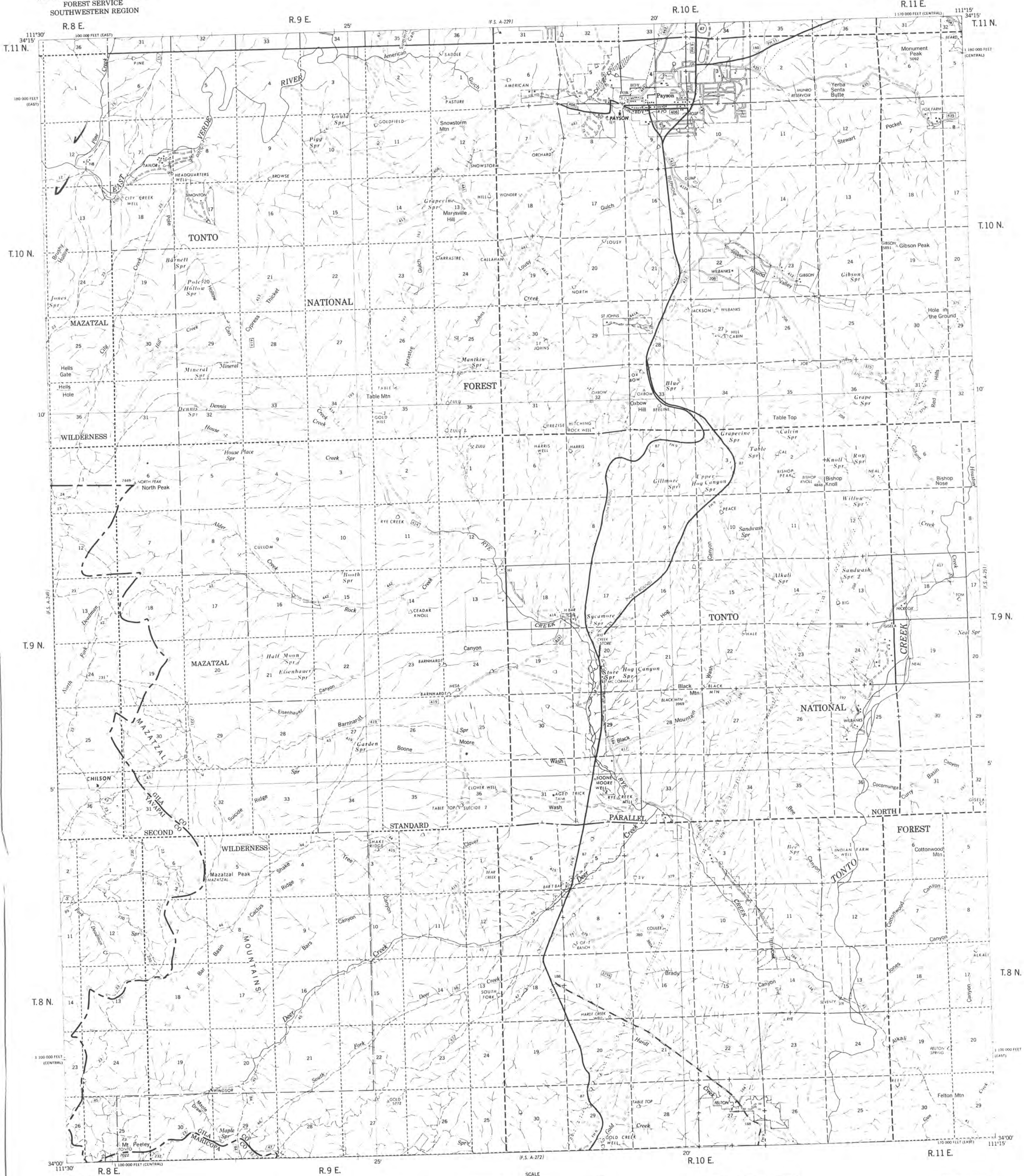
SCALE
0 1 2 MILE

LANDS OTHER THAN NATIONAL FOREST
WITHIN FOREST BOUNDARY

Note: All Coconino National Forest road numbers shown on this map are prefixed by 4, and all Tonto National Forest road numbers shown on this map are prefixed by 12, on official records dated June 30, 1968.

TOWNSHIP AND SECTION LINE CLASSIFICATION
Surveyed, location reliable
Surveyed, location unreliable
Unsurveyed, projection by B.L.M. 1940

PINE, ARIZONA
(F.S. NO. A-229)
N3415-W11115
1966



FOREST SERVICE MAP
Mapped by U.S. Forest Service.
Control by USGS, USCGS, and U.S. Forest Service.
Planimetry by K.E. methods from 1:40,000 scale aerial photographs
taken 1950.
Field edit and accuracy check by USFS 1968.

Polynomial projection, 1927 North American datum.
10,000 foot grid based on Arizona coordinate system, east zone
and central line.
APPROXIMATE MEAN
DECLINATION, 1968

ROAD CLASSIFICATION
Paved road
All weather road
Dirt road
Primitive road

SCALE
1 MILE

LANDS OTHER THAN NATIONAL
FOREST WITHIN FOREST BOUNDARY

Note: All Tonto National Forest route numbers shown on this map
are prefixed by "12" on official records dated June 30, 1968.

TOWNSHIP AND SECTION LINE CLASSIFICATION
Surveyed, location reliable
Surveyed, location unreliable
Unsurveyed, projection by B.L.M. 1960

PAYSON, ARIZONA
(F.S. NO. A-250)
N400-W11115 15
1968