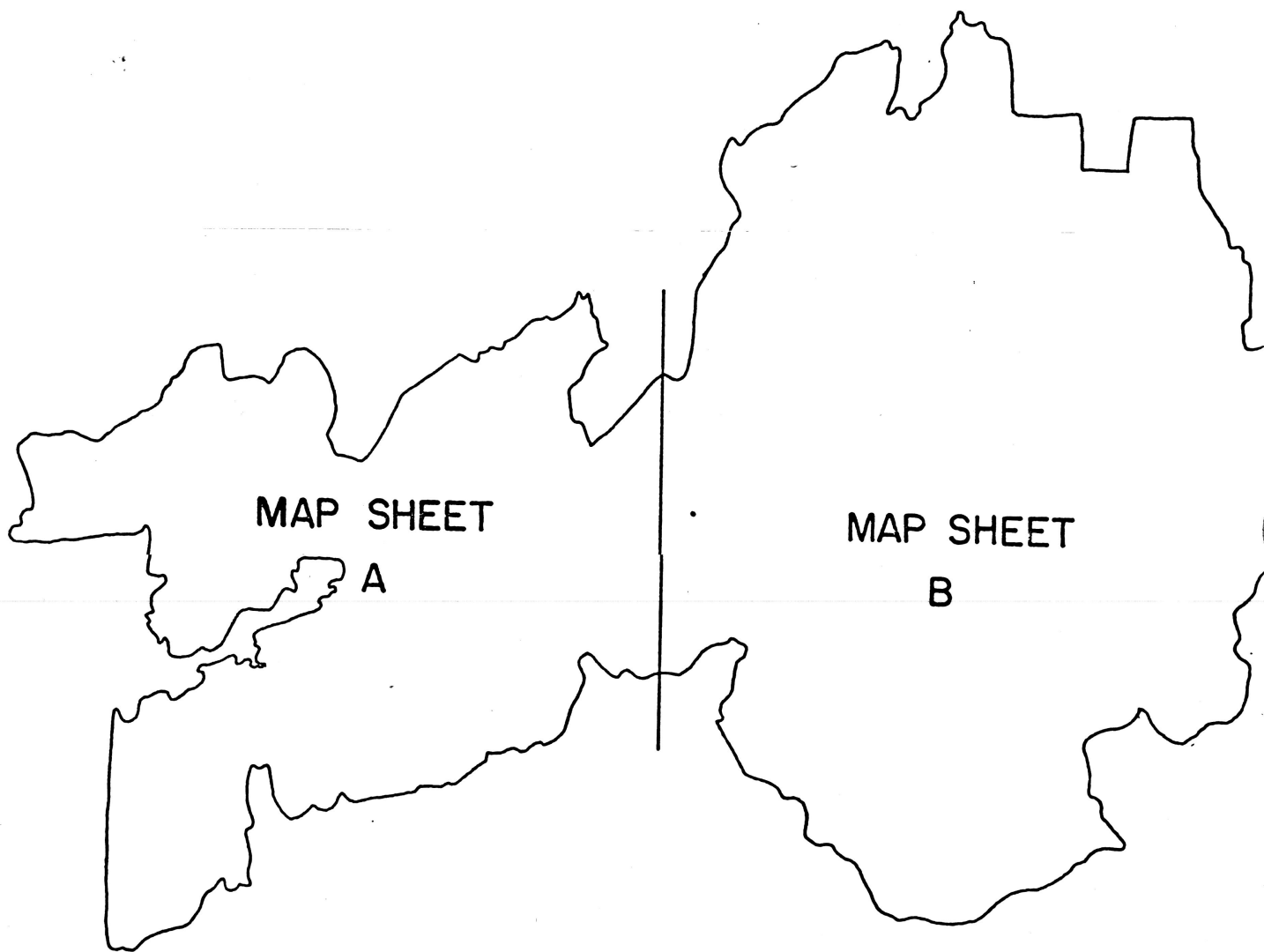
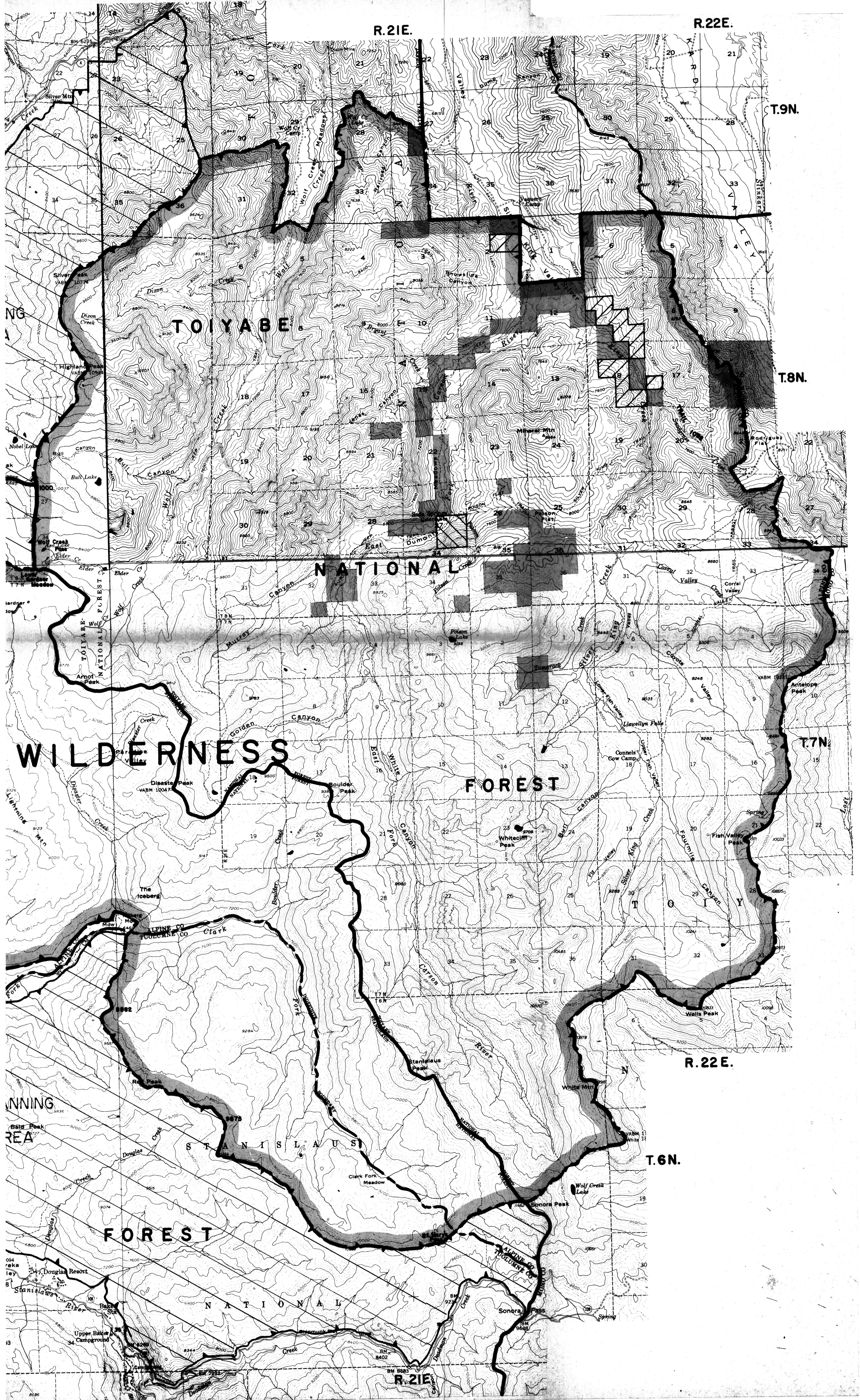


# CARSON ICEBERG WILDERNESS









The exterior boundary of Carson-Iceberg Wilderness, Stanislaus National Forest, Pacific Southwest Region, and Toiyabe National Forest, Intermountain Region, September 1986, as covered into the National Wilderness Preservation System by the Act of 1964 and California Wilderness Act of 1984.

Scale: 1" to 1 mile

LEGEND

- Wilderness Boundary
- Forest Boundary
- National, State or Province Line
- County Line
- Alienated Lands
- Valid Mining Claims
- Withdrawals
- E.O. 10355 Withdrawals

