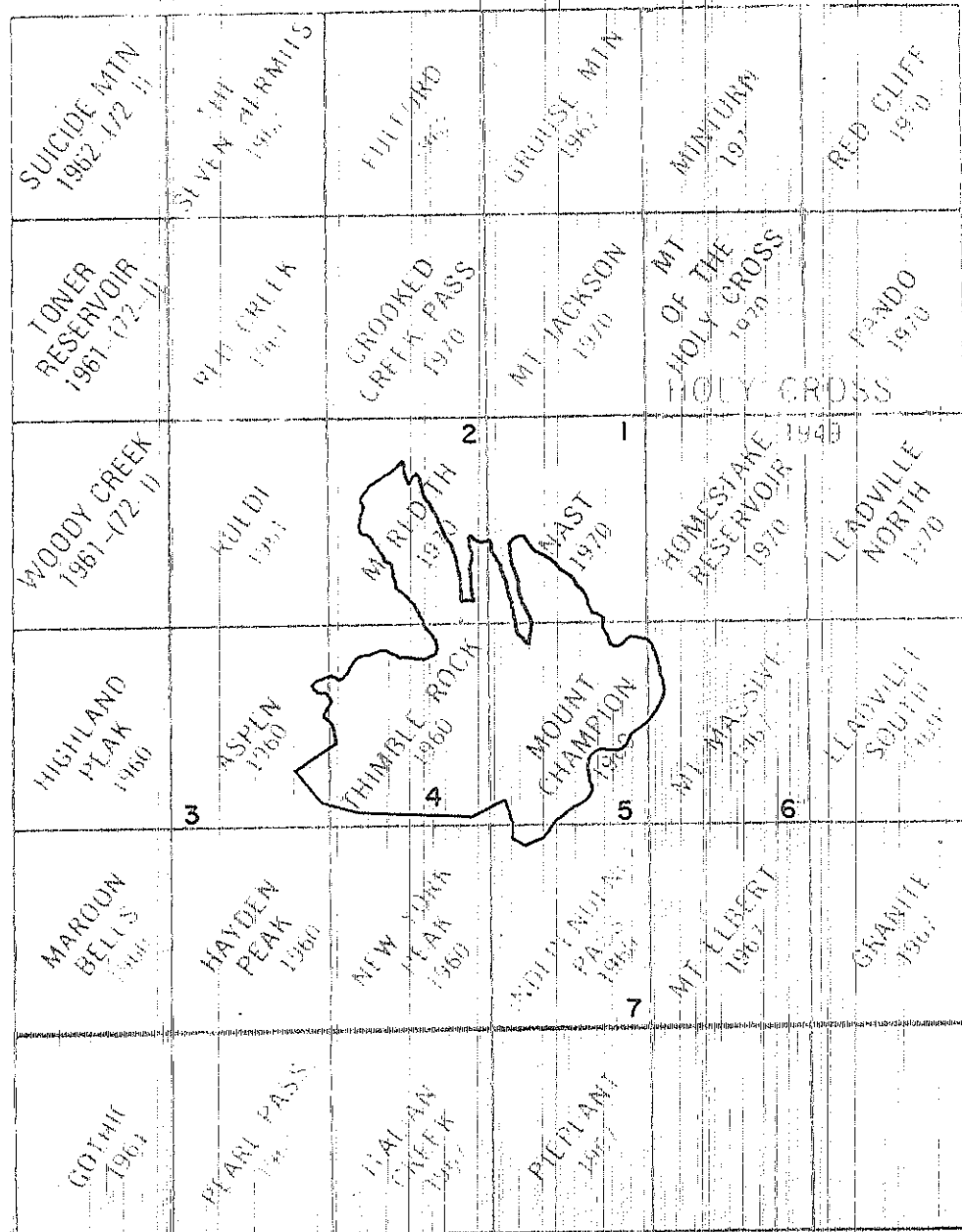


INDEX MAP

HUNTER - FRYINGPAN WILDERNESS

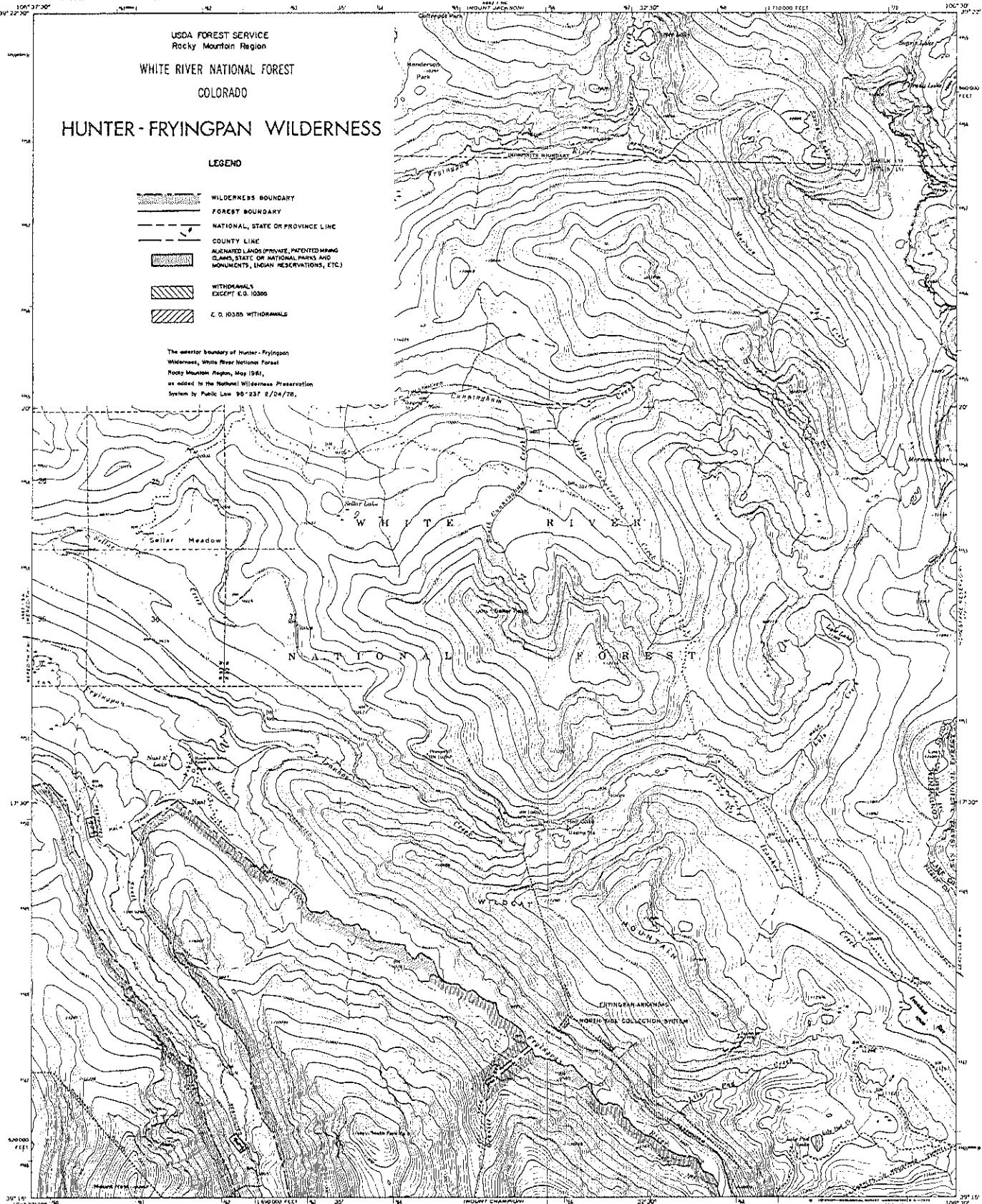


USDA FOREST SERVICE
Rocky Mountain Region
WHITE RIVER NATIONAL FOREST
COLORADO
HUNTER-FRYINGPAN WILDERNESS

LEGEND

- WILDERNESS BOUNDARY
- FOREST BOUNDARY
- NATIONAL, STATE OR PROVINCE LINE
- COUNTY LINE
- ALIENATED LANDS (PRIVATE, PATENTED MINING CLAIMS, STATE OR NATIONAL PARKS AND MONUMENTS, LINGAN RESERVATIONS, ETC.)
- WITHDRAWALS EXCEPT E.O. 10385
- E.O. 10385 WITHDRAWALS

The senior boundary of Hunter-Fryingpan Wilderness, White River National Forest, Rocky Mountain Region, May 1981, as added to the National Wilderness Preservation System by Public Law 96-237 8/24/78.



Mapped, edited, and published by the Geological Survey
Control by USGS, USCGS, and U.S. Bureau of Reclamation
Topography by photogrammetric methods from aerial
photographs taken 1956. Tied to datum 1970
Reference projection 1927 North American datum
10,000-foot grid based on Colorado coordinate system,
vertical rise
1000-meter Universal Transverse Mercator grid ticks,
zone 13, shown in blue
Certain red lines are omitted because
of insufficient data

LINE USED ONLY FOR DETERMINING MAP
DECLINATION OF LAYER OF SHEET

SCALE 1:24,000
CONTOUR INTERVAL 40 FEET
DATUM IS MEAN SEA LEVEL
THIS MAP COMPLETS NATIONAL MAP ACCURACY STANDARDS
FOR SALE BY U.S. GEOLOGICAL SURVEY, DENVER, COLORADO 80225, OR WASHINGTON, D.C. 20242
A FOLDER DESCRIBING TOPOGRAPHIC MAPS AND SYMBOLS IS AVAILABLE ON REQUEST

ROAD CLASSIFICATION
Primary Highway, Light-duty road, hard or
Hard surface, Improved surface
Secondary Highway, Unimproved road
Hard surface, U.S. Route
Interstate Route, State Route

NAST, COLO.
43019-W10608/7.5
1970

AMS 4019-1 REC-REPAIR YAT

USDA FOREST SERVICE
Rocky Mountain Region

WHITE RIVER NATIONAL FOREST

COLORADO

HUNTER-FRYINGPAN WILDERNESS

LEGEND

- WILDERNESS BOUNDARY
- FOREST BOUNDARY
- NATIONAL, STATE OR PROVINCE LINE
- COUNTY LINE
- ALLOCATED LANDS (PRIVATE, INTERESTED MINING CLAIMS, STATE OF NATIONAL MONUMENTS AND MONUMENTS, INDIAN RESERVATIONS, ETC.)
- WITHDRAWALS EXCEPT E.O. 10385
- E.O. 10385 WITHDRAWALS

The interior boundary of Hunter-Fryingpan Wilderness, White River National Forest, Rocky Mountain Region, May 1981, is added to the National Wilderness Preservation System by Public Law 96-237 2/24/79.

Maped, edited, and published by the Geological Survey
Control by USGS, USGAS, and U. S. Bureau of Reclamation
Topography by photogrammetric methods from aerial photographs taken 1958. Field checked 1970
Projection projection - 1927 North American datum
10,000-foot grid based on Colorado coordinate system, central zone
100,000-meter Universal Transverse Mercator grid lines, zone 13, shown in blue
Fine red dashed lines indicate selected fence lines
Certain land lines are omitted because of insufficient data

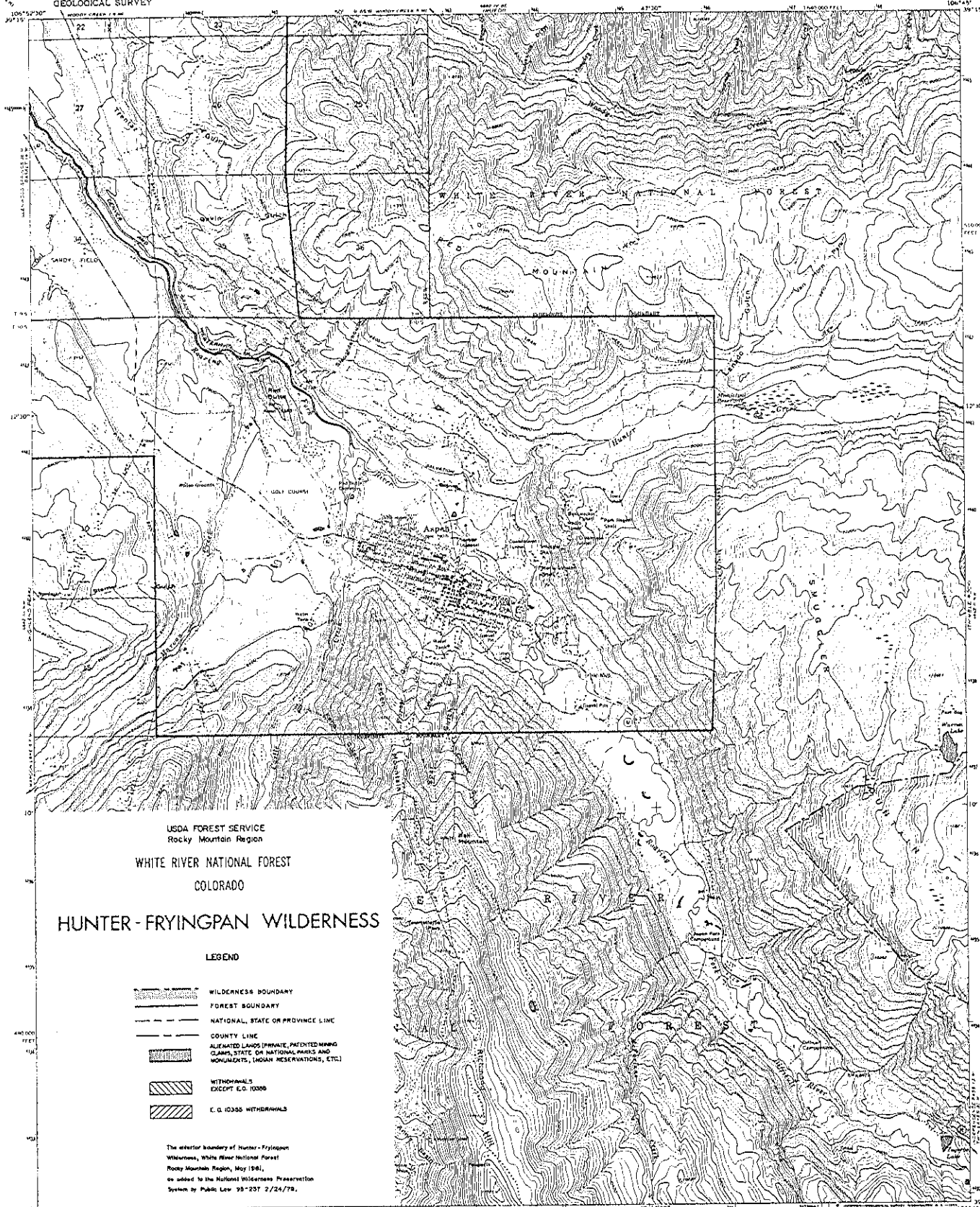
SCALE 1:24,000
CONTOUR INTERVAL 40 FEET
DATUM IS MEAN SEA LEVEL

ROAD CLASSIFICATION
Primary highway, hard surface
Secondary highway, hard surface
Unimproved road
Interstate Route
U. S. Route
State Route
Light-duty road, hard or improved surface
Unimproved road



MEREDITH, COLO.
1970

AMR 4462 1 87-000000 7977



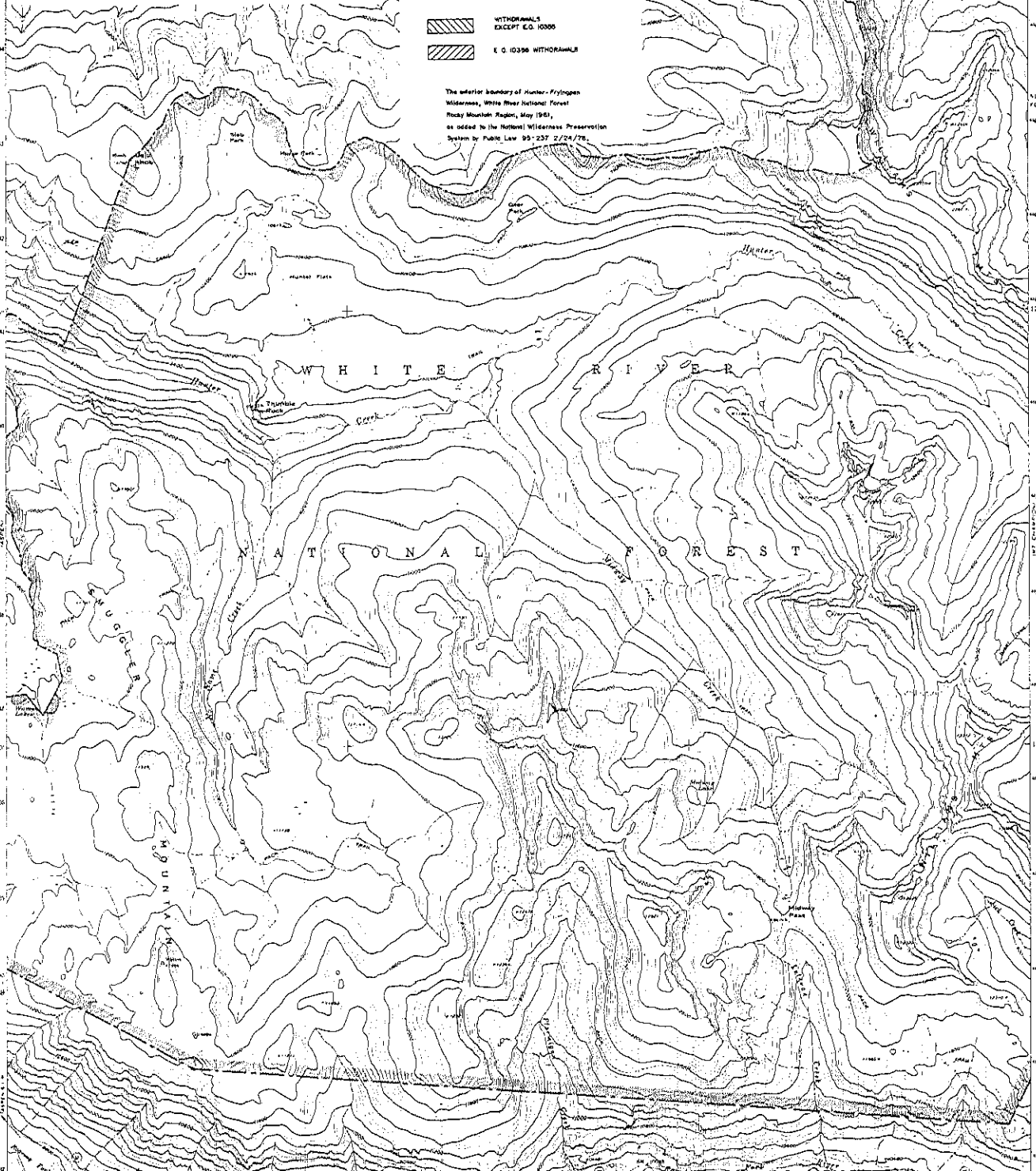
USDA FOREST SERVICE
Rocky Mountain Region
WHITE RIVER NATIONAL FOREST
COLORADO

HUNTER-FRYINGPAN WILDERNESS

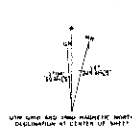
LEGEND

- WILDERNESS BOUNDARY
- FOREST BOUNDARY
- NATIONAL, STATE OR PROVINCE LINE
- COUNTY LINE
- ALIENATED LANDS (PRIVATE, REVERTED, MOUNTAIN CLANS, STATE OR NATIONAL PARKS AND MONUMENTS, INDIAN RESERVATIONS, ETC.)
- WITHDRAWALS EXCEPT E.O. 10000
- E.O. 10296 WITHDRAWALS

The exterior boundary of Hunter-Fryingpan Wilderness, White River National Forest, Rocky Mountain Region, May (1981), as added to the National Wilderness Preservation System by Public Law 95-237 2/24/78.



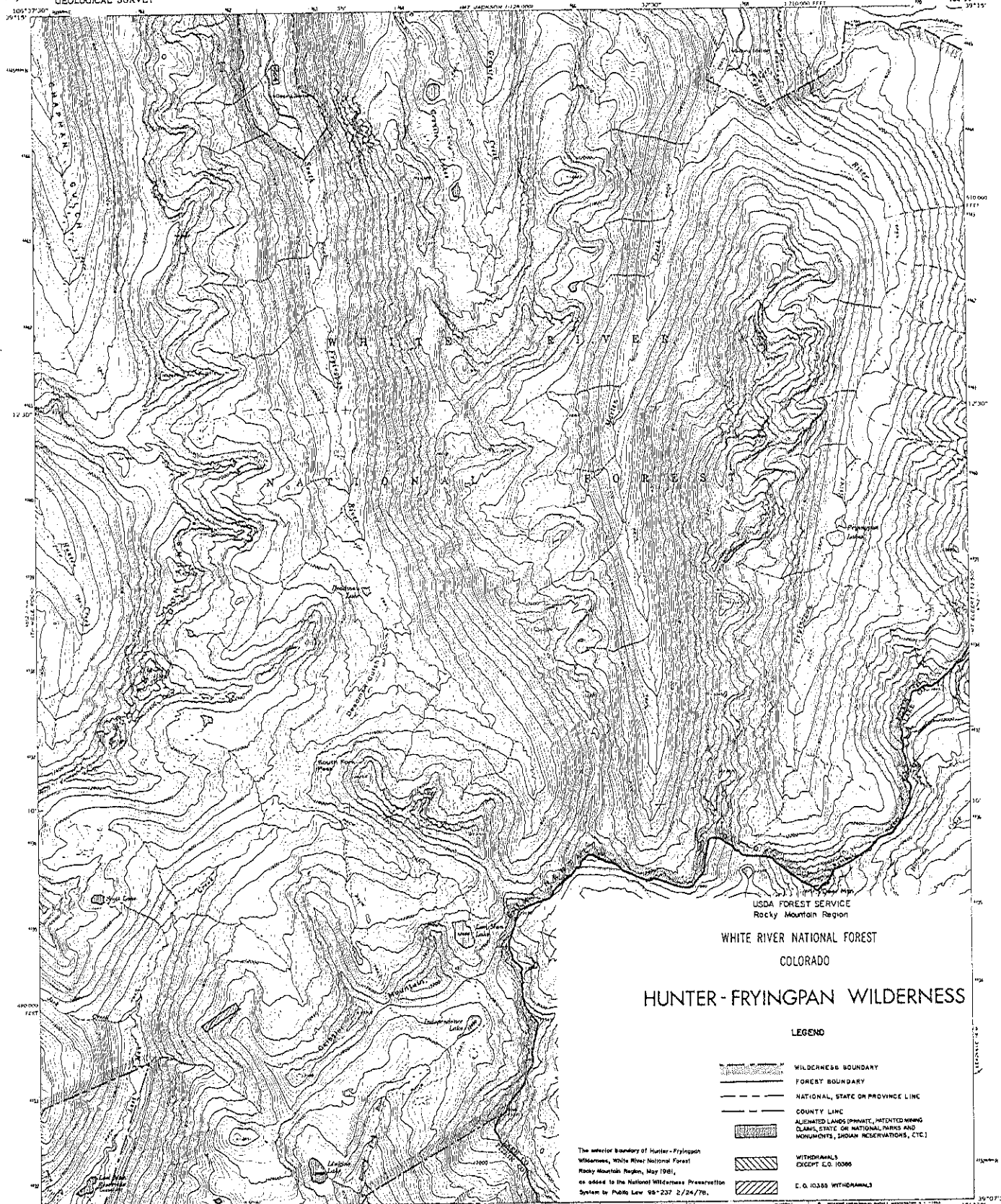
Maped, edited, and published by the Geological Survey
Control by USGS and USGS
Topography by photogrammetric methods from aerial
photographs taken 1958. Flats checked 1959 and 1960
Horizontal projection: 1927 North American datum
10,000-foot grid based on Colorado coordinate system, central zone
1000-meter Universal Transverse Mercator grid ticks,
contour lines shown in blue
Where omitted, land lines have not been established
or are not shown because of insufficient data



SCALE 1:24,000
CONTOUR INTERVAL 40 FEET
DATUM IS MEAN SEA LEVEL

ROAD CLASSIFICATION
Lightblue
State Route
THIMBLE ROCK, COLO.
A3907.5-110637.5/2.5
1960
AND 4662 U.S. N.W. SERIES 1977

THIS MAP COMPLETES WITH NATIONAL MAP ACCURACY STANDARDS
FOR SALE BY U. S. GEOLOGICAL SURVEY, DENVER 25, COLORADO OR WASHINGTON 25, D. C.
A FOLDER DESCRIBING TOPOGRAPHIC MAPS AND SYMBOLS IS AVAILABLE ON REQUEST



USDA FOREST SERVICE
Rocky Mountain Region

WHITE RIVER NATIONAL FOREST
COLORADO

HUNTER-FRYINGPAN WILDERNESS

LEGEND

- WILDERNESS BOUNDARY
- FOREST BOUNDARY
- NATIONAL, STATE OR PROVINCE LINE
- COUNTY LINE
- ALIENATED LANDS (PRIVATE, PATENTED MINING CLAIMS, STATE OR NATIONAL PARKS AND MONUMENTS, INDIAN RESERVATIONS, ETC.)
- WILDERNESS EXCEPT E.O. 10388
- E.O. 10388 WILDERNESS

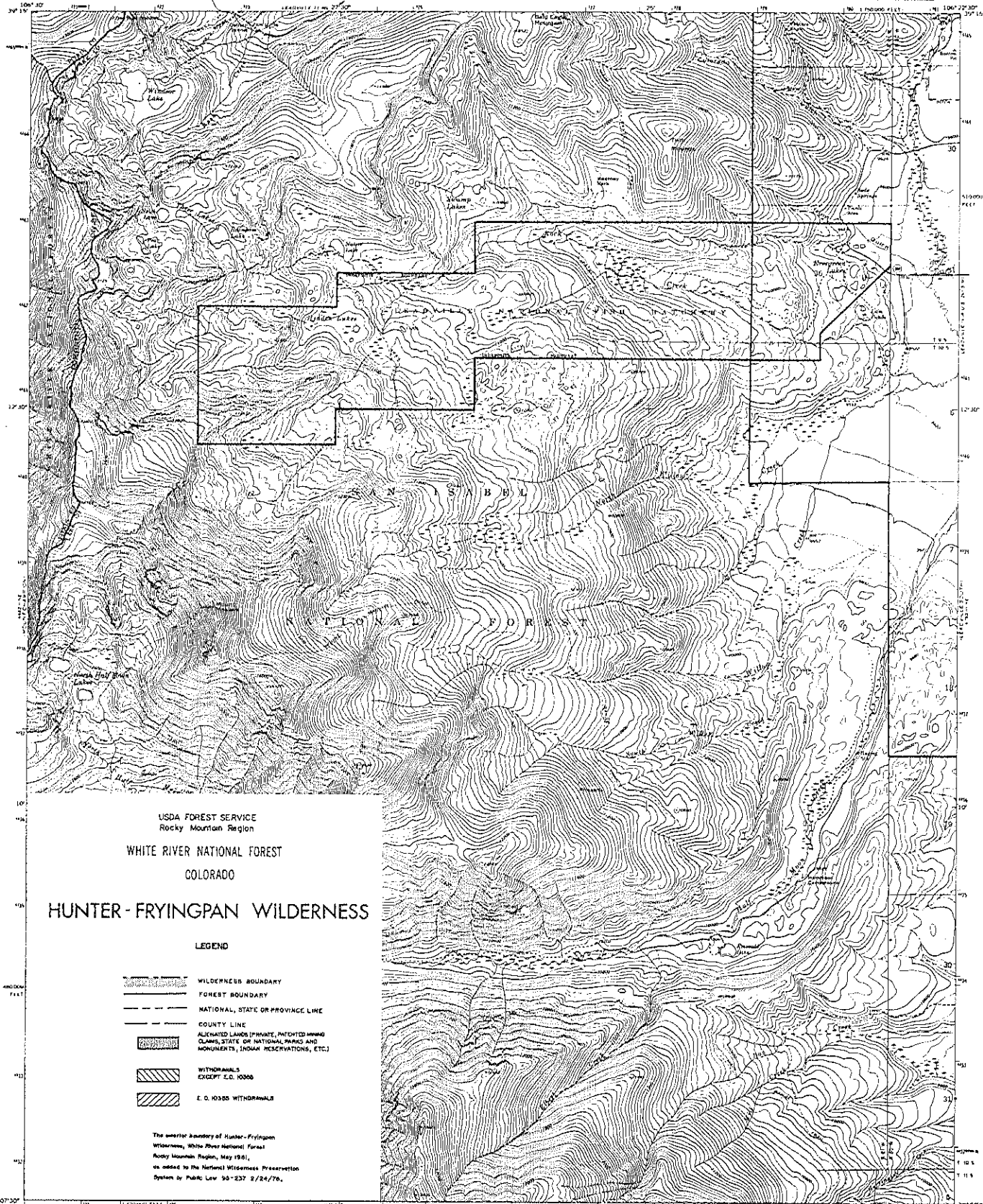
The anterior boundary of Hunter-Fryingpan Wilderness, White River National Forest Rocky Mountain Region, Map 1941, as added to the National Wilderness Preservation System by Public Law 96-232 2/24/78.

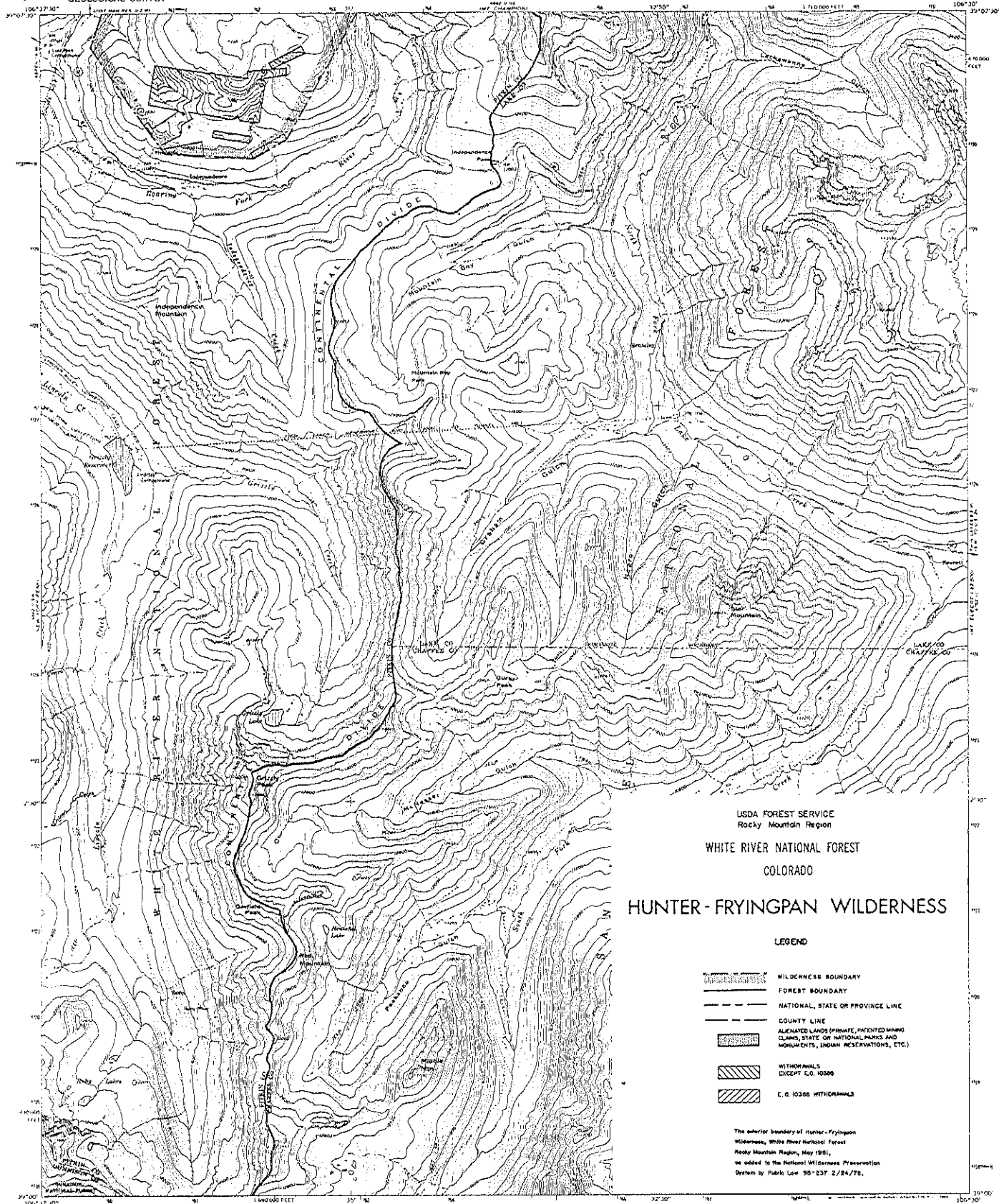
ROAD CLASSIFICATION
Unimproved dirt



MT. CHAMPION, COLO.
H3907 5-W10530/1 5
1960

AMS 4462 (1) NK-SERIES 7477





Mapped, edited, and published by the Geological Survey
Control by U.S. and U.S. GEOLOGICAL SURVEY
Topography by photogrammetric methods from aerial
photographs taken 1958. Field checked 1960
Projection: 1927 North American datum
10,000 foot grid based on Colorado coordinate system, central zone
1000-meter Universal Transverse Mercator grid lines
Zone 12, shown in blue
Certain road lines are omitted because of insufficient data



THIS MAP COMPLETES WITH NATIONAL MAP ACCURACY STANDARDS
FOR SALE BY U. S. GEOLOGICAL SURVEY, DENVER 25, COLORADO OR WASHINGTON 25, D. C.
A FOLDER DESCRIBING TOPOGRAPHIC MAPS AND SYMBOLS IS AVAILABLE ON REQUEST



INDEPENDENCE PASS, COLO.
N 3700—W 10507.75
1960
AMS 4002 H SE—SERIES 7477