


NATIONAL WILDERNESS PRESERVATION SYSTEM
INDIAN PEAKS WILDERNESS
ARAPAHO AND ROOSEVELT NATIONAL FORESTS

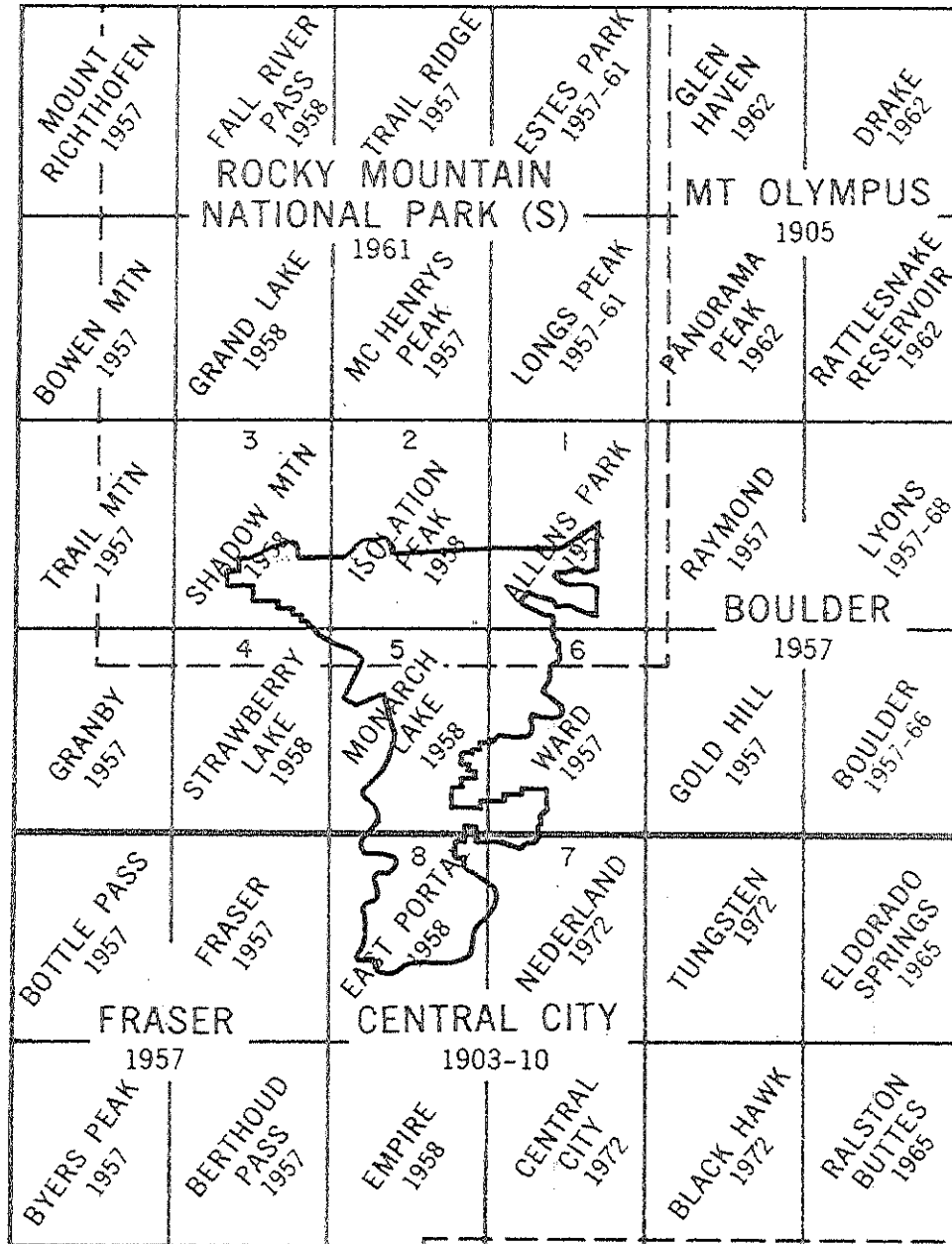
I hereby certify that the description and map herewith, represent the location of the boundary of the Indian Peaks Wilderness on the Arapaho and Roosevelt National Forests as it existed as of the date of Public Law 95-450 and as amended by the Colorado Wilderness Act (Public Law 96-560).

Signed March 29, 1982


Regional Forester

INDEX MAP

INDIAN PEAKS WILDERNESS



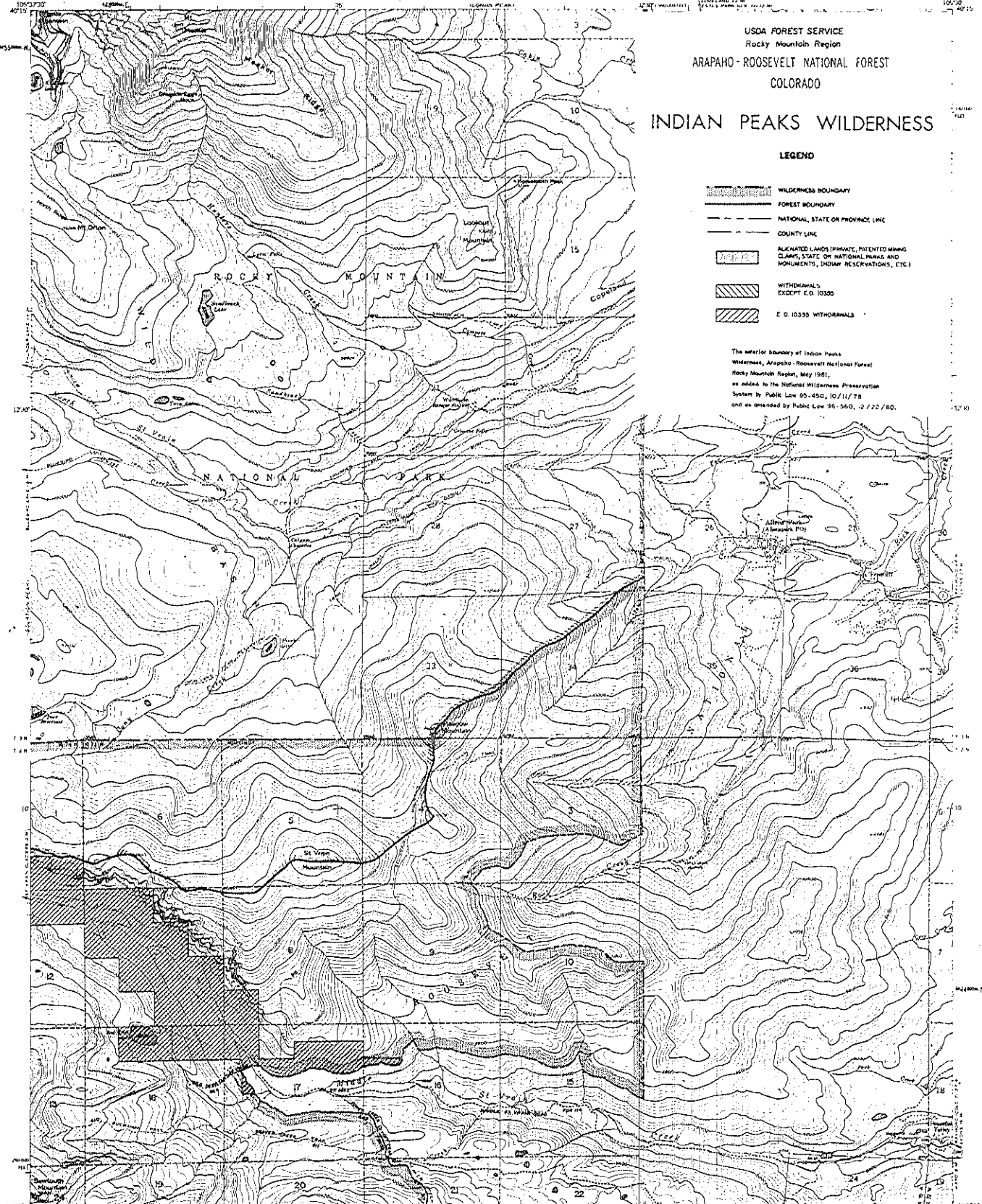
USDA FOREST SERVICE
Rocky Mountain Region
ARAPAHO-ROOSEVELT NATIONAL FOREST
COLORADO

INDIAN PEAKS WILDERNESS

LEGEND

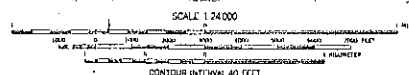
- WILDERNESS BOUNDARY
- FOREST BOUNDARY
- NATIONAL, STATE OR PROVINCE LINE
- COUNTY LINE
- ALIENATED LANDS (PRIVATE, PATENTED MINING CLAIMS, STATE OR NATIONAL PARKS AND MONUMENTS, INDIAN RESERVATIONS, ETC.)
- WITHDRAWALS EXCEPT E.O. 10335
- E.O. 10335 WITHDRAWALS

The interior boundary of Indian Peaks Wilderness, Arapaho-Roosevelt National Forest, Rocky Mountain Region, May 1981, as added to the National Wilderness Preservation System by Public Law 96-450, 10/11/78 and as amended by Public Law 96-560, 12/22/78.



Map, edited, and published by the Geological Survey as part of the Department of the Interior program for the development of the Missouri River Basin. Control by USGS and USGCS.

Topography from aerial photographs by photogrammetric methods. Aerial photographs taken 1953. Field check 1957. Horizontal projection. 1927 North American datum. 10,000 foot grid based on Colorado coordinate system, north zone. 100,000 foot Universal Transverse Mercator grid, zone 13, shown in blue. Dashed lines show approximate locations. Land lines are omitted in T. 2 and 3. N. 1, 74 W. and in parts of T. 2 and 3. N. 73 W. because of insufficient data.



ROAD CLASSIFICATION
Medium duty Light-duty
Unimproved dirt
Cable Road

FOR SALE BY U.S. GEOLOGICAL SURVEY, DENVER, COLORADO OR WASHINGTON, D.C.
A FOLDER CONTAINING INFORMATION ABOUT THIS MAP IS AVAILABLE ON REQUEST

ALLENS PARK, COLO.
NAD83 5-W (1053) 7.5
1997

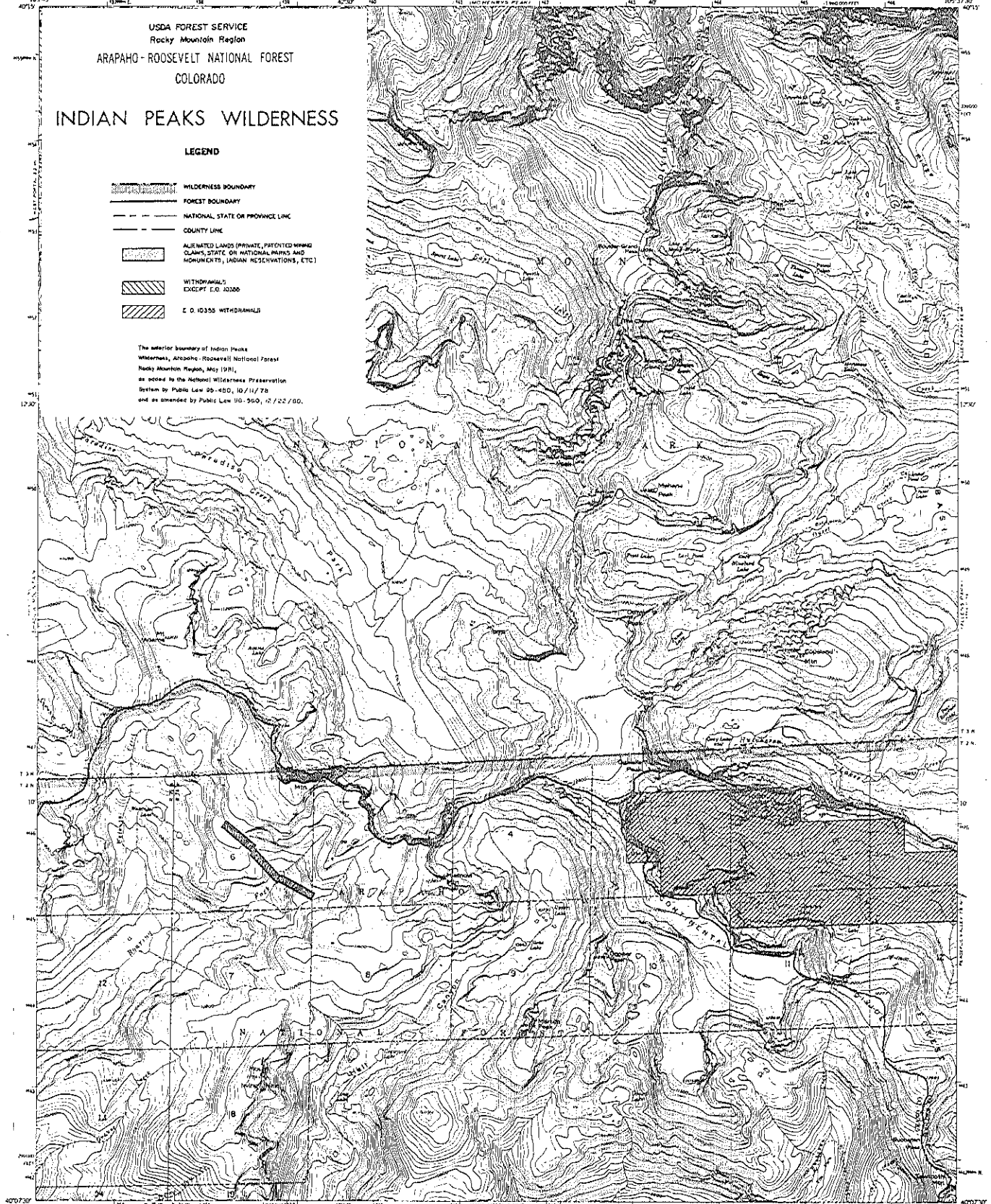
USDA FOREST SERVICE
Rocky Mountain Region
ARAPAHO-ROOSEVELT NATIONAL FOREST
COLORADO

INDIAN PEAKS WILDERNESS

LEGEND

- WILDERNESS BOUNDARY
- FOREST BOUNDARY
- NATIONAL STATE OR PROVINCE LINE
- COUNTY LINE
- ALIENATED LANDS (PRIVATE, PATENTED MINING CLAIMS, STATE OR NATIONAL PARKS AND MONUMENTS, INDIAN RESERVATIONS, ETC.)
- WITHDRAWALS EXCEPT E.O. 10336
- E.O. 10336 WITHDRAWALS

The interior boundary of Indian Peaks Wilderness, Arapaho-Roosevelt National Forest, Rocky Mountain Region, May 1981, as added to the National Wilderness Preservation System by Public Law 96-480, 10/11/78 and as amended by Public Law 96-550, 12/22/80.

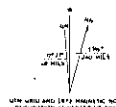


Map prepared, edited, and published by the Geological Survey as part of the Department of the Interior program for the development of the Missouri River Basin. Compiled by USGS and USFWS.

Topographic data from aerial photographs by photogrammetric methods. Aerial photographs taken 1956. Field check 1956.

Projection: 1927 North American datum. 10,000-foot grid based on Colorado coordinate system, north zone. 1000-meter Universal Transverse Mercator and UTM, zone 12, datum at base.

Land lines limited except in T. 2 N., R. 75 W. because of insufficient data.



SCALE 1:24,000

CONTOUR INTERVAL 40 FEET

DEVELOP TO MATCH MAP SIZES



ISOLATION PEAK, COLO.
NAD83 5-W-10537 5/2.5

1956
AMN 4884 11 NW - SERIES 7977

UNITED STATES
DEPARTMENT OF THE INTERIOR
GEOLOGICAL SURVEY

SHADOW MOUNTAIN QUADRANGLE
COLORADO-GRAND CO.
7.5 MINUTE (TOPOGRAPHIC)

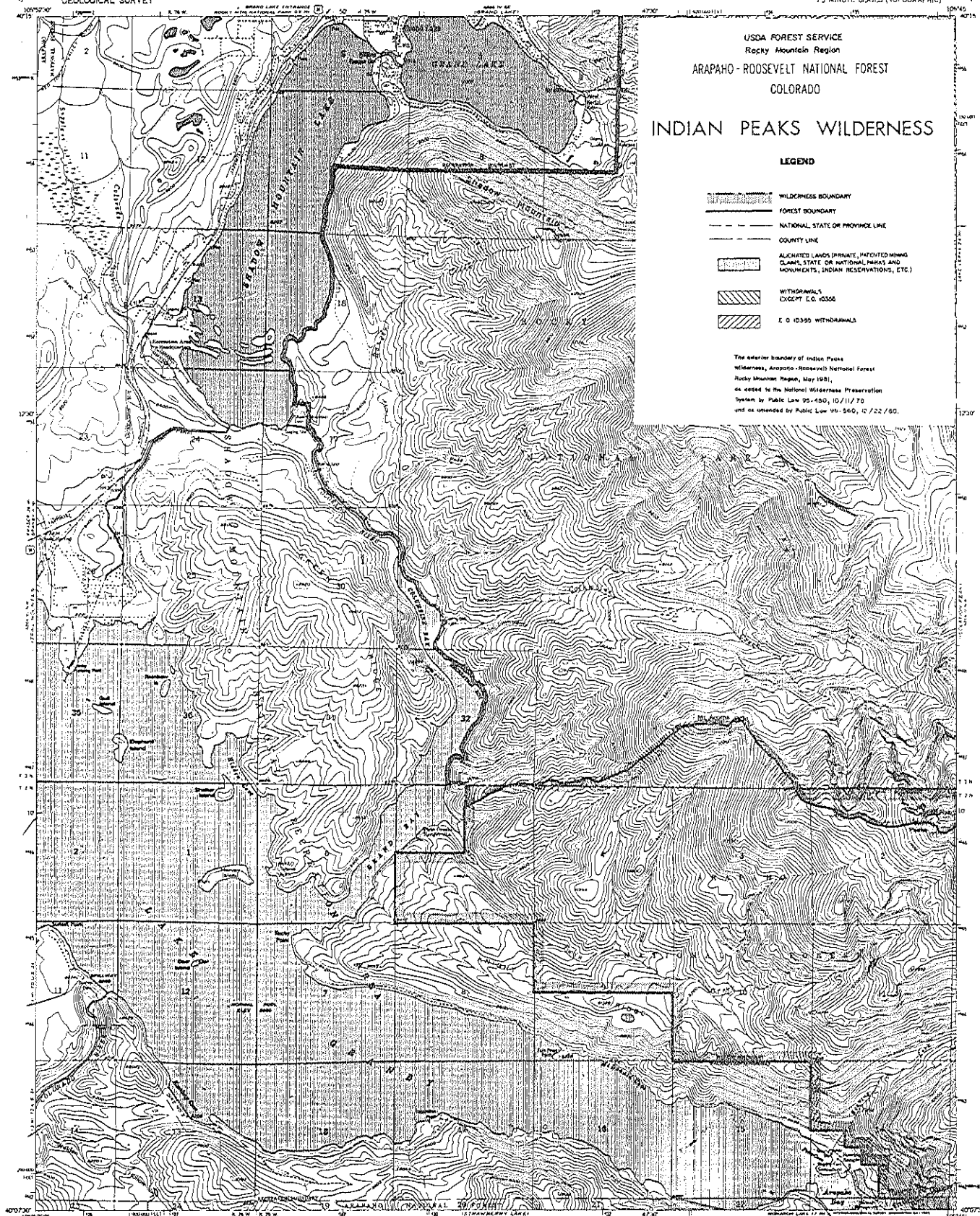
USDA FOREST SERVICE
Rocky Mountain Region
ARAPAHO-ROOSEVELT NATIONAL FOREST
COLORADO

INDIAN PEAKS WILDERNESS

LEGEND

- WILDERNESS BOUNDARY
- FOREST BOUNDARY
- NATIONAL, STATE OR PROVINCE LINE
- COUNTY LINE
- ALLOCATED LANDS (PRIVATE, PATENTED MINING CLAIMS, STATE OR NATIONAL PARKS AND MONUMENTS, INDIAN RESERVATIONS, ETC.)
- WITHDRAWALS EXCEPT E.O. 10350
- E.O. 10350 WITHDRAWALS

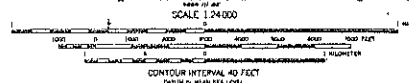
The exterior boundary of Indian Peaks
Wilderness, Arapaho-Roosevelt National Forest
Rocky Mountain Region, May 1981,
as added to the National Wilderness Preservation
System by Public Law 95-450, 10/11/79
and as amended by Public Law 101-560, 12/22/80.



Map made, edited, and published by the Geological Survey
Control by USGS and USFWS

Topography from aerial photographs by photogrammetric methods
Aerial photographs taken 1953. Field check 1956.
Polyconic projection. 1927 North American datum.
50,000 feet contour interval on Colorado coordinate system,
North zone.
1000-meter Universal Transverse Mercator grid lines,
zone 13, shown in blue.
Land areas outlined in part of T. 3 N. R. 75 W.
because of insufficient data.
Unchecked elevations are shown in brown.

UTM COORDINATE SYSTEM
DECLINATION AT CENTER OF SHEET



CONTOUR INTERVAL 40 FEET
ELEVATION IN FEET

ROAD CLASSIFICATION
Major duty Light duty
Unimproved dirt
U.S. Route



SHADOW MOUNTAIN, COLO.
H4007 5-110645/7 5
1958

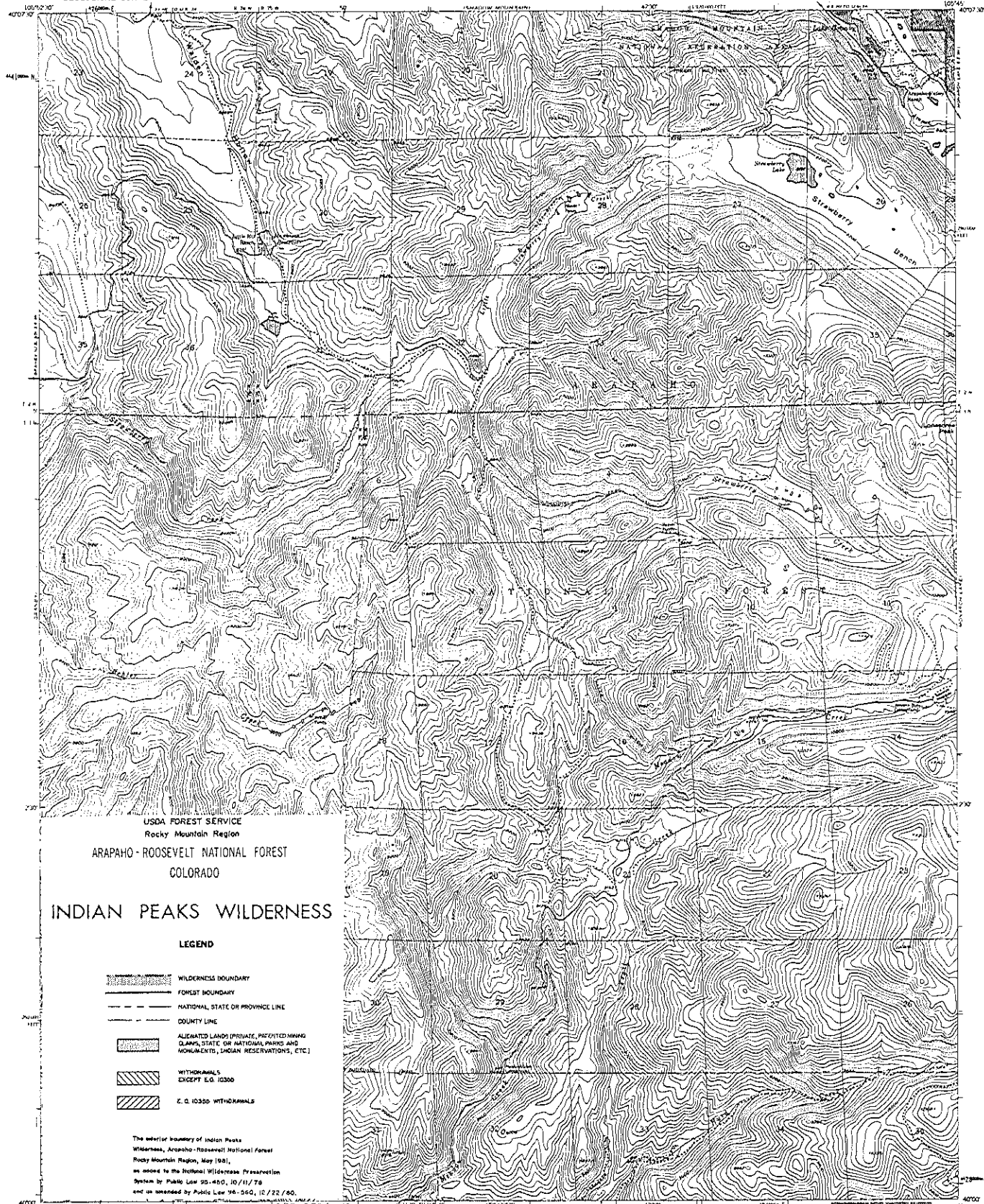
AMG 4864 II HE-SECTION 1977
SHEET 3 OF 8

THIS MAP COMPLETES WITH NATIONAL MAP ACCURACY STANDARDS
FOR SALE BY U.S. GEOLOGICAL SURVEY, DENVER, COLORADO 80225 OR WASHINGTON, D.C. 20542
A FOLDER DESCRIBING TOPOGRAPHIC MAPS AND SYMBOLS IS AVAILABLE ON REQUEST

SPECIAL PRINTING
Customers and stock and in stock limited

UNITED STATES
DEPARTMENT OF THE INTERIOR
GEOLOGICAL SURVEY

STRAWBERRY LAKE QUADRANGLE
COLORADO-GRAND CO
7.5 MINUTE SERIES (TOPOGRAPHIC)



USDA FOREST SERVICE
Rocky Mountain Region
ARAPAHO - ROOSEVELT NATIONAL FOREST
COLORADO
INDIAN PEAKS WILDERNESS

LEGEND

- WILDERNESS BOUNDARY
- FOREST BOUNDARY
- NATIONAL, STATE OR PROVINCE LINE
- COUNTY LINE
- ALIENATED LANDS (PRIVATE, PATENTED MINING CLAIMS, STATE OR NATIONAL PARKS AND MONUMENTS, INDIAN RESERVATIONS, ETC.)
- WITHDRAWALS EXCEPT E.O. 10330
- E.O. 10330 WITHDRAWALS

The interior boundary of Indian Peaks Wilderness, Arapaho-Roosevelt National Forest, Rocky Mountain Region, May 1981, as added to the National Wilderness Preservation System by Public Law 96-480, 10/11/78 and as amended by Public Law 98-560, 10/22/80.

Map produced, edited, and published by the Geological Survey

Control by USGS and USGAS

Topography from aerial photographs by photogrammetric methods

Aerial photographs taken 1953. Field check 1958

Map projection: 1927 North American datum

10,000-foot grid based on Colorado coordinate system

North arrow

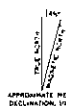
1000-meter Universal Transverse Mercator grid ticks, zone 12, shown in blue

Drilled (and) well indicator approximate locations

Cartesian grid lines printed in T 14, R 76W

because of insufficient data

Line (and) photographs are shown in black



APPROXIMATE MEAN DECLINATION, 1958

SCALE 1:24,000

1 inch = 2,000 feet

CONTOUR INTERVAL, 40 FEET

(DATA IS FROM 1:25,000)

FOR SALE BY U.S. GEOLOGICAL SURVEY, DAVENY 25, COLORADO OR WASHINGTON 25, D.C.

A FOLDER DESCRIBING TOPOGRAPHIC MAPS AND SYMBOLS IS AVAILABLE ON REQUEST

ROAD CLASSIFICATION

Light duty

Unimproved dirt

STRAWBERRY LAKE, COLO.

INDIGO-WISDOM/78

1958

SHEET 4 OF 4

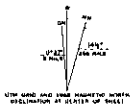
USDA FOREST SERVICE
Rocky Mountain Region
ARAPAHO - ROOSEVELT NATIONAL FOREST
COLORADO
INDIAN PEAKS WILDERNESS

LEGEND

- WILDERNESS BOUNDARY
- FOREST BOUNDARY
- NATIONAL STATE OR PROVINCE LINE
- COUNTY LINE
- ALIENATED LANDS (PRIVATE, PATENTED MINES, CLAIMS, STATE OR NATIONAL PARKS AND MONUMENTS, INDIAN RESERVATIONS, ETC.)
- WITHDRAWALS EXCEPT E.O. 10305
- E.O. 10305 WITHDRAWALS

The westerly boundary of Indian Peaks Wilderness, Arapaho-Roosevelt National Forest, Rocky Mountain Region, May 1981, as added to the National Wilderness Preservation System by Public Law 96-450, 10/11/78 and as amended by Public Law 96-546, 12/22/80.

Maplet, edited, and published by the Geological Survey as part of the Department of the Interior program for the development of the Missouri River Basin. Control by USGS and USGAS. Topographic from aerial photographs by photogrammetric methods. Aerial photographs from 1958. Field check 1958. Polyconic projection. 1927 North American datum. 15,000-foot grid based on Colorado coordinate system, zone 10N. 1000-meter Universal Transverse Mercator and UTM, zone 12, shown in blue. Dashed lines show approximate locations. Certain land areas omitted in 1:50,000 and 1:25,000. Features of insufficient detail. Unchecked elevations are shown in parentheses.

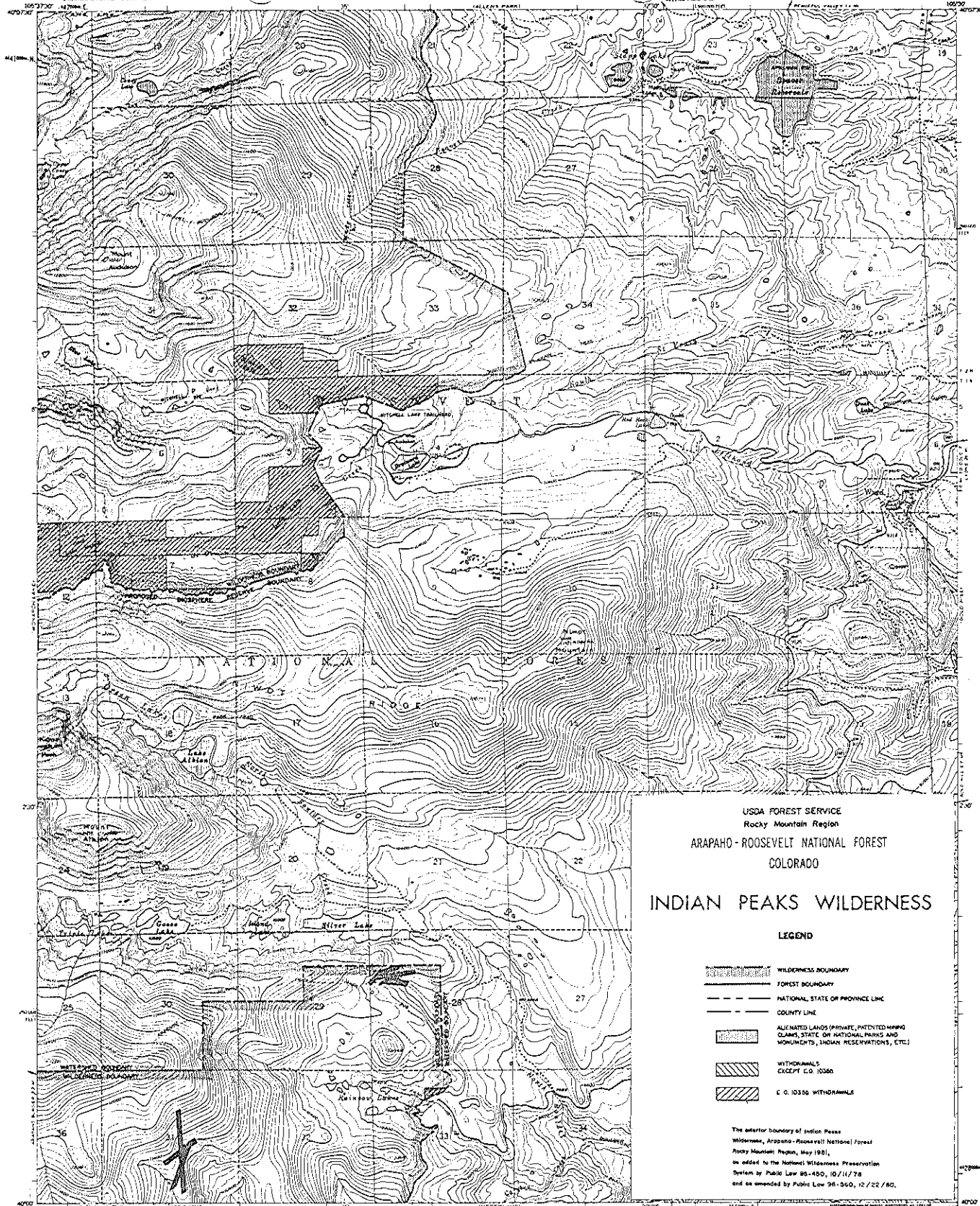


SCALE 1:24,000
CONTOUR INTERVAL 40 FEET
ELEVATION IN FEET



ROAD CLASSIFICATION
Light duty ————— Unimproved dirt —————
MONARCH LAKE, COLO.
14000-W10637.5/7.5
1958
4348 4884 U.S.P.—KEPNER 1977
SHEET 5 OF 8

THIS MAP COMPLETES WITH NATIONAL MAP ACCURACY STANDARDS
FOR SALE BY U.S. GEOLOGICAL SURVEY, DENVER, COLORADO 80225 OR WASHINGTON, D.C. 20502
A FOLDER DESCRIBING TOPOGRAPHIC MAPS AND SYMBOLS IS AVAILABLE ON REQUEST



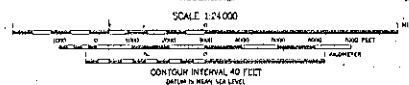
USDA FOREST SERVICE
Rocky Mountain Region
ARAPAHO-ROOSEVELT NATIONAL FOREST
COLORADO

INDIAN PEAKS WILDERNESS

LEGEND

- WILDERNESS BOUNDARY
- FOREST BOUNDARY
- NATIONAL STATE OR PROVINCE LINE
- COUNTY LINE
- ALLOCATED LANDS (PRIVATE, PATENTED MINING CLAIMS, STATE OR NATIONAL PARKS AND MONUMENTS, INDIAN RESERVATIONS, ETC.)
- WITHDRAWALS EXCEPT E.G. 10350
- E.G. 10350 WITHDRAWALS

The anterior boundary of Indian Peaks Wilderness, Arapaho-Roosevelt National Forest, Rocky Mountain Region, May 1981, as added to the National Wilderness Preservation System by Public Law 96-450, 10/11/78 and as amended by Public Law 96-260, 12/22/80.



ROAD CLASSIFICATION
Light duty ————— Unimproved dirt —————
State Route

Maped, edited, and published by the Geological Survey as part of the Department of the Interior program for the development of the Missouri River Basin. Control by USGS and USGAS.

Topography from aerial photographs by photogrammetric methods, aerial photographs taken 1953. Field check 1957.

Projection: 1927 North American datum, 10,000 foot grid based on Colorado coordinate system, north zone.

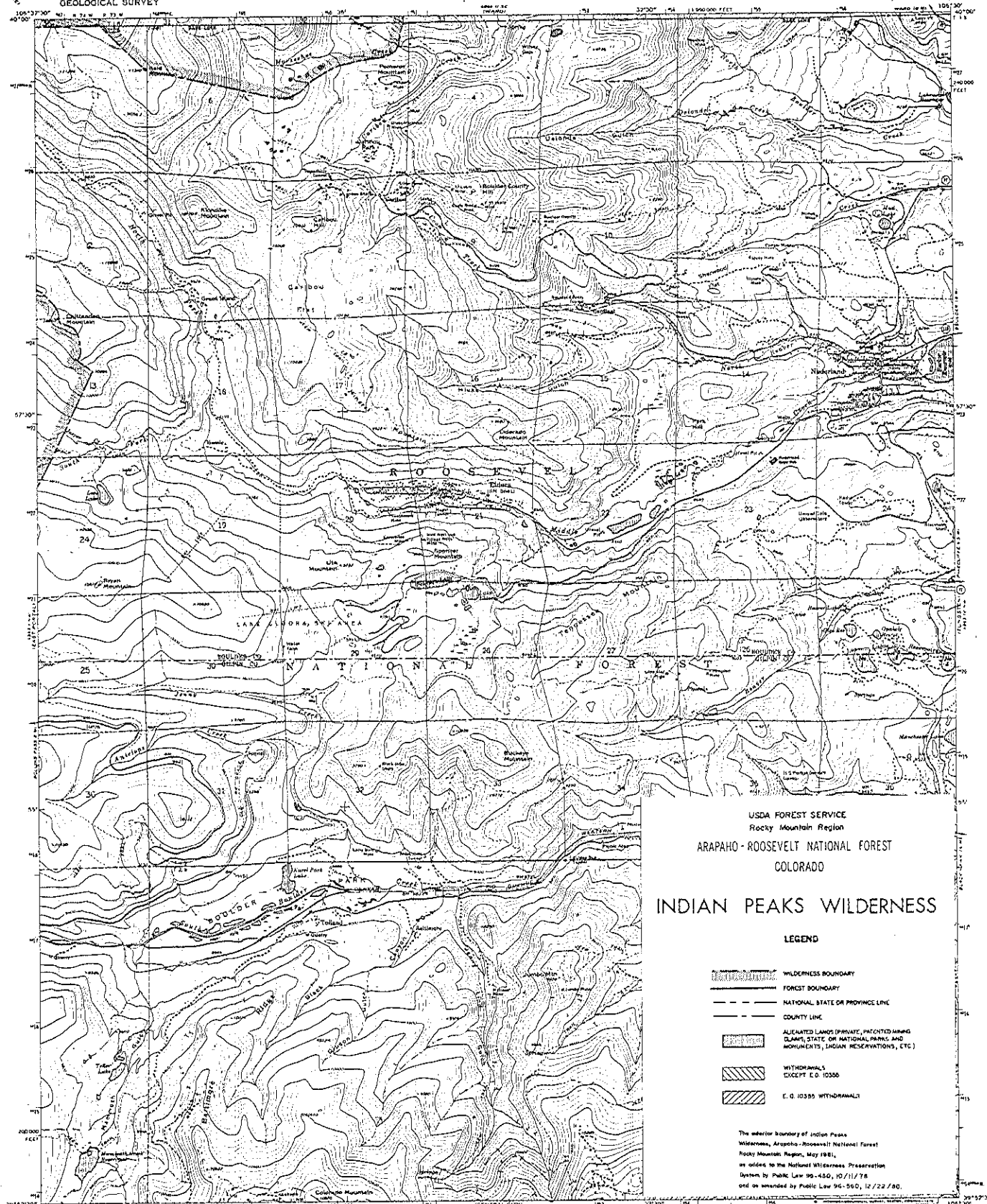
1000-meter Universal Transverse Mercator grid box, zone 12, shown at left.

Designated land lines approximate locations. Land was omitted in T1S 1 and 2N-R 74W and in parts of T1S 1 and 2N-R 73W because of insufficient data.

Unlocated streamlines are shown in brown.

THIS MAP COMPLIES WITH NATIONAL MAP ACCURACY STANDARDS FOR SALE BY U.S. GEOLOGICAL SURVEY, CENTER 25, COLORADO OF WASHINGTON 25, D. C. A FIELDER ORDERING TOPOGRAPHIC MAPS AND SYMBOLS IS AVAILABLE ON REQUEST.

WARD, COLO.
NAD00-W10500/7.5
1957



USDA FOREST SERVICE
Rocky Mountain Region
ARAPAHO-ROOSEVELT NATIONAL FOREST
COLORADO

INDIAN PEAKS WILDERNESS

LEGEND

- WILDERNESS BOUNDARY
- FOREST BOUNDARY
- NATIONAL STATE OR PROVINCE LINE
- COUNTY LINE
- ALLOCATED LANDS (PRIVATE, PATENTED, MINING CLAIMS, STATE OR NATIONAL, PARKS AND MONUMENTS, INDIAN RESERVATIONS, ETC.)
- WITHDRAWALS EXCEPT E.O. 10336
- E.O. 10336 WITHDRAWALS

The interior boundary of Indian Peaks Wilderness, Arapaho-Roosevelt National Forest, Rocky Mountain Region, May 1981, as added to the National Wilderness Preservation System by Public Law 96-450, 10/11/78, and as amended by Public Law 96-560, 12/22/80.

ROAD CLASSIFICATION

- Primary highway, hard surface
- Light-duty road, hard or improved surface
- Secondary highway, hard surface
- Unimproved road
- Interstate Route
- U.S. Route
- State Route

Map made, edited, and published by the Geological Survey
Control by USGS and NGS/NGAA
Topography by photogrammetric methods from aerial photographs taken 1971. Field checked 1972
Superimposed map dated 1942
Projection and 10,000-foot grid lines: Colorado coordinate system, north zone (Lambert conformal cone)
1:000,000 Universal Transverse Mercator grid (zone 13, shown in blue, 1927 North American datum)
Certain land lines are omitted because of insufficient data

SCALE 1:24,000
CONTOUR INTERVAL 40 FEET
NATIONAL GEODESIC VERTICAL DATUM OF 1929

THIS MAP COMPLETES WITH NATIONAL MAP ACCURACY STANDARDS
FOR SALE BY U.S. GEOLOGICAL SURVEY, DENVER, COLORADO 80229, OR RESTON, VIRGINIA 22092
A FOLDER DESCRIBING TOPOGRAPHIC MAPS AND SYMBOLS IS AVAILABLE ON REQUEST

NETERLAND, COLO.
N 3492.5-W 10530.7.5

1972
SHEET 7 OF 8

