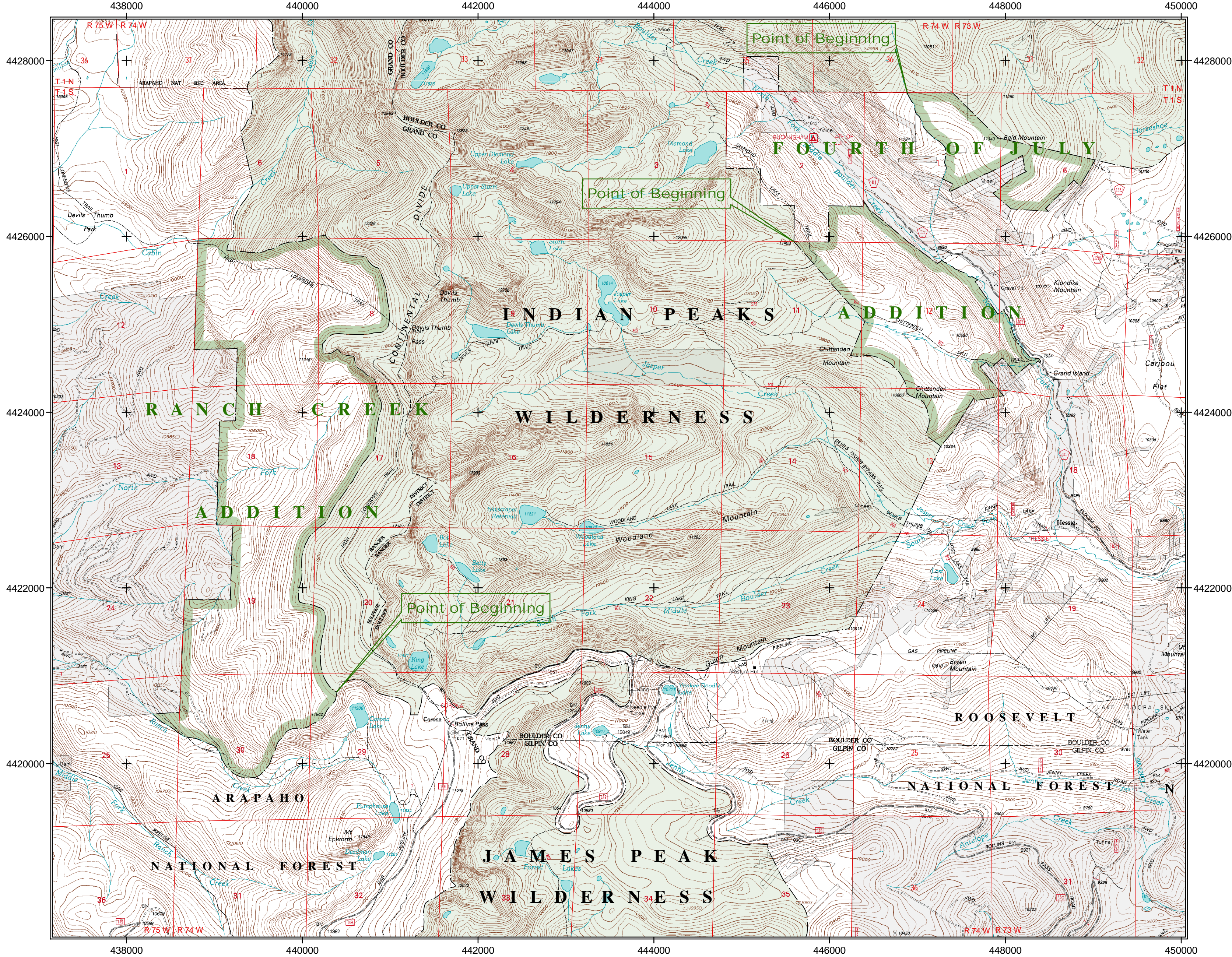


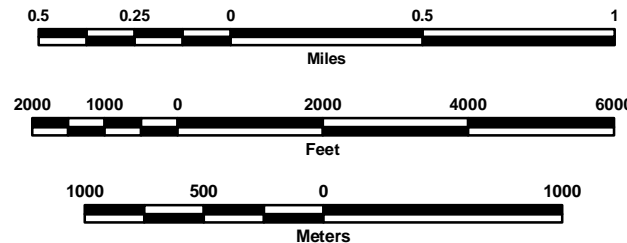
Indian Peaks Wilderness Addition

Public Law 107-216 August 21, 2002



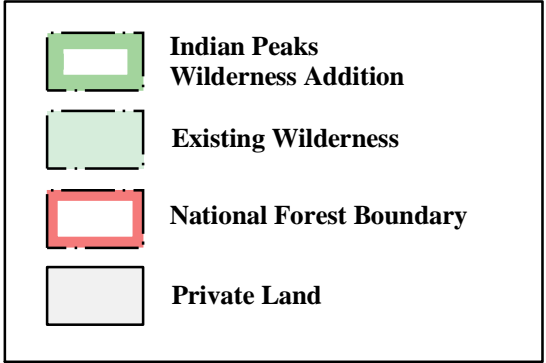
This product is reproduced from geospatial information prepared by the U.S. Department of Agriculture, Forest Service, and U.S. Geological Survey topographic map products. GIS data and map product accuracy may vary. They may be developed from sources of differing accuracy, accurate only at certain scales, based on out dated source data, etc. The Forest Service makes no expressed or implied warranty, including warranty of merchantability and fitness, with respect to the character, function, or capabilities of the data or their appropriateness for any user's purposes. Using GIS products for purposes other than those for which they were created, may yield inaccurate or misleading results. The Forest Service reserves the right to correct, update, modify, or replace, GIS products without notification. For more information, contact the USDA, Forest Service, Rocky Mountain Region, Lakewood, Colorado 303-275-5350.

This map is valid only if accompanied by the narrative Boundary Description.



Map Scale 1:31,680

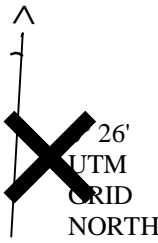
Legend



Coordinate grid is Universal Transverse Mercator, Zone 13, North American Datum of 1927, Clarke 1866 ellipsoid, units in meters.

Base map contours and elevations are expressed in North American Vertical Datum of 1929.

Contour interval 40 feet



INDIAN PEAKS
WILDERNESS ADDITION
FINAL MAP

May 10, 2007
Sheet 1 of 1

Arapaho and Roosevelt National Forests, Colorado