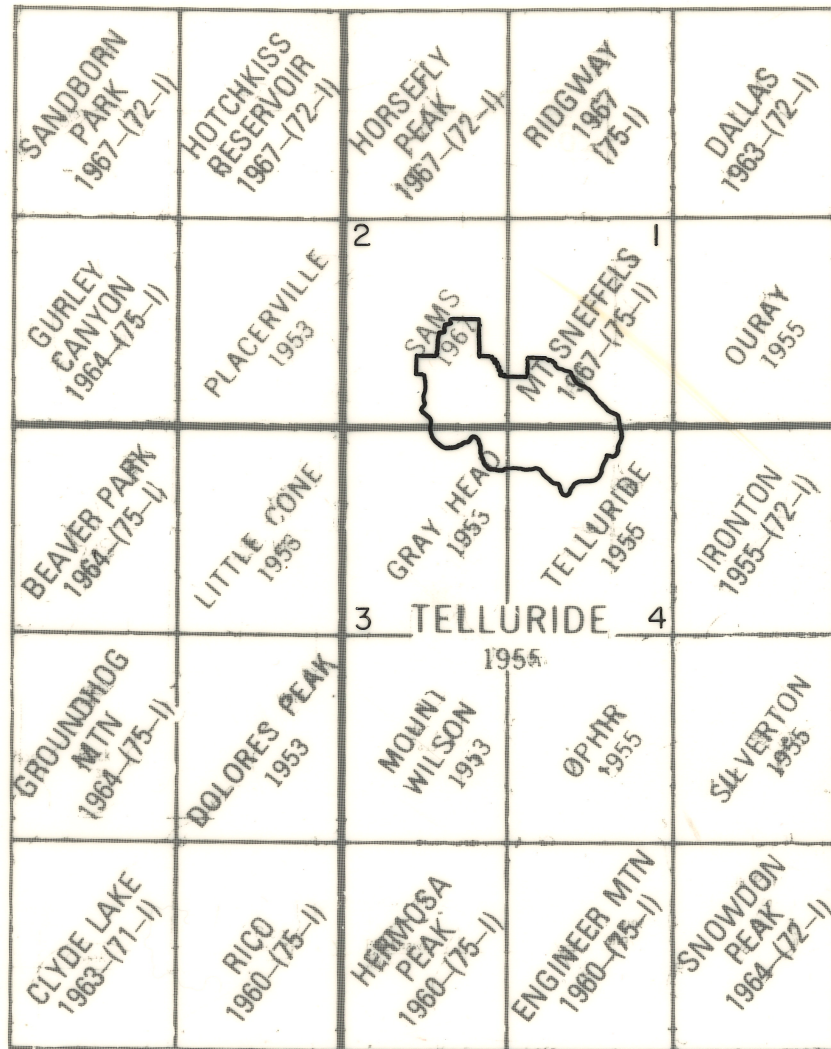


INDEX MAP

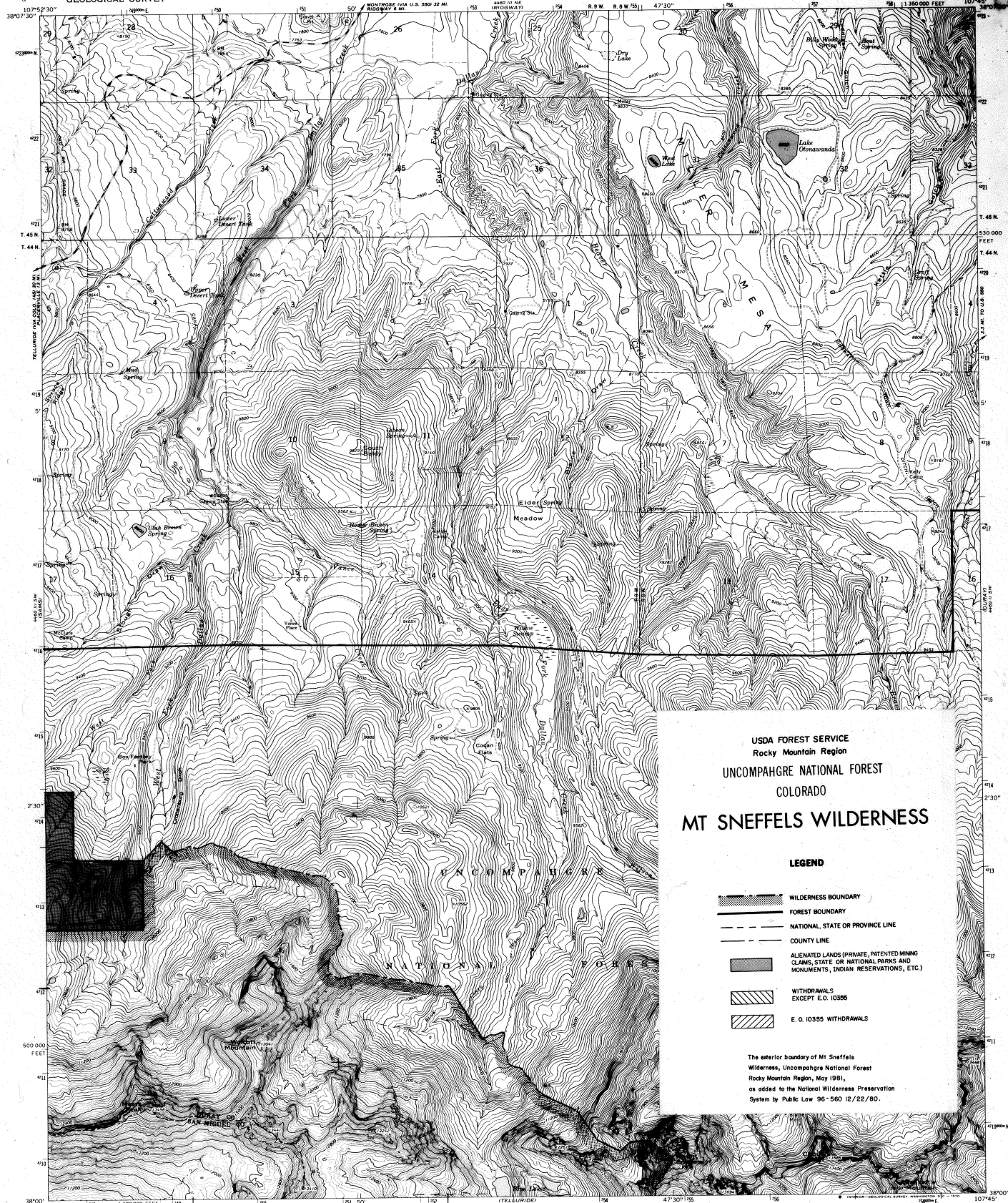
MT SNEFFELS WILDERNESS



UNITED STATES
DEPARTMENT OF THE INTERIOR
GEOLOGICAL SURVEY

ADVANCE PROOF
SUBJECT TO CORRECTION
SCALE 1:24,000

MOUNT SNEFFELS QUADRANGLE
COLORADO
7.5 MINUTE SERIES (TOPOGRAPHIC)



USDA FOREST SERVICE
Rocky Mountain Region
UNCOMPAHGRE NATIONAL FOREST
COLORADO
MT SNEFFELS WILDERNESS

LEGEND

- WILDERNESS BOUNDARY
- FOREST BOUNDARY
- NATIONAL STATE OR PROVINCE LINE
- COUNTY LINE
- ALIENATED LANDS (PRIVATE, PATENTED MINING CLAIMS, STATE OR NATIONAL PARKS AND MONUMENTS, INDIAN RESERVATIONS, ETC.)
- WITHDRAWALS EXCEPT E.O. 10355
- E.O. 10355 WITHDRAWALS

The exterior boundary of Mt. Sneffels Wilderness, Uncompahgre National Forest, Rocky Mountain Region, May 1981, as added to the National Wilderness Preservation System by Public Law 96-560 12/22/80.

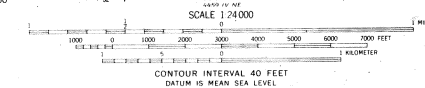
ROAD CLASSIFICATION
Secondary highway, all weather, light-duty road, all weather, hard surface
Unimproved road, fair or dry weather
State Route



MOUNT SNEFFELS, COLO.
N3300—W10745/7.5

1967
SHEET 1 OF 4

Mapped, edited, and published by the Geological Survey
Control by USGS and USC&GS
Topography by photogrammetric methods from aerial photographs taken 1965. Field checked 1967.
Polyconic projection. 1927 North American datum. 10,000-foot grid based on Colorado coordinate system, south zone.
1,000-meter Universal Transverse Mercator grid ticks, zone 13, shown in blue.
Fine red dashed lines indicate selected fence lines.
Certain land lines are omitted because of insufficient data.



THIS MAP COMPLIES WITH NATIONAL MAP ACCURACY STANDARDS
FOR SALE BY U.S. GEOLOGICAL SURVEY, DENVER, COLORADO 80225, OR WASHINGTON, D.C. 20242
A FOLDER DESCRIBING TOPOGRAPHIC MAPS AND SYMBOLS IS AVAILABLE ON REQUEST

NOTE
This print is sent to you for your review and comment. If you observe errors or have suggestions, please mark corrections on the back of the map, sign and return the copy within 150 days.
RETURN TO:
ROCKY MOUNTAIN REGION ENGINEER
U.S. GEOLOGICAL SURVEY
FEDERAL CENTER DENVER, COLORADO 80225

formerly
Rocky Mtn. Reg.
of a former
F&M
(D) 95

UNITED STATES
DEPARTMENT OF THE INTERIOR
GEOLOGICAL SURVEY

ADVANCE PROOF
SUBJECT TO CORRECTION
SCALE 1:24,000
F.

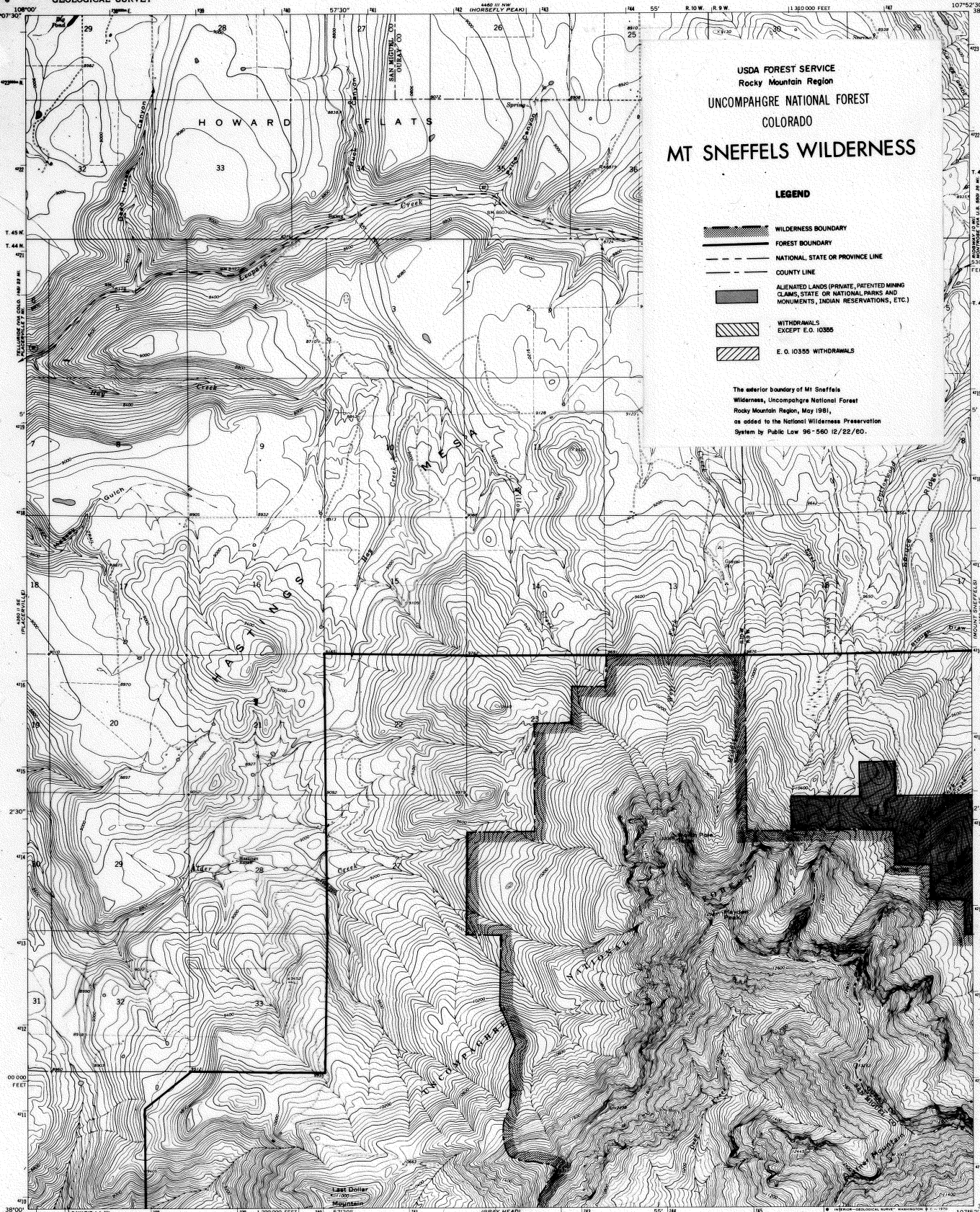
SAMS QUADRANGLE
COLORADO
7.5 MINUTE SERIES (TOPOGRAPHIC)

USDA FOREST SERVICE
Rocky Mountain Region
UNCOMPAHGRE NATIONAL FOREST
COLORADO
MT SNEFFELS WILDERNESS

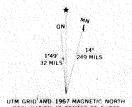
LEGEND

- WILDERNESS BOUNDARY
- FOREST BOUNDARY
- NATIONAL, STATE OR PROVINCE LINE
- COUNTY LINE
- ALIENATED LANDS (PRIVATE, PATENTED MINING CLAIMS, STATE OR NATIONAL PARKS AND MONUMENTS, INDIAN RESERVATIONS, ETC.)
- WITHDRAWALS EXCEPT E.O. 10355
- E.O. 10355 WITHDRAWALS

The exterior boundary of Mt Sneffels Wilderness, Uncompahgre National Forest, Rocky Mountain Region, May 1981, as added to the National Wilderness Preservation System by Public Law 96-580 12/22/80.



Maped, edited, and published by the Geological Survey
Control by USGS and USC&GS
Topography by photogrammetric methods from aerial
photographs taken 1965. Field checked 1967
Polyconic projection. 1927 North American datum
10,000-foot grid based on Colorado coordinate system,
south zone
1:100,000 Universal Transverse Mercator grid ticks,
zone 13, shown in blue
Fine red dashed lines indicate selected fence lines
Certain land lines are omitted because of insufficient data



SCALE 1:24,000
1 MILE
1 KILOMETER
CONTOUR INTERVAL 40 FEET
DATUM IS MEAN SEA LEVEL



ROAD CLASSIFICATION
Secondary highway, all weather. Light-duty road, all weather.
hand surface
Unimproved road, fair or dry weather
State Route

THIS MAP COMPLETES NATIONAL MAP ACCURACY STANDARDS
FOR SALE BY U.S. GEOLOGICAL SURVEY, DENVER, COLORADO 80225 OR WASHINGTON, D.C. 20242
A FOLDER DESCRIBING TOPOGRAPHIC MAPS AND SYMBOLS IS AVAILABLE ON REQUEST

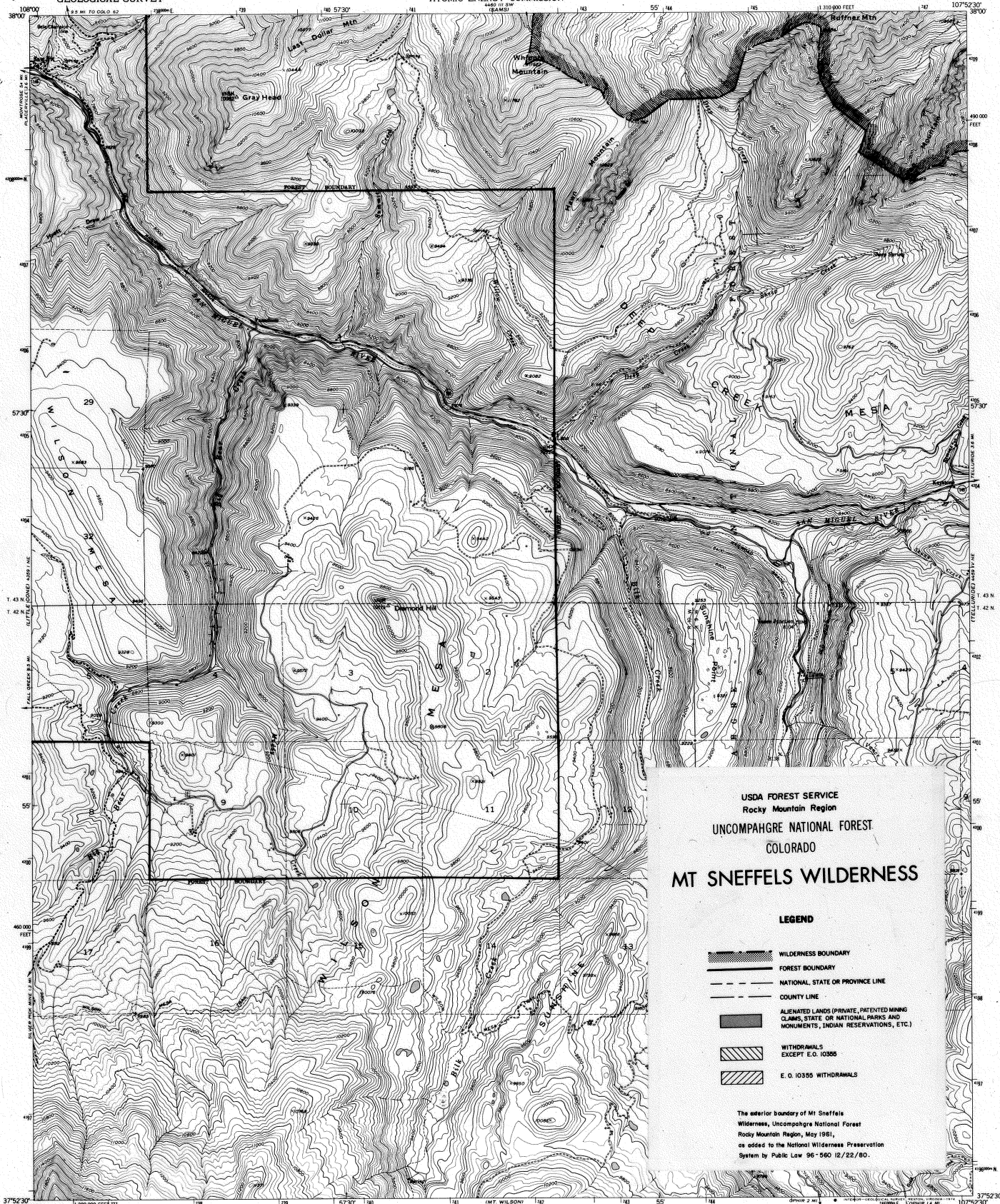
NOTE
This proof is given to you for your review and comment.
If you desire a copy of this map, please request a copy from
the nearest office of the Geological Survey.

SAMS, COLO.
N3800-W10752.5-7.5
1967

SHEET 2 OF 4

RETURN TO
ROCKY MOUNTAIN REGION ENGINEER
U.S. GEOLOGICAL SURVEY
FEDERAL CENTER DENVER, COLORADO 80225

Geology
Rocky Mtn. Reg.
FW
(10)
BGM (Pending)
js



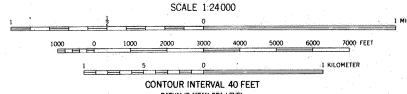
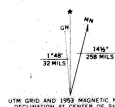
USDA FOREST SERVICE
Rocky Mountain Region
UNCOMPAHGRE NATIONAL FOREST
COLORADO
MT SNEFFELS WILDERNESS

LEGEND

- WILDERNESS BOUNDARY
- FOREST BOUNDARY
- NATIONAL STATE OR PROVINCE LINE
- COUNTY LINE
- ALIENATED LANDS (PRIVATE, PATENTED MINING CLAIMS, STATE OR NATIONAL PARKS AND MONUMENTS, INDIAN RESERVATIONS, ETC.)
- WITHDRAWALS EXCEPT E.O. 10355
- E.O. 10355 WITHDRAWALS

The exterior boundary of Mt Sneffels Wilderness, Uncompahgre National Forest, Rocky Mountain Region, May 1961, as added to the National Wilderness Preservation System by Public Law 96-560 12/22/80.

Mapped, edited, and published by Geological Survey
Control by USGS and USGS&S
Topography from aerial photographs by multiplex methods
Aerial photographs taken 1952. Field check 1953
Polyconic projection. 1927 North American datum
10000-foot grid based on Colorado coordinate system, south zone
Certain land lines in T. 42N-R. 9W, T. 42N-R. 10W, T. 43N-R. 9W, and T. 43N-R. 10W are omitted because of insufficient data
Dashed land lines indicate approximate locations
All mining features shown are inactive
1000-meter Universal Transverse Mercator grid ticks, zone 13, shown in blue



THIS MAP COMPLIES WITH NATIONAL MAP ACCURACY STANDARDS
FOR SALE BY U.S. GEOLOGICAL SURVEY, DENVER, COLORADO 80225 OR RESTON, VIRGINIA 22092
A FOLDER DESCRIBING TOPOGRAPHIC MAPS AND SYMBOLS IS AVAILABLE ON REQUEST

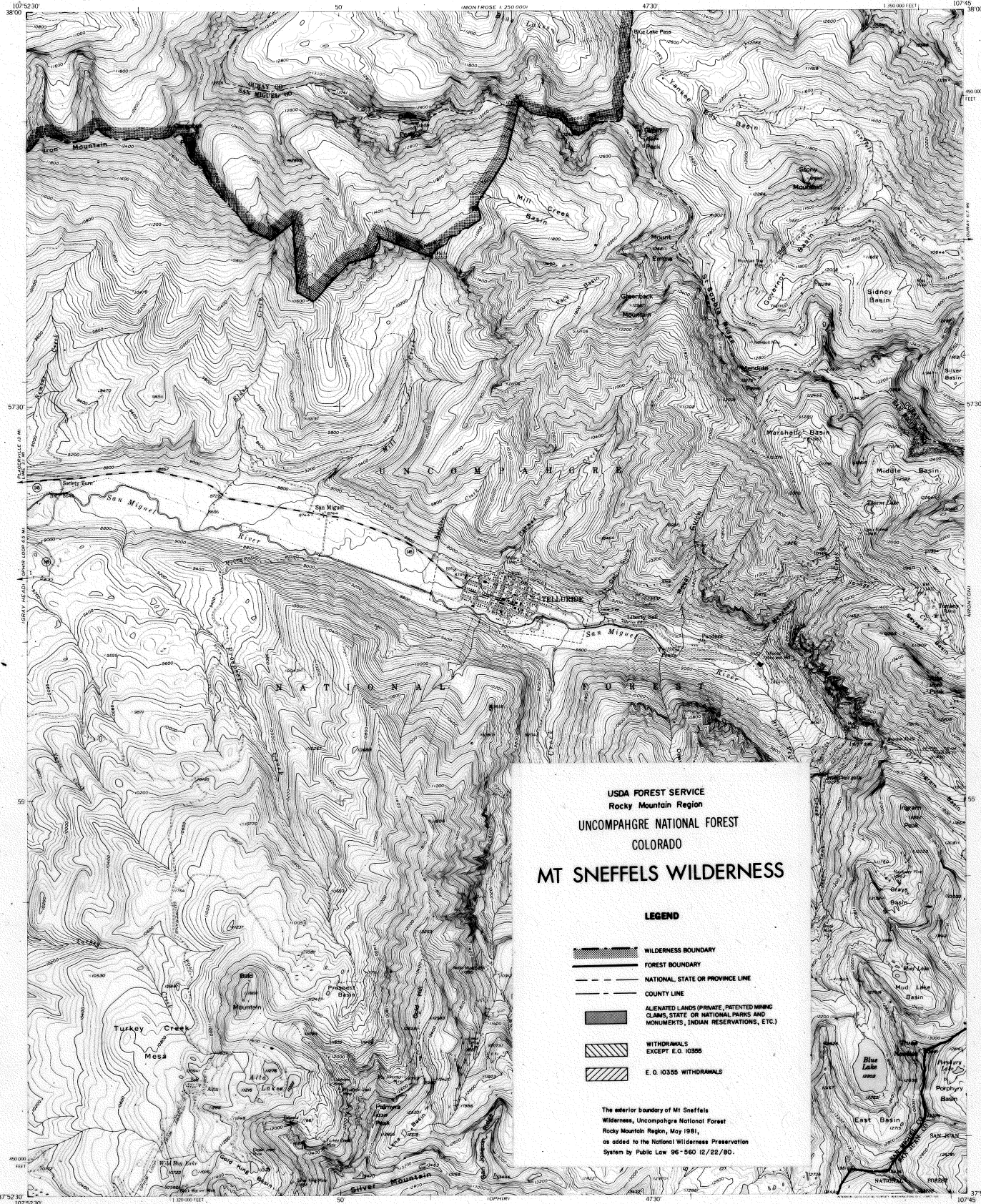


ROAD CLASSIFICATION
Medium-duty Light-duty
Unimproved dirt
State Route

GRAY HEAD, COLO.
NW/4 TELLURIDE IS QUADRANGLE
N3752.5-W10752.5/7.5

1953

AMS 4459 IV NW-SERIES 1987



USDA FOREST SERVICE
Rocky Mountain Region
UNCOMPAHGRE NATIONAL FOREST
COLORADO
MT SNEFFELS WILDERNESS

LEGEND

- WILDERNESS BOUNDARY
- FOREST BOUNDARY
- NATIONAL STATE OR PROVINCE LINE
- COUNTY LINE
- ALIENATED LANDS (PRIVATE, PATENTED MINING CLAIMS, STATE OR NATIONAL PARKS AND MONUMENTS, INDIAN RESERVATIONS, ETC.)
- WITHDRAWALS EXCEPT E.O. 10355
- E.O. 10355 WITHDRAWALS

The exterior boundary of Mt Sneffels Wilderness, Uncompahgre National Forest, Rocky Mountain Region, May 1981, as added to the National Wilderness Preservation System by Public Law 96-560 12/22/80.

Maped, edited, and published by the Geological Survey
Control by USGS and USCGS
Topography from aerial photographs by multiplex methods
Aerial photographs taken 1951-1952. Field check 1955
Polyconic projection. 1927 North American datum
10,000 foot grid based on Colorado coordinate system,
south zone
Land lines are omitted in T4, 42 and 43 N-Rs 8 and 9W
because of insufficient data
Unchecked elevations are shown in brown

APPROXIMATE MEAN
DECLINATION, 1955

CONTOUR INTERVAL 40 FEET
(DATA TO NEAR SEA LEVEL)

FOR SALE BY U.S. GEOLOGICAL SURVEY, DENVER 2, COLORADO OR WASHINGTON 25, D.C.
A FOLDER DESCRIBING TOPOGRAPHIC MAPS AND SYMBOLS IS AVAILABLE ON REQUEST

ROAD CLASSIFICATION
Medium duty ——— Light duty ———
Unimproved dirt ———
State Route

COLORADO
QUADRANGLE LOCATION

TELLURIDE, COLO.
NE 1/4 TELLURIDE 25 QUADRANGLE
N3752 5-W10745/75