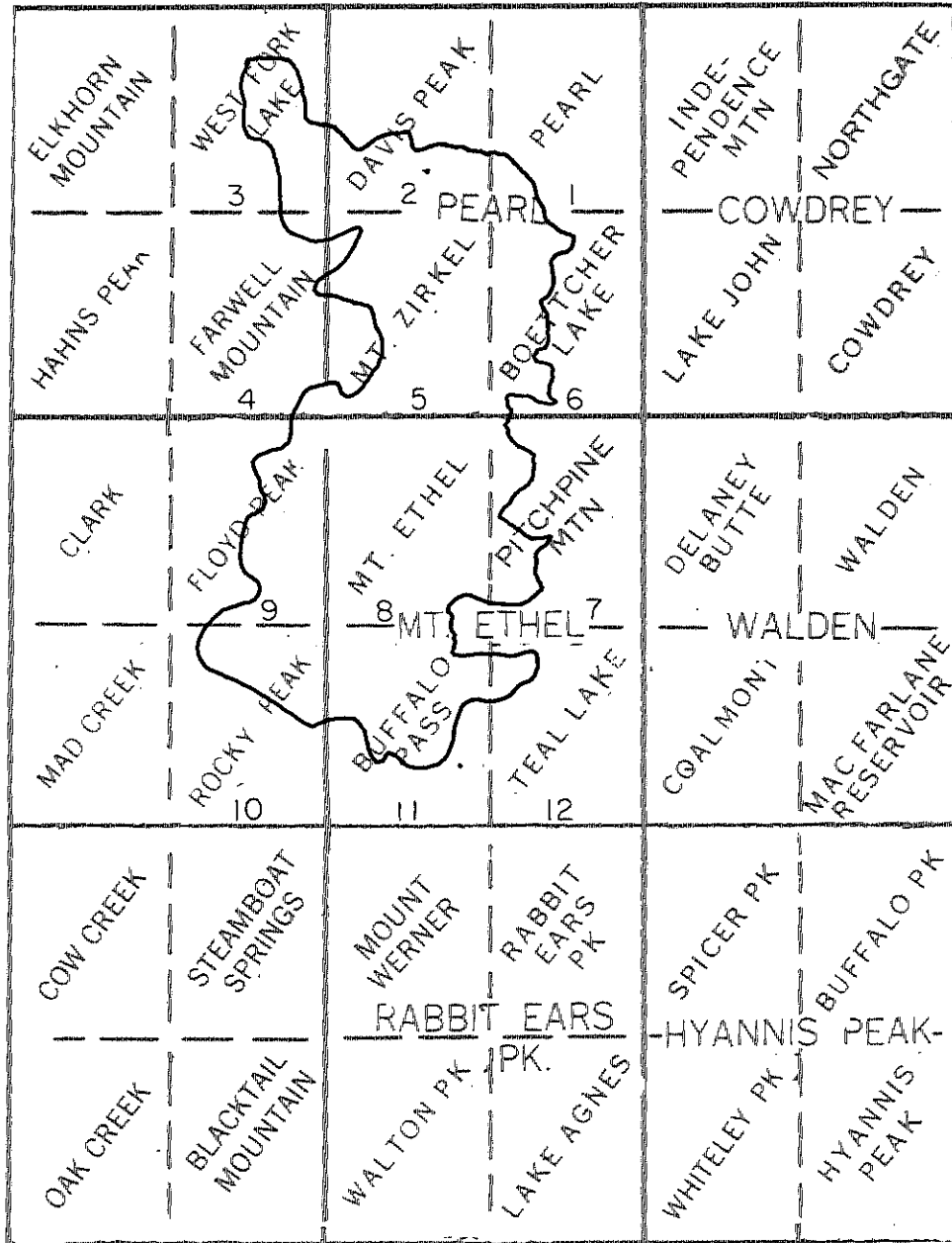
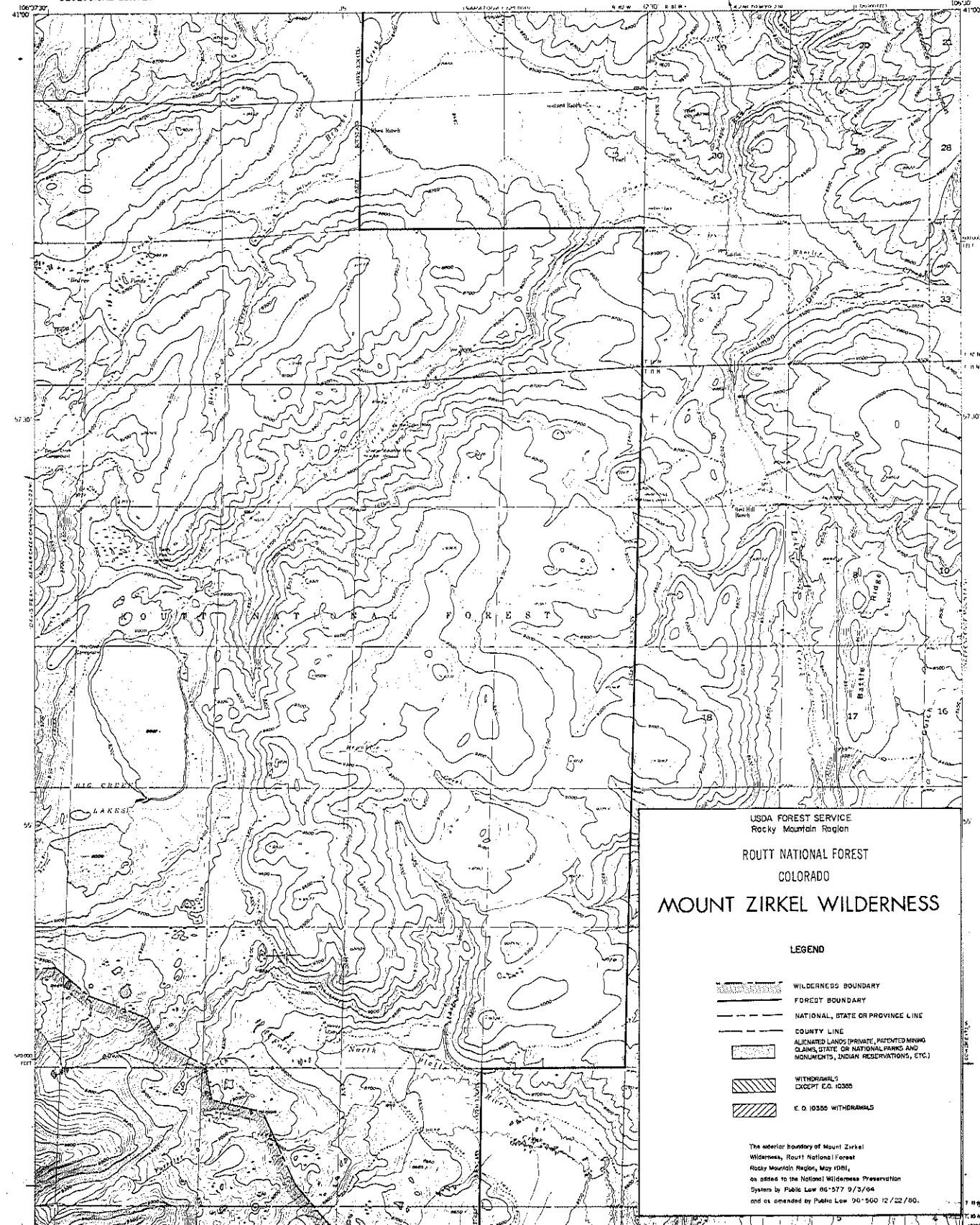


INDEX MAP

MOUNT ZIRKEL WILDERNESS





USDA FOREST SERVICE
Rocky Mountain Region

ROUTT NATIONAL FOREST
COLORADO

MOUNT ZIRKEL WILDERNESS

LEGEND

- WILDERNESS BOUNDARY
- FOREST BOUNDARY
- NATIONAL, STATE OR PROVINCE LINE
- COUNTY LINE
- ALIENATED LANDS (PRIVATE, PATENTED MINING CLAIMS, STATE OR NATIONAL PARKS AND MONUMENTS, INDIAN RESERVATIONS, ETC.)
- WITHDRAWALS EXCEPT E.O. 10385
- E.O. 10385 WITHDRAWALS

The exterior boundary of Mount Zirkel Wilderness, Routt National Forest, Rocky Mountain Region, May 1981, as added to the National Wilderness Preservation System by Public Law 96-577 9/3/80 and as amended by Public Law 96-500 12/22/80.

ROAD CLASSIFICATION
Light duty ————— Unimproved dirt —————

CONTOUR INTERVAL 20 FEET
(ELEVATION IN FEET)

CONTINUATION
UNDERMINED LOCATION

PEARL, COLO.
140525-W10630/7.5
1955

Map made, edited, and published by the Geological Survey as part of the Department of the Interior program for the development of the Missouri River Basin. Control by USGS and USGS/USGS.
Topography from aerial photographs by multiple methods. Aerial photographs taken 1950. Field check 1955.
Polyconic projection. 1927 North American datum. 10,000-foot grid based on Colorado coordinate system, north zone.
Land lines in T. 10N., T. 11N., and T. 12N. R. 32W. are omitted because of insufficient data.
Unchecked elevations are shown in brown.

APPROXIMATE MEAN
ELEVATION, 1954

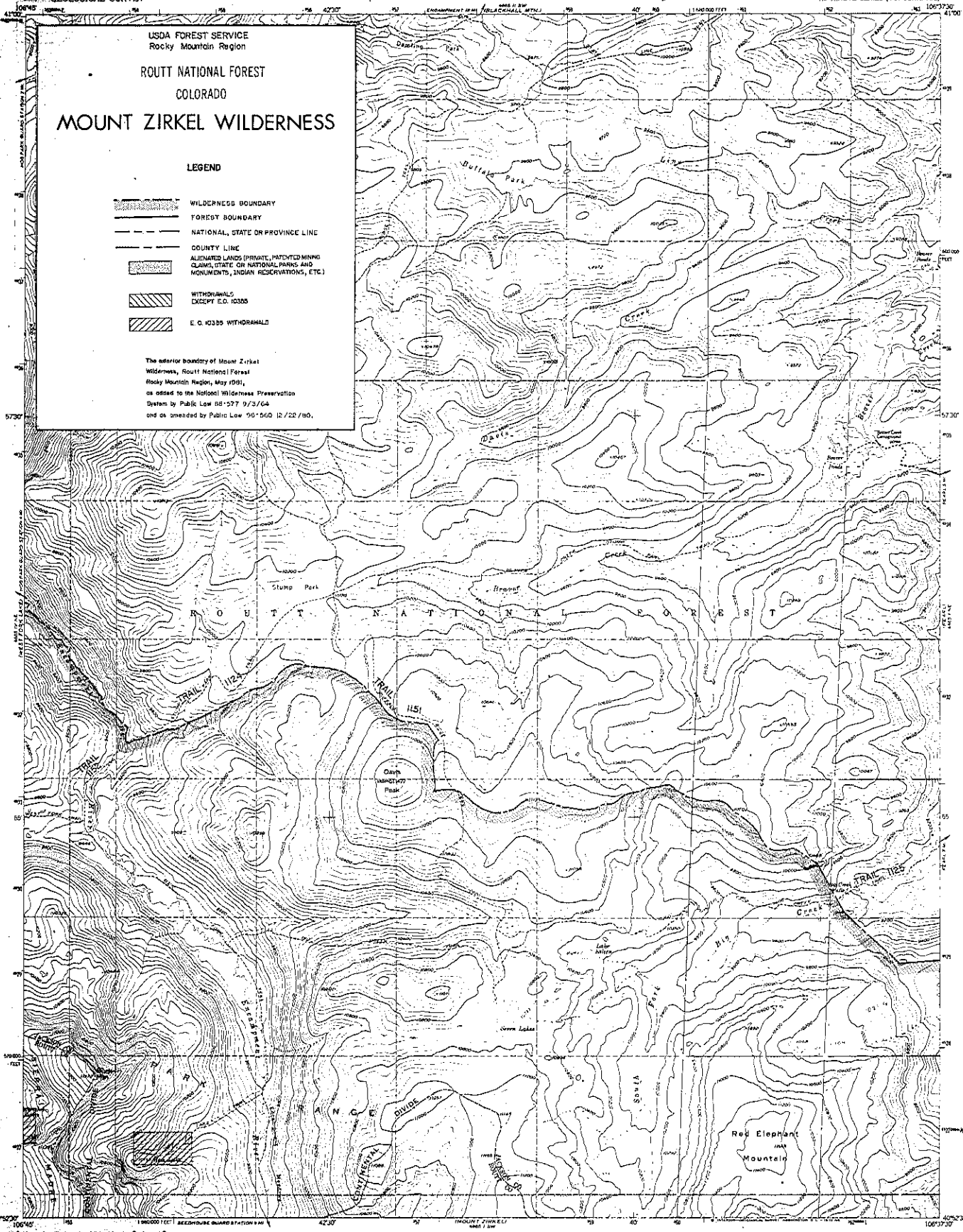
FOR SALE BY U.S. GEOLOGICAL SURVEY, DIVISION 2, COLORADO OR WASHINGTON 25, D.C.
A SCHEME OF COASTING, TOPOGRAPHIC MAPS AND CHARTS IS AVAILABLE ON REQUEST

USDA FOREST SERVICE
Rocky Mountain Region
ROUTT NATIONAL FOREST
COLORADO
MOUNT ZIRKEL WILDERNESS

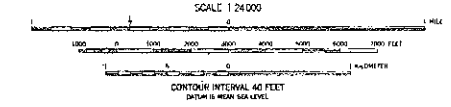
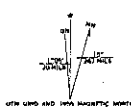
LEGEND

- WILDERNESS BOUNDARY
- FOREST BOUNDARY
- NATIONAL, STATE OR PROVINCE LINE
- COUNTY LINE
- ALIENATED LANDS (PRIVATE, PATENTED MINING CLAIMS, STATE OR NATIONAL PARKS AND MONUMENTS, INDIAN RESERVATIONS, ETC.)
- WITHDRAWALS EXCEPT E.O. 10335
- E.O. 10335 WITHDRAWALS

The exterior boundary of Mount Zirkel Wilderness, Routt National Forest, Rocky Mountain Region, May 1981, as added to the National Wilderness Preservation System by Public Law 96-577 9/3/64 and as amended by Public Law 96-560 12/22/80.



Maped, edited, and published by the Geological Survey as part of the Department of the Interior program for the development of the Missouri River Basin. Control by USGS and USGARS. Topography from aerial photographs by multiple methods. Aerial photographs taken 1952. Field check 1955. Photocopy projection, 1957 North American datum 10,000-foot grid based on Colorado coordinate system, north zone. All land lines are omitted because of insufficient data. Unchecked elevations are shown in brown. 1000-meter Universal Transverse Mercator grid ticks, zone 13, shown in blue.



FOR SALE BY U.S. GEOLOGICAL SURVEY, DENVER, COLORADO 80225, OR WASHINGTON, D.C. 20242
A POLAR GRAPHING TOPOGRAPHIC MAP AND TYPING IS AVAILABLE ON REQUEST



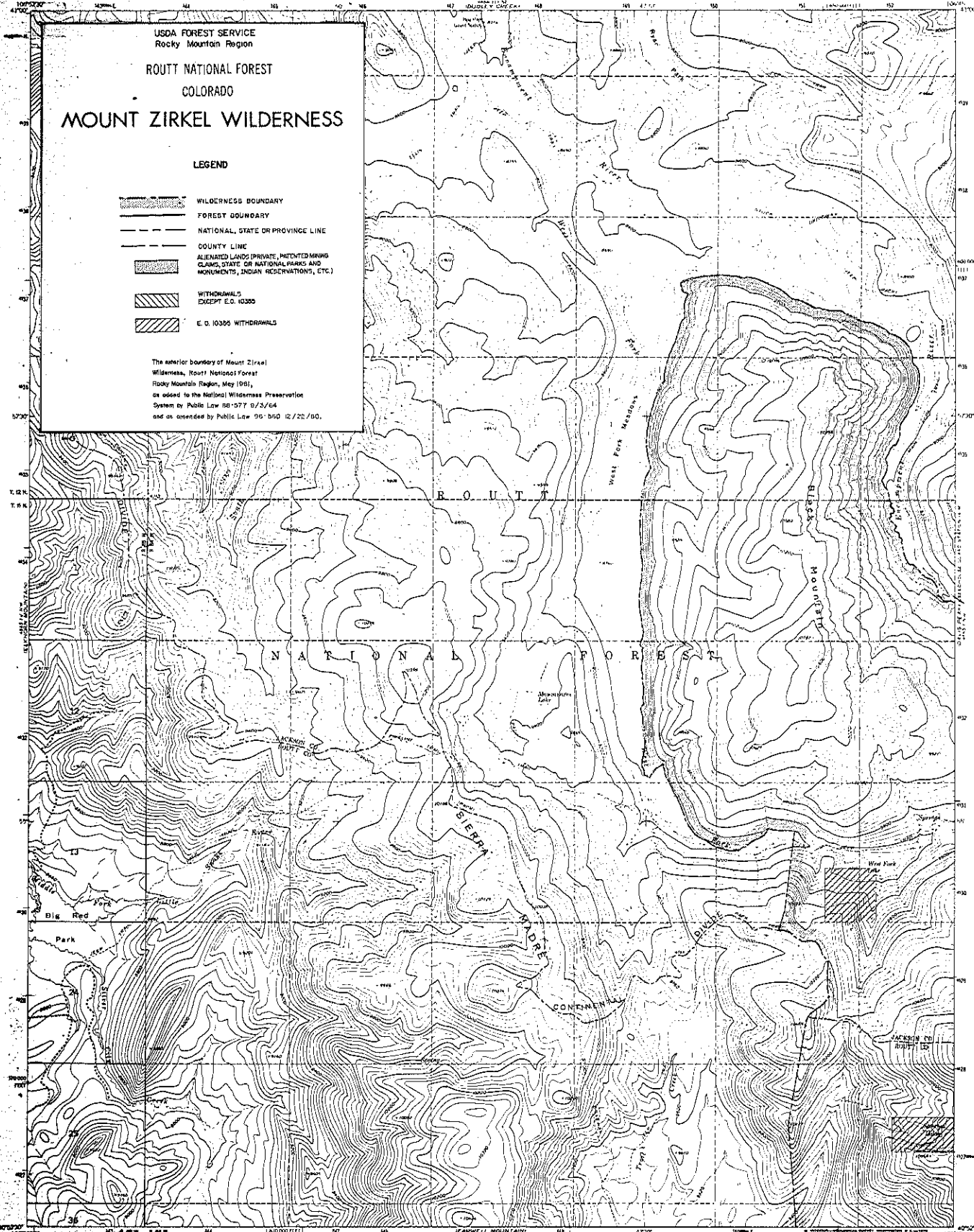
ROAD CLASSIFICATION
Unimproved dirt
SHEET 2 OF 12
DAVIS PEAK, COLO.
1955
ANS 455 1 NW-SERIES 787

USDA FOREST SERVICE
Rocky Mountain Region
ROUTT NATIONAL FOREST
COLORADO
MOUNT ZIRKEL WILDERNESS

LEGEND

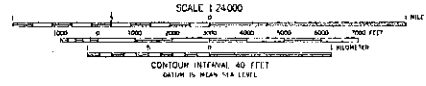
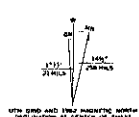
- WILDERNESS BOUNDARY
- FOREST BOUNDARY
- NATIONAL, STATE OR PROVINCE LINE
- COUNTY LINE
- ALIENATED LANDS (PRIVATE, PATENTED MINING CLAIMS, STATE OR NATIONAL PARKS AND MONUMENTS, INDIAN RESERVATIONS, ETC.)
- WITHDRAWALS EXCEPT E.O. 10300
- E.O. 10300 WITHDRAWALS

The exterior boundary of Mount Zirkel Wilderness, Routt National Forest, Rocky Mountain Region, May (1961), as added to the National Wilderness Preservation System by Public Law 86-777 8/3/64 and as amended by Public Law 90-540 12/25/68.



Mapped, edited, and published by the Geological Survey as part of the Department of the Interior program for the development of the Missouri River Basin.

Control by USGS and USACGS
Topography is photogrammetric, derived from aerial photographs taken 1957-1959. Field checked 1962.
Polyconic projection. 1927 North American datum.
10,000-foot grid based on Colorado coordinate system, north zone.
1000-meter Universal Transverse Mercator grid lines, zone 13, shown in blue.
Where omitted, land lines have not been established or are not shown because of insufficient data.



THIS MAP COMPLIES WITH NATIONAL MAP ACCURACY STANDARDS FOR SALE BY U.S. GEOLOGICAL SURVEY, DENVER, COLORADO 80225 OF WASHINGTON, D.C. 20542. A FOLDER DESCRIBING TOPOGRAPHIC MAPS AND SYMBOLS IS AVAILABLE ON REQUEST.



ROAD CLASSIFICATION
Unimproved dirt

WEST FORK LAKE, COLO.

140525-1-11064/75

1962

4875 4876 14 NT - SERIES V477

SHEET 3 OF 12

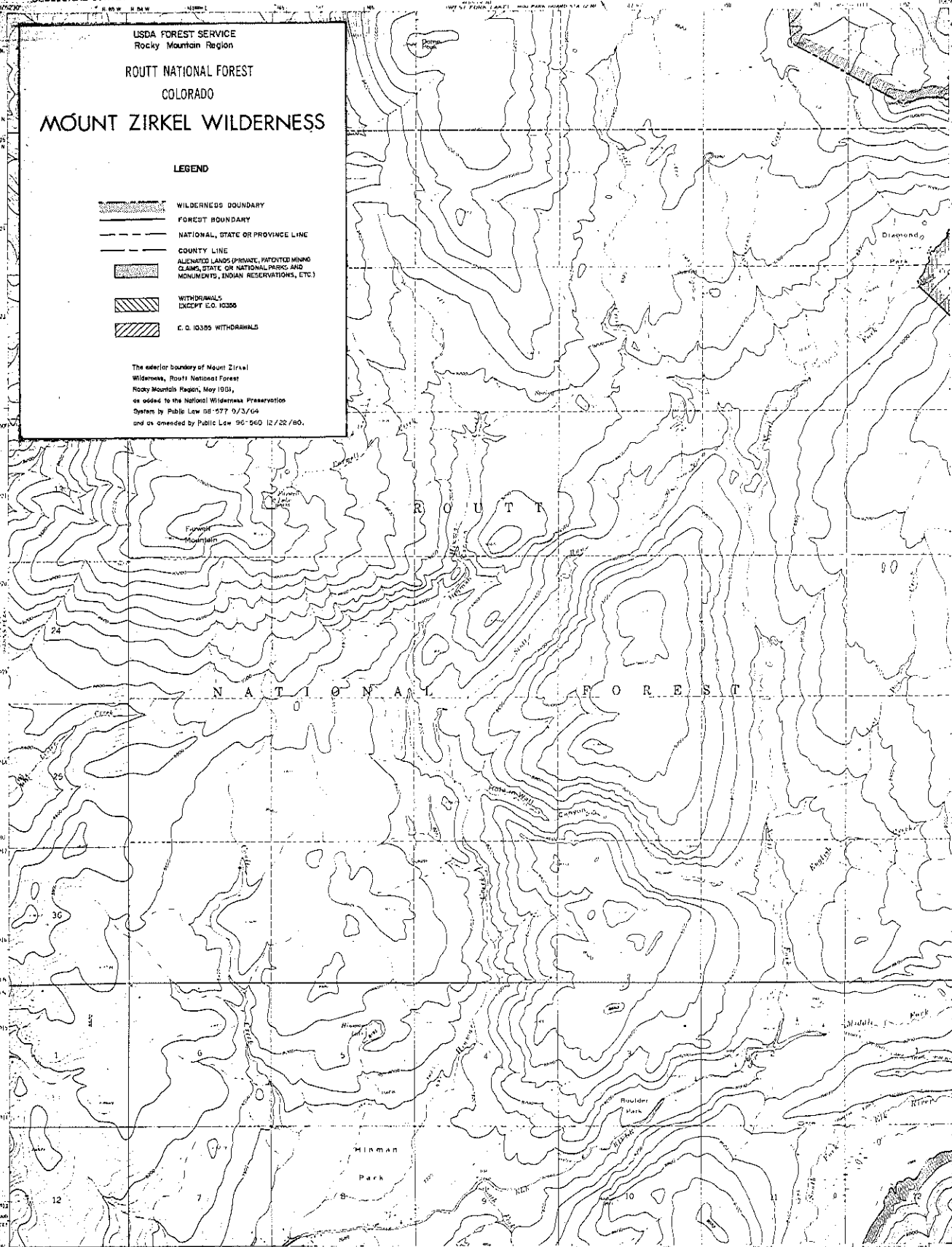
ADVANCE PROOF
SUBJECT TO CORRECTION
Scale 1:50,000

USDA FOREST SERVICE
Rocky Mountain Region
ROUTT NATIONAL FOREST
COLORADO
MOUNT ZIRKEL WILDERNESS

LEGEND

- WILDERNESS BOUNDARY
- FOREST BOUNDARY
- NATIONAL, STATE OR PROVINCE LINE
- COUNTY LINE
- ALIENATED LANDS (PRIVATE, PATENTED MINING CLAIMS, STATE OR NATIONAL PARKS AND MONUMENTS, INDIAN RESERVATIONS, ETC.)
- WITHDRAWALS
EXCEPT U.S. 10326
- U.S. 10326 WITHDRAWALS

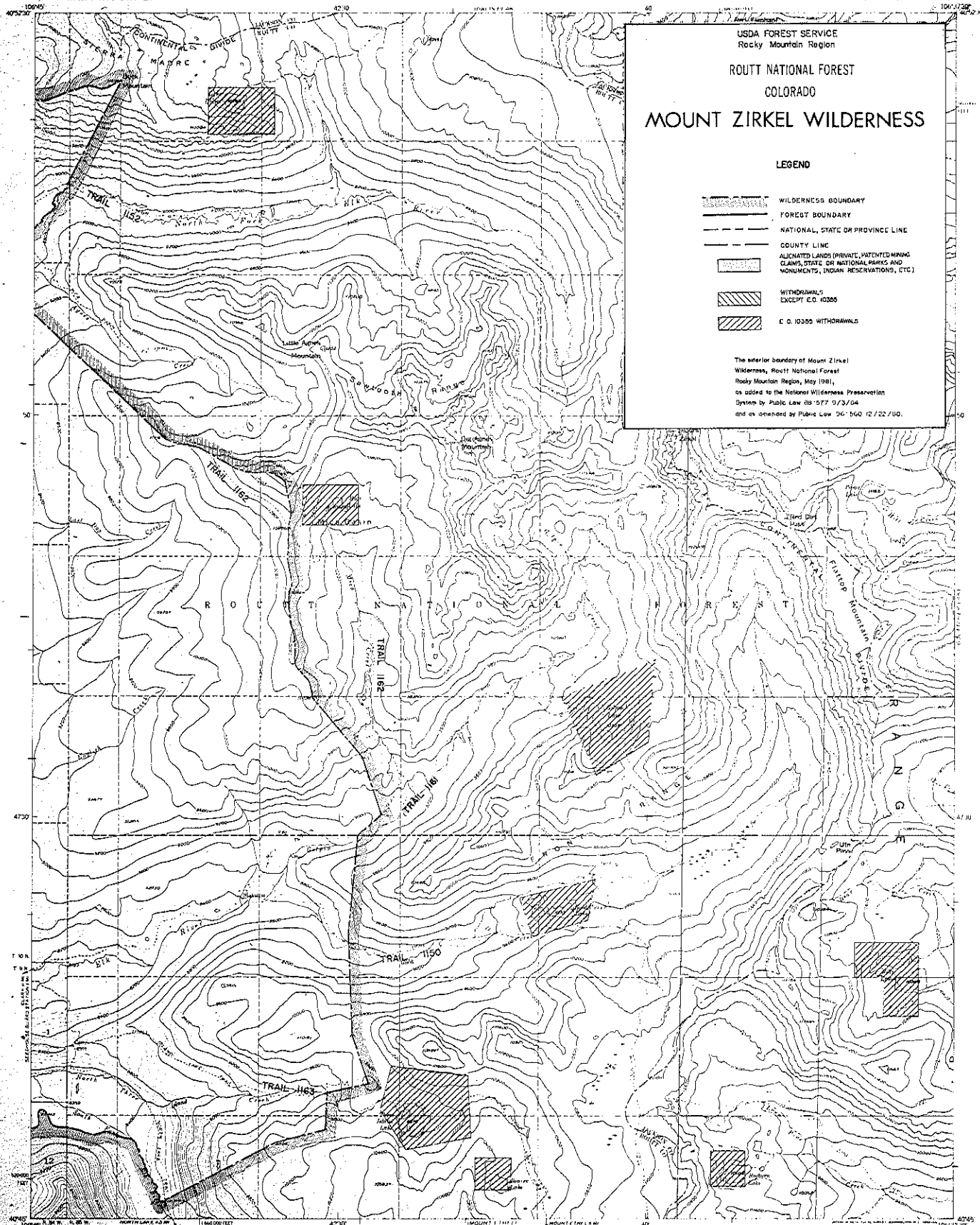
The exterior boundary of Mount Zirkel
Wilderness, Routt National Forest,
Rocky Mountain Region, May 1931,
as added to the National Wilderness Preservation
System by Public Law 88-577 9/3/64
and as amended by Public Law 96-560 12/22/80.



Maped, edited, and published by the Geological Survey
as part of the Department of the Interior program
for the development of the Missouri River Basin
Control by USGS and USFWS
Topography for planning purposes - methods: from aerial
photography taken 1957; field notes 1962
Horizontal projection: 1927 North American datum
10,000 foot grid, based on Colorado coordinate system, with zone
1000-meter Universal Transverse Mercator grid ticks,
zone 13A, datum as noted
Certain land lines are omitted because of small area and data

FOR SALE BY U.S. GEOLOGICAL SURVEY, DENVER 25, COLORADO OR WASHINGTON 25, D.C.
A (UNITED STATES GOVERNMENT PRINTING OFFICE: 1964)

FARWELL MOUNTAIN, COLO.



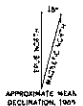
USDA FOREST SERVICE
Rocky Mountain Region
ROUTT NATIONAL FOREST
COLORADO
MOUNT ZIRKEL WILDERNESS

LEGEND

- WILDERNESS BOUNDARY
- FOREST BOUNDARY
- NATIONAL, STATE OR PROVINCE LINE
- COUNTY LINE
- ALLOCATED LANDS (PRIVATE, PATENTED MINING CLAIMS, STATE OR NATIONAL PARKS AND MONUMENTS, INDIAN RESERVATIONS, ETC.)
- WITHDRAWALS EXCEPT E.O. 10335
- E.O. 10335 WITHDRAWALS

The interior boundary of Mount Zirkel Wilderness, Routt National Forest, Rocky Mountain Region, May 1981, as added to the National Wilderness Preservation System by Public Law 93-577 9/2/74 and as amended by Public Law 96-560 12/22/78.

Mapped, edited, and published by the Geological Survey as part of the Department of the Interior program for the development of the Madison River Basin, Colorado, by USGS and USGACGS.
Topography from aerial photographs by multiple methods.
Aerial photographs taken 1950-51. Field check 1950.
Preparation projection, 1927 North American datum.
10,000-foot grid based on Colorado coordinate system.
North arrow.
All land area is unincorporated into T. 9 N. R. 34 W.
Because of insufficient data.
Unpublished information is shown in brown.



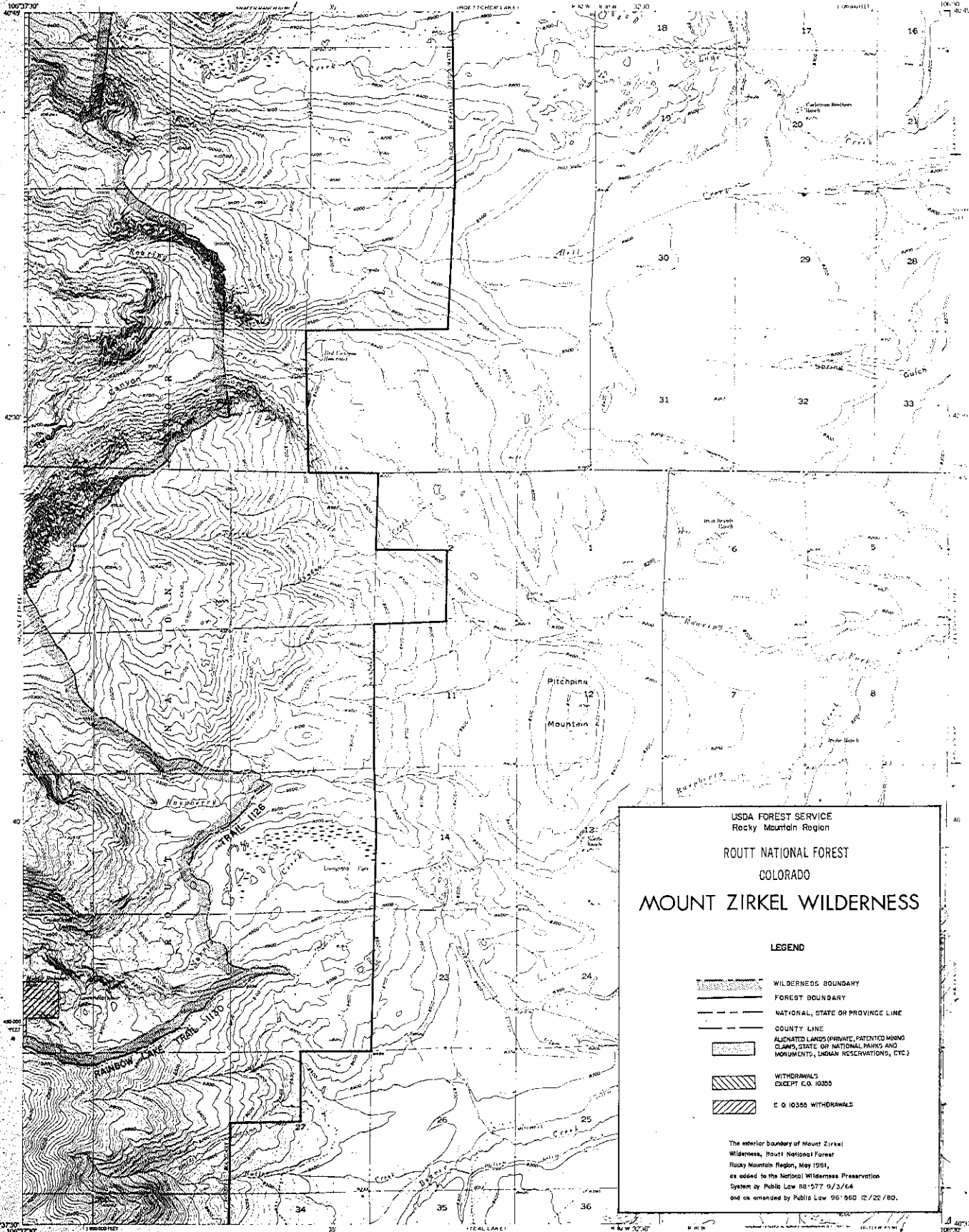
CONTOUR INTERVAL 40 FEET
UNLESS OTHERWISE NOTED

ROAD CLASSIFICATION
(Up to 100 ft. per mile)

UNITED STATES
DEPARTMENT OF THE INTERIOR
GEOLOGICAL SURVEY

ADVANCE PROOF
SUBJECT TO CORRECTION
SCALE 1:250,000

PITCHPINE MOUNTAIN QUADRANGLE
COLORADO-JACKSON CO.
7.5 MINUTE SERIES (TOPOGRAPHIC)



USDA FOREST SERVICE
Rocky Mountain Region

ROUTT NATIONAL FOREST
COLORADO

MOUNT ZIRKEL WILDERNESS

LEGEND

- WILDERNESS BOUNDARY
- FOREST BOUNDARY
- NATIONAL, STATE OR PROVINCE LINE
- COUNTY LINE
- ALLEGED LANDS (PRIVATE, PATENTED MINING CLAIMS, STATE OR NATIONAL PARKS AND MONUMENTS, INDIAN RESERVATIONS, ETC.)
- WITHDRAWALS EXCEPT E.O. 10355
- E.O. 10355 WITHDRAWALS

The exterior boundary of Mount Zirkel Wilderness, Routt National Forest, Rocky Mountain Region, May 1981, as added to the National Wilderness Preservation System by Public Law 96-577 9/2/64 and as amended by Public Law 96-560 12/20/80.

Map prepared, edited, and published by the Geological Survey as part of the Department of the Interior program for the development of the Missouri River Basin. Control by USGS and USGS-400. Topography from aerial photography by multiple methods. Aerial photography taken 1952. Field check 1955. Projection: 1927 North American datum. 10,000-foot grid based on Colorado coordinate system, north zone. Contour lines are omitted in T-8 and S-N, R-32 W. because of insufficient data. Unchecked elevations are shown in brown.



CONTOUR INTERVAL 20 FEET
(ELEVATION IN FEET)

ROAD CLASSIFICATION
Light duty Unimproved dirt

FOR SALE BY U.S. GEOLOGICAL SURVEY, DISTRICT 2, COLORADO OR WASHINGTON 25, D.C.
A FOLDER ON SCHEMATIC TOPOGRAPHIC MAPS AND SYMBOLS IS AVAILABLE FOR REFERENCE.

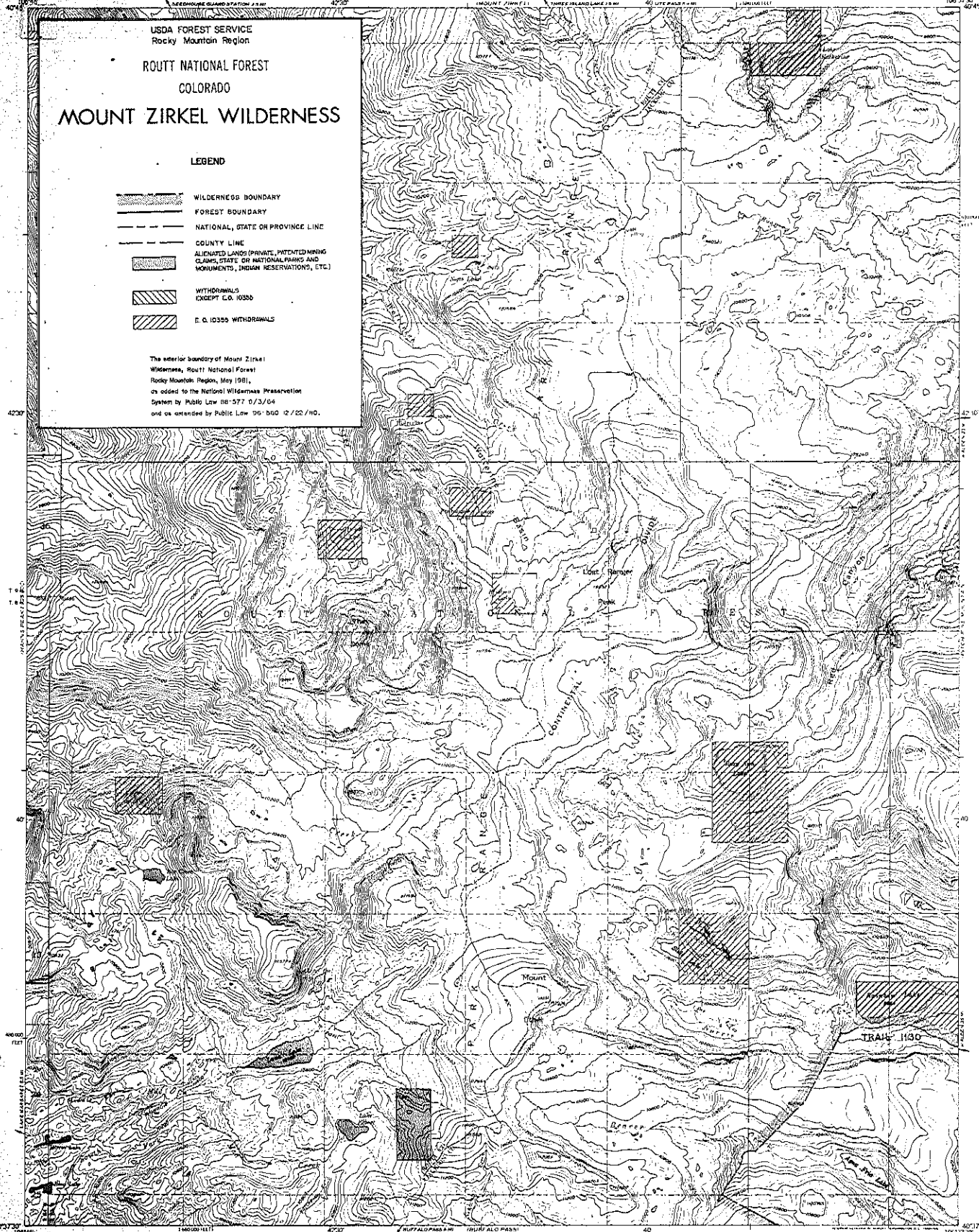
PITCHPINE MOUNTAIN, COLO.
140175--W10030/775
1995
SHEET 7 OF 12

USDA FOREST SERVICE
Rocky Mountain Region
ROUTT NATIONAL FOREST
COLORADO
MOUNT ZIRKEL WILDERNESS

LEGEND

- WILDERNESS BOUNDARY
- FOREST BOUNDARY
- NATIONAL, STATE OR PROVINCE LINE
- COUNTY LINE
- ALIENATED LANDS (PRIVATE, PATENTED MINING CLAIMS, STATE OR NATIONAL PARKS AND MONUMENTS, INDIAN RESERVATIONS, ETC.)
- WITHDRAWALS EXCEPT E.O. 10330
- E.O. 10330 WITHDRAWALS

The exterior boundary of Mount Zirkel Wilderness, Routt National Forest, Rocky Mountain Region, May 1981, as added to the National Wilderness Preservation System by Public Law 96-577 9/23/84 and as amended by Public Law 96-500 12/22/80.



Map produced, edited, and published by the Geological Survey as part of the Department of the Interior program for the development of the Missouri River Basin. Control by USGS and USGS/USGS. Topography from aerial photographs by multiple methods. Aerial photographs taken 1952. Field check 1955. Polyconic projection, 1927 North American datum 10,000-foot grid based on Universal Transverse Mercator system, north zone. All land lines are omitted except in T. 8 N. and T. 9 N. R. 34 W. because of insufficient data.



CONTOUR INTERVAL 40 FEET
(BATHY IN NEAR 1:62,500)

COLUMBIA

JOHN RIVER LOCATION

MOUNT ETHEL, COLO.
N40.17 S. - W106.37 S. / 15
1995

FOR SALE BY U.S. GEOLOGICAL SURVEY, DENVER 2, COLORADO OR WASHINGTON 25, D.C.
A 1:62,500 SERIES OF TOPOGRAPHIC MAPS AND SYMBOLS IS AVAILABLE ON MICROFILM.

USDA FOREST SERVICE
Rocky Mountain Region
ROUTT NATIONAL FOREST
COLORADO
MOUNT ZIRKEL WILDERNESS

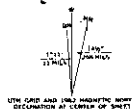
LEGEND

- WILDERNESS BOUNDARY
- FOREST BOUNDARY
- NATIONAL, STATE OR PROVINCE LINE
- COUNTY LINE
- ALIENATED LANDS (PRIVATE, PREVENTED MINING CLAIMS, STATE OR NATIONAL PARKS AND MONUMENTS, INDIAN RESERVATIONS, ETC.)
- WITHDRAWALS EXCEPT E.O. 10335
- E.O. 10335 WITHDRAWALS

The exterior boundary of Mount Zirkel Wilderness, Routt National Forest, Rocky Mountain Region, May 1981, as added to the National Wilderness Preservation System by Public Law 96-577 9/3/64 and as amended by Public Law 96-560 12/22/60.

Mapped, edited, and published by the Geological Survey as part of the Department of the Interior program for the development of the Missouri River Basin Series by USGS and USFWS.

Topography by stereographic methods from aerial photographs taken 1957 and 1958. Field checked 1962. Projection: 1927 North American datum. 10,000-foot grid based on Colorado coordinate system, north arrow. 1:250,000 scale. Universal Transverse Mercator and ticks. Zone 13, shown in blue.



CONTINUED INTERVAL 40 FEET
DEPOT: LANDS, INDEPENDENT OFFICE, COLORADO
DALLAS, TEXAS, U.S.A.

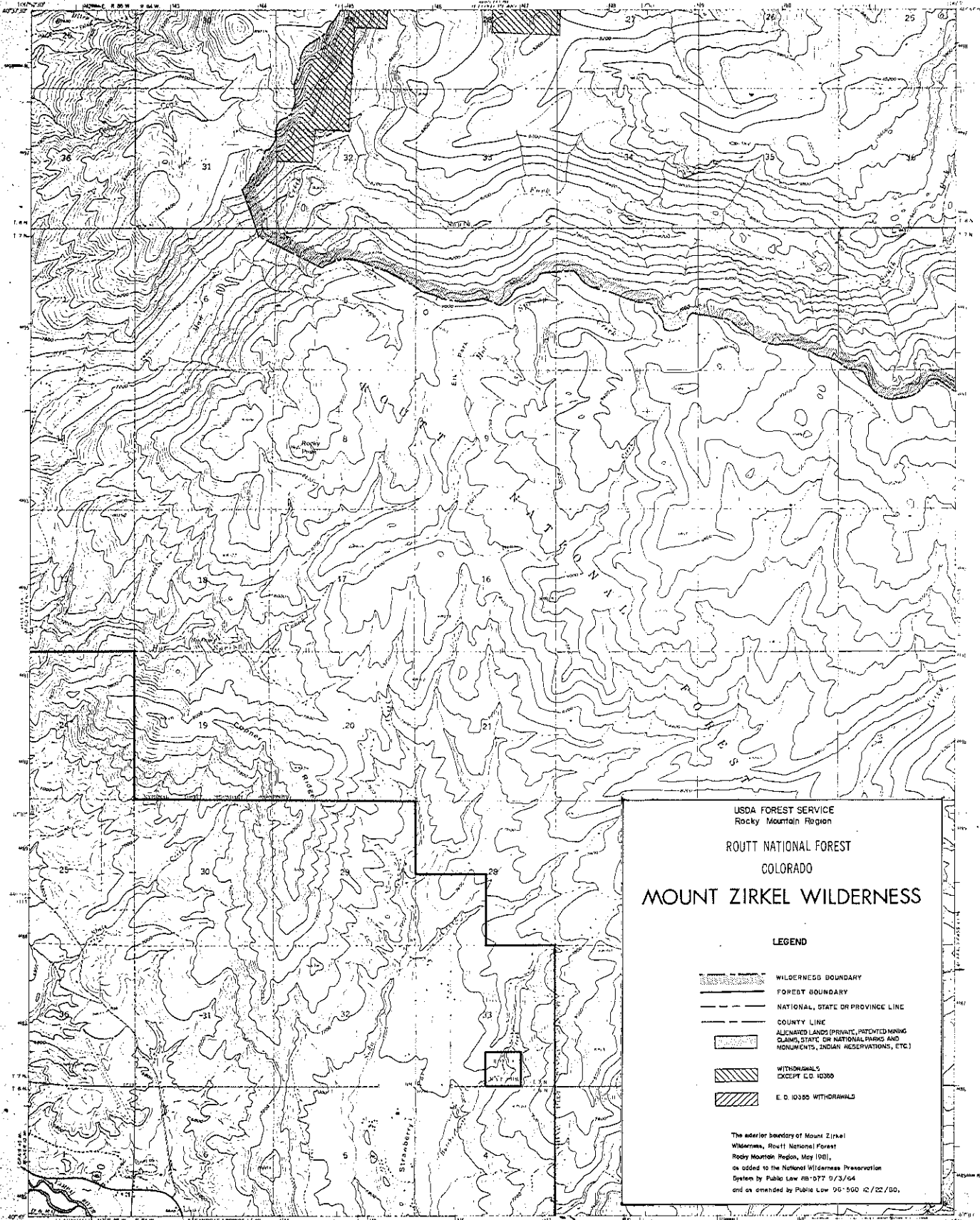
FOR SALE BY U.S. GEOLOGICAL SURVEY, DENVER 25, COLORADO OR WASHINGTON 25, D.C.
A FOLDER DESCRIBING TOPOGRAPHIC MAPS AND SYMBOLS IS AVAILABLE ON REQUEST.

NOTE

This map is based on data for past years and is subject to change. It does not show the results of recent surveys or other data that may be available on the date of this map. It is not a legal document.

ROAD CLASSIFICATION
Light duty Unimproved dirt

FLOYD PEAK, COLO
100,000' 1:250,000



USDA FOREST SERVICE
Rocky Mountain Region
ROUTT NATIONAL FOREST
COLORADO
MOUNT ZIRKEL WILDERNESS

LEGEND

- WILDERNESS BOUNDARY
- FOREST BOUNDARY
- NATIONAL, STATE OR PROVINCE LINE
- COUNTY LINE
- ALIENATED LANDS (PRIVATE, PATENTED MINING CLAIMS, STATE OR NATIONAL PARKS AND MONUMENTS, INDIAN RESERVATIONS, ETC.)
- WITHDRAWALS EXCEPT E.D. 10385
- E.D. 10385 WITHDRAWALS

The exterior boundary of Mount Zirkel Wilderness, Routt National Forest, Rocky Mountain Region, May 1961, as added to the National Wilderness Preservation System by Public Law 86-577 9/3/64 and as amended by Public Law 90-560 12/22/68.

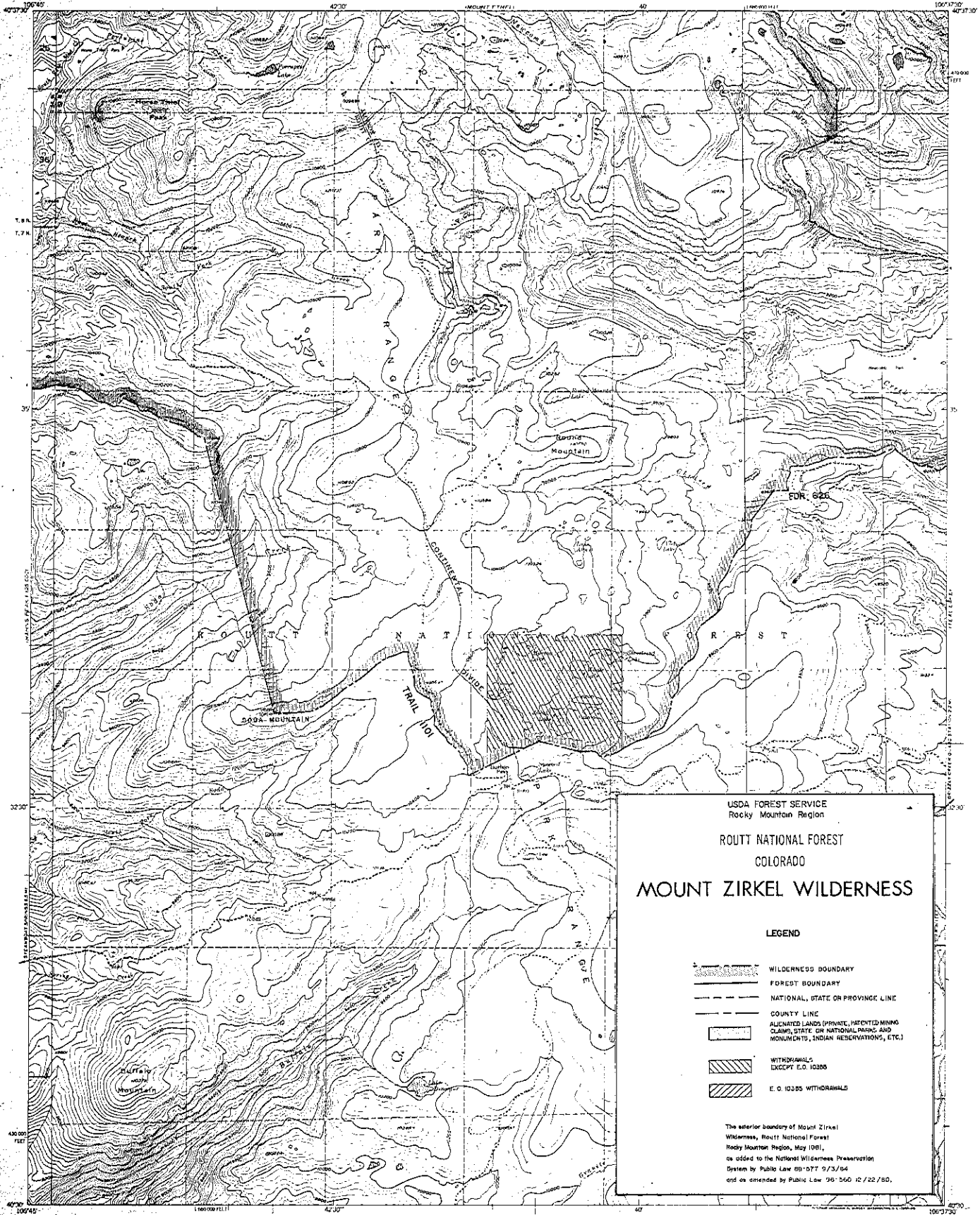
ROAD CLASSIFICATION

- Heavy duty
- Light duty
- Unimproved dirt
- U.S. Route

ROCKY PEAK, COLO.

1962

Mapped, edited, and published by the Geological Survey as part of the Department of the Interior program for the development of the Missouri River Basin. Control by USGS and USFWS. Topography by photogrammetric methods from aerial photographs taken 1957. Field checked 1962. Polyconic projection. 1927 North American datum. (5000-foot grid based on Colorado coordinate system, north zone). 12.5 miles in diameter. Fine red dashed lines indicate selected base lines.



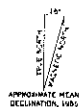
USDA FOREST SERVICE
Rocky Mountain Region
ROUTT NATIONAL FOREST
COLORADO
MOUNT ZIRKEL WILDERNESS

LEGEND

- WILDERNESS BOUNDARY
- FOREST BOUNDARY
- NATIONAL, STATE OR PROVINCE LINE
- COUNTY LINE
- ALLOCATED LANDS (PRIVATE, REPORTED MINING CLAIMS, STATE OR NATIONAL PARKS AND MONUMENTS, INDIAN RESERVATIONS, ETC.)
- WITHDRAWALS EXCEPT E.O. 10385
- E.O. 10385 WITHDRAWALS

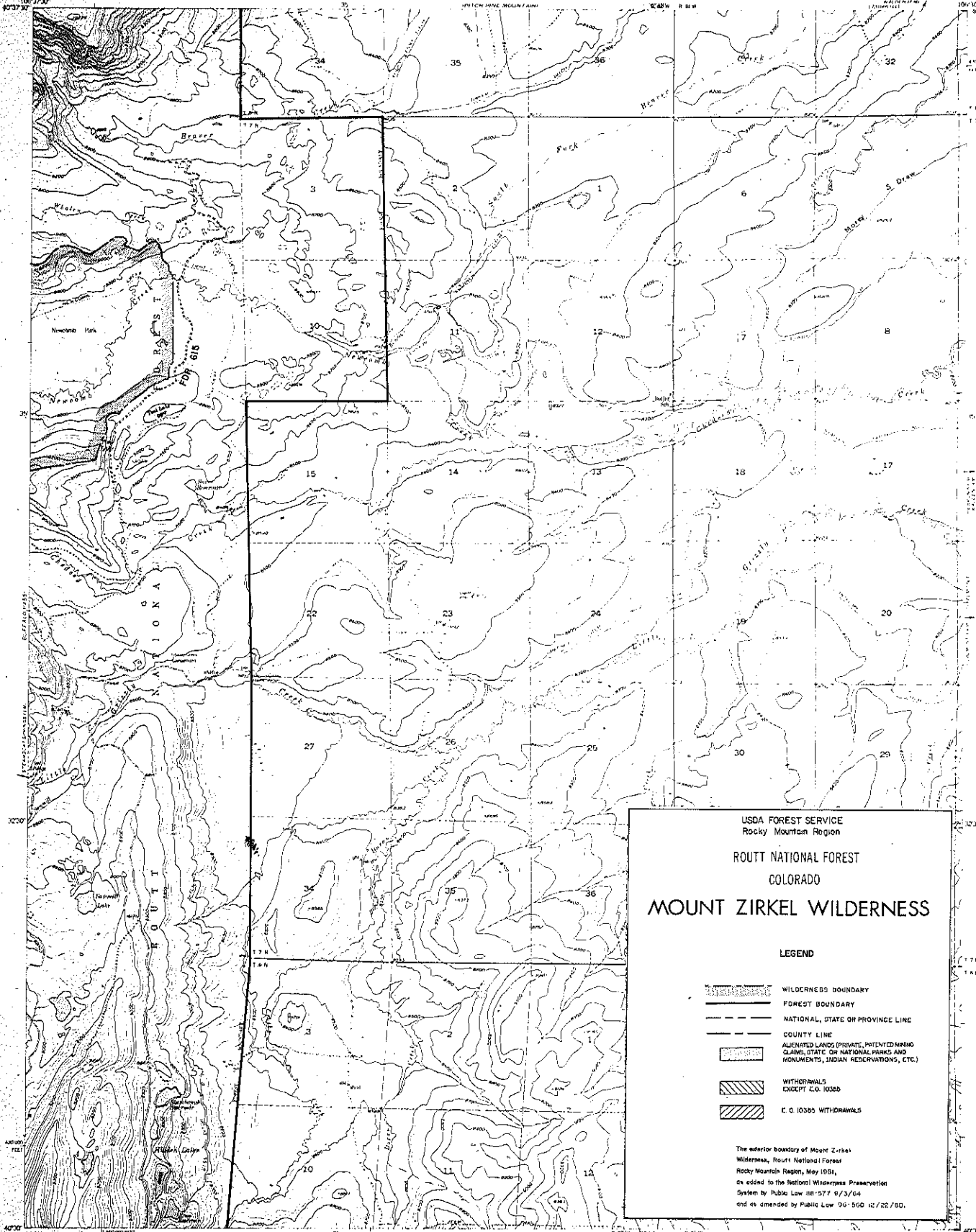
The exterior boundary of Mount Zirkel Wilderness, Routt National Forest, Rocky Mountain Region, May 1981, as added to the National Wilderness Preservation System by Public Law 96-577 9/3/84 and as amended by Public Law 96-566 12/22/80.

Map made, edited, and published by the Geological Survey as part of the Department of the Interior program for the development of the Missouri River Basin. Control by USGS and USACE. Topography from aerial photographs by multispectral methods. Aerial photographs taken 1952. Field check 1955. Polyconic projection. 1927 North American datum. 10,000-foot grid based on Colorado coordinate system, north zone. All land lines are omitted except in T. 28 N., R. 34 W. because of insufficient data. Unchecked elevations are shown in brown.



CONTOUR INTERVAL 40 FEET
(20 FT. IN MOUNTAIN PASS)

ROAD CLASSIFICATION
Unimproved road



USDA FOREST SERVICE
Rocky Mountain Region

ROUTT NATIONAL FOREST
COLORADO

MOUNT ZIRKEL WILDERNESS

LEGEND

- WILDERNESS BOUNDARY
- FOREST BOUNDARY
- NATIONAL, STATE OR PROVINCE LINE
- COUNTY LINE
- ALIENATED LANDS (PRIVATE, PATENTED MINING CLAIMS, STATE OR NATIONAL PARKS AND MONUMENTS, INDIAN RESERVATIONS, ETC.)
- WITHDRAWALS EXCEPT C.O. 10355
- C.O. 10355 WITHDRAWALS

The exterior boundary of Mount Zirkel Wilderness, Routt National Forest, Rocky Mountain Region, May 1951, as added to the National Wilderness Preservation System by Public Law 86-577 9/3/64 and as amended by Public Law 90-560 12/22/68.

Map, edited, and published by the Geological Survey as part of the Department of the Interior program for the development of the Missouri River Basin. Control by USGS, USGARS and USFS. Topography from aerial photographs by multiple methods. Aerial photography taken 1952. Field check 1955. Horizontal projection, 1927 North American datum. 10,000-foot grid based on Colorado coordinate system, north zone. Shaded relief lines indicate approximate locations. Contour lines are omitted on T-5, 7 and S-N-R-52 W. because of insufficient data. Unchecked elevations are shown in brown.

APPROXIMATE MEAN
DECLINATION, 1950

CONTOUR INTERVAL 20 FEET
(1000 FT. 2000 FT. 3000 FT.)

FOR SALE BY U.S. GEOLOGICAL SURVEY, DENVER 2, COLORADO OR WASHINGTON 25, D.C.
A FOLDER (CONTAINING TOPOGRAPHIC MAPS AND VARIOUS INFORMATION) IS AVAILABLE ON REQUEST.

ROAD CLASSIFICATION
Light duty Heavy duty

TEAL LAKE, COLO
H4010-W106.8/15
1955