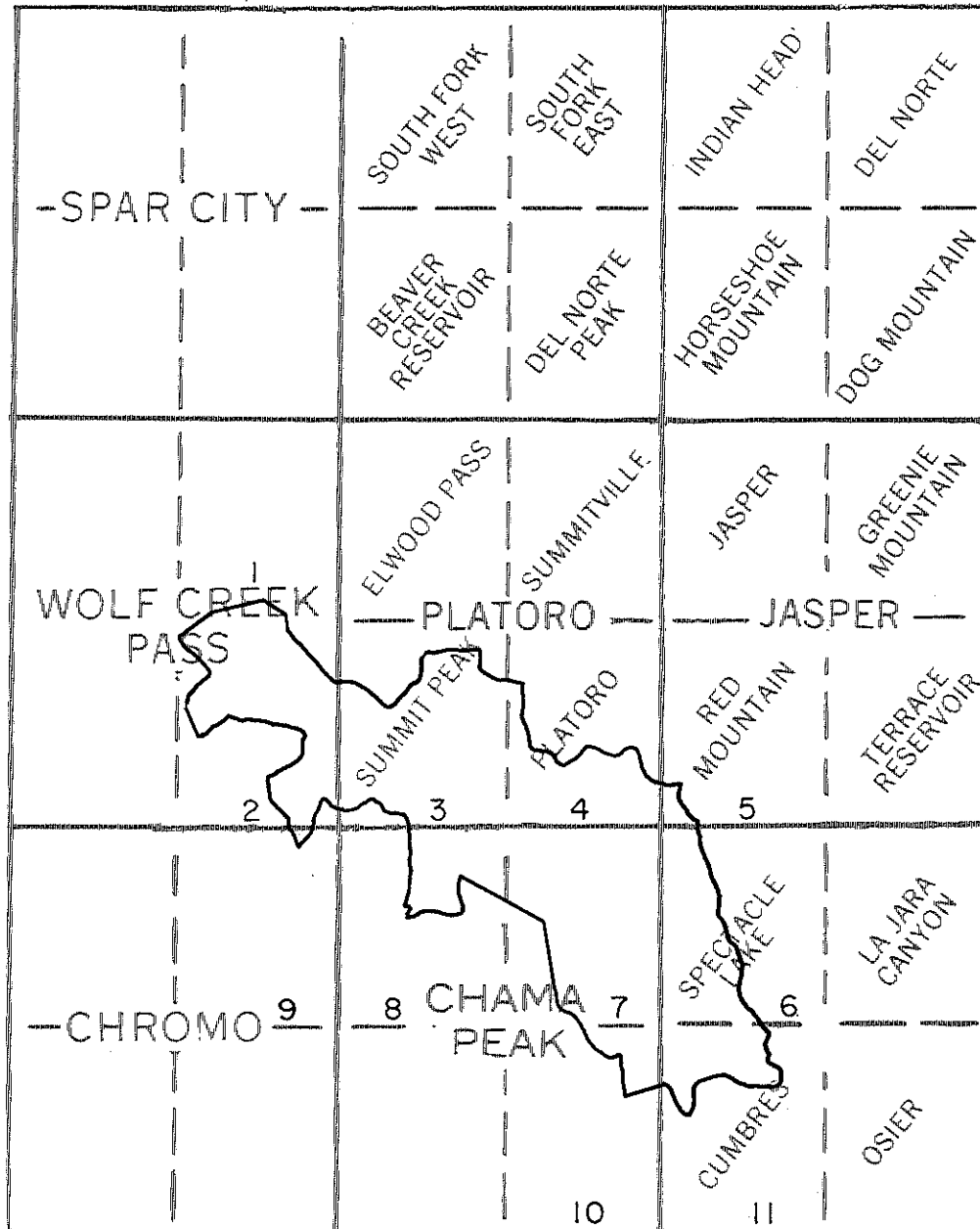


INDEX MAP

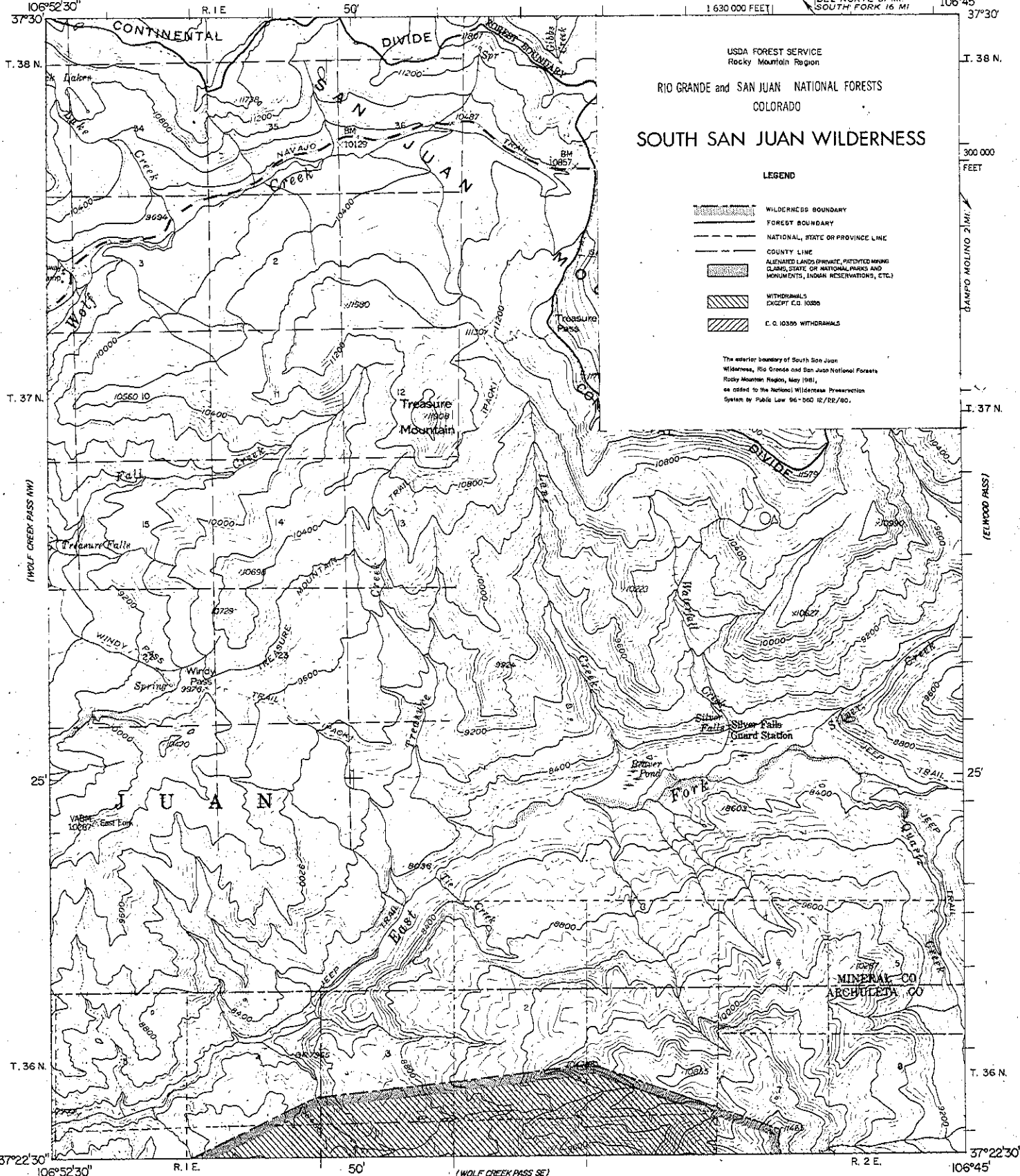
SOUTH SAN JUAN WILDERNESS

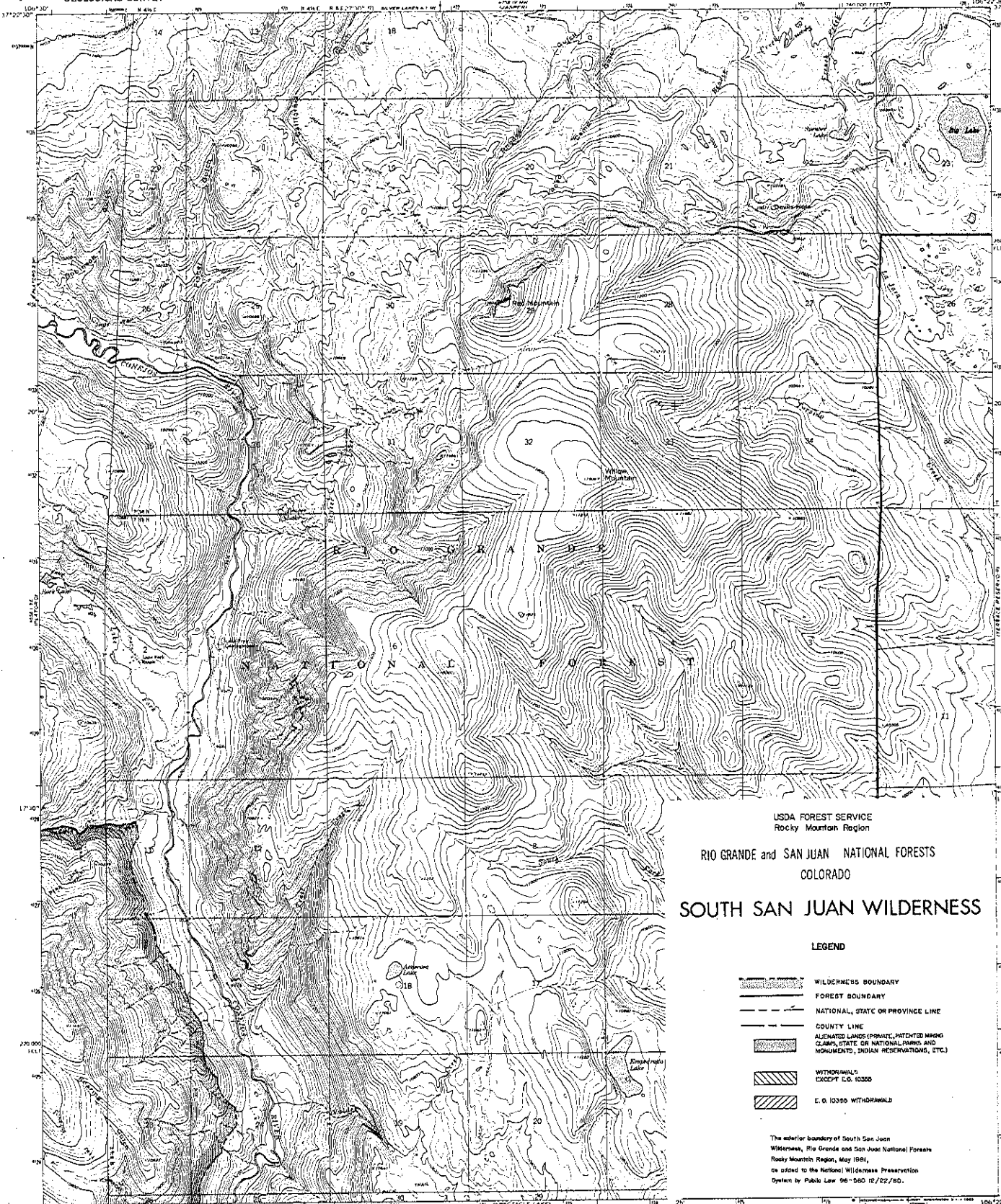


(SPAR CITY SE)

R. 2 E.
1 630 000 FEET
DEL NORTE 31 MI.
SOUTH FORK 16 MI.

106°45'
37°30'





USDA FOREST SERVICE
Rocky Mountain Region

RIO GRANDE and SAN JUAN NATIONAL FORESTS
COLORADO

SOUTH SAN JUAN WILDERNESS

LEGEND

- WILDERNESS BOUNDARY
- FOREST BOUNDARY
- NATIONAL, STATE OR PROVINCE LINE
- COUNTY LINE
- ALIENATED LANDS (PRIVATE, PATENTED MINING CLAIMS, STATE OR NATIONAL PARKS AND MONUMENTS, INDIAN RESERVATIONS, ETC.)
- WITHDRAWALS EXCEPT U.S. 10300
- U.S. 10300 WITHDRAWALS

The exterior boundary of South San Juan Wilderness, Rio Grande and San Juan National Forests Rocky Mountain Region, May 1981, is added to the National Wilderness Preservation System by Public Law 96-580 12/22/85.

Maped by the U. S. Forest Service
Edited and published by the Geological Survey
Control by USGS, USGACGS, and U. S. Forest Service
Topography by photogrammetric methods from aerial
photographs taken 1960-1961. Field checked
USGS 1967.

Projection: 1927 North American datum
10,000-foot and based on Colorado coordinate system,
south zone
1000 meter Universal Transverse Mercator grid ticks,
zone 13, shown in blue.
Certain land lines are omitted because of insufficient data.

17M GRID AND 10M MAGNETIC NORTH
INDICATION AT CENTER OF SHEET

SCALE 1:24,000
CONTOUR INTERVAL 40 FEET
DATUM IS MEAN SEA LEVEL

THIS MAP COMPILED WITH NATIONAL MAP ACCURACY STANDARDS
FOR SALE BY U. S. GEOLOGICAL SURVEY, DENVER, COLORADO 80205, OR WASHINGTON, D. C. 20542
A FOLDER SHOWING TOPOGRAPHIC MAPS AND SYMBOLS IS AVAILABLE ON REQUEST

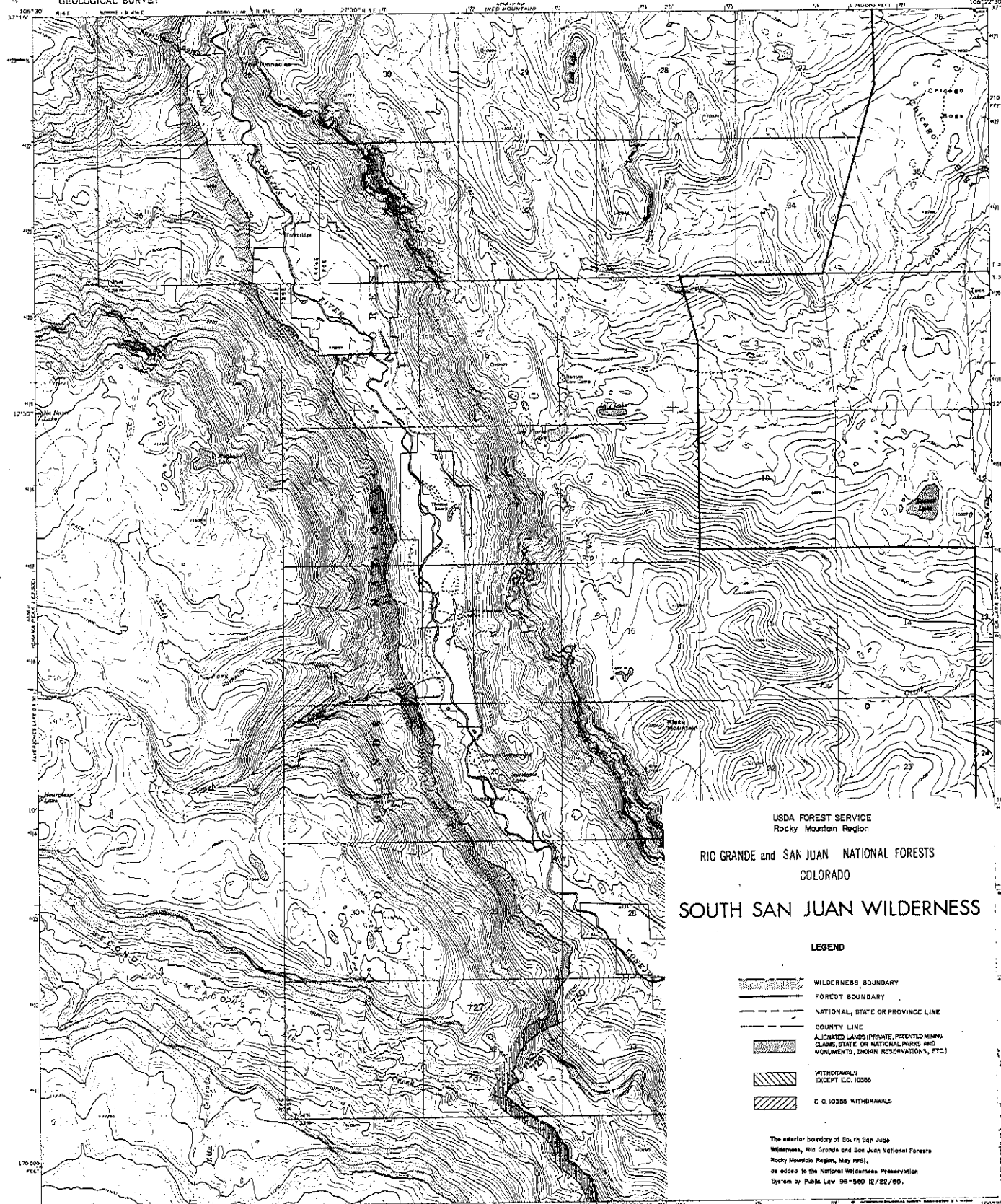
COLORADO
QUADRANGLE LOCATION

ROAD CLASSIFICATION
Light-duty Unimproved dirt

RED MOUNTAIN, COLO.
N1715-W10722 5/7.5
1967
AMS 4748 IV SW-SERIES 1877

UNITED STATES
DEPARTMENT OF THE INTERIOR
GEOLOGICAL SURVEY

SPECTACLE LAKE QUADRANGLE
COLORADO—CONJUGO CO.
7.5 MINUTE SERIES (TOPOGRAPHIC)



USDA FOREST SERVICE
Rocky Mountain Region

RIO GRANDE and SAN JUAN NATIONAL FORESTS
COLORADO

SOUTH SAN JUAN WILDERNESS

LEGEND

- WILDERNESS BOUNDARY
- FOREST BOUNDARY
- NATIONAL, STATE OR PROVINCE LINE
- COUNTY LINE
- ALIENATED LANDS (PRIVATE, PATENTED MINING CLAIMS, STATE OR NATIONAL PARKS AND MONUMENTS, INDIAN RESERVATIONS, ETC.)
- WILDERNESS (EXCEPT C.O. 10355)
- C.O. 10355 WILDERNESS

The exterior boundary of South San Juan Wilderness, Rio Grande and San Juan National Forests, Rocky Mountain Region, May 1981, as added in the National Wilderness Preservation System by Public Law 96-580 12/22/80.

ROAD CLASSIFICATION

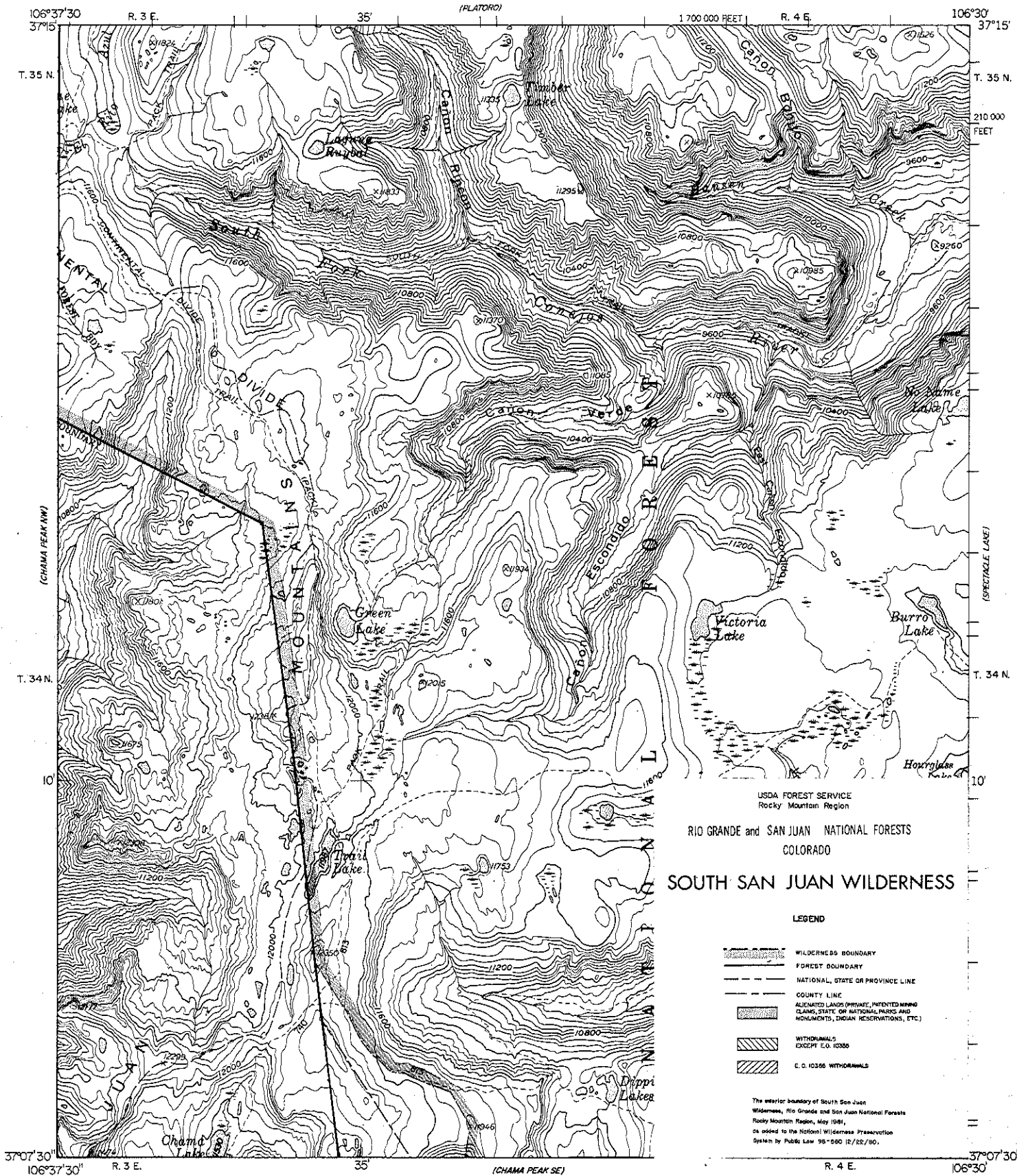
Lightly Unimproved dirt



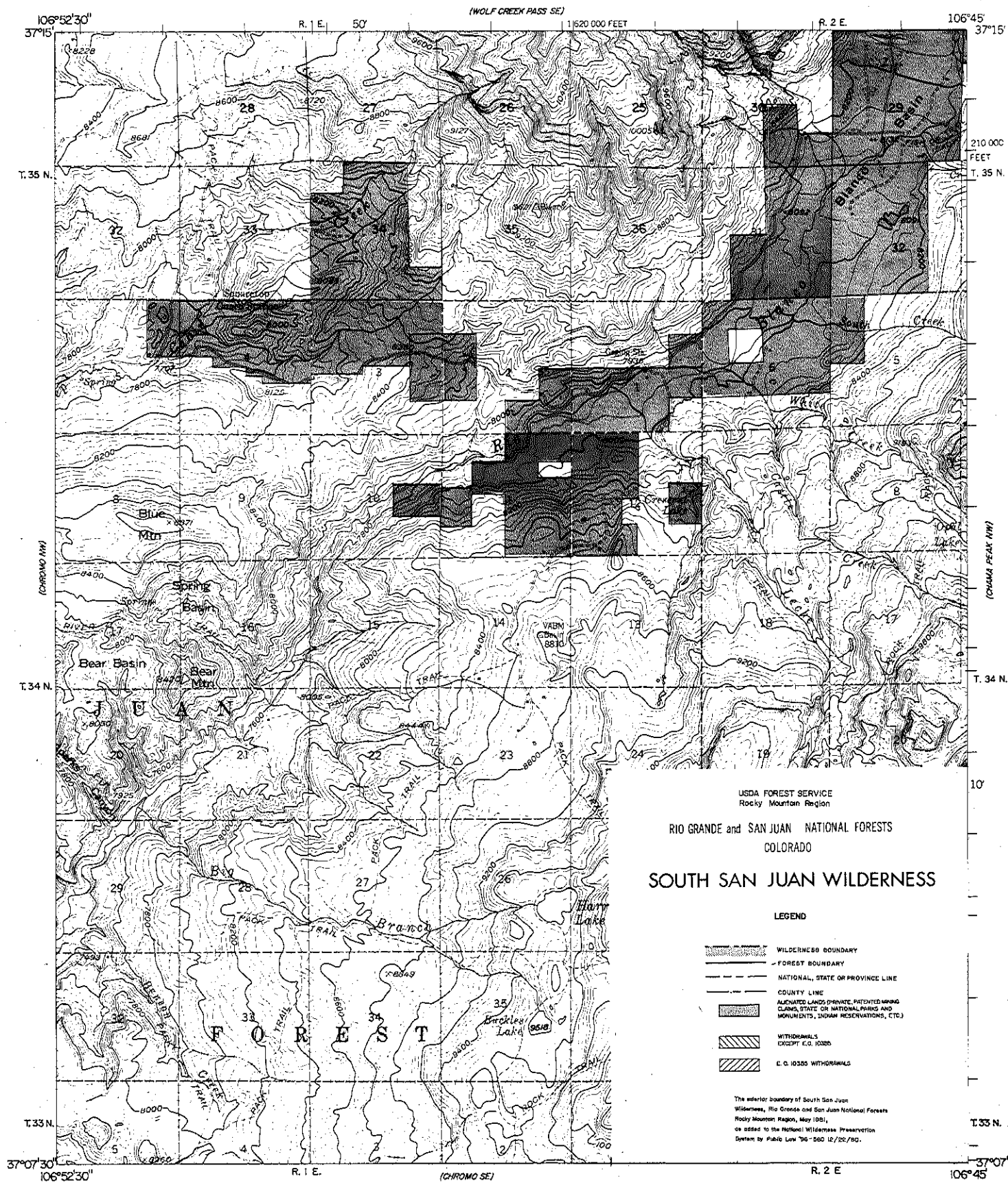
SPECTACLE LAKE, COLO.
N3707 5-W10622 5/7 5

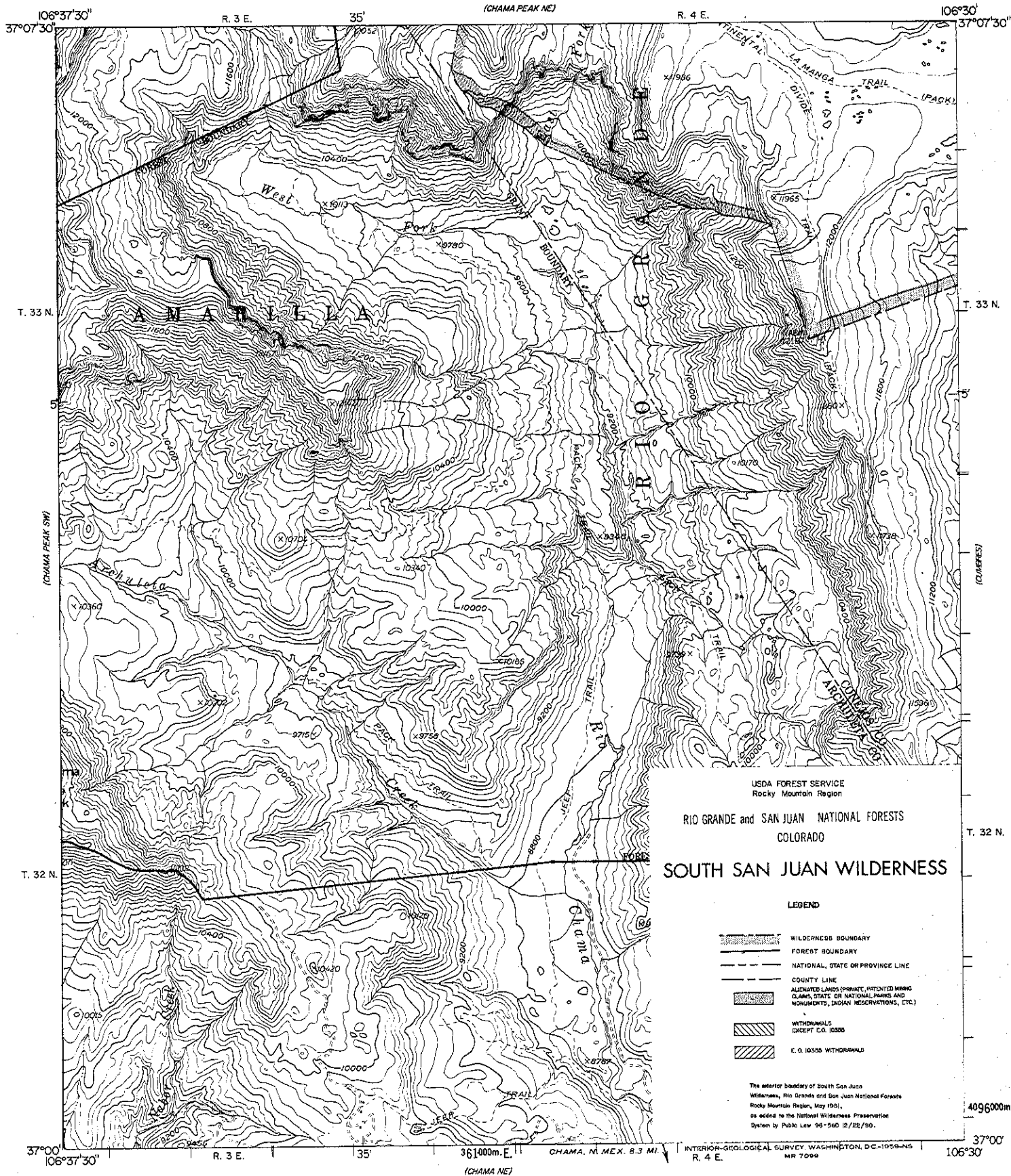
1967
AND 4794 10 14W-SERIES VMS

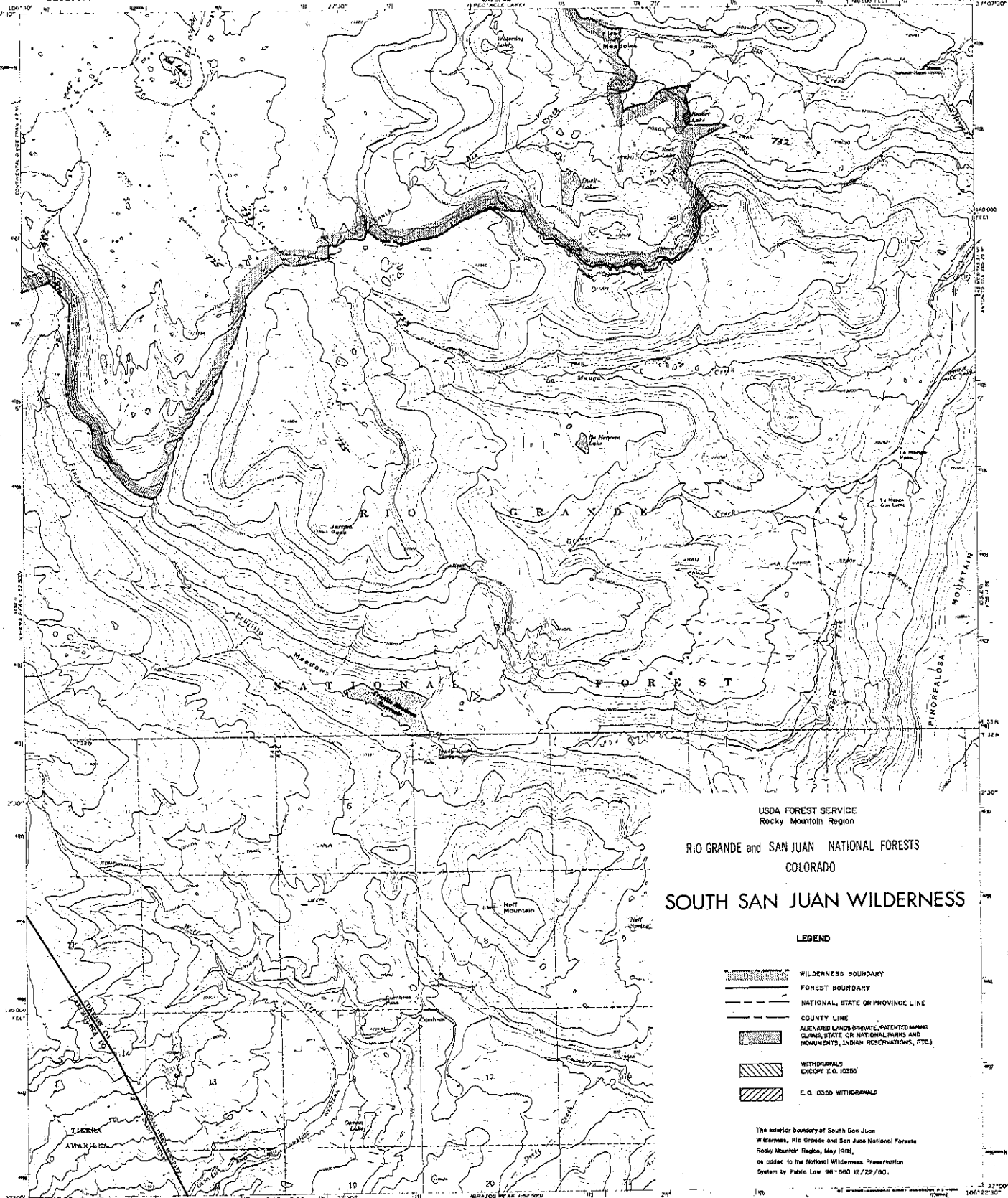
THIS MAP COMPLIES WITH NATIONAL MAP ACCURACY STANDARDS
FOR SALE BY U. S. GEOLOGICAL SURVEY, DENVER, COLORADO 80235, OR WASHINGTON, D. C. 20042
A FOLDER DESCRIBING TOPOGRAPHIC MAPS AND SYMBOLS IS AVAILABLE ON REQUEST











USDA FOREST SERVICE
Rocky Mountain Region

RIO GRANDE and SAN JUAN NATIONAL FORESTS
COLORADO

SOUTH SAN JUAN WILDERNESS

LEGEND

- WILDERNESS BOUNDARY
- FOREST BOUNDARY
- NATIONAL, STATE OR PROVINCE LINE
- COUNTY LINE
- ALIENATED LANDS (PRIVATE, PATENTED MINING CLAIMS, STATE OR NATIONAL PARKS AND MONUMENTS, INDIAN RESERVATIONS, ETC.)
- WITHDRAWALS EXCEPT E.O. 10336
- E.O. 10336 WITHDRAWALS

The exterior boundary of South San Juan Wilderness, Rio Grande and San Juan National Forests, Rocky Mountain Region, May 1981, as added to the National Wilderness Preservation System by Public Law 96-580 10/29/80.

ROAD CLASSIFICATION
Medium-duty Light-duty
Unimproved dirt
Scale Road



CUMBRES, COLO.
1:62,500—W16257 1/2 7.5
1967
AMS 478 II SW—E8285 V87

NOTE

This map was prepared for the purpose of showing the location of the wilderness area and is not to be used for any other purpose. It is not a legal document and should not be used for any legal purpose. It is not a legal document and should not be used for any legal purpose.

THIS MAP COMPLETES THE NATIONAL MAP ACTUATION STANDARDS
FOR SALE BY U.S. GEOLOGICAL SURVEY, DENVER, COLORADO 80225, OR WASHINGTON, D.C. 20542
A FOLDER DESCRIBING TOPOGRAPHIC MAPS AND SYMBOLS IS AVAILABLE ON REQUEST