

U.S. DEPARTMENT OF AGRICULTURE
FOREST SERVICE
EDWARD P. CLIFF, CHIEF
**GATES OF THE MOUNTAINS
WILDERNESS**
HELENA NATIONAL FOREST
MONTANA
PRINCIPAL MERIDIAN, MONTANA
1968
Scale
1 1/2 0 1 2 3 4 Miles

- LEGEND
- National Forest Boundary
 - County Line
 - Wilderness or Primitive Type Area Boundary
 - U. S. Highway
 - State Highway
 - Forest Route
 - Paved Road
 - All Weather Road
 - Dirt Road
 - Primitive Road
 - Trail
 - Railroad
 - Power Transmission Line
 - Ranger Station
 - Forest Service Station
 - Mine, Quarry or Gravel Pit
 - Recreation Site, Forest Service
 - Recreation Site other than Forest Service
 - Horizontal Control Station
 - Permanent Lookout Station
 - Located or Landmark Object
 - U. S. Mineral or Location Monument
 - House, Cabin or Other Building
 - Schoolhouse
 - Church
 - Wilderness
 - X CONTINUOUS WATER SUPPLY

R3W

R2W

R1W

T14N

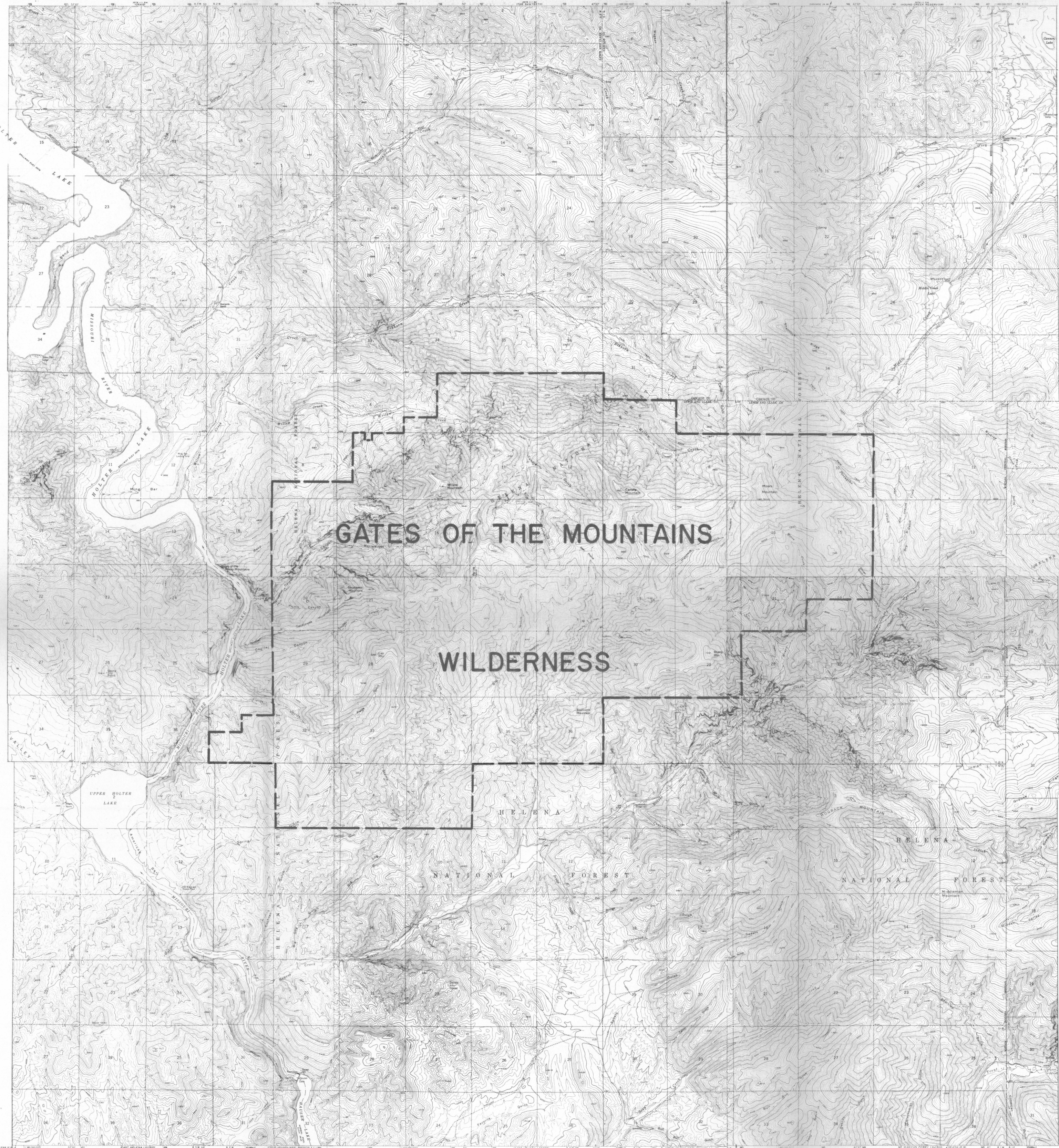
T14N

T13N

T13N

T12N

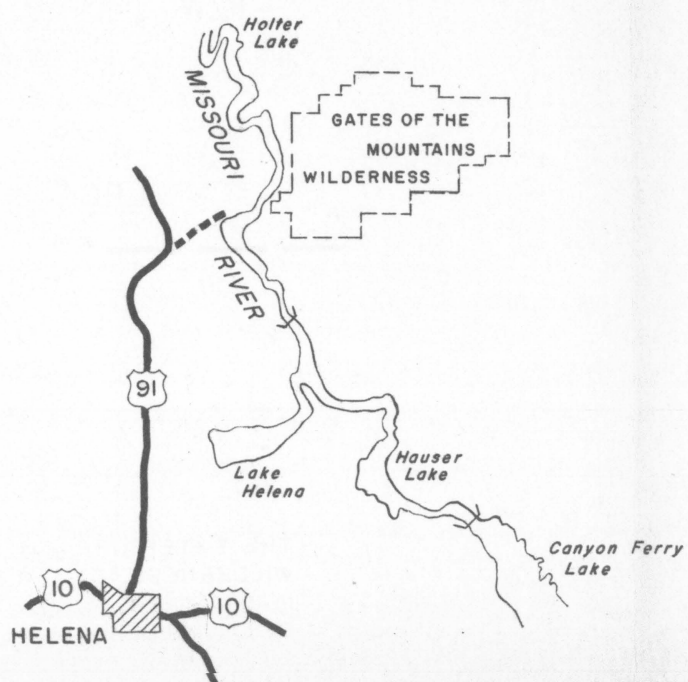
T12N



R3W

R2W

R1W



VICINITY MAP

LEGEND

— WILDERNESS BOUNDARY

THE EXTERIOR BOUNDARY OF THE GATES OF THE MOUNTAINS WILDERNESS, HELENA NATIONAL FOREST, NORTHERN REGION, JULY 1, 1965, AS REPORTED TO CONGRESS PURSUANT TO SECTION 3 (a) (1) OF THE WILDERNESS ACT, (PUBLIC LAW 88-577).

GATES OF THE MOUNTAINS
WILDERNESS