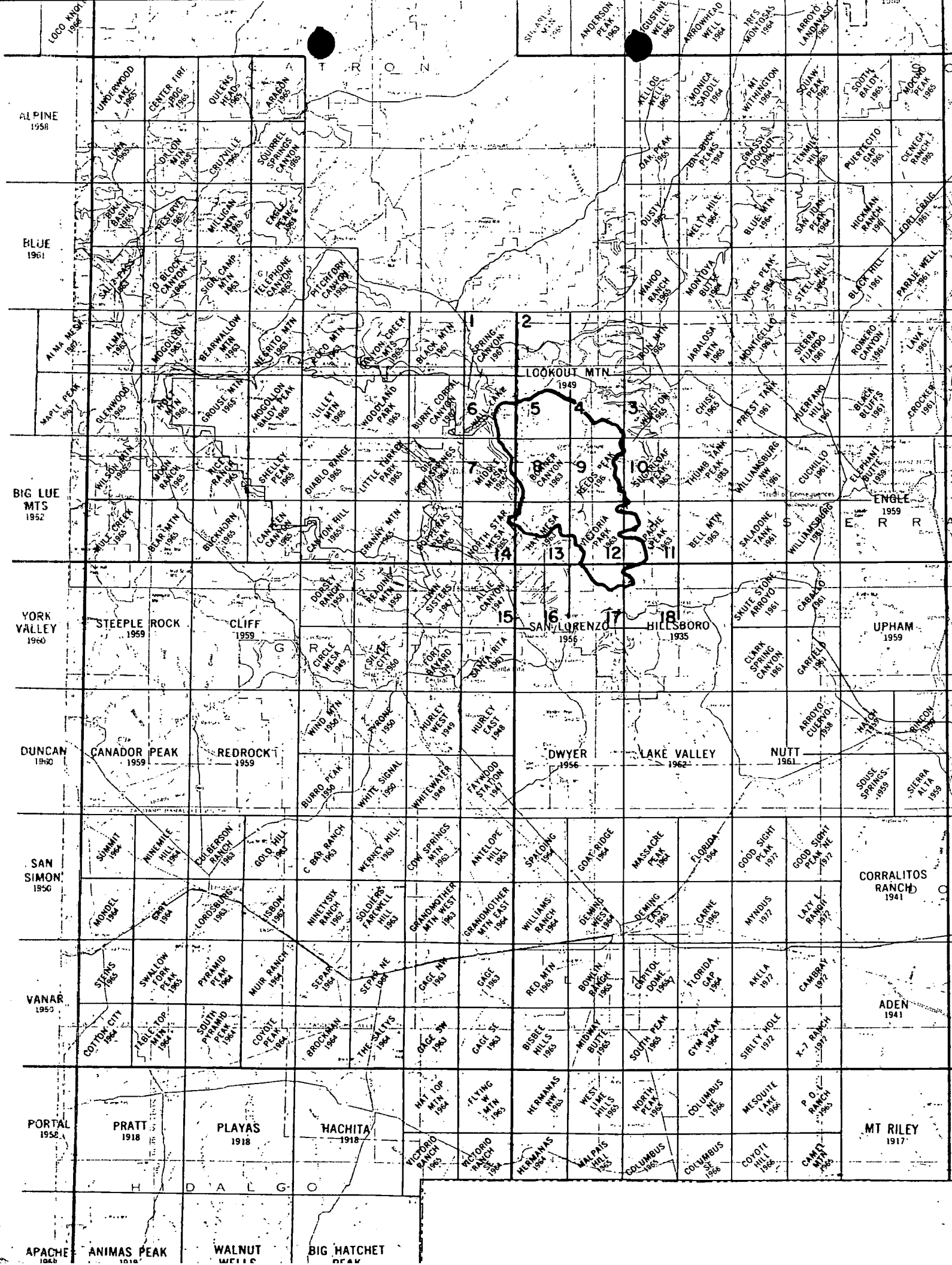




ALDO LEOPOLD WILDERNESS MAP

One inch equals one mile reduction of the map
referenced in Sec. 102(a)(3) of P.L. 96-550.







A3162 BLACK RANGE CONTINUATION
P3168 BLACK & ALDO

UNITED STATES
DEPARTMENT OF THE INTERIOR
GEOLOGICAL SURVEY

WALL LAKE QUADRANGLE
NEW MEXICO-CATRON CO.
7.5 MINUTE SERIES (TOPOGRAPHIC)



Maped, revised, and published by the Geological Survey
Open to 1955 and 1956
Revised to show changes in land use and
topography since 1955. Two classes 1957
Revised to show 1957 land use and topography
1957-1958. 1957-1958. 1957-1958. 1957-1958.
1957-1958. 1957-1958. 1957-1958. 1957-1958.
1957-1958. 1957-1958. 1957-1958. 1957-1958.

SCALE 1:25,000
CONTOUR INTERVAL 40 FEET
BASED ON MEAN SEA LEVEL

ROAD CLASSIFICATION
Lighting

Map 6/18

WALL LAKE, N. MEX.

1957-1958

1957

THIS MAP COMPLETES THE NATIONAL MAP SERIES
FOR SALE BY U.S. GEOLOGICAL SURVEY, DENVER, COLORADO 80202 OR WASHINGTON, D.C. 20509
A FULLER DESCRIPTION OF THE MAPS AND SERIES IS AVAILABLE BY REQUEST

U.S. GEOLOGICAL SURVEY
DENVER, COLORADO 80202

P1

A3122: BLACK RANGE CONTINUATION
P3168: BLACK & ALDO

UNITED STATES
DEPARTMENT OF THE INTERIOR
GEOLOGICAL SURVEY

MIDDLE MESA QUADRANGLE
NEW MEXICO
7.5-MINUTE SERIES (TOPOGRAPHIC)



Map published and published by the Geological Survey
Surveyed by USGS and USNPS
Topography by photogrammetry, contour lines water
permeable 1955-1956. First published 1956.
Control points - 1925 North American datum
1:25,000 and 1:50,000 in New Mexico coordinate system.
4000 feet
1955-1956 General Traverse Map for 1954
Scale 1:25,000 of Map
Land area and water area of mountain data.

Low and high water levels of water
containing water in 1954

Scale 1:25,000
CONTOUR INTERVAL 40 FEET
Elevation in feet (Sea Level)



ROAD CLASSIFICATION
Light duty
Heavy duty

Map 718

MIDDLE MESA, N. MEX.
1:25,000 - 1:50,000

1954

445 400 1:25,000 1954

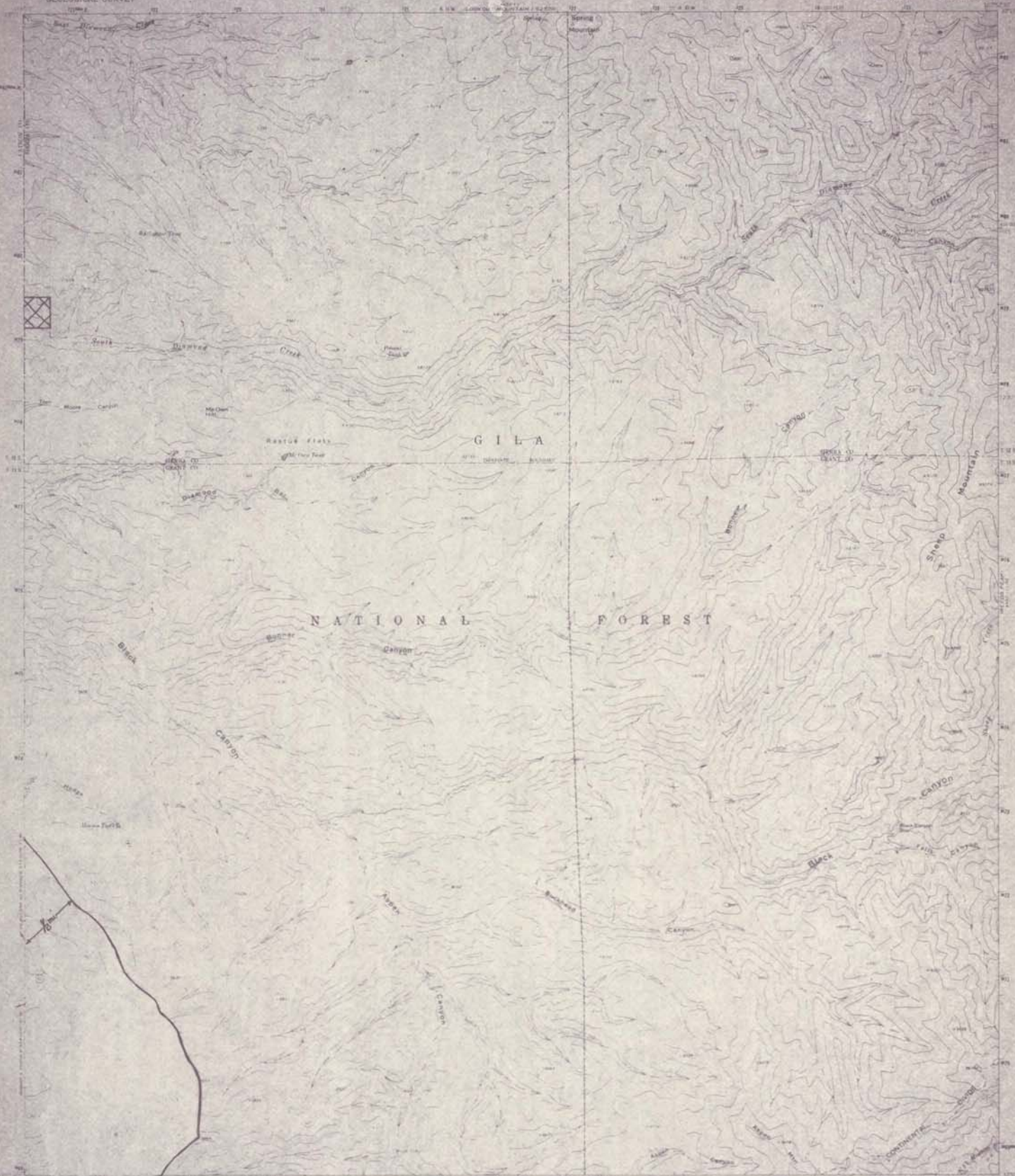
36478

7 Copies

A3162: BLACK RANGE CONTINUATION
P3168: BLACK & ALDO

UNITED STATES
DEPARTMENT OF THE INTERIOR
GEOLOGICAL SURVEY

BONNER CANYON QUADRANGLE
NEW MEXICO
7.5 MINUTE SERIES (TOPOGRAPHIC)



Maped, edited, and published by the Geological Survey

Scale 1:62,500

Projection: UTM Zone 13N, Datum: NAD 83

Editor: [illegible]

Check: [illegible]

Copyright: [illegible]

Other: [illegible]

Notes: [illegible]



CONTINUED FROM P. 3168

THIS MAP COMPLETES THE NATIONAL MAP ACCURACY STANDARDS
FOR SALE BY G & GEOLOGICAL SURVEY, DENVER, COLORADO 80225 OR WASHINGTON, D.C. 20245
A FOLDER DESCRIBING TOPOGRAPHIC MAPS AND SYMBOLS IS AVAILABLE ON REQUEST



ROAD CLASSIFICATION

Light duty

State Road

Map 8/18

BONNER CANYON N. MEX.

Scale 1:62,500

1963

GPO: 1963 O-587-880-000

365 NW

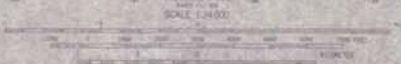
AT 62: BLACK RANGE CONTINUATION
P3168: BLACK & ALDO

UNITED STATES
DEPARTMENT OF THE INTERIOR
GEOLOGICAL SURVEY

REEDS PEAK QUADRANGLE
NEW MEXICO
15 MINUTE SERIES (TOPOGRAPHIC)



Revised, edited, and published by the Geological Survey
Copyright © 1962, U.S. Geological Survey
This map is a reproduction of the original map
published in 1962, 7 1/2 inch (1:62,500) scale
Physical features, 1:62,500 scale, are shown
in 1:250,000 scale. The map is a reproduction of the
original map, published by the Geological Survey
in 1962, 7 1/2 inch (1:62,500) scale.



CONTOUR INTERVAL, 40 FEET
ELEVATION IN FEET

THIS MAP COMPLETES THE NATIONAL MAP ACCURACY STANDARDS
FOR SALE BY U.S. GEOLOGICAL SURVEY, DENVER, COLORADO 80215 OR WASHINGTON, D.C. 20542
A FOLDER CONTAINING TOPOGRAPHIC MAPS AND SYMBOLS IS AVAILABLE ON REQUEST.



Map 9/18

REEDS PEAK, N. MEX.
1:62,500
1962

AND 1:250,000 SCALE MAPS

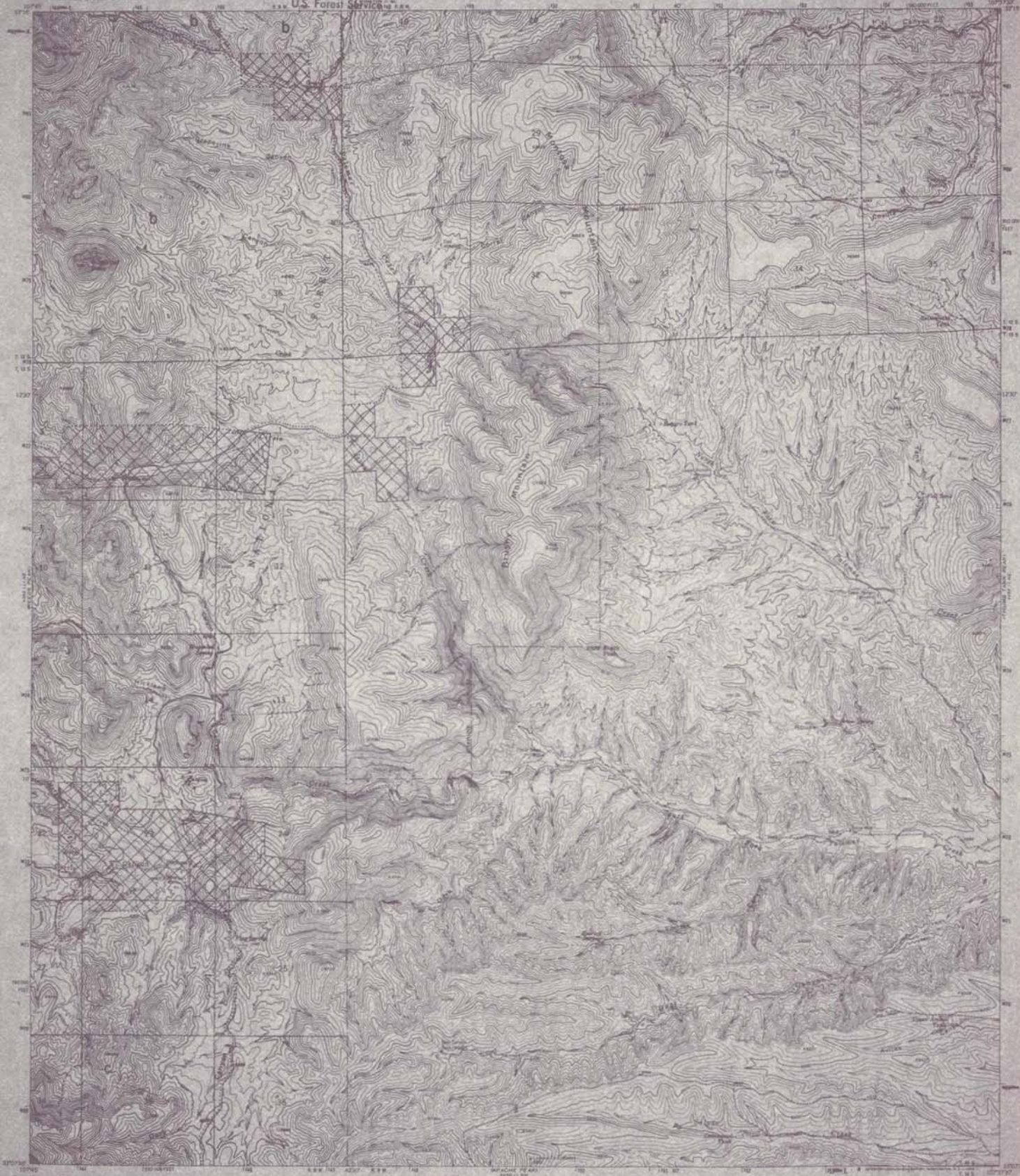
36576

Black Range NM
A 3162, P3168 11/19

DEPARTMENT OF THE INTERIOR
GEOLOGICAL SURVEY

P3168: BLACK & ALDO

SUGARLOAF PEAK QUADRANGLE
NEW MEXICO-SIBERIA CO.
7.5 MINUTE SERIES (TOPOGRAPHIC)



FOR ADMINISTRATIVE USE ONLY
Southwestern Region
U.S. Forest Service



ROAD CLASSIFICATION
Light duty
Map 10/18



Revised, edited, and published by the Geological Survey
Checked by USGS and USFS
Topographic by photogrammetry; contours from aerial
photographs taken 1962. Field checked 1962.
Reference elevation: 1927 North American datum.
1:25,000 foot grid based on the 1927 datum system, with the
3,000 meter interval. Contour interval 40 feet.
Scale 1:25,000 in feet.
Certain land areas are omitted because of insufficient data.

THIS MAP COMPLETES WITH NATIONAL MAP ACCURACY STANDARDS
FOR SALE BY U.S. GEOLOGICAL SURVEY, DENVER, COLORADO 80202, OR WASHINGTON, D.C. 20542
A PUBLISHED TOPOGRAPHIC MAP AND SYMBOLS IS AVAILABLE ON REQUEST

SUGARLOAF PEAK, N. MEX.
1962
AND ALSO IN THE SERIES 100

Black Range NM
A 3162, P 3168 12/19

UNITED STATES
DEPARTMENT OF THE INTERIOR
GEOLOGICAL SURVEY

P3168 BLACK & ALDO

APACHE PEAK QUADRANGLE
NEW MEXICO-MIERSA CO.
7.5 MINUTE SERIES (TOPOGRAPHIC)



Maped, edited, and published by the Geological Survey
Control by USGS and USFS
Topography by photogrammetric methods from aerial
photographs taken 1962. Field checked 1963
Reliance on previous 1:25,000 scale topographic sheets
10,000 foot grid based on New Mexico coordinate system, west zone
1983 mean Universal Transverse Mercator grid data
zone 13, shown in blue
Cartographic lines and symbols based on insufficient data

FOR ADMINISTRATIVE USE ONLY
Southwestern Region
U.S. Forest Service

SCALE 1:24,000
CONTOUR INTERVAL 40 FEET
DATA IS BASED ON 1983



ROAD CLASSIFICATION
Unimproved dirt
346 SW Map 11/18

APACHE PEAK, N. MEX.
1963

THIS MAP COMPLETES WITH NATIONAL MAP ACCURACY STANDARDS
FOR SALE BY U.S. GEOLOGICAL SURVEY, DENVER, COLORADO 80226, OR WASHINGTON, D.C. 20542
A FOLDER DESCRIBING TOPOGRAPHIC MAPS AND SYMBOLS IS AVAILABLE ON REQUEST

APR 4 1964 11 07 000000 1963

A7562: BLACK RANGE CONTINUATION
P3168: BLACK & ALDO

UNITED STATES
DEPARTMENT OF THE INTERIOR
GEOLOGICAL SURVEY

VICTORIA PARK QUADRANGLE
NEW MEXICO
7.5 MINUTE SERIES (TOPOGRAPHIC)



Maplet, edited and published by the Geological Survey

Compiled by C. H. L. 1952, 1953, and 1954

Topography by photogrammetry, derived from aerial

photographs taken 1952. First checked 1953.

Publication in cooperation with the National Forest

10,000-foot grid based on New Mexico coordinate system, zone 10N

3000-meter contour interval. Elevation in feet and meters.

Scale 1:50,000. Contour interval 100 feet.

Base on U.S. Census of 1950.

Where printed, land area has been established by air

and shown in accordance with the

best available data.



SCALE 1:50,000

1:50,000

1:50,000

1:50,000

1:50,000

1:50,000

1:50,000

1:50,000

1:50,000

1:50,000

1:50,000

1:50,000

1:50,000

1:50,000

1:50,000

THIS MAP COMPLETES WITH NATIONAL MAP ACCURACY STANDARDS
FOR SALE BY U.S. GEOLOGICAL SURVEY, DENVER, COLORADO 80225, OR WASHINGTON, D.C. 20542
A FOLDER INCLUDING TOPOGRAPHIC MAPS AND SYMBOLS IS AVAILABLE ON REQUEST



ROAD CLASSIFICATION

Map 12/18

VICTORIA PARK N. MEX.

1953

1953

1953

1953

1953

1953

1953

1953

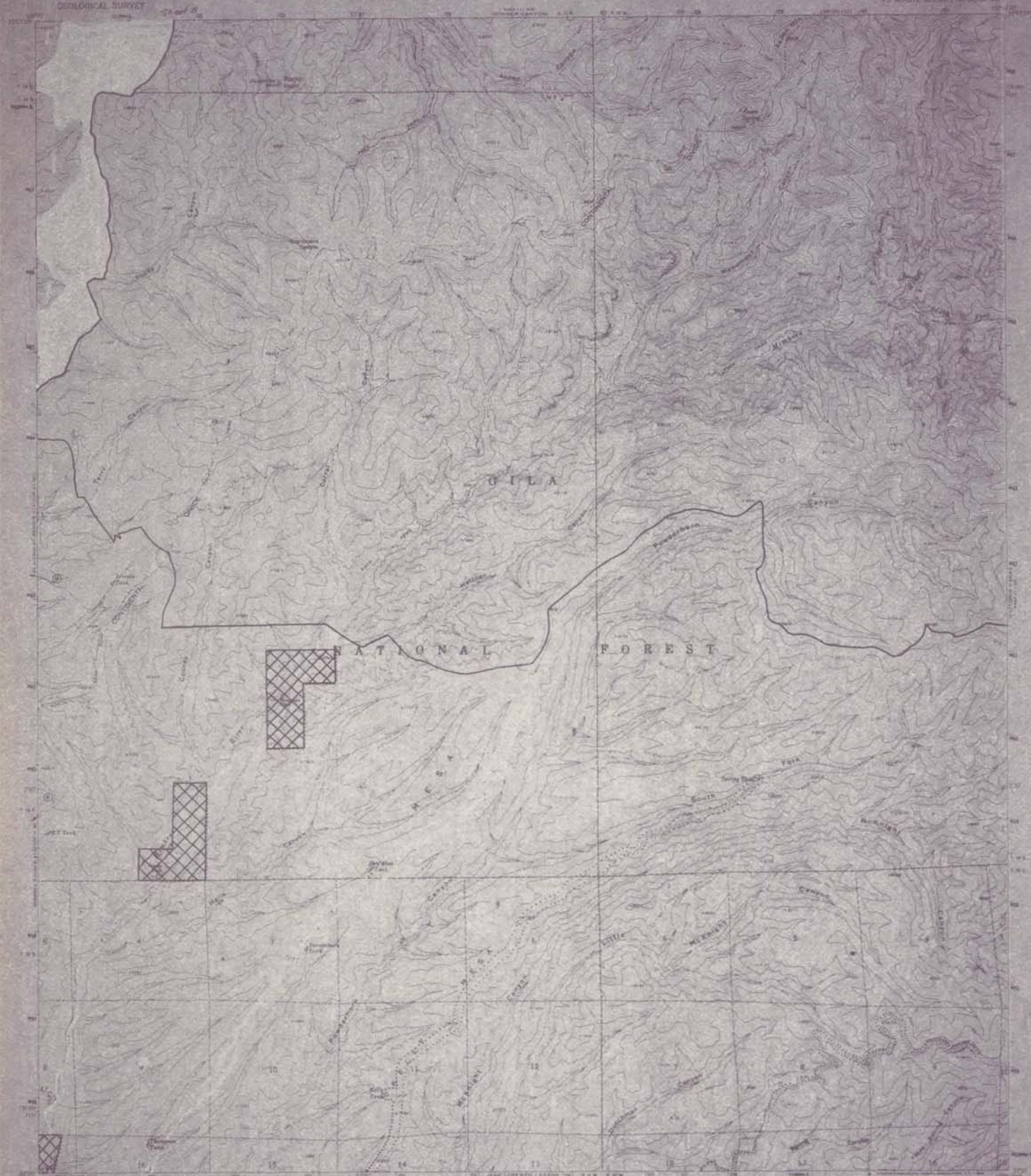
365 SE

Copyright and trademark are hereby asserted.

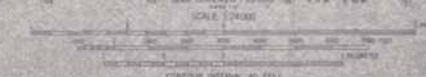
A3168: BLACK RANGE CONTINUATION
P3168: BLACK & ALDO

UNITED STATES
DEPARTMENT OF THE INTERIOR
GEOLOGICAL SURVEY

HAY MESA QUADRANGLE
MAP NO. 13-18
7.5 MINUTE BASED (TOPOGRAPHIC)



Map and, and published by the Geological Survey
Series 13-18, 13-19, 13-20, and 13-21
Topography by photostereoscopy, vertical aerial
photography, and 1967. (Published 1967)
Elevation contours: 100-foot intervals below
10,000 feet; 200-foot intervals above 10,000 feet.
Base 1:1,000 scale. Contour interval 40 feet.
Base 1:1,000 scale. Contour interval 40 feet.



CONTOUR INTERVAL 40 FEET
BASED ON MEAN SEA LEVEL
THIS MAP COMPLETES WITH NATIONAL MAP ASSOCIATION STANDARDS
FOR SALE BY U.S. GEOLOGICAL SURVEY, DENVER, COLORADO 80225 OR WASHINGTON, D.C. 20541
A PUBLISHER DESCRIBING TOPOGRAPHIC MAPS AND SYMBOLS IS AVAILABLE ON REQUEST

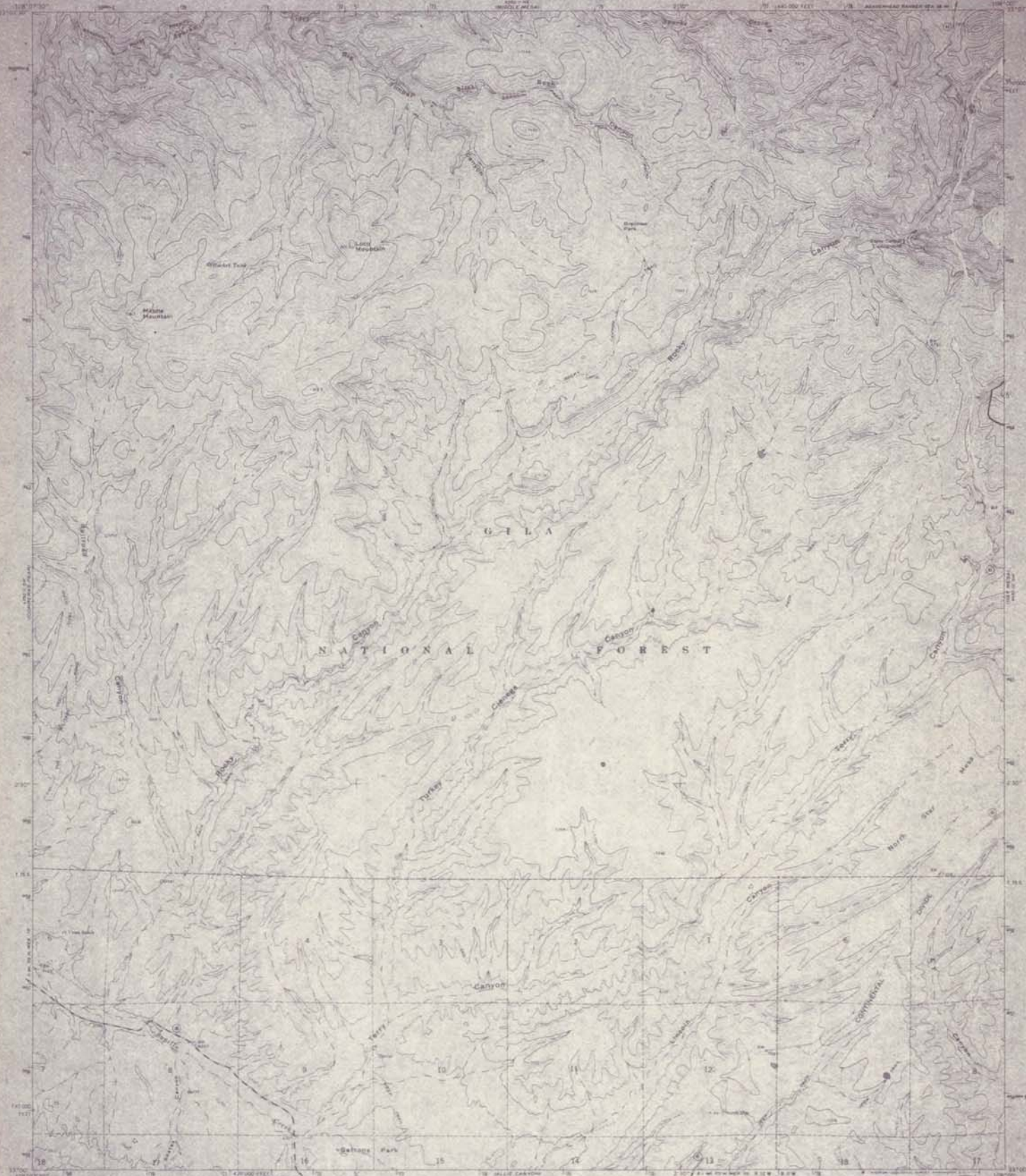


MAP CLASSIFICATION
Light duty — Unimproved road
State Route
Map 13/18
HAY MESA, N. MEX.
13-18-1
1965
U.S. GEOLOGICAL SURVEY

A3162: BLACK RANGE CONTINUATION
P3168: BLACK & ALDO

UNITED STATES
DEPARTMENT OF THE INTERIOR
GEOLOGICAL SURVEY

NORTH STAR MESA QUADRANGLE
NEW MEXICO—GRANT CO.
15 MINUTE SERIES (TOPOGRAPHIC)



Maped, edited, and published by the Geological Survey
under the 1964 and 1964
Copyright by the Geological Survey, Department of the Interior,
Washington, D.C. 20548. First printed 1964.
Revised edition, 1964. North American datum
1983. All rights reserved. This map is a reproduction of the
original map and is not to be used for any other purpose.
Where needed, land use data has been added.



CONTOUR INTERVAL 40 FEET
ELEVATION IN FEET



ROAD CLASSIFICATION
Major Road
Minor Road
Unimproved Road
State Route
Map 14/18
NORTH STAR MESA, N. MEX.
1:50,000—1964 (23)
AND 1964 (23)—REVIS (18)

THIS MAP COMPLETES WITH NATIONAL MAP ACCURACY STANDARDS
FOR SALE BY U.S. GEOLOGICAL SURVEY, DENVER, COLORADO 80225, OR WASHINGTON, D.C. 20548
A FOLDER DESCRIBING TOPOGRAPHIC MAPS AND SYMBOLS IS AVAILABLE ON REQUEST.

36456 2-6-10 74

Map 17/18
(APPROX. 1:62,500)



A3162 BLACK RANGE CONTINUATION
P3168 BLACK & ALDO

