



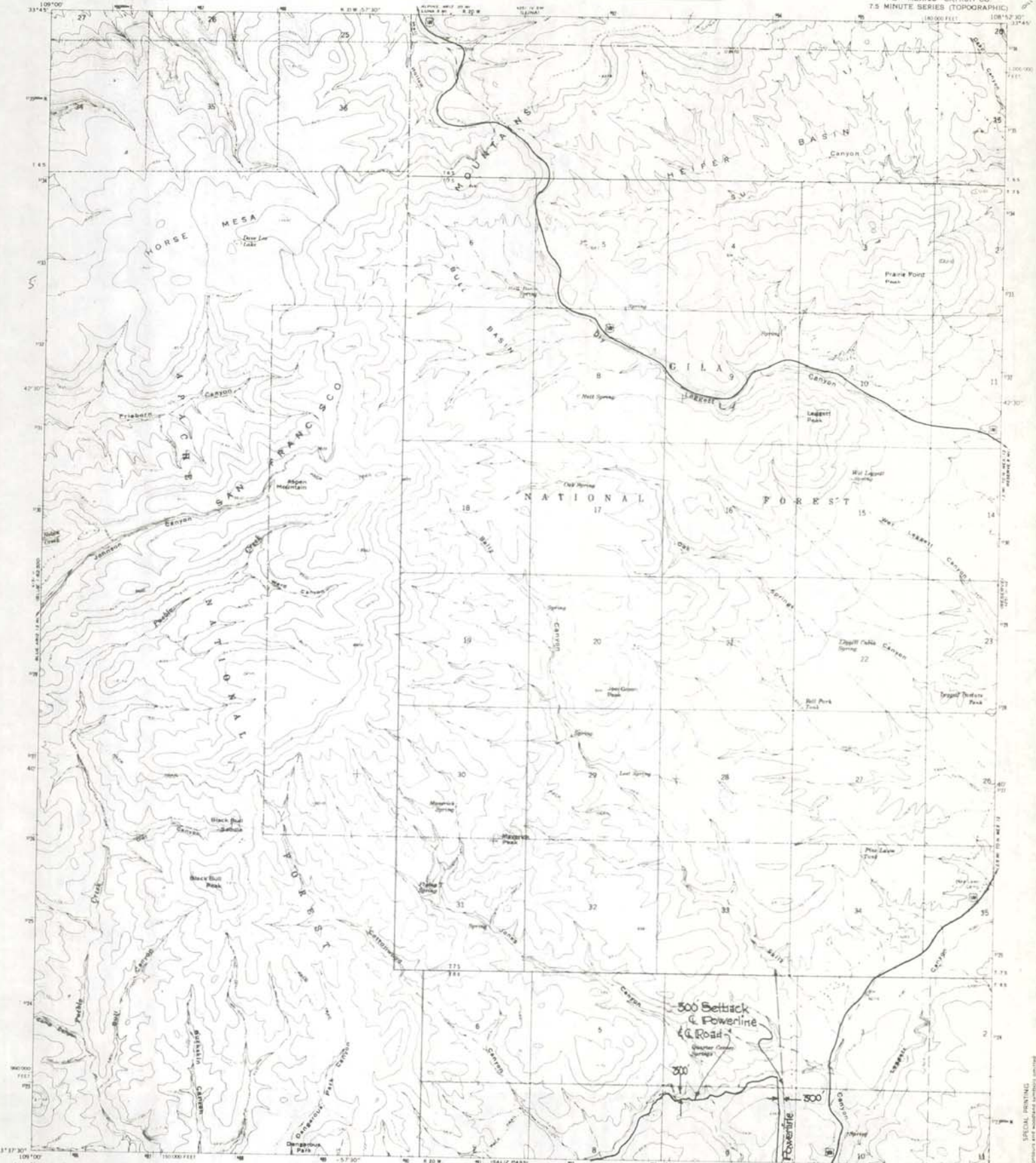
# BLUE RANGE WILDERNESS MAP

One inch equals one mile reduction  
of the map referenced in Sec. 102  
(a)(3) of P.L. 96-550.

# BLUE RANGE WILDERNESS PL 96-550 (12/19/80)

UNITED STATES  
DEPARTMENT OF THE INTERIOR  
GEOLOGICAL SURVEY

BULL BASIN QUADRANGLE  
NEW MEXICO-CATRON CO.  
7.5 MINUTE SERIES (TOPOGRAPHIC)



Mapped, edited, and published by the Geological Survey

Control by USGS and USGS

Topography by photogrammetric methods from aerial

photographs taken 1964. Field checked 1965

Photocopy projection. 1977 North American datum.

10,000-foot grid based on New Mexico coordinate system,

west zone.

1000-meter Universal Transverse Mercator grid ticks,

zone 12, shown in blue.

Where omitted, land lines have not been established

UTM GRID AND U.S. MAGNETIC NORTH

DECLINATION AT CENTER OF SHEET

SCALE 1:24,000

CONTOUR INTERVAL 40 FEET

DATUM IS MEAN SEA LEVEL

ROAD CLASSIFICATION

Heavy duty

Light duty

Unimproved dirt

U.S. Route

Map 1/5

SPECIAL PRINTING

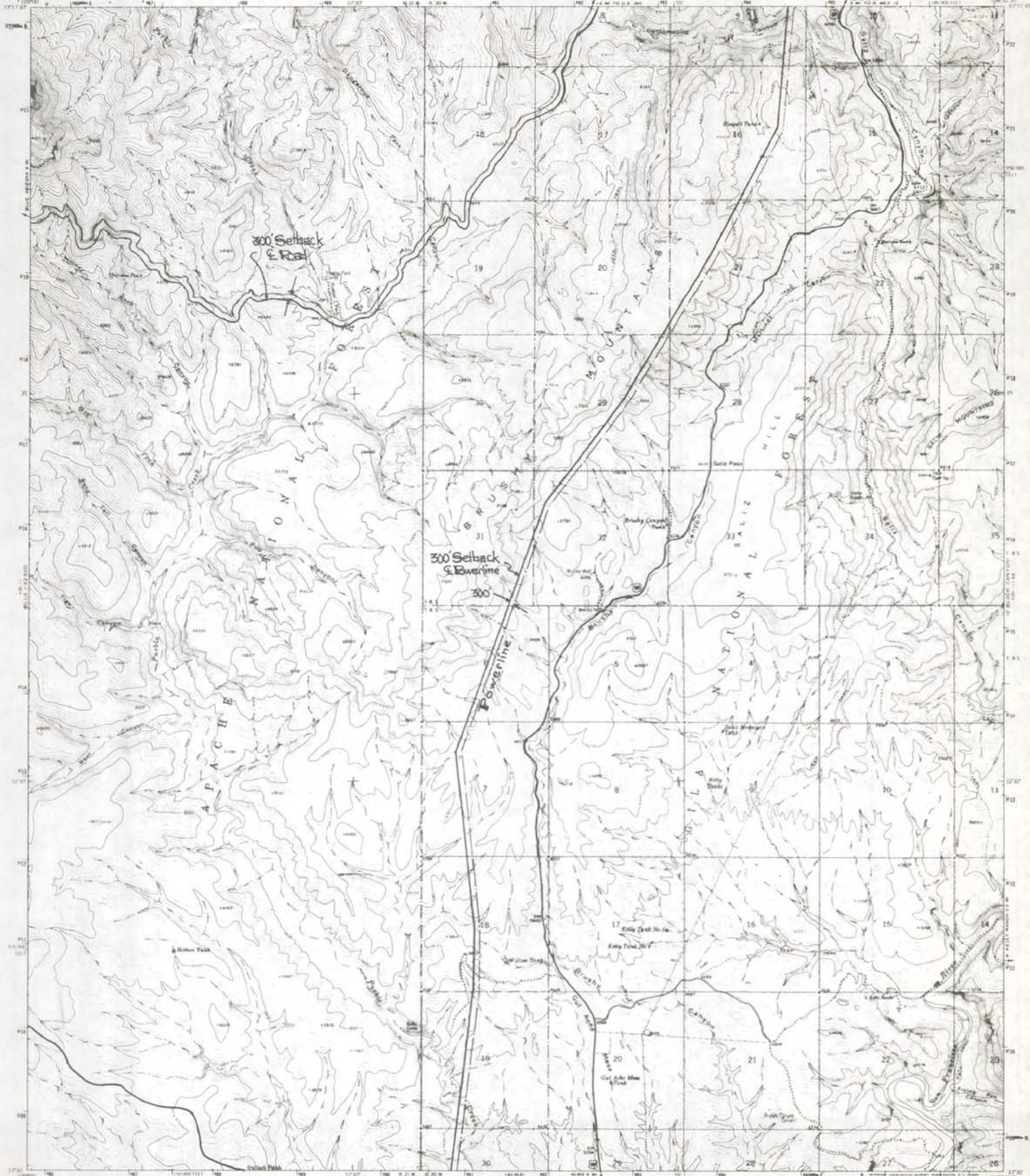
Contours and shaded symbols omitted



# BLUE RANGE WILDERNESS PL 96-550 (12/19/80)

SALIZ PASS QUADRANGLE  
NEW MEXICO-CATRON CO.  
7.5 MINUTE SERIES (TOPOGRAPHIC)

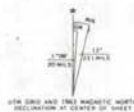
UNITED STATES  
DEPARTMENT OF THE INTERIOR  
GEOLOGICAL SURVEY



Mapped by the U.S. Forest Service.  
Edited and published by the Geological Survey.  
Control by USGS, USACGS, and USFS.

Topography by photogrammetric methods from aerial  
photographs taken 1958. Field checked by USGS 1963.  
Polyconic projection - 1927 North American datum.  
10,000 foot grid based on New Mexico coordinate system, west zone.  
1000 meter Universal Transverse Mercator grid (NAD 83).  
Zone 12, shown in blue.

Five red dashed lines indicate selected fence lines.  
Where omitted, grid lines have not been established.



ROAD CLASSIFICATION  
Heavy duty ——— Light duty ———  
Unimproved dirt ———  
U.S. Route

Map 2/5

SALIZ PASS, N. MEX.

1:25,000 (1980) 1:27.5

THIS MAP COMPLIES WITH NATIONAL MAP ACCURACY STANDARDS  
FOR SALE BY U.S. GEOLOGICAL SURVEY, DENVER, COLORADO 80225, OR WASHINGTON, D.C. 20042



# BLUE RANGE WILDERNESS PL 96-550 (12/19/80)

MUTR1000 & SE., ARIZ.-N.MEX.

UNITED STATES  
DEPARTMENT OF THE INTERIOR  
GEOLOGICAL SURVEY



Map by the U. S. Forest Service  
This is an unedited copy of an original  
manuscript including field additions  
made by the Geological Survey in 1961

APPROXIMATE MEAN  
DECLINATION 1961

SCALE 1:24000  
1 2 3 4 5 6 7 8 9 10  
1000 0 1000 2000 3000 4000 5000 6000 7000 FEET  
CONTOUR INTERVAL 20 FEET  
DATUM IS MEAN SEA LEVEL

Map 3/5

MUTR1000 & SE., ARIZ.-N.MEX.

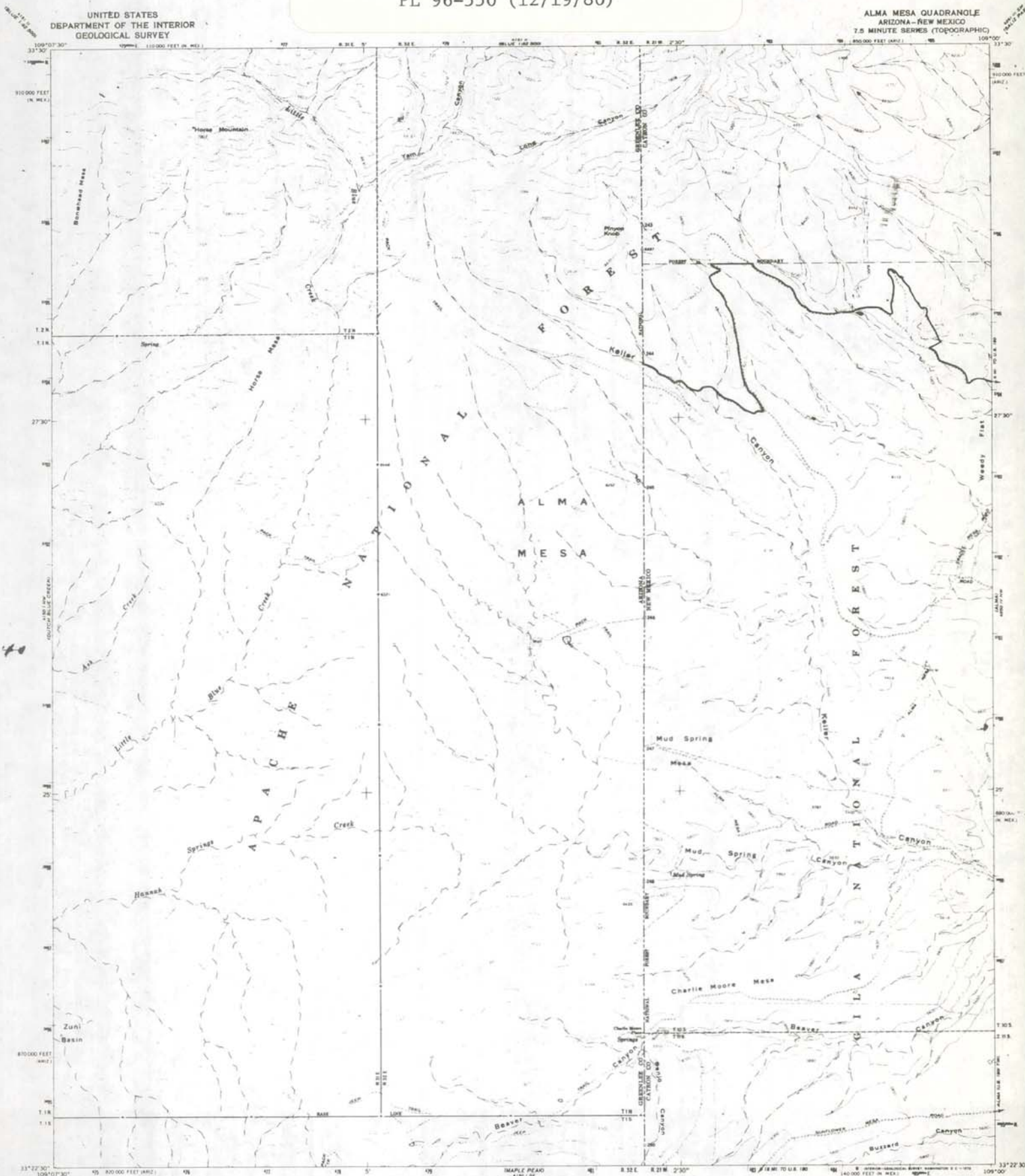
Revised & Project



# BLUE RANGE WILDERNESS PL 96-550 (12/19/80)

UNITED STATES  
DEPARTMENT OF THE INTERIOR  
GEOLOGICAL SURVEY

ALMA MESA QUADRANGLE  
ARIZONA-NEW MEXICO  
7.5 MINUTE SERIES (TOPOGRAPHIC)



Mappeo, edited, and published by the Geological Survey  
Conter by USGS and USGAS

Topography by photogrammetric methods from aerial  
photographs taken 1966. Field checked 1967

Polynomial projection. 1927 North American datum.  
10,000-foot grid based on Arizona coordinate system, east zone  
and New Mexico coordinate system, west zone

1000-meter Universal Transverse Mercator grid (UTM),  
zone 12, shown on this

Flow red dashed lines indicate selected fence lines.  
Where omitted, land lines have not been established

MAPLE PEAK  
SCALE 1:24,000

CONTOUR INTERVAL 40 FEET  
DATUM IS MEAN SEA LEVEL

UTM GRID AND 1983 MAGNETIC NORTH  
DECLINATION AT CENTER OF SHEET

THIS MAP COMPLEYS WITH NATIONAL MAP ACCURACY STANDARDS



ROAD CLASSIFICATION  
Unimproved dirt

Map 4/5

ALMA MESA, ARIZ.-N. MEX.

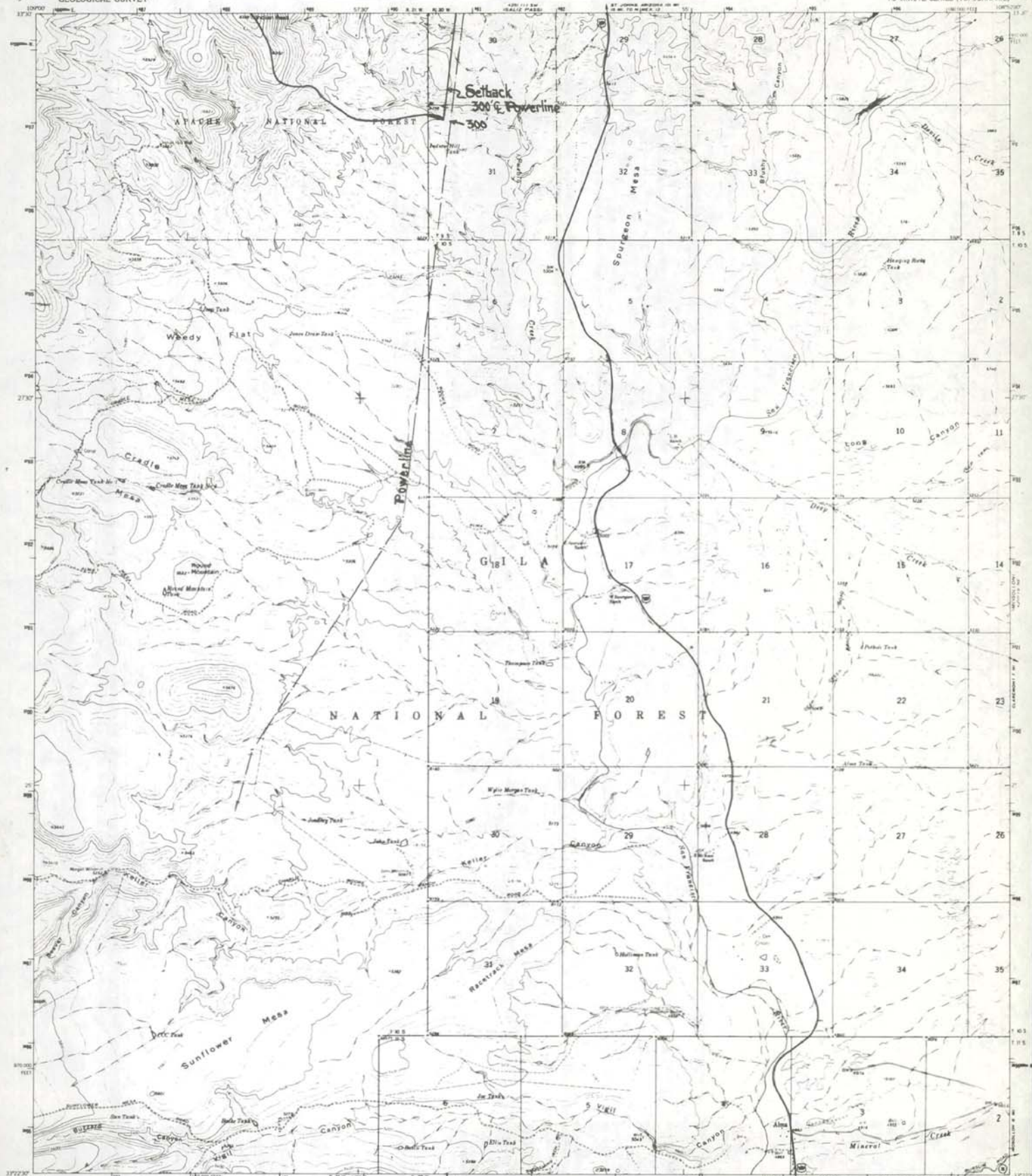
N3322.5-W10900.7.5



# BLUE RANGE WILDERNESS PL 96-550 (12/19/80)

UNITED STATES  
DEPARTMENT OF THE INTERIOR  
GEOLOGICAL SURVEY

ALMA QUADRANGLE  
NEW MEXICO-CATRON CO  
75 MINUTE SERIES (TOPOGRAPHIC)



Mapped by the U.S. Forest Service  
Edited and published by the Geological Survey

Control is U.S.G.S. 1958 and 1959

Topography by photogrammetric methods from aerial  
photographs taken 1958. Field checked 1963

Projection: 1927 North American datum  
10,000 foot grid based on New Mexico coordinate system, west zone

1000 meter Universal Transverse Mercator grid lines  
zone 12, shown in blue

Five red dashed lines indicate selected fence lines

Where unimproved, land lines have not been established



CONTOUR INTERVAL: 40 FEET  
BATHY: 10 FEET SEA LEVEL



ROAD CLASSIFICATION

Heavy duty Light duty

Unimproved dirt

U.S. Route State Route

Map 5/5

ALMA, N. MEX.

N3322 S. - W10852 S. 1/7 S

FOR SALE BY U.S. GEOLOGICAL SURVEY, DENVER 25, COLORADO OR WASHINGTON 25, D. C.