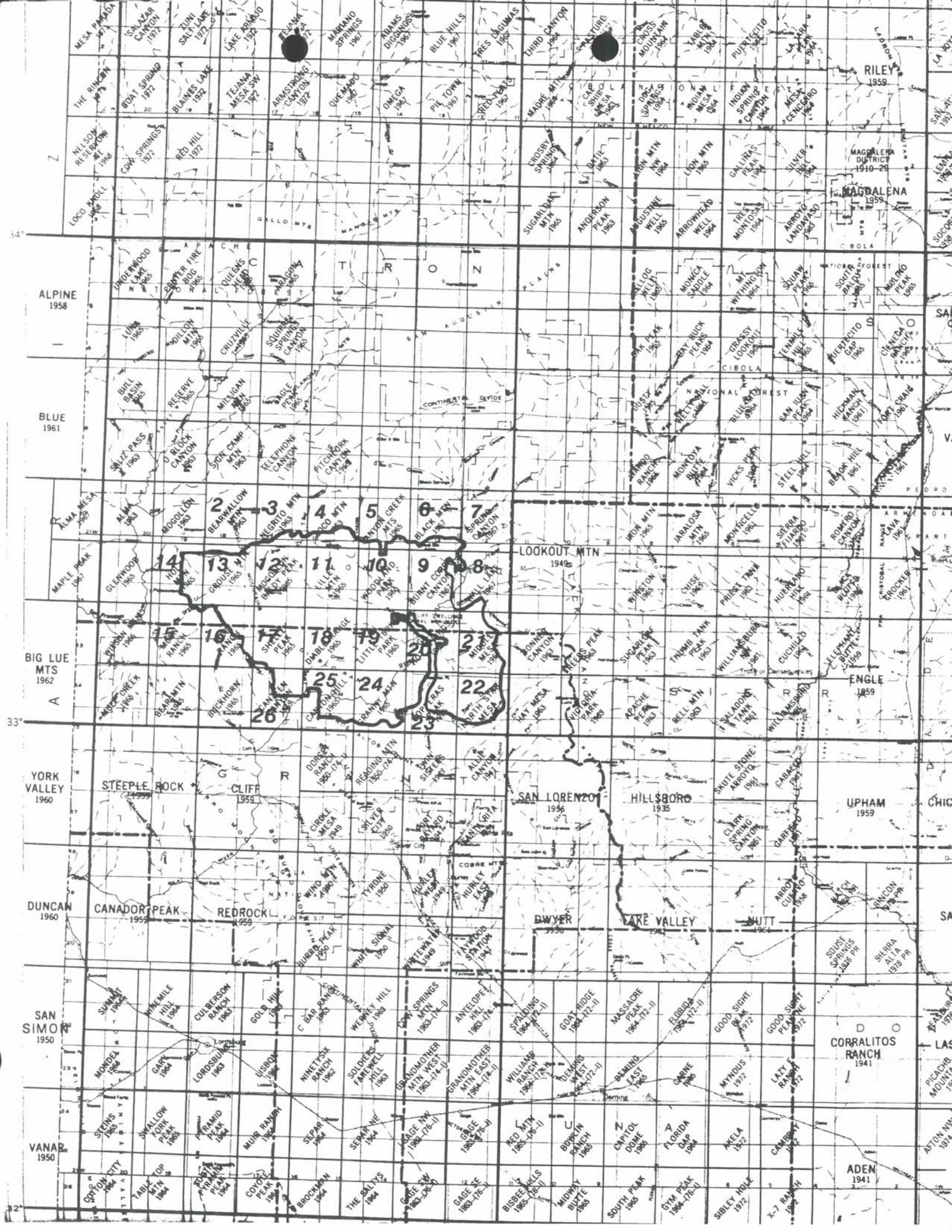




# GILA WILDERNESS MAP

One inch equals one mile reduction of the map  
referenced in Sec. 102(a)(3) of P.L. 96-550.

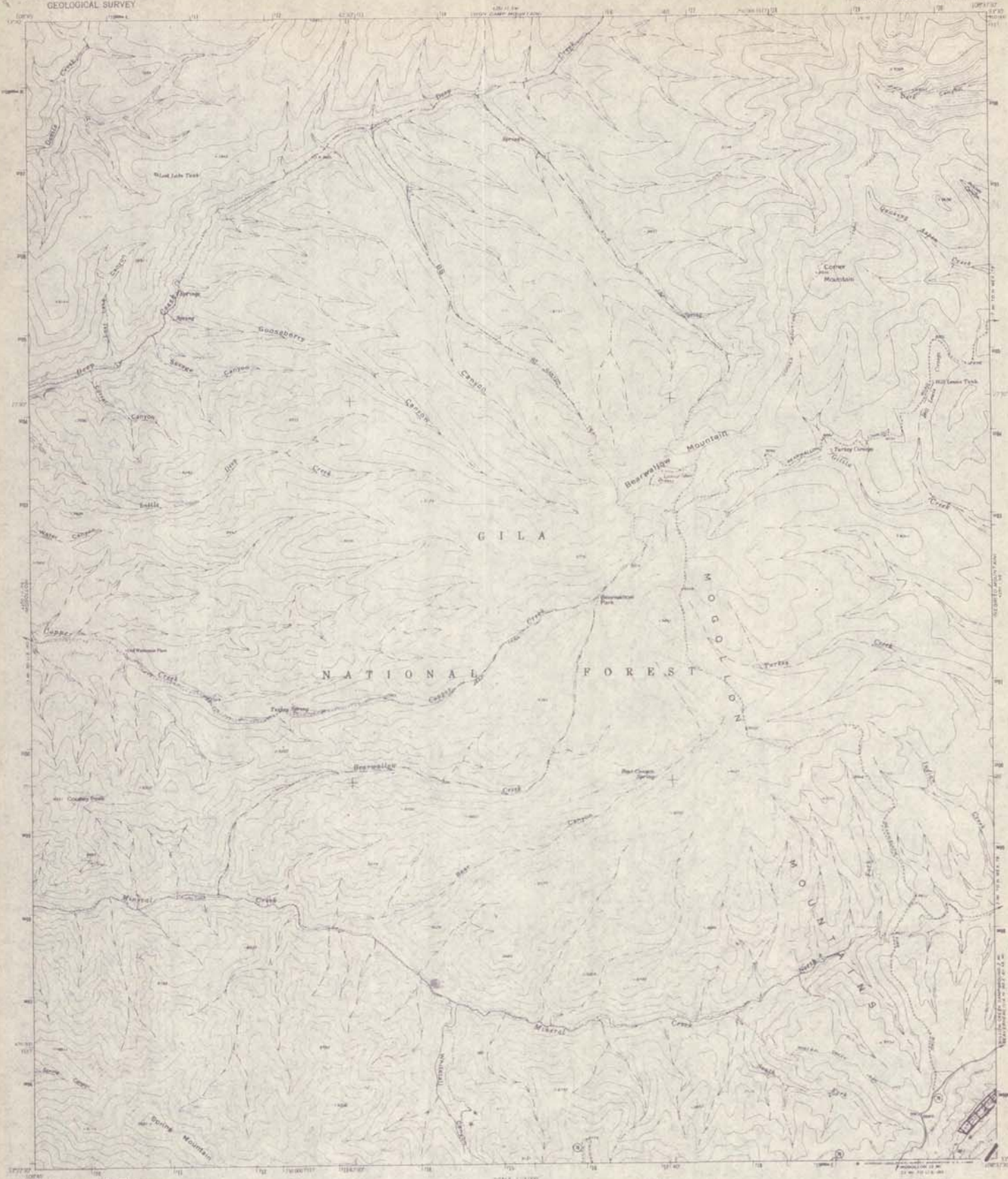




# GILA WILDERNESS

UNITED STATES  
DEPARTMENT OF THE INTERIOR  
GEOLOGICAL SURVEY

BEARWALLOW MOUNTAIN QUADRANGLE  
NEW MEXICO-CATRON CO.  
7.5 MINUTE SERIES (TOPOGRAPHIC)



Mapped by the U.S. Forest Service  
Edited and published by the Geological Survey  
Control by 1955-1956-1957-1958  
Topographic features shown are from aerial  
photographs taken 1958. Grid based on 1955-1957  
Published information: 1957 North American Datum  
10,000 foot grid based on New Mexico map datum, and  
1000 meter Universal Transverse Mercator grid 1958  
Scale 1:50,000  
Where control lines have not been established or are  
not shown because of insufficient data



ROAD CLASSIFICATION  
Light duty Unimproved dirt  
State Road  
Map 2

BEARWALLOW MOUNTAIN, N. MEX.  
1963  
AMS 420 / NW SERIES VNM

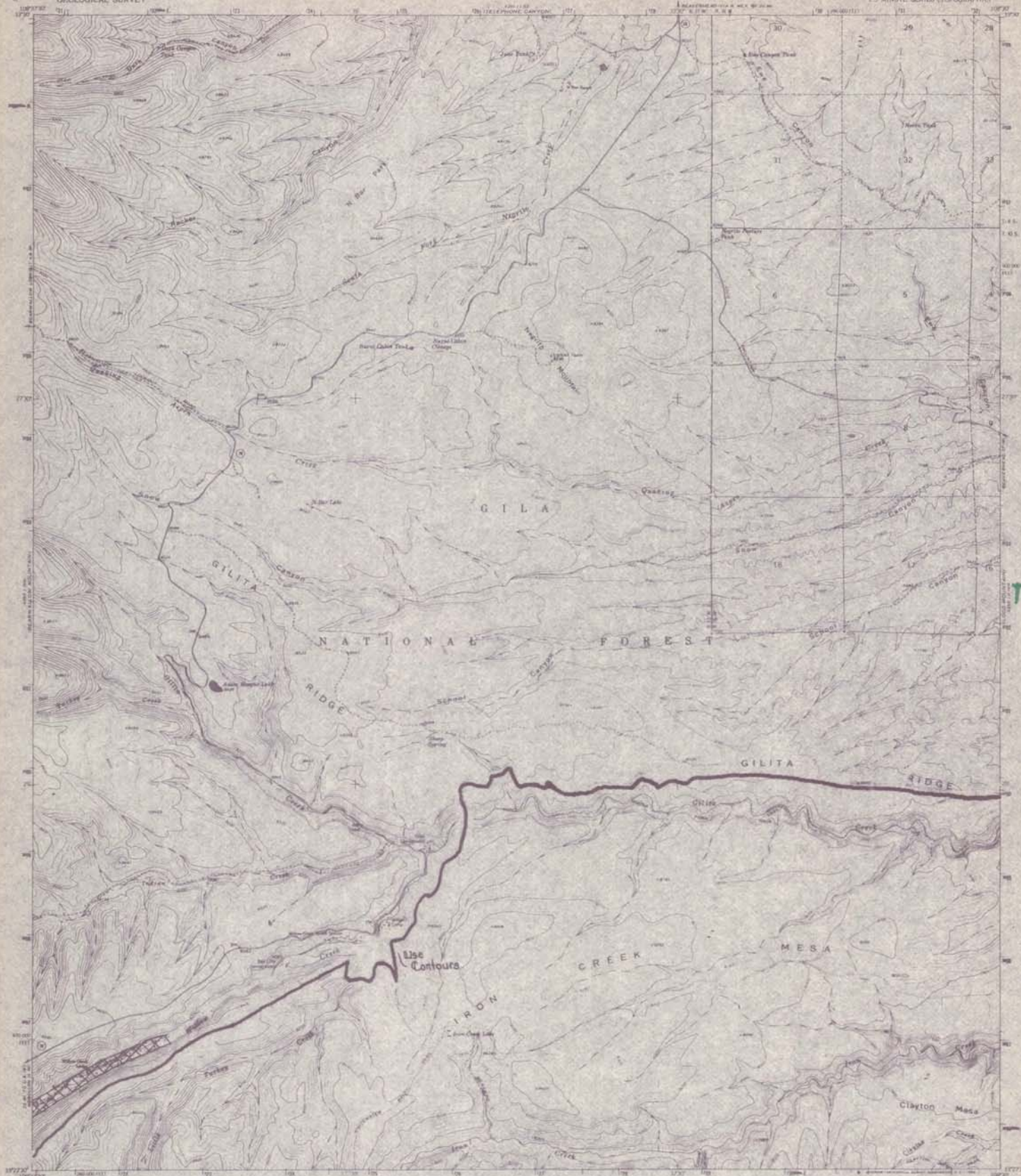
FOR SALE BY U.S. GEOLOGICAL SURVEY, DENVER 25, COLORADO OR WASHINGTON 25, D.C.  
A folder containing topographic maps and drawings is available on request



# GILA WILDERNESS

UNITED STATES  
DEPARTMENT OF THE INTERIOR  
GEOLOGICAL SURVEY

NEGRITO MOUNTAIN QUADRANGLE  
NEW MEXICO-CATRON CO.  
25 MINUTE SERIES (STEREOPHOTO)



T.105.

Maped by the U.S. Forest Service  
Edited and published by the Geological Survey  
Control by 1900, 1905, and 1915

Topography by photogrammetric methods from aerial  
photographs taken 1908. Data provided by 1905-1915  
Photogrammetric 1922 North American datum  
10,000-foot grid based on New Mexico coordinate system, north arrow  
1000-foot Universal Transverse Mercator grid ticks  
Scale 1:10,000 in feet  
Where contour, road, bridge, spot, and other information is not  
shown because of insufficient data

R.17W.



UTM GRID AND UTM COORDINATE SYSTEM  
FOR THE CONTOUR MAP



FOR SALE BY U.S. GEOLOGICAL SURVEY, OFFICE 25, COLORADO OR WASHINGTON 25, D.C.  
A FOLDER INCLUDING PHOTOGRAPH, MAP AND THERMIST IS AVAILABLE ON REQUEST

R.16W.



UTM GRID AND UTM COORDINATE SYSTEM  
FOR THE CONTOUR MAP

Map 3  
NEGRITO MOUNTAIN, N. MEX.  
1905

ANALYST 102, SERIES 1000



LOGO MOUNTAIN QUADRANGLE  
NEW MEXICO-CATRON CO.  
7.5 MINUTE SERIES (TUSSEK MAPS)

T. 105

R.16 W.

R. 15 W.

T. 115.

Mapled by the U.S. Forest Service  
 United States Forest Service  
**R.I.B.W.**  
 Department of Agriculture  
 10000 10th Avenue, N.E., Alaska  
 99507  
 Alaska Department of Fish and Game  
 10000 10th Avenue, N.E., Alaska  
 99507

THIS MAP COMPLETS WITH NATIONAL MAP ACCURACY STANDARDS  
FOR SALE BY U.S. GEOLOGICAL SURVEY, DENVER, COLORADO 80225 OR WASHINGTON, D.C. 20242  
A FOLDER DESCRIBING TOPOGRAPHIC MAPS AND SYMBOLS IS AVAILABLE ON REQUEST

Map 4  
LOGO MOUNTAIN, N. MEX.  
SOUTHERN APPALACHIAN  
1963  
ARK. GEO. SURV. 12-1963, 1964

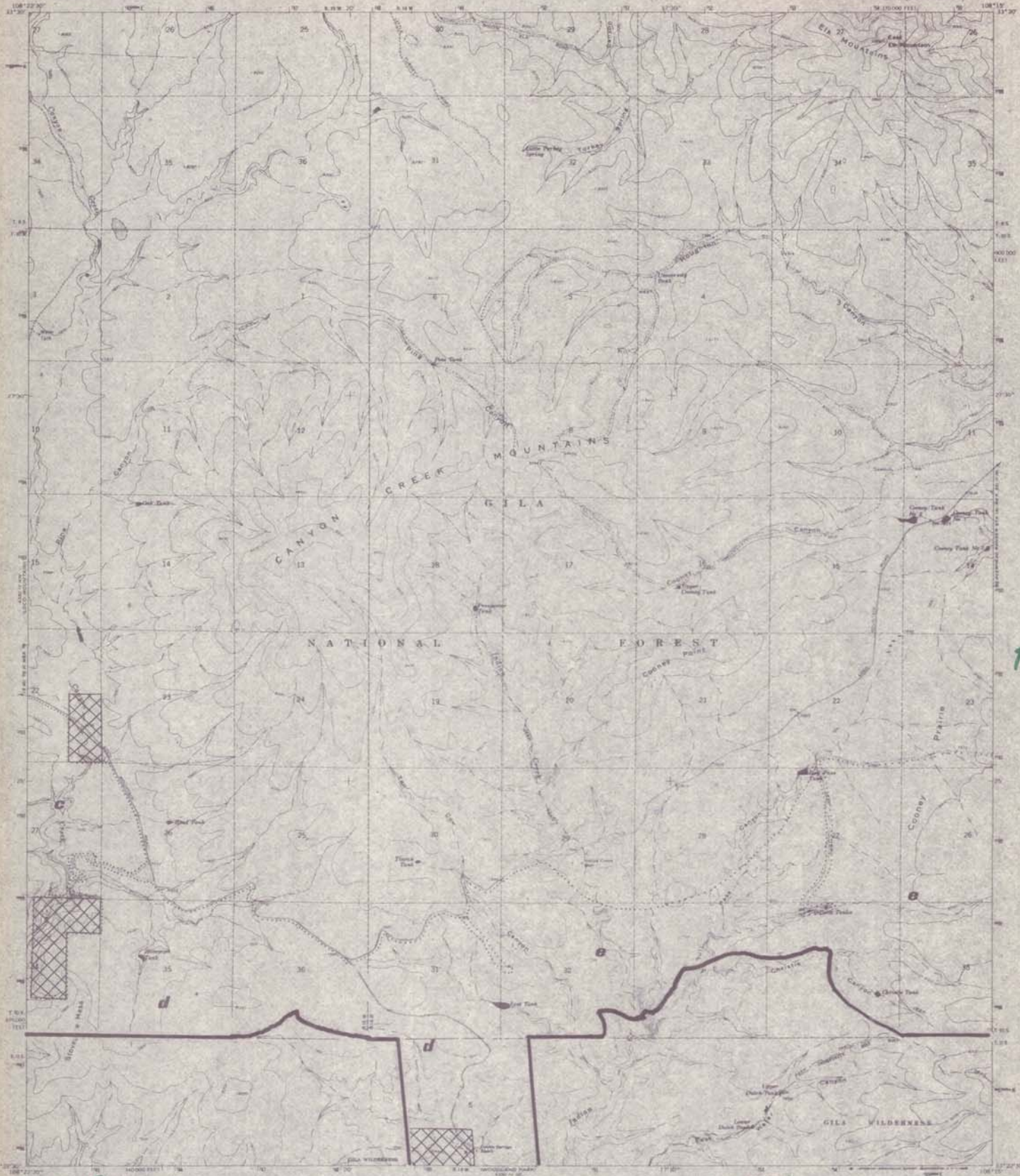
CHILDREN'S PAPERS



# GILA WILDERNESS

UNITED STATES  
DEPARTMENT OF THE INTERIOR  
GEOLOGICAL SURVEY

CANYON CREEK MOUNTAINS QUADRANGLE  
NEW MEXICO—CATRON CO.  
7.5 MINUTE SERIES (TOPOGRAPHIC)



Map 5  
CANYON CREEK MOUNTAINS, N. MEX.  
NT1025-101015-7.5  
1963  
AND ADDED BY RE. 101015-7.5

Scale 1:25,000  
CONTOUR INTERVAL 40 FEET  
ELEVATION IN FEET  
1000 1200 1400 1600 1800 2000 2200 2400 2600 2800 3000 3200 3400 3600 3800 4000 4200 4400 4600 4800 5000 5200 5400 5600 5800 6000 6200 6400 6600 6800 7000 7200 7400 7600 7800 8000 8200 8400 8600 8800 9000 9200 9400 9600 9800 10000

Map 5  
CANYON CREEK MOUNTAINS, N. MEX.  
NT1025-101015-7.5  
1963  
AND ADDED BY RE. 101015-7.5

R.14W.

T.11S.

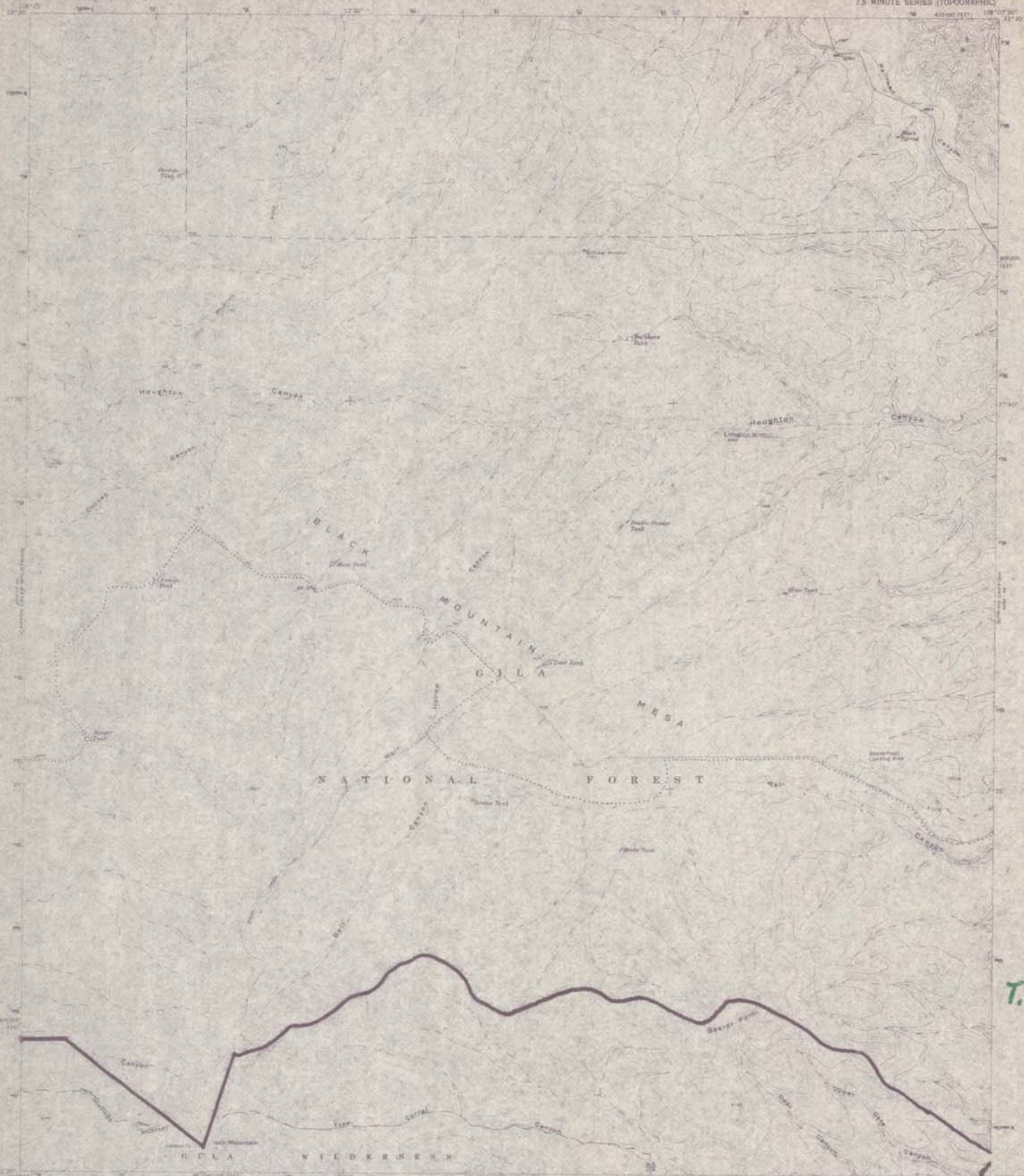
T.10S.



# GILA WILDERNESS

UNITED STATES  
DEPARTMENT OF THE INTERIOR  
GEOLOGICAL SURVEY

BLACK MOUNTAIN QUADRANGLE  
NEW MEXICO-CATRON CO.  
7.5 MINUTE SERIES (TOPOGRAPHIC)



T.IIS.

R.13W

CONTOUR INTERVAL 40 FEET

Scale 1:62,500

Scale 1:62,500

Scale 1:62,500

Scale 1:62,500

Scale 1:62,500

Scale 1:62,500

Scale 1:62,500

Scale 1:62,500

Scale 1:62,500

Scale 1:62,500

Scale 1:62,500

Scale 1:62,500

Scale 1:62,500

Scale 1:62,500

Scale 1:62,500

Scale 1:62,500

Scale 1:62,500

Scale 1:62,500

Scale 1:62,500

Scale 1:62,500

Scale 1:62,500

Scale 1:62,500

Scale 1:62,500

Scale 1:62,500

Scale 1:62,500

Scale 1:62,500

Scale 1:62,500

Scale 1:62,500

Scale 1:62,500

Scale 1:62,500

Scale 1:62,500

Scale 1:62,500

Scale 1:62,500

Scale 1:62,500

Scale 1:62,500

Scale 1:62,500

Scale 1:62,500

Scale 1:62,500

Scale 1:62,500

Scale 1:62,500

Scale 1:62,500

Scale 1:62,500

Scale 1:62,500

Scale 1:62,500

Scale 1:62,500

Scale 1:62,500

Scale 1:62,500

Scale 1:62,500

Scale 1:62,500

Scale 1:62,500

Scale 1:62,500

Scale 1:62,500

Scale 1:62,500

Scale 1:62,500

Scale 1:62,500

Scale 1:62,500

Scale 1:62,500

Scale 1:62,500

Scale 1:62,500

Scale 1:62,500

Scale 1:62,500

Scale 1:62,500

Scale 1:62,500

Scale 1:62,500

Scale 1:62,500

Scale 1:62,500

Scale 1:62,500

Scale 1:62,500

Scale 1:62,500

Scale 1:62,500

Scale 1:62,500

Scale 1:62,500

Scale 1:62,500

Scale 1:62,500

Scale 1:62,500

Scale 1:62,500

Scale 1:62,500

Scale 1:62,500

Scale 1:62,500

Scale 1:62,500

Scale 1:62,500

Scale 1:62,500

Scale 1:62,500

Scale 1:62,500

Scale 1:62,500

Scale 1:62,500

Scale 1:62,500

Scale 1:62,500

Scale 1:62,500

Scale 1:62,500

Scale 1:62,500

Scale 1:62,500

Scale 1:62,500

Scale 1:62,500

Scale 1:62,500

Scale 1:62,500

Scale 1:62,500

Scale 1:62,500

Scale 1:62,500

Scale 1:62,500

Scale 1:62,500

Scale 1:62,500

Scale 1:62,500

Scale 1:62,500

Scale 1:62,500

Scale 1:62,500

Scale 1:62,500

Scale 1:62,500

Scale 1:62,500

Scale 1:62,500

Scale 1:62,500

Scale 1:62,500

Scale 1:62,500

Scale 1:62,500

Scale 1:62,500

Scale 1:62,500

Scale 1:62,500

Scale 1:62,500

Scale 1:62,500

Scale 1:62,500

Scale 1:62,500

Scale 1:62,500

Scale 1:62,500

Scale 1:62,500

Scale 1:62,500

Scale 1:62,500

Scale 1:62,500

Scale 1:62,500

Scale 1:62,500

Scale 1:62,500

Scale 1:62,500

Scale 1:62,500

Scale 1:62,500

Scale 1:62,500

Scale 1:62,500

Scale 1:62,500

Scale 1:62,500

Scale 1:62,500

Scale 1:62,500

Scale 1:62,500

Scale 1:62,500

Scale 1:62,500

Scale 1:62,500

Scale 1:62,500

Scale 1:62,500

Scale 1:62,500

Scale 1:62,500

Scale 1:62,500

Scale 1:62,500

Scale 1:62,500

Scale 1:62,500

Scale 1:62,500

Scale 1:62,500

Scale 1:62,500

Scale 1:62,500

Scale 1:62,500

Scale 1:62,500

Scale 1:62,500

Scale 1:62,500

Scale 1:62,500

Scale 1:62,500

Scale 1:62,500

Scale 1:62,500

Scale 1:62,500

Scale 1:62,500

Scale 1:62,500

Scale 1:62,500

Scale 1:62,500

Scale 1:62,500

Scale 1:62,500

Scale 1:62,500

Scale 1:62,500

Scale 1:62,500

Scale 1:62,500

Scale 1:62,500

Scale 1:62,500

Scale 1:62,500

Scale 1:62,500

Scale 1:62,500

Scale 1:62,500

Scale 1:62,500

Scale 1:62,500

Scale 1:62,500

Scale 1:62,500

Scale 1:62,500

Scale 1:62,500

Scale 1:62,500

Scale 1:62,500

Scale 1:62,500

Scale 1:62,500

Scale 1:62,500

Scale 1:62,500

Scale 1:62,500

Scale 1:62,500

Scale 1:62,500

Scale 1:62,500

Scale 1:62,500

Scale 1:62,500

Scale 1:62,500

Scale 1:62,500

Scale 1:62,500

Scale 1:62,500

Scale 1:62,500

Scale 1:62,500

Scale 1:62,500

Scale 1:62,500

Scale 1:62,500

Scale 1:62,500

Scale 1:62,500

Scale 1:62,500

Scale 1:62,500

Scale 1:62,500

Scale 1:62,500

Scale 1:62,500

Scale 1:62,500

Scale 1:62,500

Scale 1:62,500

Scale 1:62,500

Scale 1:62,500

Scale 1:62,500

Scale 1:62,500

Scale 1:62,500

Scale 1:62,500

Scale 1:62,500

Scale 1:62,500

Scale 1:62,500

Scale 1:62,500

Scale 1:62,500

Scale 1:62,500

Scale 1:62,500

Scale 1:62,500

Scale 1:62,500

Scale 1:62,500

Scale 1:62,500

Scale 1:62,500

Scale 1:62,500

Scale 1:62,500

Scale 1:62,500

Scale 1:62,500

Scale 1:62,500

Scale 1:62,500

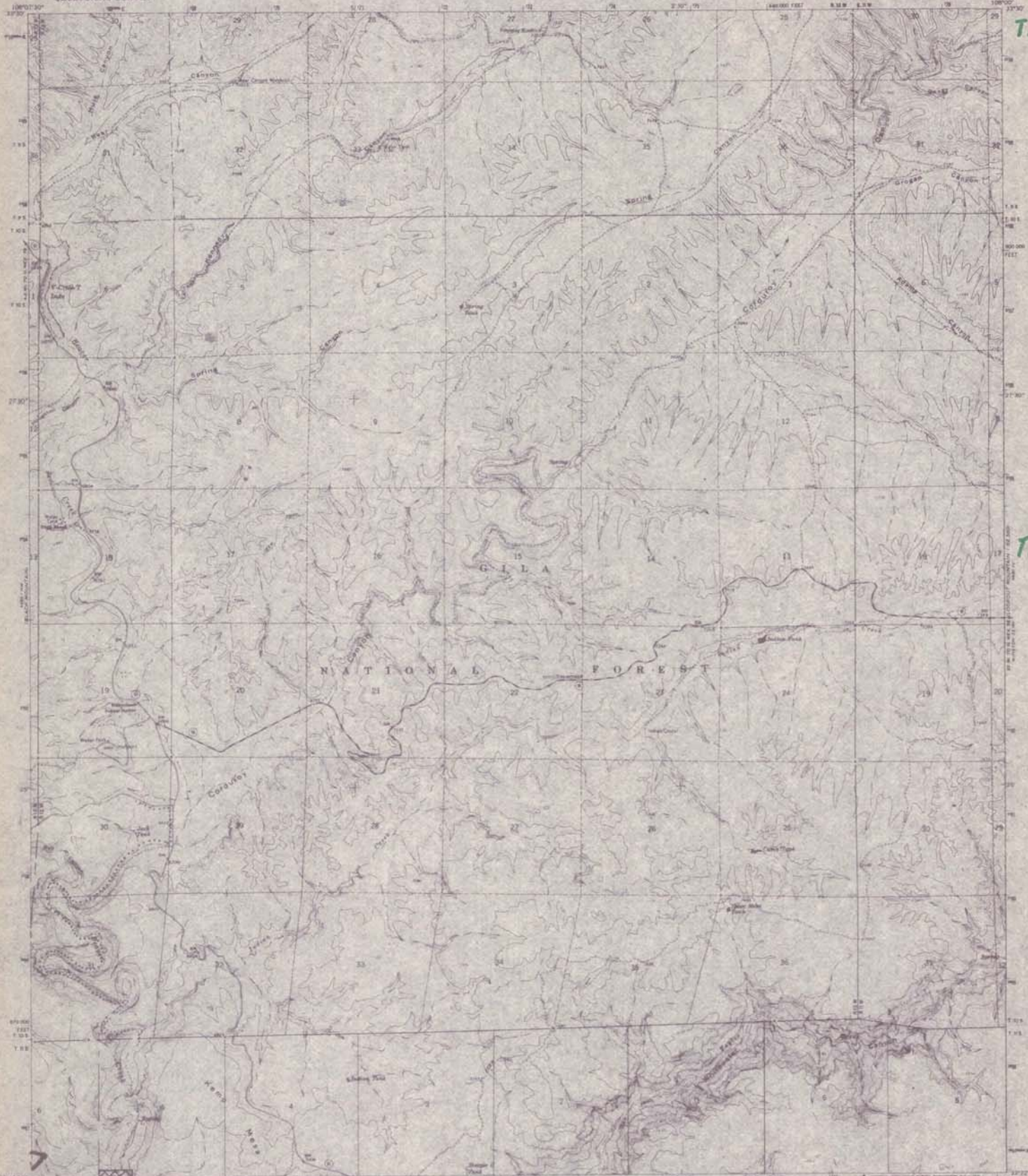
Scale 1:62,500



# GILA WILDERNESS

UNITED STATES  
DEPARTMENT OF THE INTERIOR  
GEOLOGICAL SURVEY

SPRING CANYON QUADRANGLE  
NEW MEXICO-CATRON CO.  
7.5 MINUTE SERIES (TOPOGRAPHIC)



T.95.

T.105.

R.12 W.

R.11 W.

Maplet, edited and published by the Geological Survey  
Copyright by USGS and USGAS  
Topography by photogrammetric methods from aerial  
photographs taken 1956. Contour interval 100 ft.  
Publication projection: 1983 North American datum  
10,000-foot grid based on New Mexico coordinate system  
and zone.  
1000-meter Universal Transverse Mercator grid zone  
zone 12N, 1000-meter UTM.  
Printed and bound by the Geological Survey.



ROAD CLASSIFICATION  
Medium-duty Light-duty  
Unimproved dirt  
State Road

Map 7

SPRING CANYON, N. MEX.  
N122.5-W108.0-7.5

THIS MAP COMPLETES WITH NATIONAL MAP ACCURACY STANDARDS  
FOR SALE BY U.S. GEOLOGICAL SURVEY, DENVER, COLORADO 80262, OR WASHINGTON, D.C. 20542  
A FOLDER CONTAINING TOPOGRAPHIC MAPS AND SYMBOLS IS AVAILABLE ON REQUEST

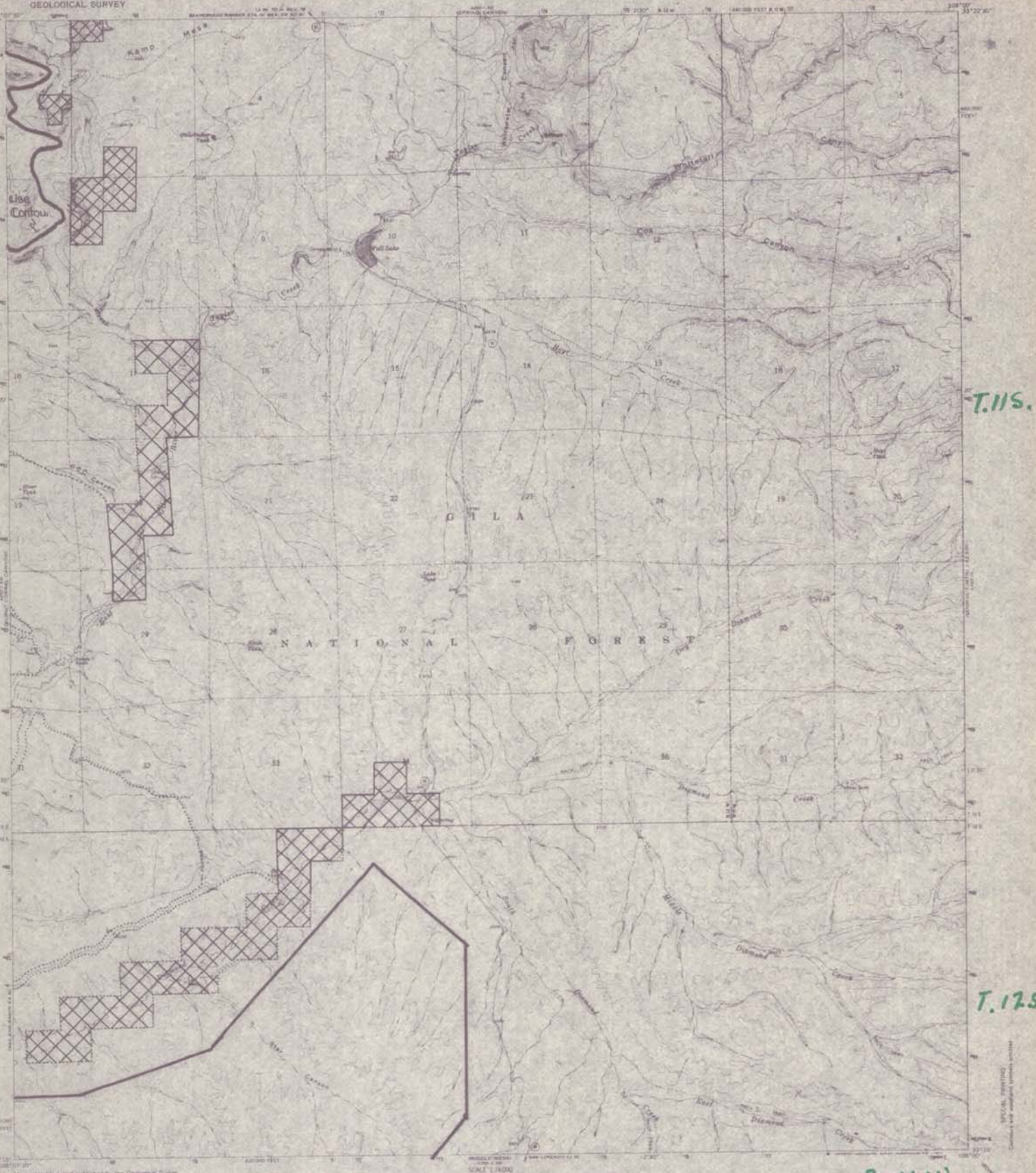
1967  
GPO: 435-170-0000-1967



# GILA WILDERNESS

UNITED STATES  
DEPARTMENT OF THE INTERIOR  
GEOLOGICAL SURVEY

WALL LAKE QUADRANGLE  
NEW MEXICO-CATRON CO.  
7.5 MINUTE SERIES (TOPOGRAPHIC)



T.115.

T.125

Maplet, edited, and published by the Geological Survey  
Copyright by USGS and USFWS  
Topography by photogrammetric methods from aerial  
photographs taken 1946. Data checked 1967  
Horizontal projection: 1927 North American datum  
Vertical datum: 1929 mean sea level  
Scale: 1:50,000  
Contour interval: 40 feet  
Elevation in feet  
Cultural features are not shown because of insufficient data.

R.12W.

R.11W.

Map B

WALL LAKE, N. MEX.  
13115-110000/7.5

FOR SALE BY U.S. GEOLOGICAL SURVEY, DENVER, COLORADO 80219 OR WASHINGTON, D.C. 20542  
A POLAR GRAPHING PHOTOGRAPHIC MAPS AND SYMBOLS IS AVAILABLE ON REQUEST

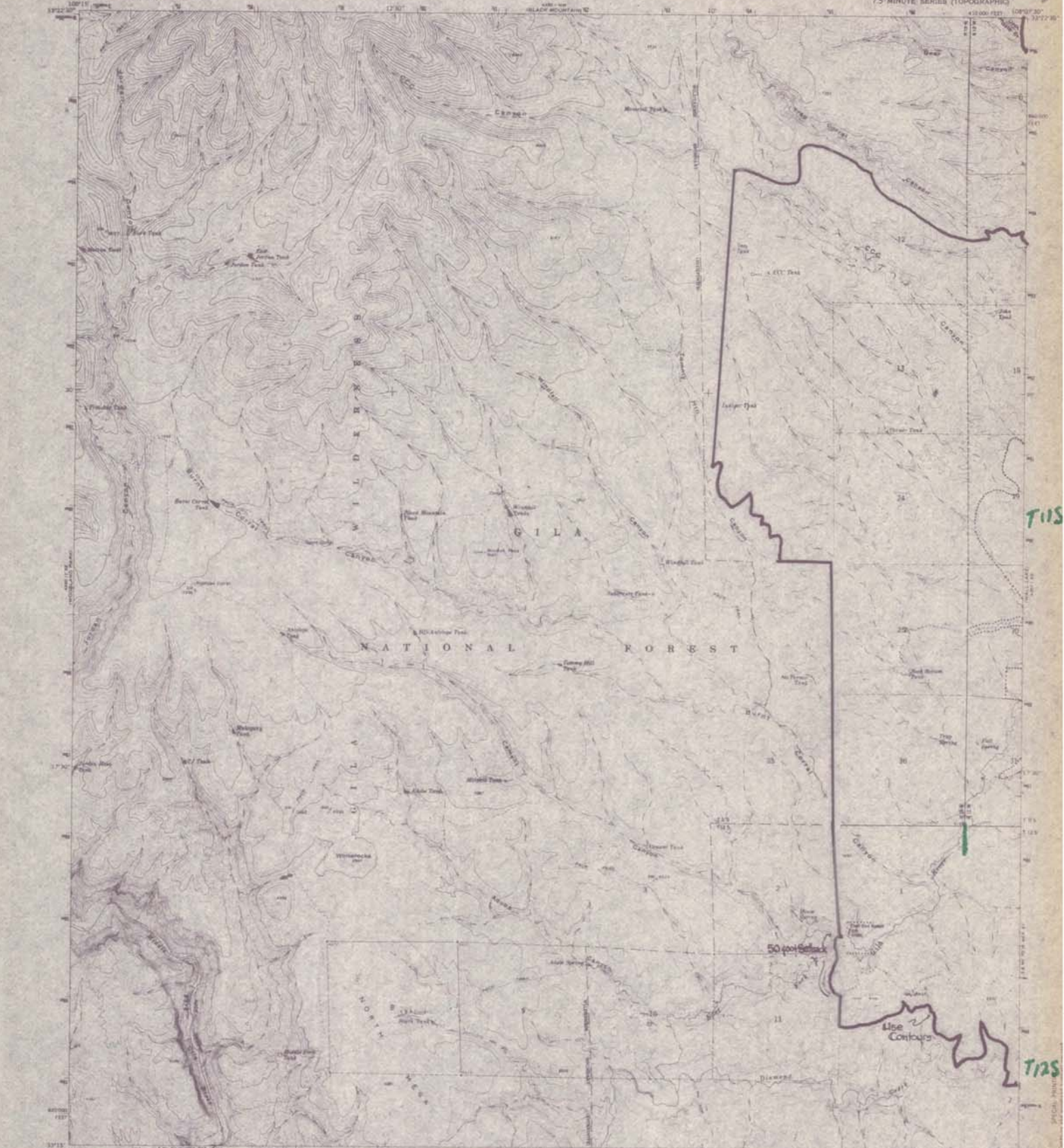
1967  
486 43M / 82 SERIES 1961



# GILA WILDERNESS

UNITED STATES  
DEPARTMENT OF THE INTERIOR  
GEOLOGICAL SURVEY

BURNT CORRAL CANYON QUADRANGLE  
NEW MEXICO-CATRON CO.  
7.5-MINUTE SERIES (TOPOGRAPHIC)



**RIW**

CONTOUR INTERVAL 40 FEET  
DATUM IS MEAN SEA LEVEL

Map 9

BURNT CORRAL CANYON, N. MEX.  
N 3114 - 4100215

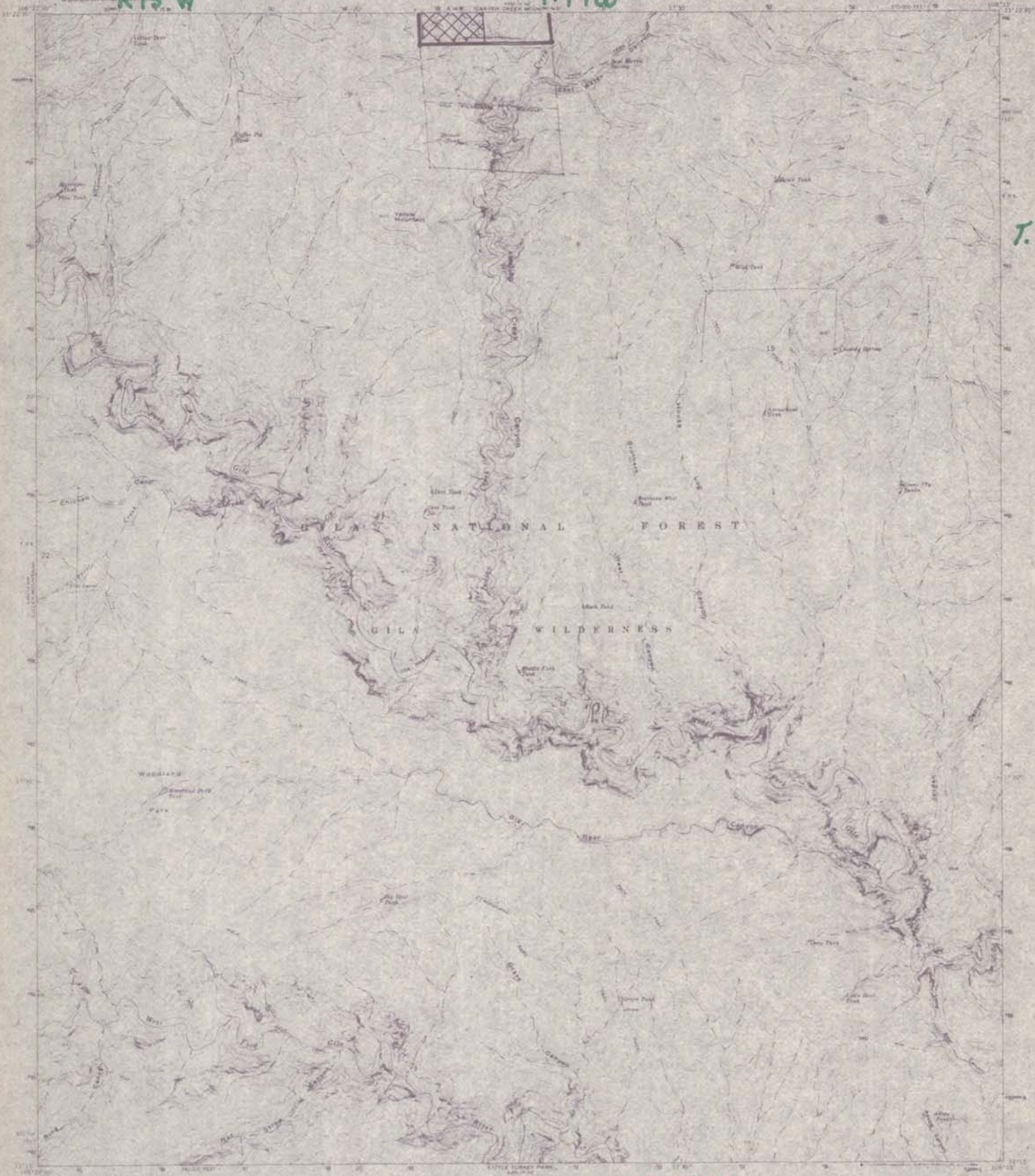
(4th EDITION) 1961



## GILA WILDERNESS

UNITED STATES  
DEPARTMENT OF THE INTERIOR  
GEOLOGICAL SURVEY

WOODLAND PARK QUADRANGLE  
NEW MEXICO-CATRON CO  
7.5 MINUTE SERIES (TOPOGRAPHIC)



**R.15 W.**

[illegible]

Map 10

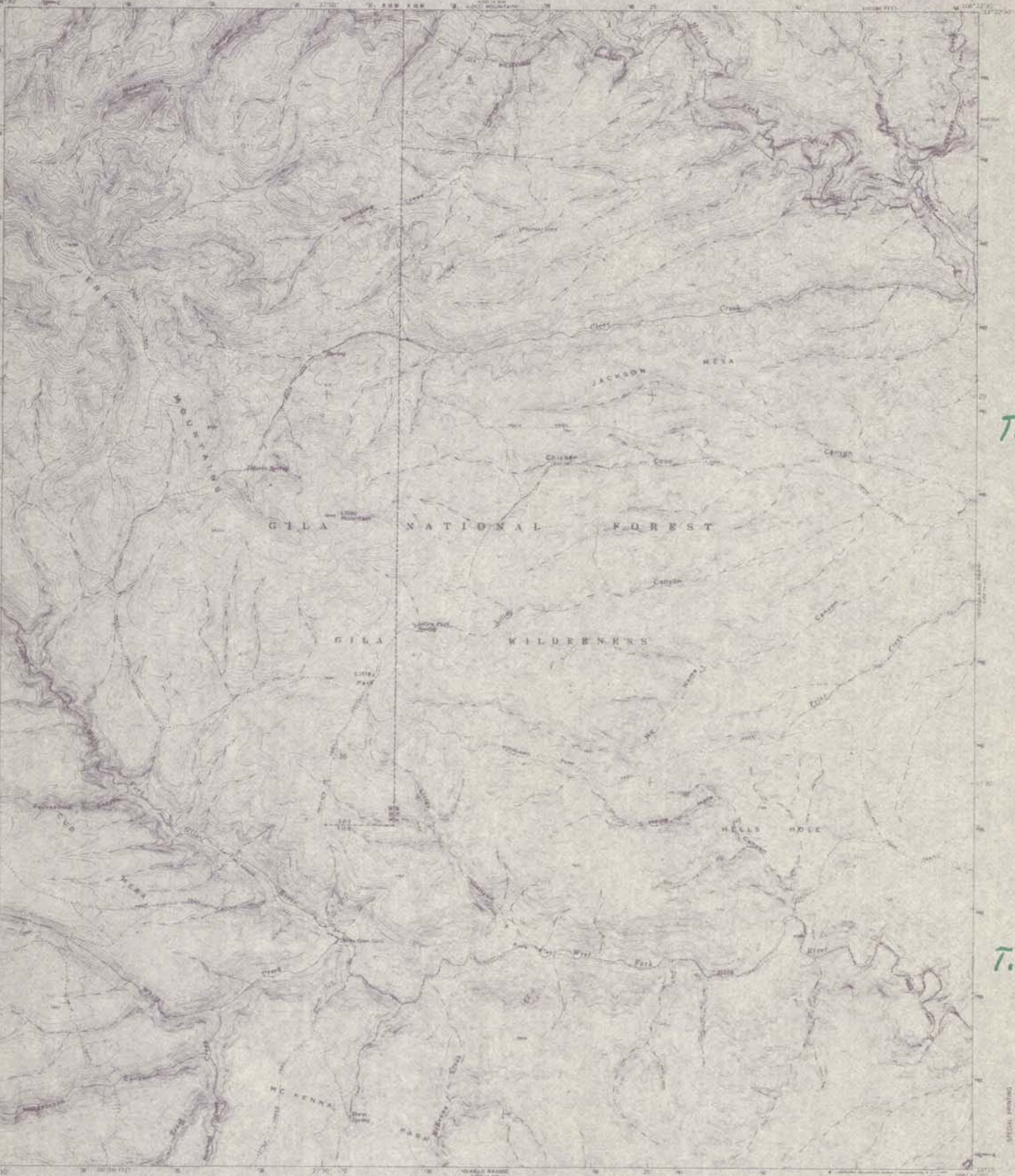
WOODLAND PARK, N. MEX.  
ELLIS-WOODS-F.S.  
1965  
AND 1966-67 - LINDA WOOD



# GILA WILDERNESS

UNITED STATES  
DEPARTMENT OF THE INTERIOR  
GEOLOGICAL SURVEY

LILLEY MOUNTAIN QUADRANGLE  
NEW MEXICO-CATRON CO.  
7.5 MINUTE SERIES (TOPOGRAPHIC)



T.115.

T.125.

R.16W.

R.15W.

SCALE 1:24,000  
CONTOUR INTERVAL 40 FEET  
ELEVATION IN FEET  
THIS MAP COMPLETES WITH NATIONAL MAP ACCURACY STANDARDS  
FOR SALE BY U.S. GEOLOGICAL SURVEY, DENVER, COLORADO 80219 OR WASHINGTON, D.C. 20542  
A FOLDER DESCRIBING TOPOGRAPHIC MAPS AND SYMBOLS IS AVAILABLE ON REQUEST

ROAD CLASSIFICATION  
T-115  
Map II  
LILLEY MOUNTAIN, N. MEX.  
N3115-431802 7.5  
1965  
PH. 400 (1:24,000) SERIES 480



MOGOLLON BALDY PEAK QUADRANGLE  
NEW MEXICO-CATRON CO  
7.5-MINUTE SERIES (TOPOGRAPHIC)

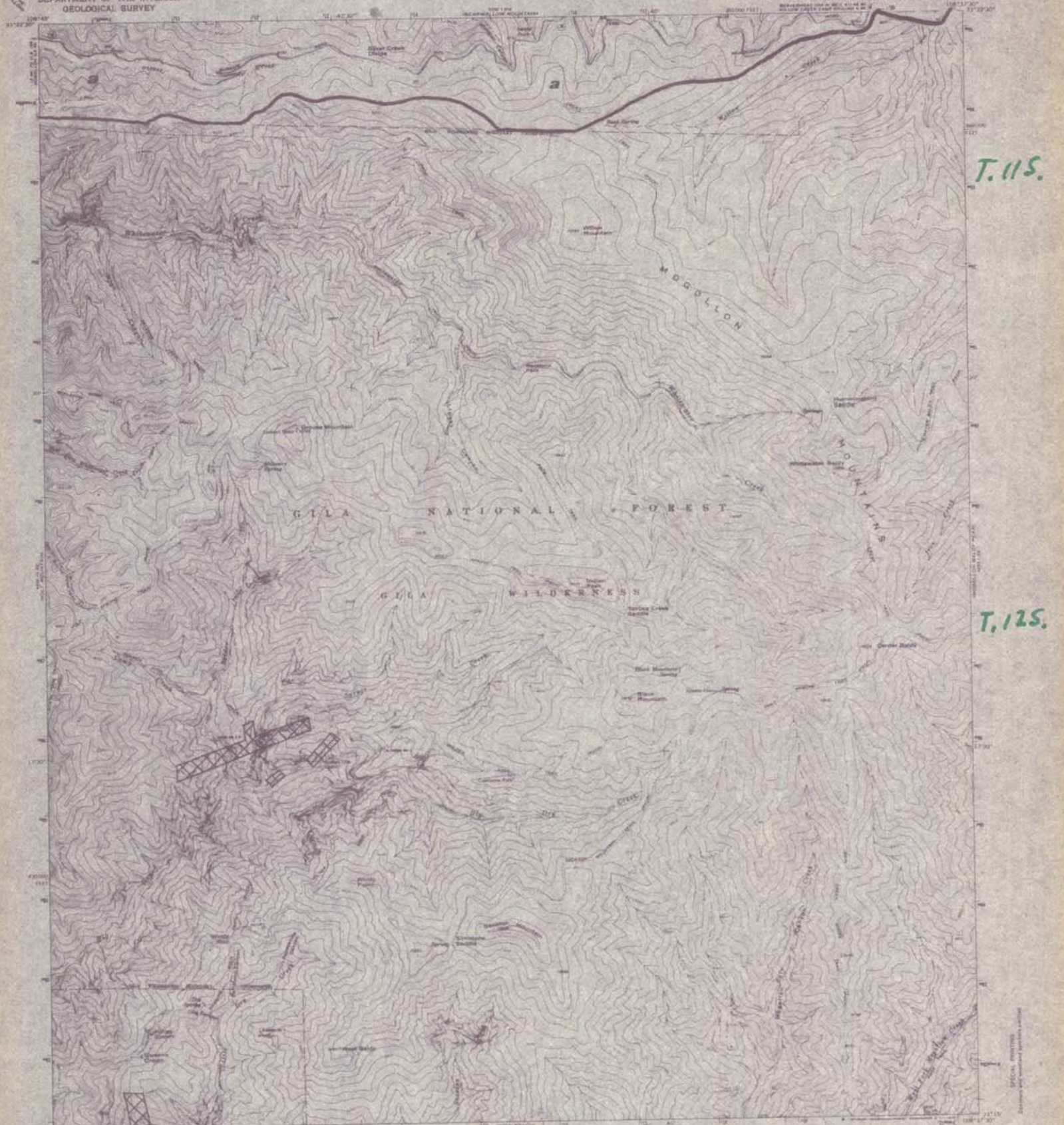




# GILA WILDERNESS

UNITED STATES  
DEPARTMENT OF THE INTERIOR  
GEOLOGICAL SURVEY

GROUSE MOUNTAIN QUADRANGLE  
NEW MEXICO-CATRON CO.  
7.5 MINUTE SERIES (TOPOGRAPHIC)

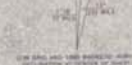


T.11S.

T.12S.

R.18W.

Revised, added, and published by the Geological Survey  
for the U.S. Department of the Interior  
under authority of the Act of March 3, 1879, (20 Stat. 448)  
and the Act of March 3, 1897, (30 Stat. 616)  
Population projection: 1967 North American datum  
10,000 feet and based on New Mexico mainline section  
and base  
1:50,000 United States Topographic map and scale  
and 12, shown in blue  
Land used here has been established as and not  
shown because of insufficient data



SCALE 1:24,000  
CONTOUR INTERVAL, 40 FEET  
(BASED ON 1967 NAD 83)

THIS MAP COMPLETES THE NATIONAL MAP ACQUANCY PROGRAM  
FOR SALE BY U.S. GEOLOGICAL SURVEY, DENVER, COLORADO, 80219, OR WASHINGTON, D. C. 20540  
A FOLDER OF INFORMATION, TOPOGRAPHIC MAPS AND PRODUCTS IS AVAILABLE ON REQUEST

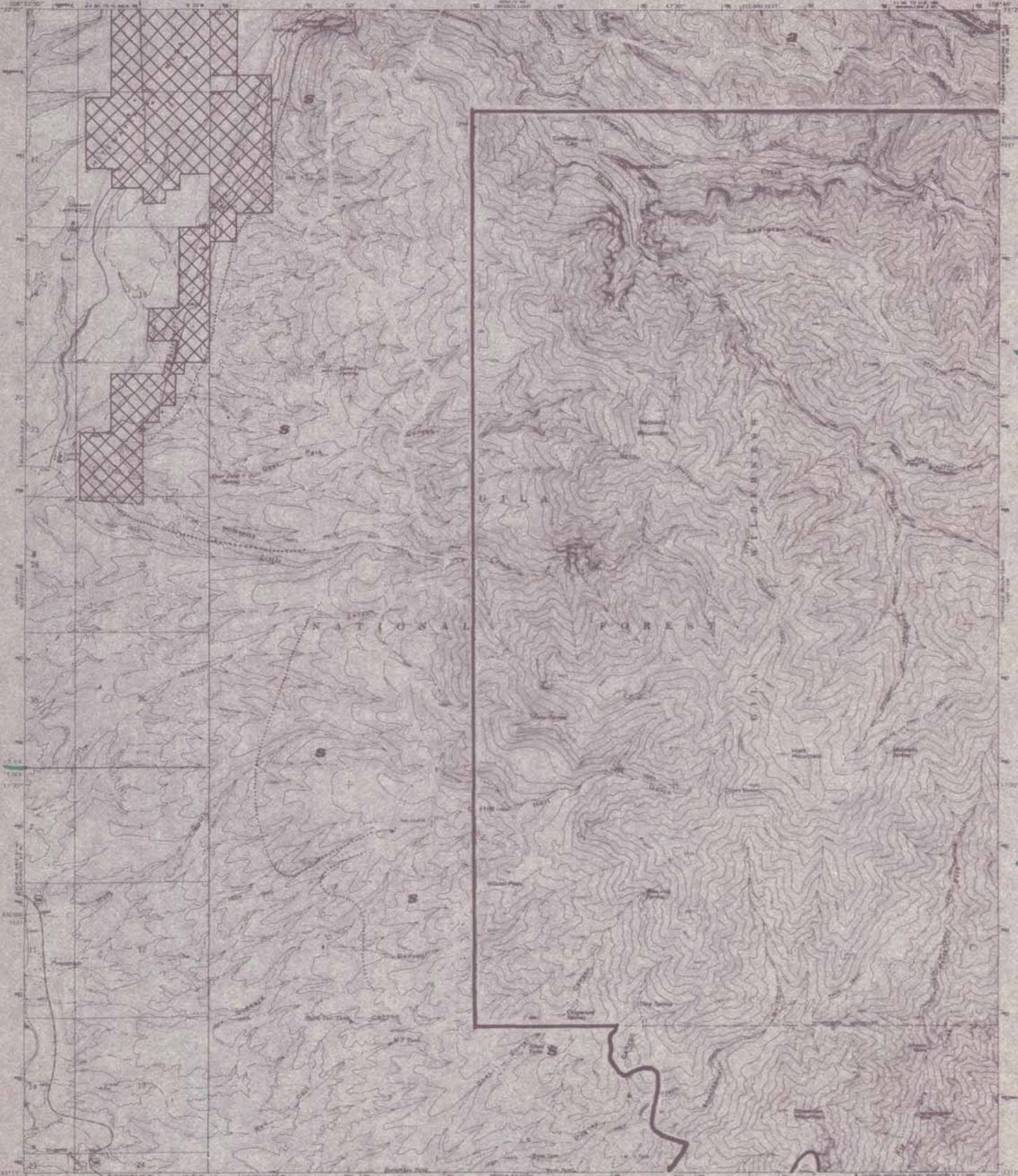
ROAD CLASSIFICATION  
Unimproved Road  
State Road  
Map 13  
GROUSE MOUNTAIN, N. MEX.  
W31N-W30E-18W  
1968  
AND 4300-1 BY JORDAN, 1961



# GILA WILDERNESS

UNITED STATES  
DEPARTMENT OF THE INTERIOR  
GEOLOGICAL SURVEY

HOLT MOUNTAIN QUADRANGLE  
NEW MEXICO-CATRON CO.  
7.5 MINUTE SERIES (TOPOGRAPHIC)



R. 20. W.

R. 19 W.

Topography by unphotographed methods from aerial photographs taken 1964. Field checked 1965.  
Horizontal datum: 1927 North American Datum.  
Vertical datum: 1929 North American Datum.  
Scale: 1:25,000.  
Projection: UTM.  
Zone: 12N.  
Datum: NAD 83.

1:25,000

SCALE 1:25,000  
CONTOUR INTERVAL 40 FEET  
ELEVATION IN FEET

ROAD CLASSIFICATION  
Major Road  
Minor Road  
Unimproved Road  
U.S. Road  
State Road  
Mop 14  
HOLT MOUNTAIN, N. MEX.  
7.5 MINUTE SERIES  
1965  
AMS 210 14 02, SERIES VII

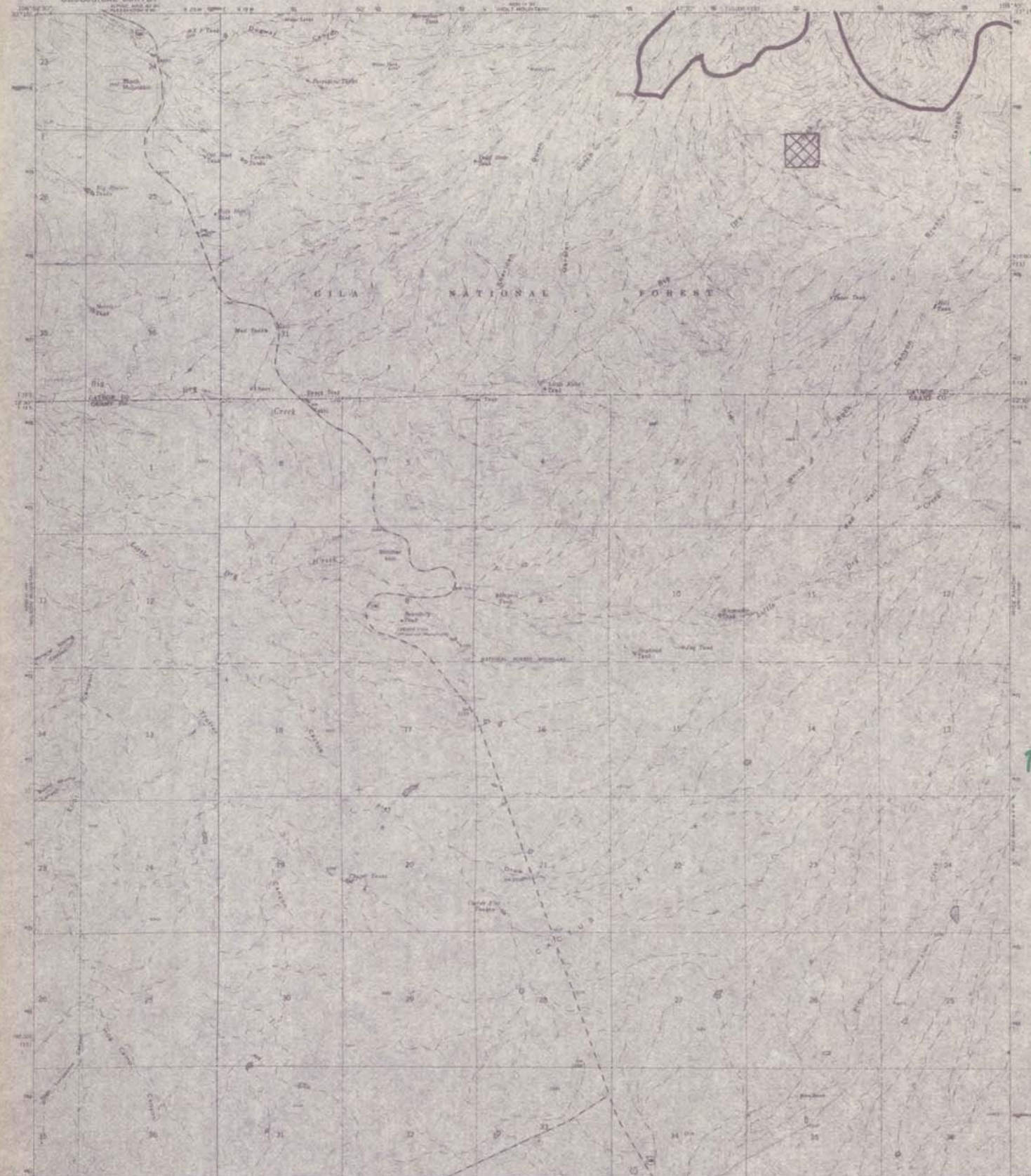
THIS MAP COMPLETES WITH NATIONAL MAP REVISIONS  
FOR SALE BY U.S. GEOLOGICAL SURVEY, DEPT. OF THE INTERIOR, WASHINGTON, D.C. 20549  
A FOLDER BEARING TOPOGRAPHIC MAPS AND SYMBOLS IS AVAILABLE ON REQUEST



# GILA WILDERNESS

UNITED STATES  
DEPARTMENT OF THE INTERIOR  
GEOLOGICAL SURVEY

MOON RANCH QUADRANGLE  
NEW MEXICO  
7.5 MINUTE SERIES (TOPOGRAPHIC)



T. 12 S.

T. 13 S.

R. 10 W.

R. 19 W.

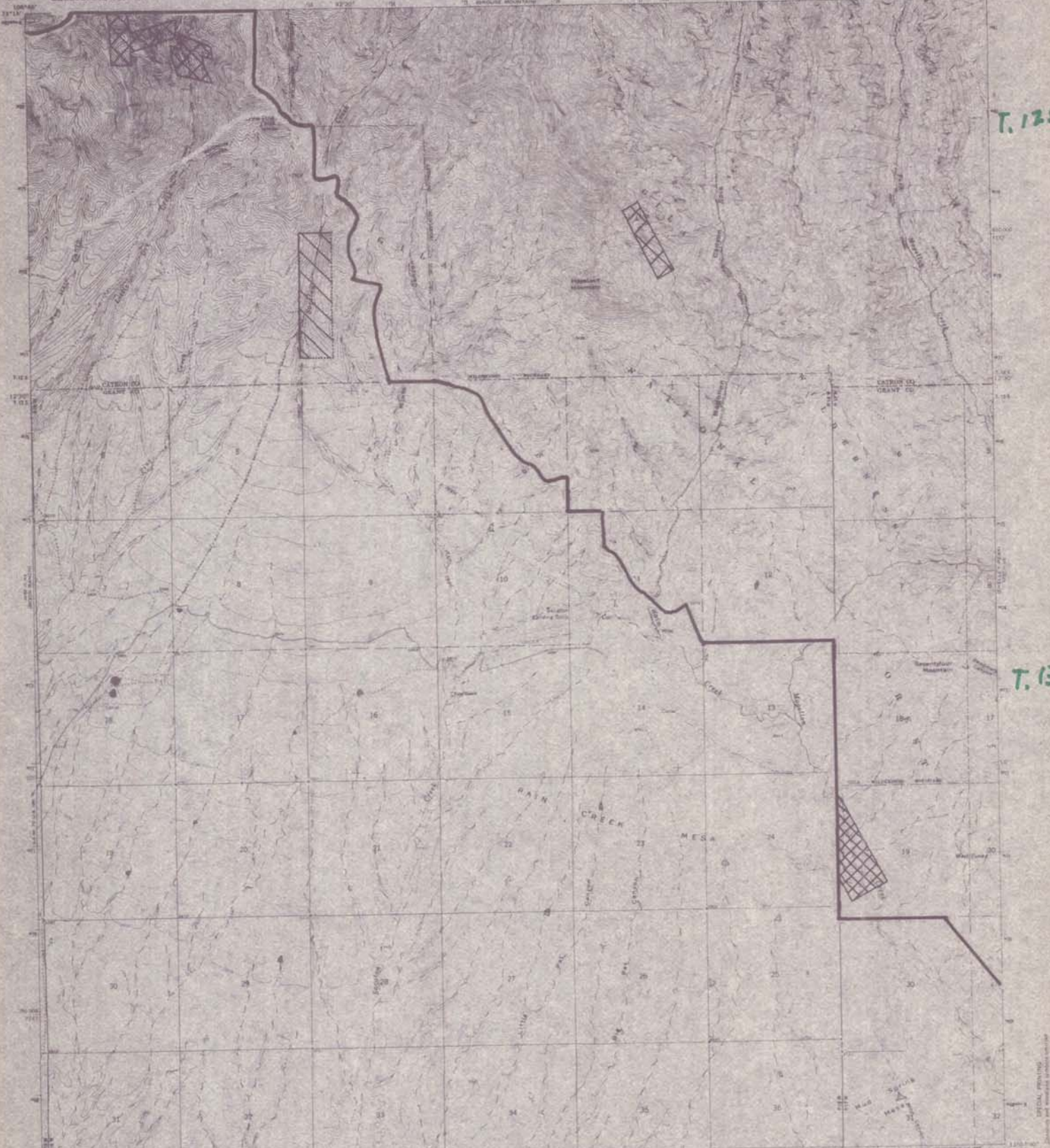
Map 15  
MOON RANCH, N. MEX.  
40° 55' 00" N. 108° 00' 00" W.  
1968  
ANY OTHER 15 MIN. 7.5 MINUTE SERIES



# GILA WILDERNESS

UNITED STATES  
DEPARTMENT OF THE INTERIOR  
GEOLOGICAL SURVEY

RICE RANCH QUADRANGLE  
NEW MEXICO  
7.5 MINUTE SERIES (TOPOGRAPHIC)



Map and notes were published by the Geological Survey  
Control by USGS and GPO  
Photocopy for noncommercial use only from actual  
photocopy since 1964. First printed 1965  
Publication information: 1:250,000 North American datum  
25,000-foot grid based on New Mexico coordinate system.  
Scale: 1:250,000  
1:250,000 under National Triangulation and Meridian system  
Scale 1:250,000  
This map shows only features which are shown on  
Cadastral and maps are intended to be used only

R. 18W.

R. 17W.

FOR SALE BY U.S. GEOLOGICAL SURVEY, DENVER, COLORADO 80225, OR WASHINGTON, D.C. 20502  
A FOLDER DESCRIBING TOPOGRAPHIC MAPS AND SYMBOLS IS AVAILABLE ON REQUEST

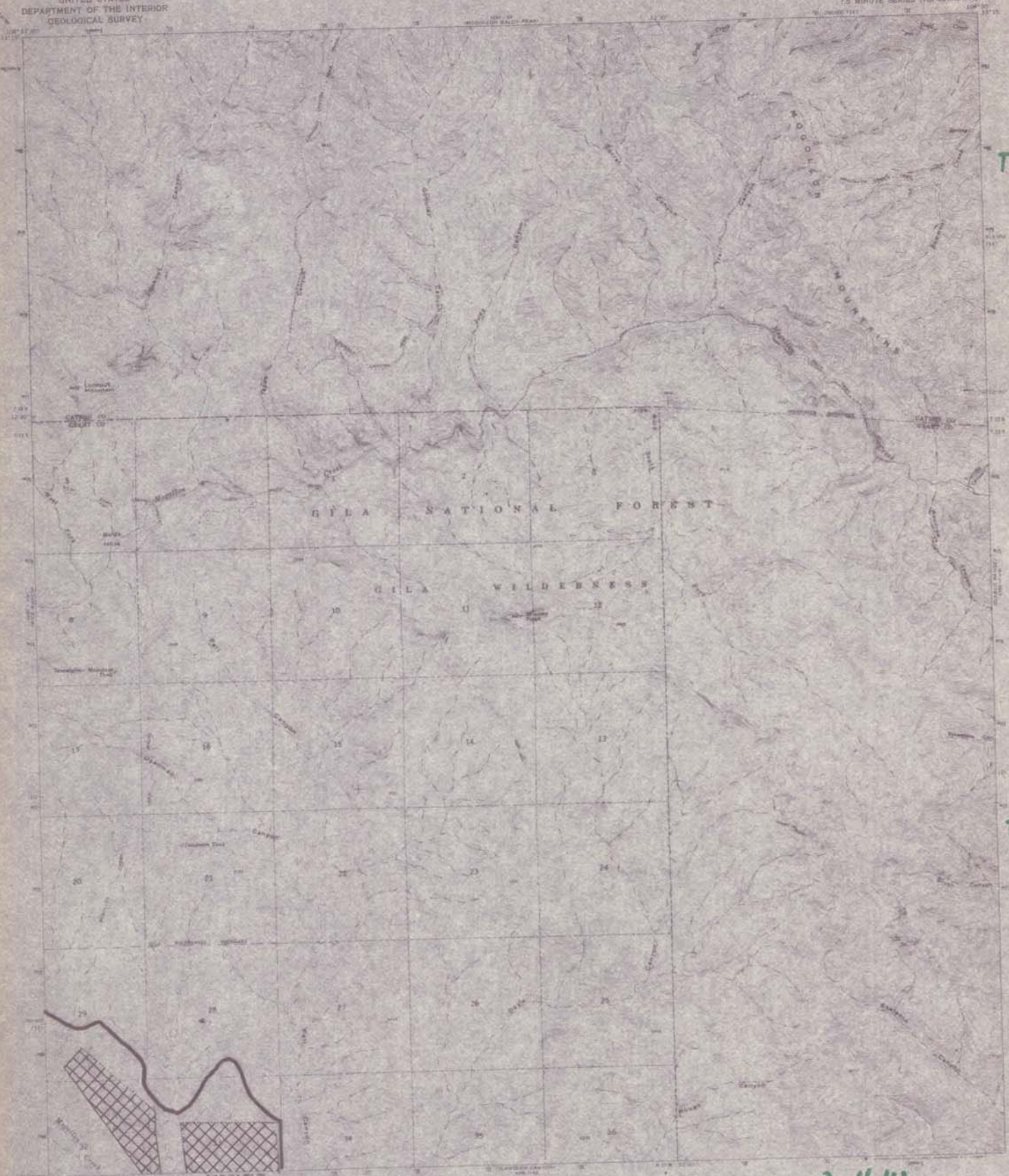
Map 16  
RICE RANCH, N. MEX.  
ALBERTA - WISCONSIN 1:5  
1965  
AND ALSO IN NEW YORK, 1965



# GILA WILDERNESS

UNITED STATES  
DEPARTMENT OF THE INTERIOR  
GEOLOGICAL SURVEY

SHELLEY PEAK QUADRANGLE  
NEW MEXICO  
15 MINUTE SERIES (TOPOGRAPHIC)



T.12S.

T.13S.

R.17W.

R.16W.

Scale 1:62,500  
1 inch = 10 miles  
CONT. SUR. INT. 10 FEET  
ELEV. IN FEET  
FOR SALE BY U. S. GEOLOGICAL SURVEY, DENVER, COLORADO 80219, OR WASHINGTON, D. C. 20548  
A FOLDER DESCRIBING TOPOGRAPHIC MAPS AND SYMBOLS IS AVAILABLE ON REQUEST

ROAD CLASSIFICATION  
Unimproved dirt  
Map 17

SHELLEY PEAK, N. MEX.  
1965  
1:62,500

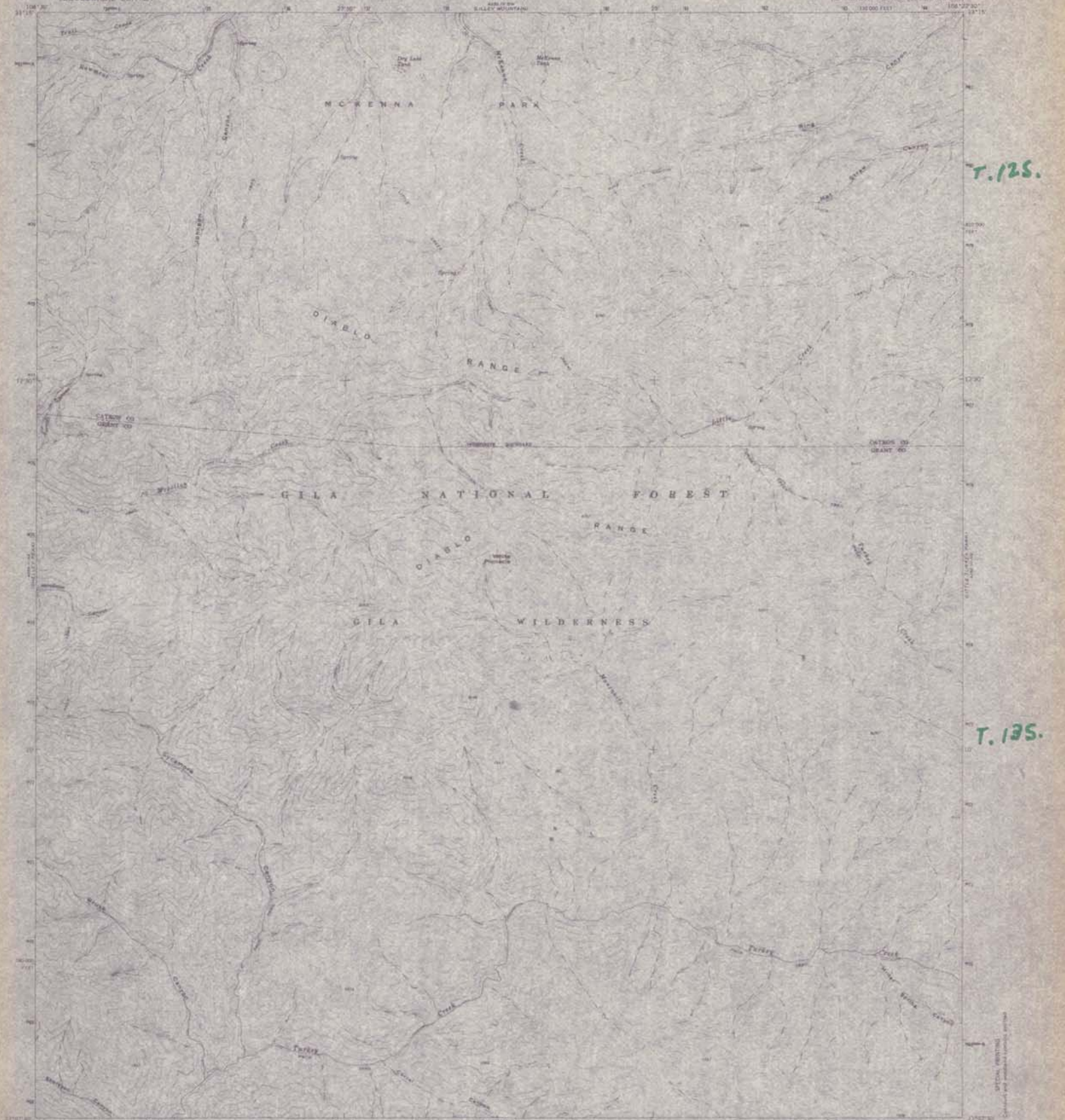
Special printing  
Delivery and postage outside U.S.



# GILA WILDERNESS

UNITED STATES  
DEPARTMENT OF THE INTERIOR  
GEOLOGICAL SURVEY

DIABLO RANGE QUADRANGLE  
NEW MEXICO  
7.5 MINUTE SERIES (TOPOGRAPHIC)



T. 12S.

T. 13S.

R. 16 W.

R. 15 W.

Maped, edited, and published by the Geological Survey, U.S. Department of the Interior, from aerial photographs taken 1954. Field checked 1960.  
Topographic projection, 1927 North American datum.  
1:25,000 scale and based on New Mexico coordinate system.  
1960 New Universal Transverse Mercator grid data.  
Scale 1:25,000.  
Where indicated, road, trail, and other information is not shown because of insufficient data.

Scale 1:25,000  
CONTOUR INTERVAL 40 FEET  
GEOMETRIC CENTER  
THIS MAP COMPLETES WITH NATIONAL MAP COORDINATE STANDARD.  
FOR SALE BY U.S. GEOLOGICAL SURVEY, DENVER, COLORADO 80215 OR WASHINGTON, D.C. 20547  
A FORMER OF THE GEOLOGICAL SURVEY, DENVER, COLORADO 80215 OR WASHINGTON, D.C. 20547



Map 18

DIABLO RANGE, N. MEX.  
1:25,000 S. 1:25,000  
1960  
AND 1960 U.S. GEOLOGICAL SURVEY



GILA WILDERNESS

UNITED STATES  
DEPARTMENT OF THE INTERIOR  
GEOLOGICAL SURVEY

LITTLE TURKEY PARK QUADRANGLE  
NEW MEXICO  
7.5 MINUTE SERIES (TOPOGRAPHIC)

T. 125

T. 135.

R. 14W.

R. 15 W.

**R.15 W.**

THIS MAP COMPLETES WITH NATIONAL MAP ACCURACY STANDARDS  
FOR SALE BY U.S. GEOLOGICAL SURVEY, DENVER, COLORADO 80225 OR WASHINGTON, D.C. 20509  
A REVISION DESCRIBING TOPOGRAPHIC MAPS AND SYMBOLS IS AVAILABLE ON REQUEST

ROAD CLASSIFICATION  
Majority ———  
State Route  
Map 19

LITTLE TURKEY PARK, N. MEX.  
N29°07'S—108°15'W  
1964

AMS 4100 11 2016-12-01 11:00:00



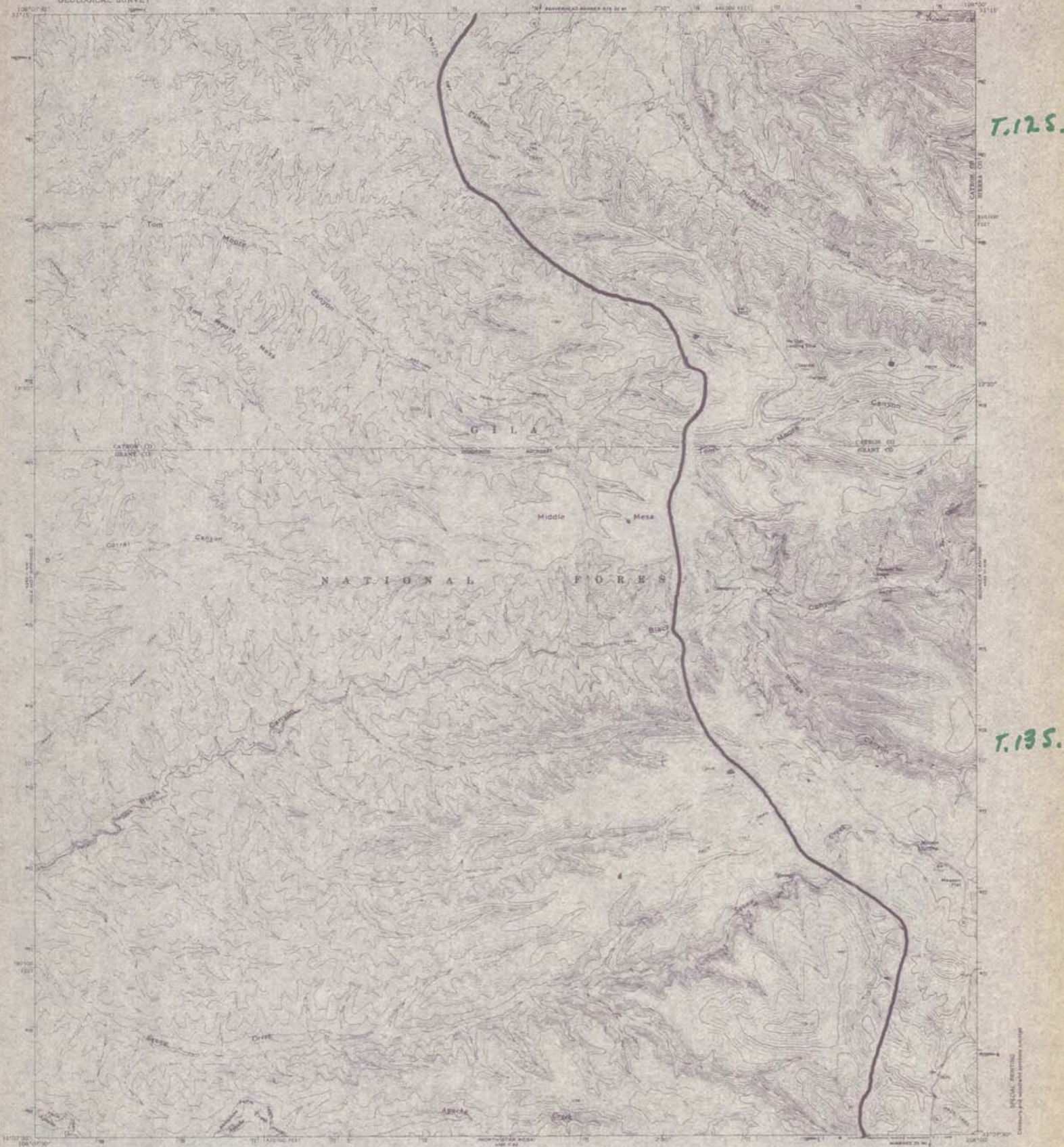




# GILA WILDERNESS

UNITED STATES  
DEPARTMENT OF THE INTERIOR  
GEOLOGICAL SURVEY

MIDDLE MESA QUADRANGLE  
NEW MEXICO  
7.5 MINUTE SERIES (TOPOGRAPHIC)



Mapes, edited, and submitted by the Geological Survey by USGS and USGS/USGS.

Topography is photogrammetrically derived from aerial photography taken 1964-1966 (USGS 1966).

Hydrographic information is from the American Indian 1:50,000-foot grid based on New Mexico topographic system and data.

1:50,000-meter Universal Transverse Mercator grid zone 12N, 12E, 12F, 12G, 12H, 12I, 12J, 12K, 12L, 12M, 12N, 12O, 12P, 12Q, 12R, 12S, 12T, 12U, 12V, 12W, 12X, 12Y, 12Z, 12AA, 12AB, 12AC, 12AD, 12AE, 12AF, 12AG, 12AH, 12AI, 12AJ, 12AK, 12AL, 12AM, 12AN, 12AO, 12AP, 12AQ, 12AR, 12AS, 12AT, 12AU, 12AV, 12AW, 12AX, 12AY, 12AZ, 12BA, 12BB, 12BC, 12BD, 12BE, 12BF, 12BG, 12BH, 12BI, 12BJ, 12BK, 12BL, 12BM, 12BN, 12BO, 12BP, 12BQ, 12BR, 12BS, 12BT, 12BU, 12BV, 12BW, 12BX, 12BY, 12BZ, 12CA, 12CB, 12CC, 12CD, 12CE, 12CF, 12CG, 12CH, 12CI, 12CJ, 12CK, 12CL, 12CM, 12CN, 12CO, 12CP, 12CQ, 12CR, 12CS, 12CT, 12CU, 12CV, 12CW, 12CX, 12CY, 12CZ, 12DA, 12DB, 12DC, 12DD, 12DE, 12DF, 12DG, 12DH, 12DI, 12DJ, 12DK, 12DL, 12DM, 12DN, 12DO, 12DP, 12DQ, 12DR, 12DS, 12DT, 12DU, 12DV, 12DW, 12DX, 12DY, 12DZ, 12EA, 12EB, 12EC, 12ED, 12EE, 12EF, 12EG, 12EH, 12EI, 12EJ, 12EK, 12EL, 12EM, 12EN, 12EO, 12EP, 12EQ, 12ER, 12ES, 12ET, 12EU, 12EV, 12EW, 12EX, 12EY, 12EZ, 12FA, 12FB, 12FC, 12FD, 12FE, 12FF, 12FG, 12FH, 12FI, 12FJ, 12FK, 12FL, 12FM, 12FN, 12FO, 12FP, 12FQ, 12FR, 12FS, 12FT, 12FU, 12FV, 12FW, 12FX, 12FY, 12FZ, 12GA, 12GB, 12GC, 12GD, 12GE, 12GF, 12GG, 12GH, 12GI, 12GJ, 12GK, 12GL, 12GM, 12GN, 12GO, 12GP, 12GQ, 12GR, 12GS, 12GT, 12GU, 12GV, 12GW, 12GX, 12GY, 12GZ, 12HA, 12HB, 12HC, 12HD, 12HE, 12HF, 12HG, 12HH, 12HI, 12HJ, 12HK, 12HL, 12HM, 12HN, 12HO, 12HP, 12HQ, 12HR, 12HS, 12HT, 12HU, 12HV, 12HW, 12HX, 12HY, 12HZ, 12IA, 12IB, 12IC, 12ID, 12IE, 12IF, 12IG, 12IH, 12II, 12IJ, 12IK, 12IL, 12IM, 12IN, 12IO, 12IP, 12IQ, 12IR, 12IS, 12IT, 12IU, 12IV, 12IW, 12IX, 12IY, 12IZ, 12JA, 12JB, 12JC, 12JD, 12JE, 12JF, 12JG, 12JH, 12JI, 12JJ, 12JK, 12JL, 12JM, 12JN, 12JO, 12JP, 12JQ, 12JR, 12JS, 12JT, 12JU, 12JV, 12JW, 12JX, 12JY, 12JZ, 12KA, 12KB, 12KC, 12KD, 12KE, 12KF, 12KG, 12KH, 12KI, 12KJ, 12KK, 12KL, 12KM, 12KN, 12KO, 12KP, 12KQ, 12KR, 12KS, 12KT, 12KU, 12KV, 12KW, 12KX, 12KY, 12KZ, 12LA, 12LB, 12LC, 12LD, 12LE, 12LF, 12LG, 12LH, 12LI, 12LJ, 12LK, 12LL, 12LM, 12LN, 12LO, 12LP, 12LQ, 12LR, 12LS, 12LT, 12LU, 12LV, 12LW, 12LX, 12LY, 12LZ, 12MA, 12MB, 12MC, 12MD, 12ME, 12MF, 12MG, 12MH, 12MI, 12MJ, 12MK, 12ML, 12MN, 12MO, 12MP, 12MQ, 12MR, 12MS, 12MT, 12MU, 12MV, 12MW, 12MX, 12MY, 12MZ, 12NA, 12NB, 12NC, 12ND, 12NE, 12NF, 12NG, 12NH, 12NI, 12NJ, 12NK, 12NL, 12NM, 12NN, 12NO, 12NP, 12NQ, 12NR, 12NS, 12NT, 12NU, 12NV, 12NW, 12NX, 12NY, 12NZ, 12OA, 12OB, 12OC, 12OD, 12OE, 12OF, 12OG, 12OH, 12OI, 12OJ, 12OK, 12OL, 12OM, 12ON, 12OO, 12OP, 12OQ, 12OR, 12OS, 12OT, 12OU, 12OV, 12OW, 12OX, 12OY, 12OZ, 12PA, 12PB, 12PC, 12PD, 12PE, 12PF, 12PG, 12PH, 12PI, 12PJ, 12PK, 12PL, 12PM, 12PN, 12PO, 12PP, 12PQ, 12PR, 12PS, 12PT, 12PU, 12PV, 12PW, 12PX, 12PY, 12PZ, 12QA, 12QB, 12QC, 12QD, 12QE, 12QF, 12QG, 12QH, 12QI, 12QJ, 12QK, 12QL, 12QM, 12QN, 12QO, 12QP, 12QQ, 12QR, 12QS, 12QT, 12QU, 12QV, 12QW, 12QX, 12QY, 12QZ, 12RA, 12RB, 12RC, 12RD, 12RE, 12RF, 12RG, 12RH, 12RI, 12RJ, 12RK, 12RL, 12RM, 12RN, 12RO, 12RP, 12RQ, 12RR, 12RS, 12RT, 12RU, 12RV, 12RW, 12RX, 12RY, 12RZ, 12SA, 12SB, 12SC, 12SD, 12SE, 12SF, 12SG, 12SH, 12SI, 12SJ, 12SK, 12SL, 12SM, 12SN, 12SO, 12SP, 12SQ, 12SR, 12SS, 12ST, 12SU, 12SV, 12SW, 12SX, 12SY, 12SZ, 12TA, 12TB, 12TC, 12TD, 12TE, 12TF, 12TG, 12TH, 12TI, 12TJ, 12TK, 12TL, 12TM, 12TN, 12TO, 12TP, 12TQ, 12TR, 12TS, 12TT, 12TU, 12TV, 12TW, 12TX, 12TY, 12TZ, 12UA, 12UB, 12UC, 12UD, 12UE, 12UF, 12UG, 12UH, 12UI, 12UJ, 12UK, 12UL, 12UM, 12UN, 12UO, 12UP, 12UQ, 12UR, 12US, 12UT, 12UU, 12UV, 12UW, 12UX, 12UY, 12UZ, 12VA, 12VB, 12VC, 12VD, 12VE, 12VF, 12VG, 12VH, 12VI, 12VJ, 12VK, 12VL, 12VM, 12VN, 12VO, 12VP, 12VQ, 12VR, 12VS, 12VT, 12VU, 12VV, 12VW, 12VX, 12VY, 12VZ, 12WA, 12WB, 12WC, 12WD, 12WE, 12WF, 12WG, 12WH, 12WI, 12WJ, 12WK, 12WL, 12WM, 12WN, 12WO, 12WP, 12WQ, 12WR, 12WS, 12WT, 12WU, 12WV, 12WW, 12WX, 12WY, 12WZ, 12XA, 12XB, 12XC, 12XD, 12XE, 12XF, 12XG, 12XH, 12XI, 12XJ, 12XK, 12XL, 12XM, 12XN, 12XO, 12XP, 12XQ, 12XR, 12XS, 12XT, 12XU, 12XV, 12XW, 12XX, 12XY, 12XZ, 12YA, 12YB, 12YC, 12YD, 12YE, 12YF, 12YG, 12YH, 12YI, 12YJ, 12YK, 12YL, 12YM, 12YN, 12YO, 12YP, 12YQ, 12YR, 12YS, 12YT, 12YU, 12YV, 12YW, 12YX, 12YY, 12YZ, 12ZA, 12ZB, 12ZC, 12ZD, 12ZE, 12ZF, 12ZG, 12ZH, 12ZI, 12ZJ, 12ZK, 12ZL, 12ZM, 12ZN, 12ZO, 12ZP, 12ZQ, 12ZR, 12ZS, 12ZT, 12ZU, 12ZV, 12ZW, 12ZX, 12ZY, 12ZZ, 12AA, 12AB, 12AC, 12AD, 12AE, 12AF, 12AG, 12AH, 12AI, 12AJ, 12AK, 12AL, 12AM, 12AN, 12AO, 12AP, 12AQ, 12AR, 12AS, 12AT, 12AU, 12AV, 12AW, 12AX, 12AY, 12AZ, 12BA, 12BB, 12BC, 12BD, 12BE, 12BF, 12BG, 12BH, 12BI, 12BJ, 12BK, 12BL, 12BM, 12BN, 12BO, 12BP, 12BQ, 12BR, 12BS, 12BT, 12BU, 12BV, 12BW, 12BX, 12BY, 12BZ, 12CA, 12CB, 12CC, 12CD, 12CE, 12CF, 12CG, 12CH, 12CI, 12CJ, 12CK, 12CL, 12CM, 12CN, 12CO, 12CP, 12CQ, 12CR, 12CS, 12CT, 12CU, 12CV, 12

R. 12W.

SCALE 1:50,000

0 100 200 300 400 500 600 700 800 900 1000

FEET

0 100 200 300 400 500 600 700 800 900 1000

METERS

CONTOUR INTERVAL 40 FEET

DATA BY: [illegible]

DATE: [illegible]

PROJECT: [illegible]

MAP NO. [illegible]

1:50,000

THIS MAP COMPLIES WITH NATIONAL MAP ACCURACY STANDARDS  
FOR SALE BY U.S. GEOLOGICAL SURVEY, DENVER, COLORADO 80225 OR WASHINGTON, D.C. 20542  
A FOLDER DESCRIBING TOPOGRAPHIC MAPS AND SYMBOLS IS AVAILABLE ON REQUEST

ROAD CLASSIFICATION **R. 11 W**

Map 21

MIDDLE MESA, N. MEX.

1999b).

来源: 作者自拟。注: 表中——表示资料不详。资料来源: 作者自拟。



NORTH STAR MESA QUADRANGLE  
NEW MEXICO--GRANT CO  
7.5 MINUTE SERIES (TOPOGRAPHIC)



T. 155.

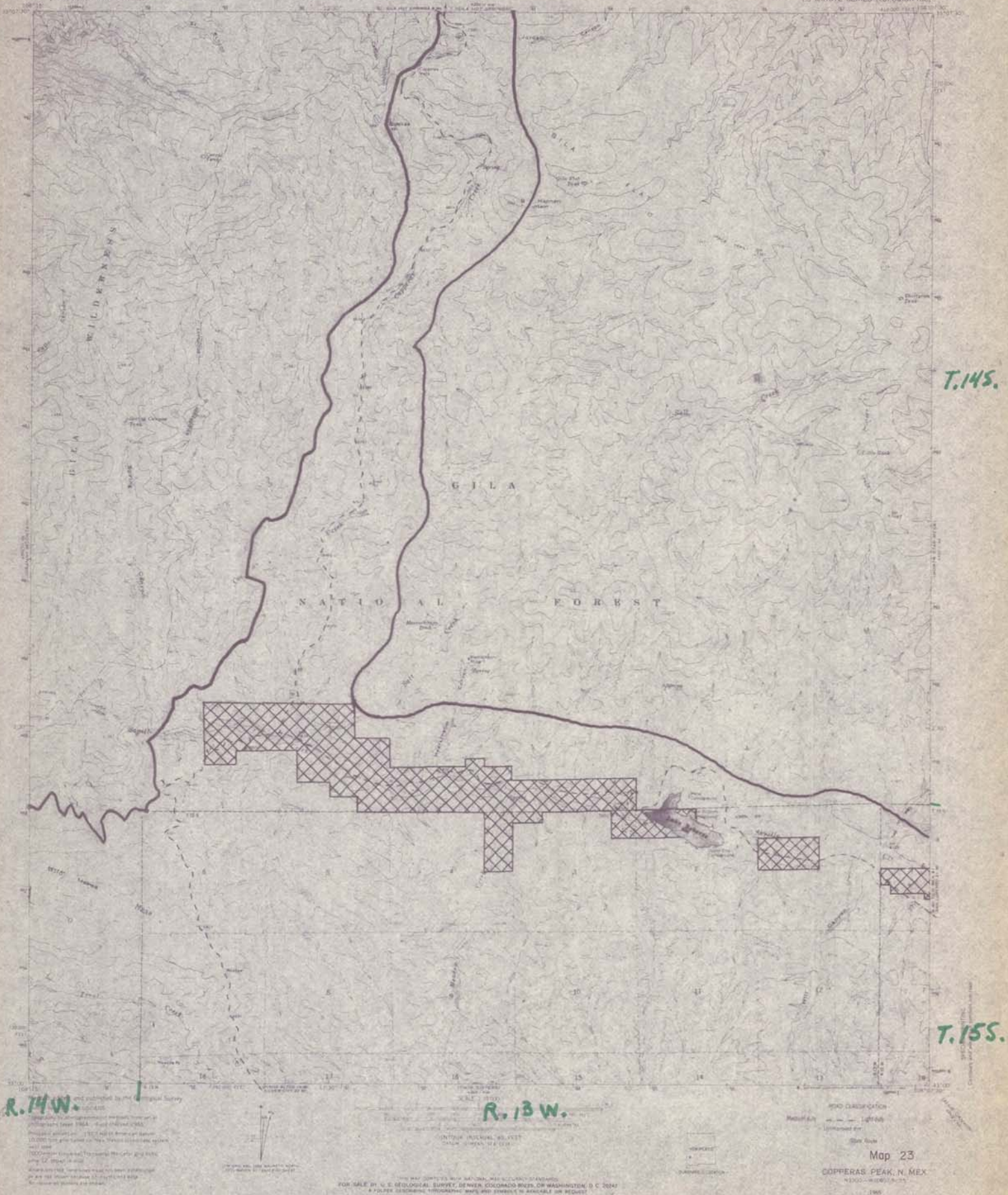
ROAD CLASSIFICATION  
Main thru ~~1~~ **R** **H** **W**  
State Route  
Map 22  
NORTH STAR MESA N. ME.  
N2300 - N10800 - 7-5  
1965  
AHS 4301 11 12 500000 1961



## GILA WILDERNESS

UNITED STATES  
DEPARTMENT OF THE INTERIOR  
GEOLOGICAL SURVEY

COPPERAS PEAK QUADRANGLE  
NEW MEXICO--GRANT CO.  
7.5 MINUTE SERIES (TOPOGRAPHIC)



T. 145.

T. 155.

R. 14 W.

R. 13 W.

Map 23

COPPERAS PEAK, N. MEX.

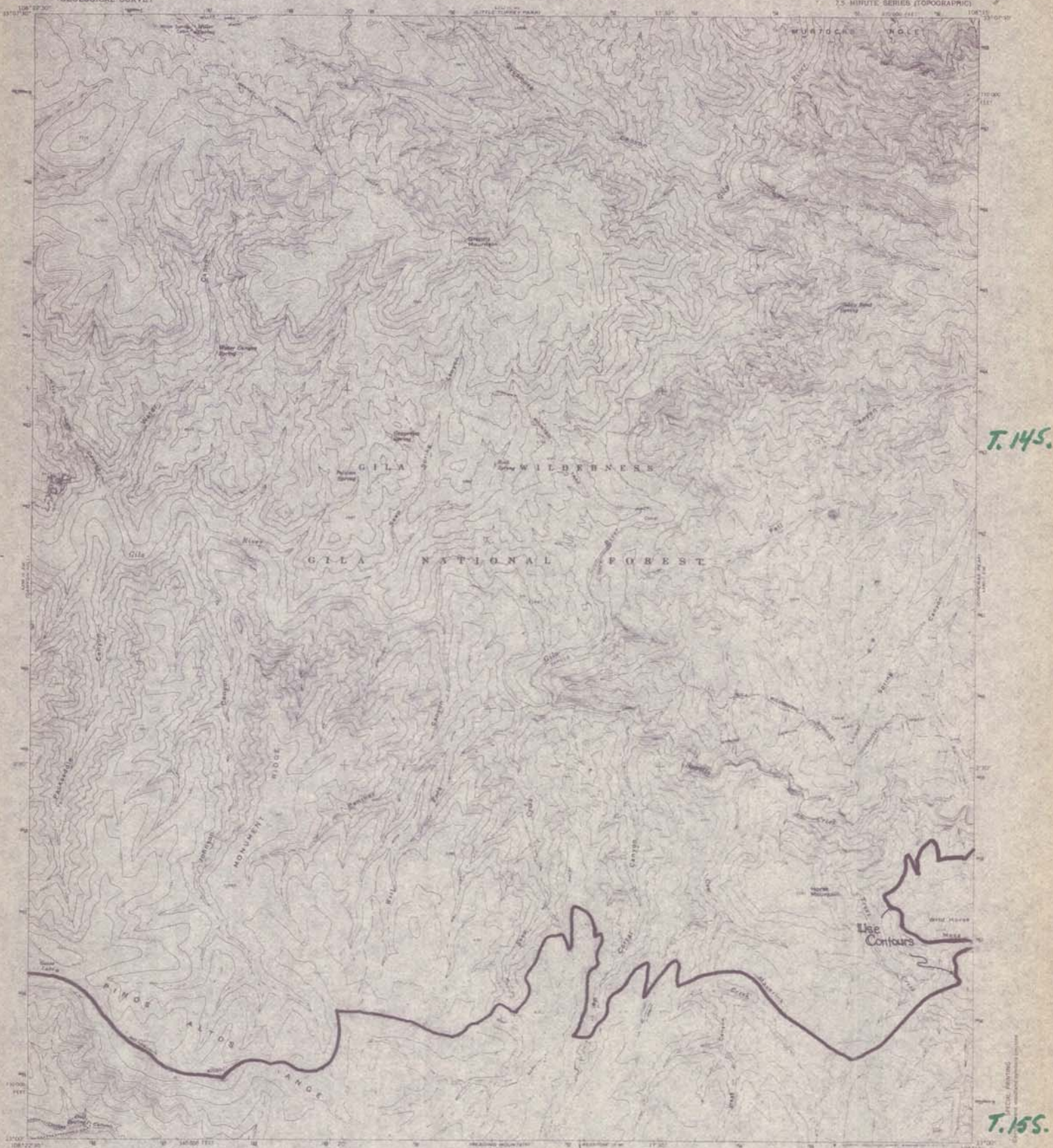
1999, 2000, 2001, 2002, 2003, 2004, 2005, 2006, 2007, 2008, 2009, 2010, 2011, 2012, 2013, 2014, 2015, 2016, 2017, 2018, 2019, 2020, 2021, 2022, 2023, 2024, 2025, 2026, 2027, 2028, 2029, 2030, 2031, 2032, 2033, 2034, 2035, 2036, 2037, 2038, 2039, 2040, 2041, 2042, 2043, 2044, 2045, 2046, 2047, 2048, 2049, 2050, 2051, 2052, 2053, 2054, 2055, 2056, 2057, 2058, 2059, 2060, 2061, 2062, 2063, 2064, 2065, 2066, 2067, 2068, 2069, 2070, 2071, 2072, 2073, 2074, 2075, 2076, 2077, 2078, 2079, 2080, 2081, 2082, 2083, 2084, 2085, 2086, 2087, 2088, 2089, 2090, 2091, 2092, 2093, 2094, 2095, 2096, 2097, 2098, 2099, 2100, 2101, 2102, 2103, 2104, 2105, 2106, 2107, 2108, 2109, 2110, 2111, 2112, 2113, 2114, 2115, 2116, 2117, 2118, 2119, 2120, 2121, 2122, 2123, 2124, 2125, 2126, 2127, 2128, 2129, 2130, 2131, 2132, 2133, 2134, 2135, 2136, 2137, 2138, 2139, 2140, 2141, 2142, 2143, 2144, 2145, 2146, 2147, 2148, 2149, 2150, 2151, 2152, 2153, 2154, 2155, 2156, 2157, 2158, 2159, 2160, 2161, 2162, 2163, 2164, 2165, 2166, 2167, 2168, 2169, 2170, 2171, 2172, 2173, 2174, 2175, 2176, 2177, 2178, 2179, 2180, 2181, 2182, 2183, 2184, 2185, 2186, 2187, 2188, 2189, 2190, 2191, 2192, 2193, 2194, 2195, 2196, 2197, 2198, 2199, 2200, 2201, 2202, 2203, 2204, 2205, 2206, 2207, 2208, 2209, 2210, 2211, 2212, 2213, 2214, 2215, 2216, 2217, 2218, 2219, 2220, 2221, 2222, 2223, 2224, 2225, 2226, 2227, 2228, 2229, 2230, 2231, 2232, 2233, 2234, 2235, 2236, 2237, 2238, 2239, 2240, 2241, 2242, 2243, 2244, 2245, 2246, 2247, 2248, 2249, 2250, 2251, 2252, 2253, 2254, 2255, 2256, 2257, 2258, 2259, 2260, 2261, 2262, 2263, 2264, 2265, 2266, 2267, 2268, 2269, 2270, 2271, 2272, 2273, 2274, 2275, 2276, 2277, 2278, 2279, 2280, 2281, 2282, 2283, 2284, 2285, 2286, 2287, 2288, 2289, 2290, 2291, 2292, 2293, 2294, 2295, 2296, 2297, 2298, 2299, 2300, 2301, 2302, 2303, 2304, 2305, 2306, 2307, 2308, 2309, 2310, 2311, 2312, 2313, 2314, 2315, 2316, 2317, 2318, 2319, 2320, 2321, 2322, 2323, 2324, 2325, 2326, 2327, 2328, 2329, 2330, 2331, 2332, 2333, 2334, 2335, 2336, 2337, 2338, 2339, 2340, 2341, 2342, 2343, 2344, 2345, 2346, 2347, 2348, 2349, 2350, 2351, 2352, 2353, 2354, 2355, 2356, 2357, 2358, 2359, 2360, 2361, 2362, 2363, 2364, 2365, 2366, 2367, 2368, 2369, 2370, 2371, 2372, 2373, 2374, 2375, 2376, 2377, 2378, 2379, 2380, 2381, 2382, 2383, 2384, 2385, 2386, 2387, 2388, 2389, 2390, 2391, 2392, 2393, 2394, 2395, 2396, 2397, 2398, 2399, 2400, 2401, 2402, 2403, 2404, 2405, 2406, 2407, 2408, 2409, 2410, 2411, 2412, 2413, 2414, 2415, 2416, 2417, 2418, 2419, 2420, 2421, 2422, 2423, 2424, 2425, 2426, 2427, 2428, 2429, 2430, 2431, 2432, 2433, 2434, 2435, 2436, 2437, 2438, 2439, 2440, 2441, 2442, 2443, 2444, 2445, 2446, 2447, 2448, 2449, 2450, 2451, 2452, 2453, 2454, 2455, 2456, 2457, 2458, 2459, 2460, 2461, 2462, 2463, 2464, 2465, 2466, 2467, 2468, 2469, 2470, 2471, 2472, 2473, 2474, 2475, 2476, 2477, 2478, 2479, 2480, 2481, 2482, 2483, 2484, 2485, 2486, 2487, 2488, 2489, 2490, 2491, 2492, 2493, 2494, 2495, 2496, 2497, 2498, 2499, 2500, 2501, 2502, 2503, 2504, 2505, 2506, 2507, 2508, 2509, 2510, 2511, 2512, 2513, 2514, 2515, 2516, 2517, 2518, 2519, 2520, 2521, 2522, 2523, 2524, 2525, 2526, 2527, 2528, 2529, 2530, 2531, 2532, 2533, 2534, 2535, 2536, 2537, 2538, 2539, 2540, 2541, 2542, 2543, 2544, 2545, 2546, 2547, 2548, 2549, 2550, 2551, 2552, 2553, 2554, 2555, 2556, 2557, 2558, 2559, 2560, 2561, 2562, 2563, 2564, 2565, 2566, 2567, 2568, 2569, 2570, 2571, 2572, 2573, 2574, 2575, 2576, 2577, 2578, 2579, 2580, 2581, 2582, 2583, 2584, 2585, 2586, 2587, 2588, 2589, 2590, 2591, 2592, 2593, 2594, 2595, 2596, 2597, 2598, 2599, 2600, 2601, 2602, 2603, 2604, 2605, 2606, 2607, 2608, 2609, 2610, 2611, 2612, 2613, 2614, 2615, 2616, 2617, 2618, 2619, 2620, 2621, 2622, 2623, 2624, 2625, 2626, 2627, 2628, 2629, 2630, 2631, 2632, 2633, 2634, 2635, 2636, 2637, 2638, 2639, 2640, 2641, 2642, 2643, 2644, 2645, 2646, 2647, 2648, 2649, 2650, 2651, 2652, 2653, 2654, 2655, 2656, 2657, 2658, 2659, 2660, 2661, 2662, 2663, 2664, 2665, 2666, 2667, 2668, 2669, 2670, 2671, 2672, 2673, 2674, 2675, 2676, 2677, 2678, 2679, 2680, 26

4482 • J. Neurosci., July 26, 2006 • 26(30):4475–4482



UNITED STATES  
DEPARTMENT OF THE INTERIOR  
GEOLOGICAL SURVEY

GRANNY MOUNTAIN QUADRANGLE  
NEW MEXICO-GRANT CO.  
7.5-MINUTE SERIES (TOPOGRAPHIC)



T. 145.

T. 155.

**R.I.S.W.**

[illegible]

R. 14 W.

Map 24

GRANBY MOUNTAIN, N. MEX.  
N. 100°—W. 100° 1/2 S.

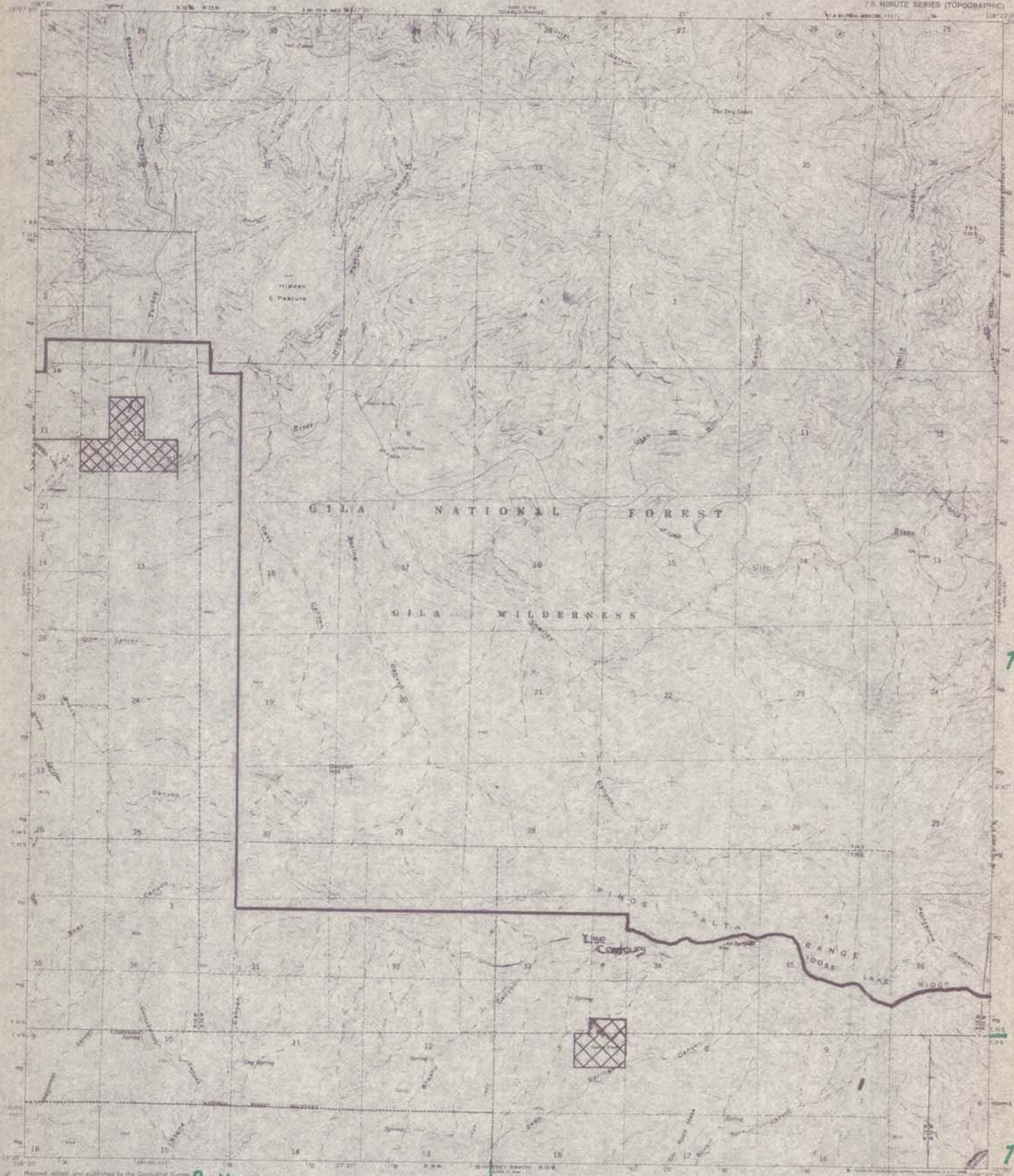
1995



# GILA WILDERNESS

UNITED STATES  
DEPARTMENT OF THE INTERIOR  
GEOLOGICAL SURVEY

CANYON HILL QUADRANGLE  
NEW MEXICO—GRANT CO.  
7.5 MINUTE SERIES (TOPOGRAPHIC)



Map, edited, and published by the Geological Survey  
Canyon to 10000 and 15000  
Photographs by photogrammetric methods from aerial  
photographs taken 1944-1945. Scale 1:50,000.  
Photographic coordinates: 1927 Mean Airphoto System  
(10,000-foot grid based on New Mexico coordinate system)  
Base date  
1000-meter contour interval. Elevation of 1000 feet and  
above 12,000 feet in 2000-foot intervals.  
Where contour lines have been added or  
deleted, they are shown with dashed lines.

Scale 1:50,000  
CONTOUR INTERVAL 50 FEET  
DATUM: MEAN SEA LEVEL

THIS MAP COMPLETES WITH NATIONAL MAP ACTIVITY A LANDSCAPE  
FOR SALE BY U.S. GEOLOGICAL SURVEY, DENVER, COLORADO 80225 OR WASHINGTON, D.C. 20542  
A FOLDER DESCRIBING TOPOGRAPHIC MAPS AND SYMBOLS IS AVAILABLE ON REQUEST

R.16W



ROAD CLASSIFICATION

Unimproved and

Map 25

CANYON HILL, N. MEX.

1:50,000—1912/23/24

1968

PHS ADD. 01-54—SERIES VII

T.10S.

T.11S.

PH



UNITED STATES  
DEPARTMENT OF THE INTERIOR  
GEOLOGICAL SURVEY

CANTEEN CANYON QUADRANGLE  
NEW MEXICO—GRANT CO.  
7.5 MINUTE SERIES (TOPOGRAPHIC)

T. 14 S.  
T. 15 S.

R. 17w.

R. 16 W

Map 26  
CANTEEN CANYON, N. MEX.  
1890-1900-1910-1920  
1930  
AND MORE TO BE KNOWN