

**MT. JEFFERSON WILDERNESS  
ADDITIONS**

**BREITENBUSH HOT SPRINGS SW**

INDEX MAP NUMBER 1

**BREITENBUSH HOT SPRINGS SE**

INDEX MAP NUMBER 2

**MT. JEFFERSON NW**

INDEX MAP NUMBER 4

**MT. JEFFERSON NE**

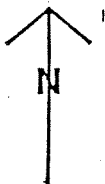
INDEX MAP NUMBER 3

**MT. JEFFERSON SW**

INDEX MAP NUMBER 5

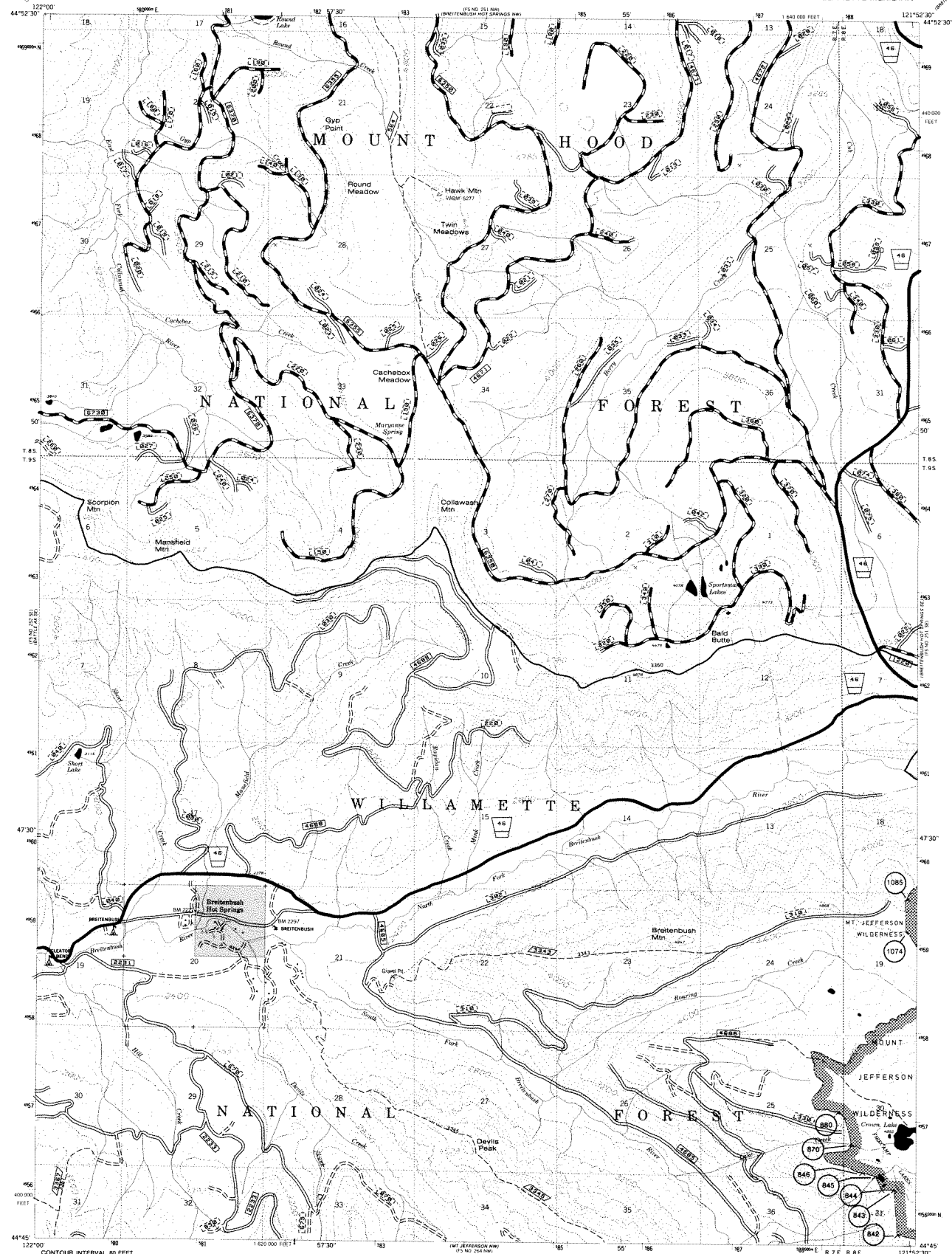
**MT. JEFFERSON SE**

INDEX MAP NUMBER 6









189 RD 252 NE1  
(BATTLE AS NE1)

ITS NO 251 HEL  
HARETTENBUSH - NOT ST



**LEGEND**

|   |  |
|---|--|
|  | WILDERNESS BOUNDARY  |
|  | WILDERNESS BOUNDARY<br>CONTROL POINTS  |
|  | FOREST BOUNDARY  |
|  | NATIONAL, STATE OR<br>PROVINCE BOUNDARY  |
|  | COUNTY BOUNDARY  |
|  | ALIENATED LANDS<br>(PRIVATE, STATE OR<br>NATIONAL PARKS<br>AND MONUMENTS,<br>INDIAN RESERVATIONS,<br>ETC.) |

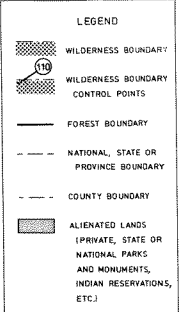
SCALE 1:63,360  
SEPTEMBER 1986

BREITENBUSH HOT SPRINGS SW

INDEX MAP NUMBER 1

UTM GRID AND 1979 MAGNETIC NORTH  
DEVIATION AT CENTER OF SHEET

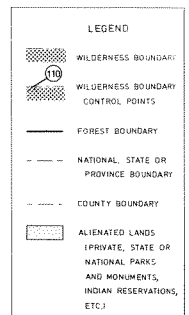
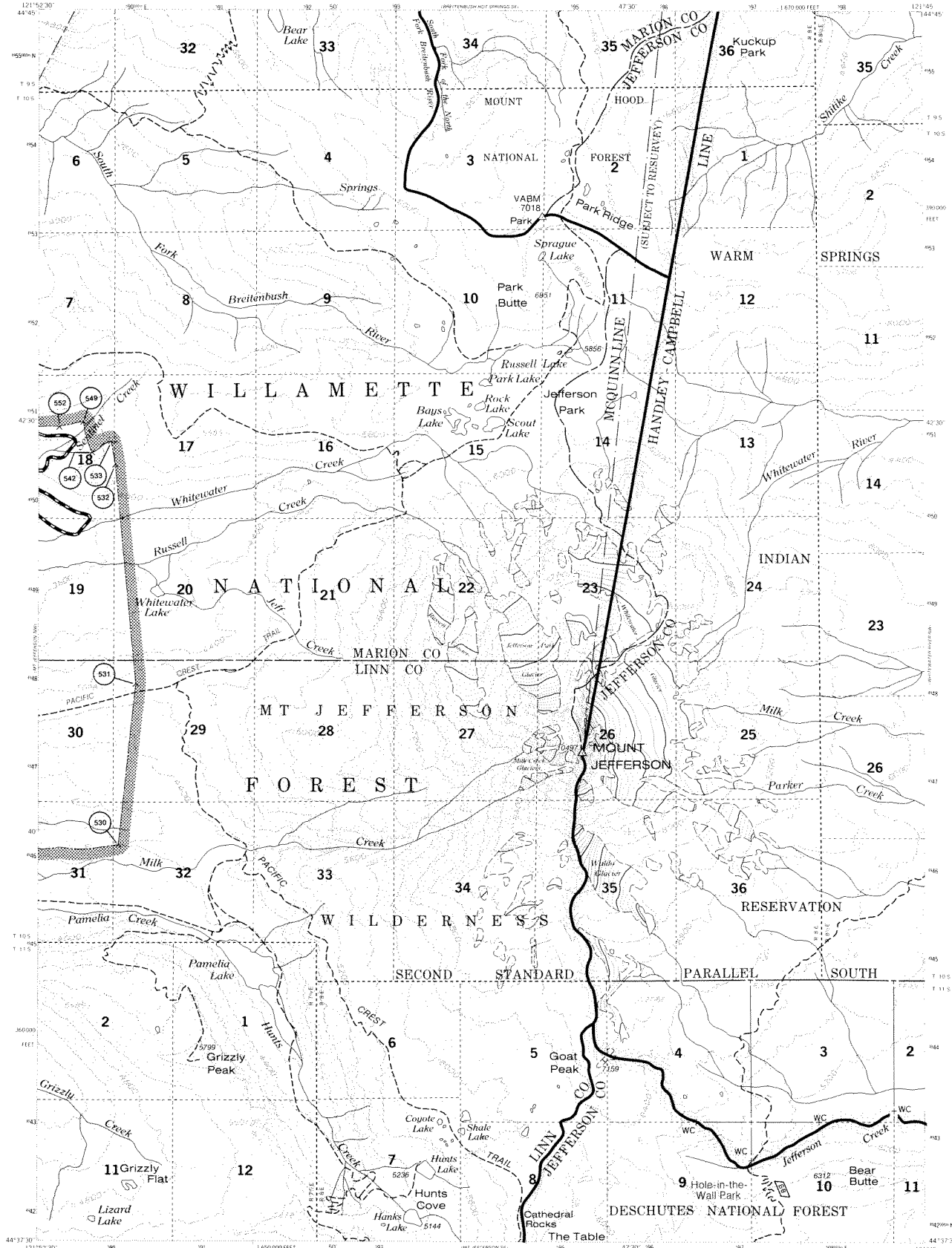
BREITENBUSH HOT SPRINGS SE QUADRANGLE  
JEFFERSON, MARION, AND WASCO COUNTIES, OREGON  
WILLAMETTE MERIDIAN

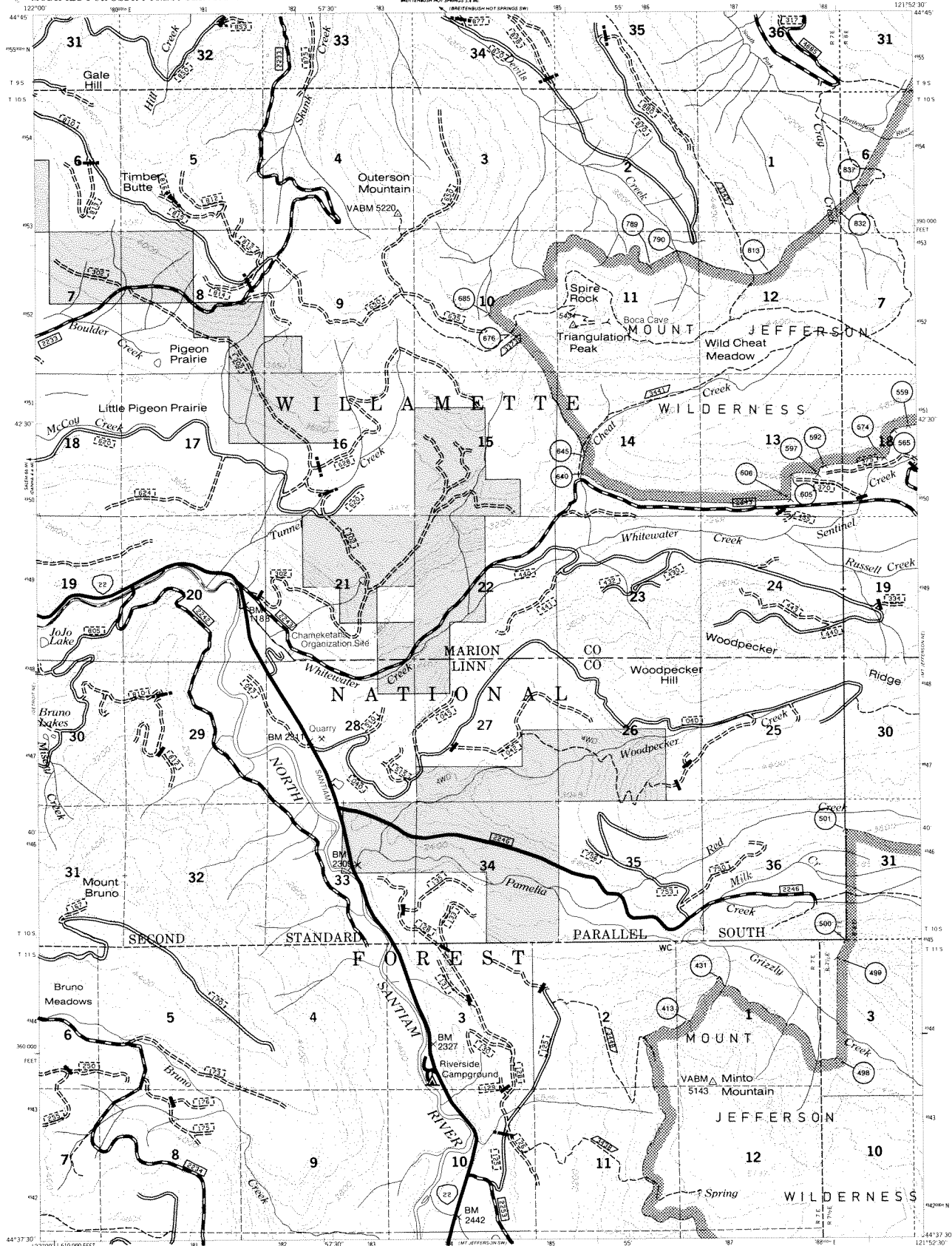


SCALE 1:63,360  
SEPTEMBER 1986

INDEX MAP NUMBER 2

UTM GRID AND 1979 MAGNETIC NORTH  
OF QUATION AT CENTER OF SHEET



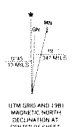


**LEGEND**

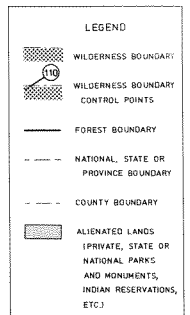
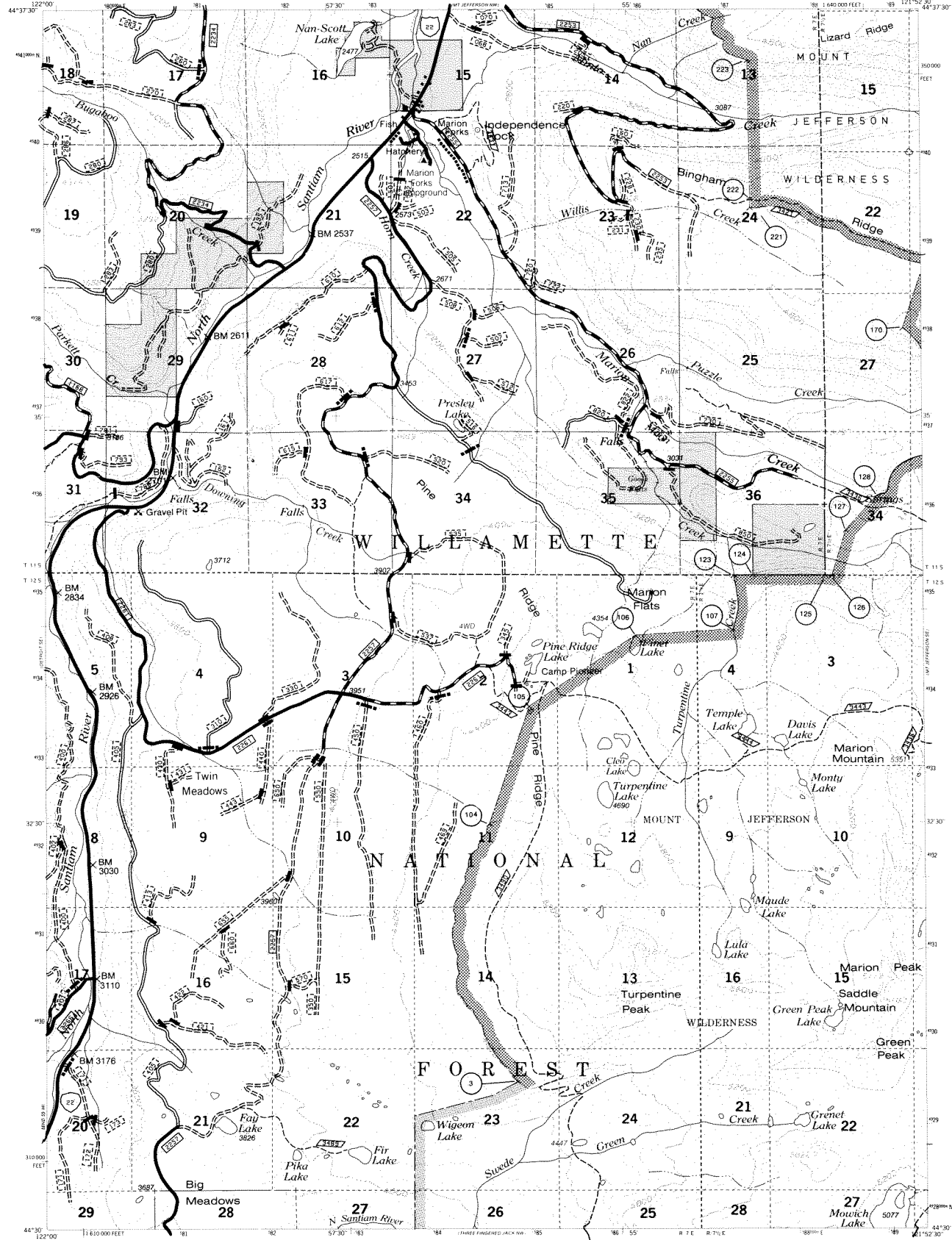
- WILDERNESS BOUNDARY
- WILDERNESS BOUNDARY CONTROL POINTS
- FOREST BOUNDARY
- NATIONAL, STATE OR PROVINCE BOUNDARY
- COUNTY BOUNDARY
- ALIENATED LAND (PRIVATE, STATE OR NATIONAL PARK AND MONUMENTS, INDIAN RESERVATIONS, ETC.)

SCALE 1:63,680  
SEPTEMBER 1986

MT. JEFFERSON NW  
INDEX MAP NUMBER 4

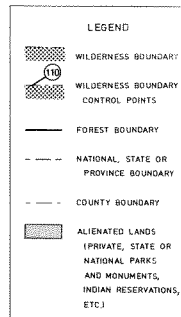
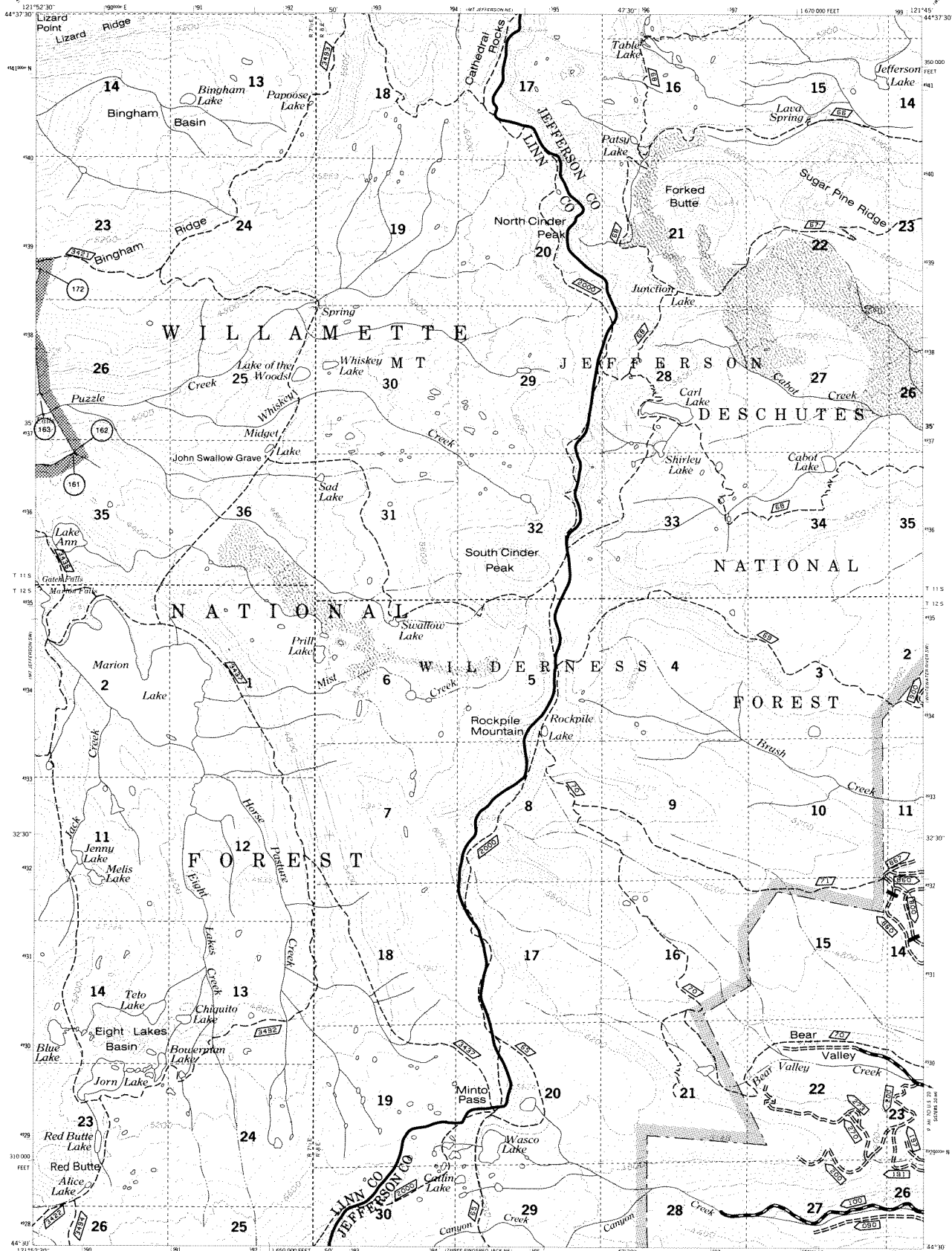


CONTOUR INTERVAL 80 FEET  
DATUM IS MEAN SEA LEVEL



SCALE 1:62,360  
SEPTEMBER 1986

MT. JEFFERSON SW  
INDEX MAP NUMBER 5



SCALE 1:63,360  
SEPTEMBER 1986

MT. JEFFERSON SE  
INDEX MAP NUMBER 6



UTM GRID AND 1981  
MAGNETIC NORTH  
DECLINATION AT  
CENTER OF SHEET