

NATIONAL WILDERNESS PRESERVATION SYSTEM

Hickory Creek Wilderness
Allegheny National Forest

I hereby certify that the legal description and map herewith represent the location of the boundry of the Hickory Creek wilderness on the Allegheny National Forest as covered in the Pennsylvania Wilderness Act of 1984 by the Act of October 30, 1984.

Signed June 1, 2000
Date

Mary Ruth C. C. C. C. C.
Regional Forester

Hickory Creek Wilderness

A tract of land within the Administrative Boundary of the Allegheny National Forest in Warren County, Commonwealth of Pennsylvania and more particularly described as follows:

Beginning at Wilderness Monument #1 on the Warrant line common to Warrants 5245 and 5229;

Thence; southerly for 3500 feet to Wilderness Monument #2 on the Warrant line common to Warrants 3048 and 3049;

Thence, easterly on the before mentioned Warrant line to corner #13 of U.S. Tract 4f;

Thence, S $0^{\circ}32'E$ 1784 ft. to corner #12 of U.S. Tract 4f;

Thence, S $83^{\circ}30'W$ 990 ft. to corner #11 of U.S. Tract 4f;

Thence, S $0^{\circ}32'E$ 1188 ft. to corner #10 of U.S. Tract 4f;

Thence, S $75^{\circ}46'E$ 1018 ft. to corner #9 of U.S. Tract 4f;

Thence, N $89^{\circ}28'E$ 1956 ft. to corner #8 of U.S. Tract 4f;

Thence, N $0^{\circ}01'W$ 975 ft. on the line common to Warrants 3049 and 3017 to Wilderness Monument #3, 100 ft. south of centerline Watson Township road 667;

Thence, easterly, south easterly and easterly for approx. 1.3 miles parallel with Watson Township road 667 and L.R. 61031 to a point 100 ft. west of the centerline of Forest Road 116.

Thence, southerly for .05 miles to a points;

Thence in a generally southwesterly direction for 7.20 miles remaining 100 ft. north of the centerline and parallel to Forest Road 119 to the intersection with East Hickory Creek;

Thence in a generally northwesterly direction for 1.4 miles remaining 100 ft. east of the centerline and parallel to Forest Road 119 to Wilderness Monument #4;

Thence, easterly staying 1300 ft south and parallel with the centerline of Limestone Township Road T317 for .50 miles to Wilderness Monument #5;

Thence, northeasterly and parallel with the centerline of T317 for .50 miles to Wilderness Monument #6;

(Thence, northeasterly and parallel with the centerline of T317 for .60 mile to Wilderness Monument #7

Thence, northwesterly and parallel with the centerline of T317 for .25 miles to Wilderness Monument #8 on line 15-16 of U.S. Tract 4f;

Thence, N $44^{\circ}41'E$ 717 ft. to corner #1 of U.S. Tract 41; common to corner #2 of U.S. Tract 478

Thence, N $45^{\circ}58'W$ 1826 ft. on line 2-3 of U.S. Tract 478 to a point which is 200 ft S $45^{\circ}58'E$ from the centerline of State Road 337;

Thence, northeasterly and parallel to the centerline of State Road 337 to a point on line 4-1 of U.S. Tract 478;

Thence, S $45^{\circ}58'E$ 1981 ft. on line 1-4 of U.S. Tract 478 to corner #1; common to corner #17 of U.S. Tract 41;

Thence, N $45^{\circ}46'E$ 668 ft. to corner #18 of U.S. Tract 41;

Thence, N $43^{\circ}50'W$ 1898 ft. to corner #19 of U.S. Tract 41;

Thence, N $45^{\circ}30'E$ 2178 ft. to corner #20 of U.S. Tract 41;

Thence, N $45^{\circ}40'W$ 453 ft. on line 20-21 of U.S. Tract 41 to a point which is 200 ft S $45^{\circ}40'E$ of the centerline of State Road 337;

Thence, easterly and northeasterly parallel with State Road 337 to a point on the Warrant line common to Warrants 5225 and 5227 on line 5-6 of U.S. Tract 477;

Thence, S $45^{\circ}39'E$ on line 5-6 to corner #5 of U.S. Tract 477 common to corner #22 of U.S. Tract 41;

Thence, S $46^{\circ}03'E$ 758 ft. to corner #23 of U.S. Tract 41;

Thence, S $45^{\circ}24'E$ 1736 ft. to corner #24 of U.S. Tract 41;

Thence, N $52^{\circ}00'E$ 5021 ft. to corner #25 of U.S. Tract 41;

Thence, S $46^{\circ}15'E$ 3575 ft. to corner #26 of U.S. Tract 41 common to corner #3 of U.S. Tract 299b;

Thence, N $51^{\circ}22'E$ 1259 ft. to corner #4 of U.S. Tract 299b;

Thence, N $46^{\circ}45'W$ 1040 ft. to corner #5 of U.S. Tract 299b;

Thence, N $51^{\circ}22'E$ 2684 feet to corner #6 of U.S. Tract 299b;

Thence, N $51^{\circ}22'E$ 1109 ft. to Wilderness Monument #9 on the line common to Warrants 5246 and 5228;

Thence, S $45^{\circ}12'E$ 2770 ft. on line 1-10 of U.S. Tract 299b on the line common to Warrants 5246 and 5228 to corner #1 of U.S. Tract 299b common to corner #28 of U.S. Tract 41;

Thence, S $46^{\circ}12'E$ 2666 ft. on the Warrant line common to Warrants 5245 and 5229 to corner #29 of U.S. Tract 41;

Thence, S $46^{\circ}12'E$ 880 ft. on the line common to Warrants 5245 and 5229 to the place of beginning.

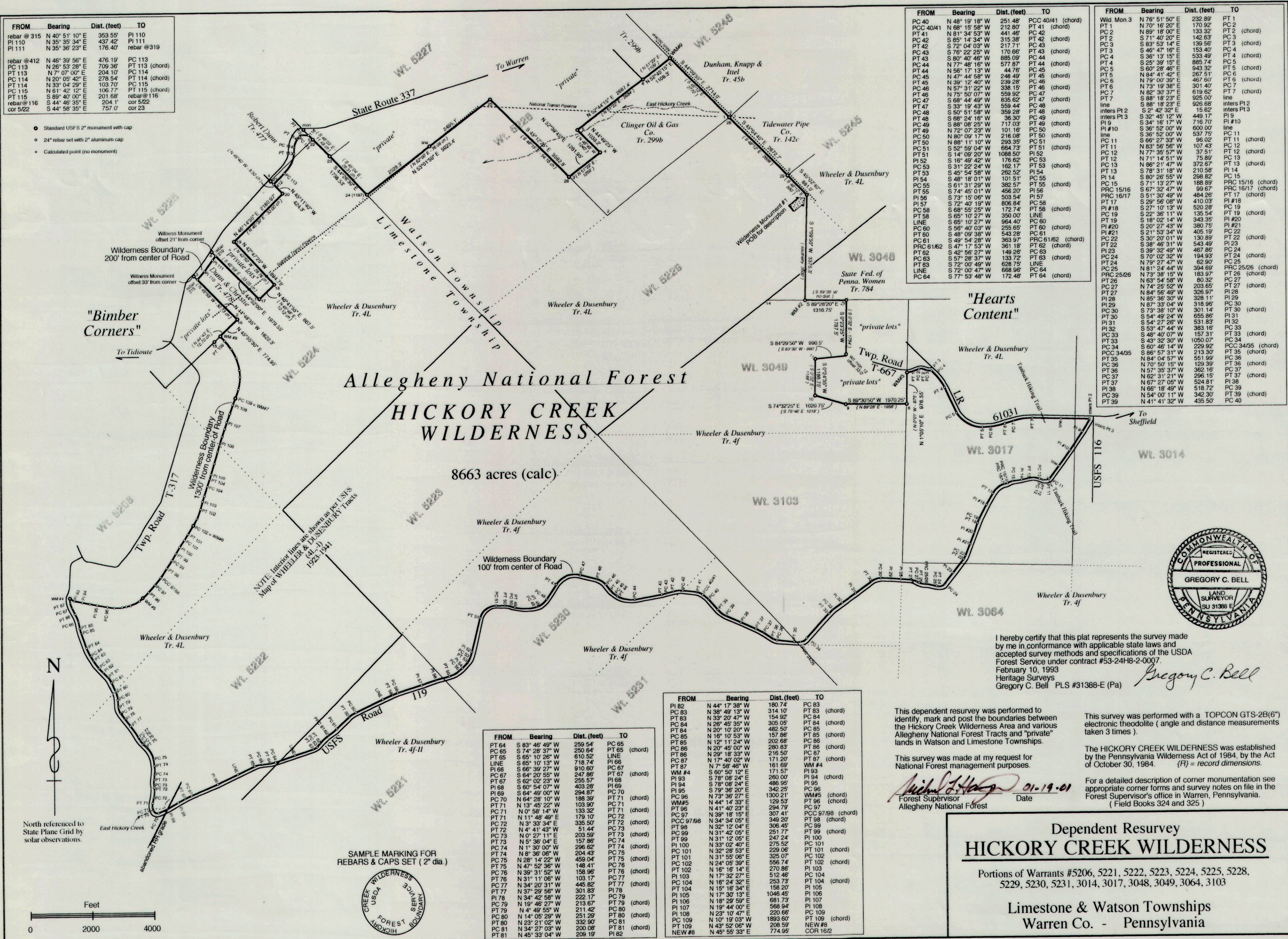
Land: herein described and topographic features referred to are depicted on 7 1/2 minute United States Geological Quadrangle sheets COBBHAM and CHERRY GROVE dated 1966 photorevised 1973.

Monuments referred to as "Wilderness Monuments" in the body of this description were set in the summer of 1985. They were individually recorded in the accompanying field book. Monuments set are 2 1/2" diameter brass cap on a 2 I.D. 36" galvanized iron pipe in a mound of stone. Caps are marked "Wilderness Area Monument", and the corresponding station number noted thereon.

Quadrangle sheets, field book and U.S. Tracts referred to are intended to be an integral part of the legal description. The total area of the Hickory Creek Wilderness is 8570 acres, more or less.

FROM	Bearing	Dist. (feet)	TO
rebar @ 315	N 40° 51' 10" E	353.55	PI 110
PI 110	N 35° 35' 34" E	437.42	rebar @ 319
PI 111	N 36° 36' 23" E	176.40	
rebar @ 412	N 45° 39' 56" E	476.19	PC 113
PC 113	N 26° 53' 28" E	709.36	PT 113 (chord)
PT 113	N 7° 07' 08" E	204.10	PC 114
PC 114	N 20° 05' 42" E	278.54	PT 114 (chord)
PT 114	N 3° 58' 25" E	103.77	PC 115
PC 115	N 61° 42' 12" E	106.77	PT 115 (chord)
PT 115	S 44° 40' 00" E	201.68	rebar @ 116
rebar @ 116	S 89° 38' 35" E	562.92	cor 32
		757.97	

- Standard USFS 2" monument with cap
- 24" rebar set with 2" aluminum cap
- Calculated point (no monument)



I hereby certify that this plat represents the survey made by me in conformance with applicable state laws and accepted survey methods and specifications of the USDA Forest Service under contract #53-24H8-2-0007.
February 10, 1993
Heritage Surveys
Gregory C. Bell PLS #31388-E (Pa)

This dependent resurvey was performed to identify, mark and post the boundaries between the Hickory Creek Wilderness Area and various Allegheny National Forest Tracts and "private" lands in Watson and Limestone Townships.

This survey was made at my request for National Forest management purposes.

This survey was performed with a TOPCON GTS-2B(6") electronic theodolite (angle and distance measurements taken 3 times).

The HICKORY CREEK WILDERNESS was established by the Pennsylvania Wilderness Act of 1984, by the Act of October 30, 1984. {R} = record dimensions.

This survey was made at my request for National Forest management purposes.

Michael L. Hagan 01-19-01
Forest Supervisor Date
Allegheny National Forest

by the Pennsylvania Wilderness Act of 1984, by the Act of October 30, 1984. {R} = record dimensions.

For a detailed description of record monumentation see appropriate corner forms and survey notes on file in the Forest Supervisor's office in Warren, Pennsylvania.
(Field Books 324 and 325)

Dependent Resurvey HICKORY CREEK WILDERNESS

Portions of Warrants #5206, 5221, 5222, 5223, 5224, 5225, 5228, 5229, 5230, 5231, 3014, 3017, 3048, 3049, 3064, 3103

Limestone & Watson Townships
Warren Co. - Pennsylvania