

OSO S.E.

BOULDER RIVER WILDERNESS

INDEX MAP NUMBER 1

GRANITE FALLS N.E.

INDEX MAP NUMBER 4

SILVERTON N.W.

INDEX MAP NUMBER 3

SILVERTON N.E.

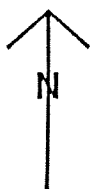
INDEX MAP NUMBER 2

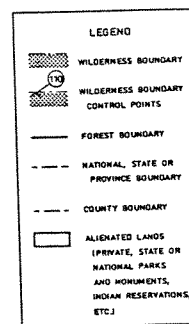
SILVERTON S.W.

INDEX MAP NUMBER 5

SILVERTON S.E.

INDEX MAP NUMBER 6

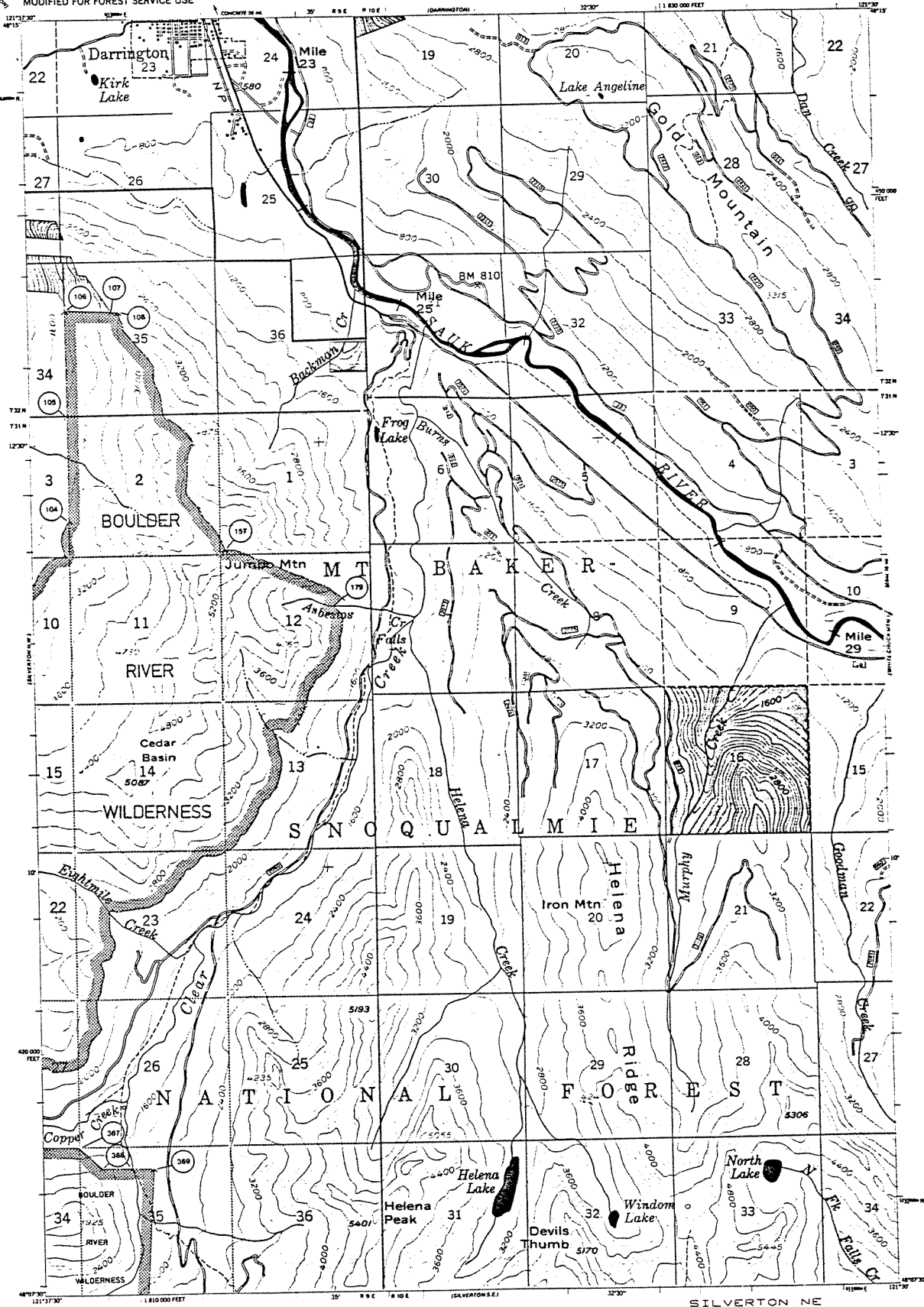




SCALE 1:62,360
SEPTEMBER 1986

OSO SE
INDEX MAP NUMBER 1

Diagram illustrating the geometry of the Earth-Moon system. The Earth's radius is 6370 km, and the Moon's radius is 1740 km. The distance between the centers is 384,400 km. The angle between the Earth's radius and the line connecting the centers is 0.27 degrees. The angle between the Moon's radius and the line connecting the centers is 27.1 degrees.

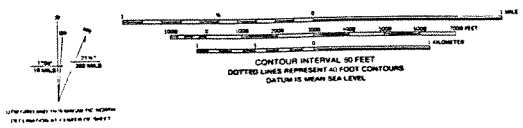


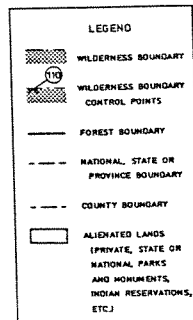
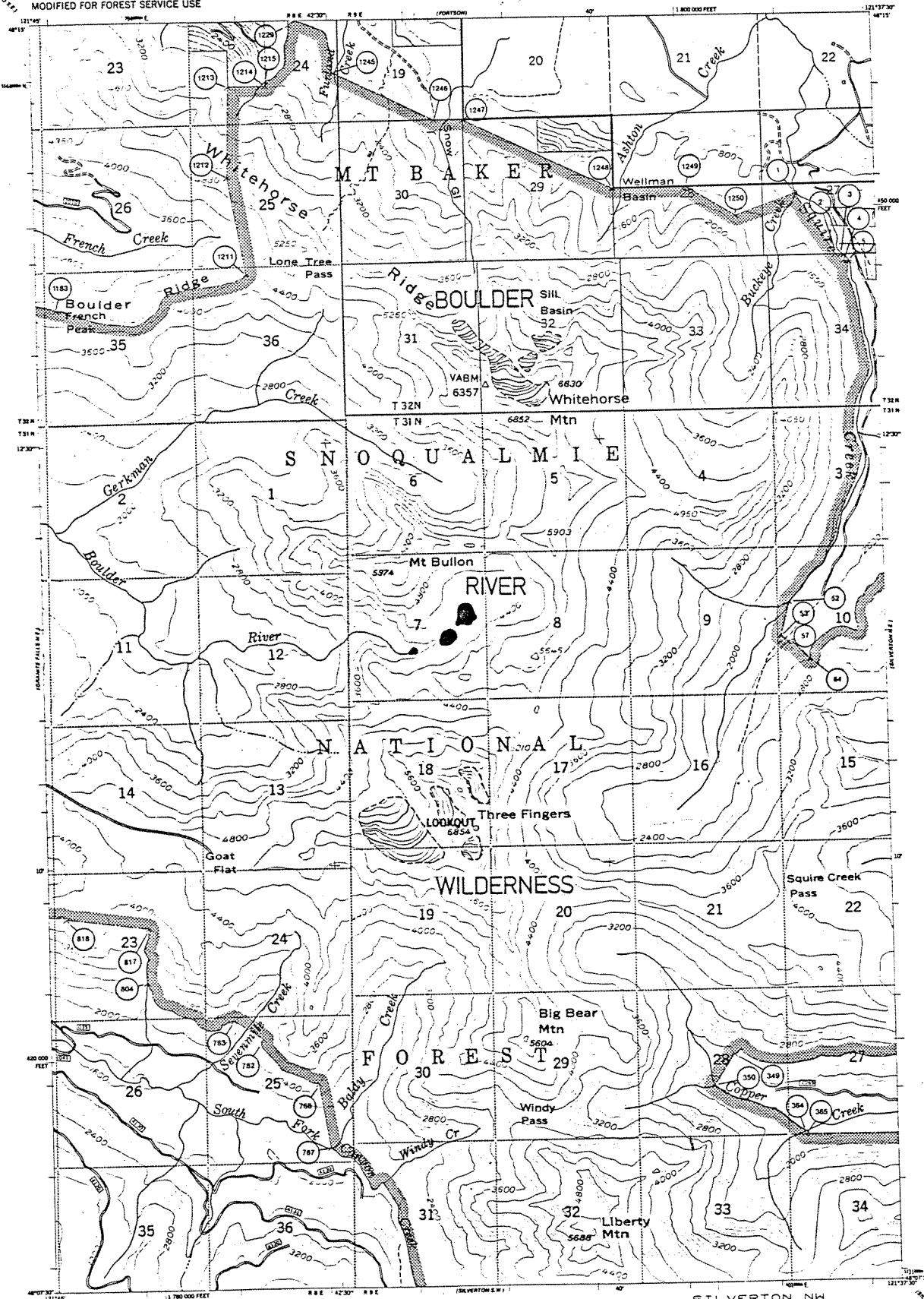
LEGEND

- WILDERNESS BOUNDARY
- WILDERNESS BOUNDARY CONTROL POINTS
- FOREST BOUNDARY
- NATIONAL, STATE OR PROVINCE BOUNDARY
- COUNTY BOUNDARY
- ALIENATED LANDS (PRIVATE, STATE OR NATIONAL PARKS AND MONUMENTS, INDIAN RESERVATIONS, ETC.)

SCALE 1:63,360
SEPTEMBER 1984

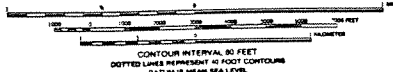
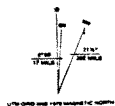
SILVERTON N.E.
INDEX MAP NUMBER 2

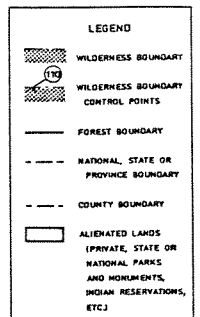
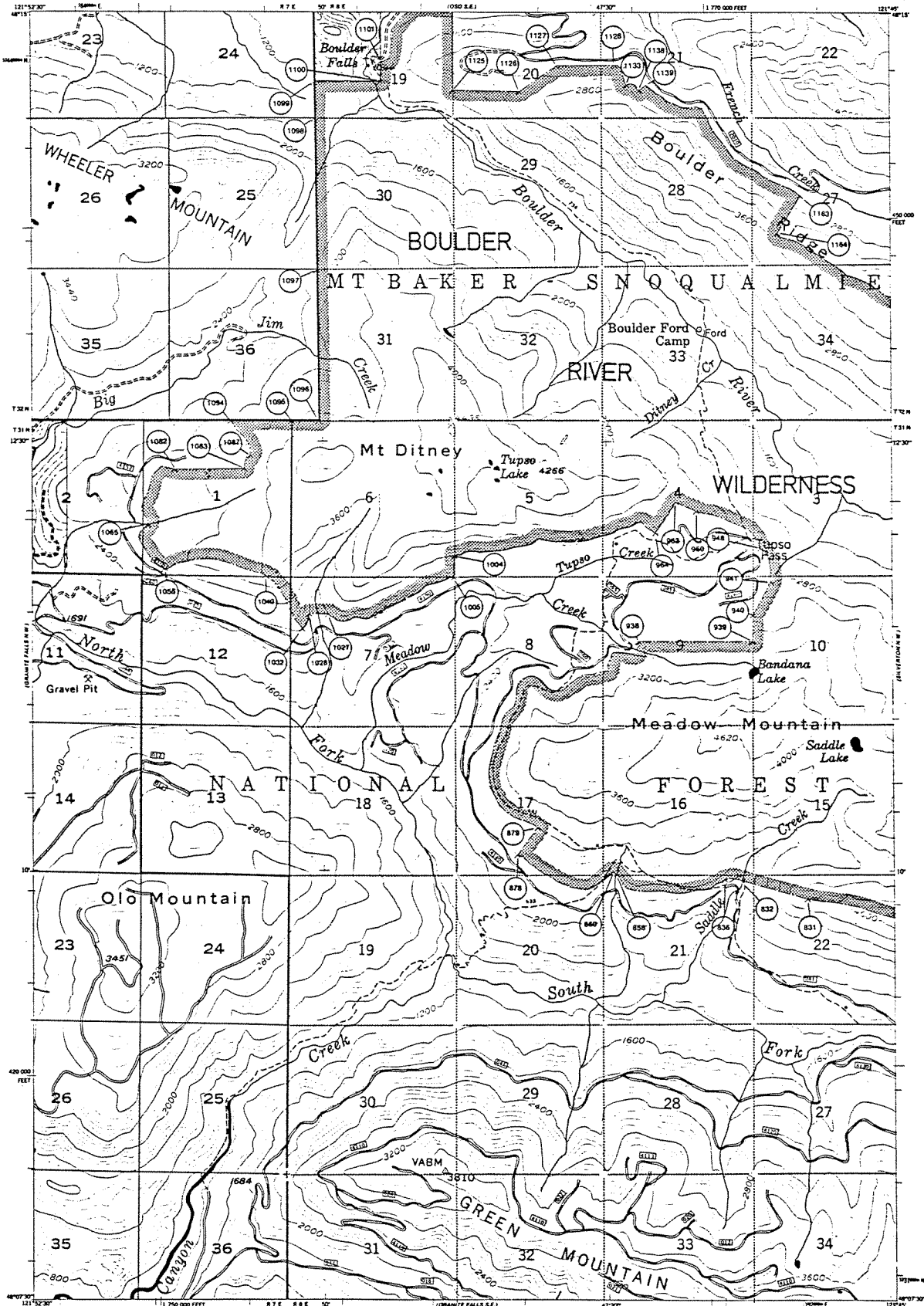




SCALE 1:62,500
SEPTEMBER 1988

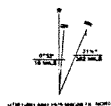
SILVERTON NW
INDEX MAP NUMBER 3





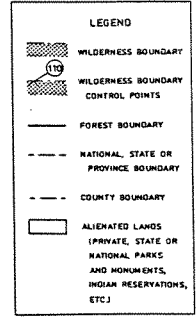
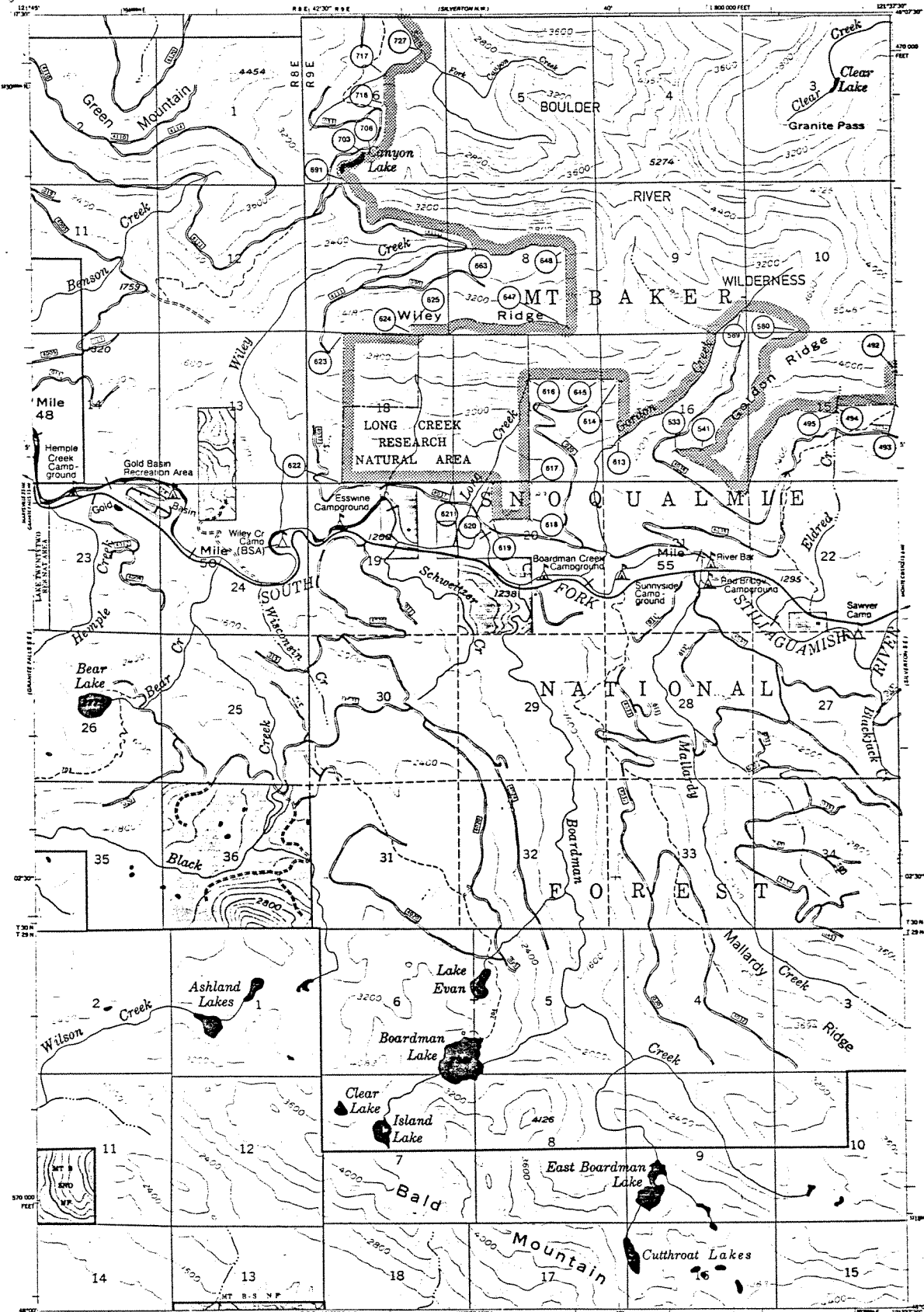
GRANITE FALLS NE
INDEX MAP NUMBER 4

SCALE 1:63,360
SEPTEMBER 1988



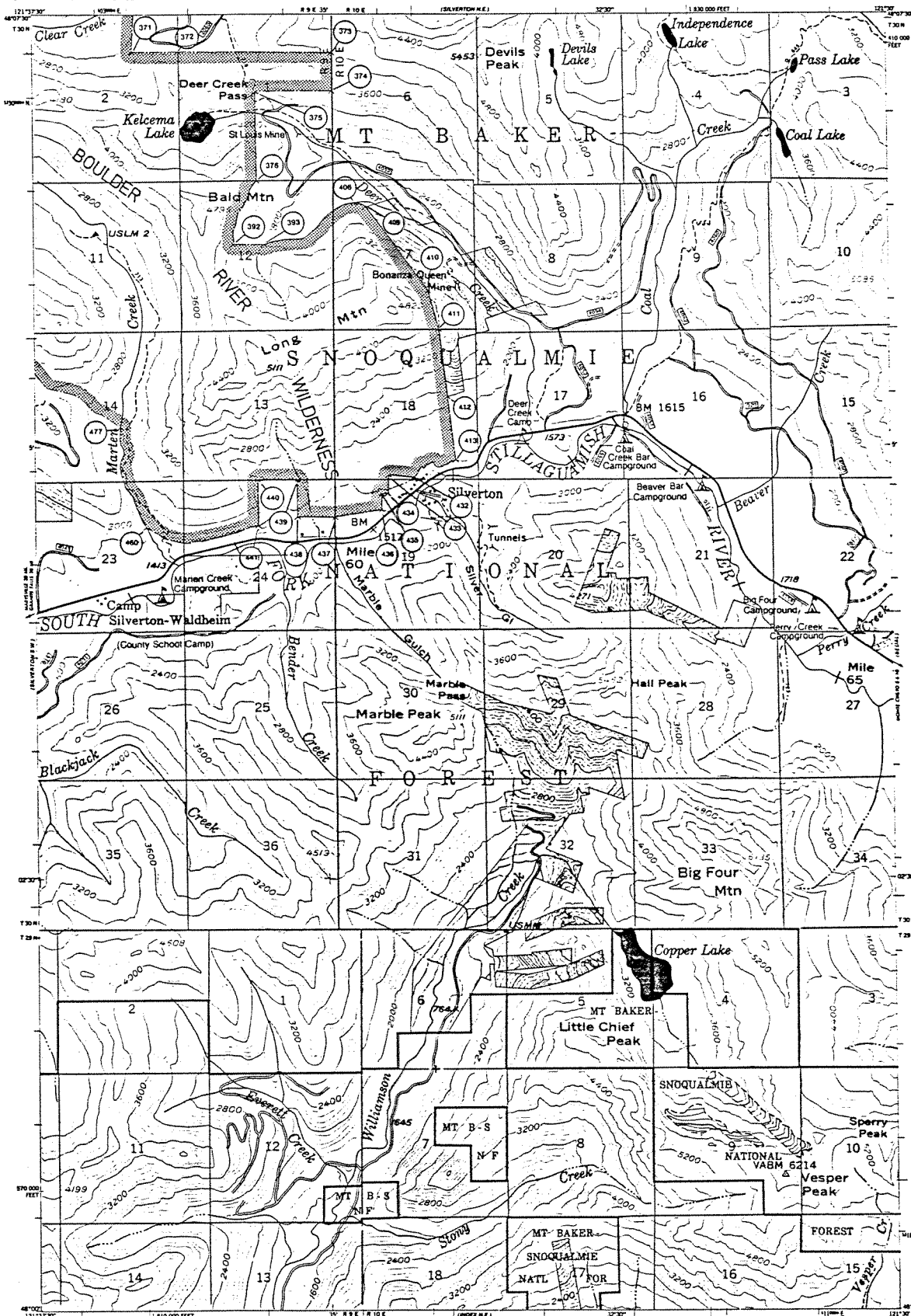
CONTOUR INTERVAL 80 FEET
DOTTED LINES REPRESENT 80 FOOT CONTOURS
DATUM IS MEAN SEA LEVEL

LETTER LINES ONLY WITH NUMBER TO NORTH
1000 FEET IS 1000 FEET



SILVERTON SW
INDEX MAP NUMBER 5

SCALE 1:63,360
SEPTEMBER 1985



LEGEND

- WILDERNESS BOUNDARY
- WILDERNESS BOUNDARY CONTROL POINTS
- FOREST BOUNDARY
- NATIONAL, STATE OR PROVINCE BOUNDARY
- COUNTY BOUNDARY
- ALIENATED LANDS (PRIVATE, STATE OR NATIONAL PARKS AND MONUMENTS, INDIAN RESERVATIONS, ETC.)

SCALE 1:62,500
SEPTEMBER 1986

SILVERTON S.E.
INDEX MAP NUMBER 6

