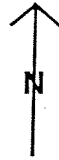


TRAPPER CREEK WILDERNESS

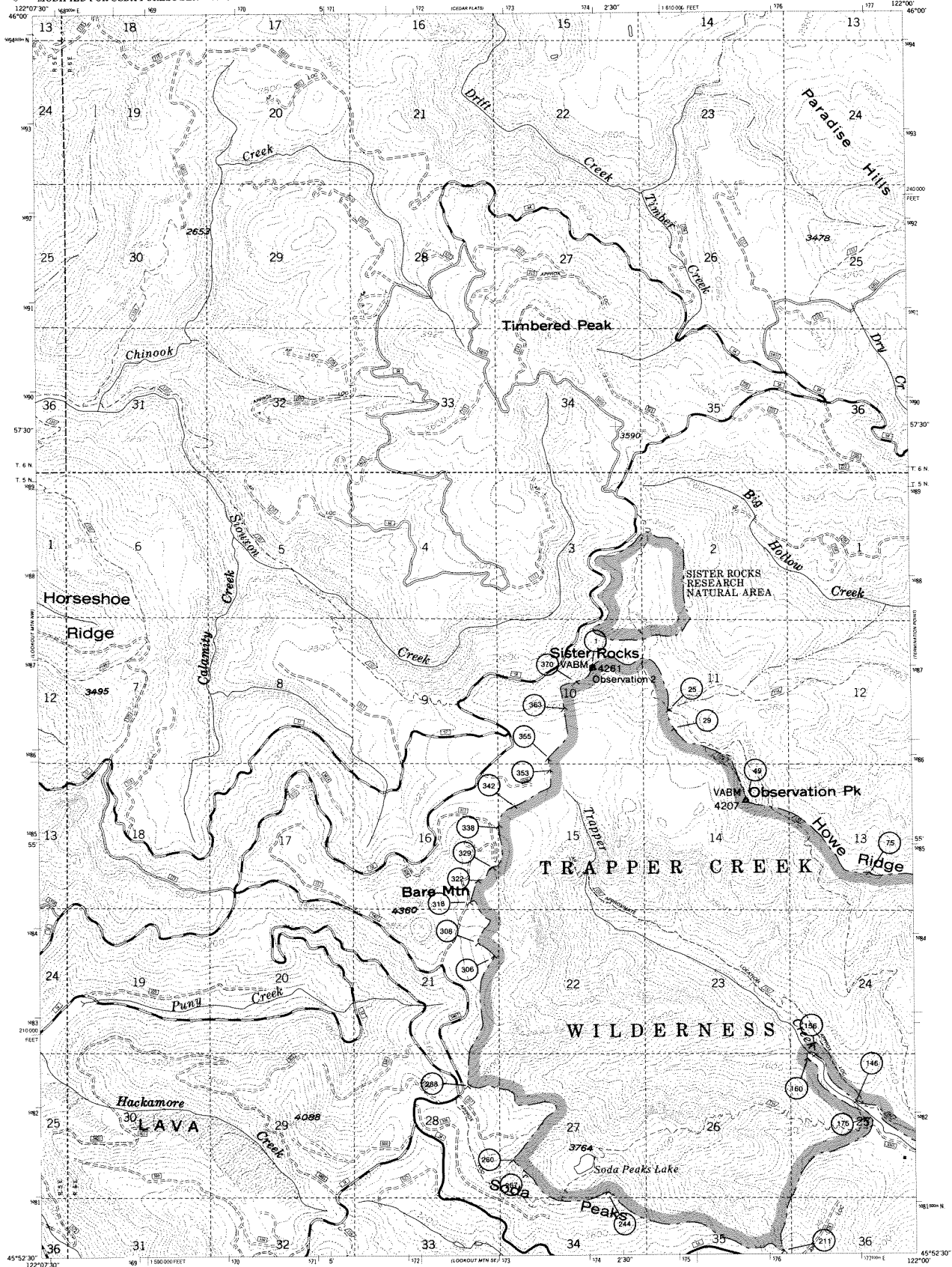


LOOKOUT MTN NE
INDEX MAP NUMBER 1

WIND RIVER NW
INDEX MAP NUMBER 2

UNITED STATES
DEPARTMENT OF THE INTERIOR
GEOLOGICAL SURVEY
MODIFIED FOR USDA FOREST SERVICE USE

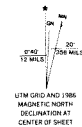
LOOKOUT MTN. N.E. QUADRANGLE
SKAMANIA COUNTY, WASH.
7.5 MINUTE SERIES (TOPOGRAPHIC)



LEGEND

- WILDERNESS BOUNDARY
- WILDERNESS BOUNDARY CONTROL POINTS
- FOREST BOUNDARY
- NATIONAL, STATE OR PROVINCE BOUNDARY
- COUNTY BOUNDARY
- ALIENATED LANDS (PRIVATE, STATE OR NATIONAL PARKS AND MONUMENTS, INDIAN RESERVATIONS, ETC.)

SCALE 1:63,360
SEPTEMBER 1986



LOOKOUT MTN. N.E.
INDEX MAP NUMBER 1

