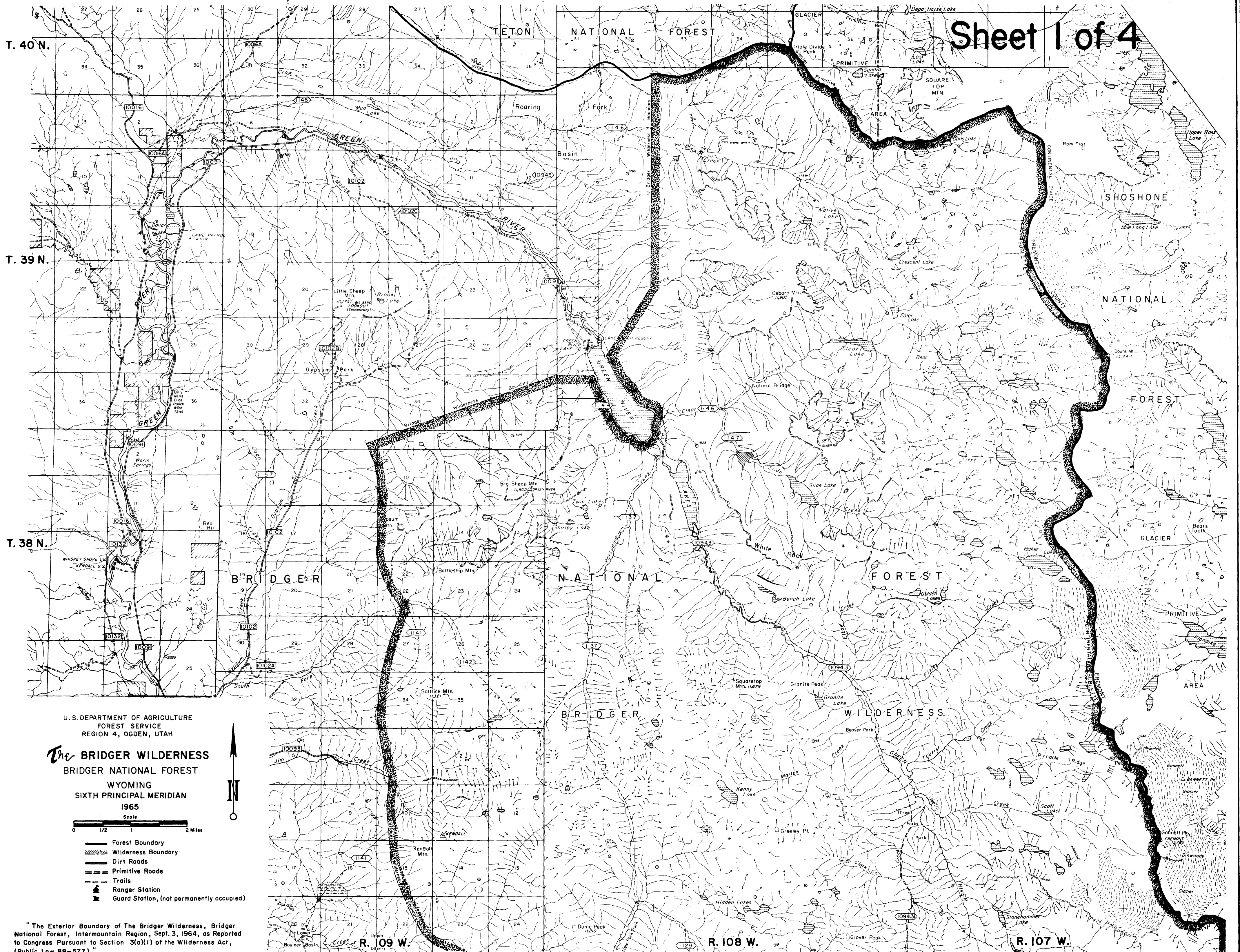


U. S. DEPARTMENT OF AGRICULTURE
FOREST SERVICE
REGION 4, OGDEN, UTAH

KEY MAP
for
The BRIDGER WILDERNESS
BRIDGER NATIONAL FOREST
WYOMING
SIXTH PRINCIPAL MERIDIAN
1965

- Wilderness Boundary
- ▨ The Bridger Wilderness
- U. S. Highway
- State Boundary
- Forest Boundary



T. 37 N.

T. 36 N.

T. 35 N.

U.S. DEPARTMENT OF AGRICULTURE
FOREST SERVICE
REGION 4, OGDEN, UTAH

The **BRIDGER WILDERNESS**
BRIDGER NATIONAL FOREST
WYOMING
SIXTH PRINCIPAL MERIDIAN
1965

Scale
0 1/2 2 Miles

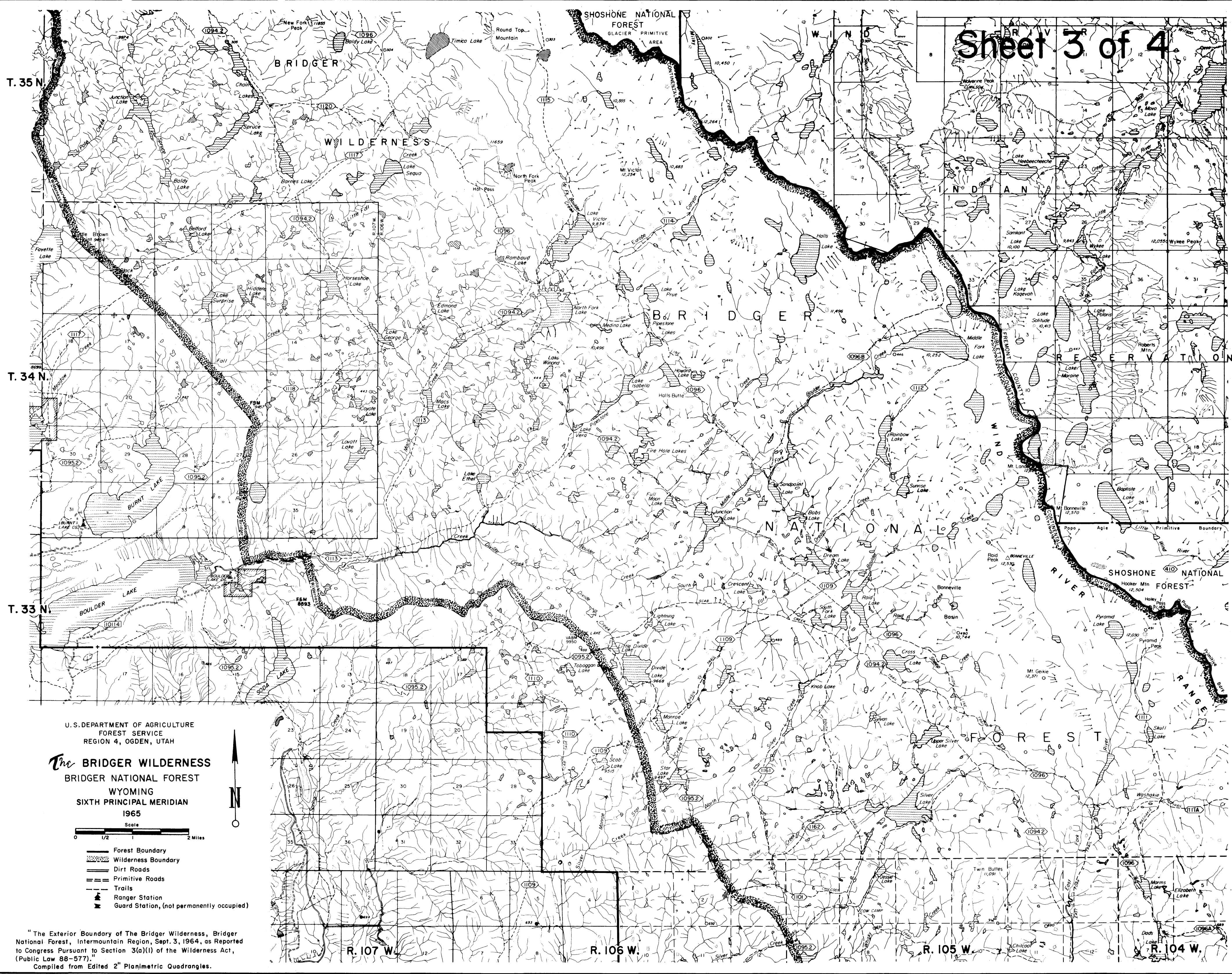
- Forest Boundary
- Wilderness Boundary
- Dirt Roads
- Primitive Roads
- - - Trails
- ▲ Ranger Station
- Guard Station (not permanently occupied)

"The Exterior Boundary of The Bridger Wilderness, Bridger National Forest, Intermountain Region, Sept. 3, 1964, as Reported to Congress Pursuant to Section 3(a)(1) of the Wilderness Act, (Public Law 88-577)."
Compiled from Edited 2" Planimetric Quadrangles.

R. 108 W.

R. 107 W.

R. 106 W.



U.S. DEPARTMENT OF AGRICULTURE
FOREST SERVICE
REGION 4, OGDEN, UTAH

The **BRIDGER WILDERNESS**
BRIDGER NATIONAL FOREST
WYOMING
SIXTH PRINCIPAL MERIDIAN
1965

Scale
0 1/2 2 Miles

- Forest Boundary
- Wilderness Boundary
- Dirt Roads
- Primitive Roads
- Trails
- ▲ Ranger Station
- ▲ Guard Station, (not permanently occupied)

"The Exterior Boundary of The Bridger Wilderness, Bridger National Forest, Intermountain Region, Sept. 3, 1964, as Reported to Congress Pursuant to Section 3(a)(1) of the Wilderness Act, (Public Law 88-577)."
Compiled from Edited 2" Planimetric Quadrangles.

T. 33 N.

T. 32 N.

T. 31 N.

R. 105 W.

R. 104 W.

R. 103 W.

R. 102 W.

U.S. DEPARTMENT OF AGRICULTURE
FOREST SERVICE
REGION 4, OGDEN, UTAH

The BRIDGER WILDERNESS
BRIDGER NATIONAL FOREST
WYOMING
SIXTH PRINCIPAL MERIDIAN
1965

Scale
0 1/2 1 2 Miles

- Forest Boundary
- Wilderness Boundary
- Dirt Roads
- Primitive Roads
- Trails
- Ranger Station
- Guard Station, (not permanently occupied)

"The Exterior Boundary of The Bridger Wilderness, Bridger National Forest, Intermountain Region, Sept. 3, 1964, as Reported to Congress Pursuant to Section 3(a)(1) of the Wilderness Act, (Public Law 88-577).
Compiled from Edited 2" Planimetric Quadrangles.

