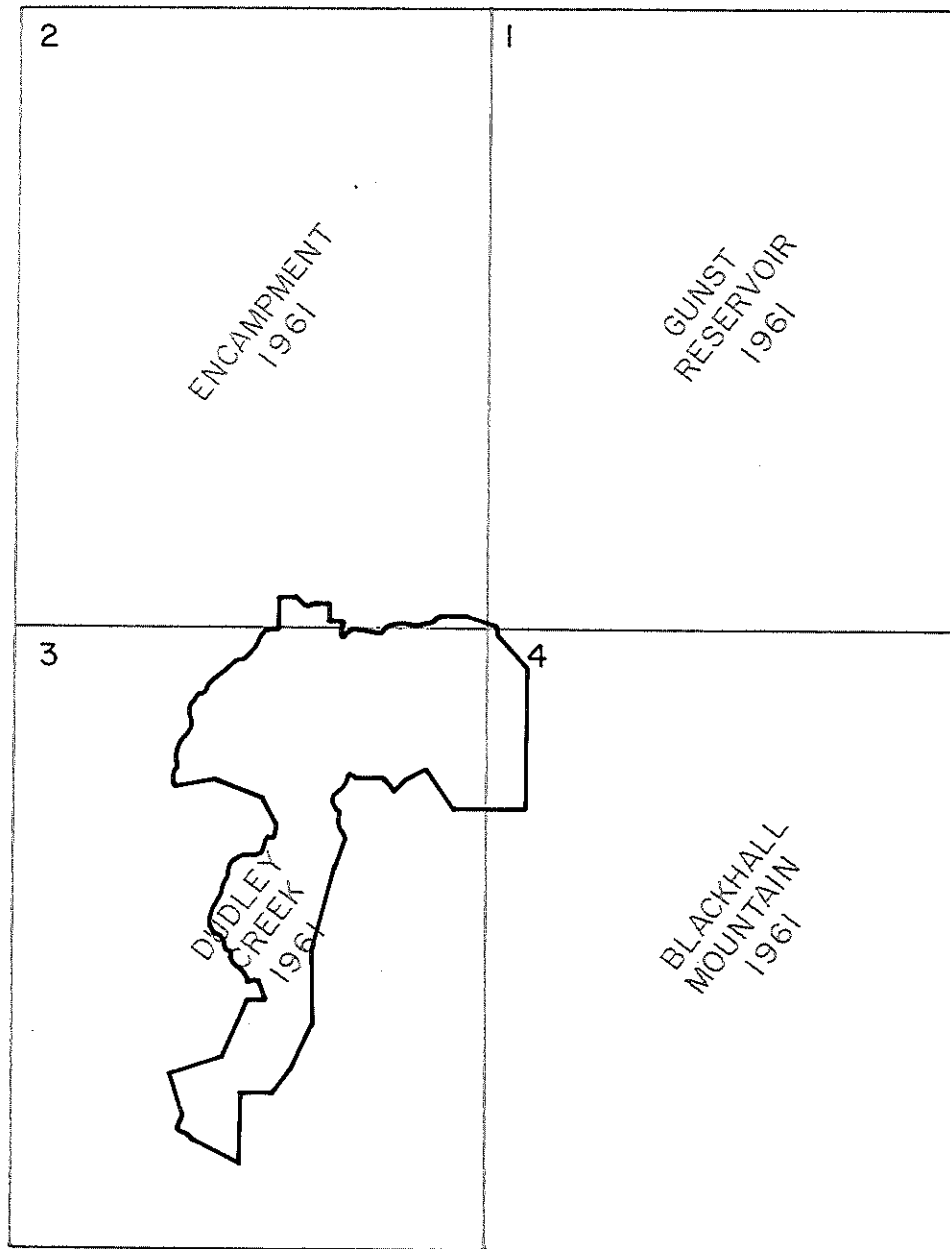
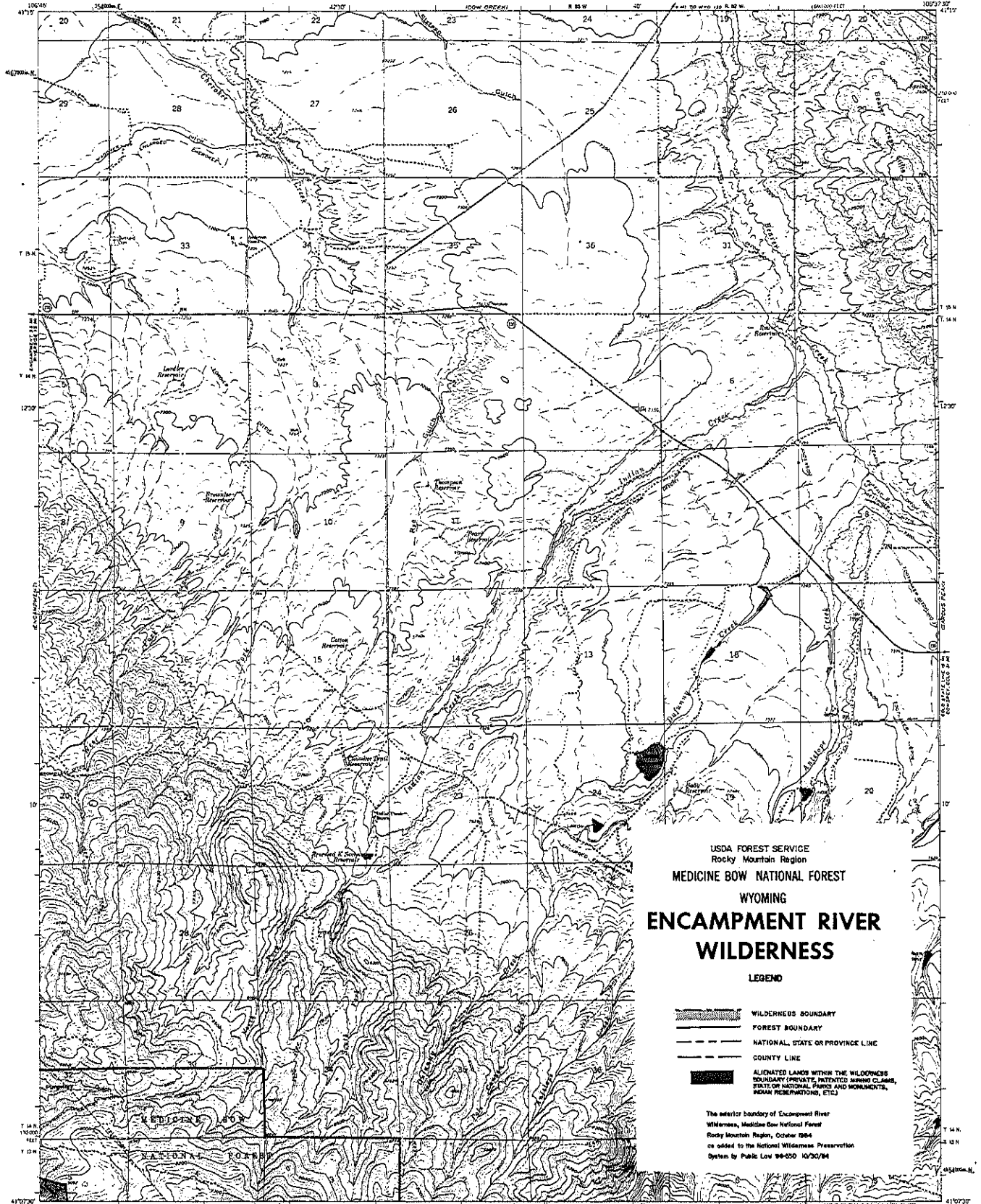


INDEX MAP

ENCAMPMENT RIVER WILDERNESS





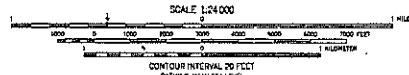
USDA FOREST SERVICE
Rocky Mountain Region
MEDICINE BOW NATIONAL FOREST
WYOMING
**ENCAMPMENT RIVER
WILDERNESS**

LEGEND

- WILDERNESS BOUNDARY
- FOREST BOUNDARY
- NATIONAL, STATE OR PROVINCE LINE
- COUNTY LINE
- ALIENATED LANDS WITHIN THE WILDERNESS
BOUNDARY (PRIVATE, PATENTED, AGENCY CLAIMS,
STATE OR NATIONAL PARKS AND MONUMENTS,
INDIAN RESERVATIONS, ETC.)

The exterior boundary of Encampment River
Wilderness, Medicine Bow National Forest
Rocky Mountain Region, October 1984
as added to the National Wilderness Preservation
System by Public Law 98-550 10/30/84

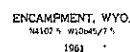
Mapped, edited, and published by the Geological Survey
as part of the Department of the Interior program
for the development of the Missouri River Basin
Control by USGS and USFWS
Topography by photogrammetric methods from aerial
photographs taken 1958. Field checked 1961.
Polyconic projection. 1927 North American datum.
30,000-foot grid based on Wyoming coordinate system; east central zone
1000-meter Universal Transverse Mercator grid ticks,
zone 13, shown in blue.
Fine red dashed lines indicate selected fence and title lines where
generally visible on aerial photographs. This information is unchecking.

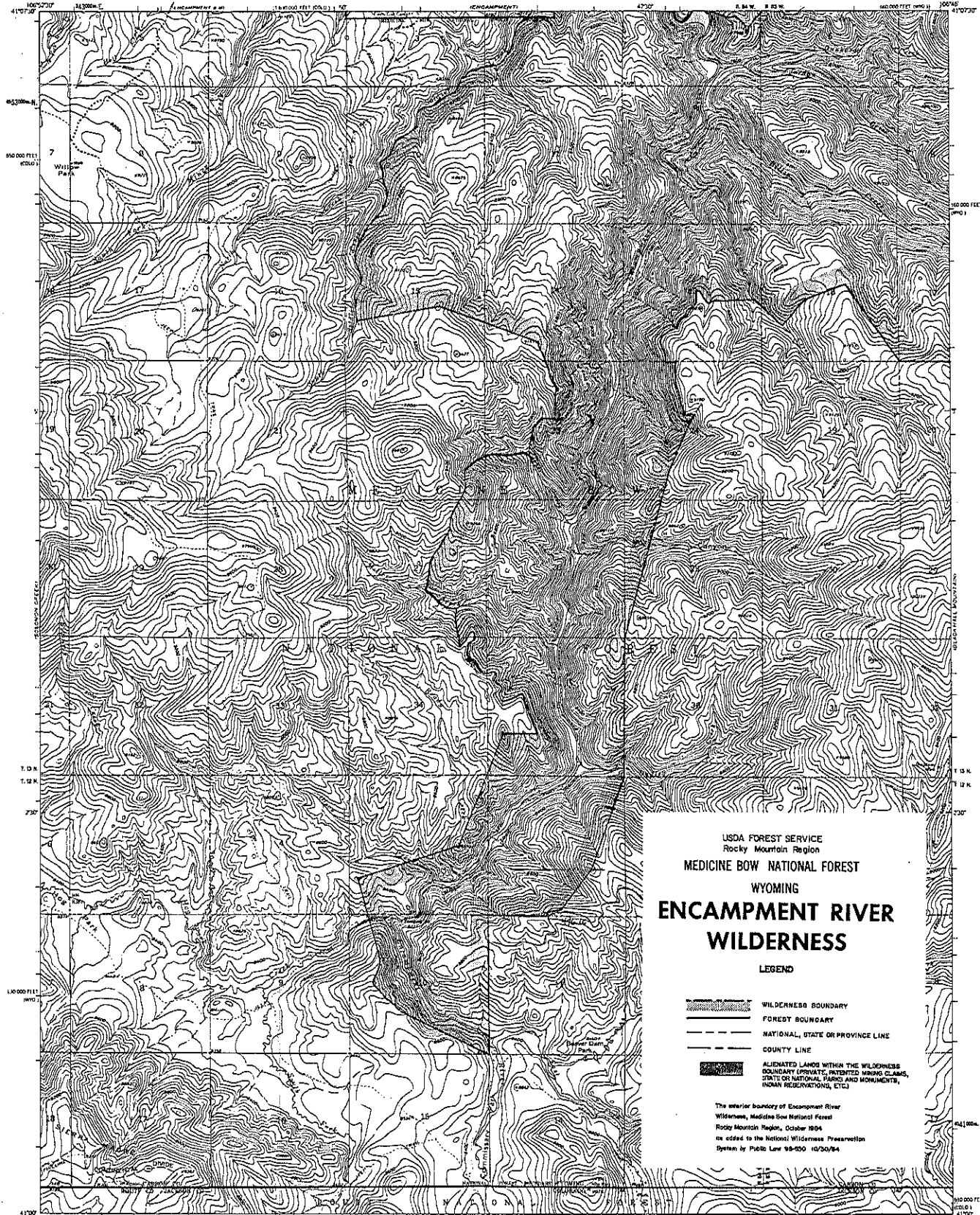


ROAD CLASSIFICATION
Medium duty Light-duty
Unimproved dirt
State Route



GUNST RESERVOIR, WYO.
N4107 5-W10037 5/7 5
1961





USDA FOREST SERVICE
Rocky Mountain Region
MEDICINE BOW NATIONAL FOREST
WYOMING
**ENCAMPMENT RIVER
WILDERNESS**

LEGEND

- WILDERNESS BOUNDARY
- FOREST BOUNDARY
- NATIONAL, STATE OR PROVINCE LINE
- COUNTY LINE
- ALIENATED LANDS WITHIN THE WILDERNESS BOUNDARY (PRIVATE, INTERESTED MINING CLAIMS, STATE OR NATIONAL PARKS AND MONUMENTS, BUREAU OF LAND MANAGEMENT, ETC.)

The interior boundary of Encampment River Wilderness, Medicine Bow National Forest, Rocky Mountain Region, October 1904, as added to the National Wilderness Preservation System by Public Law 95-600 (10/30/94)

Map made, edited, and published by the Geological Survey as part of the Department of the Interior program for the development of the Missouri River Basin. Control by USGS and USGARS.

Topography by altimetric methods from aerial photographs taken 1953 and 1960. Triangulation 1955. Photocopy projection. 1927 North American datum. 10,000 foot grid based on Wyoming coordinate system, north zone and Colorado coordinate system, north zone. 1000-meter Universal Transverse Mercator grid, zone 13, shown in blue. Where omitted, land lines have not been established or are not shown because of insufficient data.

CONTOUR INTERVAL 40 FEET
BASED ON MEAN SEA LEVEL

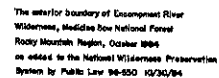
APPROXIMATE MEAN
ELEVATION, 1961

ROAD CLASSIFICATION
Unimproved dirt

QUADRANGLE LOCATION

SARATOGA 3 SE, WYO

DUDLEY CREEK, WYO.-COLO.
NAD 83 - WYOMING 7.5
1961



BLACKHALL MOUNTAIN, WYO.-COLO.
41106-A6-TF-024
1961
PHOTOGRAPHED 1963
DMA 4400 R STP-SUR/IBS Y974