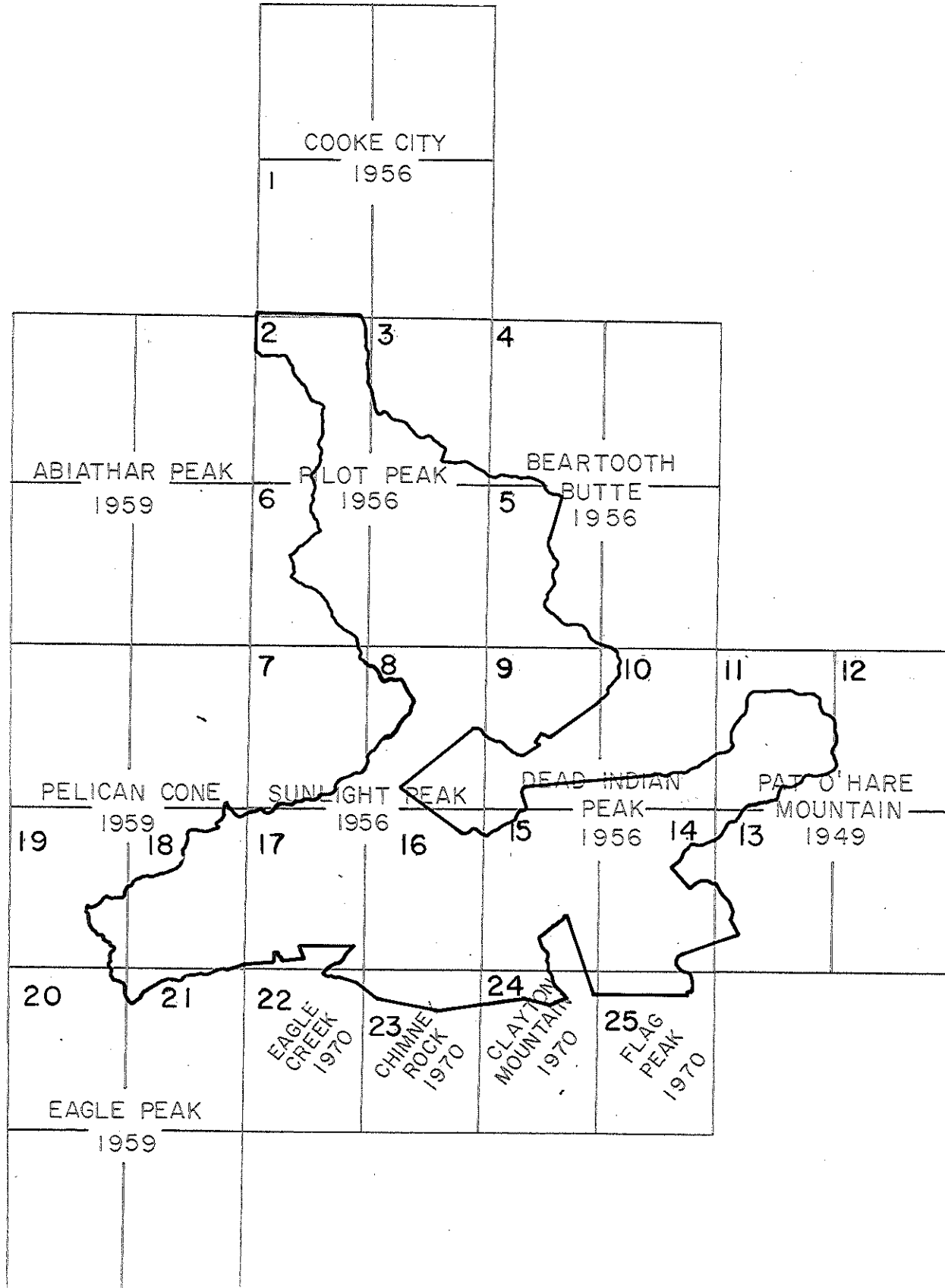
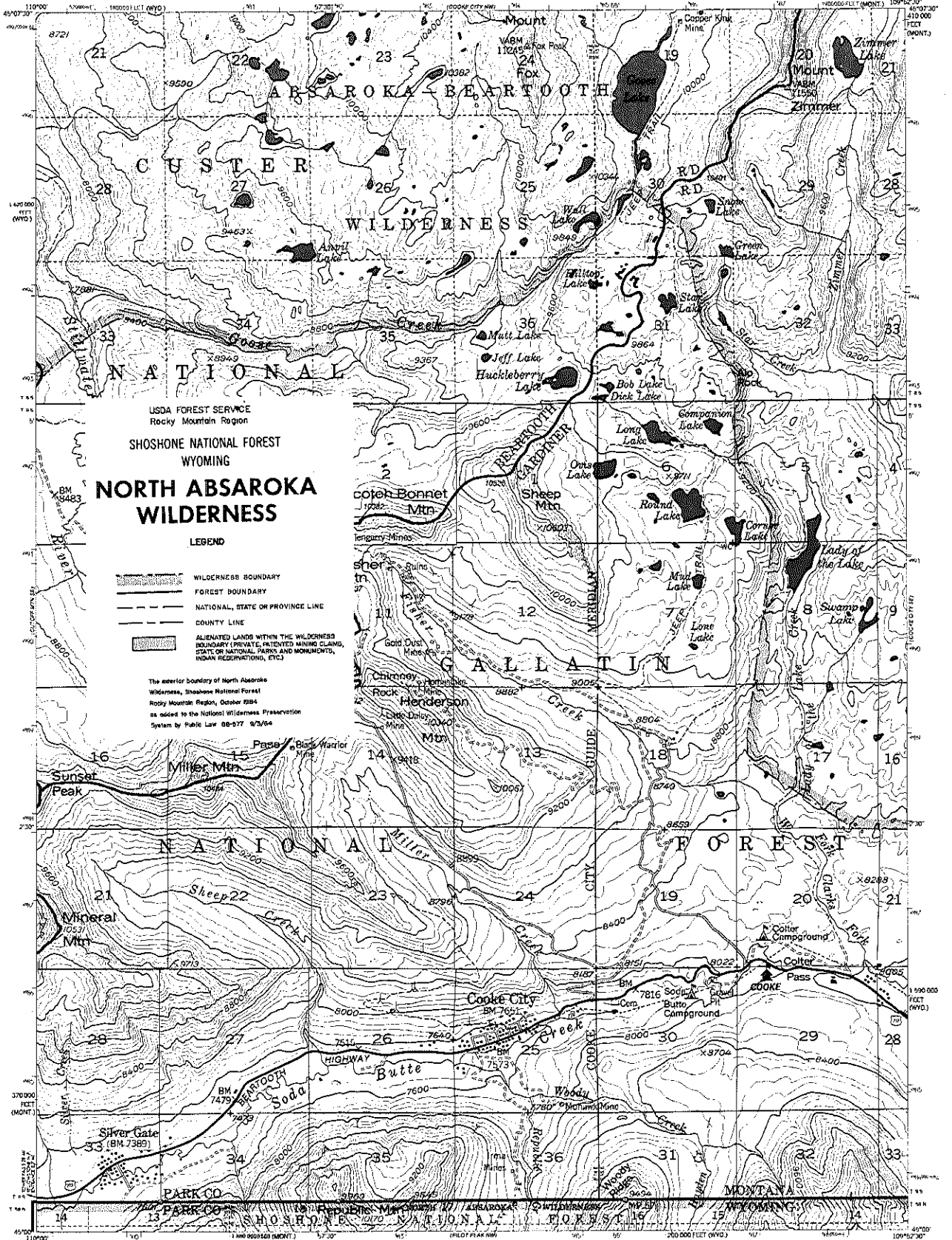


## INDEX MAP

# NORTH ABSAROKA WILDERNESS





USDA FOREST SERVICE  
Rocky Mountain Region  
SHOSHONE NATIONAL FOREST  
WYOMING  
**NORTH ABSAROKA  
WILDERNESS**

LEGEND

- WILDERNESS BOUNDARY
- FOREST BOUNDARY
- NATIONAL, STATE OR PROVINCE LINE
- COUNTY LINE
- ALIENATED LANDS WITHIN THE WILDERNESS BOUNDARY (PRIVATE, PATENTED MINING CLAIMS, STATE OR NATIONAL PARKS AND MONUMENTS, INDIAN RESERVATIONS, ETC.)

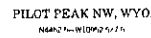
The exterior boundary of North Absaroka Wilderness, Shoshone National Forest, Rocky Mountain Region, October 1984, as added to the National Wilderness Preservation System by Public Law 98-577 9/25/84

Base map prepared by the U.S. Geological Survey  
Control by USGS and USDAO  
Topography by photogrammetric methods using aerial photographs taken 1949 and 1951. Field check 1955  
Planimetric correction 1927 North American datum  
10,000 foot grid based on Montana coordinate system  
south zone and Wyoming coordinate system  
and central zone  
1000 meter Universal Transverse Mercator grid  
Ticks, zone 12, shown in blue  
INTERMEDIATE EDITION  
Modified plan to USGS base map prepared by the  
Geological Survey Center from 1980 aerial  
photography and 1982 correction plan furnished  
by the Rocky Mountain Region  
Landmark revised according to additional  
Forest Service evidence

- CONTOUR INTERVAL 40 FEET  
NATIONAL DATUM: MEAN SEA LEVEL 1929
- LEGEND
- National Forest Boundary
  - Alienated Land within the National Forest Boundary
  - TOWNSHIP AND SECTION LINE CLASSIFICATION
  - Surveyed, Location Reliable
  - Surveyed, Location Unreliable
  - Unsurveyed, Location Unreliable
  - Unsurveyed, Location Unreliable
  - Primary Highway
  - Secondary Highway
  - Improved Light Duty
  - Unimproved Dirt
  - Trail
  - Interstate Highway
  - U.S. Highway
  - Scale Highway
  - Forest Road
  - Forest Trail

SHOSHONE NATIONAL FOREST  
QUADRANGLE LOCATION DIAGRAM  
MONTANA-WYOMING  
1984

1 of 25



UNITED STATES  
DEPARTMENT OF INTERIOR  
GEOLOGICAL SURVEY  
MODIFIED FOR USDA FOREST SERVICE USE

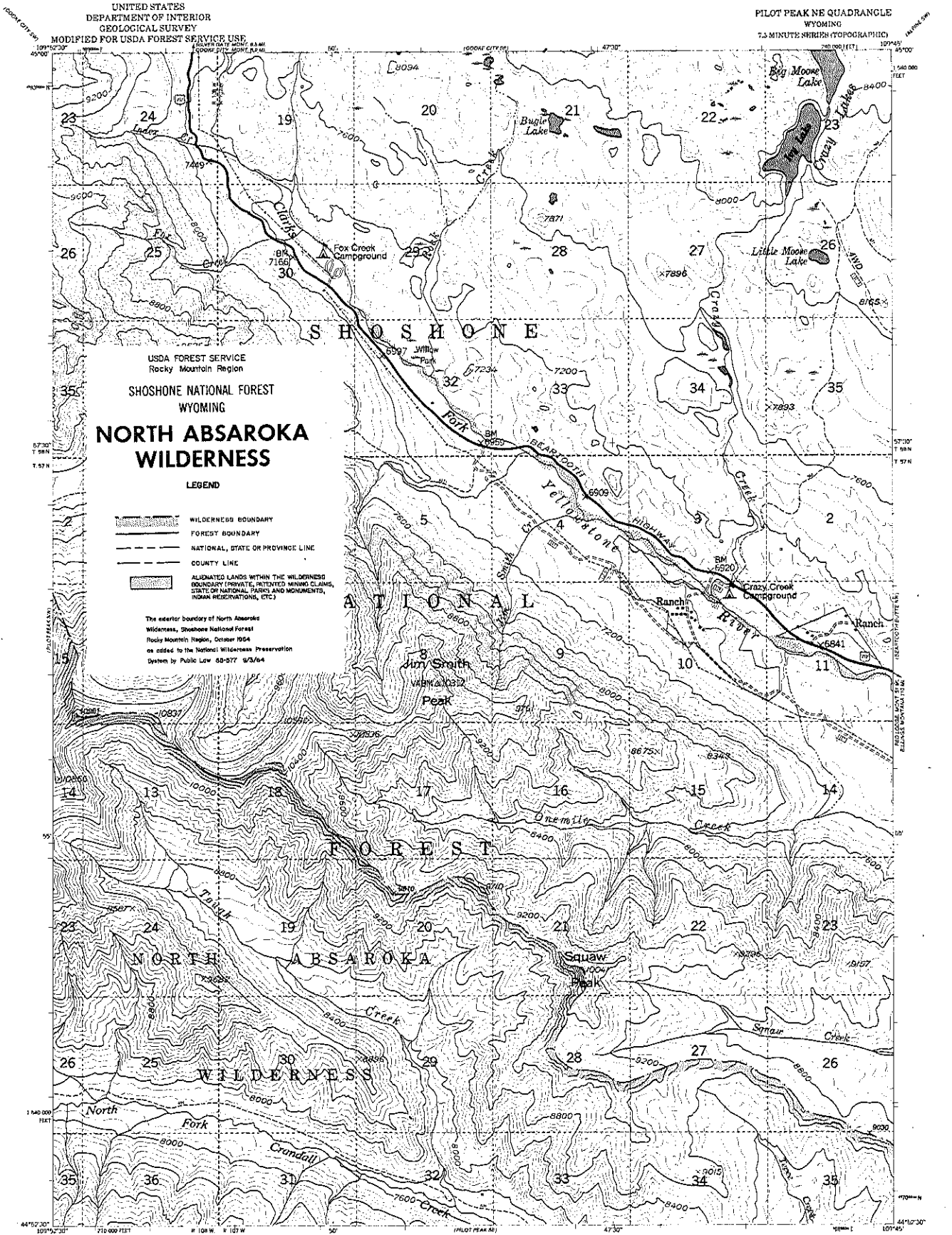
PILOT PEAK NE QUADRANGLE  
WYOMING  
7.5 MINUTE SERIES (TOPOGRAPHIC)

USDA FOREST SERVICE  
Rocky Mountain Region  
SHOSHONE NATIONAL FOREST  
WYOMING  
**NORTH ABSAROKA  
WILDERNESS**

LEGEND

- WILDERNESS BOUNDARY
- FOREST BOUNDARY
- NATIONAL, STATE OR PROVINCE LINE
- COUNTY LINE
- ALIENATED LANDS WITHIN THE WILDERNESS BOUNDARY (PRIVATE, TENTED MINING CLAIMS, STATE OR NATIONAL PARKS AND MONUMENTS, INDIAN RESERVATIONS, ETC.)

The exterior boundary of North Absaroka Wilderness, Shoshone National Forest, Rocky Mountain Region, October 1964 as added to the National Wilderness Preservation System by Public Law 88-577 6/3/64



Base map prepared by the U.S. Geological Survey

Control by USGS and USFS

Topography by photogrammetric methods from aerial photographs taken 1949 and 1951. Field check 1956.

Hydrographic projection, 1927 North American datum, 100,000 foot grid based on Wyoming coordinate system, with centred zone.

1000-meter Universal Transverse Mercator and Ticks, zone 12, shown in blue.

INTERMEDIATE EDITION  
Modification to USGS base map prepared by the Geomorphology Service Center from 1949 aerial photographs and 1962 correction guide furnished by the Rocky Mountain Region.

Letterhead revised according to additional Forest Service material.

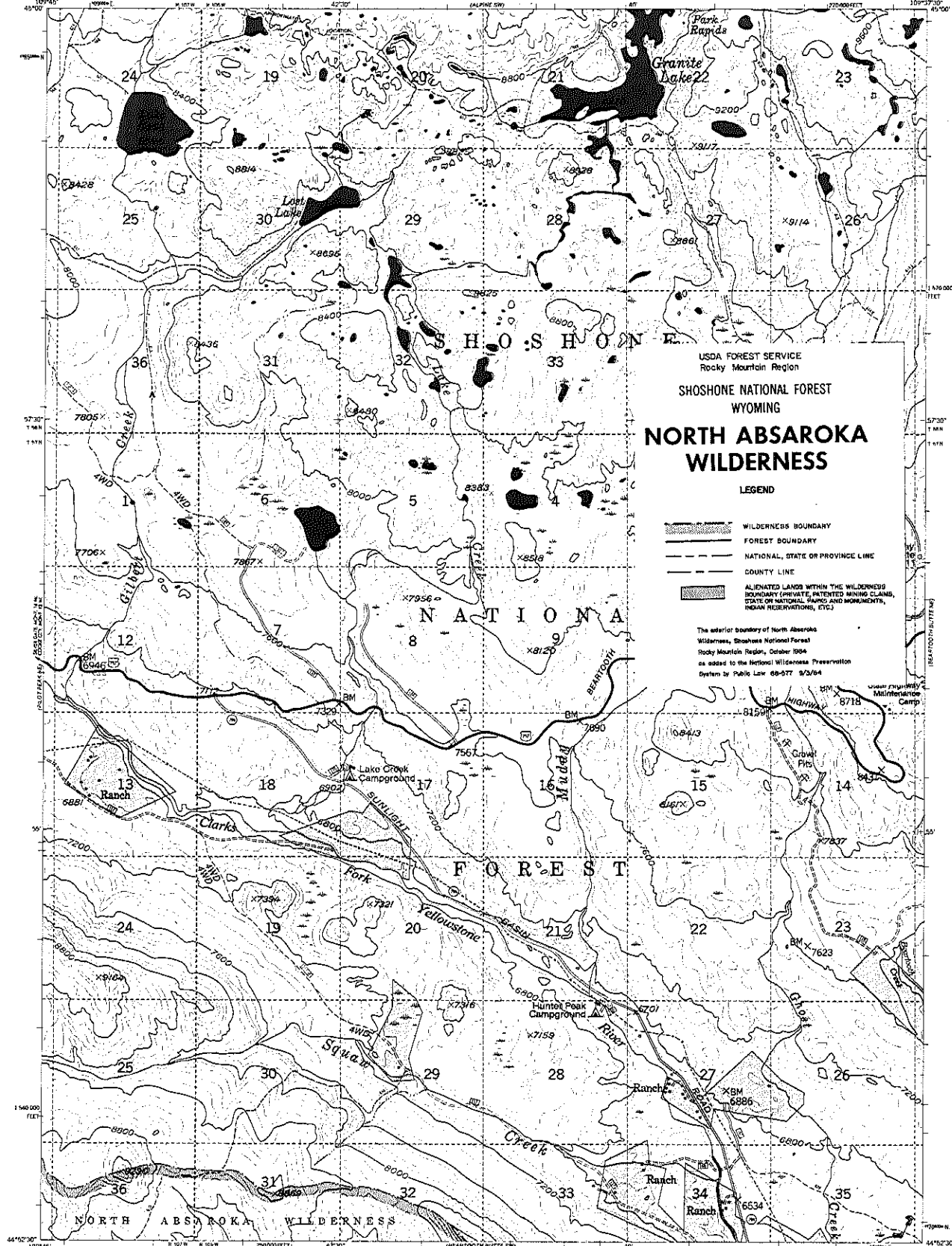
- National Forest Boundary
- Alienated Land within the National Forest Boundary
- TOWNSHIP AND RANGE LINE CLASSIFICATION
- Surveyed, Location Reliable
- Surveyed, Location Unreliable
- Unsurveyed, Protection by BLM

- Primary Highway
- Secondary Highway
- Improved Light Duty
- Unimproved Dirt
- Trail

- Interstate Highway
- U.S. Highway
- State Highway
- Forest Road
- Forest Trail



PILOT PEAK NE, WYO.  
NAD83 UTM 12S 12E  
1964



USDA FOREST SERVICE  
Rocky Mountain Region  
**SHOSHONE NATIONAL FOREST**  
WYOMING  
**NORTH ABSAROKA WILDERNESS**

- LEGEND**
- WILDERNESS BOUNDARY
  - FOREST BOUNDARY
  - NATIONAL, STATE OR PROVINCE LINE
  - COUNTY LINE
  - ALIENATED LANDS WITHIN THE WILDERNESS BOUNDARY (PRIVATE, PATENTED MINING CLAIMS, STATE OR NATIONAL PARKS AND MONUMENTS, INDIAN RESERVATIONS, ETC.)

The exterior boundary of North Absaroka Wilderness, Shoshone National Forest, Rocky Mountain Region, October 1964 as added to the National Wilderness Preservation System by Public Law 88-577 9/3/64

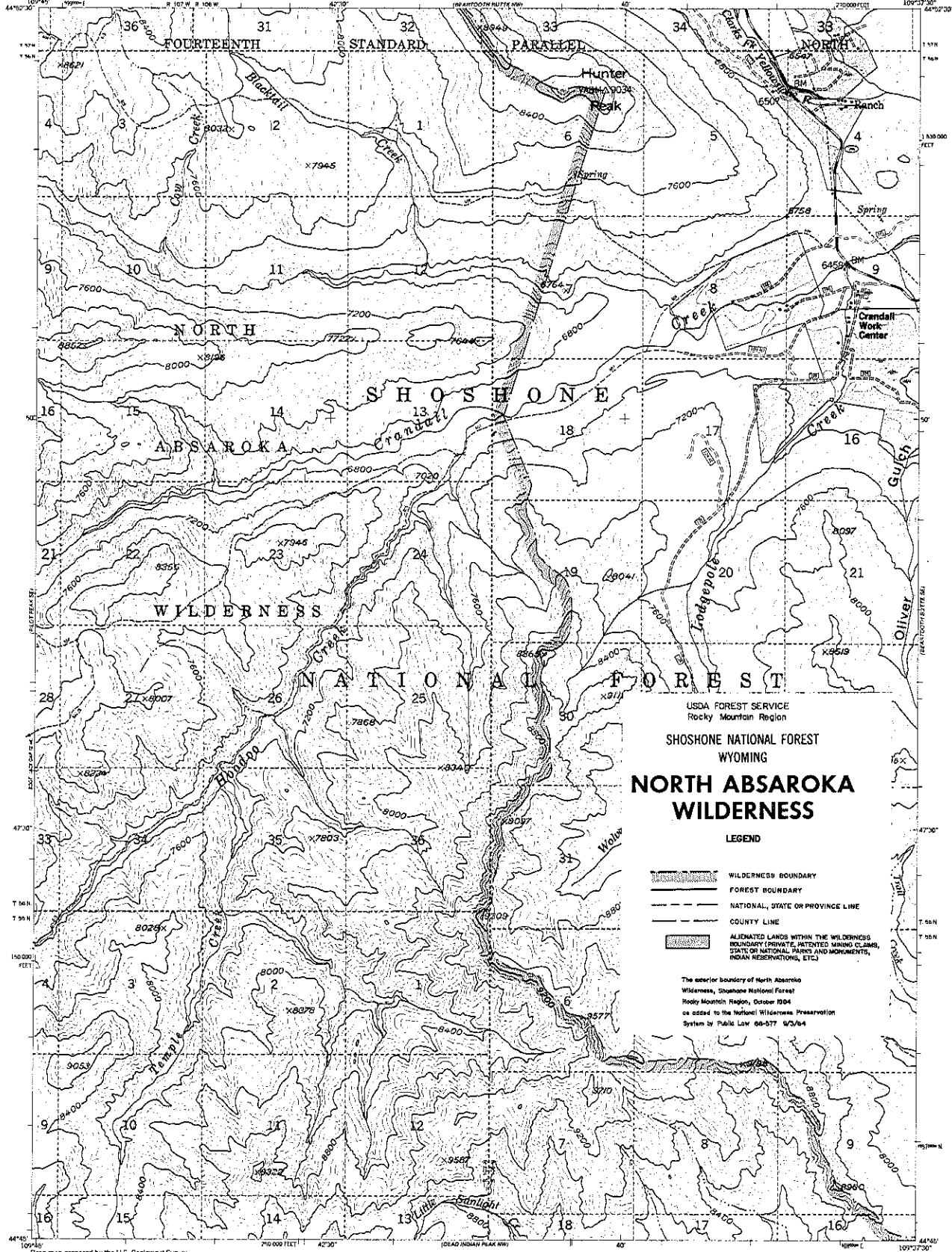
Base map prepared by the U.S. Geological Survey  
Control by USGS and USCA20  
Topography by photogrammetric methods from aerial photographs taken 1949 and 1951. Field check 1956  
Polyconic projection. 1927 North American datum  
10,000-foot grid based on Wyoming coordinate system, west central zone  
2000-meter Universal Transverse Mercator grid ticks, zone 12, shown in blue  
INTERMEDIATE EDITION  
Modification to USGS base map prepared by the Geomorphology Service Center from 1980 aerial photography and 1980 contour updates furnished by the Rocky Mountain Region  
Land use revised according to additional Forest Service evidence

SCALE 1:24,000  
CONTOUR INTERVAL 80 FEET  
NATIONAL GEODETIC MEAN DATUM OF 1929

**LEGEND**

- National Forest Boundary
- Alienated Lands within the National Forest Boundary
- TOWNSHIP AND SECTION LINE CLASSIFICATION
- Surveyed, Location Reliable
- Surveyed, Location Unreliable
- Unsurveyed, Protection by BLM
- Primary Highway
- Secondary Highway
- Improved Light Duty
- Unimproved Dirt
- Trail
- Interstate Highway
- U.S. Highway
- State Highway
- Forest Road
- Forest Trail

SHOSHONE NATIONAL FOREST  
BEARTOOTH BUTTE NW, WYO.  
144675 9-1950/7/75  
1956  
4 of 25

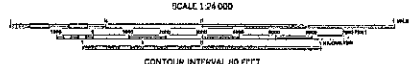


USDA FOREST SERVICE  
Rocky Mountain Region  
**SHOSHONE NATIONAL FOREST**  
WYOMING  
**NORTH ABSAROKA WILDERNESS**

LEGEND

- WILDERNESS BOUNDARY
- FOREST BOUNDARY
- NATIONAL, STATE OR PROVINCE LINE
- COUNTY LINE
- ALIENATED LANDS WITHIN THE WILDERNESS  
BOUNDARY (PRIVATE, PATENTED MINING CLAIMS,  
STATE OR NATIONAL PARKS AND MONUMENTS,  
INDIAN RESERVATIONS, ETC.)

The exterior boundary of North Absaroka  
Wilderness, Shoshone National Forest  
Rocky Mountain Region, October 1984  
as added to the National Wilderness Preservation  
System by Public Law 98-577 9/3/84



- CONTOUR INTERVAL 40 FEET  
NATIONAL GEODETIC VERTICAL DATUM OF 1929
- |   |                     |                    |
|---|---------------------|--------------------|
| National Forest Boundary                              | Primary Highway     | Interstate Highway |
| Alienated Land within the<br>National Forest Boundary | Secondary Highway   | U.S. Highway       |
| TOWNSHIP AND SECTION LINE CLASSIFICATION              | Improved Light Duty | State Highway      |
| Surveyed, Location Reliable                           | Unimproved Dirt     | Forest Road        |
| Surveyed, Location Unreliable                         | Trail               | Forest Trail       |
| Unsurveyed, Projection by BLM                         |                     |                    |



SHOSHONE NATIONAL FOREST  
QUADRANGLE  
LOCATION DIAGRAM



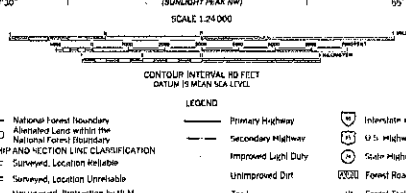
# SHOSHONE NATIONAL FOREST WYOMING NORTH ABSAROKA WILDERNESS

## LEGEND

- WILDERNESS BOUNDARY
- FOREST BOUNDARY
- NATIONAL, STATE OR PROVINCE LINE
- COUNTY LINE
- ALIENATED LANDS WITHIN THE WILDERNESS BOUNDARY (PRIVATE, INTENDED MINING CLAIMS, STATE OR NATIONAL, PARKS AND MONUMENTS, INDIAN RESERVATIONS, ETC.)

The exterior boundary of North Absaroka Wilderness, Shoshone National Forest, Rocky Mountain Region, October 1986 as added to the National Wilderness Preservation System by Public Law 99-577 9/3/84

Base map prepared by the U.S. Geological Survey  
Control by USGS and USGS  
Topography by photogrammetric methods from aerial photographs taken 1947 and 1951. Field check 1955.  
Polyconic projection, 1927 North American datum, 10,000 feet grid based on Wyoming coordinate system, west central zone.  
1000 meter Universal Transverse Mercator and GCS, zone 12, shown in blue.  
INTERMEDIATE EDITION  
Modification to USGS base map prepared by the Geomatics Service Center from 1982 aerial photography and 1982 correction points furnished by the Rocky Mountain Region.  
Landmark revised according to additional Forest Service evidence.



## LEGEND

- National Forest Boundary
- Alienated Lands within the National Forest Boundary
- TOWNSHIP AND SECTION LINE CLARIFICATION
- Surveyed, Location Unreliable
- Unsurveyed, Protection by RLM
- Primary Highway
- Secondary Highway
- Improved Light Duty
- Unimproved Dirt
- Trail
- Interstate Highway
- U.S. Highway
- State Highway
- Forest Road
- Forest Trail



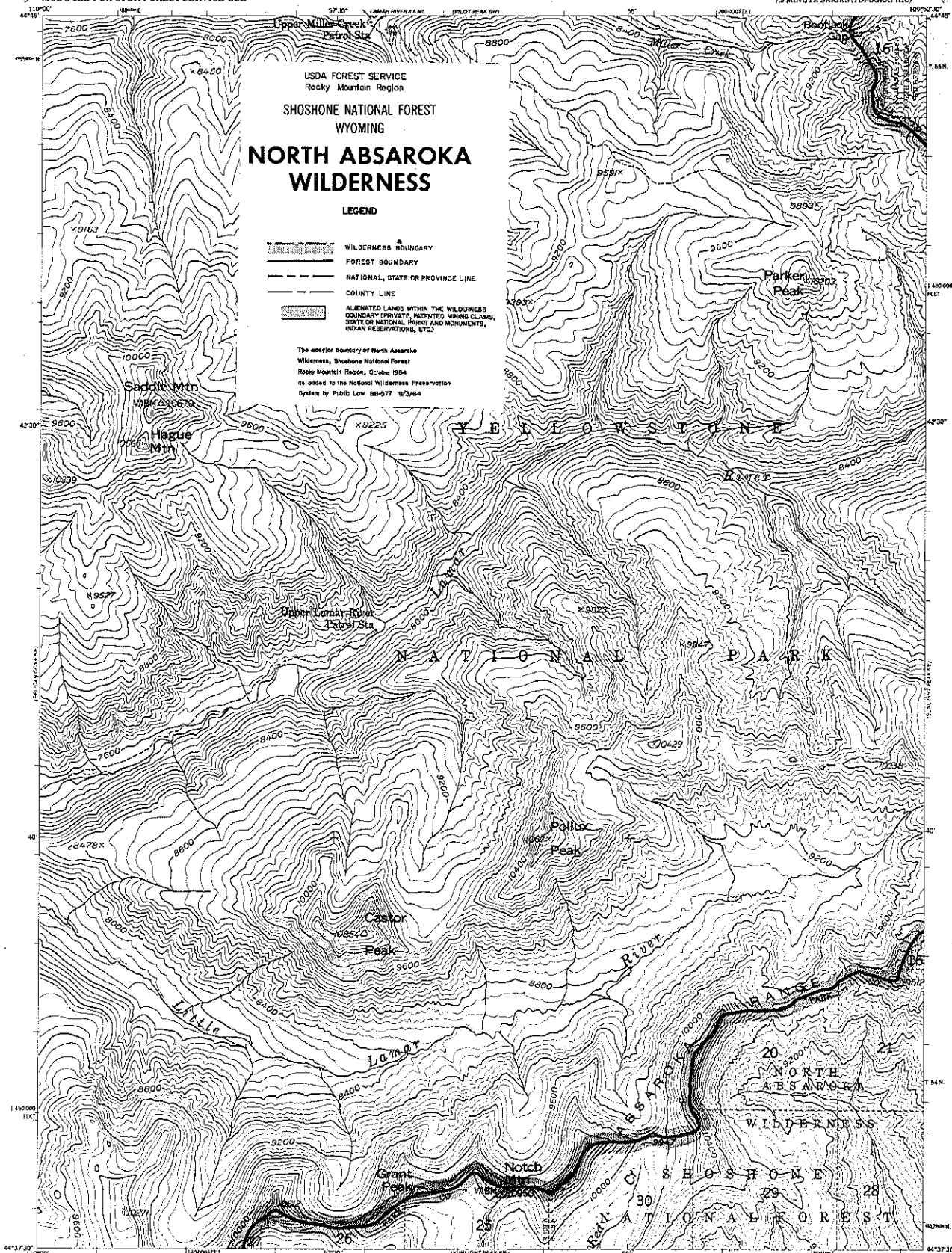
SHOSHONE NATIONAL FOREST  
QUADRANGLE  
LOCATION DIAGRAM  
PILOT PEAK SW, WYO.  
1986  
6 of 25

USDA FOREST SERVICE  
Rocky Mountain Region  
SHOSHONE NATIONAL FOREST  
WYOMING  
**NORTH ABSAROKA  
WILDERNESS**

LEGEND

- WILDERNESS BOUNDARY
- FOREST BOUNDARY
- NATIONAL, STATE OR PROVINCE LINE
- COUNTY LINE
- ALIENATED LANDS WITHIN THE WILDERNESS  
BOUNDARY (PRIVATE, PATENTED MINING CLAIMS,  
STATE OR NATIONAL PARKS AND MONUMENTS,  
INDIAN RESERVATIONS, ETC.)

The exterior boundary of North Absaroka  
Wilderness, Shoshone National Forest  
Rocky Mountain Region, October 1964  
as added to the National Wilderness Preservation  
System by Public Law 88-477 9/3/64



Base map prepared by the U.S. Geological Survey  
Control by USGS and USCAOS  
Topography by photogrammetric methods from aerial  
photographs taken 1949 and 1951. First check 1956  
Photocopy projection: 1927 North American datum  
10,000-foot grid based on Wyoming coordinate system,  
west central zone  
1,000-meter Universal Transverse Mercator and  
Tiger, zone 12, shown in blue  
INTERMEDIATE EDITION  
Modification to USGS base map prepared by the  
Geological Survey Center from 1952 aerial  
photography and 1956 correction guides furnished  
by the Rocky Mountain Region  
Landmark revised according to additional  
Forest Service evidence



- |  |                     |                  |
|--|---------------------|------------------|
| National Forest Boundary                           | Primary Highway     | Township Highway |
| Alienated Land within the National Forest Boundary | Secondary Highway   | U.S. Highway     |
| TOWNSHIP AND RANGE LINE CLASSIFICATION             | Improved Light Duty | State Highway    |
| Surveyed, Location Reliable                        | Unimproved Dirt     | Forest Road      |
| Surveyed, Location Unreliable                      | Trail               | Forest Trail     |
| Unsurveyed, Projection by ELM                      |                     |                  |



SHOSHONE NATIONAL FOREST  
SUNLIGHT PEAK NW, WYO.  
QUADRANGLE LOCATION DIAGRAM  
NAD 17S-W109P1/7.5  
1966

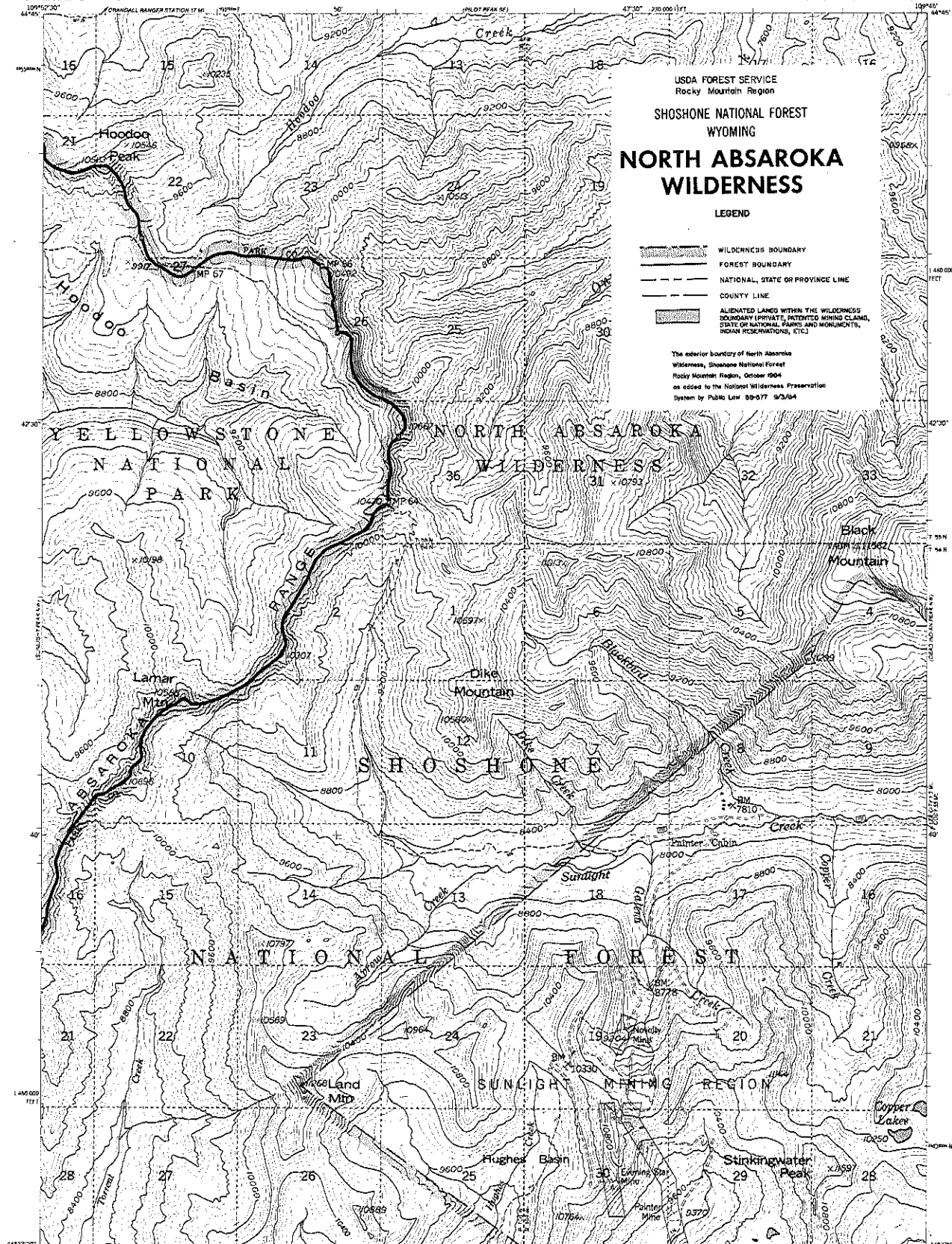


USDA FOREST SERVICE  
Rocky Mountain Region  
SHOSHONE NATIONAL FOREST  
WYOMING  
**NORTH ABSAROKA  
WILDERNESS**

LEGEND

- WILDERNESS BOUNDARY
- FOREST BOUNDARY
- NATIONAL, STATE OR PROVINCE LINE
- COUNTY LINE
- ALIENATED LANDS WITHIN THE WILDERNESS  
BOUNDARY (PRIVATE, PATENTED MINING CLAIMS,  
STATE OR NATIONAL PARKS AND MONUMENTS,  
INDIAN RESERVATIONS, ETC.)

The exterior boundary of North Absaroka  
Wilderness, Shoshone National Forest  
Rocky Mountain Region, October 1994  
as added to the National Wilderness Preservation  
System by Public Law 103-177 9/3/94



Base map prepared by the U.S. Geological Survey  
Control by USGS and USFWS  
Topography by photogrammetric methods from aerial  
photographs taken 1947 and 1953. Grid check 1956  
Polyconic projection 1:24,000 North American datum  
10,000 feet and based on Wyoming coordinate system,  
with central zone  
2000-meter Universal Transverse Mercator grid  
zone 12, shown in blue  
INTERMEDIATE EDITION  
Modifications to USGS base map prepared by the  
Geographic Service Center from 1960 aerial  
photography and 1967 correction plates furnished  
by the Rocky Mountain Region  
Land area involved according to additional  
Forest Service evidence

- National Forest Boundary
- Alienated Land within the  
National Forest Boundary
- TOWNSHIP AND SECTION LINE CLARIFICATION
- Surveyed, Location Reliable
- Unsurveyed, Location Unreliable
- Unsurveyed, Projection by DLM

LEGEND

- Primary Highway
- Secondary Highway
- Improved Light Duty
- Unimproved Dirt
- Trail
- Interstate Highway
- U.S. Highway
- State Highway
- Forest Road
- Forest Trail



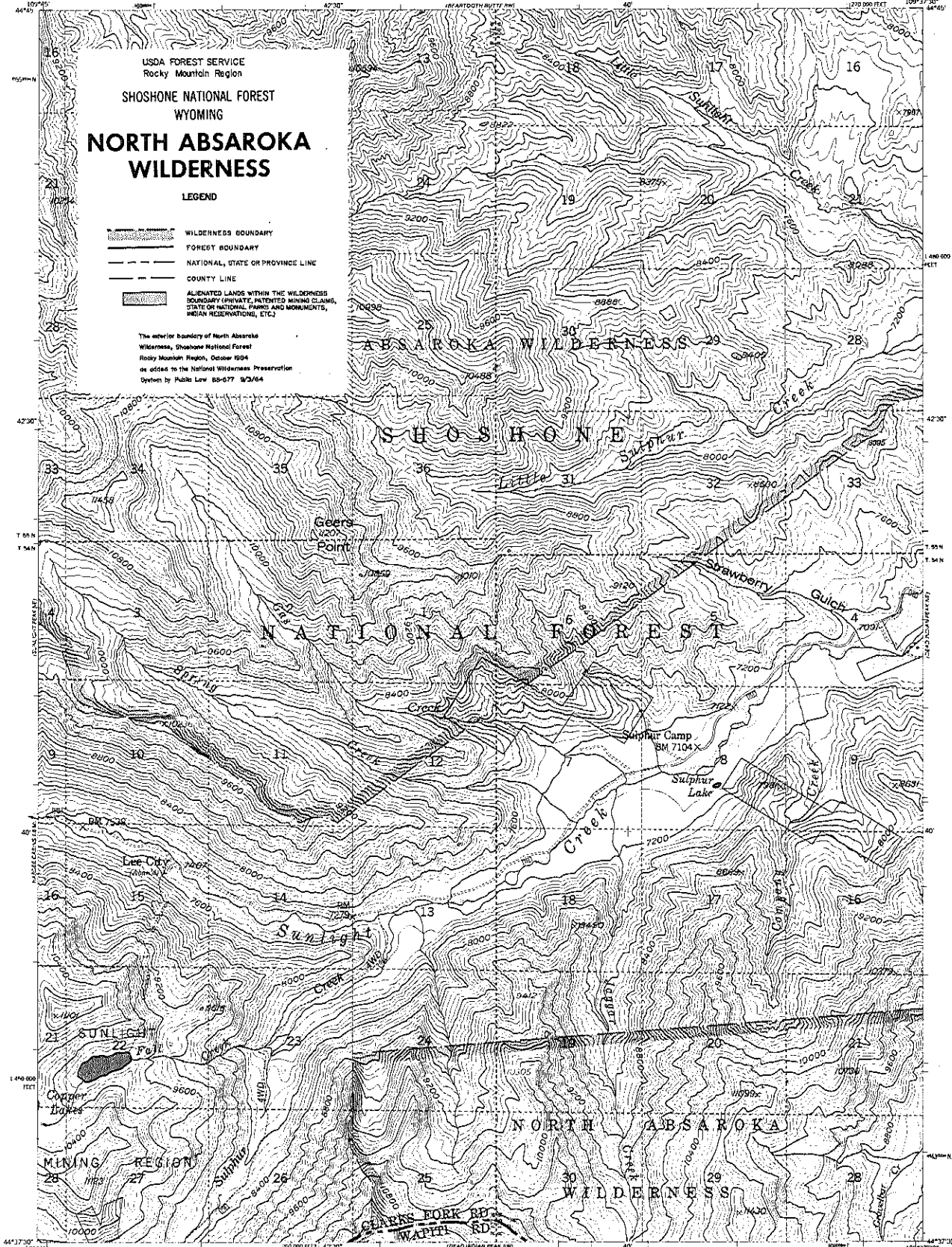
SHOSHONE NATIONAL FOREST  
QUADRANGLE LOCATION DIAGRAM  
1994

USDA FOREST SERVICE  
Rocky Mountain Region  
SHOSHONE NATIONAL FOREST  
WYOMING  
**NORTH ABSAROKA  
WILDERNESS**

LEGEND

- WILDERNESS BOUNDARY
- FOREST BOUNDARY
- NATIONAL, STATE OR PROVINCE LINE
- COUNTY LINE
- ALIENATED LANDS WITHIN THE WILDERNESS  
BOUNDARY (PRIVATE, INTERESTED MINING CLAIMS,  
STATE OR NATIONAL PARKS AND MONUMENTS,  
INDIAN RESERVATIONS, ETC.)

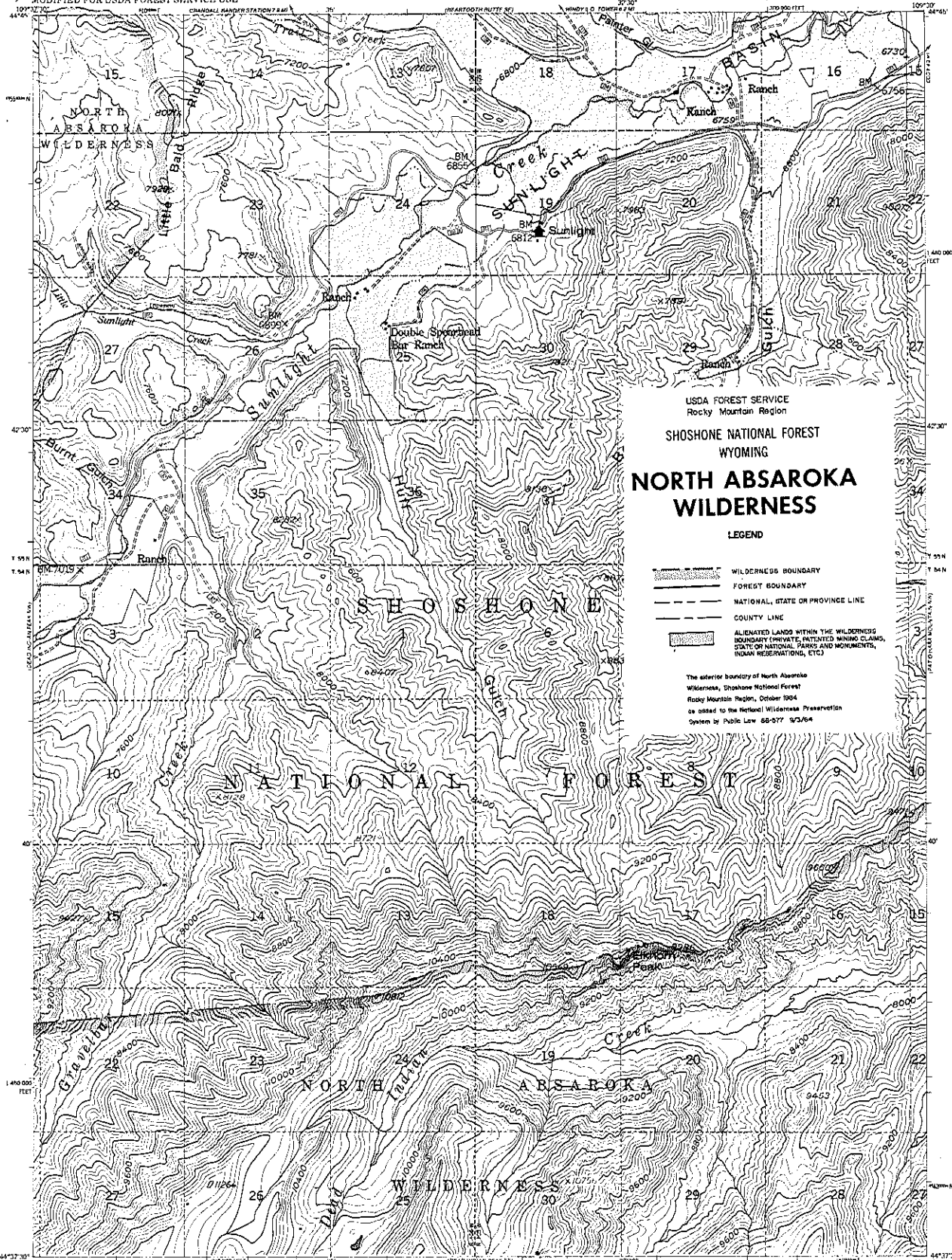
The exterior boundary of North Absaroka  
Wilderness, Shoshone National Forest  
Rocky Mountain Region, October 1994  
as added to the National Wilderness Preservation  
System by Public Law 103-677 9/2/94



State map prepared by the U.S. Geological Survey  
Control by USGS and USFWS  
Topography by photogrammetric methods from aerial  
photographs taken 1949. Field check 1955.  
Projection: 1927 North American datum  
10,000 foot grid based on Wyoming coordinate system,  
west central zone.  
1000 meter Universal Transverse Mercator grid  
ticks, zone 12, shown in blue.  
INTERMEDIATE EDITION  
Modification to USGS base map prepared by the  
Geological Survey Center from 1960 aerial  
photography and 1962 correction guides furnished  
by the Rocky Mountain Region.  
Land use revised according to additional  
Forest Service evidence.

- CONTOUR INTERVAL 40 FEET  
DATUM = MEAN SEA LEVEL  
SCALE 1:24,000
- National Forest Boundary
  - Alienated Land within the  
National Forest Boundary
  - TOWNSHIP AND SECTION LINE CLASSIFICATION
  - Surveyed Location Reliable
  - Surveyed Location Unreliable
  - Unsurveyed, Projection by ILM
  - Primary Highway
  - Secondary Highway
  - Improved Lightly
  - Unimproved Dirt
  - Trail
  - Interstate Highway
  - U.S. Highway
  - State Highway
  - Forest Road
  - Forest Trail

SHOSHONE NATIONAL FOREST DEAD INDIAN PEAK NW, WYO.  
NAD 83 11-110387-7.5  
1994  
9 of 25



USDA FOREST SERVICE  
Rocky Mountain Region  
SHOSHONE NATIONAL FOREST  
WYOMING  
**NORTH ABSAROKA  
WILDERNESS**

LEGEND

- WILDERNESS BOUNDARY
- FOREST BOUNDARY
- NATIONAL, STATE OR PROVINCE LINE
- COUNTY LINE

The exterior boundary of North Absaroka Wilderness, Shoshone National Forest, Rocky Mountain Region, October 1964, as added to the National Wilderness Preservation System by Public Law 88-277, 9/2/64.

SCALE 1:24,000

CONTOUR INTERVAL 40 FEET  
DARKER IN NEAR SEA LEVEL

LEGEND

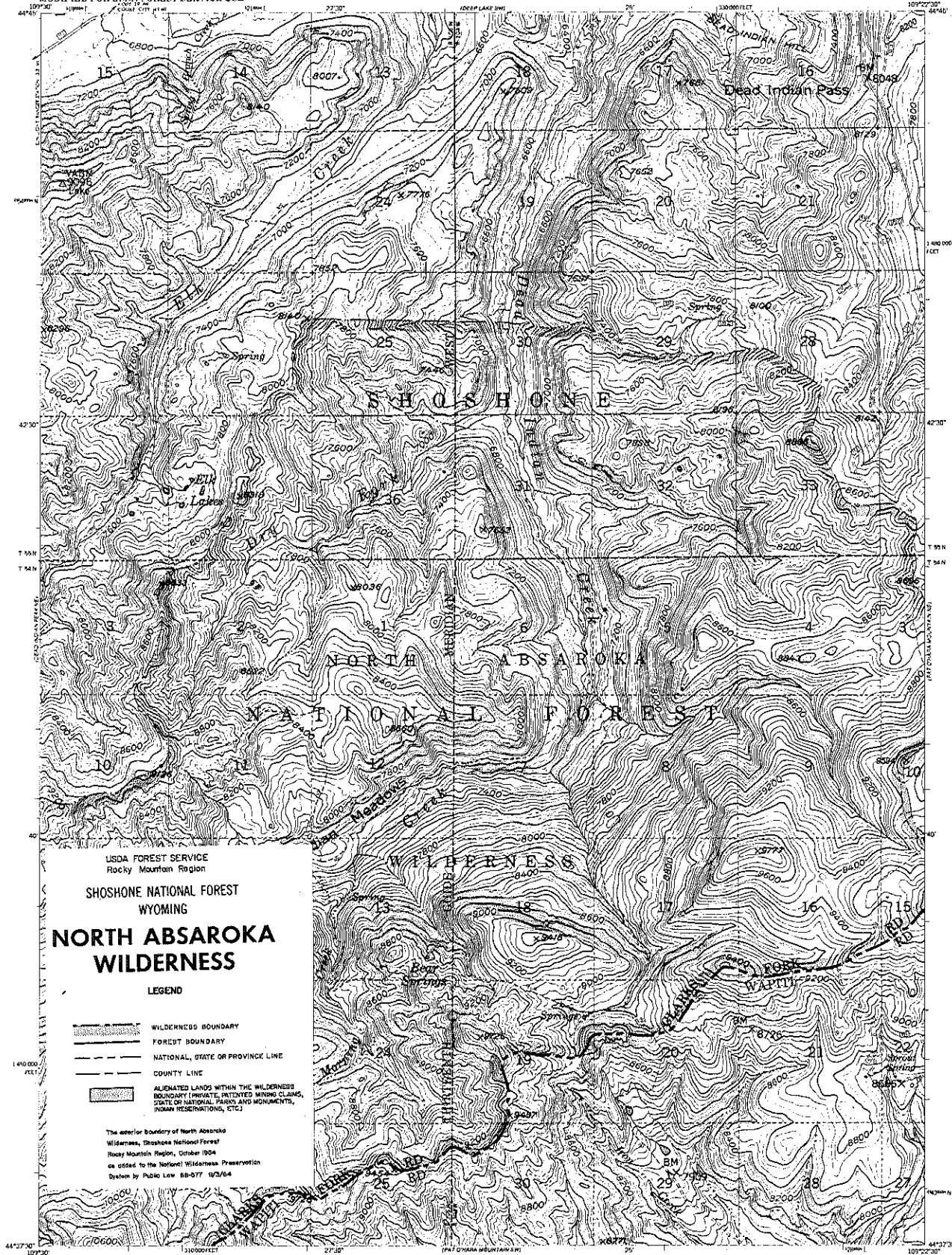
- National Forest Boundary
- Reserved Land within the National Forest Boundary
- TOWNSHIP AND SECTION LINE CLASSIFICATION
- Surveyed Location Reliable
- Surveyed Location Unreliable
- Unsurveyed Protection by ULM
- Primary Highway
- Secondary Highway
- Improved Light Duty
- Unimproved Dirt
- Trail
- Interstate Highway
- U.S. Highway
- State Highway
- Forest Road
- Forest Trail



Topographic map prepared by the U.S. Geological Survey  
Control by USGS and USFWS  
Topography by photogrammetric methods from aerial  
photographs taken 1941. First check 1956.  
Photocopy projection. 1927 North American datum.  
10,000 foot and based on Wyoming coordinate system.  
1000 meter Universal Transverse Mercator grid  
lines, zone 12, shown in blue.  
INTERMEDIATE EDITION  
Modifications to USGS base map prepared by the  
Geological Survey Office from 1960 aerial  
photography and 1962 correction plan, furnished by  
the U.S. Mountain Station.  
Unpublished according to additional  
found in section 1000.

UNITED STATES  
DEPARTMENT OF INTERIOR  
GEOLOGICAL SURVEY  
MODIFIED FOR USDA FOREST SERVICE USE

PAT O'HARA MOUNTAIN NW QUADRANGLE  
WYOMING  
7.5 MINUTE SERIES (TOPOGRAPHIC)



USDA FOREST SERVICE  
Rocky Mountain Region  
SHOSHONE NATIONAL FOREST  
WYOMING  
**NORTH ABSAROKA  
WILDERNESS**

LEGEND

- WILDERNESS BOUNDARY
- FOREST BOUNDARY
- NATIONAL, STATE OR PROVINCE LINE
- COUNTY LINE
- ALIENATED LANDS WITHIN THE WILDERNESS BOUNDARY (PRIVATE, PATENTED MINING CLAIMS, STATE OR NATIONAL PARKS AND MONUMENTS, INDIAN RESERVATIONS, ETC.)

The exterior boundary of North Absaroka Wilderness, Shoshone National Forest, Rocky Mountain Region, October 1904 as added to the National Wilderness Preservation System by Public Law 88-577 10/2/64

Base map prepared by the U.S. Geological Survey  
Control by USGS and USGAS  
Topography by photogrammetric methods from aerial photographs taken 1948. First check 1949.  
Polyconic projection 1:24,000 North American datum 1929 and based on Wyoming coordinate system.  
Wood crystal zone  
1:24,000 meter Universal Transverse Mercator and NAD 83 zone 12 shown in blue  
INTERMEDIATE EDITION  
Modification to USGS base map prepared by the Geomatics Service Center from 1:24,000 aerial photography and 1:24,000 correction grids furnished by the Rocky Mountain Region  
Landmark revised according to additional Forest Service evidence

- SCALE 1:24,000  
CONTOUR INTERVAL 40 FEET  
DATUM IS MEAN SEA LEVEL
- |  |                     |                    |
|--|---------------------|--------------------|
| National Forest Boundary                           | Private Highway     | Interstate Highway |
| Alienated Land within the National Forest Boundary | Secondary Highway   | U.S. Highway       |
| TOWNSHIP AND SECTION LINE CLASSIFICATION           | Improved Light Duty | State Highway      |
| Surveyed Location Reliable                         | Unimproved Dirt     | Forest Road        |
| Surveyed Location Unreliable                       | Trail               | Forest Trail       |
| Unsurveyed, Protection by NLM                      |                     |                    |

SHOSHONE NATIONAL FOREST  
PAT O'HARA MOUNTAIN NW, WYO.  
\* NAD 83 UTM 12N 109E 7.5  
1949  
11 of 25

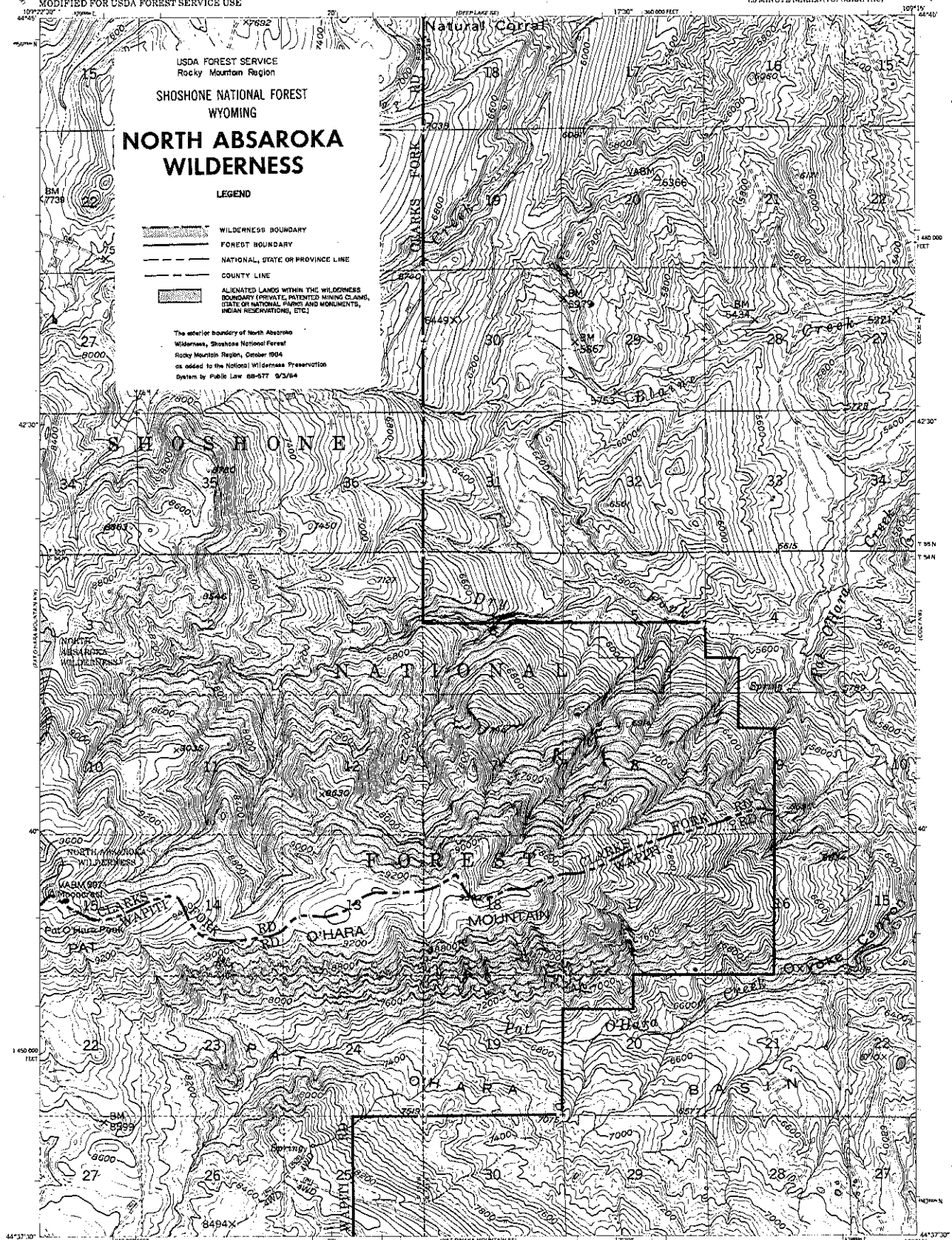


USDA FOREST SERVICE  
Rocky Mountain Region  
SHOSHONE NATIONAL FOREST  
WYOMING  
**NORTH ABSAROKA  
WILDERNESS**

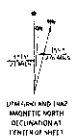
LEGEND

- WILDERNESS BOUNDARY  
FOREST BOUNDARY  
NATIONAL, STATE OR PROVINCE LINE  
COUNTY LINE  
ALIENATED LANDS WITHIN THE WILDERNESS  
BOUNDARY (PRIVATE, PATENTED MINING CLAIMS,  
STATE OR NATIONAL PARKS AND MONUMENTS,  
MEAN RESERVATIONS, ETC.)

The exterior boundary of North Absaroka  
Wilderness, Shoshone National Forest  
Rocky Mountain Region, October 1904  
as added to the National Wilderness Preservation  
System by Public Law 88-577 9/3/64



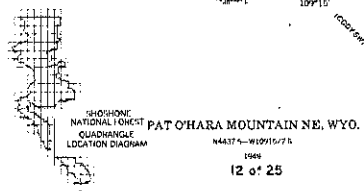
These maps prepared by the U.S. Geological Survey  
Control to USGS and USGS  
Topography by photogrammetric methods from aerial  
photographs taken 1944. Field check 1949  
Projection: 1927 North American datum  
10,000-foot and based on Wyoming coordinate system,  
west central zone  
1000 meter Universal Transverse Mercator and  
local zone 10, shown in blue  
INTERMEDIATE EDITION  
Modified to USGS base map prepared by the  
Geological Survey Center from 1980 aerial  
photography and 1982. Section and/or furnished  
by the Rocky Mountain Region  
Landmark revised according to additional  
USGS Service evidence



- LEGEND  
National Forest Boundary  
Alienated Land within the  
National Forest Boundary  
TOWNSHIP AND SECTION LINE CLASSIFICATION  
Surveyed Location Unavailable  
Unsurveyed, Projection by ILM

- Primary Highway  
Secondary Highway  
Improved Light Duty  
Unimproved Dirt  
Trail

- Intermediate Highway  
U.S. Highway  
State Highway  
Forest Road  
Forest Trail



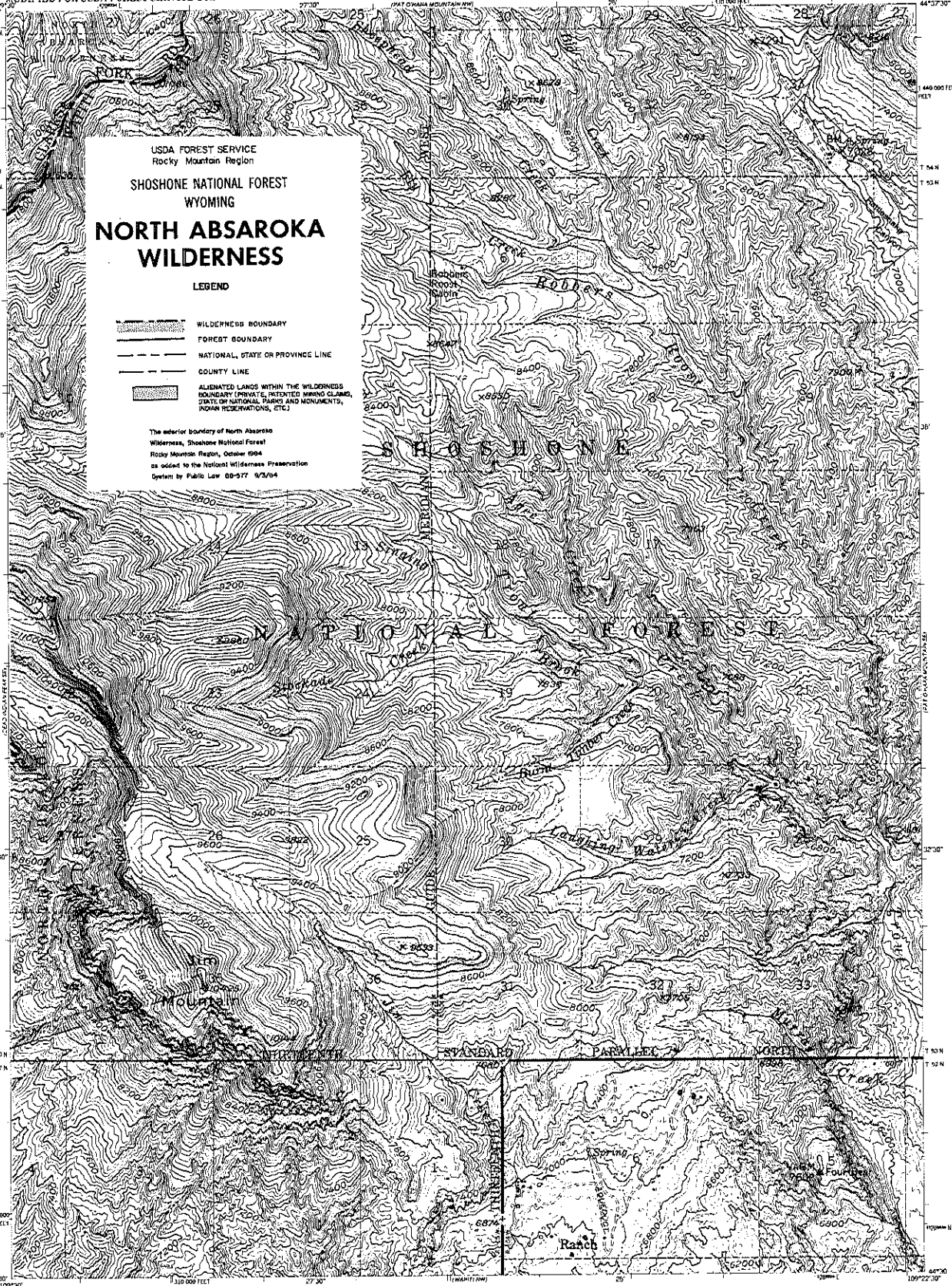


USDA FOREST SERVICE  
Rocky Mountain Region  
**SHOSHONE NATIONAL FOREST**  
WYOMING  
**NORTH ABSAROKA WILDERNESS**

LEGEND

- WILDERNESS BOUNDARY
- FOREST BOUNDARY
- NATIONAL, STATE OR PROVINCE LINE
- COUNTY LINE
- ALIENATED LANDS WITHIN THE WILDERNESS BOUNDARY (PRIVATE, RETAINED MINING CLAIMS, STATE OR NATIONAL, BUREAU OF LAND MANAGEMENT, INDIAN RESERVATIONS, ETC.)

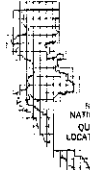
The western boundary of North Absaroka Wilderness, Shoshone National Forest, Rocky Mountain Region, Census 1984 is added to the National Wilderness Preservation System by Public Law 98-577 9/5/84



Date map prepared by the U.S. Geological Survey  
Control by USGS and USFS  
Topography by photogrammetric methods from aerial photographs taken 1946, field check 1960  
Polyconic projection, 1927 North American datum  
10,000 foot grid based on Wyoming coordinate system,  
with central meridian  
1000 meter Universal Transverse Mercator and  
ticks, zone 12, shown in blue  
INTERMEDIATE EDITION  
Modifications to USGS base map prepared by the  
Geographic Service Center from 1960 aerial  
photography and 1962 correction grid, furnished  
by the Rocky Mountain Region  
Landmark revised according to additional  
Forest Service evidence



- National Forest Boundary
- Alienated Land within the National Forest Boundary
- TOWNSHIP AND SECTION LINE CLASSIFICATION
- Surveyed, Location Reliable
- Unsurveyed, Location Unreliable
- Unsurveyed, Protection by BLM
- Primary Highway
- Secondary Highway
- Improved Light Duty
- Unimproved Dirt
- Trail
- Interstate Highway
- U.S. Highway
- State Highway
- Forest Road
- Forest Trail



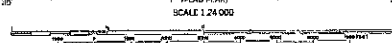
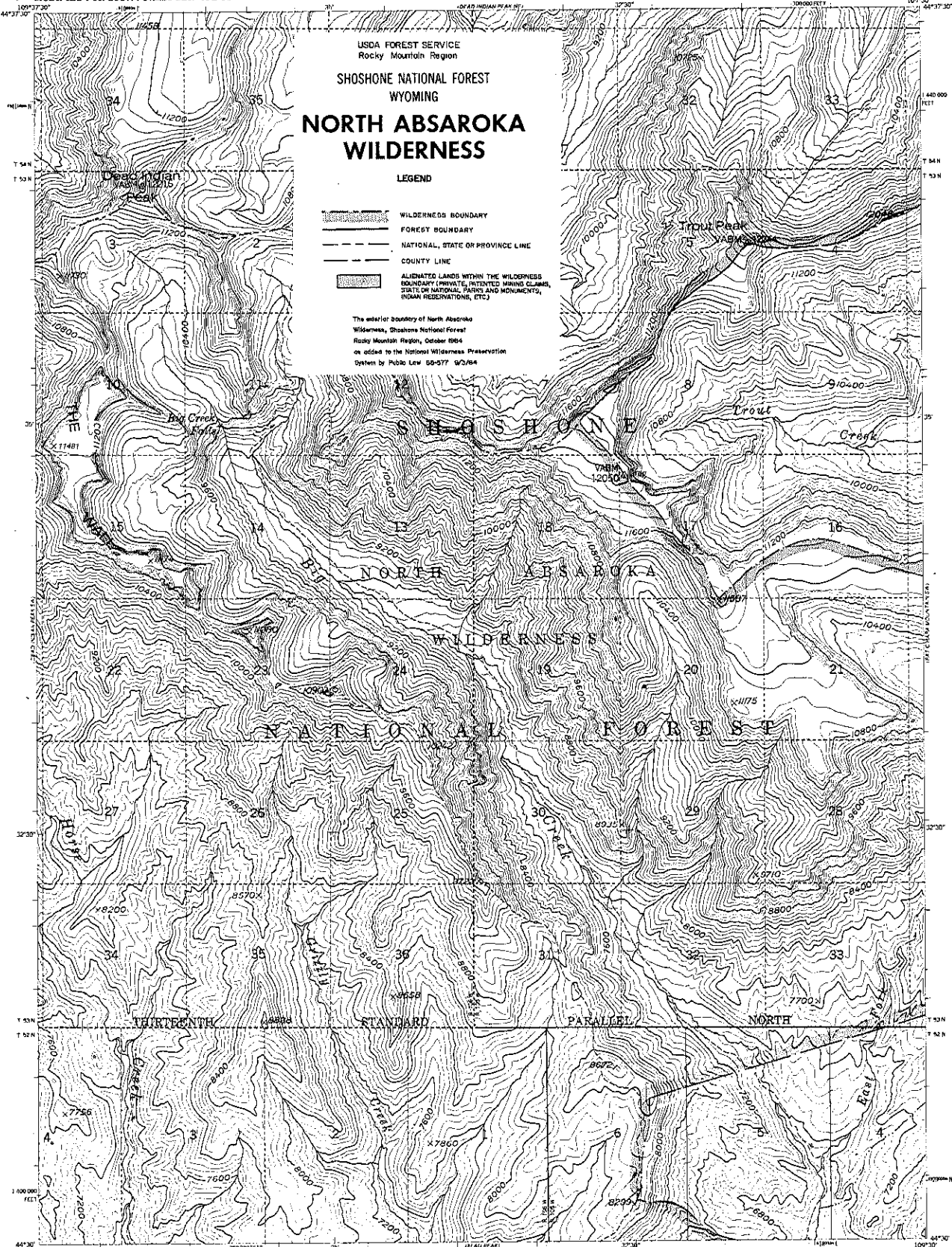
SHOSHONE NATIONAL FOREST  
PAT OHARA MOUNTAIN SW, WYO.  
QUADRANGLE  
LOCATION DIAGRAM  
NAD83-WID002-1/2.5  
2465

USDA FOREST SERVICE  
Rocky Mountain Region  
**SHOSHONE NATIONAL FOREST**  
WYOMING  
**NORTH ABSAROKA WILDERNESS**

LEGEND

- WILDERNESS BOUNDARY
- FOREST BOUNDARY
- NATIONAL, STATE OR PROVINCE LINE
- COUNTY LINE
- ALIENATED LANDS WITHIN THE WILDERNESS BOUNDARY (PRIVATE, PATENTED MINING CLAIMS, STATE OR NATIONAL PARKS AND MONUMENTS, ROAD RESERVATIONS, ETC.)

The exterior boundary of North Absaroka Wilderness, Shoshone National Forest, Rocky Mountain Region, October 1964, as added to the National Wilderness Preservation System by Public Law 88-577, 9/2/64.



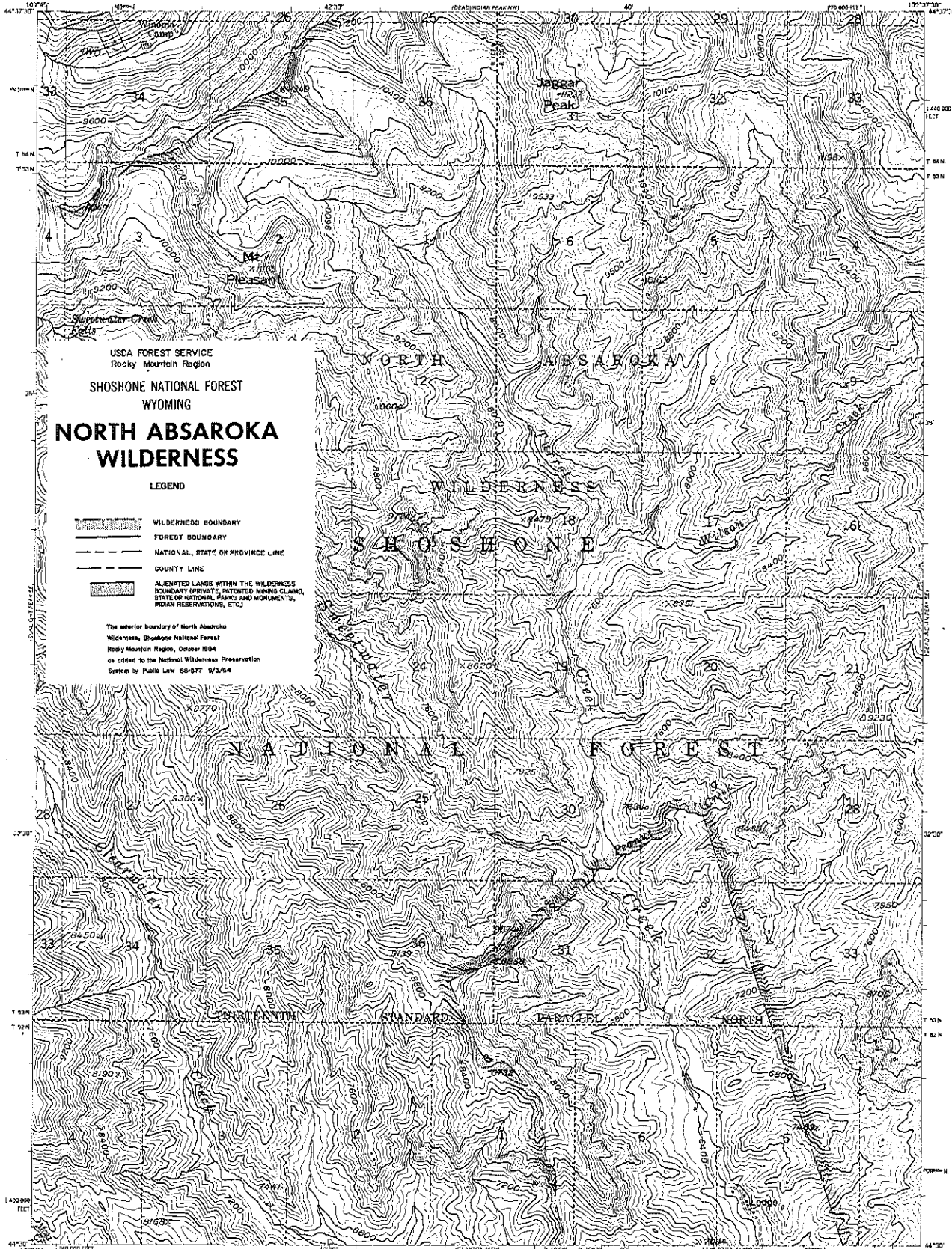
CONTOUR INTERVAL 80 FEET  
DAUM IS MEAN SEA LEVEL

- |   |                     |                      |
|---|---------------------|----------------------|
| National Forest Boundary                            | Primary Highway     | Intermediate Highway |
| Alienated Lands within the National Forest Boundary | Secondary Highway   | U.S. Highway         |
| TOWNSHIP AND SECTION LINE CLASSIFICATION            | Improved Light Duty | State Highway        |
| Surveyed, Location Reliable                         | Unimproved Dirt     | Forest Road          |
| Surveyed, Location Unreliable                       | Trail               | Forest Trail         |
| Unsurveyed, Projection by Film                      |                     |                      |



SHOSHONE NATIONAL FOREST  
QUADRANGLE LOCATION DIAGRAM  
DEAD INDIAN PEAK SE, WYO.  
N4320-W3230/7.5  
1956  
14 of 25

Date map prepared by the U.S. Geological Survey  
Control by USGS and USFS  
Topography by photogrammetric methods from aerial photographs taken 1949. Field check 1955.  
Horizontal projection: 1957 North American datum, 10,000-foot grid based on Wyoming coordinate system, west central zone.  
1000-meter Universal Transverse Mercator grid ticks, zone 12, shown in blue.  
INTERMEDIATE EDITION  
Modification by USGS base map prepared by the Geographic Survey Center from 1962 aerial photographs and 1962 correction sheets furnished by the Rocky Mountain Region.  
Landsat revised according to additional Forest Service evidence.



USDA FOREST SERVICE  
Rocky Mountain Region  
SHOSHONE NATIONAL FOREST  
WYOMING  
**NORTH ABSAROKA  
WILDERNESS**

LEGEND

- WILDERNESS BOUNDARY
- FOREST BOUNDARY
- NATIONAL, STATE OR PROVINCE LINE
- COUNTY LINE
- ALIENATED LANDS WITHIN THE WILDERNESS  
BOUNDARY (PRIVATE, PATENTED MINING CLAIMS,  
STATE OF NATIONAL, PARKS AND MONUMENTS,  
INDIAN RESERVATIONS, ETC.)

The exterior boundary of North Absaroka  
Wilderness, Shoshone National Forest  
Rocky Mountain Region, October 1954  
as added to the National Wilderness Preservation  
System by Public Law 56-377 9/3/54

- SCALE 1:24,000  
CONTOUR INTERVAL 80 FEET  
DATUM IS MEAN SEA LEVEL
- |   |                       |
|---|-----------------------|
| National Forest Boundary                              | Primary Highway       |
| Alienated Land within the<br>National Forest boundary | Secondary Highway     |
| Township and Section Line Classification              | Improved Light Duty   |
| Surveyed Location Unavailable                         | Unimproved Light Duty |
| Surveyed Location Unavailable                         | Unimproved Light Duty |
| Unsurveyed Protection by RUM                          | Trail                 |

- SHOSHONE NATIONAL FOREST  
DEAD INDIAN PEAK SW, WYO.  
15 of 25
- |                    |              |
|--------------------|--------------|
| Interstate Highway | Forest Road  |
| U.S. Highway       | Forest Trail |
| State Highway      |              |

Base map prepared by the U.S. Geological Survey  
Control by USGS and USGS  
Topography by photogrammetric methods from aerial  
photographs taken 1949 Field check 1956  
Projection: 1927 North American datum  
10000 feet and based on Wyoming coordinate system,  
west central zone  
1000 meter Universal Transverse Mercator and  
NAD 83, zone 12 shown in blue  
INTERMEDIATE EDITION  
Modification to USGS have map prepared by the  
Geological Survey Center from 1949 aerial  
photography and 1962 correction added furnished  
by the Rocky Mountain Region  
Landmark revised according to additional  
Forest Service evidence



USDA FOREST SERVICE  
Rocky Mountain Region  
SHOSHONE NATIONAL FOREST  
WYOMING  
**NORTH ABSAROKA  
WILDERNESS**

LEGEND

- WILDERNESS BOUNDARY
- FOREST BOUNDARY
- NATIONAL, STATE OR PROVINCE LINE
- COUNTY LINE
- ALIENATED LANDS WITHIN THE WILDERNESS  
BOUNDARY (PRIVATE, PATENTED MINING CLAIMS,  
STATE OR NATIONAL PARKS AND MONUMENTS,  
INDIAN RESERVATIONS, ETC.)

The interior boundary of North Absaroka  
Wilderness, Shoshone National Forest  
Rocky Mountain Region, October 1984  
as added to the National Wilderness Preservation  
System by Public Law 98-577 9/3/84

SHOSHONE

NORTH ABSAROKA  
WILDERNESS

NATIONAL FOREST

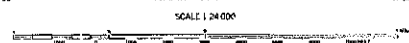
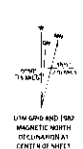
THIRTEENTH Mountain

STANDARD

LABAUDE

Monument  
North Mountain

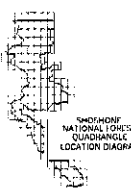
Base map prepared by the U. S. Geological Survey  
Control by USGS and USCAGS  
Topography by photogrammetric methods from aerial  
photographs taken 1949 and 1953. Tied check 1956  
Polyconic projection 1427 North American datum  
10,000 foot grid based on Wyoming coordinate system,  
west central zone  
1000 meter Universal Transverse Mercator grid  
NAD 83, zone 12, shown in blue  
INTERMEDIATE EDITION  
Modification to USGS base map prepared by the  
Geographic Names Center from 1980 aerial  
photography and 1982 correction sheets furnished by  
the Rocky Mountain Region  
Landmark revised according to additional  
Forest Service evidence



- National Forest boundary
- Alienated land within the  
National Forest boundary
- TOWNSHIP AND SECTION LINE CLARIFICATION
- Surveyed, Location Reliable
- Surveyed, Location Unreliable
- Unsurveyed, Projection by DLM

- Primary Highway
- Secondary Highway
- Improved Light Duty
- Unimproved Out
- Trail

- Interstate Highway
- U.S. Highway
- State Highway
- Forest Road
- Forest Trail



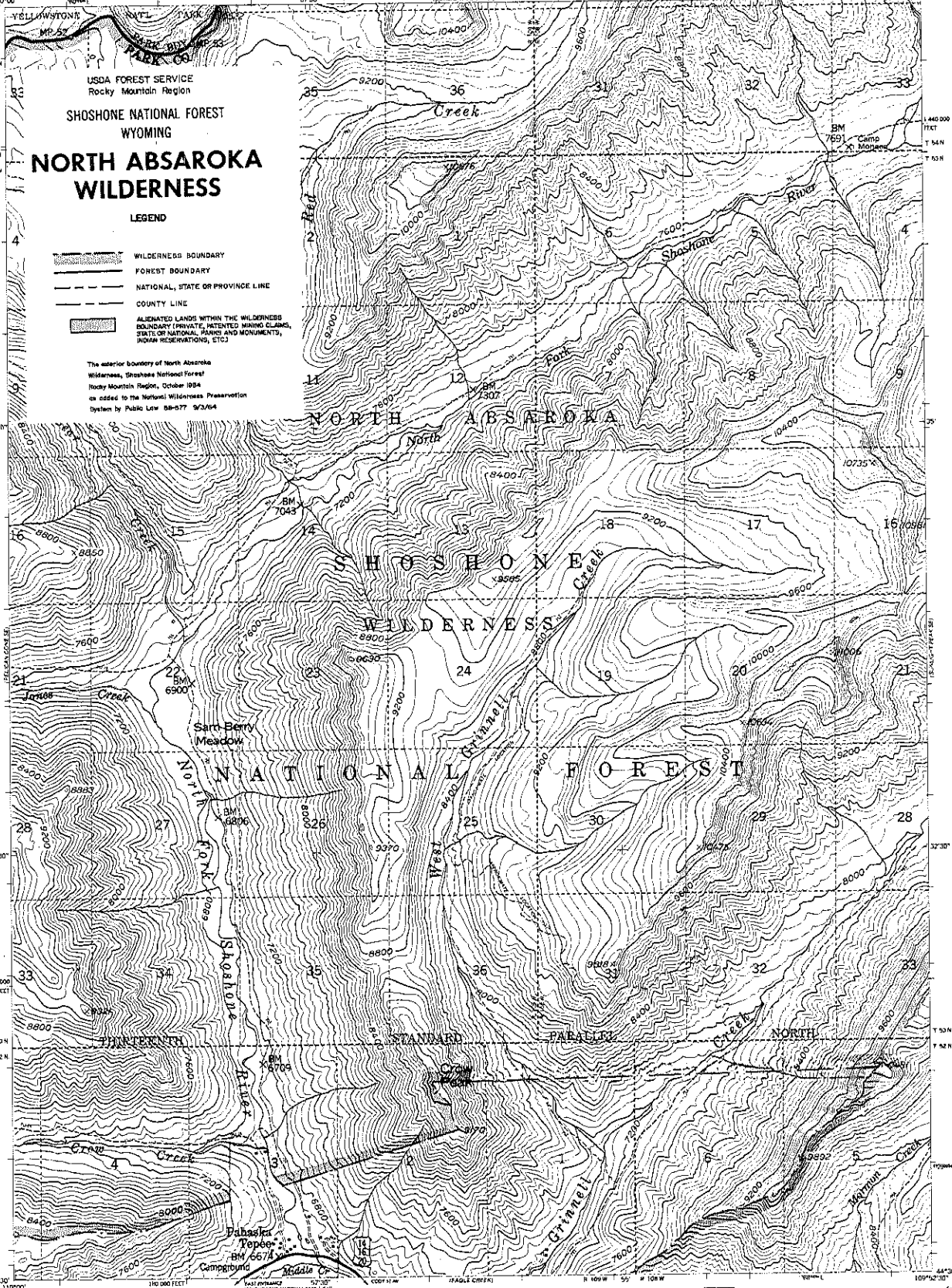
SUNLIGHT PEAK SE, WYO.  
NAD83-WYOMING 7.5  
1985  
16 of 25

USDA FOREST SERVICE  
Rocky Mountain Region  
SHOSHONE NATIONAL FOREST  
WYOMING  
**NORTH ABSAROKA  
WILDERNESS**

LEGEND

- WILDERNESS BOUNDARY
- FOREST BOUNDARY
- NATIONAL, STATE OR PROVINCE LINE
- COUNTY LINE
- ALIENATED LANDS WITHIN THE WILDERNESS BOUNDARY (PRIVATE, PATENTED MINING CLAIMS, STATE OR NATIONAL PARKS AND MONUMENTS, INDIAN RESERVATIONS, ETC.)

The exterior boundary of North Absaroka Wilderness, Shoshone National Forest, Rocky Mountain Region, October 1984 as added to the National Wilderness Preservation System by Public Law 98-577 9/3/84



This map prepared by the U.S. Geological Survey  
Control by USGS and USFWS  
Topography by photogrammetric methods from aerial  
photographs taken 1949 and 1953. Field check 1955  
Polyconic projection. 1927 North American datum.  
10,000-foot grid based on Wyoming coordinate system,  
west central zone.  
1000-meter Universal Transverse Mercator and  
NAD 83 zone 12 shown in blue  
INTERMEDIATE EDITION  
Modifications to USGS base map prepared by the  
Geographic Names Center from 1960 aerial  
photorevision and 1965 correction sheet furnished  
by the Rocky Mountain Region  
Landmark revised according to additional  
forms Service evidence



- CONTINUOUS INTERVAL 80 FEET  
NATIONAL GEODETIC VERTICAL DATUM OF 1929
- LEGEND
- National Forest Boundary
  - Alienated Lands within the National Forest Boundary
  - TOWNSHIP AND SECTION LINE CLASSIFICATION
  - Surveyed Location Unreliable
  - Unsurveyed, Protection by BLM
  - Primary Highway
  - Secondary Highway
  - Improved Light Duty
  - Unimproved Dm
  - Trail
  - Interstate Highway
  - U.S. Highway
  - State Highway
  - Forest Road
  - Forest Trail








SHOSHONE NATIONAL FOREST  
QUADRANGLE LOCATION DIAGRAM  
SUNLIGHT PEAK SW, WYO.  
N4430-W1092-4/7.5  
1976  
176125





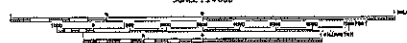
SHOSHONE NATIONAL FOREST  
WYOMING  
**NORTH ABSAROKA  
WILDERNESS**

### LEGEND

- |  |  |
|--|--|
|  | WILDERNESS BOUNDARY  |
|  | FOREST BOUNDARY  |
|  | NATIONAL, STATE OR PROVINCE LINE   |
|  | COUNTY LINE  |
|  | ALIENATED LANDS WITHIN THE WILDERNESS BOUNDARY (PRIVATE, PATENTED MINING CLAIMS, STATE OR NATIONAL PARKS AND MONUMENTS, INDIAN RESERVATIONS, ETC.) |

The exterior boundary of North Absaroka  
Wilderness, Shoshone National Forest  
Rocky Mountain Region, October 1984  
as added to the National Wilderness Preservation  
System by Public Law 88-577 9/3/84

07°30"  
Base map prepared by the U.S. Geological Survey  
Control by USGS and USGS/AGS  
Topography by photogrammetric methods from aerial  
photographs taken 1954 Field check 1959  
Polyconic projection, 1927 North American datum  
10,000-foot grid based on Wyoming coordinate system,  
west of central and west zone  
100,000-foot Universal Transverse Mercator grid  
ticks, zone 12, shown in blue  
INTERMEDIATE EDITION  
Modification to USGS base map prepared by the  
Geological Survey of Canada from 1990 aerial  
photography and 1990 correction quads furnished  
by the Rocky Mountain Region  
Landline revised according to additional  
Forest Service evidence

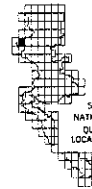


CONTOUR INTERVAL 80 FEET  
DATUM IS MEAN SEA LEVEL

- \_\_\_\_\_ National Forest Boundary  
 \_\_\_\_\_ Alienated Land within the  
 \_\_\_\_\_ National Forest Boundary  
**TOWNSHIP AND SECTION LINE CLASSIFICATION**  
 \_\_\_\_\_ Surveyed, Location Reliable  
 \_\_\_\_\_ Surveyed, Location Unreliable  
 \_\_\_\_\_ Unsurveyed, Protraction by BLM

- LEGEND
- |  |                     |
|--|---------------------|
|  | Primary Highway     |
|  | Secondary Highway   |
|  | Improved Light Duty |
|  | Unimproved Dirt     |
|  | Trail               |

-  Interstate Highway
-  U.S. Highway
-  State Highway
-  Forest Road
-  Forest Trail

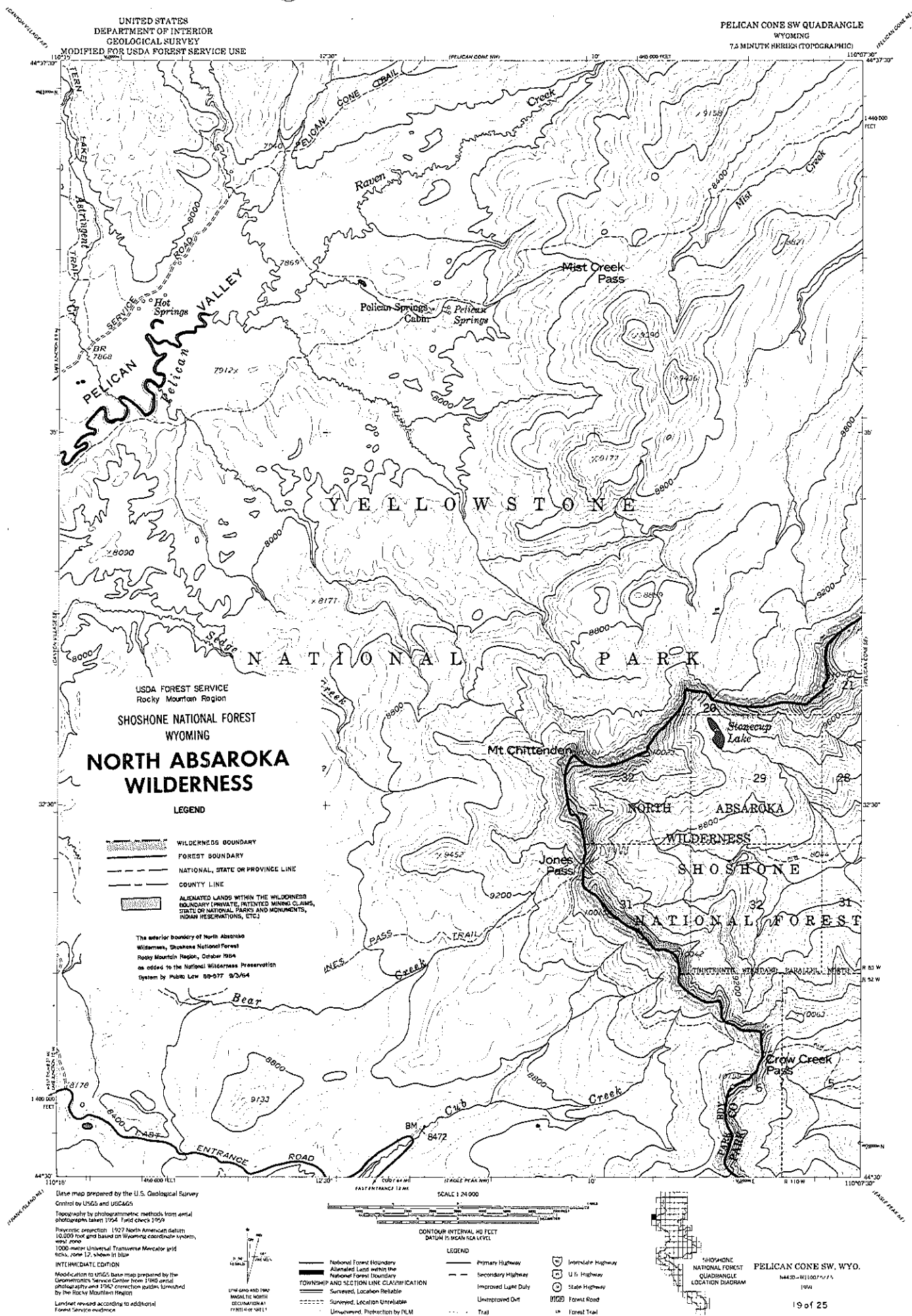


SHOSHONE  
NATIONAL FOREST  
QUADRANGLE  
LOCATION DIAGRAM

PELICAN CONE SE, WYO.

11-634

18 of 25



USDA FOREST SERVICE  
Rocky Mountain Region  
SHOSHONE NATIONAL FOREST  
WYOMING  
**NORTH ABSAROKA  
WILDERNESS**

LEGEND

- WILDERNESS BOUNDARY
- FOREST BOUNDARY
- NATIONAL, STATE OR PROVINCE LINE
- COUNTY LINE
- ALLOTTED LANDS WITHIN THE WILDERNESS  
BOUNDARY (PRIVATE, PATENTED MINING CLAIMS,  
STATE OR NATIONAL PARKS AND MONUMENTS,  
INDIAN RESERVATIONS, ETC.)

The exterior boundary of North Absaroka  
Wilderness, Shoshone National Forest  
Rocky Mountain Region, October 1984  
as added to the National Wilderness Preservation  
System by Public Law 98-577 9/3/84

YELLOWSTONE

NATIONAL

SIGNAL

PARK

Brimstone  
Basin

Avalanche  
Peak

Grizzly  
Peak

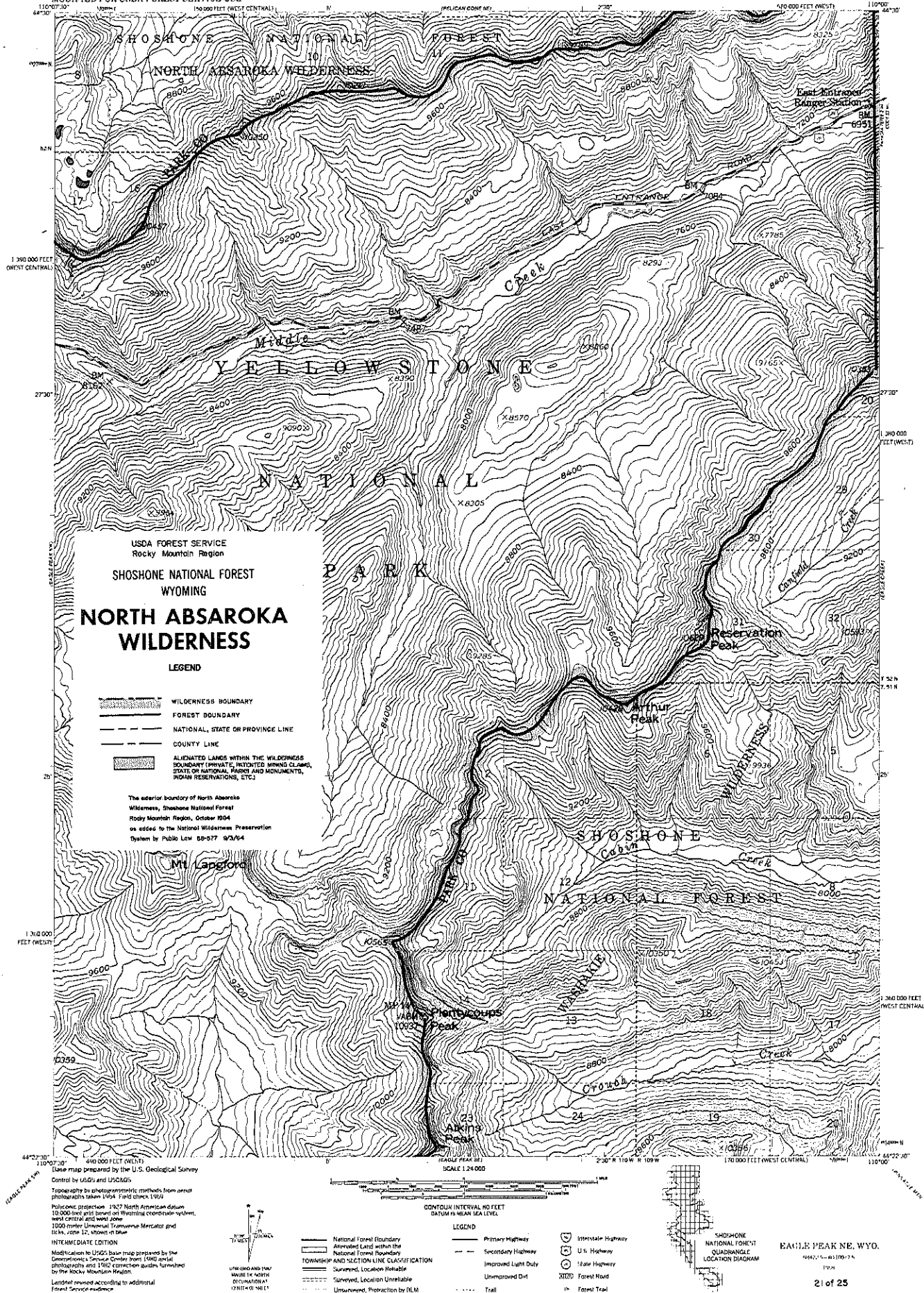
Top Notch  
Peak

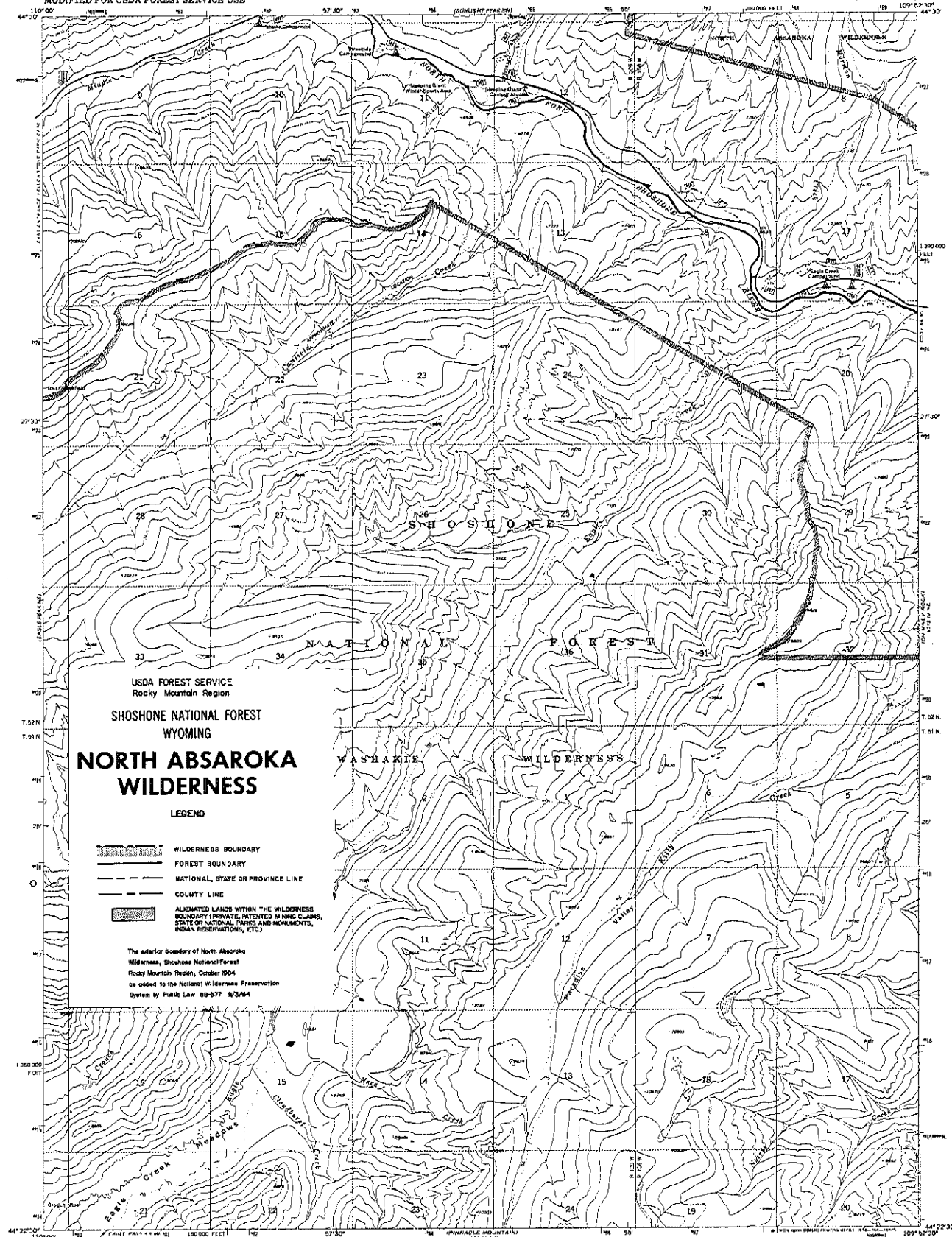
Mt. Doane

Mt. Stevenson



SHOSHONE NATIONAL FOREST  
EAGLE PEAK NW, WYOMING





USDA FOREST SERVICE  
Rocky Mountain Region  
SHOSHONE NATIONAL FOREST  
WYOMING  
**NORTH ABSAROKA  
WILDERNESS**

LEGEND

- WILDERNESS BOUNDARY
- FOREST BOUNDARY
- NATIONAL, STATE OR PROVINCE LINE
- COUNTY LINE
- ALLOCATED LANDS WITHIN THE WILDERNESS BOUNDARY (PRIVATE, PATENTED MINING CLAIMS, STATE OR NATIONAL PARKS AND MONUMENTS, INDIAN RESERVATIONS, ETC.)

The exterior boundary of North Absaroka Wilderness, Shoshone National Forest, Rocky Mountain Region, October 1904 as added to the National Wilderness Preservation System by Public Law 89-577 9/3/64

Base map prepared by the U.S. Geological Survey  
Control by USGS and USGARS  
Topography by photogrammetry methods from aerial photographs taken 1956. Field checked 1970  
Projection: 1927 North American datum  
10,000-foot grid based on Wyoming coordinate system, west central zone  
1000-meter Universal Transverse Mercator grid lines, zone 12, shown in blue  
Modification to USGS base map prepared by the Department of Interior from 1970 aerial photography and 1982 correction points furnished by Rocky Mountain Region  
Legend revised according to additional Forest Service evidence

UTM ZONE 12N  
MAGNETIC NORTH  
WILMINGTON  
CENTER OF SHEET

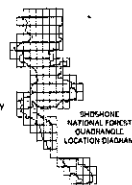
- National Forest Boundary
- Allocated Land within the National Forest Boundary
- TOWNSHIP AND SECTION LINE CLASSIFICATION
- Surveyed, Location Reliable
- Surveyed, Location Unreliable
- Unsurveyed, Protraction by GLM

CONTOUR INTERVAL 40 FEET  
DATUM IS MEAN SEA LEVEL

LEGEND

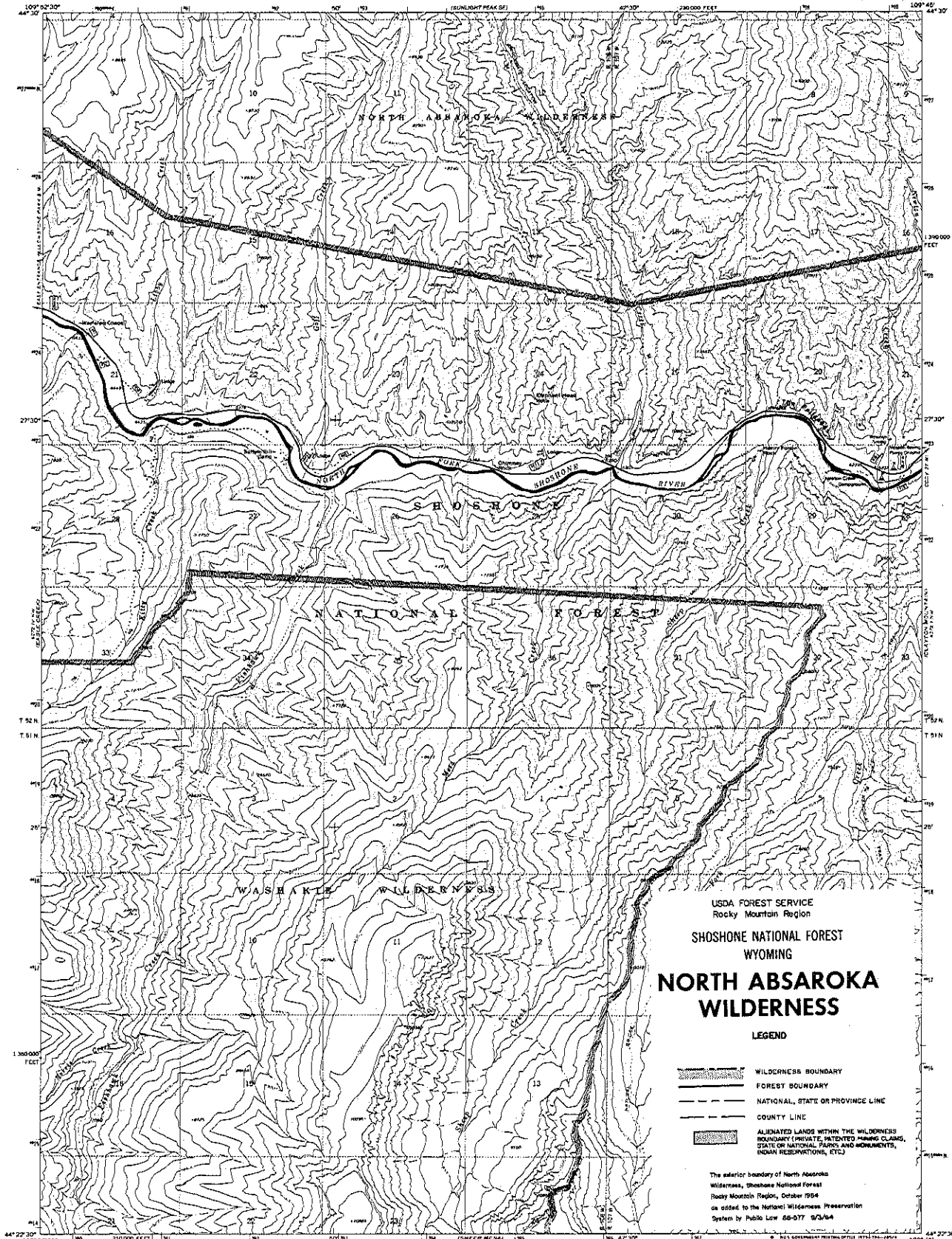
- Primary Highway
- Secondary Highway
- Improved Light Duty
- Unimproved Dirt
- Trail

- Interstate Highway
- U.S. Highway
- State Highway
- Forest Road
- Forest Trail



EAGLE CREEK, WYO.  
NAD27 5-W-10075-7 N  
2709  
DMA 4075 11 NW-SERIES 1074  
22 of 25





USDA FOREST SERVICE  
Rocky Mountain Region

SHOSHONE NATIONAL FOREST  
WYOMING

## NORTH ABSAROKA WILDERNESS

### LEGEND

- WILDERNESS BOUNDARY
- FOREST BOUNDARY
- NATIONAL, STATE OR PROVINCE LINE
- COUNTY LINE
- ALIENATED LANDS WITHIN THE WILDERNESS BOUNDARY (PRIVATE, PATENTED MINING CLAIMS, STATE OR NATIONAL PLANS AND MONUMENTS, INDIAN RESERVATIONS, ETC.)

The exterior boundary of North Absaroka  
Wilderness, Shoshone National Forest  
Rocky Mountain Region, October 1984  
as added to the National Wilderness Preservation  
System by Public Law 98-577 9/3/84

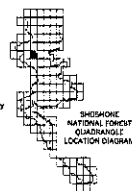
Base map prepared by the U.S. Geological Survey  
Control by USGS and USGS  
Topography by photogrammetric methods from aerial  
photographs taken 1966. Field checked 1970  
Polyconic projection. 1927 North American datum  
30,000-foot grid based on Wyoming coordinate system,  
west central zone.  
1000-meter Universal Transverse Mercator grid ticks,  
zone 12, shown in blue.  
Modification by USGS base map prepared by the  
Geomatics Service Center from 1982 aerial  
photography and 1982 correction guides furnished  
by Rocky Mountain Region.  
Landnet revised according to additional  
Forest Service evidence.

Little Salt and 1982  
Magnetic North  
Declination  
0° 15' 15" E

National Forest Boundary  
Alienated Land within the  
National Forest Boundary  
TOWNSHIP AND SECTION LINE CLASSIFICATION  
Surveyed Location Reliable  
Surveyed Location Unreliable  
Unsurveyed, Protection by BLM

Primary Highway  
Secondary Highway  
Improved Light Duty  
Unimproved Dirt  
Trail

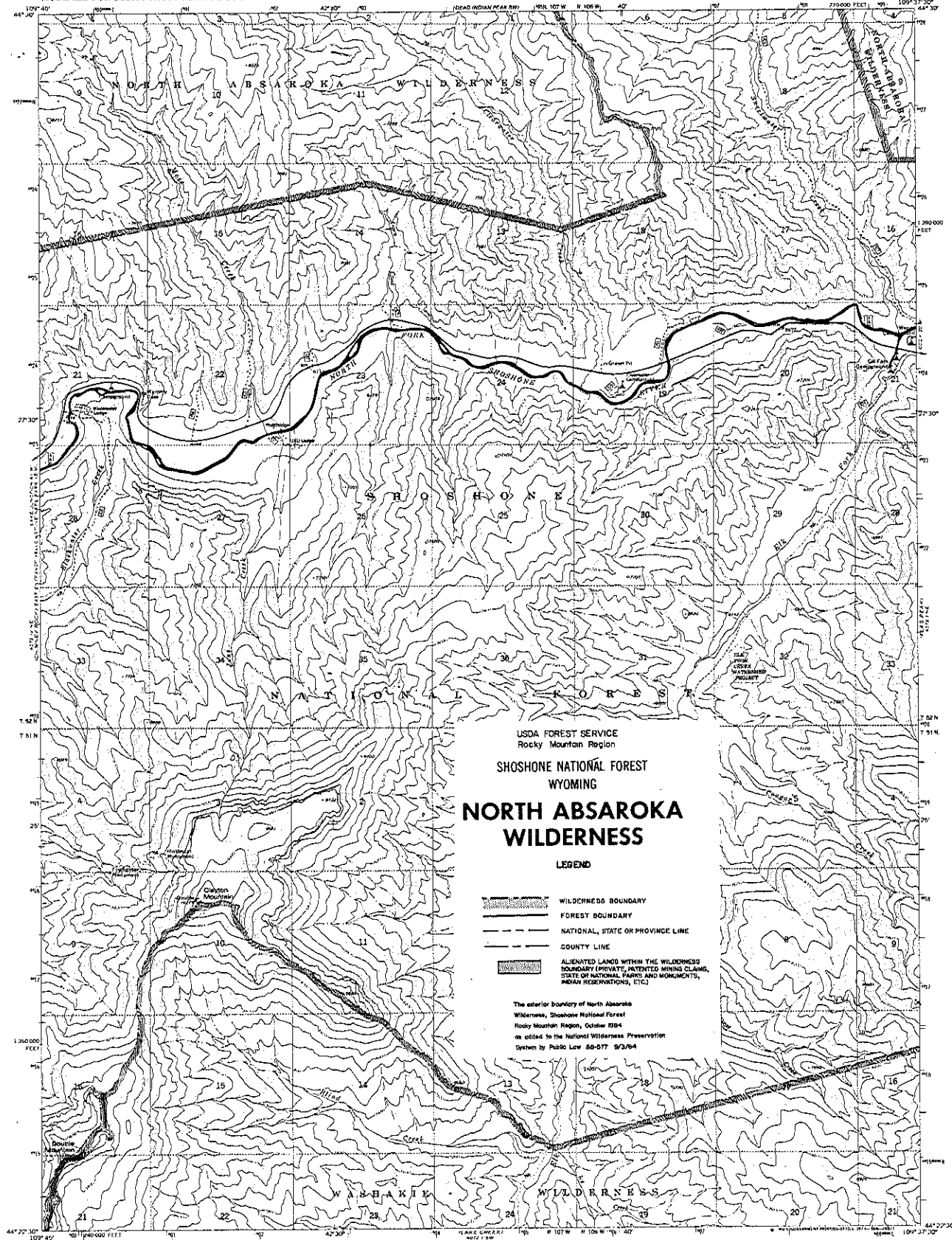
Interstate Highway  
U.S. Highway  
State Highway  
Forest Road  
Forest Trail



CHIMNEY ROCK, WYO.  
N4422.5-W10244.7 5

1970  
OMA 4073 IV NE-SERIES YATA

23 of 25



USDA FOREST SERVICE  
Rocky Mountain Region  
SHOSHONE NATIONAL FOREST  
WYOMING  
**NORTH ABSAROKA  
WILDERNESS**

LEGEND

- WILDERNESS BOUNDARY
- FOREST BOUNDARY
- NATIONAL, STATE OR PROVINCE LINE
- COUNTY LINE
- ALIENATED LANDS WITHIN THE WILDERNESS BOUNDARY (PRIVATE, PATENTED MINING CLAIMS, STATE OR NATIONAL PARKS AND MONUMENTS, INDIAN RESERVATIONS, ETC.)

The exterior boundary of North Absaroka Wilderness, Shoshone National Forest, Rocky Mountain Region, October 1984 as added to the National Wilderness Preservation System by Public Law 98-577 9/3/84

Base map prepared by the U.S. Geological Survey  
Control by USGS and USCAOS  
Topography by photogrammetric methods from aerial photography taken 1960. Field checked 1970.  
Polyconic projection. 1927 North American datum 10,000-foot and based on Wyoming coordinate system, with central meridian 100°-00'00" Universal Transverse Mercator grid ticks, June 12, shown in blue.  
Modification to USGS base map prepared by the Geomorphology Service Center from 1980 aerial photography and 1982 correction grids furnished by Rocky Mountain Region.  
Land use revised according to additional Forest Service guidance.

