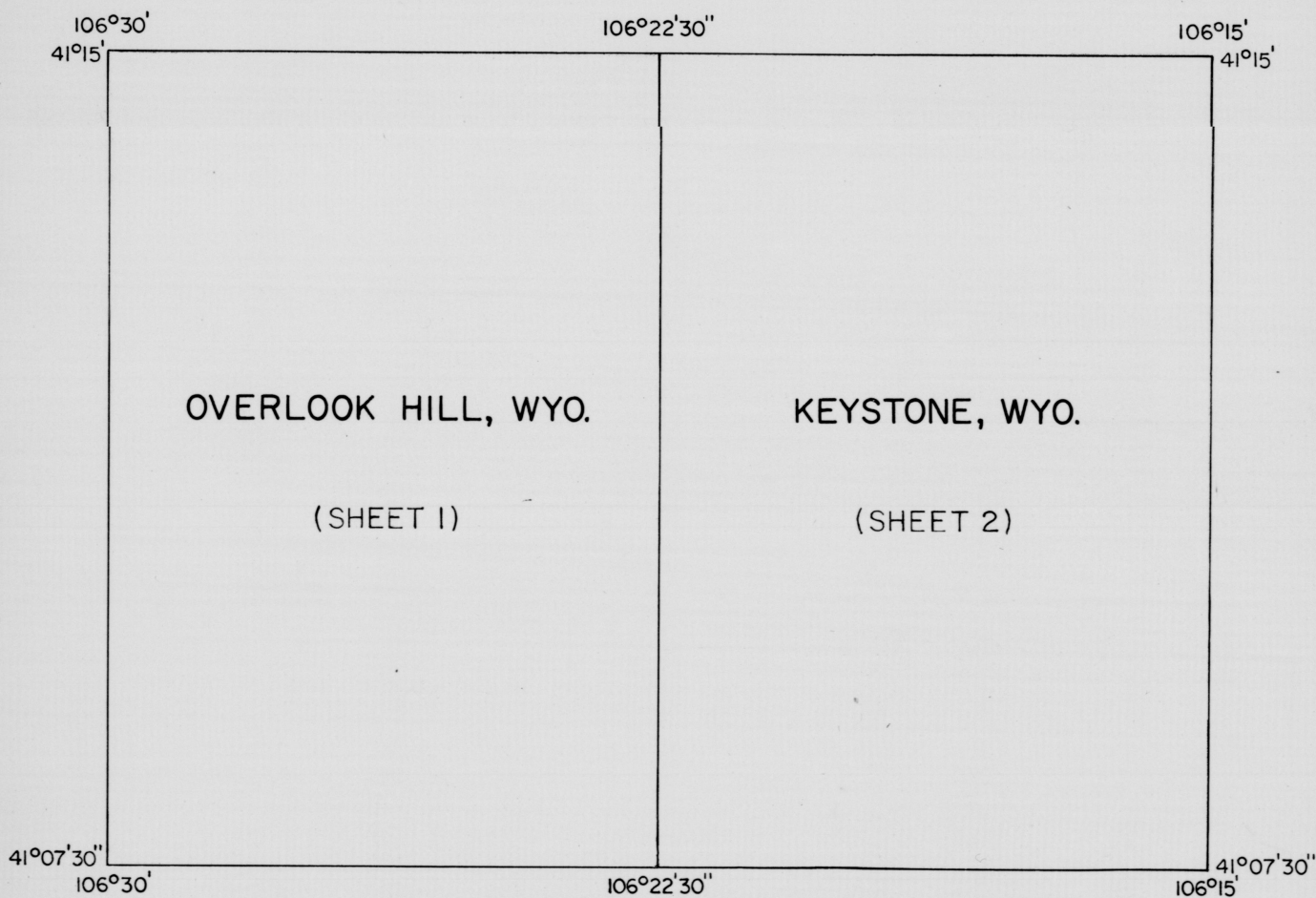


NF 102 - SAVAGE RUN WILDERNESS

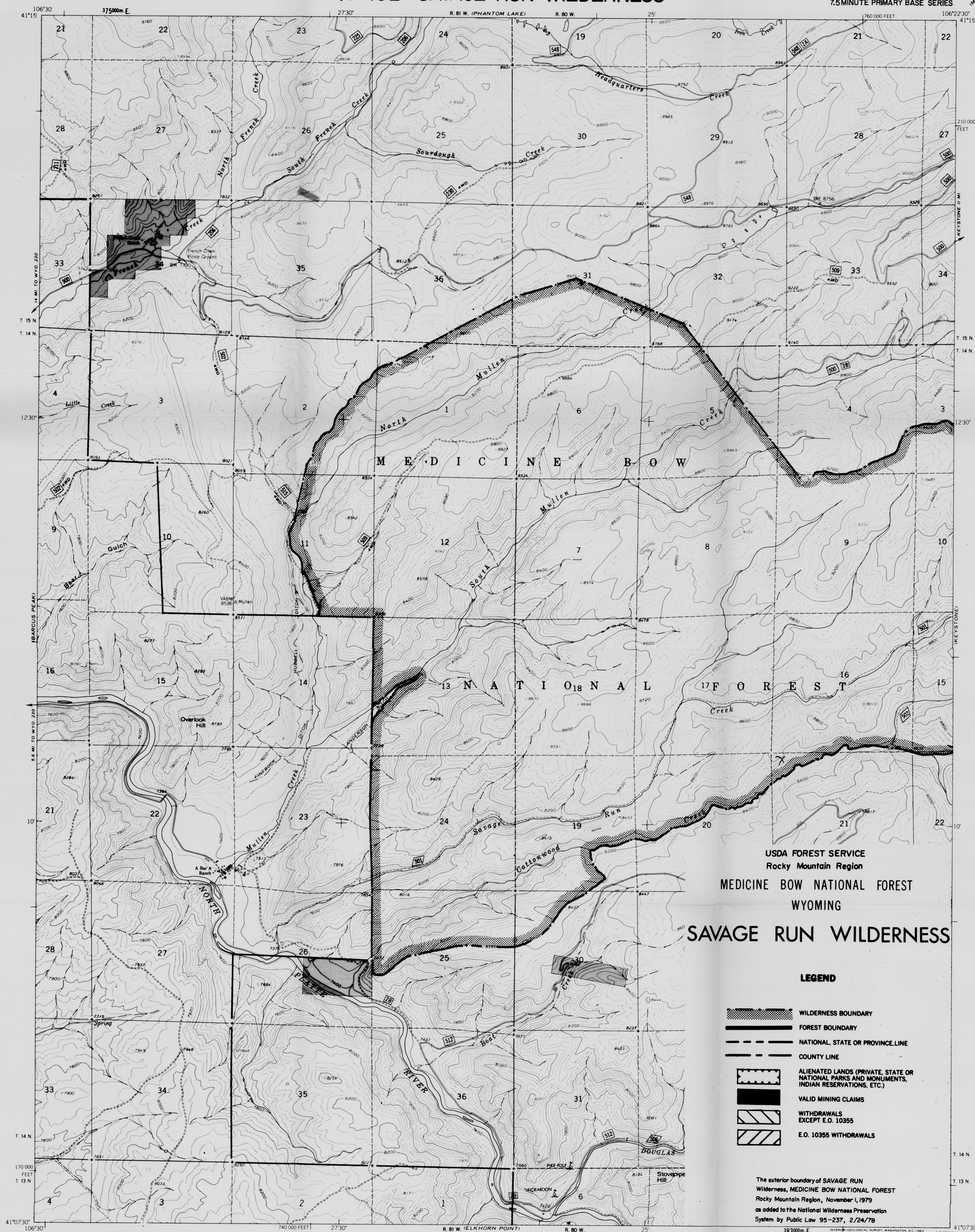
MEDICINE BOW NATIONAL FOREST

WYOMING



MEDICINE BOW NATIONAL FOREST NF 102 - SAVAGE RUN WILDERNESS

OVERLOOK HILL QUADRANGLE
WYOMING-CARBON CO.
7.5 MINUTE PRIMARY BASE SERIES



USDA FOREST SERVICE
Rocky Mountain Region
MEDICINE BOW NATIONAL FOREST
WYOMING
SAVAGE RUN WILDERNESS

LEGEND

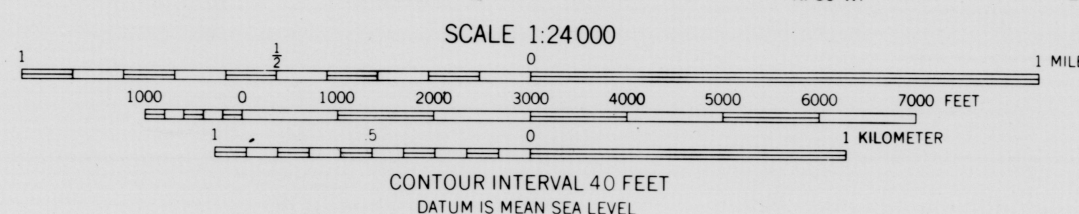
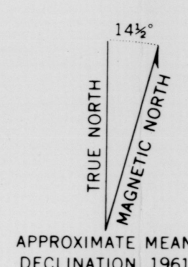
- WILDERNESS BOUNDARY
- FOREST BOUNDARY
- NATIONAL, STATE OR PROVINCE LINE
- COUNTY LINE
- ALIENATED LANDS (PRIVATE, STATE OR NATIONAL PARKS AND MONUMENTS, INDIAN RESERVATIONS, ETC.)
- VALID MINING CLAIMS
- WITHDRAWALS EXCEPT E.O. 10355
- E.O. 10355 WITHDRAWALS

The exterior boundary of SAVAGE RUN Wilderness, MEDICINE BOW NATIONAL FOREST Rocky Mountain Region, November 1, 1979 as added to the National Wilderness Preservation System by Public Law 95-237, 2/24/78

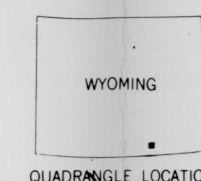
- ROAD CLASSIFICATION
- Primary highway, hard surface
 - Secondary highway, hard surface
 - Unimproved road
 - Interstate Route
 - U. S. Route
 - State Route
 - Trail

OVERLOOK HILL, WYO.
N4107 5 - W10622 5/7 5
(1961)
1973

Mapped, edited, and published by the Geological Survey as part of the Department of the Interior program for the development of the Missouri River Basin
Control by USGS and USC&GS
Topography by photogrammetric methods from aerial photographs taken 1958. Field checked 1961

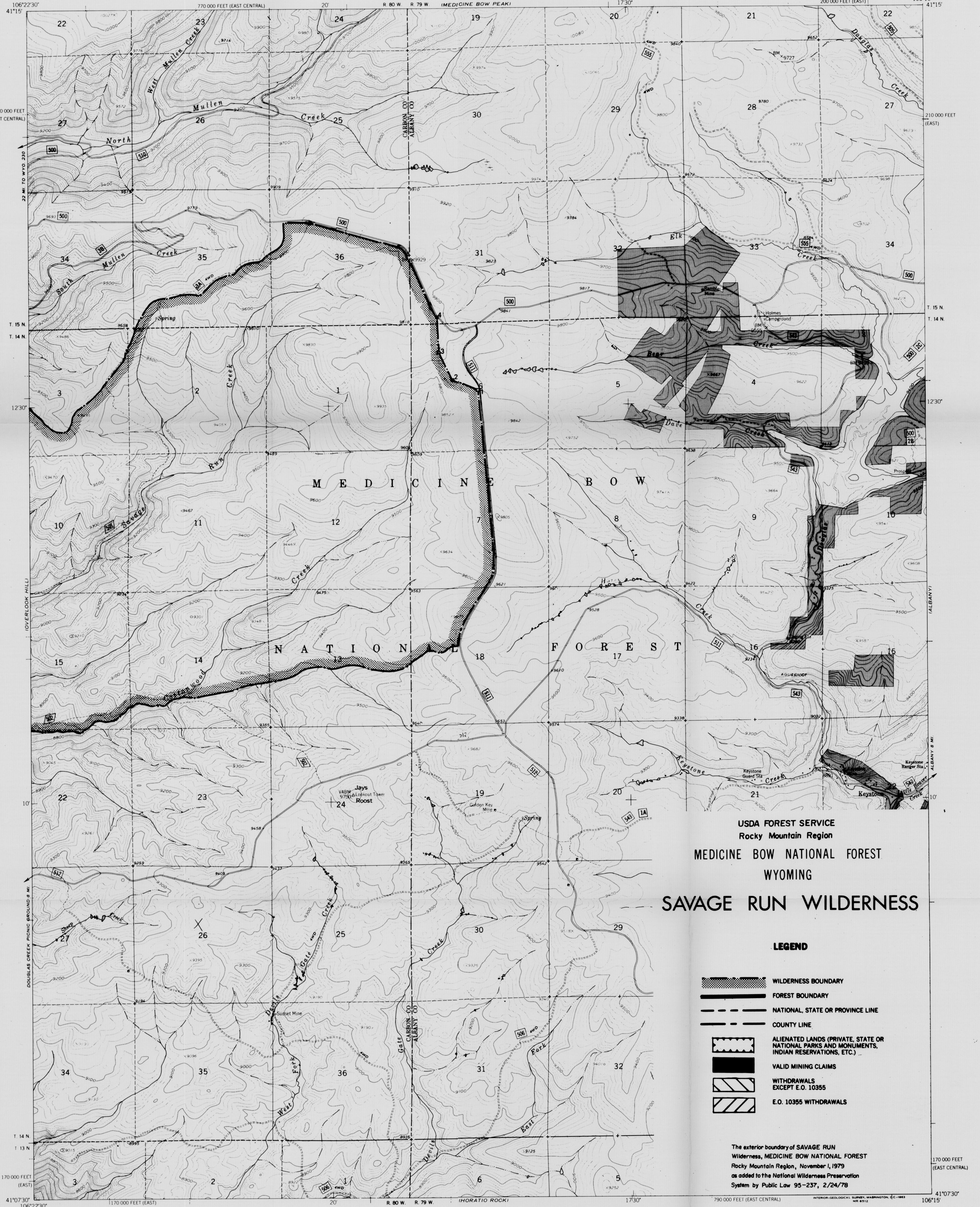


- TOWNSHIP AND SECTION LINE CLASSIFICATION
- Surveyed, location reliable
 - Surveyed, location approximate
 - Unsurveyed (Bureau of Land Management protraction)



MEDICINE BOW NATIONAL FOREST NF 102 - SAVAGE RUN WILDERNESS

KEYSTONE QUADRANGLE
WYOMING
7.5 MINUTE PRIMARY BASE SERIES



Mapped, edited, and published by the Geological Survey as part of the Department of the Interior program for the development of the Missouri River Basin. Control by USGS and USC&GS. Topography by photogrammetric methods from aerial photographs taken 1958. Field checked 1961.

TRUE NORTH
MAGNETIC NORTH
APPROXIMATE MEAN DECLINATION, 1961