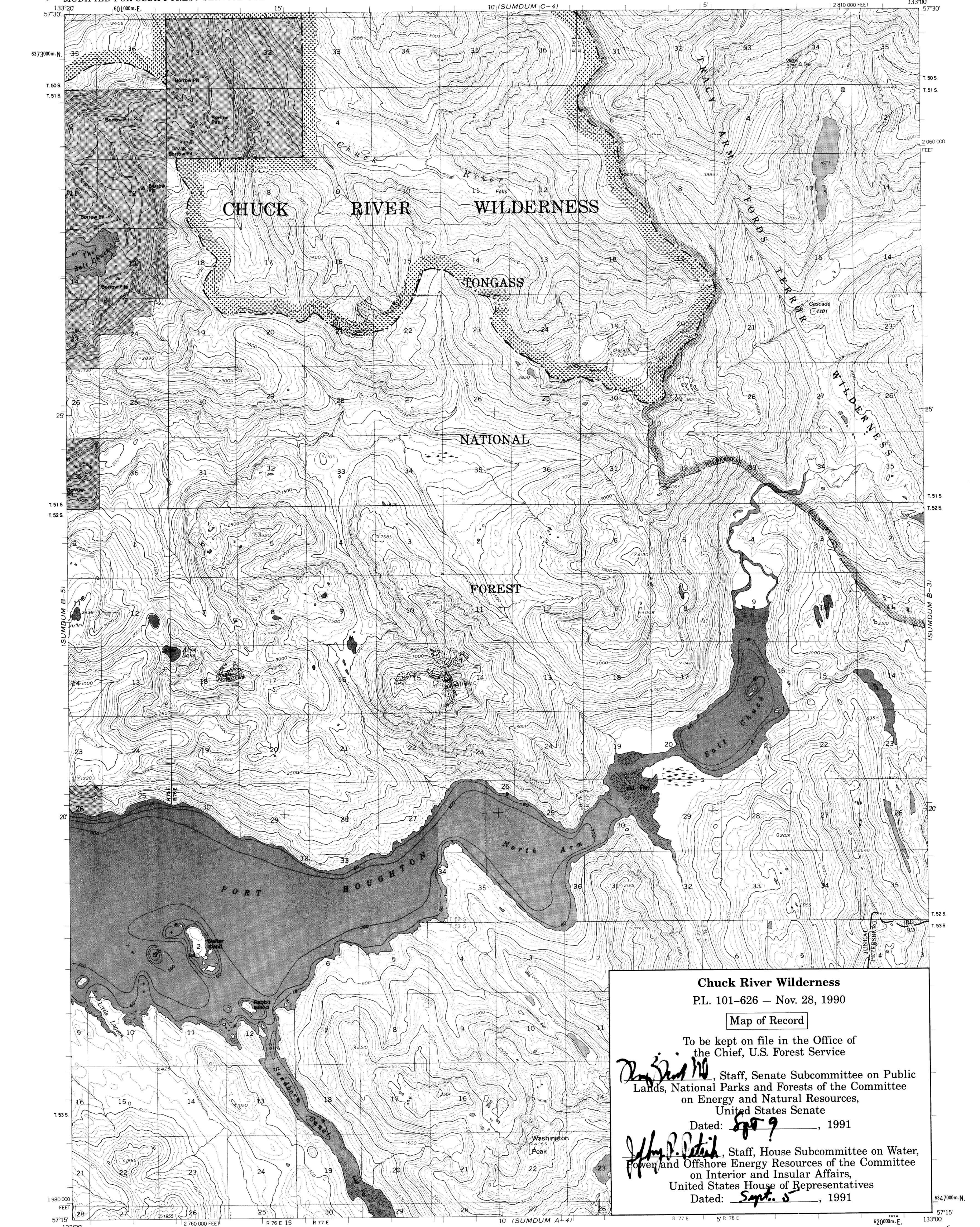


CHUCK RIVER WILDERNESS



Base map prepared by the U.S. Geological Survey
Control by USGS and NOS/NOAA
Topography by photogrammetric methods from aerial photographs taken 1948. Map not field checked
Selected hydrographic data compiled from USC&GS survey H-1966 (1889) and chart 8201 (1:217,828 scale, 1954)
This information is not intended for navigational purposes
Universal Transverse Mercator projection. 1927 North American Datum 10,000-foot grid based on Alaska coordinate system, zone 1 1000-meter Universal Transverse Mercator grid ticks, zone 8
Land lines represent surveyed locations, unsurveyed and unmarked locations predetermined by the State of Alaska, Division of Lands, Copper River Meridian
Entire land area is within the Tongass National Forest
To place on the predicted North American Datum 1983 move the projection lines 38 meters north and 103 meters east
Screened pattern shown on glacial features indicates glacial recessive visible as of the date of photography

SCALE 1:63 360
3000 0 3000 6000 9000 12000 15000 18000 21000 FEET
0 1 2 3 4 5 KILOMETERS

CONTOUR INTERVAL 100 FEET
DATUM IS MEAN SEA LEVEL
DEPTH CURVES IN FEET DATUM IS MEAN LOWER LOW WATER
SHORELINE SHOWN REPRESENTS THE APPROXIMATE LINE OF MEAN HIGH WATER
THE AVERAGE RANGE OF TIDE IS APPROXIMATELY 13 FEET

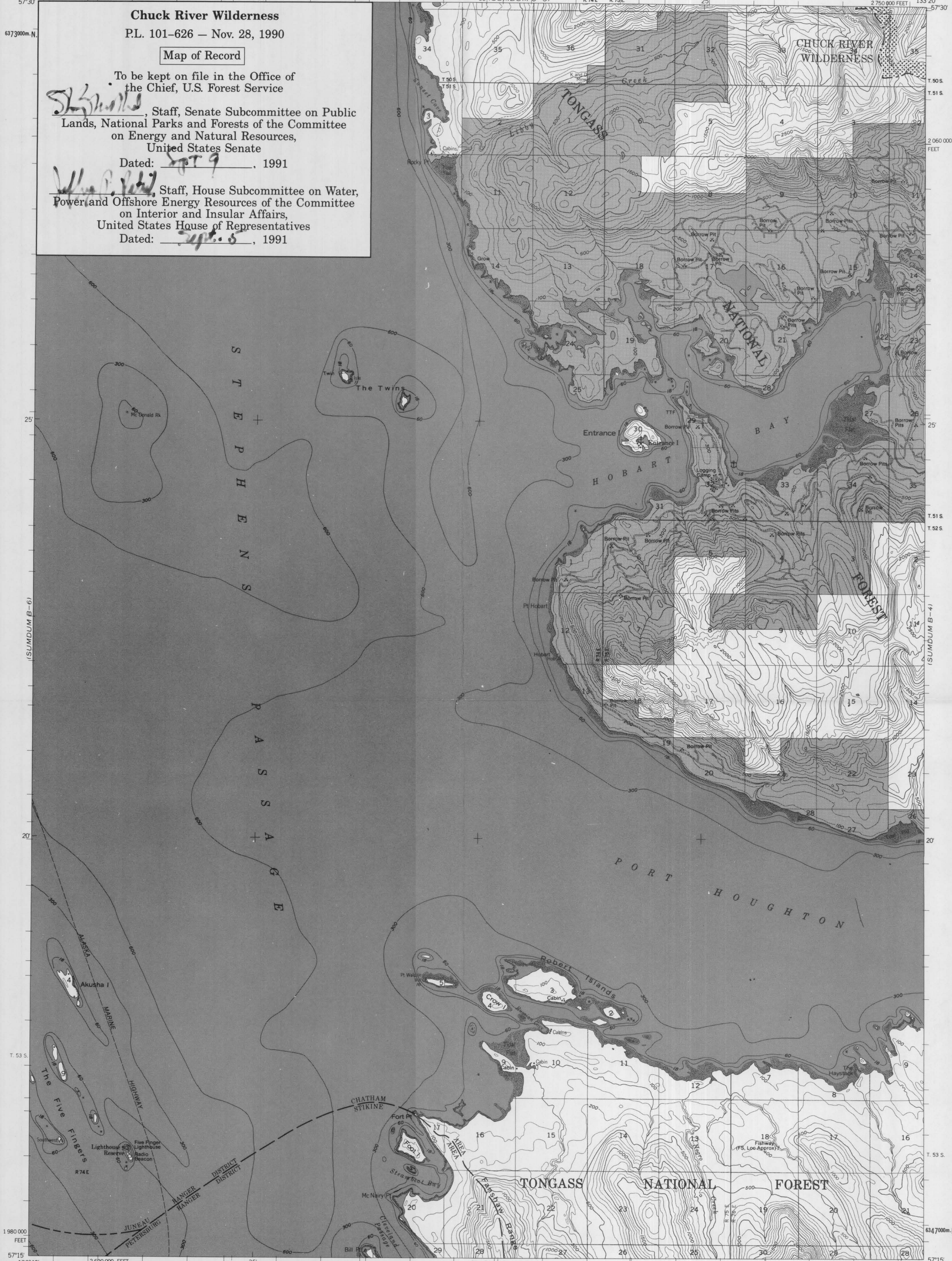
LEGEND
Wilderness Boundary
National Forest Boundary
Alienated Land within

Chuck River Wilderness
P.L. 101-626 — Nov. 28, 1990
Map of Record
To be kept on file in the Office of the Chief, U.S. Forest Service
Don S. Smith, Staff, Senate Subcommittee on Public Lands, National Parks and Forests of the Committee on Energy and Natural Resources, United States Senate
Dated: Sept. 9, 1991
Jeffrey P. Patrick, Staff, House Subcommittee on Water, Power and Offshore Energy Resources of the Committee on Interior and Insular Affairs, United States House of Representatives
Dated: Sept. 5, 1991

SUMDUM (B-4), ALASKA
N5715—W13300/15X20
The exterior boundary of Chuck River Wilderness, Tongass National Forest, Alaska Region, April 30, 1991 as entered into the National Wilderness Preservation System by P.L. 101-626, November 28, 1990.

CHUCK RIVER WILDERNESS—PROPOSED OCTOBER 1990

SUMDUM (B-5) QUADRANGLE
ALASKA
15-MINUTE SERIES (TOPOGRAPHIC)



Chuck River Wilderness P.L. 101-626 — Nov. 28, 1990

Map of Record

To be kept on file in the Office of
the Chief, U.S. Forest Service

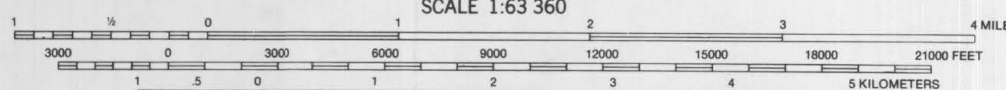
*Staff, Senate Subcommittee on Public
Lands, National Parks and Forests of the Committee
on Energy and Natural Resources,
United States Senate*

Dated: *Sept 9*, 1991

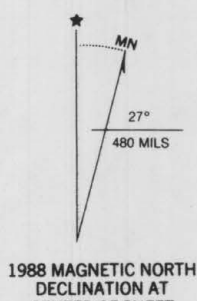
*Staff, House Subcommittee on Water,
Power and Offshore Energy Resources of the Committee
on Interior and Insular Affairs,
United States House of Representatives*

Dated: *Sept 5*, 1991

Base map prepared by the U.S. Geological Survey
Control by USGS and NOS/NOAA
Topography by photogrammetric methods from aerial photographs
taken 1948, field annotated 1951. Map not field checked
Selected hydrographic data compiled from USCGS Charts 8201
(1:217,828 scale), 8216 and 8218. This information
is not intended for navigational purposes
Universal Transverse Mercator projection, 1927 North American Datum
10,000-foot grid based on Alaska coordinate system, zone 1
1000-meter Universal Transverse Mercator grid ticks, zone 8
Land lines represent surveyed locations, unsurveyed and unmarked
locations predetermined by the State of Alaska, Division of Lands,
Copper River Meridian
Entire land area is within the Tongass National Forest
To place on the predicted North American Datum 1983 move
the projection lines 38 meters north and 104 meters east
Modification to USGS base map by the Geomatics Service
Center from 1962-1987 aerial photography and 1988 correction
guides furnished by the Alaska Region
Landnet revised according to additional Forest Service evidence



CONTOUR INTERVAL 100 FEET
DATUM IS MEAN SEA LEVEL
DEPTH CURVES IN FEET DATUM IS MEAN LOWER LOW WATER
SHORELINE SHOWN REPRESENTS THE APPROXIMATE LINE OF MEAN HIGH WATER
THE AVERAGE RANGE OF TIDE IS APPROXIMATELY 13 FEET



- LEGEND**
- Wilderness Boundary
 - National Forest Boundary
 - Alienated Land within National Forest Boundary

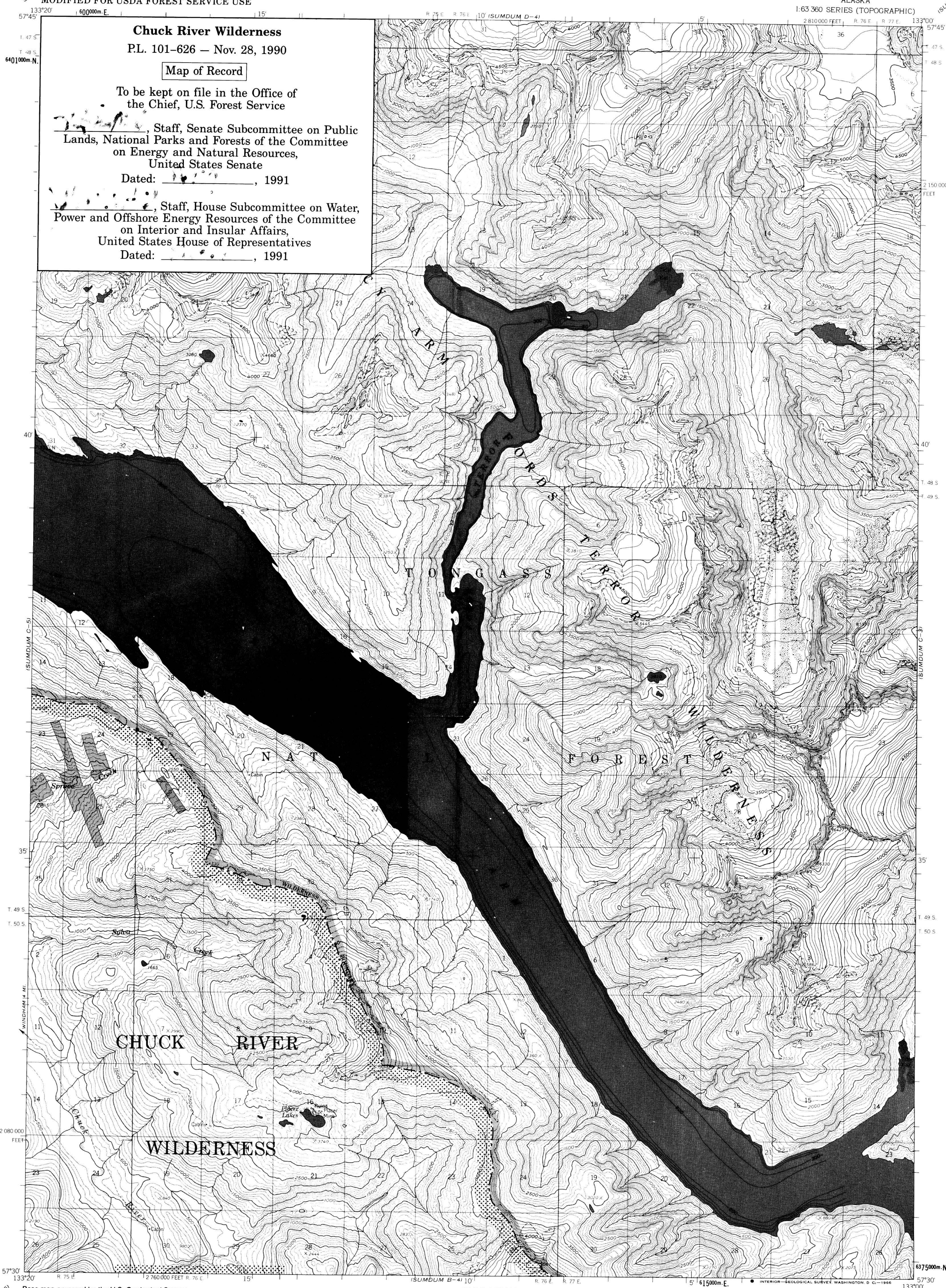
The Wilderness includes only the
public lands, islands, islets, rocks,
and pinnacles above mean high tide
within the exterior boundary.

SUMDUM (B-5), ALASKA
N5715—W13320/15X20

The exterior boundary of Chuck
River Wilderness, Tongass National
Forest, Alaska Region, April 30,
1991 as entered into the National
Wilderness Preservation System by
P.L. 101-626, November 28, 1990.

CHUCK RIVER WILDERNESS—PROPOSED OCTOBER 1990

SUMDUM (C-4) QUADRANGLE
ALASKA
1:63 360 SERIES (TOPOGRAPHIC)



CHUCK RIVER WILDERNESS—PROPOSED OCTOBER 1990

SUMDUM (C-5) QUADRANGLE
ALASKA
1:63 360 SERIES (TOPOGRAPHIC)



Chuck River Wilderness P.L. 101-626 — Nov. 28, 1990

Map of Record

To be kept on file in the Office of
the Chief, U.S. Forest Service

_____, Staff, Senate Subcommittee on Public
Lands, National Parks and Forests of the Committee
on Energy and Natural Resources,
United States Senate

Dated: _____, 1991

_____, Staff, House Subcommittee on Water,
Power and Offshore Energy Resources of the Committee
on Interior and Insular Affairs,
United States House of Representatives
Dated: _____, 1991

Base map prepared by the U.S. Geological Survey

Control by USGS and NOS/NOAA

Topography by photogrammetric methods from aerial photographs

taken 1948, field annotated 1951. Map not field checked

Selected hydrographic data compiled from USCGS Charts 8201

(1:217,828) and 8218, and from surveys H-1996, H-1999, and H-2001

This information is not intended for navigational purposes

Universal Transverse Mercator projection, 1927 North American datum

10,000 foot grid based on Alaska coordinate system, zone 1

1000-meter Universal Transverse Mercator grid ticks,

zone 8, shown in blue

Land lines represent unsurveyed and unmarked locations

predetermined by the State of Alaska, Division of Lands

Copper River Meridian

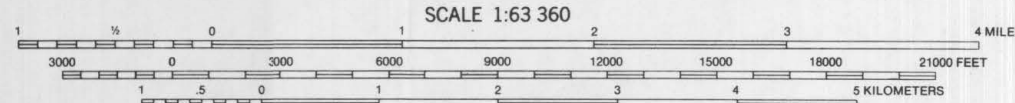
Entire land area is within the Tongass National Forest

Wilderness includes only public lands above mean high tide

Modification to USGS base map by the Geometrics Service

Center from 1962, 1974-79 aerial photography and 1981

correction guides furnished by the Alaska Region



SCALE 1:63 360

CONTOUR INTERVAL 100 FEET

DATUM IS MEAN SEA LEVEL

DEPTH CURVES IN FEET-DATUM IS MEAN LOWER LOW WATER

SHORELINE SHOWN REPRESENTS THE APPROXIMATE LINE OF MEAN HIGH WATER

THE AVERAGE RANGE OF TIDE IS APPROXIMATELY 13 FEET

LEGEND



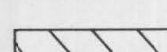
Wilderness Boundary



National Forest Boundary



Alienated Land within
National Forest Boundary



Power Withdrawals within

SUMDUM (C-5), ALASKA
N5730—W13320/15K20

The exterior boundary of Chuck
River Wilderness, Tongass National
Forest, Alaska Region, April 30,
1991 as entered into the National
Wilderness Preservation System by
P.L. 101-626, November 28, 1990.

CHUCK RIVER WILDERNESS