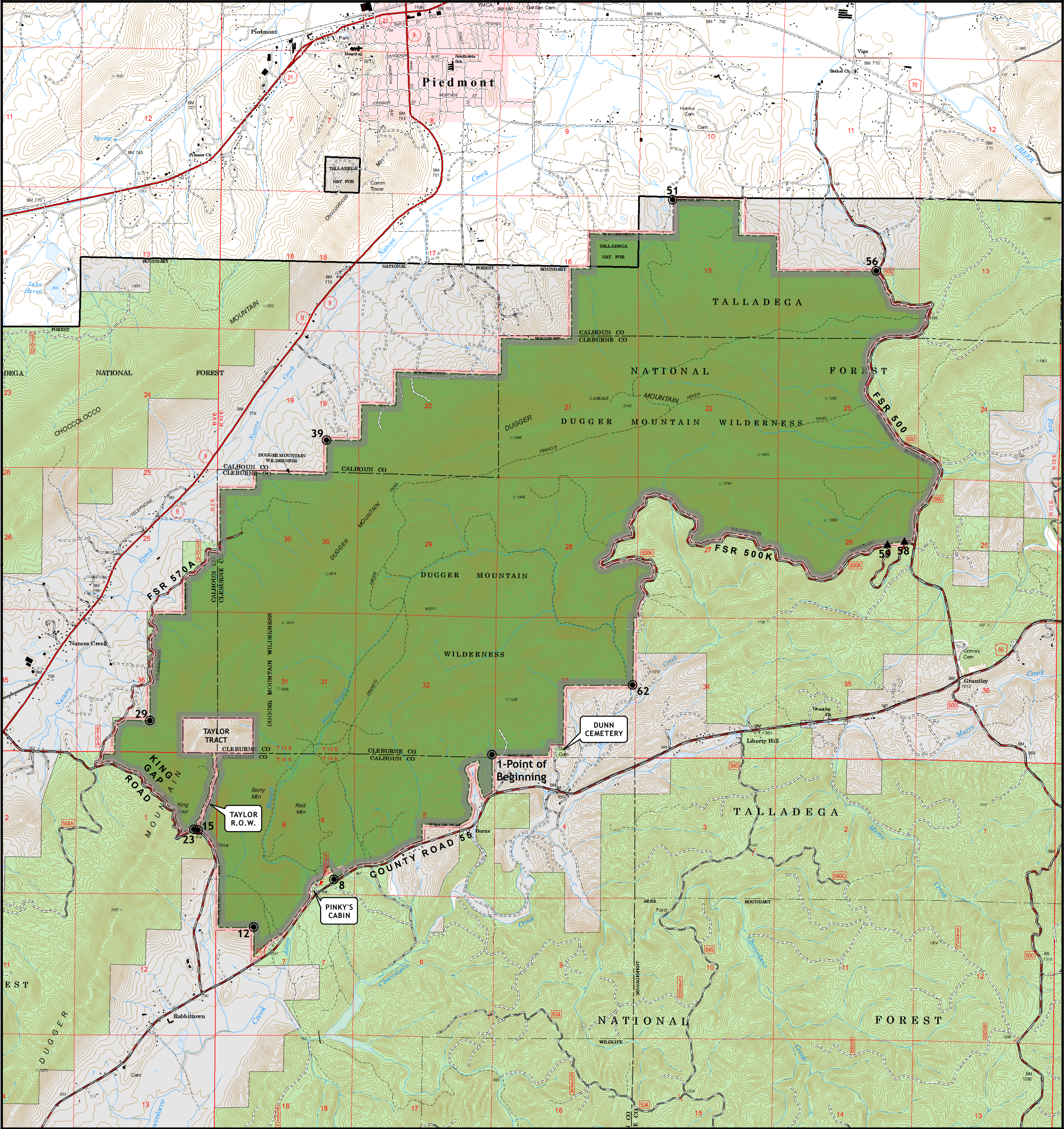




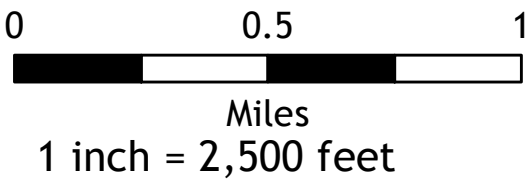
DUGGER MOUNTAIN WILDERNESS

TALLADEGA NATIONAL FOREST
SOUTHERN REGION, ALABAMA
DECEMBER 9, 1999. PUBLIC LAW 106-156

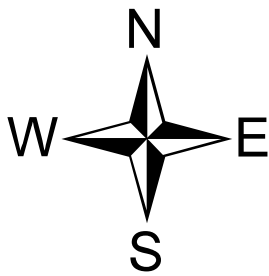


NOTES

1. See boundary description for metes and bounds, and corner information.
2. Compiled using current Forest GIS data and National Forests in Alabama Lands records.
3. USGS quadrangle maps covered: Jacksonville East, Piedmont, Piedmont NW, Piedmont SE, AL.
4. Map drawn October 20, 2017, prepared by the Regional Office, Atlanta, GA.



8,947 ACRES



Legend

- Wilderness Corner
- Forest Service Wilderness Monument Set
- Dugger Mountain Wilderness Boundary
- Dugger Mountain Wilderness
- National Forest System Land
- Non-National Forest System Land