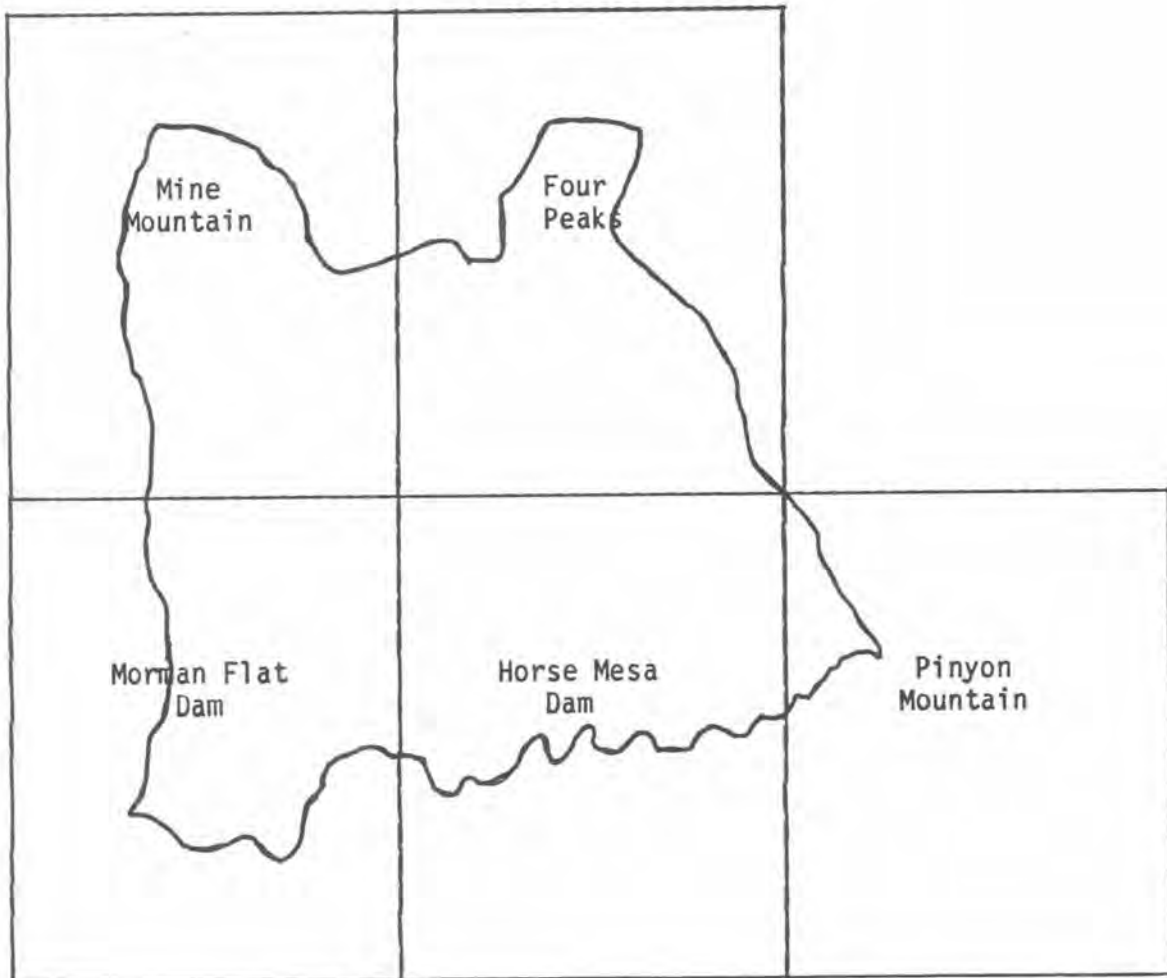
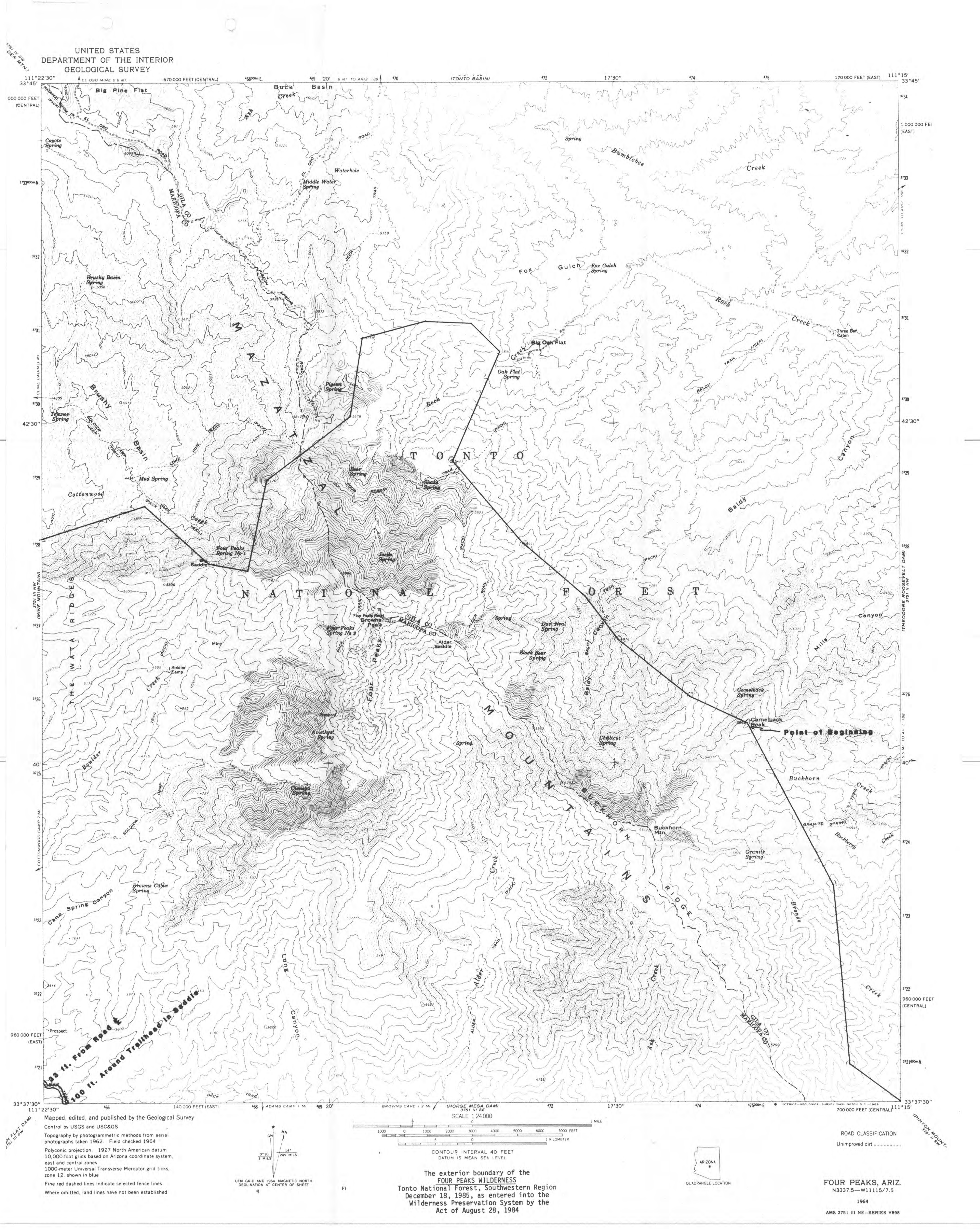


Four Peaks Wilderness

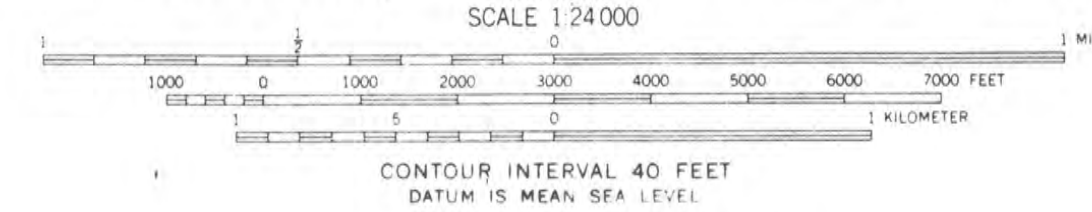
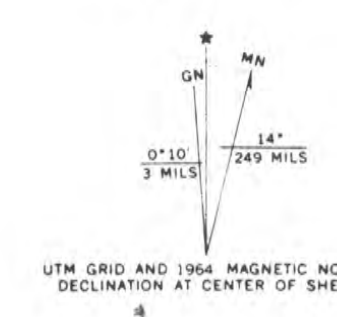




UNITED STATES
DEPARTMENT OF THE INTERIOR
GEOLOGICAL SURVEY



Mapped, edited, and published by the Geological Survey
Control by USGS and USC&GS
Topography by photogrammetric methods from aerial
photographs taken 1962. Field checked 1964
Polyconic projection. 1927 North American datum
10,000-foot grids based on Arizona coordinate system,
east and central zones
1000-meter Universal Transverse Mercator grid ticks,
zone 12, shown in blue
Fine red dashed lines indicate selected fence lines
Where omitted, land lines have not been established



The exterior boundary of the
FOUR PEAKS WILDERNESS
Tonto National Forest, Southwestern Region
December 18, 1985, as entered into the
Wilderness Preservation System by the
Act of August 28, 1984

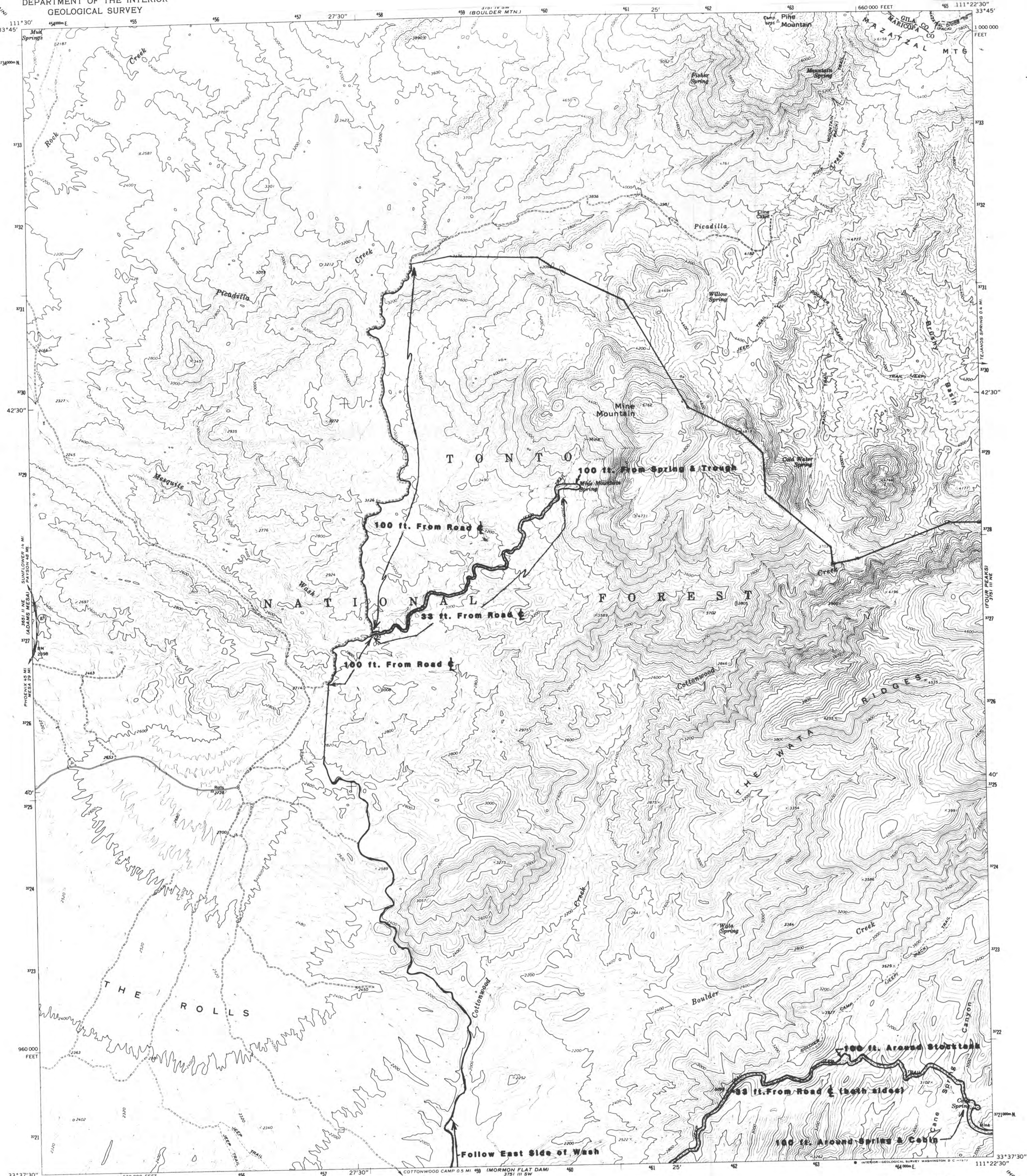


ROAD CLASSIFICATION
Unimproved dirt

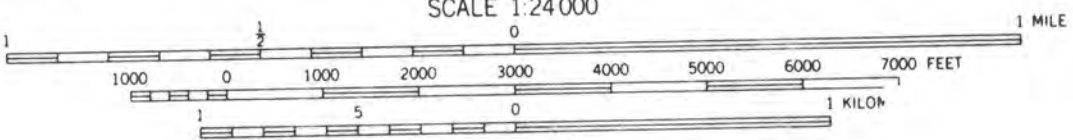
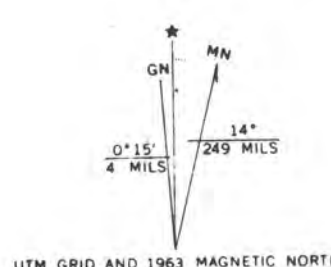
FOUR PEAKS, ARIZ.
N3337.5-W11115.7.5

1964
AMS 3751 III NE-SERIES V898

UNITED STATES
DEPARTMENT OF THE INTERIOR
GEOLOGICAL SURVEY



Maped, edited, and published by the Geological Survey
Control by USGS and USC&GS
Topography by photogrammetric methods from aerial
photographs taken 1962. Field checked 1963
Polyconic projection. 1927 North American datum
10,000-foot grid based on Arizona coordinate system, central zone
1000-meter Universal Transverse Mercator grid ticks,
zone 12, shown in blue
Where omitted, land lines have not been established
or are not shown because of insufficient data



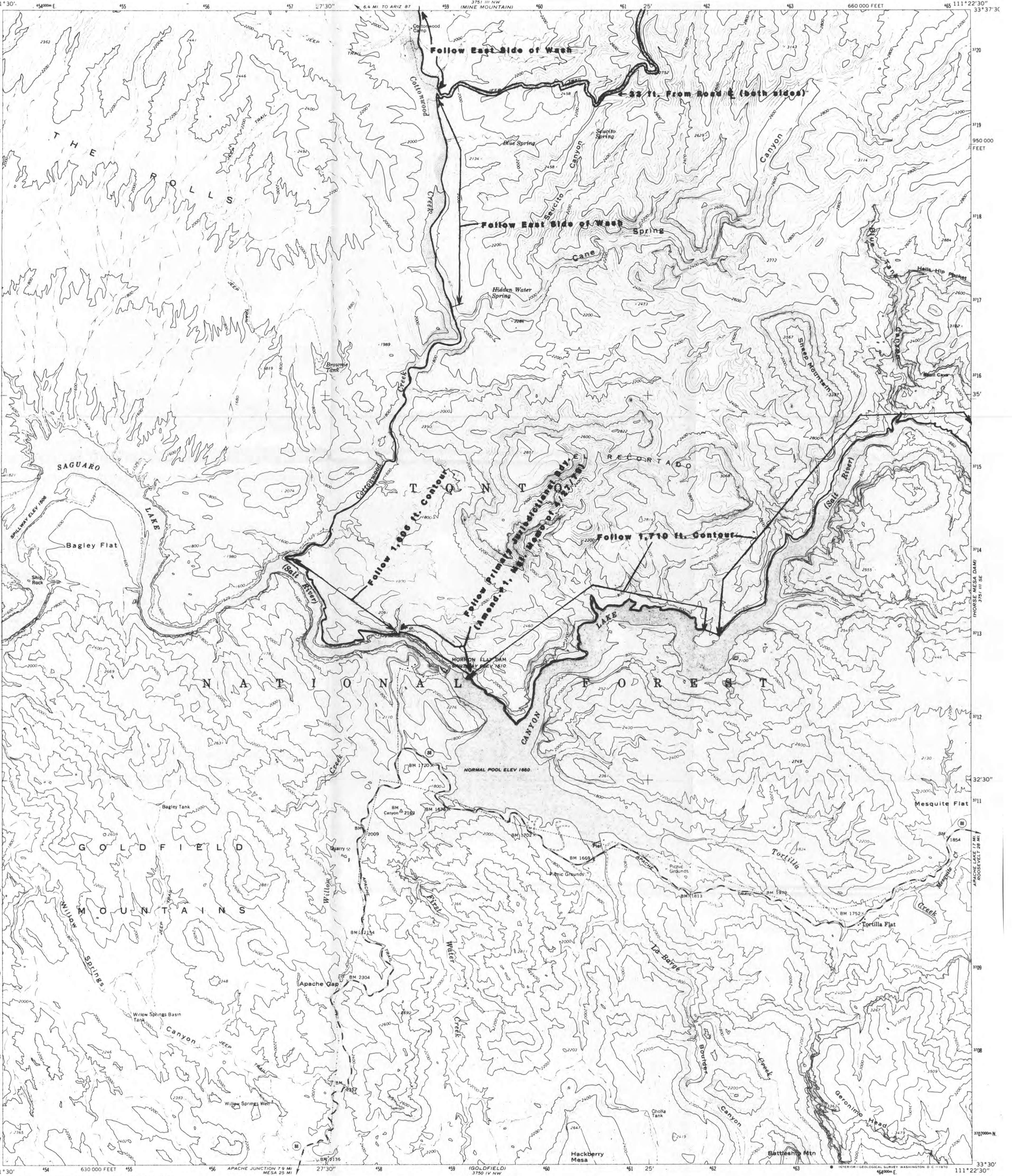
CONTOUR INTERVAL 40 FEET
The exterior boundary of the
FOUR PEAKS WILDERNESS
Tonto National Forest, Southwestern Region
December 18, 1985, as entered into the
Wilderness Preservation System by the
Act of August 28, 1984



ROAD CLASSIFICATION
Medium-duty ——— Light-duty ———
Unimproved dirt ———
○ State Route

MINE MOUNTAIN, ARIZ.
N337.5—W112.5/7.5
1963
AMS 3751 III NW—SERIES V898

UNITED STATES
DEPARTMENT OF THE INTERIOR
GEOLOGICAL SURVEY



Mapped, edited, and published by the Geological Survey
Control by USGS and USC&GS
Topography by photogrammetric methods from aerial
photographs taken 1962. Field checked 1964
Polyconic projection. 1927 North American datum.
10,000-foot grid based on Arizona coordinate system, central zone
1000-meter Universal Transverse Mercator grid ticks,
zone 12, shown in blue
Where omitted, land lines have not been established
Areas covered by dashed light blue pattern are subject
to controlled inundation

UTM GRID AND 1964 MAGNETIC NORTH
DECLINATION AT CENTER OF SHEET

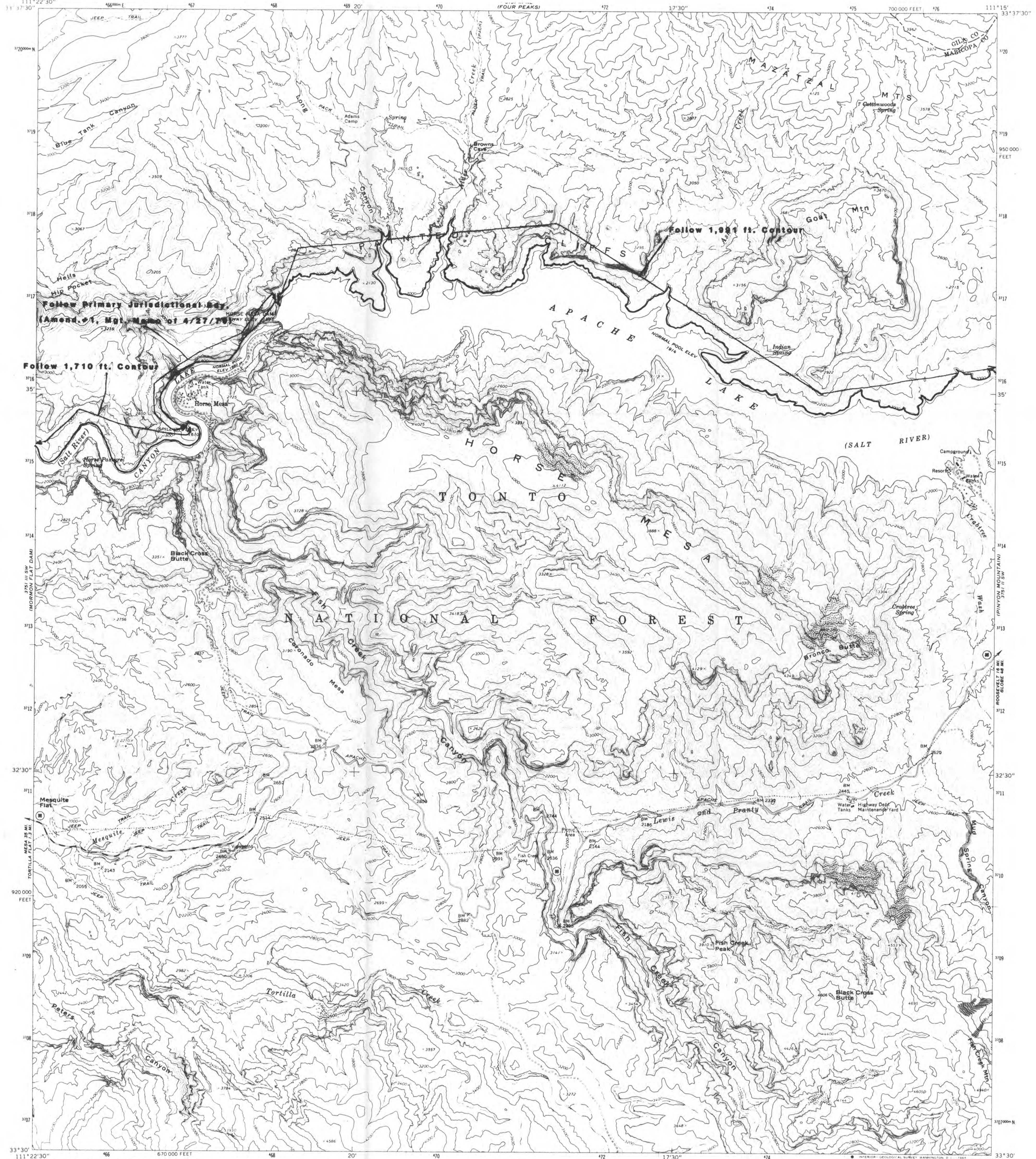
SCALE 1:24,000
CONTOUR INTERVAL 40 FEET
DATUM IS MEAN SEA LEVEL

ARIZONA
QUADRANGLE LOCATION

ROAD CLASSIFICATION
Medium-duty ——— Light-duty ———
Unimproved dirt - - - - -
State Route ○
MORMON FLAT DAM, ARIZ.
N3330-W11122.5/7.5
1964
AMS 3751 III SW-SERIES V898

The exterior boundary of the
FOUR PEAKS WILDERNESS
Tonto National Forest, Southwestern Region
December 18, 1985, as entered into the
Wilderness Preservation System by the
Act of August 28, 1984

UNITED STATES
DEPARTMENT OF THE INTERIOR
GEOLOGICAL SURVEY



Mapped, edited, and published by the Geological Survey
Control by USGS and USC&GS
Topography by photogrammetric methods from aerial
photographs taken 1962. Field checked 1964
Polyconic projection. 1927 North American datum
10,000-foot grid based on Arizona coordinate system, central zone
1000-meter Universal Transverse Mercator grid ticks,
zone 12, shown in blue
Where omitted, land lines have not been established

UTM GRID AND 1964 MAGNETIC NORTH
DECLINATION AT CENTER OF SHEET

SCALE 1:24,000
1000 0 1000 2000 3000 4000 5000 6000 7000 FEET
0 1 2 3 4 5 6 7 8 9 10 KILOMETER
CONTOUR INTERVAL 40 FEET
DATUM IS MEAN SEA LEVEL

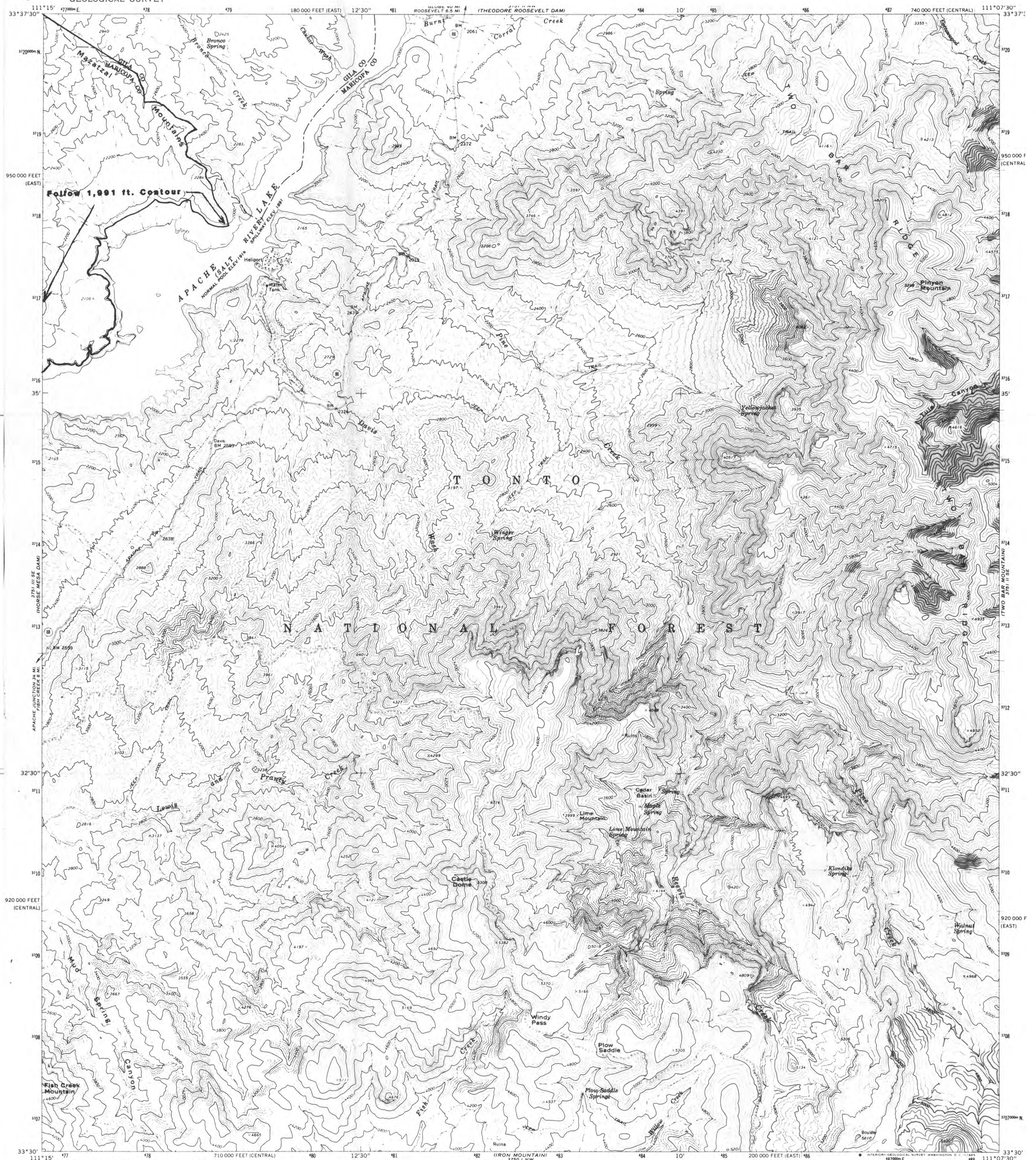
ROAD CLASSIFICATION
Medium-duty
Un.

ARIZONA
QUADRANGLE LOCATION

HORSE MESA DAM, ARIZ.
N3330-W11115/7.5
1964
AMS 3751 III SE-SERIES V898

The exterior boundary of the
FOUR PEAKS WILDERNESS
Tonto National Forest, Southwestern Region
December 18, 1985, as entered into the
Wilderness Preservation System by the
Act of August 28, 1984

UNITED STATES
DEPARTMENT OF THE INTERIOR
GEOLOGICAL SURVEY



Mapped, edited, and published by the Geological Survey

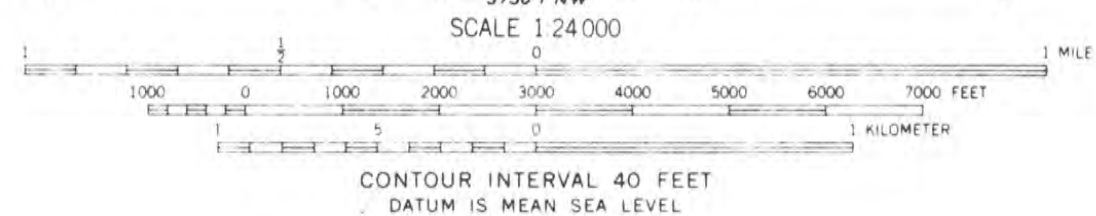
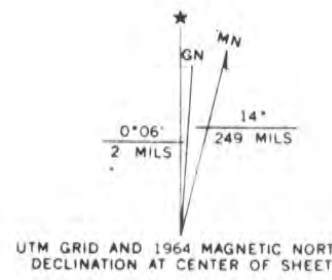
Control by USGS and USC&GS

Topography by photogrammetric methods from aerial
photographs taken 1962. Field checked 1964

Polycyclic projection. 1927 North American datum
10,000-foot grids based on Arizona coordinate system;
central and east zones

1000-meter Universal Transverse Mercator grid ticks;
zone 12, shown in blue

Where omitted, land lines have not been established



ROAD CLASSIFICATION

Light duty

The exterior boundary of the
FOUR PEAKS WILDERNESS
Tonto National Forest, Southwestern Region
December 18, 1985, as entered into the
Wilderness Preservation System by the
Act of August 28, 1984

PINYON MOUNTAIN, ARIZ.
N3330-W1107.5/7.5

1964

AMS 3751 II SW-SERIES V898