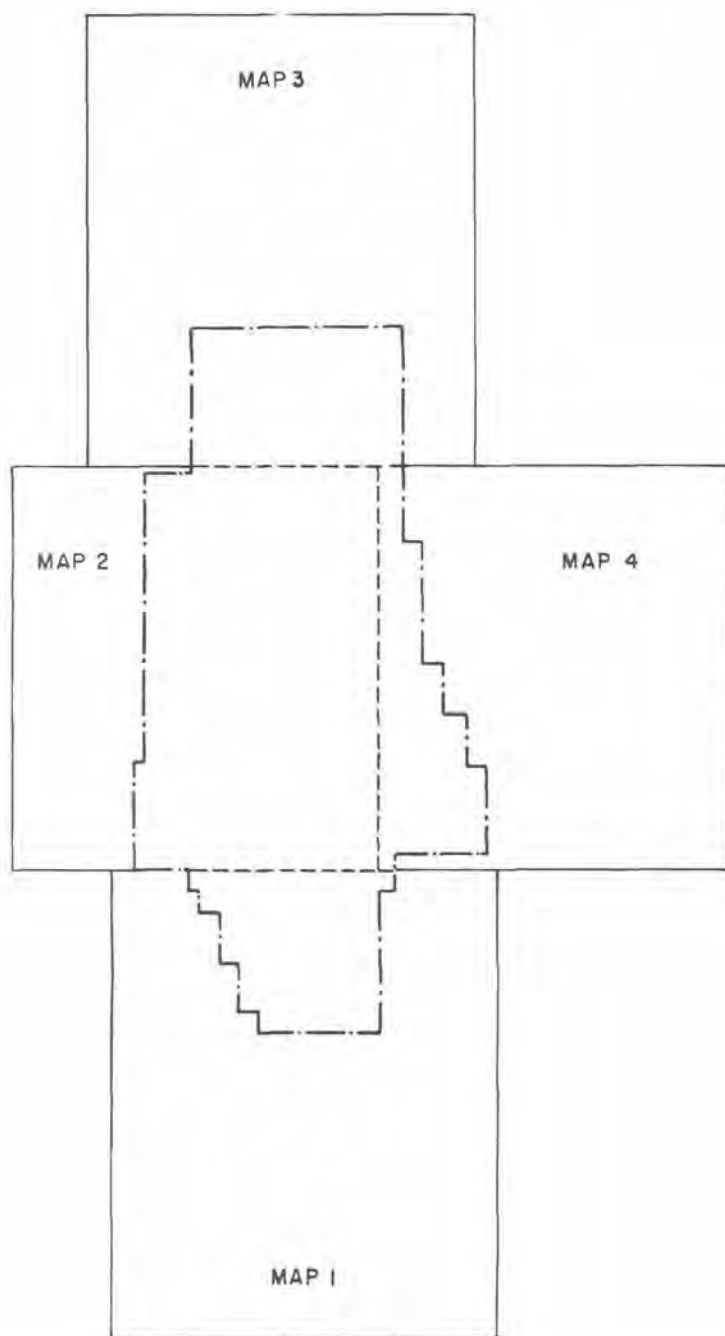


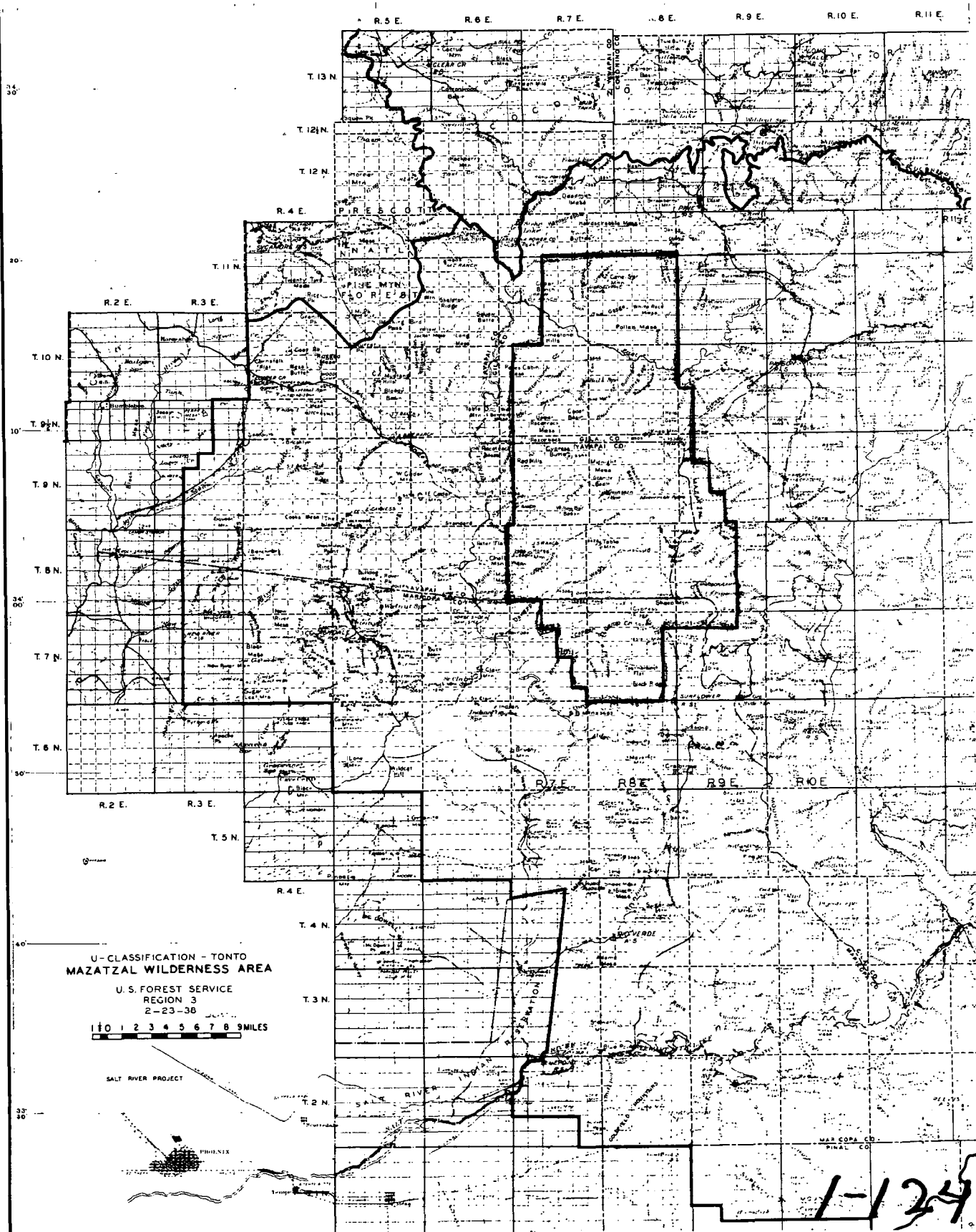
LAZATZAL WILDERNESS

COMPOSITE INDEX MAP



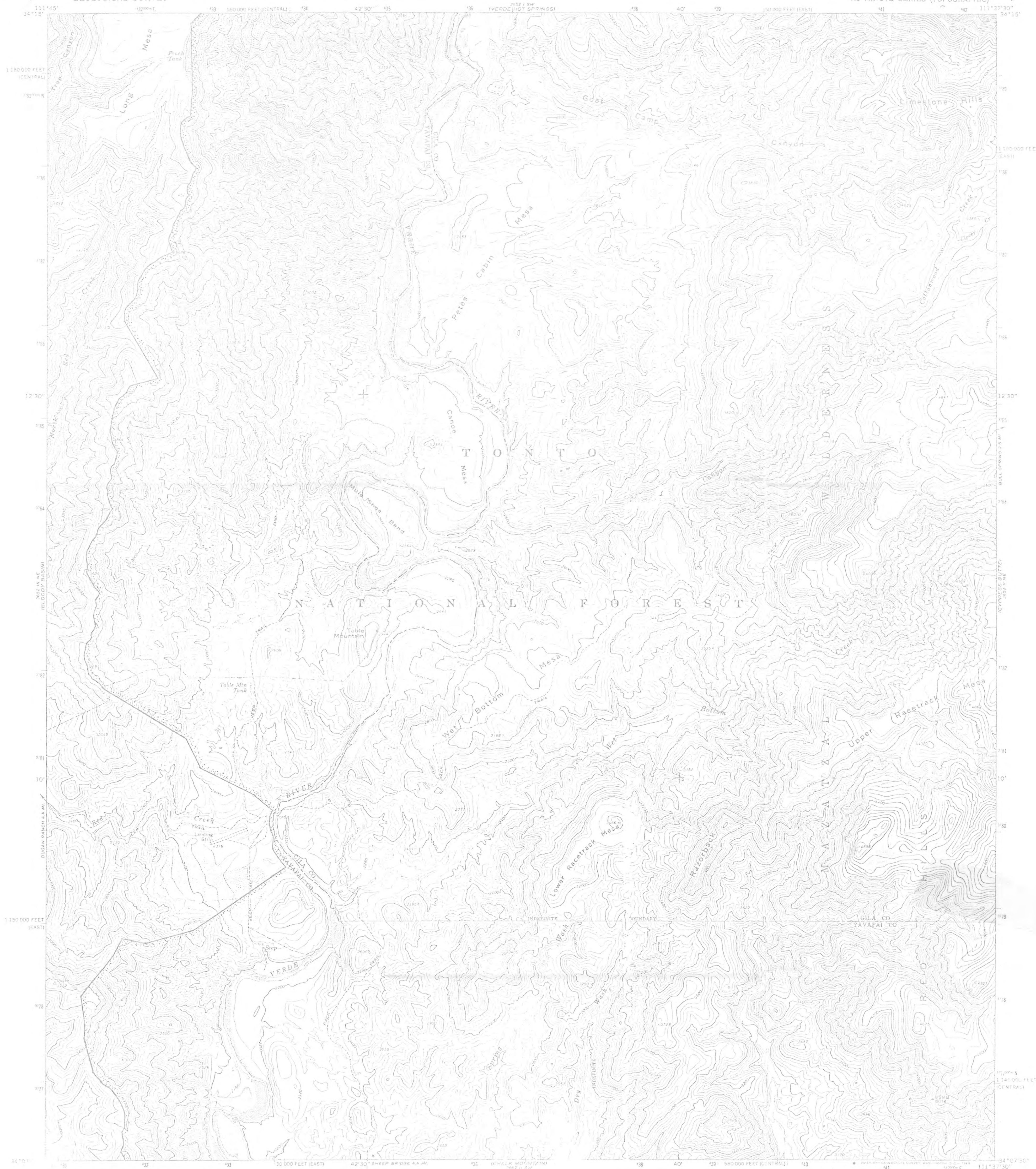
- · — · — · WILDERNESS BOUNDARY
- MAP OUTLINE
- MAP EDGE MATCH LINE

SCALE $\frac{1}{8}" = 1 \text{ MILE}$

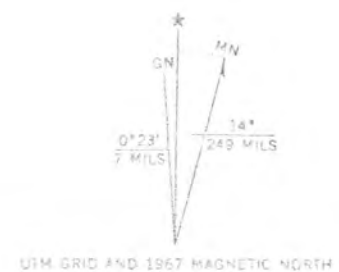


UNITED STATES
DEPARTMENT OF THE INTERIOR
GEOLOGICAL SURVEY

WET BOTTOM MESA QUADRANGLE
ARIZONA
7.5 MINUTE SERIES (TOPOGRAPHIC)



and, edited, and published by the Geological Survey
by USGS and USC&GS
by photogrammetric methods from aerial
photos taken 1965. Field checked 1967
Projection: 1927 North American datum
Grid: based on Arizona coordinate system,
zone 12N
Universal Transverse Mercator grid ticks,
shown in blue
Dashed lines indicate selected fence lines
not have not been established in this area



ROAD CLASSIFICATION
Trails

The exterior boundary of the National
Southwestern Region, January 17, 1986,
Preservation System by the Act of April

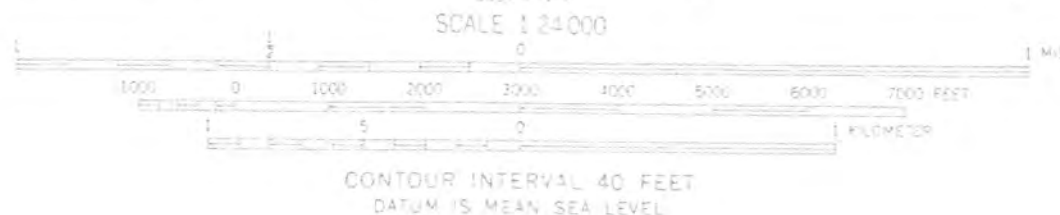
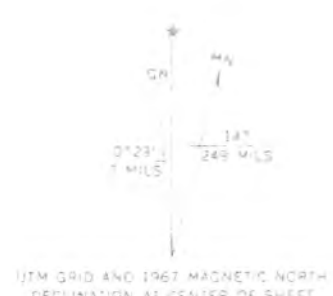
Tonto National Forest,
into the National Wilderness

WET BOTTOM MESA, ARIZ.
1434075-1111375/7.5

1967



Map compiled, edited, and published by the Geological Survey
Control by USGS and USC&GS
Topography by photogrammetric methods from aerial
photographs taken 1963. Field checks 1967
Underwater contours by the Salt River Project
Polyconic projection. 1927 North American datum.
10,000 foot grid based on Arizona coordinate system, central zone
1000-meter Universal Transverse Mercator grid ticks
zone 12, shown in blue
Fine red dashed lines indicate selected fence lines
Land lines have not been established in this area
Areas covered by dashed light blue pattern
are subject to controlled inundation



ROAD CLASSIFICATION
Light duty ————— Unimproved dirt —————

CHALK MOUNTAIN, ARIZ.
N3400-W11137.5/7.5

1967
AMS 5652 II SW-SERIES V898

The exterior boundary of the Mazatzal Wilderness, Tonto National Forest,
Southwestern Region, January 17, 1986, as entered into the National Wilderness
Preservation System by the Act of August 28, 1984.



Mapped, edited, and published by the Geological Survey

Control by USGS and USC&GS

Topography by photogrammetric methods from aerial

photographs taken 1965. Field checked 1967

Polyconic projection. 1927 North American datum

10,000-foot grids based on Arizona coordinate system,

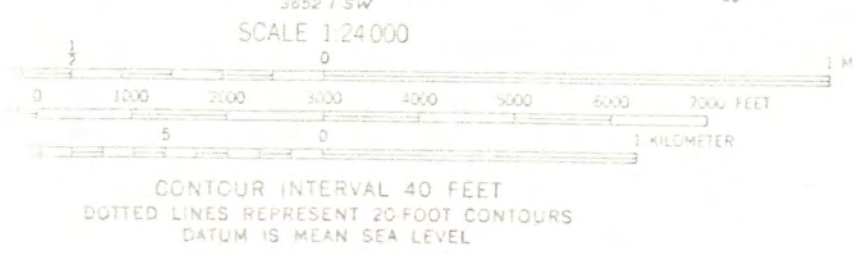
central and east zones

3000-meter Universal Transverse Mercator grid ticks,

zone 12, shown in blue

Fine red dashed lines indicate selected fence lines

Where omitted, land lines have not been established



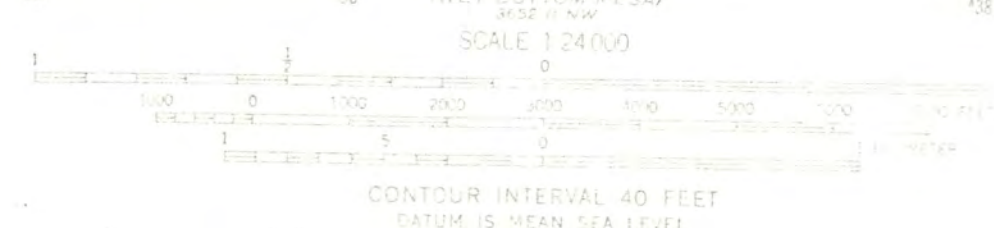
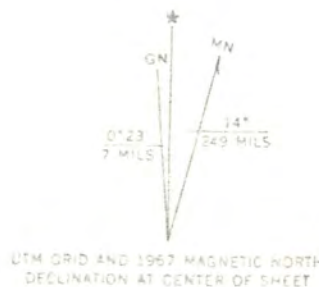
The boundary of the Mazatzal Wilderness, Tonto National Forest,
Arizona, January 17, 1986, as entered into the National Wilderness
System by the Act of August 28, 1984.



HACKBERRY MTN. QUADRANGLE
ARIZONA
7.5 MINUTE SERIES (TOPOGRAPHIC)



Mapped, edited, and published by the Geological Survey
Control by USGS and USGS
Photography by USGS and USGS
Photoreduction by USGS and USGS
Polymerized by USGS and USGS
Central and USGS and USGS
Scale 1:24,000
Date 12/15/67



ROAD CLASSIFICATION
Light duty
Unimproved dirt

The exterior boundary of the Mazatzal Wilderness, Tonto National Forest, Southwestern Region, January 17, 1966, as entered into the National Forest Preservation System by the Act of August 28, 1964.

VERDE HOT SPRINGS, ARIZ.
N3415-W11375/7.5

1967

AMS 3652 1 SW-SERIES V898

UNITED STATES
DEPARTMENT OF THE INTERIOR
GEOLOGICAL SURVEY

100 ft. from
Road

100 ft. from edge of easement

T O N T O N A T I O N A L

MESA

DEADMAN

HARD SCRABBLE MESA

HARD SCRABBLE MESA

T O N T O

N A T I O N A L

F O R E S T

M A Z A T Z A L

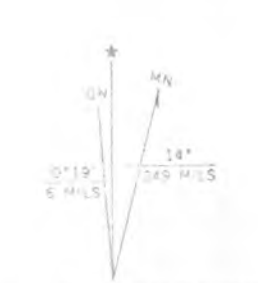
W I L D E R N E S S

T H E G O R G E

P O L L E S

M E S A

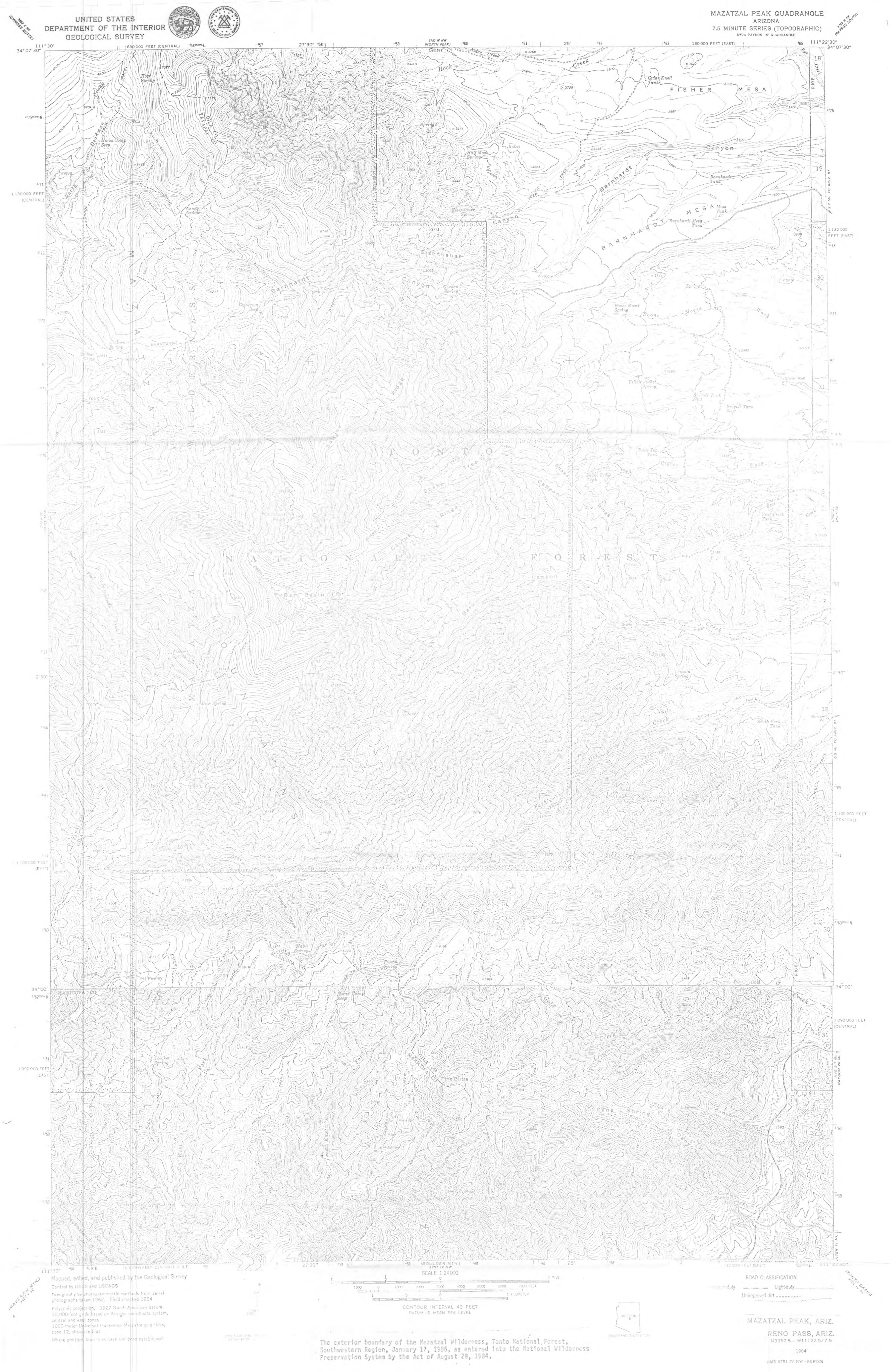
Maped, edited, and published by the Geological Survey
Control by USGS and USFWS
Topography by photogrammetric methods from aerial
photographs taken 1965. Field checked 1967.
Polyconic projection, 1927 North American spheroid,
10,000-foot grid based on Arizona coordinate system, 1911
1000 meter Universal Transverse Mercator grid, zone
12, shown in blue.
Flow lines indicate collected flood flow.
Land lines have not been established in this area.



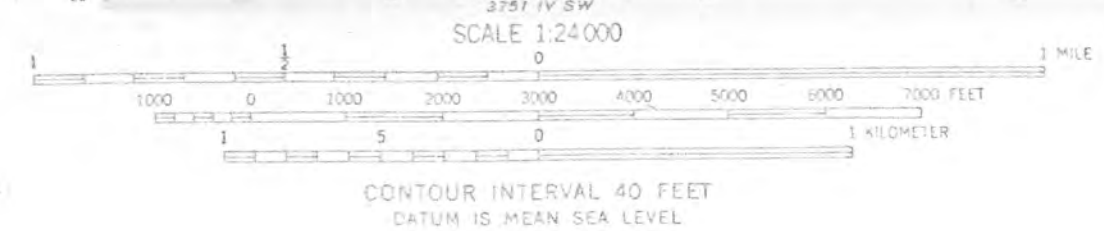
CONTOUR INTERVAL 40 FEET
DOTTED LINES REPRESENT 20-FOOT CONTOURS
DATUM IS MEAN SEA LEVEL

ROAD CLASSIFICATION
Unimproved dirt

The exterior boundary of the Mazatzal Wilderness, Tonto National Forest,
Southwestern Region, January 17, 1966, as entered into the National Wilderness
System by the Act of August 31, 1964.



Mapped, edited, and published by the Geological Survey
Control by USGS and USC&GS
Topography by photogrammetric methods from aerial
photographs taken 1962. Field checked 1964
Polyconic projection. 1927 North American datum.
10,000-foot grid based on Arizona coordinate system,
central and east zones.
1000-meter Universal Transverse Mercator grid ticks,
zone 12, shown in blue
Where omitted, land lines have not been established

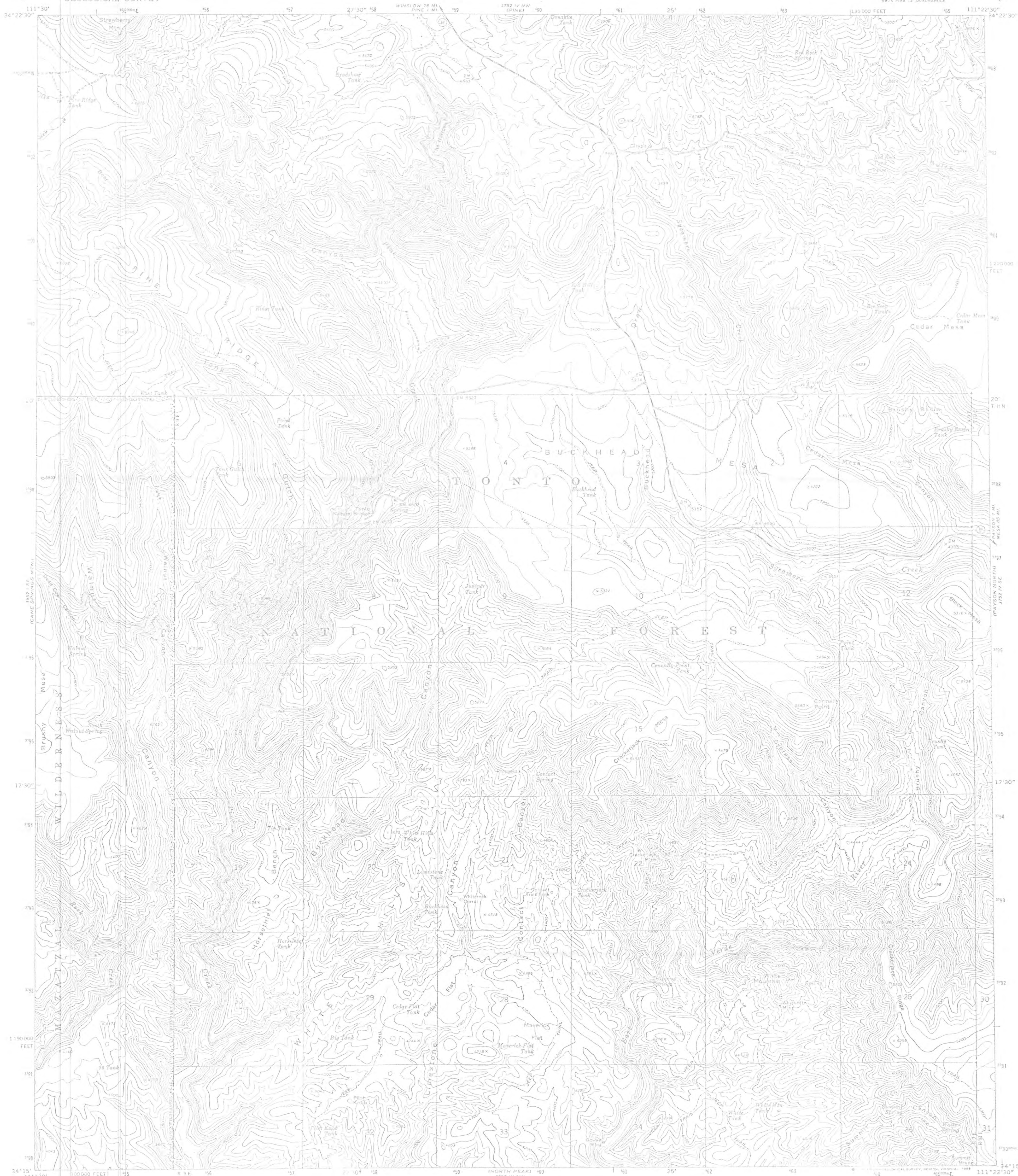


ROAD CLASSIFICATION
Unimproved dirt
Light-duty
Unimproved dirt



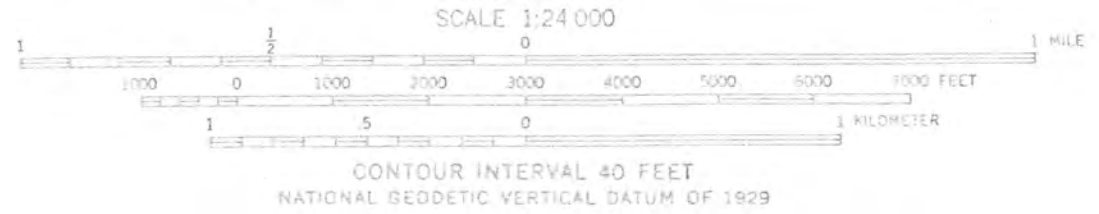
MAZATZAL PEAK, ARIZ.
RENO PASS, ARIZ.
N3352.5-W11122.5/7.5
1964
AMS 3751 IV NW-SERIES

The exterior boundary of the Mazatzal Wilderness, Tonto National Forest,
Southwestern Region, January 17, 1986, as entered into the National Wilderness
Preservation System by the Act of August 28, 1984.



Map by the U. S. Forest Service
Edited and published by the Geological Survey
Control by USGS, NOS/NOAA, and USFS

Topography by photogrammetric methods from aerial
photographs taken 1965. Field checked by USGS 1973
Projection and 10,000-foot grid ticks: Arizona coordinate
system, east zone (Transverse Mercator)
1000-meter Universal Transverse Mercator grid ticks,
zone 12, shown in blue, 1927 North American datum
To place on the preflight North American Datum 1983
move the projection lines 1 meter south and
64 meters east as shown by dashed corner ticks
Fine red dashed lines indicate selected fence lines
Where omitted, land lines have not been established
There may be private inholdings within the boundary of
the National or State reservation shown on this map



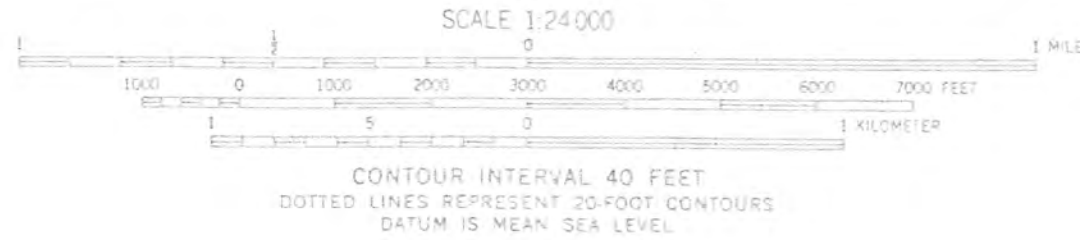
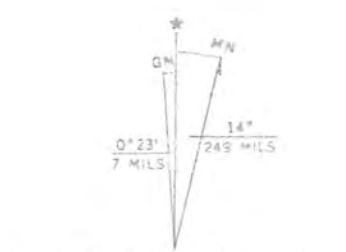
ROAD CLASSIFICATION
Light-duty road, hard or
improved surface
Unimproved road
U.S. Route
State Route

BUCKHEAD MESA, ARIZ.
SW 4 PINE 15' QUADRANGLE
34111-C4-TF-024
1973
GSA 3752 IV SW-SERIES V488

Interior boundary of the Mazatzal Wilderness, Tonto National Forest,
Western Region, January 17, 1986, as entered into the National Wilderness
Observation System by the Act of August 28, 1984.



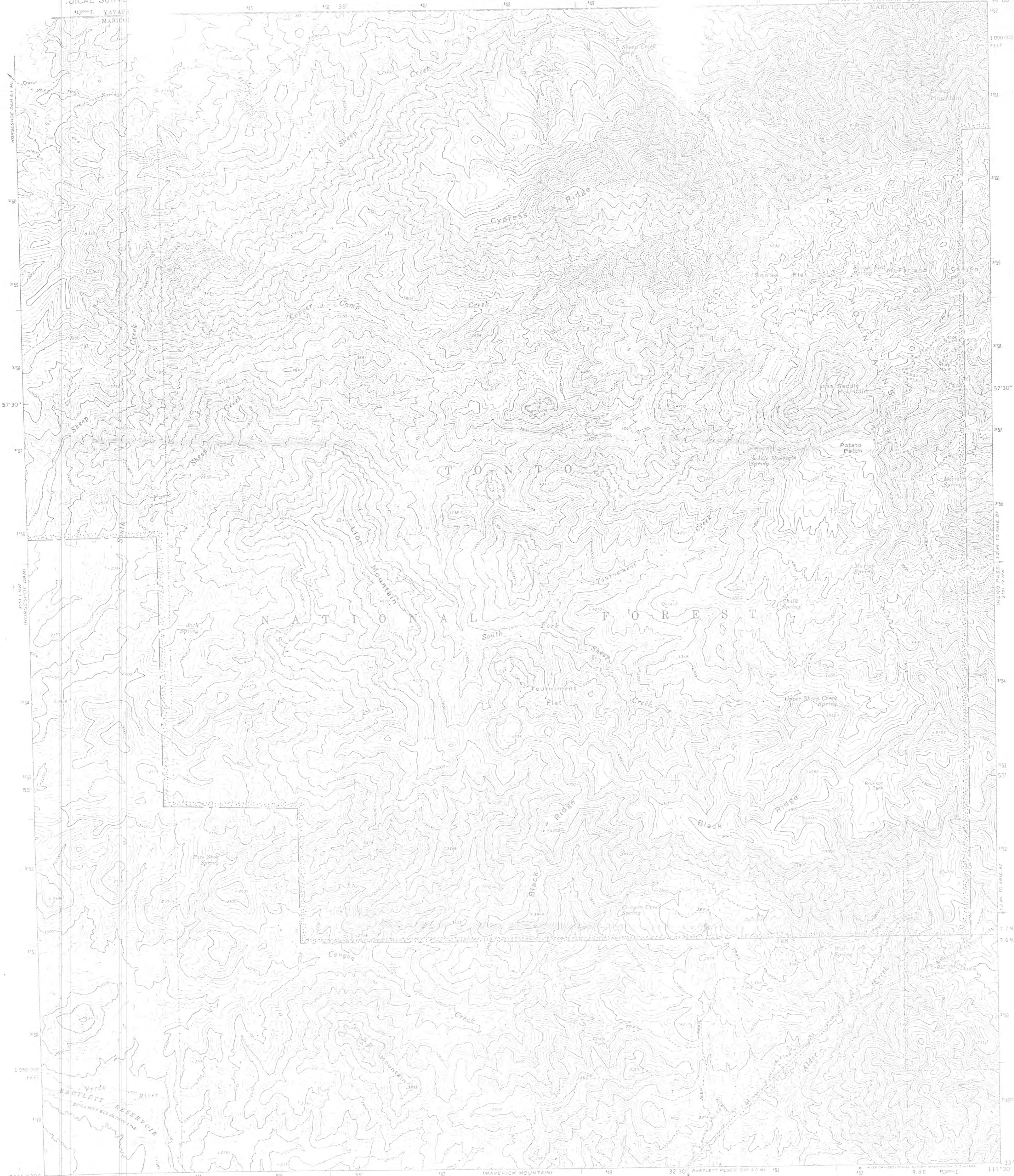
Mapped, edited, and published by the Geological Survey
Control by USGS and USC&GS
Topography by photogrammetric methods from aerial
photographs taken 1962. Field checked 1964
Underwater contours by the Salt River Project
Polyconic projection. 1927 North American datum
10,000-foot grid based on Arizona coordinate system, central zone
1000-meter Universal Transverse Mercator grid ticks,
zone 12, shown in blue
Fine red dashed lines indicate selected fence lines
Where omitted, land lines have not been established
Areas covered by dashed light blue pattern
are subject to controlled inundation



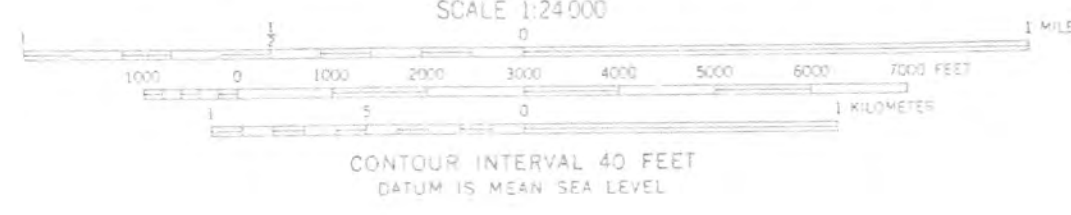
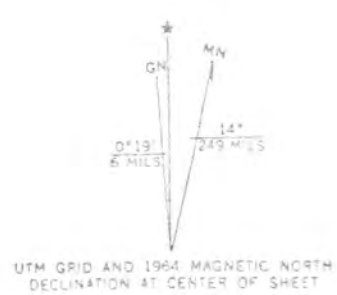
ROAD CLASSIFICATION
Light duty ————— Unimproved dirt —————

HORSESHOE DAM, ARIZ.
N3352 5-W11137 5/7.5
1964
AMS 3651 NW-SERIES V898

The exterior boundary of the Mazatzal Wilderness, Tonto National Forest,
Southwestern Region, January 17, 1986, as entered into the National Wilderness
Preservation System by the Act of August 28, 1984.



Maped, edited, and published by the Geological Survey
Control by USGS and USC&GS
Topography by photogrammetric methods from aerial
photographs taken 1962. Field checked 1964.
Underwater contours by the Salt River Project.
Polyconic projection. 1927 North American datum.
10,000-foot grid based on Arizona coordinate system, central zone.
1000-meter Universal Transverse Mercator grid ticks,
zone 12, shown in blue.
Where omitted, land lines have not been established.
Areas covered by dashed light blue pattern
is subject to controlled inundation.



ROAD CLASSIFICATION
Unimproved dirt

The exterior boundary of the Mazatzal Wilderness, Tonto National Forest,
Southwestern Region, January 17, 1986, as entered into the National Wilderness
Preservation System by the Act of August 28, 1984.

LION MOUNTAIN, ARIZ.
N3552 5-W11130/7.5
1964
AMS 3851 1 NE-SERIES V898