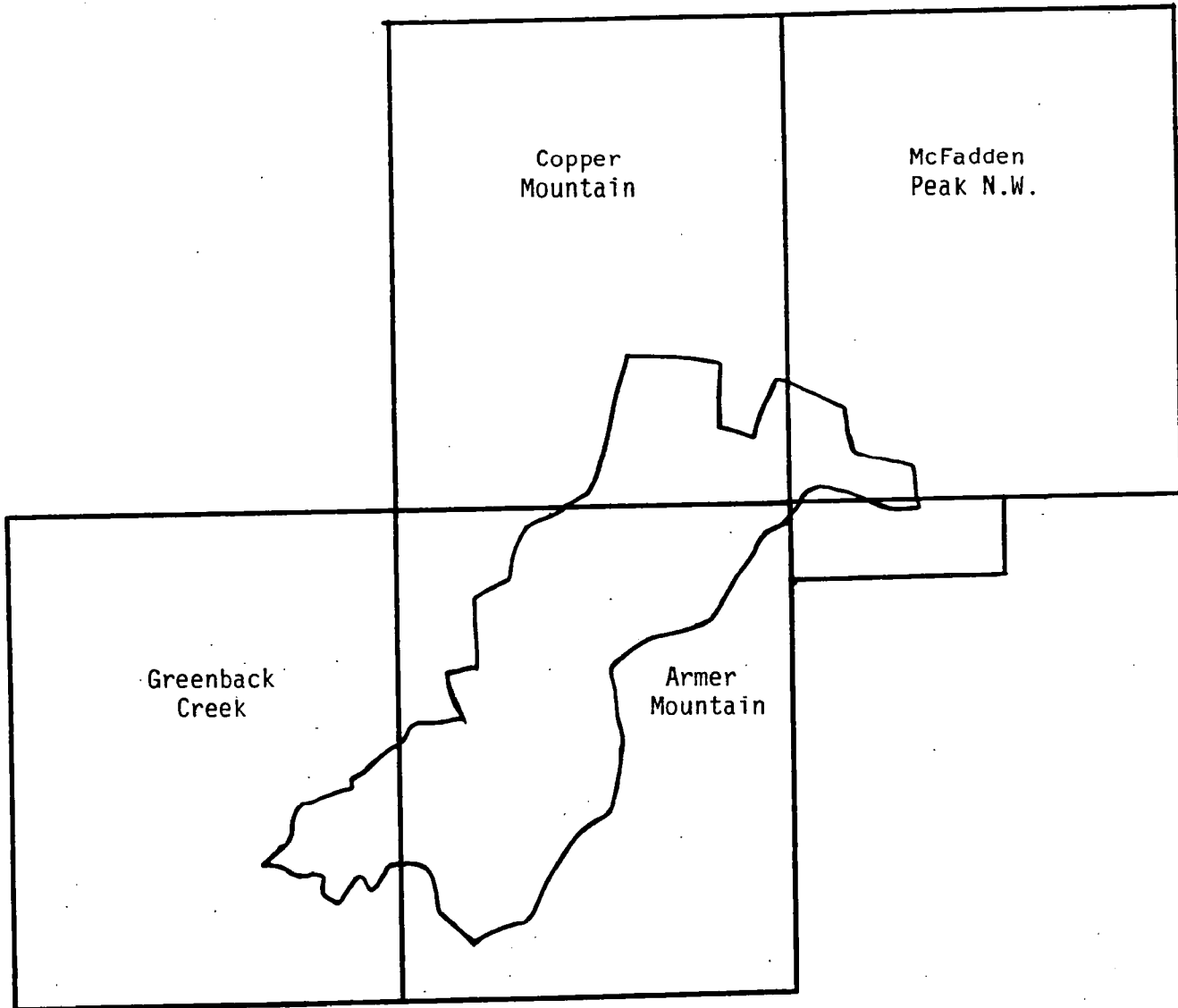


Composite Index Map

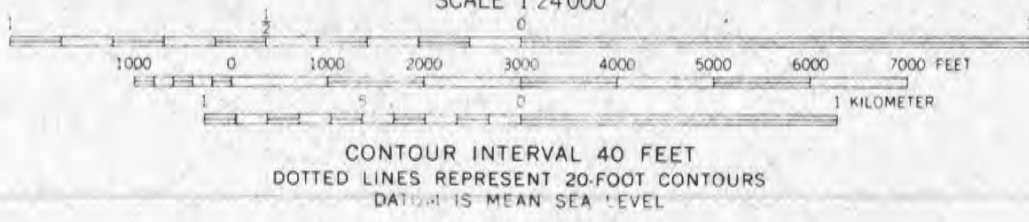
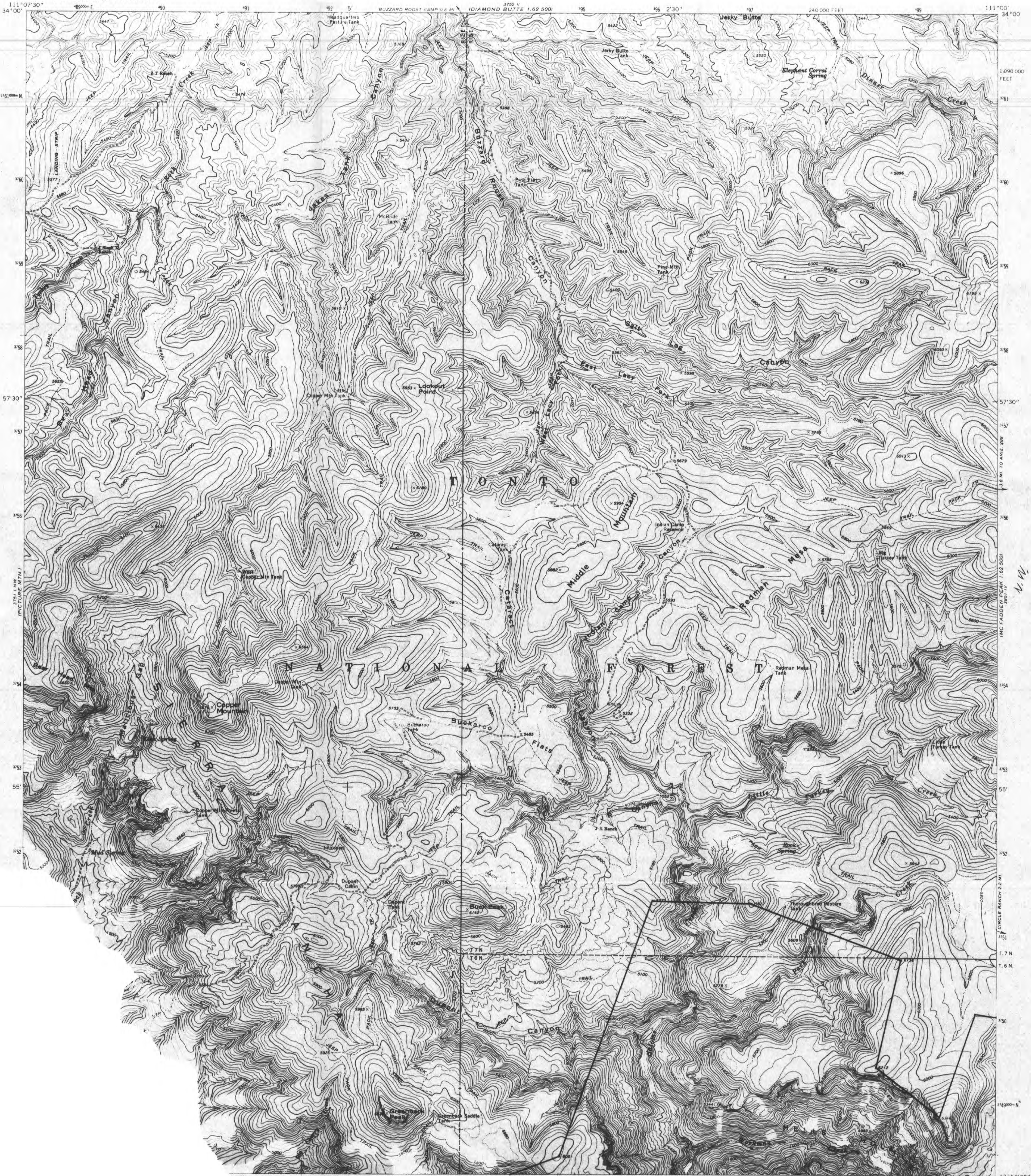
Salome Wilderness





The exterior boundary of the
SALOME WILDERNESS
Tonto National Forest, Southwestern Region
December 26, 1985, as entered into the
Wilderness Preservation System by the
Act of August 28, 1984

UNITED STATES
DEPARTMENT OF THE INTERIOR
GEOLOGICAL SURVEY



The exterior boundary of the
SALOME WILDERNESS
Tonto National Forest, Southwestern Region
December 26, 1985, as entered into the
Wilderness Preservation System by the
Act of August 28, 1984



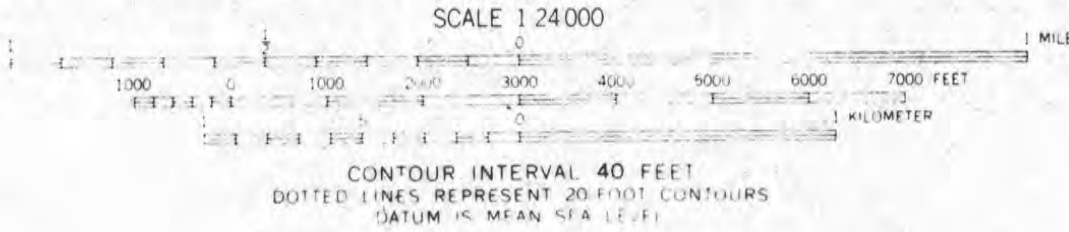
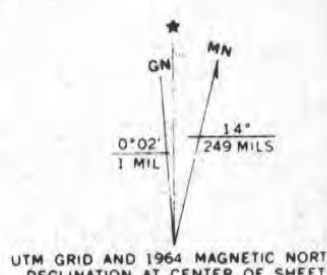
COPPER MTN., ARIZ.
N3352.5-W11100.7.5

1964
AMS 3751 I NE-SERIES V888



UNITED STATES
DEPARTMENT OF THE INTERIOR
GEOLOGICAL SURVEY

Mapped, edited, and published by the Geological Survey
Control by USGS and USC&GS
Topography by photogrammetric methods from aerial
photographs taken 1962. Field checked 1964
Polyconic projection. 1927 North American datum
10,000-foot grid based on Arizona coordinate system, east zone
1000-meter Universal Transverse Mercator grid ticks,
zone 12, shown in blue
Where omitted, land lines have not been established



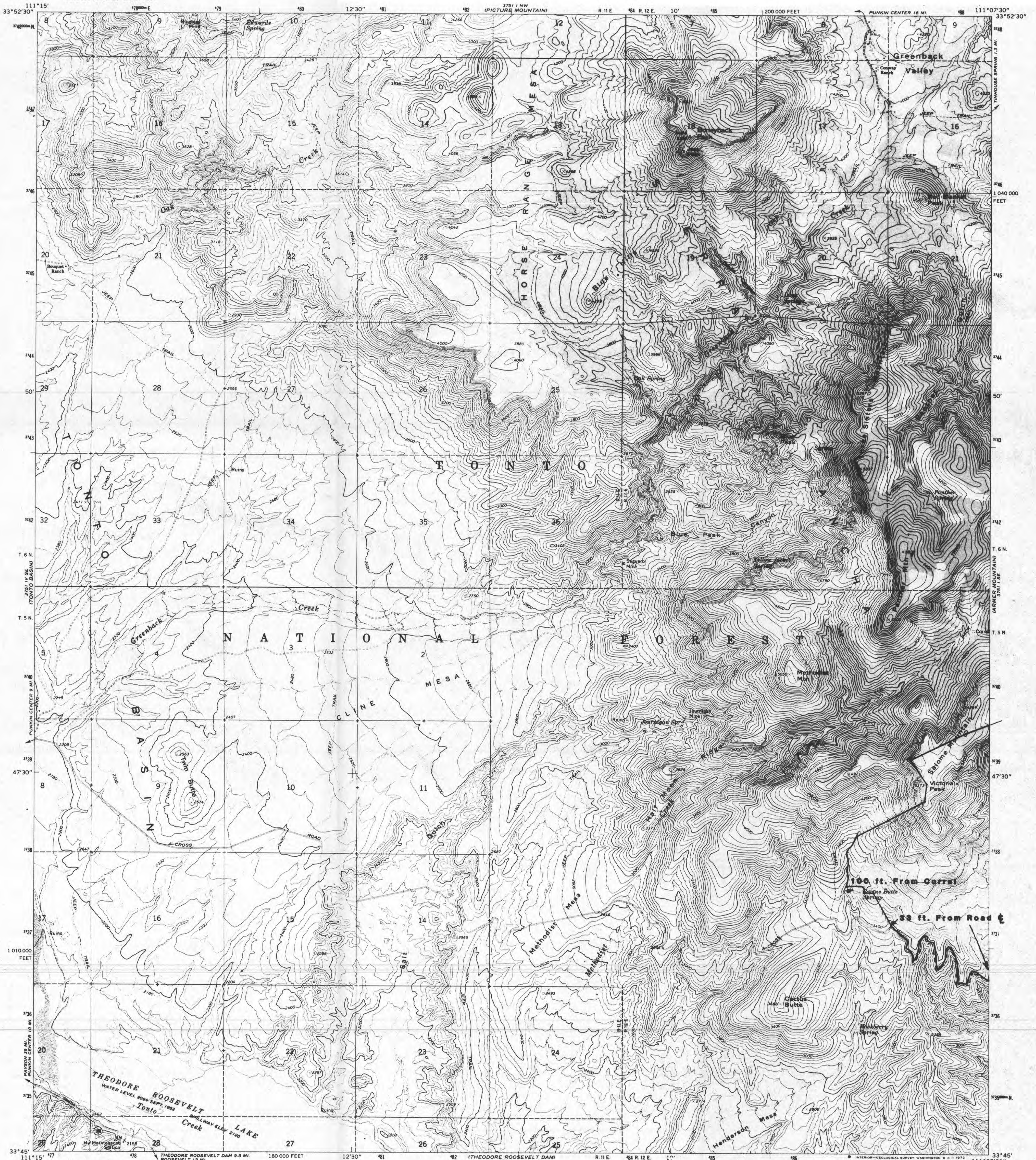
ROAD CLASSIFICATION
Unimproved dirt

The exterior boundary of the
SALOME WILDERNESS
Tonto National Forest, Southwestern Region
December 26, 1985, as entered into the
Wilderness Preservation System by the
Act of August 28, 1984

ARMER MOUNTAIN, ARIZ.
N3345-W11100/7.5

1964
AMS 3751 SE-SERIES V898

UNITED STATES
DEPARTMENT OF THE INTERIOR
GEOLOGICAL SURVEY

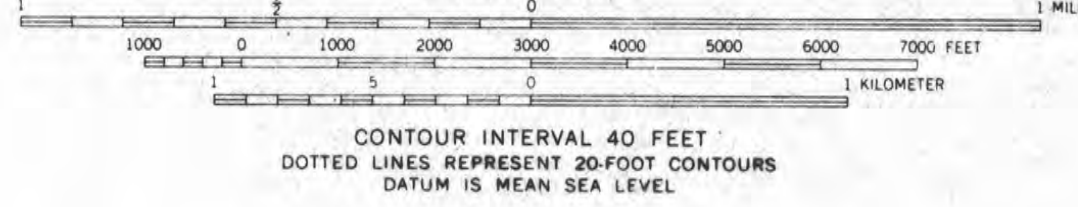
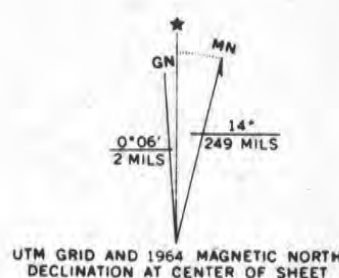


Mapped, edited, and published by the Geological Survey
Control by USGS and USC&GS

Topography by photogrammetric methods from aerial
photographs taken 1962. Field checked 1964

Polyconic projection. 1927 North American datum
10,000-foot grid based on Arizona coordinate system, east zone
1000-meter Universal Transverse Mercator grid ticks,
zone 12, shown in blue

Where omitted, land lines have not been established
Area covered by dashed light-blue pattern is subject
to controlled inundation



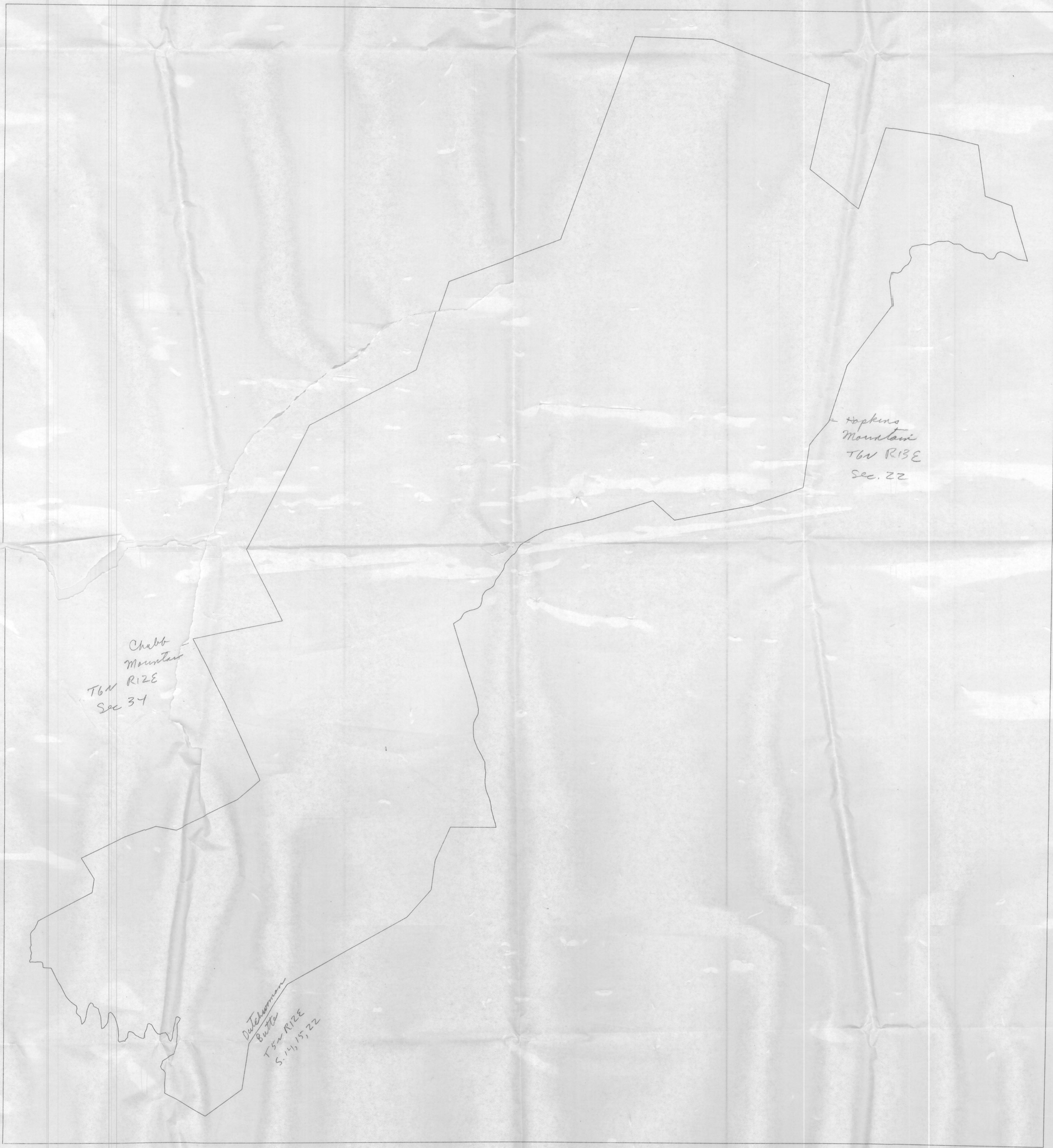
ROAD CLASSIFICATION
Light-duty ————— Unimproved dirt —————
○ State Route

The exterior boundary of the
SALOME WILDERNESS
Tonto National Forest, Southwestern Region
December 26, 1985, as entered into the
Wilderness Preservation System by the
Act of August 28, 1984

GREENBACK CREEK, ARIZ.
N3345—W11107.5/7.5

1964

AMS 3751:1 SW—SERIES Y898



SCALE = 1/16

SALOME WILDERNESS BDY
TIME 13:35 MST, 5/19/87.

SHEET 1.