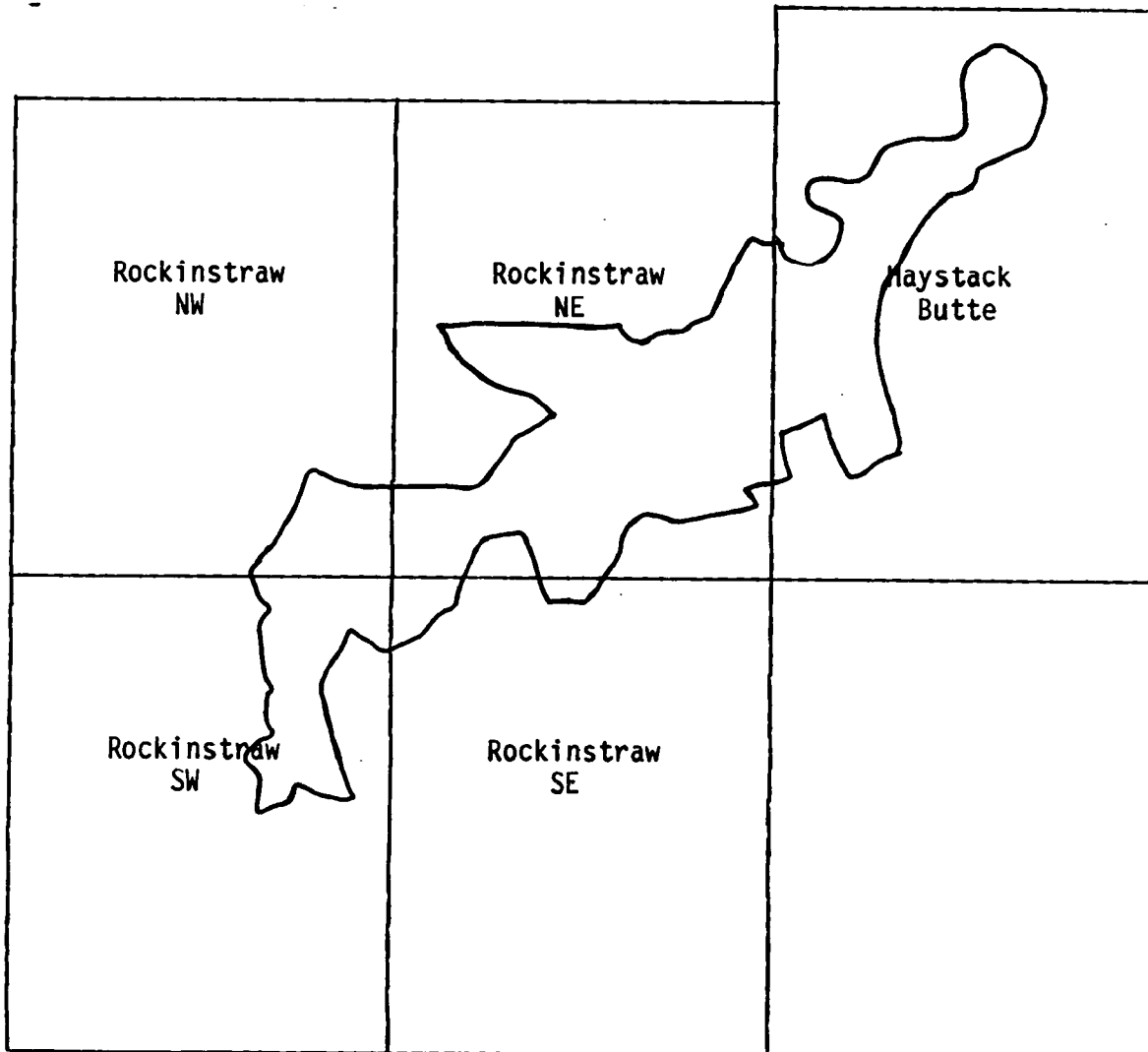
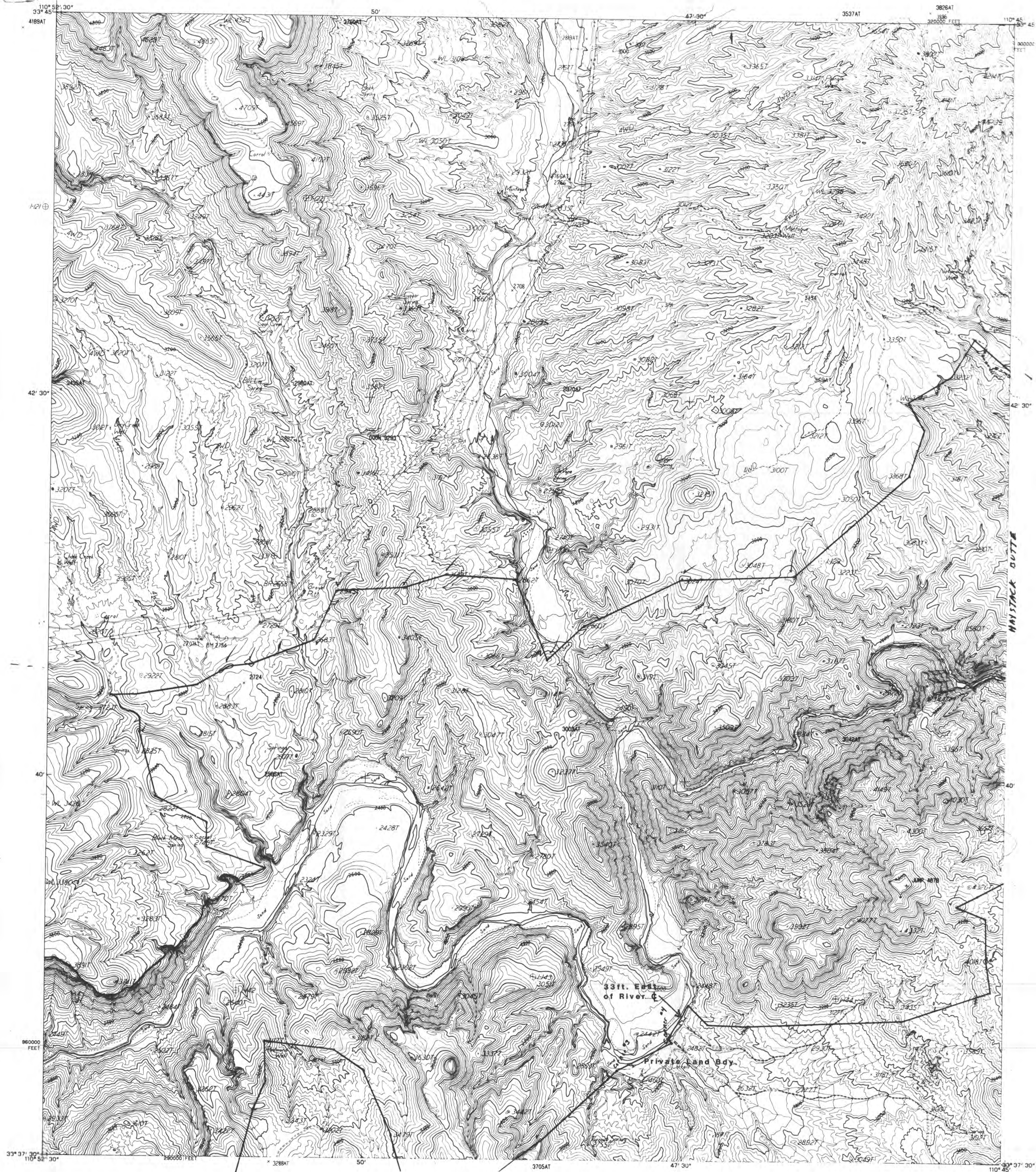


Compsite Index Map
Salt River Canyon Wilderness





The exterior boundary of
SALT RIVER CANYON WILDERNESS
Tonto National Forest, Southwestern Region
December 26, 1985, as entered into the
Wilderness Preservation System by the
Act of August 28, 1984

TO PLACE ON THE PREDICTED NORTH AMERICAN DATUM 1983 MOVE
THE PROJECTION LINES 2 METERS SOUTH AND 62 METERS EAST
AS SHOWN BY DASHED CORNER TICKS

ROCKINSTRAM MT NE AZ 1355-10 C-40 MC FADDEN
1:24000



The exterior boundary of
SALT RIVER CANYON WILDERNESS
Tonto National Forest, Southwestern Region
December 26, 1985, as entered into the
Wilderness Preservation System by the
Act of August 28, 1984

TO PLACE ON THE PREDICTED NORTH AMERICAN DATUM 1983 MOVE
THE PROJECTION LINES 2 METERS SOUTH AND 62 METERS EAST
AS SHOWN BY DASHED CORNER TICKS

ROCKINSTRAN MT NW AZ 1355-09 C-40 MC FADDEN

1:24000



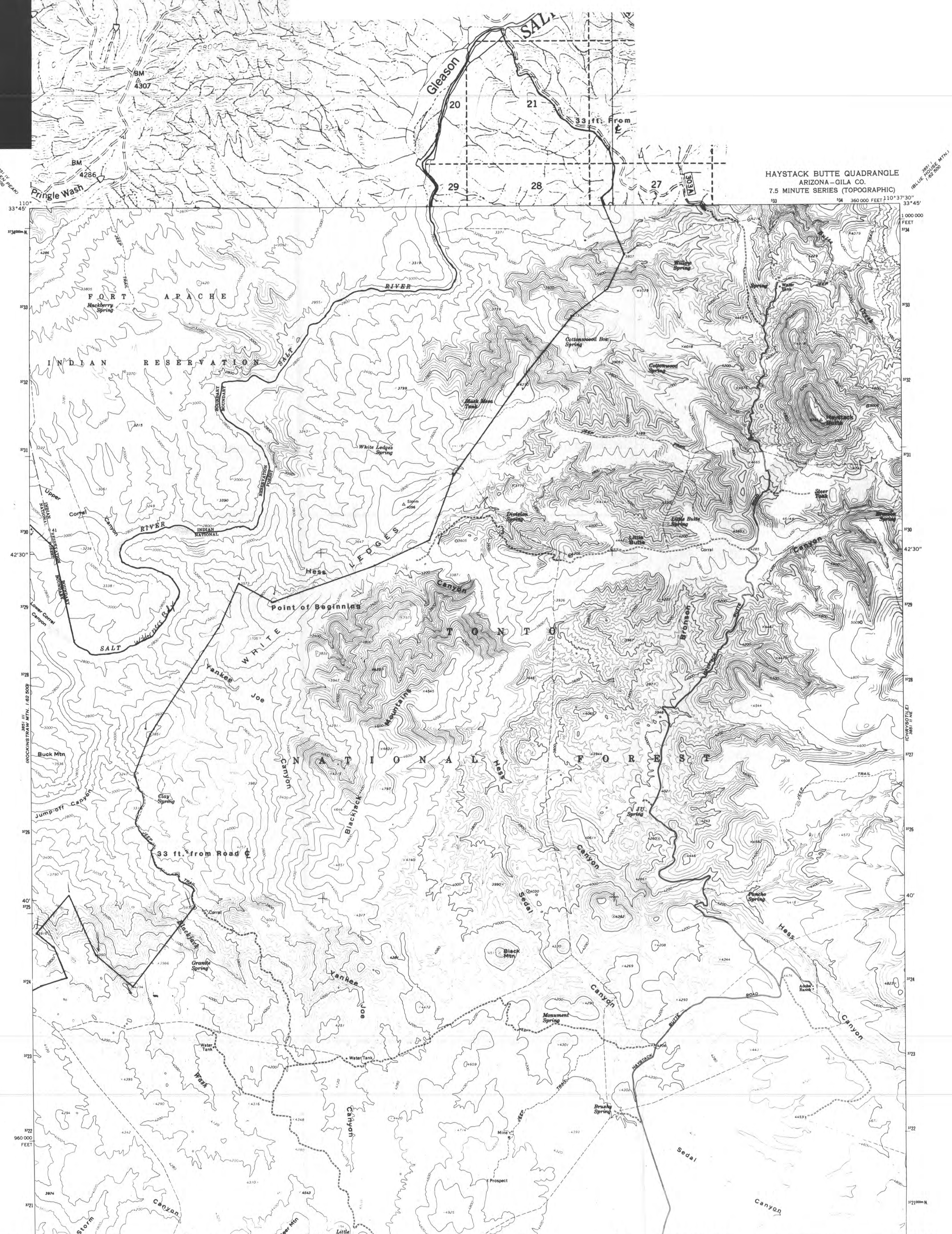
The exterior boundary of
SALT RIVER CANYON WILDERNESS
Tonto National Forest, Southwestern Region
December 26, 1985, as entered into the
Wilderness Preservation System by the
Act of August 28, 1984

TO PLACE ON THE PREDICTED NORTH AMERICAN DATUM 1983 MOVE
THE PROJECTION LINES 2 METERS SOUTH AND 62 METERS EAST
AS SHOWN BY DASHED CORNER TICKS

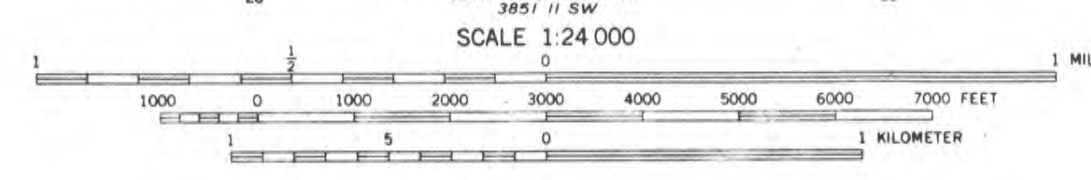
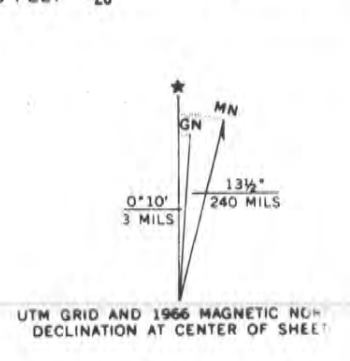
ROCKINSTRAY MT SW AZ 1355-11 C-40 MC FADDEN

1: 24000

HAYSTACK BUTTE QUADRANGLE
ARIZONA-GILA CO.
7.5 MINUTE SERIES (TOPOGRAPHIC)



Maped, edited, and published by the Geological Survey
Control by USGS and USC&GS
Topography by photogrammetric methods from aerial
photographs taken 1965. Field checked 1966
Polyconic projection. 1927 North American datum
10,000-foot grid based on Arizona coordinate system, east zone
1000-meter Universal Transverse Mercator grid ticks,
zone 12, shown in blue
Fine red dashed lines indicate selected fence lines
Land lines have not been established in this area



The exterior boundary of
SALT RIVER CANYON WILDERNESS
Tonto National Forest, Southwestern Region
December 26, 1985, as entered into the
Wilderness Preservation System by the
Act of August 28, 1984



ROAD CLASSIFICATION
Light-duty ———— Unimproved dirt - - - - -

HAYSTACK BUTTE, ARIZ.
N3337.5-W11037.5/7.5

1966
AMS 3851 II NW-SERIES V898