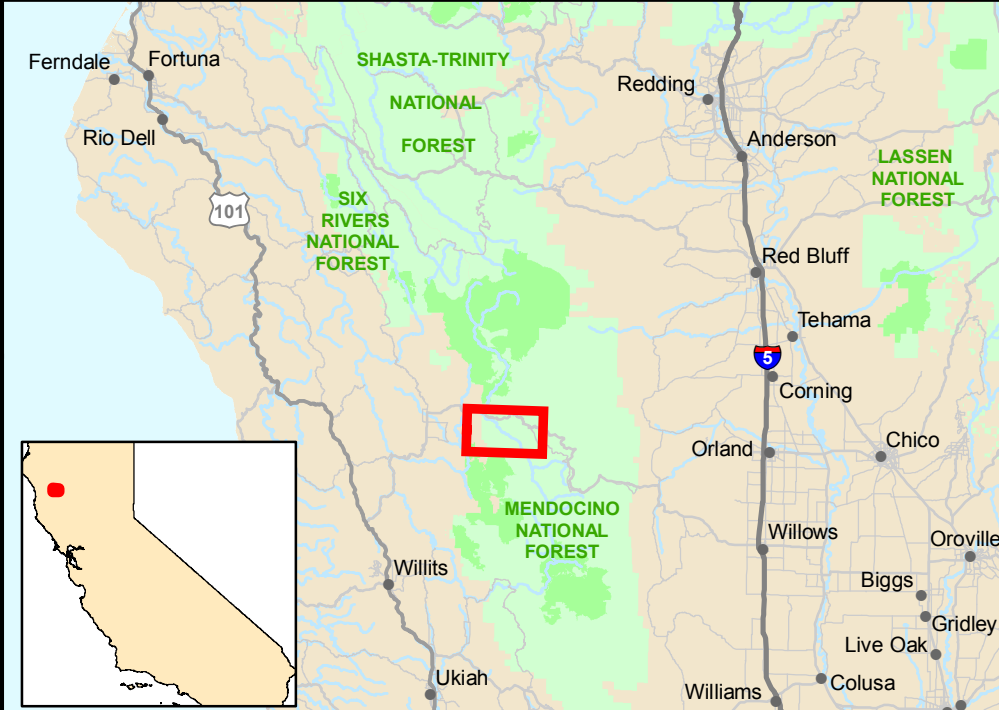


Vicinity Map

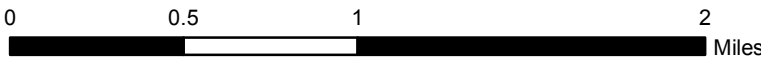


References

Map prepared by the USDA Forest Service,  
Region 5, Geospatial Services.  
Lands Data: USFS Lands Status Record System, 07/16/18  
Hydrography Data: USGS National Hydrography Dataset, 02/08/2018  
All other map data: USFS Topo

Disclaimer

The USDA Forest Service makes no warranty, expressed or implied  
regarding the data displayed on this map, and reserves the right to  
correct, update, modify, or replace this information without notification.



- National Wild and Scenic River Boundary
- Wild and Scenic River Classification
- Proclaimed National Forest Boundary
- National Forest System Lands
- Non-National Forest System Lands
- Wilderness Area
- USA County Boundary

National Wild and Scenic River Boundary

Wild and Scenic River Classification

Proclaimed National Forest Boundary

National Forest System Lands

Non-National Forest System Lands

Wilderness Area

USA County Boundary

Sheet 1 of 2- Refer to Index Map for Complete Collection  
Map Creation Date - August 1, 2018

Black Butte Wild and Scenic River

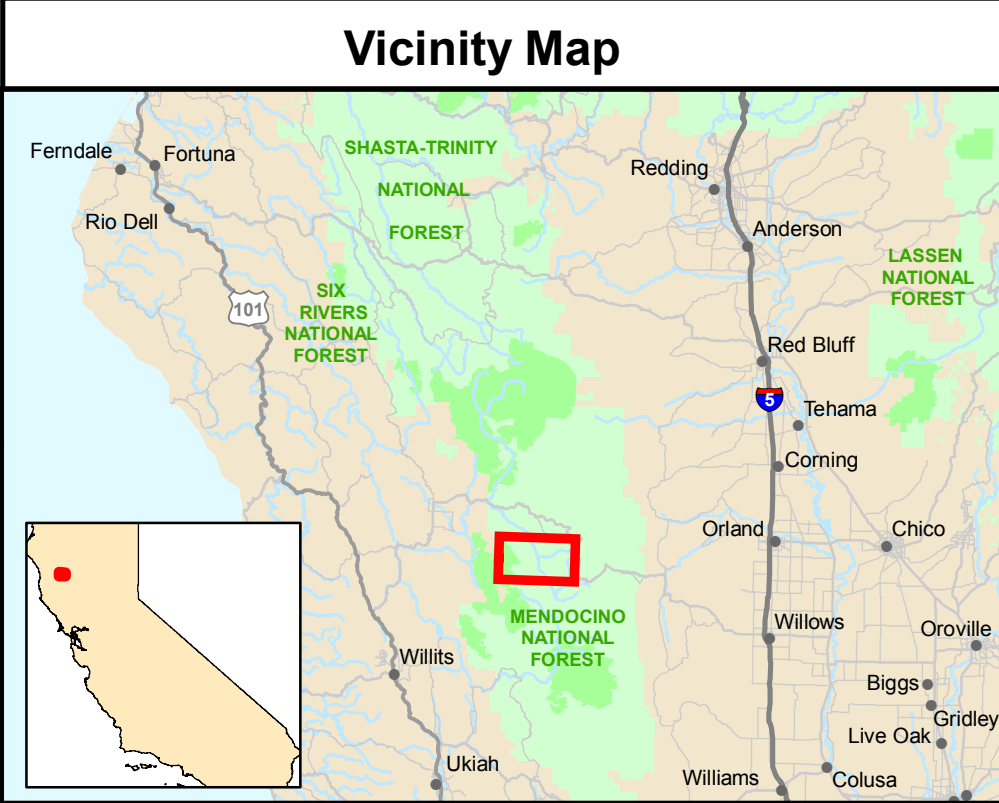
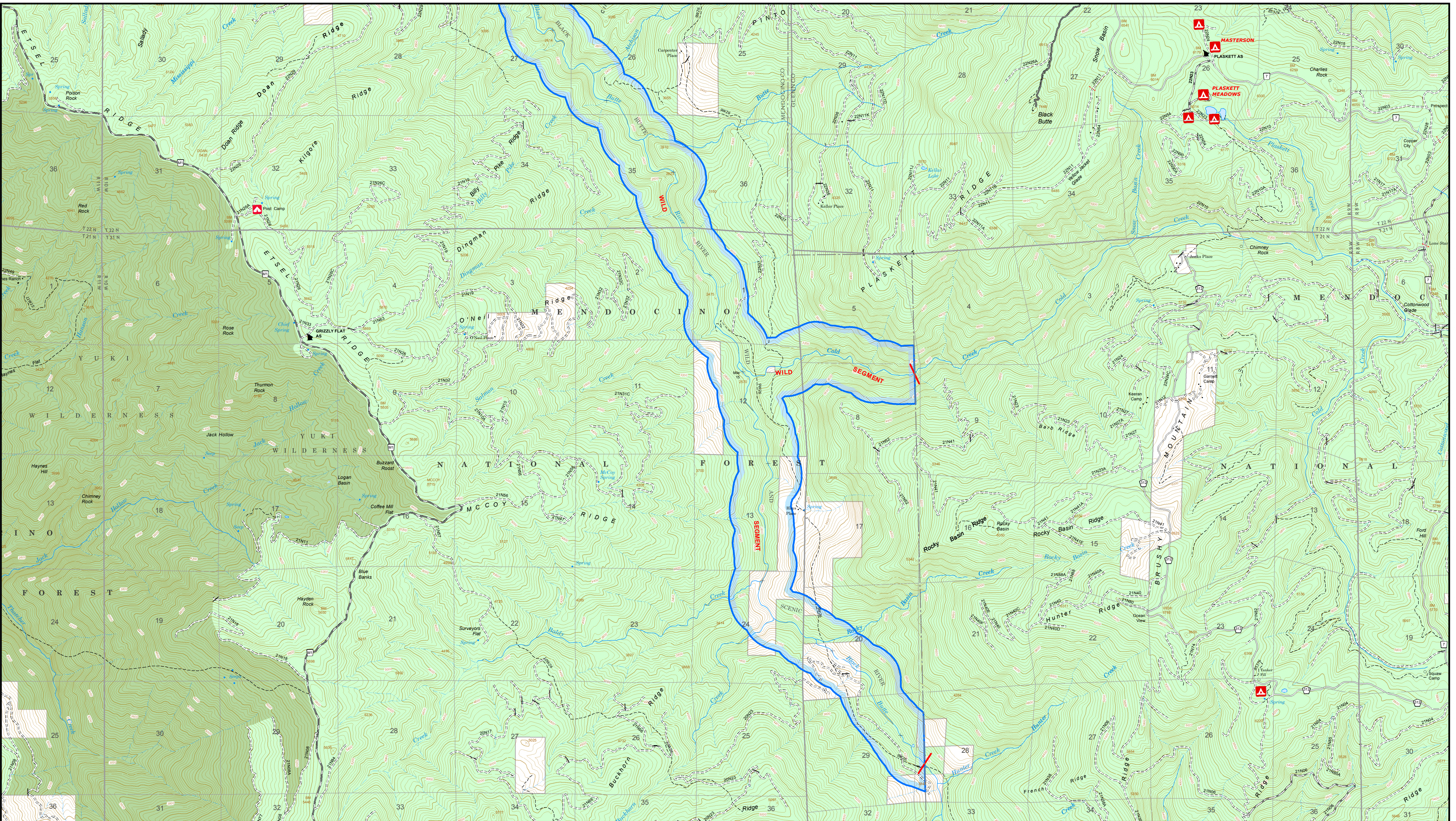
Final Map  
Legislation: Designated by the Northern California  
Coastal Wild Heritage Wilderness Act of 2006  
Public Law No. 109-362

Approximately 6,250 Acres  
Township 21-23 North, Range 10-11 West,  
Mount Diablo Meridian, County of Mendocino, CA

U.S. Forest Service -Pacific Southwest Region  
Mendocino National Forest  
U.S. Congressional District 2

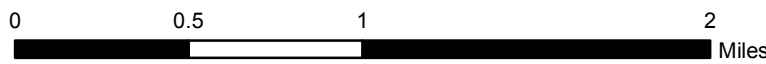
Copies of this map are available for public inspection in the  
Office of the Regional Forester, Pacific Southwest Region, Vallejo, CA





**References**  
Map prepared by the USDA Forest Service,  
Region 5, Geospatial Services.  
Lands Data: USFS Lands Status Record System 7/16/18  
Hydrography Data: USGS National Hydrography Dataset 02/08/2018  
All other map data: USFS Topo

**Disclaimer**  
The USDA Forest Service makes no warranty, expressed or implied  
regarding the data displayed on this map, and reserves the right to  
correct, update, modify, or replace this information without notification.



- National Wild and Scenic River Boundary
- Wild and Scenic River Classification
- Proclaimed National Forest Boundary
- National Forest System Lands
- Non-National Forest System Lands
- Wilderness Area
- USA County Boundary

Sheet 2 of 2- Refer to Index Map for Complete Collection  
Map Creation Date -August 1, 2018

**Black Butte Wild and Scenic River**  
Final Map  
Legislation: Designated by the Northern California  
Coastal Wild Heritage Wilderness Act of 2006  
Public Law No. 109-362

Approximately 6,250 Acres  
Township 21-23 North, Range 9-11 West,  
Mount Diablo Meridian, County of Mendocino, CA

U.S. Forest Service -Pacific Southwest Region  
Mendocino National Forest  
U.S. Congressional District 2

Copies of this map are available for public inspection in the  
Office of the Regional Forester, Pacific Southwest Region, Vallejo, CA