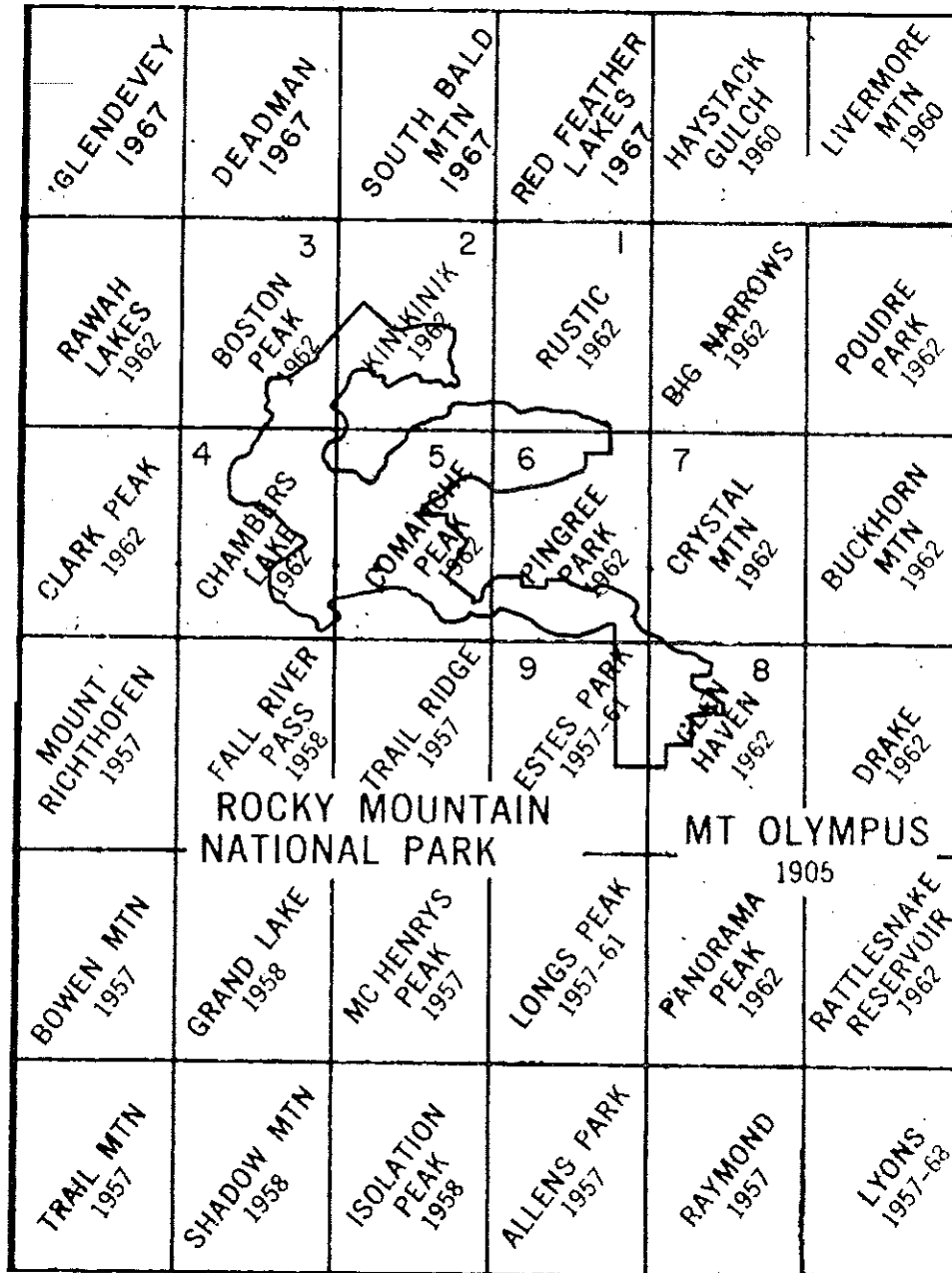


INDEX MAP

COMANCHE PEAK WILDERNESS



USDA FOREST SERVICE
Rocky Mountain Region

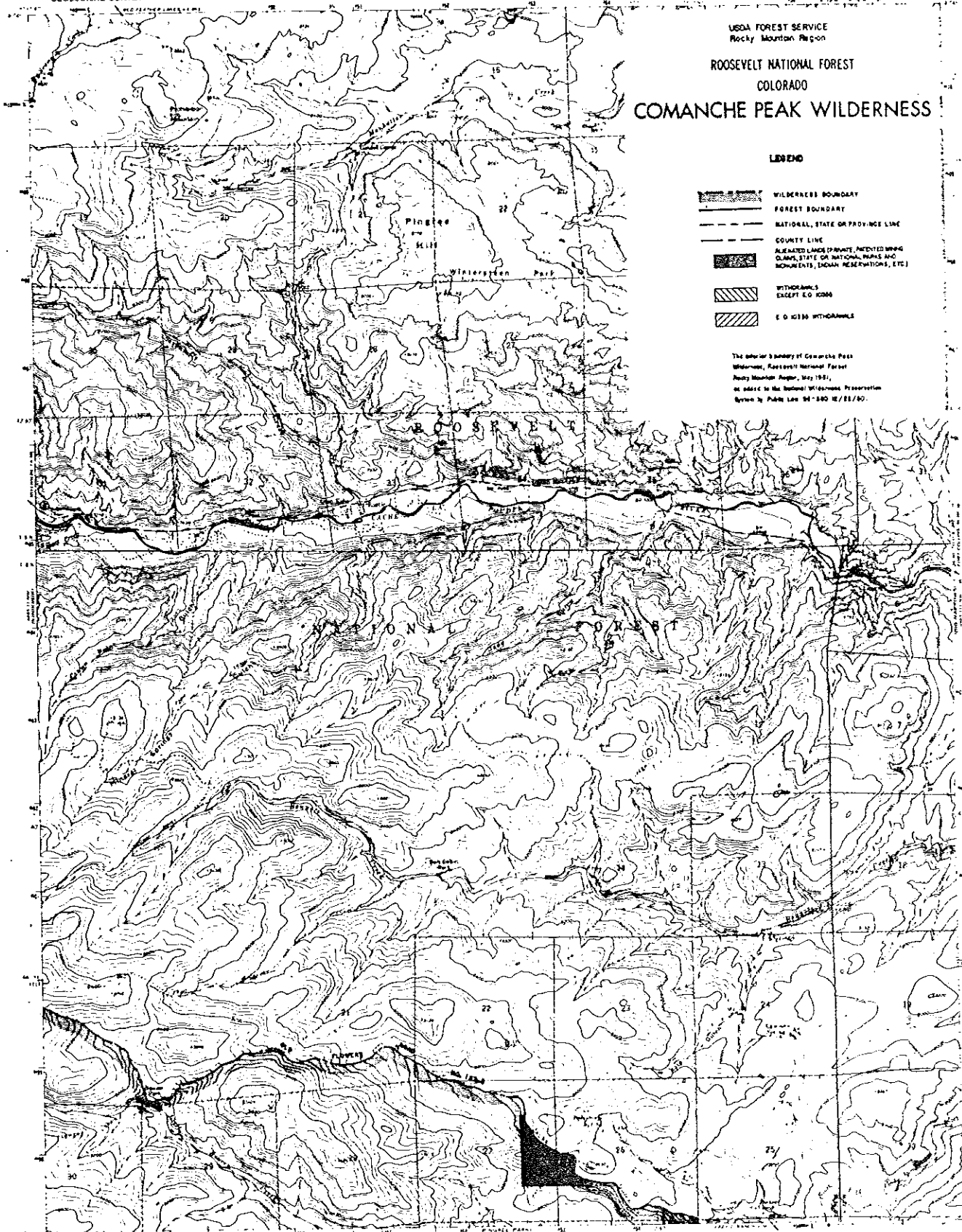
ROOSEVELT NATIONAL FOREST
COLORADO

COMANCHE PEAK WILDERNESS

LEGEND

- WILDERNESS BOUNDARY
- FOREST BOUNDARY
- NATIONAL, STATE OR PROVINCE LINE
- COUNTY LINE
- ALLEGED LINES (PRIVATE, INTERESTED SPRING, CLAIM, STATE OR NATIONAL PARKS AND MONUMENTS, INDIAN RESERVATIONS, ETC.)
- WITHDRAWALS EXCEPT E.O. 10586
- E.O. 10586 WITHDRAWALS

The exterior boundary of Comanche Peak
Wilderness, Roosevelt National Forest
Rocky Mountain Region, May 1957,
as added to the National Wilderness Preservation
System by Public Law 85-624 12/21/59.



Map and data published by the Geological Survey

Topographic data were obtained from the
U.S. Geological Survey, Denver, Colorado,
and the U.S. Forest Service, Rocky Mountain
Region, Denver, Colorado.

U.S. GEOLOGICAL SURVEY
BULLETIN 1214-D

FOR SALE BY U.S. GEOLOGICAL SURVEY, DENVER 25, COLORADO OR WASHINGTON 25, D.C.

RUSTIC, COLORADO


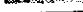




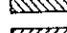
1962

USDA FOREST SERVICE
Rocky Mountain Region

ROOSEVELT NATIONAL FOREST
COLORADO

COMANCHE PEAK WILDERNESS

LEGEND

-  WILDERNESS BOUNDARY
-  FOREST BOUNDARY
-  NATIONAL, STATE OR PROVINCE LINE
-  COUNTY LINE
-  ALLOCATED LANDS (PRIVATE, RECREATION, QUARRY, STATE OR NATIONAL PARKS AND MONUMENTS, INDIAN RESERVATIONS, ETC.)
-  WITHDRAWALS EXCEPT U.S. 100M
-  U.S. 100M WITHDRAWALS

The interior boundary of Comanche Peak
Wilderness, Roosevelt National Forest,
Rocky Mountain Region, May 1962,
as added to the National Wilderness Preservation
System by Public Law 84-159 (12/21/62).

Map was edited and published by the Geological Survey
under the authority of the
Department of the Interior.
Photographs by aerial photography were made in
1958 and 1962.
Base map is U.S. Geological Survey 75-minute series
1:250,000 scale map of Colorado, published in 1958.
This map is a reproduction of the original map.
Copyright and other notices are on the back of the map.

THIS MAP COMPLETES THE NATIONAL SYSTEM OF
FOR SALE BY U.S. GEOLOGICAL SURVEY, DENVER 25, COLORADO OR WASHINGTON 25, D.C.
A POLYMER-BINDING "POCKET" MAP AND SYMBOLS IS AVAILABLE ON REQUEST.

KINKINIK COLO








1962

SHEET 2 OF 9

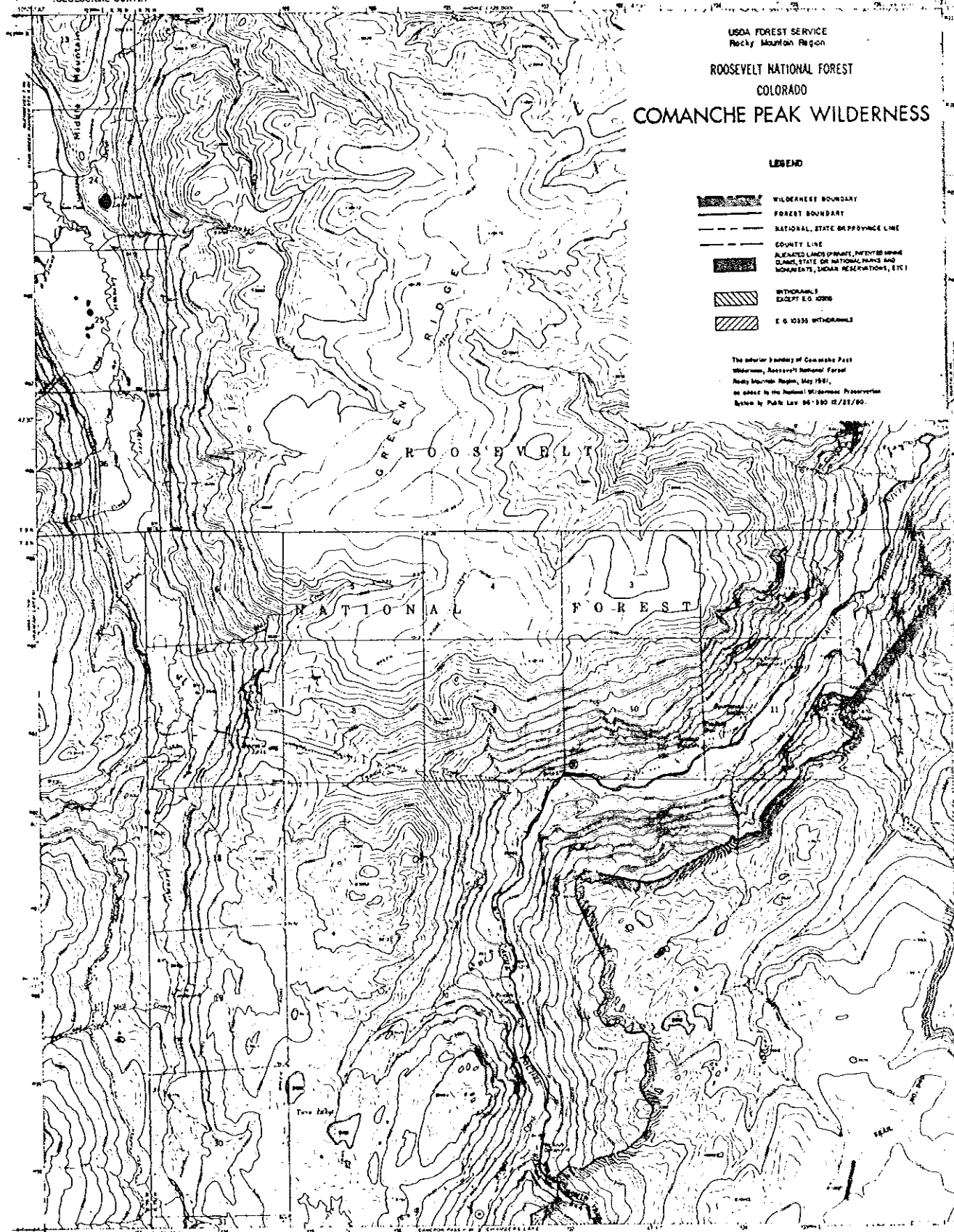
USDA FOREST SERVICE
Rocky Mountain Region

ROOSEVELT NATIONAL FOREST
COLORADO
COMANCHE PEAK WILDERNESS

LEGEND

- | | |
|---|---|
|  | WILDERNESS BOUNDARY |
|  | FOREST BOUNDARY |
|  | NATIONAL, STATE OR PROVINCE LINE |
|  | COUNTY LINE |
|  | ALIENATED LANDS (PRIVATE, REFINED MINING
CLAIMS, STATE OR NATIONAL PARKS AND
MONUMENTS, BUREAU RESERVATIONS, ETC) |
|  | WITHERHILLS
EXCEPT E.G. 10000 |
|  | E G 10000 WITHERHILLS |

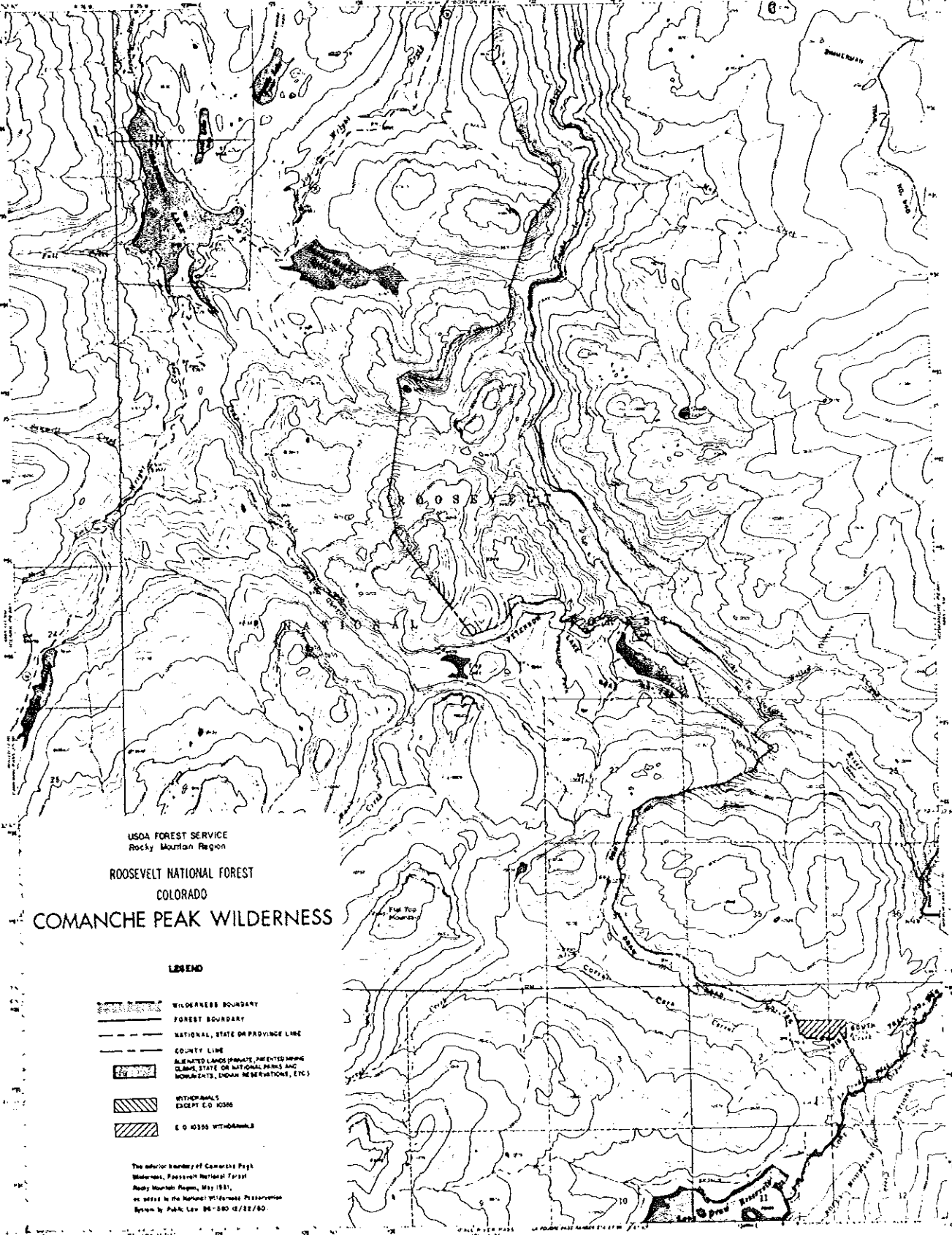
The anterior boundary of Comanche Peak
Wilderness, Roosevelt National Forest
Rocky Mountain Region, May 1981,
as added to the National Wilderness Preservation
System by Public Law 96-380 12/22/80.



Major editing and published by the Geological Society
 London by 1963 and 1964
 1. Geology of the 19th century was based on local
 geological data 1950-1960 and 1960-1962
 2. From 1960-1962 1962-1964 and 1964-1966
 3. 1966-1968 and 1968-1970 and 1970-1972
 4. 1972-1974 and 1974-1976 and 1976-1978
 5. 1978-1980 and 1980-1982 and 1982-1984
 6. 1984-1986 and 1986-1988 and 1988-1990
 7. 1990-1992 and 1992-1994 and 1994-1996
 8. 1996-1998 and 1998-2000 and 2000-2002
 9. 2002-2004 and 2004-2006 and 2006-2008
 10. 2008-2010 and 2010-2012 and 2012-2014
 11. 2014-2016 and 2016-2018 and 2018-2020
 12. 2020-2022 and 2022-2024 and 2024-2026
 13. 2026-2028 and 2028-2030 and 2030-2032
 14. 2032-2034 and 2034-2036 and 2036-2038
 15. 2038-2040 and 2040-2042 and 2042-2044
 16. 2044-2046 and 2046-2048 and 2048-2050
 17. 2050-2052 and 2052-2054 and 2054-2056
 18. 2056-2058 and 2058-2060 and 2060-2062
 19. 2062-2064 and 2064-2066 and 2066-2068
 20. 2068-2070 and 2070-2072 and 2072-2074
 21. 2074-2076 and 2076-2078 and 2078-2080
 22. 2080-2082 and 2082-2084 and 2084-2086
 23. 2086-2088 and 2088-2090 and 2090-2092
 24. 2092-2094 and 2094-2096 and 2096-2098
 25. 2098-2100 and 2100-2102 and 2102-2104
 26. 2104-2106 and 2106-2108 and 2108-2110
 27. 2110-2112 and 2112-2114 and 2114-2116
 28. 2116-2118 and 2118-2120 and 2120-2122
 29. 2122-2124 and 2124-2126 and 2126-2128
 30. 2128-2130 and 2130-2132 and 2132-2134
 31. 2134-2136 and 2136-2138 and 2138-2140
 32. 2140-2142 and 2142-2144 and 2144-2146
 33. 2146-2148 and 2148-2150 and 2150-2152
 34. 2152-2154 and 2154-2156 and 2156-2158
 35. 2158-2160 and 2160-2162 and 2162-2164
 36. 2164-2166 and 2166-2168 and 2168-2170
 37. 2170-2172 and 2172-2174 and 2174-2176
 38. 2176-2178 and 2178-2180 and 2180-2182
 39. 2182-2184 and 2184-2186 and 2186-2188
 40. 2188-2190 and 2190-2192 and 2192-2194
 41. 2194-2196 and 2196-2198 and 2198-2200
 42. 2200-2202 and 2202-2204 and 2204-2206
 43. 2206-2208 and 2208-2210 and 2210-2212
 44. 2212-2214 and 2214-2216 and 2216-2218
 45. 2218-2220 and 2220-2222 and 2222-2224
 46. 2224-2226 and 2226-2228 and 2228-2230
 47. 2230-2232 and 2232-2234 and 2234-2236
 48. 2236-2238 and 2238-2240 and 2240-2242
 49. 2242-2244 and 2244-2246 and 2246-2248
 50. 2248-2250 and 2250-2252 and 2252-2254
 51. 2254-2256 and 2256-2258 and 2258-2260
 52. 2260-2262 and 2262-2264 and 2264-2266
 53. 2266-2268 and 2268-2270 and 2270-2272
 54. 2272-2274 and 2274-2276 and 2276-2278
 55. 2278-2280 and 2280-2282 and 2282-2284
 56. 2284-2286 and 2286-2288 and 2288-2290
 57. 2290-2292 and 2292-2294 and 2294-2296
 58. 2296-2298 and 2298-2300 and 2300-2302
 59. 2302-2304 and 2304-2306 and 2306-2308
 60. 2308-2310 and 2310-2312 and 2312-2314
 61. 2314-2316 and 2316-2318 and 2318-2320
 62. 2320-2322 and 2322-2324 and 2324-2326
 63. 2326-2328 and 2328-2330 and 2330-2332
 64. 2332-2334 and 2334-2336 and 2336-2338
 65. 2338-2340 and 2340-2342 and 2342-2344
 66. 2344-2346 and 2346-2348 and 2348-2350
 67. 2350-2352 and 2352-2354 and 2354-2356
 68. 2356-2358 and 2358-2360 and 2360-2362
 69. 2362-2364 and 2364-2366 and 2366-2368
 70. 2368-2370 and 2370-2372 and 2372-2374
 71. 2374-2376 and 2376-2378 and 2378-2380
 72. 2380-2382 and 2382-2384 and 2384-2386
 73. 2386-2388 and 2388-2390 and 2390-2392
 74. 2392-2394 and 2394-2396 and 2396-2398
 75. 2398-2400 and 2400-2402 and 2402-2404
 76. 2404-2406 and 2406-2408 and 2408-2410
 77. 2410-2412 and 2412-2414 and 2414-2416
 78. 2416-2418 and 2418-2420 and 2420-2422
 79. 2422-2424 and 2424-2426 and 2426-2428
 80. 2428-2430 and 2430-2432 and 2432-2434
 81. 2434-2436 and 2436-2438 and 2438-2440
 82. 2440-2442 and 2442-2444 and 2444-2446
 83. 2446-2448 and 2448-2450 and 2450-2452
 84. 2452-2454 and 2454-2456 and 2456-2458
 85. 2458-2460 and 2460-2462 and 2462-2464
 86. 2464-2466 and 2466-2468 and 2468-2470
 87. 2470-2472 and 2472-2474 and 2474-2476
 88. 2476-2478 and 2478-2480 and 2480-2482
 89. 2482-2484 and 2484-2486 and 2486-2488
 90. 2488-2490 and 2490-2492 and 2492-2494
 91. 2494-2496 and 2496-2498 and 2498-2500
 92. 2500-2502 and 2502-2504 and 2504-2506
 93. 2506-2508 and 2508-2510 and 2510-2512
 94. 2512-2514 and 2514-2516 and 2516-2518
 95. 2518-2520 and 2520-2522 and 2522-2524
 96. 2524-2526 and 2526-2528 and 2528-2530
 97. 2530-2532 and 2532-2534 and 2534-2536
 98. 2536-2538 and 2538-2540 and 2540-2542
 99. 2542-2544 and 2544-2546 and 2546-2548
 100. 2548-2550 and 2550-2552 and 2552-2554
 101. 2554-2556 and 2556-2558 and 2558-2560
 102. 2560-2562 and 2562-25

UNIVERSITY OF CALIFORNIA

BOSTON PEAK COLO



USDA FOREST SERVICE
Rocky Mountain Region

ROOSEVELT NATIONAL FOREST
COLORADO

COMANCHE PEAK WILDERNESS

LEGEND

- WILDERNESS BOUNDARY
- FOREST BOUNDARY
- NATIONAL, STATE OR PROVINCE LINE
- COUNTY LINE
- ALLEGATED LANDS (PRIVATE, PRE-ENTERED MINING CLAIMS, STATE OR NATIONAL PARKS AND MONUMENTS, INDIAN RESERVATIONS, ETC.)
- WITHDRAWALS EXCEPT E.O. 10336
- E.O. 10336 WITHDRAWALS

The exterior boundary of Comanche Peak Wilderness, Roosevelt National Forest, Rocky Mountain Region, May 1981, as passed by the National Wilderness Preservation System by Public Law 96-580 (12/11/80).

Map made, edited, and published by the Geological Survey, U.S. Department of the Interior.

Topographic base map prepared by the Geological Survey, U.S. Department of the Interior, 1962.

For the production of this map, the Geological Survey, U.S. Department of the Interior, 1962.

For the production of this map, the Geological Survey, U.S. Department of the Interior, 1962.

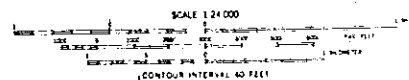
For the production of this map, the Geological Survey, U.S. Department of the Interior, 1962.

For the production of this map, the Geological Survey, U.S. Department of the Interior, 1962.

For the production of this map, the Geological Survey, U.S. Department of the Interior, 1962.

For the production of this map, the Geological Survey, U.S. Department of the Interior, 1962.

For the production of this map, the Geological Survey, U.S. Department of the Interior, 1962.



CONTOUR INTERVAL: 40 FEET
NATIONAL GEODESIC VERTICAL DATUM OF 1929

THIS MAP COMPLETES THE NATIONAL MAP SERIES STAGHORN FOR SALE BY U.S. GEOLOGICAL SURVEY, DENVER, COLORADO 80235 OR RESTON, VIRGINIA 22092 A FOLDER DESCRIBING TOPOGRAPHIC MAPS AND SYMBOLS IS AVAILABLE ON REQUEST

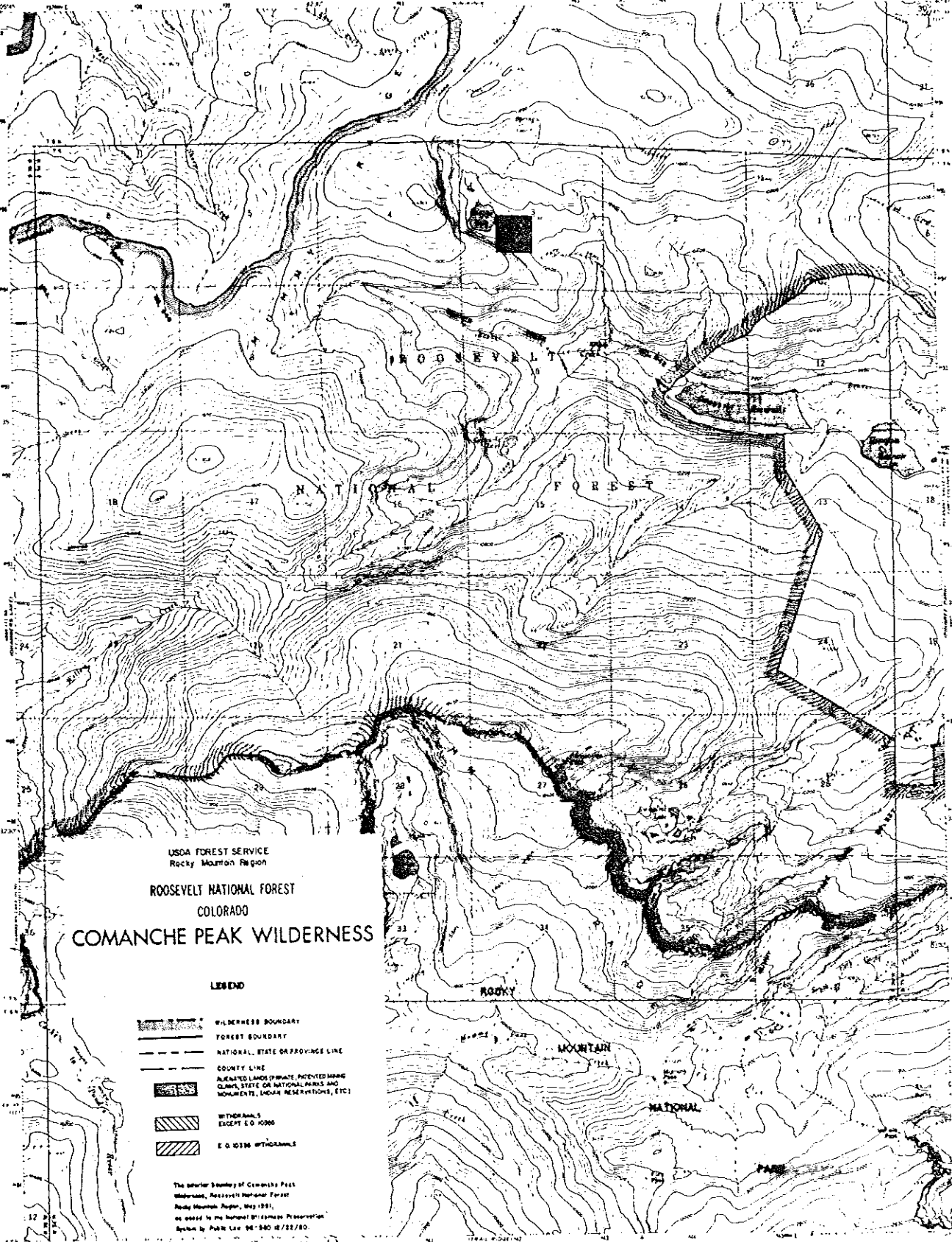
CHAMBERS LAKE, COLO.

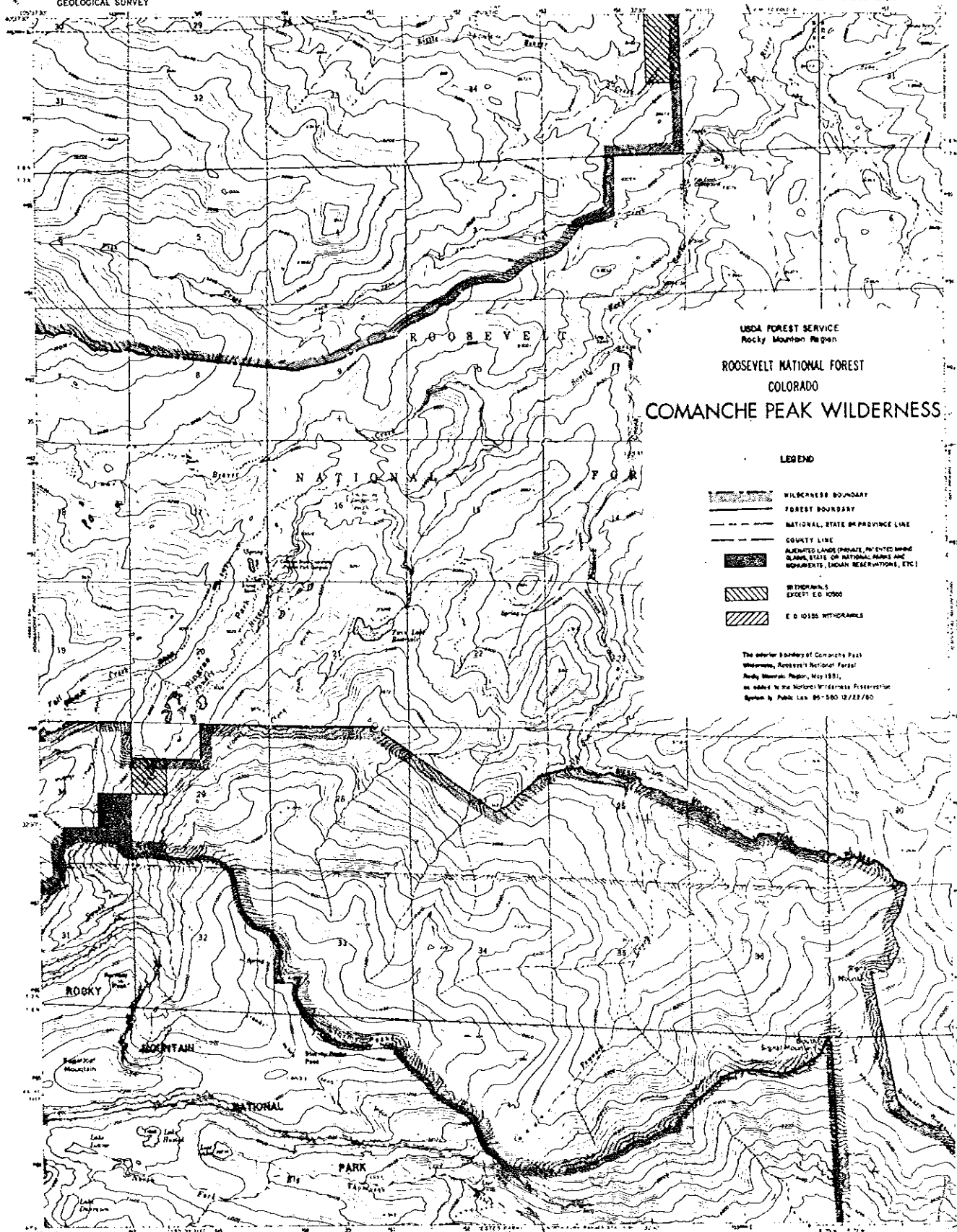
1962

PHOTOGRAPHIC 1977

1977

SHEET 4 OF 9





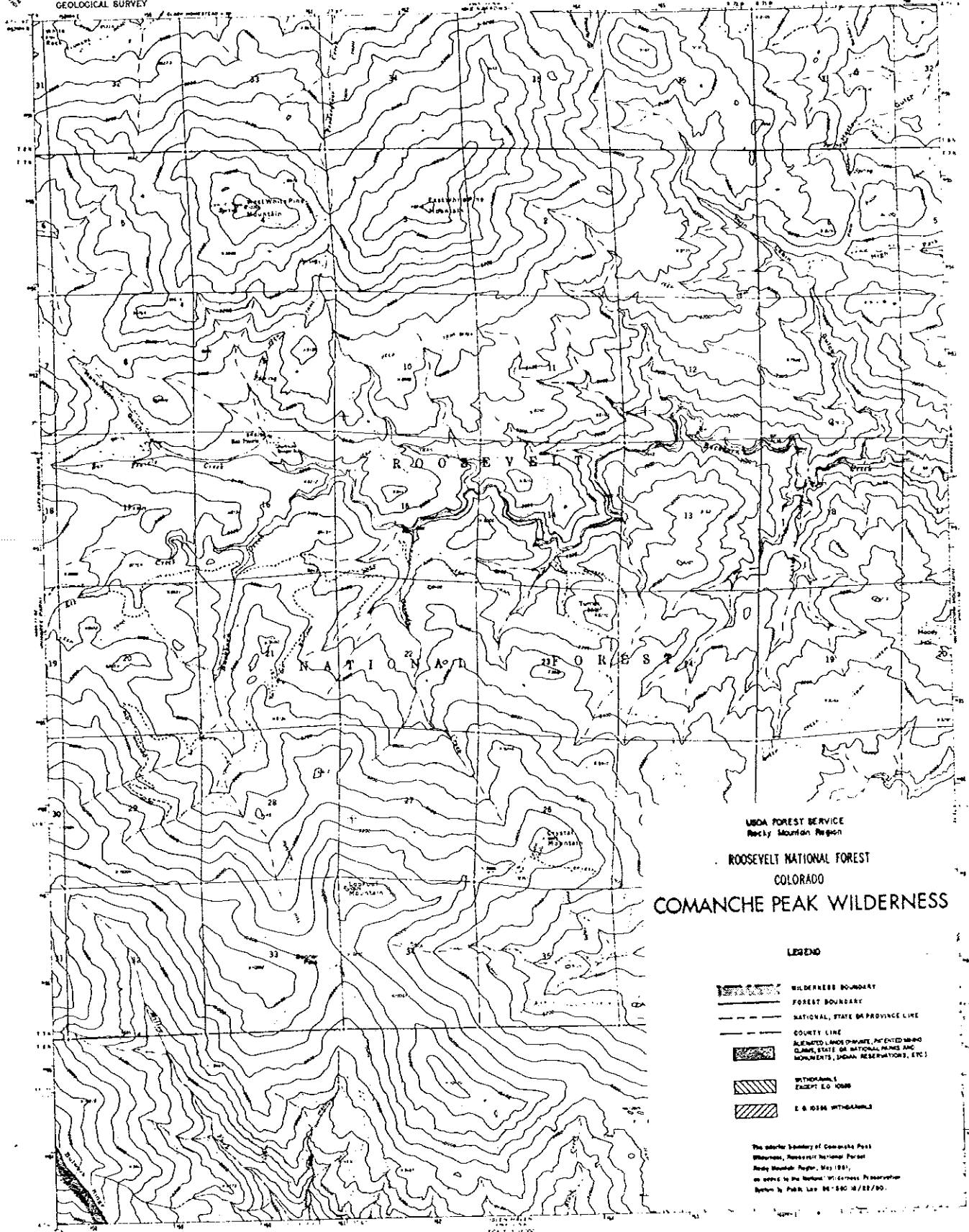
Map made, edited, and published by the Geological Survey
Compiled by: S. C. Smith and J. C. Smith
Field notes by: S. C. Smith and J. C. Smith
Field notes date: 1958, 1960, 1962
Publication: 1963, 1964, 1965, 1966, 1967, 1968, 1969, 1970, 1971, 1972, 1973, 1974, 1975, 1976, 1977, 1978, 1979, 1980, 1981, 1982, 1983, 1984, 1985, 1986, 1987, 1988, 1989, 1990, 1991, 1992, 1993, 1994, 1995, 1996, 1997, 1998, 1999, 2000, 2001, 2002, 2003, 2004, 2005, 2006, 2007, 2008, 2009, 2010, 2011, 2012, 2013, 2014, 2015, 2016, 2017, 2018, 2019, 2020, 2021, 2022, 2023, 2024, 2025

FOR SALE BY U.S. GEOLOGICAL SURVEY, DENVER 25, COLORADO OR WASHINGTON 25, D.C.
A FOLDER CONTAINING THIS MAP AND TWO OTHERS IS AVAILABLE ON REQUEST

PINGREE PARK, COLO.

1963

SHEET 6 OF 9



USDA FOREST SERVICE
Rocky Mountain Region

ROOSEVELT NATIONAL FOREST
COLORADO

COMANCHE PEAK WILDERNESS

LEGEND

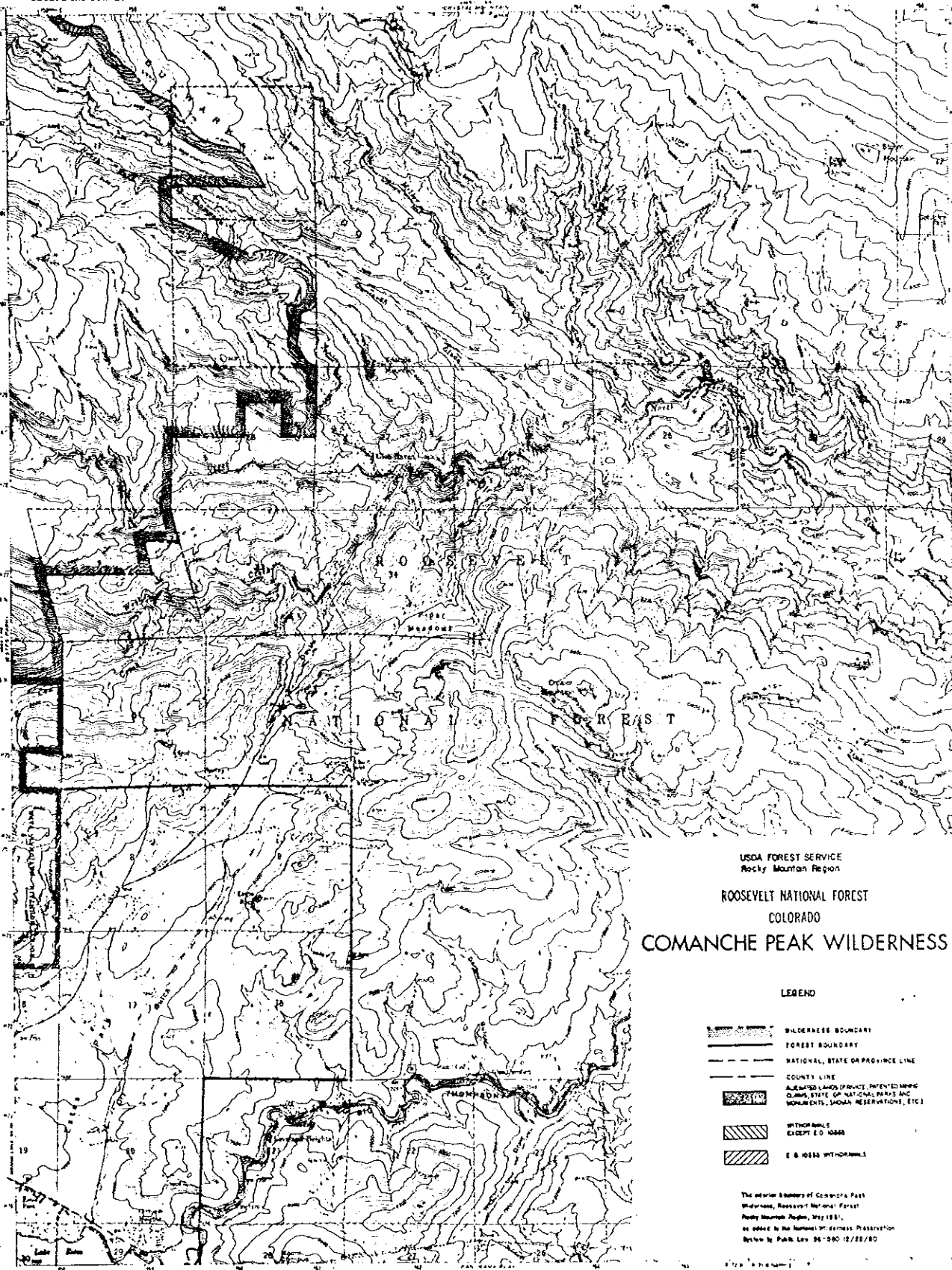
- WILDERNESS BOUNDARY
- FOREST BOUNDARY
- NATIONAL, STATE OR PROVINCE LINE
- COUNTY LINE
- ALLEGED LAND-OWNERS, PATENTED MINES, CLAIMS, ETC. OR NATIONAL PLACES AND MONUMENTS, INDIAN RESERVATIONS, ETC.
- WITHDRAWALS EXCEPT U.S. LAND
- U.S. & FOREIGN WITHDRAWALS

The interior boundary of Comanche Peak
Wilderness, Roosevelt National Forest
Rocky Mountain Region, May 1981,
as shown in the National Wilderness Preservation
System, is shown by the dashed line.

Map edited and published by the Geological Survey
from U.S. Geological Survey maps
and other sources. The map was
prepared by the Geological Survey
in cooperation with the U.S. Forest Service.
The map is based on the 1977 National Forest
Inventory, which was prepared by the U.S. Forest Service
and the Geological Survey. The map is based on the
1977 National Forest Inventory, which was prepared by the
U.S. Forest Service and the Geological Survey.

SCALE 1:50,000
FOR SALE BY U.S. GEOLOGICAL SURVEY, DEPARTMENT OF THE INTERIOR, WASHINGTON, D.C.
A QUOTE: "GEOLOGICAL SURVEY, DEPARTMENT OF THE INTERIOR, WASHINGTON, D.C."

CRYSTAL MOUNTAIN, COLO.
1982
SHEET 7 OF 9



USDA FOREST SERVICE
Rocky Mountain Region

ROOSEVELT NATIONAL FOREST
COLORADO
COMANCHE PEAK WILDERNESS

LEGEND

- WILDERNESS BOUNDARY
- FOREST BOUNDARY
- NATIONAL, STATE OR PROVINCE LINE
- COUNTY LINE
- ALLEGED LANDS (PRIVATE, PATENTED, MINING CLAIMS, STATE OR NATIONAL PARKS AND MONUMENTS, INDIAN RESERVATIONS, ETC.)
- WITHIN BUILT EXCEPT E.O. 10466
- E.O. 10466 WITHIN BUILT

The interior boundary of Comanche Peak Wilderness, Roosevelt National Forest, Rocky Mountain Region, May 1981, as added to the National Wilderness Preservation System by Public Law 96-580 12/22/80

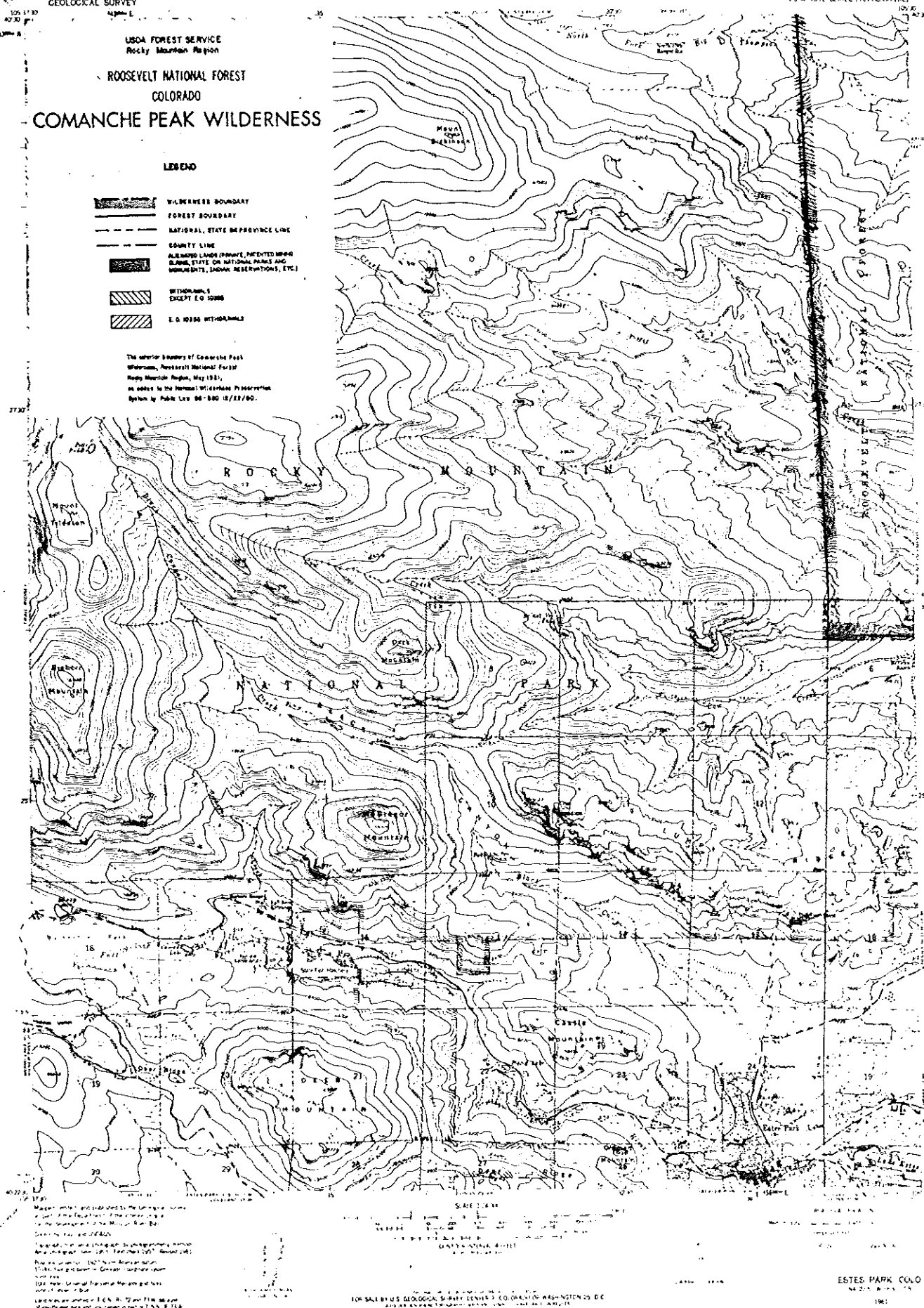
Map made, edited, and published by the Geological Survey
Copyright 1981 and 1982
Topographic information is reproduction and
copyright of the U.S. Geological Survey
Reproduction of this map is prohibited without
written permission of the U.S. Geological Survey
This map is a reproduction of the original map
and is not a substitute for the original map
The map is a reproduction of the original map
and is not a substitute for the original map

ROOSEVELT NATIONAL FOREST
COLORADO

LEGEND

- WILDERNESS BOUNDARY
FOREST SERVICE
NATIONAL, STATE OR PROVINCE LINE
COUNTY LINE
ALLEGED LAND (PRIVATE, PATENTED MINING CLAIM, STATE OR NATIONAL PARKS AND MONUMENTS, INDIAN RESERVATIONS, ETC.)
BOTHAMBLE
EXCEPT E.O. 10880
E.O. 10880 BOTHAMBLE

The exterior boundary of Comanche Peak
Watermark, Anacostia National Forest
Rocky Mountain Region, May 1983,
as added to the National Wilderness Preservation
System by Public Law 98-560 (2/22/80).



ESTES, PARK COLO