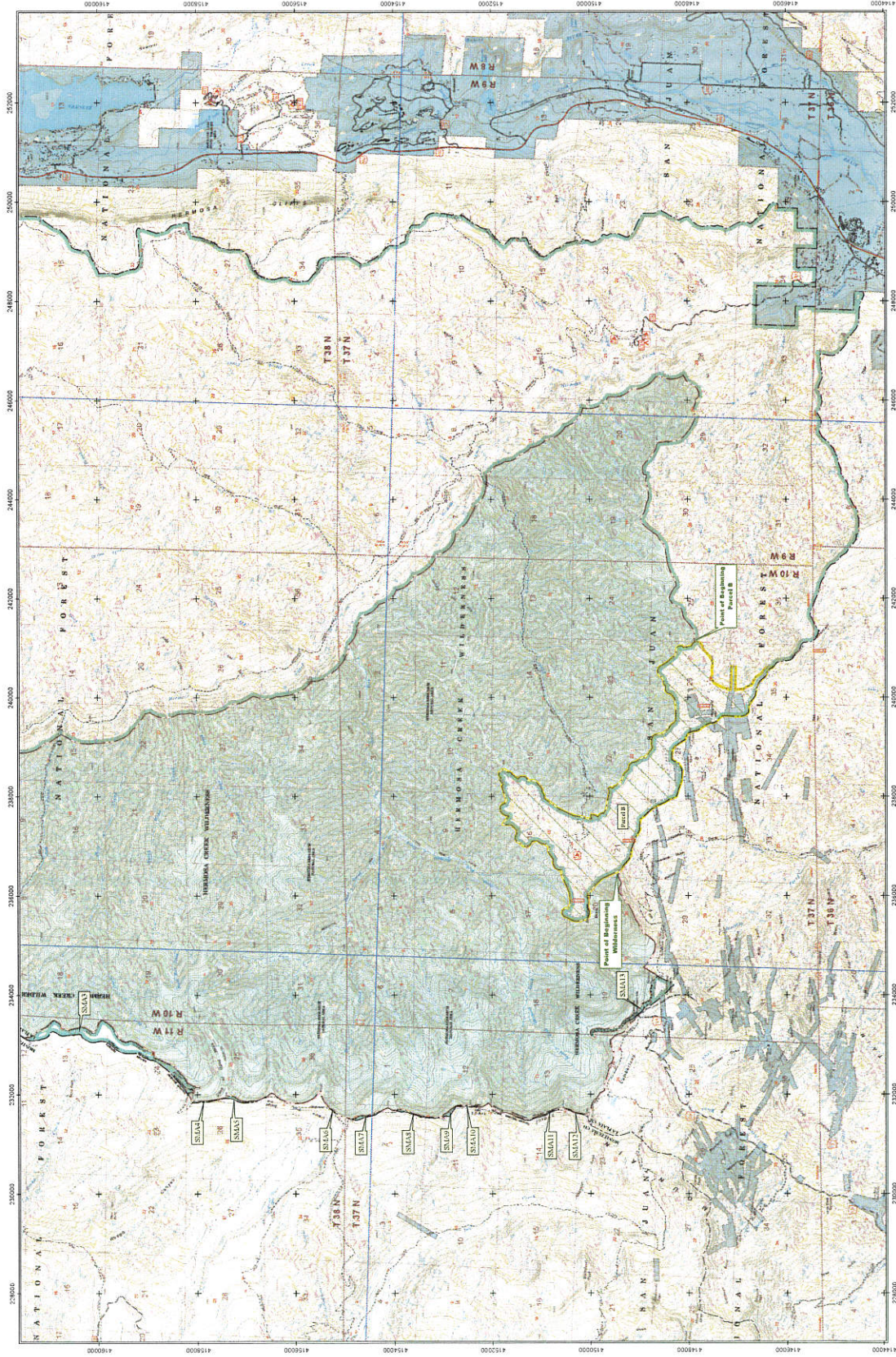


# Hermosa Creek Wilderness & Special Management Area

## San Juan National Forest

### Rocky Mountain Region, Colorado

#### Public Law 113-291 December 19, 2014

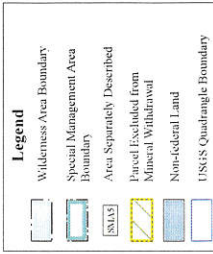


This product is reproduced from geospatial information prepared by the U.S. Department of the Interior, Bureau of Land Management, Geological Survey topographic map products. GIS data and map product accuracy may vary. They may be developed from sources of different scales, based on outdated source data, etc. The Forest Service makes no expressed or implied warranty, including warranty of fitness for a particular purpose, of the accuracy, character, function, or capabilities of the data or their appropriateness for any user's purposes. Using GIS products for purposes other than those intended by the Forest Service may yield inaccurate or misleading results. The Forest Service reserves the right to correct, update, modify, or replace GIS products without notice. For more information, please contact the USDA, Forest Service, Rocky Mountain Region, Lakewood, Colorado 80427-5350.

This map is valid only if accompanied by the narrative Boundary Description.

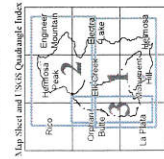


Map Scale 1:37,000



Coordinate grid is Universal Transverse Mercator, Zone 13, North American Datum of 1983, GRS 1980 ellipsoid, units in meters.

Base map contours (40 foot interval) and elevations expressed in North American Vertical Datum of 1929.





# Hermosa Creek Wilderness & Special Management Area

## San Juan National Forest

### Rocky Mountain Region, Colorado

#### Public Law 113-291 December 19, 2014

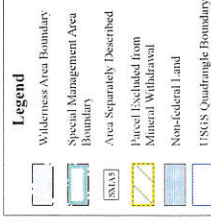


This product is reproduced from a map published by the U.S. Department of the Interior, Bureau of Land Management, Geological Survey topographic map products. GIS data and map product accuracy may vary. The map is not intended for use at scales differing from the original source data, etc. The Forest Service makes no expressed or implied warranty, and assumes no responsibility for the character, function, or capability of the data or their appropriateness for any user's purpose. Using GIS products for purposes other than those intended by the Forest Service may yield inaccurate or misleading results. The Forest Service reserves the right to correct, update, modify, or replace GIS products without notice. For more information, contact the USDA, Forest Service, Rocky Mountain Region, Lakewood, Colorado 80427-5581.

This map is valid only if accompanied by the narrative Boundary Description.

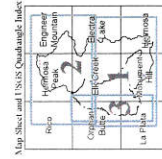


Map Scale 1:37,000



Coordinate grid is Universal Transverse Mercator, Zone 12N, datum of 1983, UTM.

Base map contour (40 foot interval) and elevations expressed in North American Vertical Datum of 1929.



FINAL MAP  
June 18, 2021  
Sheet 2 of 3

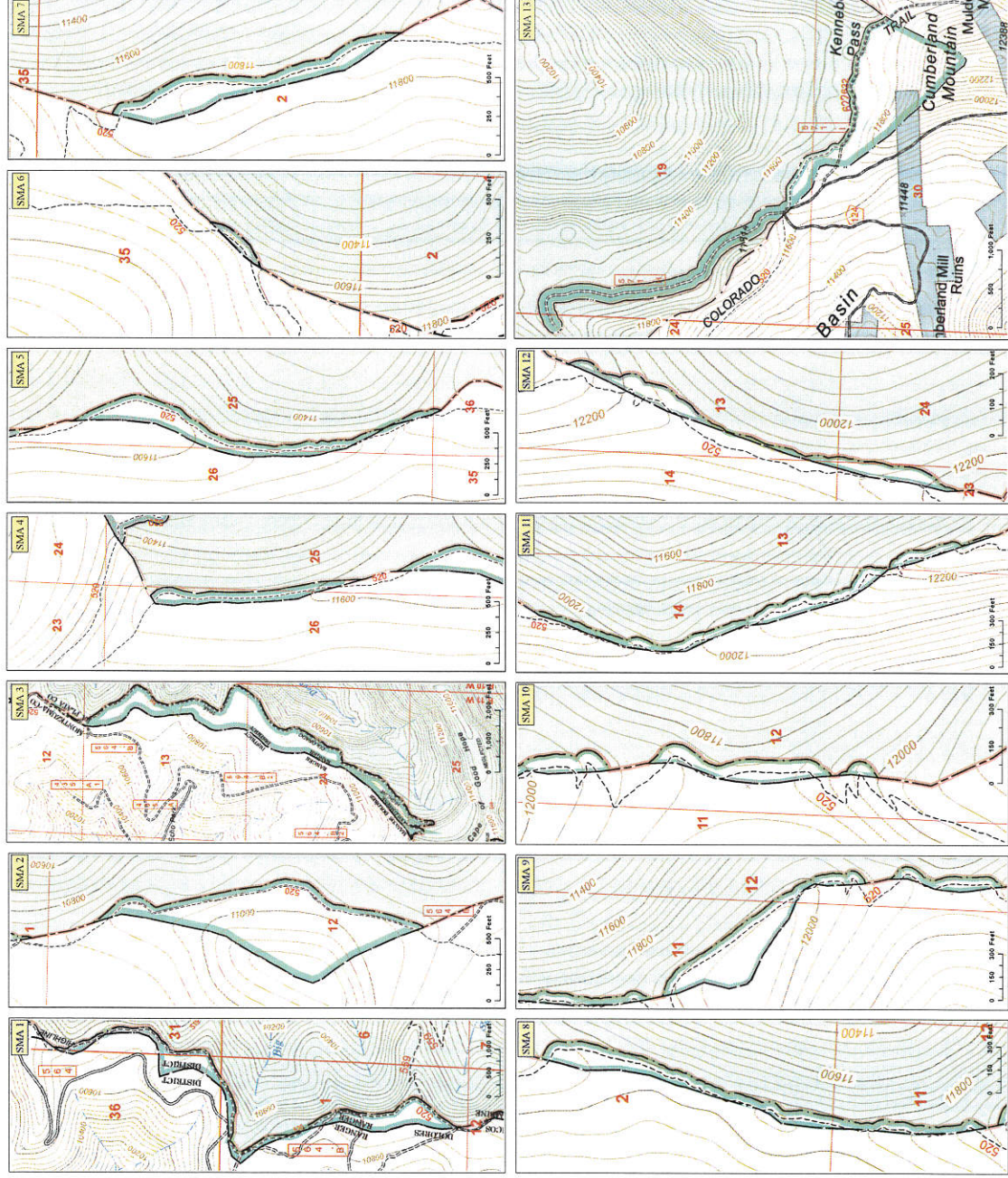
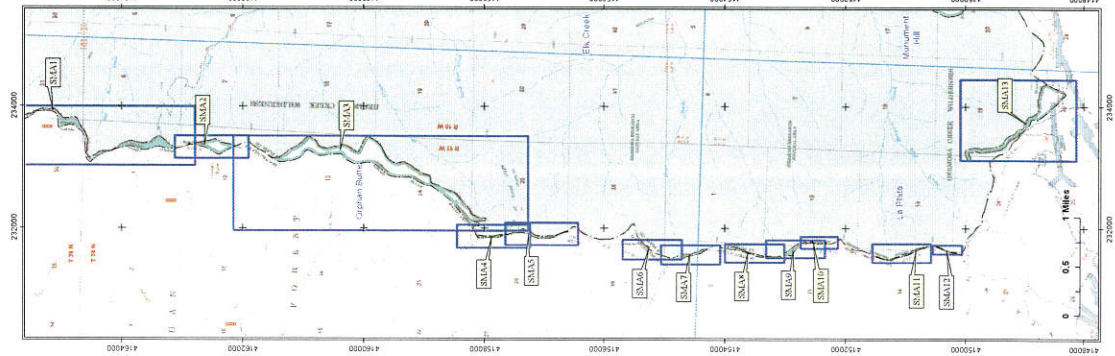


# Hermosa Creek Wilderness & Special Management Area

San Juan National Forest

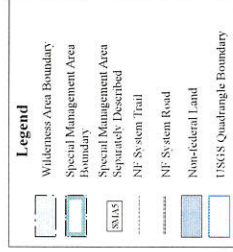
Rocky Mountain Region, Colorado

Public Law 113-291 December 19, 2014

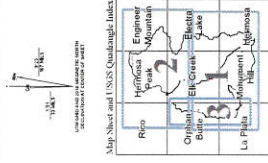


This product is reproduced from geospatial information prepared by the U.S. Department of the Interior, Bureau of Land Management. Geospatial Survey topographic map products, including this map, are not intended to be used for any purpose other than that for which they were created. They may be developed from sources of information that have not been independently verified, and they may contain errors. The Forest Service makes no expressed or implied warranty, including warranty of fitness for a particular purpose, for the data or their appropriateness for any user's purposes. Using GIS products for purposes other than those for which they were created, without modification, may result in incorrect, outdated, modified, or replaced. GIS products without modification for more information, contact the National Forest Management Act, National Forest System, Rocky Mountain Region, Lakewood, Colorado 80327-5350.

This map is valid only if accompanied by the narrative Boundary Description. Scale of each index frame varies.



Coordinate grid is Universal Transverse Mercator, Zone 13, North American Datum of 1983, GRS 1980 ellipsoid, units in meters. Base map contours and elevations are expressed in North American Vertical Datum of 1929.



HERMOSA CREEK WILDERNESS  
& SPECIAL MANAGEMENT AREA  
FINAL MAP  
June 18, 2021  
Sheet 3 of 3