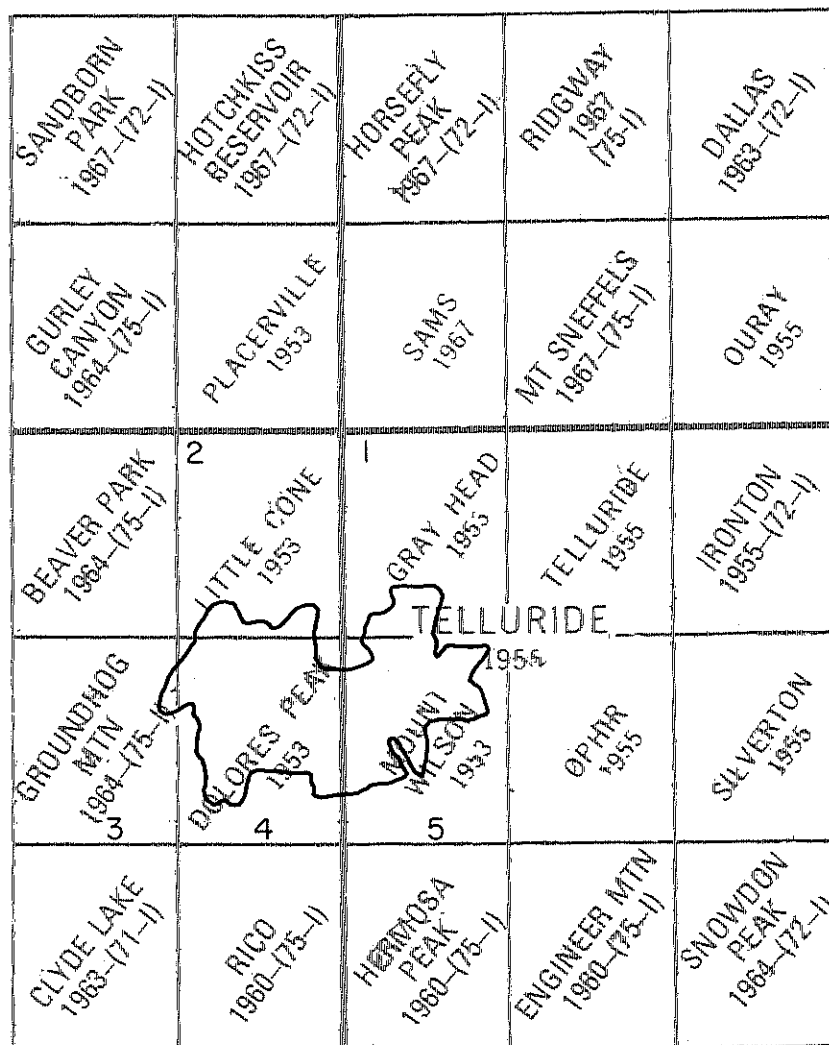
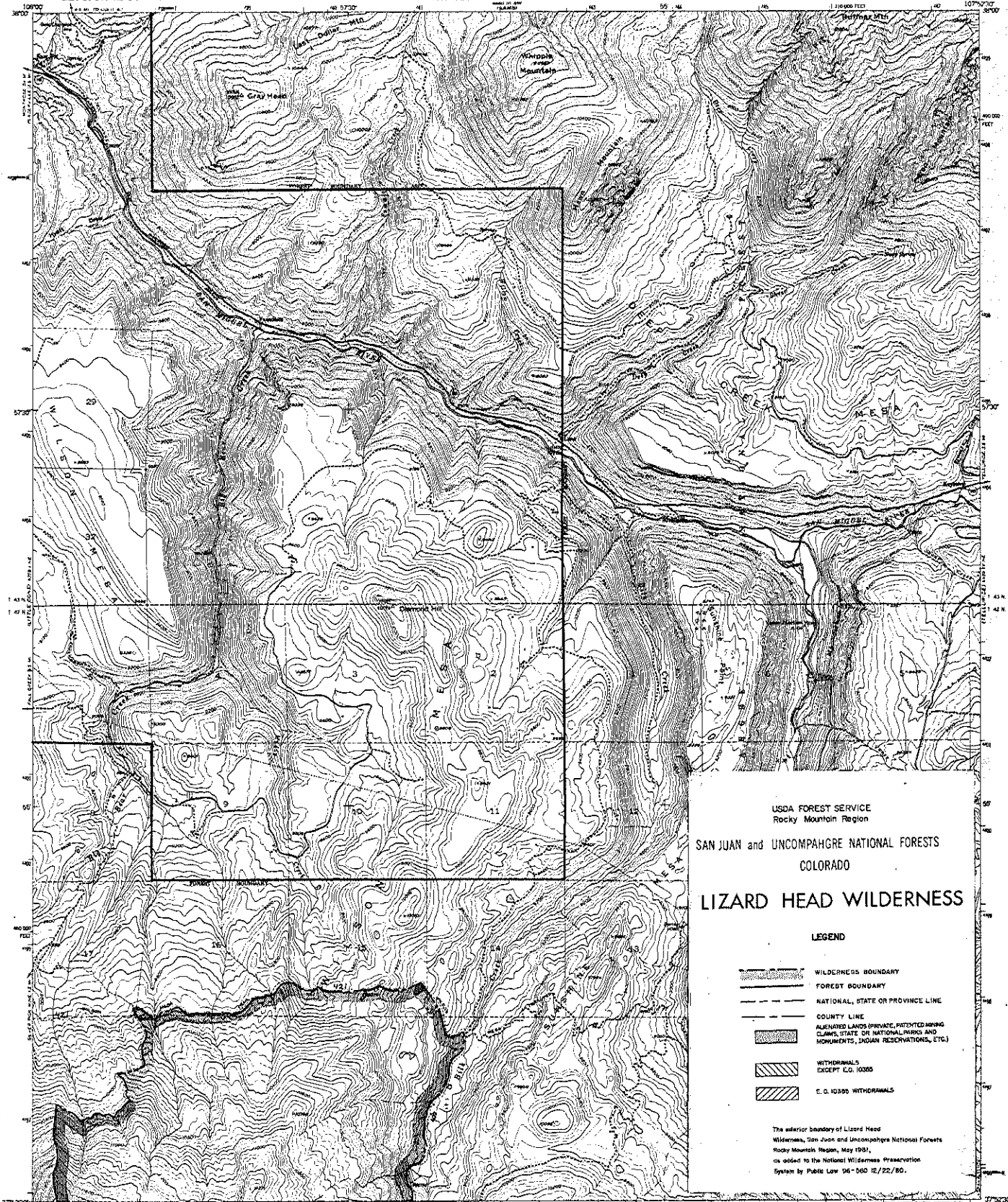


INDEX MAP

LIZARD HEAD WILDERNESS





USDA FOREST SERVICE
Rocky Mountain Region

SAN JUAN and UNCOMPAHGRE NATIONAL FORESTS
COLORADO

LIZARD HEAD WILDERNESS

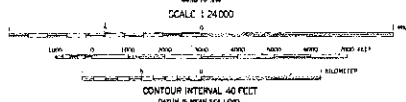
LEGEND

- WILDERNESS BOUNDARY
- FOREST BOUNDARY
- NATIONAL, STATE OR PROVINCE LINE
- COUNTY LINE
- ALIENATED LANDS (PRIVATE, PATENTED, BORING CLAIMS, STATE OR NATIONAL PARKS AND MONUMENTS, INDIAN RESERVATIONS, ETC.)
- WITHDRAWALS EXCEPT E.O. 10335
- E.O. 10335 WITHDRAWALS

The exterior boundary of Lizard Head Wilderness, San Juan and Uncompahgre National Forests, Rocky Mountain Region, May 1981, as added to the National Wilderness Preservation System by Public Law 96-560 (E.O. 12278/80).

Maped, edited, and published by Geological Survey
Control by USGS and USACE
Topographic from aerial photographs by multiple methods
Aerial photographs taken 1952. Field check 1953
Projections: 1927 North American datum
10,000-foot and based on Colorado coordinate system,
north zone
Certain land lines in T. 42N.-R. 9W., T. 42N.-R. 10W.,
T. 42N.-R. 9W., and T. 42N.-R. 10W. are omitted
because of insufficient data
Dashed land lines indicate approximate locations
All mining features shown are inactive
1,000-meter Universal Transverse Mercator and NAD,
zone 13, shown in blue

1:25,000 SCALE

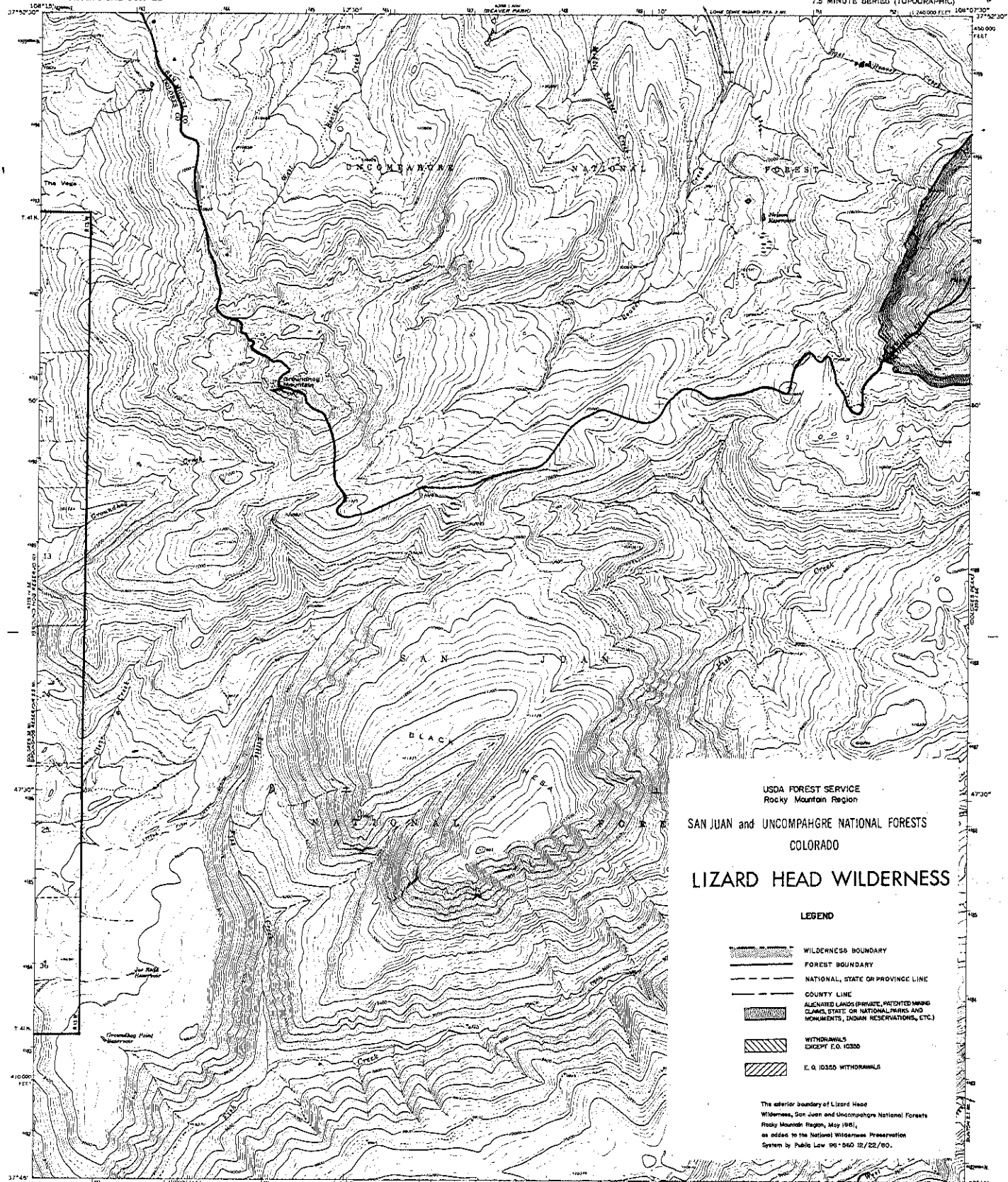


THIS MAP COMPLETES WITH NATIONAL MAP ACCURACY STANDARDS
FOR SALE BY U.S. GEOLOGICAL SURVEY DIVISION COLORADO ROCKY MOUNTAIN REGION, VIRGINIA 22092
A FOLDER DESCRIBING TOPOGRAPHIC MAPS AND SYMBOLS IS AVAILABLE ON REQUEST



ROAD CLASSIFICATION
Main-daily Light-duty
Unimproved dirt
State Route

GRAY HEAD, COLO.
N754 TELLURIDE 6 QUADRANGLE
N752 6-W10752 5/7 5
1953



USDA FOREST SERVICE
Rocky Mountain Region
SAN JUAN and UNCOMPAHGRE NATIONAL FORESTS
COLORADO
LIZARD HEAD WILDERNESS

LEGEND

- WILDERNESS BOUNDARY
- FOREST BOUNDARY
- NATIONAL, STATE OR PROVINCE LINE
- COUNTY LINE
- ALIENATED LANDS (PRIVATE, PATENTED MINING CLAIMS, STATE OR NATIONAL PARKS AND MONUMENTS, INDIAN RESERVATIONS, ETC.)
- WITHDRAWALS EXCEPT E.O. 10330
- E.O. 10330 WITHDRAWALS

The exterior boundary of Lizard Head Wilderness, San Juan and Uncompahgre National Forests, Rocky Mountain Region, May 1981, as added to the National Wilderness Preservation System by Public Law 96-560 12/22/80.

Mapped, edited, and published by the Geological Survey
Control by USGS and UNCGS
Topography by photogrammetric methods from aerial photographs taken 1953. Field checked 1964.
Polyconic projection, 1927 North American datum, 10,000 foot grid based on Colorado coordinate system, south zone.
1:24,000-meter Universal Transverse Mercator grid ticks, zone 12, shown in blue.
Certain land tracts are omitted because of insufficient data.

SCALE 1:24,000
CONTOUR INTERVAL 40 FEET
DATUM IS MEAN SEA LEVEL

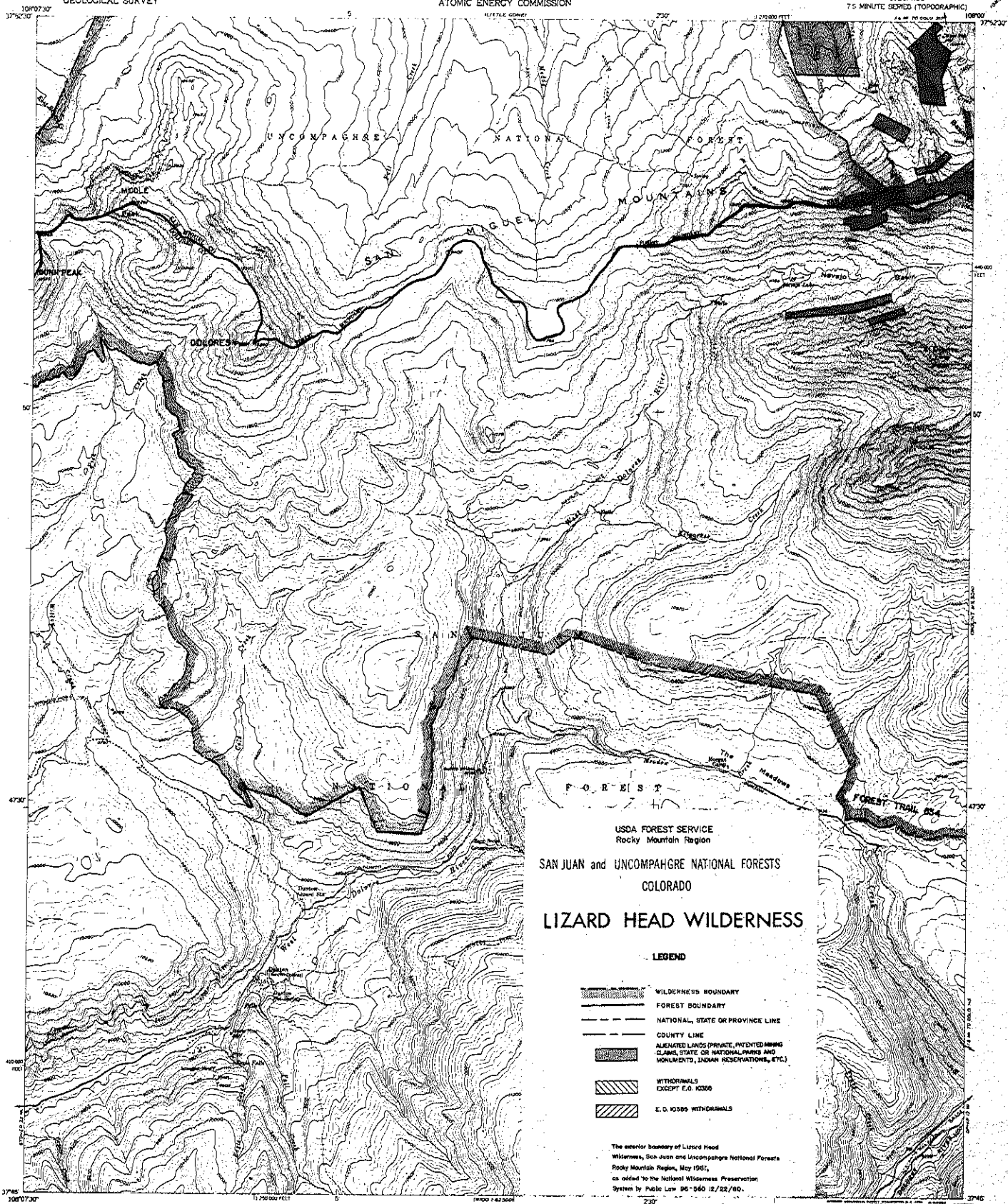
ROAD CLASSIFICATION
Light duty Unimproved dirt



NOTE

This map is given to you by the Geological Survey and is not to be used for any other purpose without the written consent of the Director of the Geological Survey. It is the property of the Geological Survey and is loaned to you for your use only. It is not to be reproduced, stored in a retrieval system, or transmitted in any form or by any means, electronic, mechanical, photocopying, recording, or by any information storage and retrieval system, without the written permission of the Director of the Geological Survey.

GROUNDHOG MOUNTAIN, COLO.
13745-110807.5/7.5
1964



Maped, edited, and published by the Geological Survey
Control by USGS and USGS

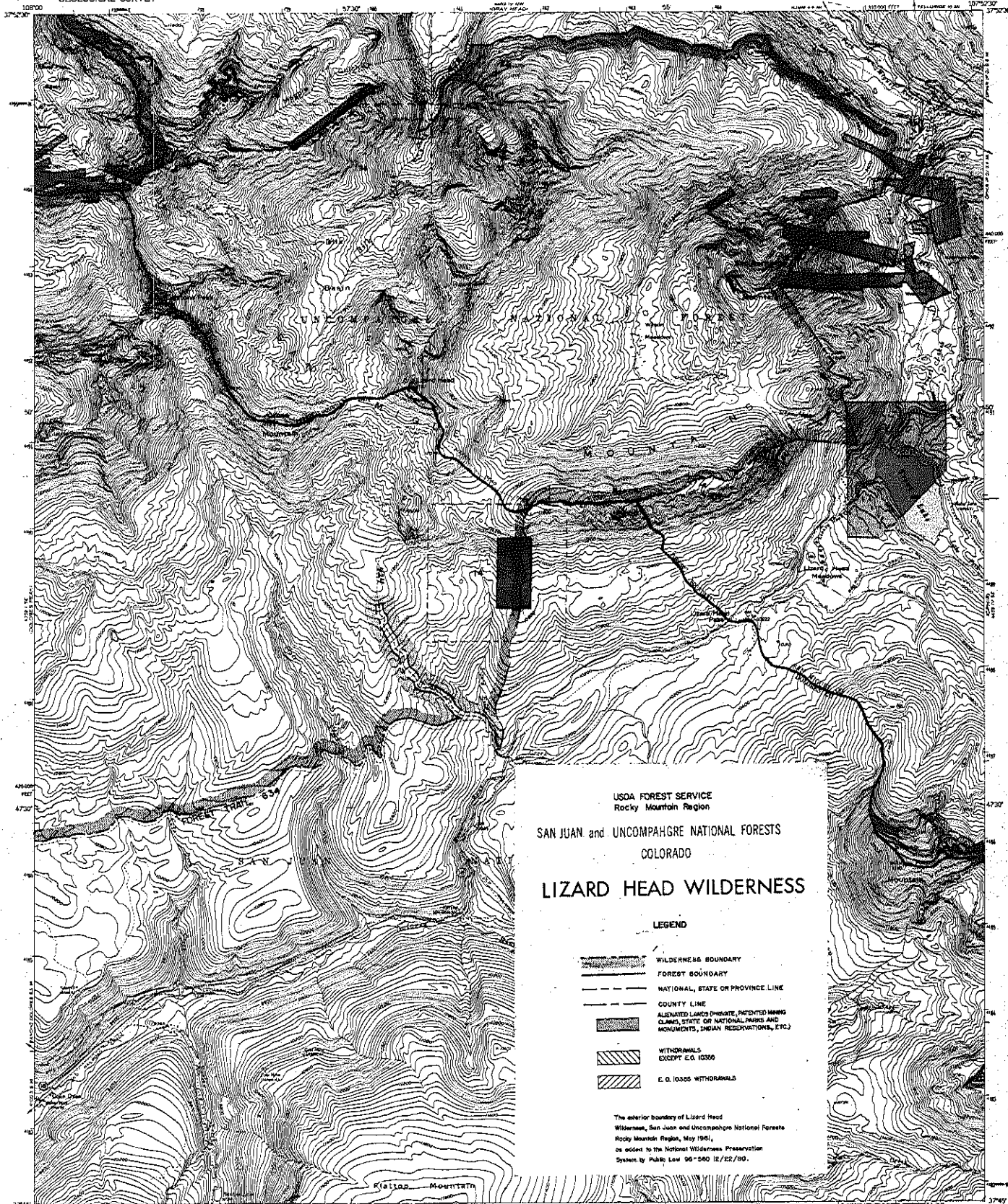
Topographic from aerial photographs by multiple methods
Aerial photographs taken 1950, 1951, 1952, 1953, 1954

Photocopy projection: 1957 North American datum
10,000-foot grid based on Colorado coordinate system,
south zone

Land from omitted because of insufficient data. All recovered
owners are shown

All mining features are inactive





Maped, edited, and published by the Geological Survey with cooperation by the Atomic Energy Commission Control by USGS and USOAGS

Topography from aerial photographs by multiple methods Aerial photographs taken 1952 Field check 1953

Photocopy projection 1927 North American datum 10,000-foot grid based on Colorado coordinate system, south zone 1000-meter Universal Transverse Mercator grid lines, zone 13, shown in blue

Land lines are omitted in T. 41 N., T. 42 N., and T. 43 N. R. 9 W. and R. 10 W. because of insufficient data. All recorded claims are shown.

All mining features on this map are inactive unless otherwise indicated.



THIS MAP COMPLETES WITH NATIONAL MAP ACCURACY STANDARDS
FOR SALE BY U.S. GEOLOGICAL SURVEY, CENTER, COLORADO ROAD, ON WASHINGTON, D.C. 20242
A FOLDER DESCRIBING TOPOGRAPHIC MAPS AND SYMBOLS IS AVAILABLE ON REQUEST