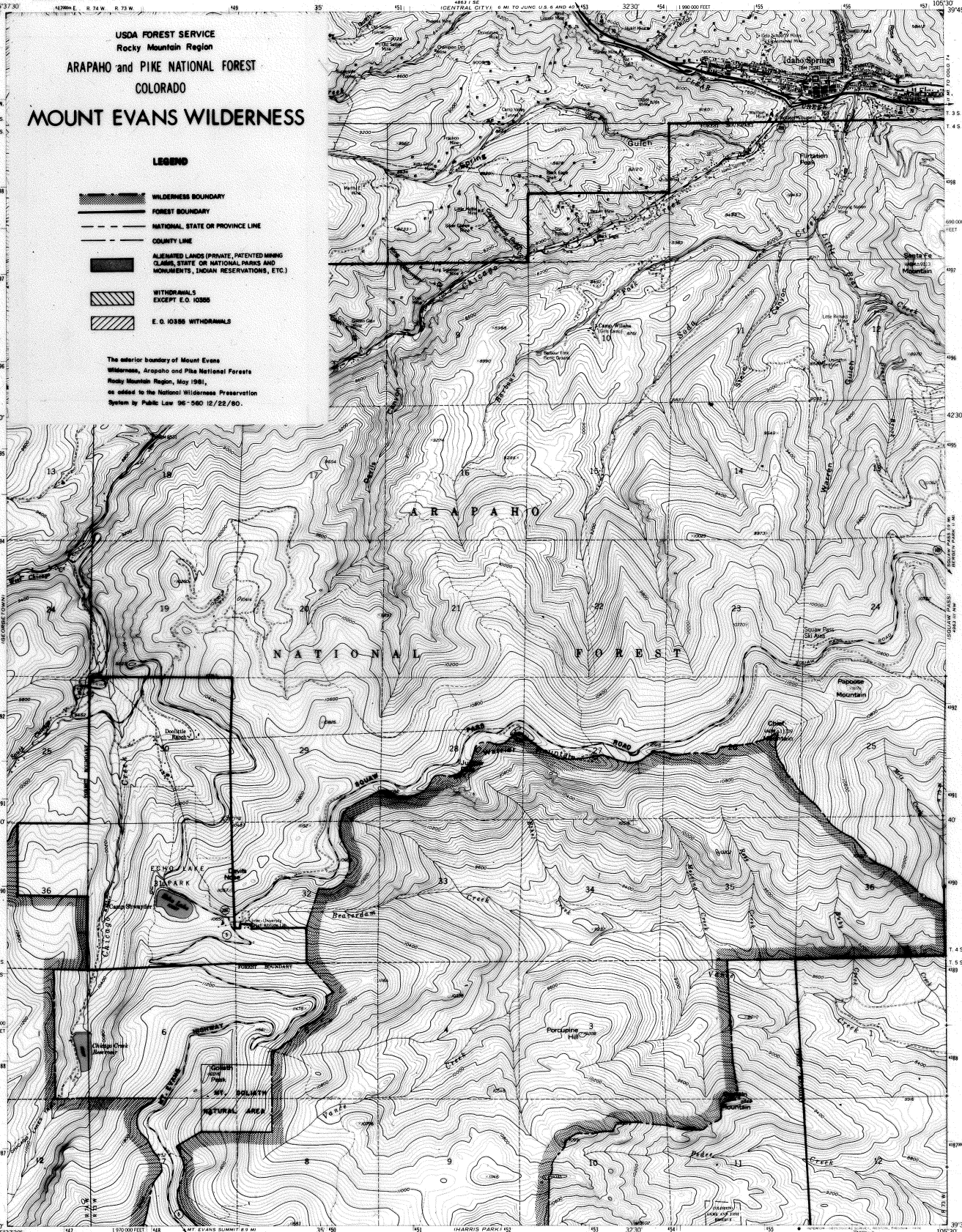


USDA FOREST SERVICE
Rocky Mountain Region
ARAPAHO and PIKE NATIONAL FOREST
COLORADO
MOUNT EVANS WILDERNESS

LEGEND

- WILDERNESS BOUNDARY
- FOREST BOUNDARY
- NATIONAL STATE OR PROVINCE LINE
- COUNTY LINE
- ALIENATED LANDS (PRIVATE, PATENTED MINING CLAIMS, STATE OR NATIONAL PARKS AND MONUMENTS, INDIAN RESERVATIONS, ETC.)
- WITHDRAWALS EXCEPT E.O. 10386
- E.O. 10386 WITHDRAWALS

The interior boundary of Mount Evans Wilderness, Arapaho and Pike National Forests Rocky Mountain Region, May 1981, as added to the National Wilderness Preservation System by Public Law 96-580 12/22/80.



Maped, edited, and published by the Geological Survey as part of the Department of the Interior program for the development of the Missouri River Basin Control by USGS and NGS/NOAA
Topography from aerial photographs by photogrammetric methods
Aerial photographs taken 1951 and 1953. Field check 1957
Polyconic projection. 1927 North American datum
10,000-foot grid based on Colorado coordinate system, central zone
1000 metre Universal Transverse Mercator grid ticks, zone 13, shown in blue
Dashed land lines indicate approximate locations
Land lines unsurveyed in T. 35. R. 73W.
Land lines omitted in T. 55. R. 74W. because of insufficient data

Revisions shown in purple compiled from aerial photographs taken 1974. This information not field checked

THIS MAP COMPLIES WITH NATIONAL MAP ACCURACY STANDARDS
FOR SALE BY U.S. GEOLOGICAL SURVEY DENVER, COLORADO 80226 OR RESTON, VIRGINIA 22092
A FOLDER DESCRIBING TOPOGRAPHIC MAPS AND SYMBOLS IS AVAILABLE ON REQUEST

ROAD CLASSIFICATION
Primary highway, hard surface
Secondary highway, hard surface
Unimproved road
Light-duty road, hard or improved surface
Interstate Route
U.S. Route
State Route

IDAHO SPRINGS, COLO.
NE 1/4 GEORGETOWN 6 QUADRANGLE
N2937 5-W-10380/7.5

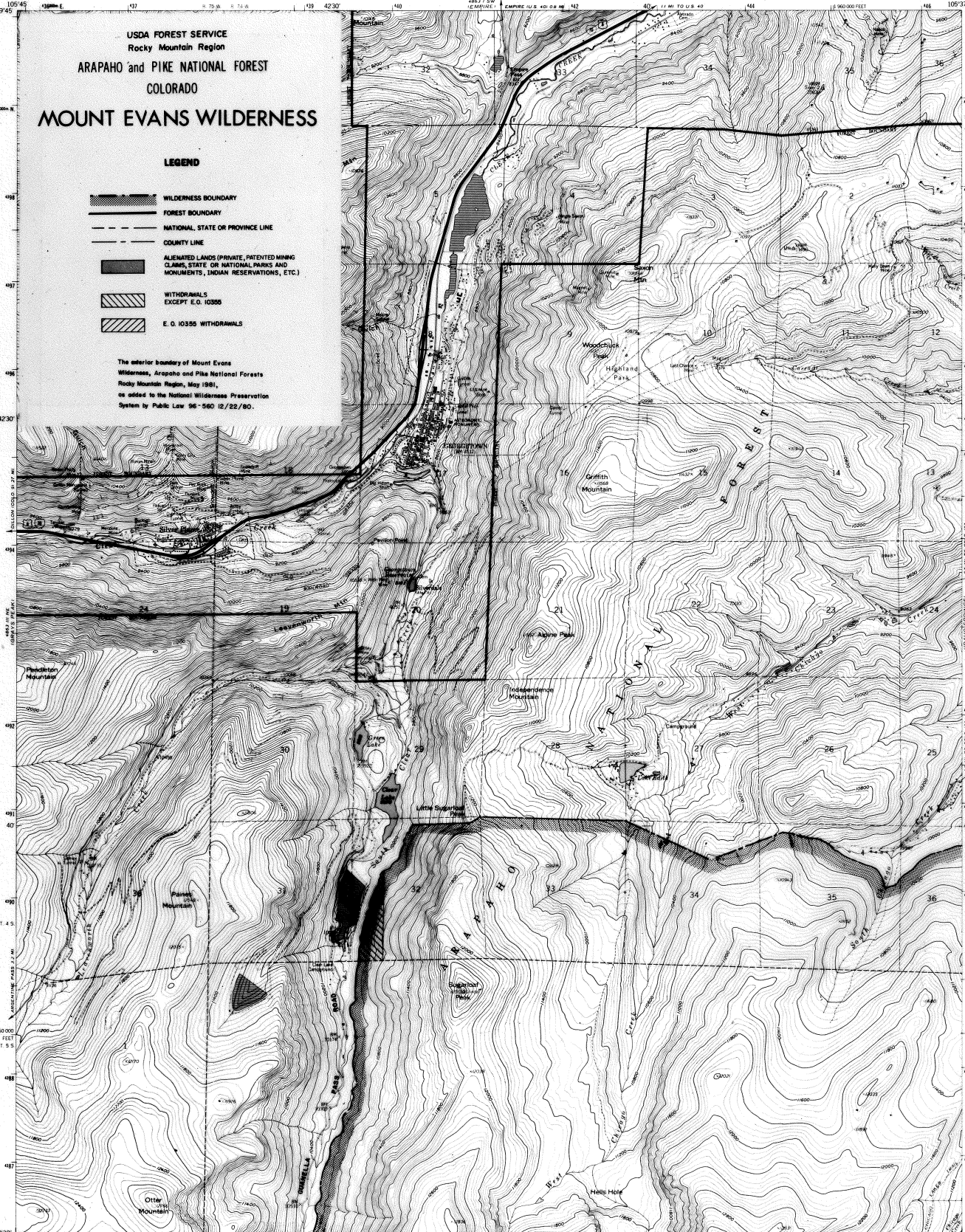
1957
PHOTOGRAPHED 1974
AMS 4865 II NE-SERIES 1987

USDA FOREST SERVICE
Rocky Mountain Region
ARAPAHO and PIKE NATIONAL FOREST
COLORADO
MOUNT EVANS WILDERNESS

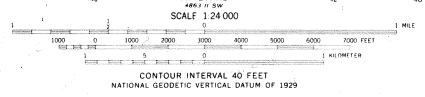
LEGEND

- WILDERNESS BOUNDARY
- FOREST BOUNDARY
- NATIONAL STATE OR PROVINCE LINE
- COUNTY LINE
- ALIENATED LANDS (PRIVATE, PATENTED MINING CLAIMS, STATE OR NATIONAL PARKS AND MONUMENTS, INDIAN RESERVATIONS, ETC.)
- WITHDRAWALS EXCEPT E.O. 10355
- E.O. 10355 WITHDRAWALS

The exterior boundary of Mount Evans Wilderness, Arapaho and Pike National Forests, Rocky Mountain Region, May 1981, as added to the National Wilderness Preservation System by Public Law 96-560 12/22/80.



Mapped, edited, and published by the Geological Survey as part of the Department of the Interior program for the development of the Missouri River Basin. Control by USGS and NGS/NOAA. Topography from aerial photographs by photogrammetric methods. Aerial photographs taken 1953. Field check 1957. Polyconic projection. 1927 North American datum. 10,000-foot grid based on Colorado coordinate system, central zone. 1000-meter Universal Transverse Mercator grid ticks, zone 13, shown in blue. Dashed land lines indicate approximate locations. Land lines surveyed in T. 35, R. 75 W. and in parts of T. 35, R. 74 W. and T. 45, R. 75 W. Land lines omitted in T. 55, R. 74 and 75 W. because of insufficient data. Revisions shown in purple and recombination of woodland areas compiled from aerial photographs taken 1974. This information not field checked.



- ROAD CLASSIFICATION**
- Primary highway, hard surface
 - Secondary highway, hard surface
 - Light-duty road, hard or improved surface
 - Unimproved road
 - Interstate Route
 - U.S. Route
 - State Route

THIS MAP COMPLIES WITH NATIONAL MAP ACCURACY STANDARDS FOR SALE BY U.S. GEOLOGICAL SURVEY DENVER, COLORADO 80225 OR RESTON, VIRGINIA 22092. A FOLDER DESCRIBING TOPOGRAPHIC MAPS AND SYMBOLS IS AVAILABLE ON REQUEST.

USDA FOREST SERVICE
Rocky Mountain Region
ARAPAHO and PIKE NATIONAL FOREST
COLORADO
MOUNT EVANS WILDERNESS

LEGEND

- WILDERNESS BOUNDARY
- FOREST BOUNDARY
- NATIONAL, STATE OR PROVINCE LINE
- COUNTY LINE
- ALIENATED LANDS (PRIVATE, PATENTED MINING CLAIMS, STATE OR NATIONAL PARKS AND MONUMENTS, INDIAN RESERVATIONS, ETC.)
- WITHDRAWALS EXCEPT E.O. 10355
- E.O. 10355 WITHDRAWALS

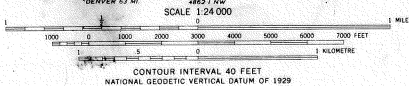
The exterior boundary of Mount Evans Wilderness, Arapaho and Pike National Forests, Rocky Mountain Region, May 1981, as added to the National Wilderness Preservation System by Public Law 96-560 12/22/80.

Mapped, edited, and published by the Geological Survey as part of the Department of the Interior program for the development of the Missouri River Basin.

Control by USGS and NDS/NOAA
Topography from aerial photographs by photogrammetric methods
Aerial photographs taken 1953. Field check 1957
Polyconic projection. 1927 North American datum.
10,000-foot grid based on Colorado coordinate system, central zone.
1000-metre Universal Transverse Mercator grid ticks, zone 13, shown in blue.

Dashed land lines indicate approximate locations.
Land lines omitted in T.5S. R.74W. and in parts of T.5S. R.75W. T.6S. R.74 and 75W. because of insufficient data.

Revisions shown in purple and recombination of woodland areas compiled from aerial photographs taken 1974. This information not field checked.

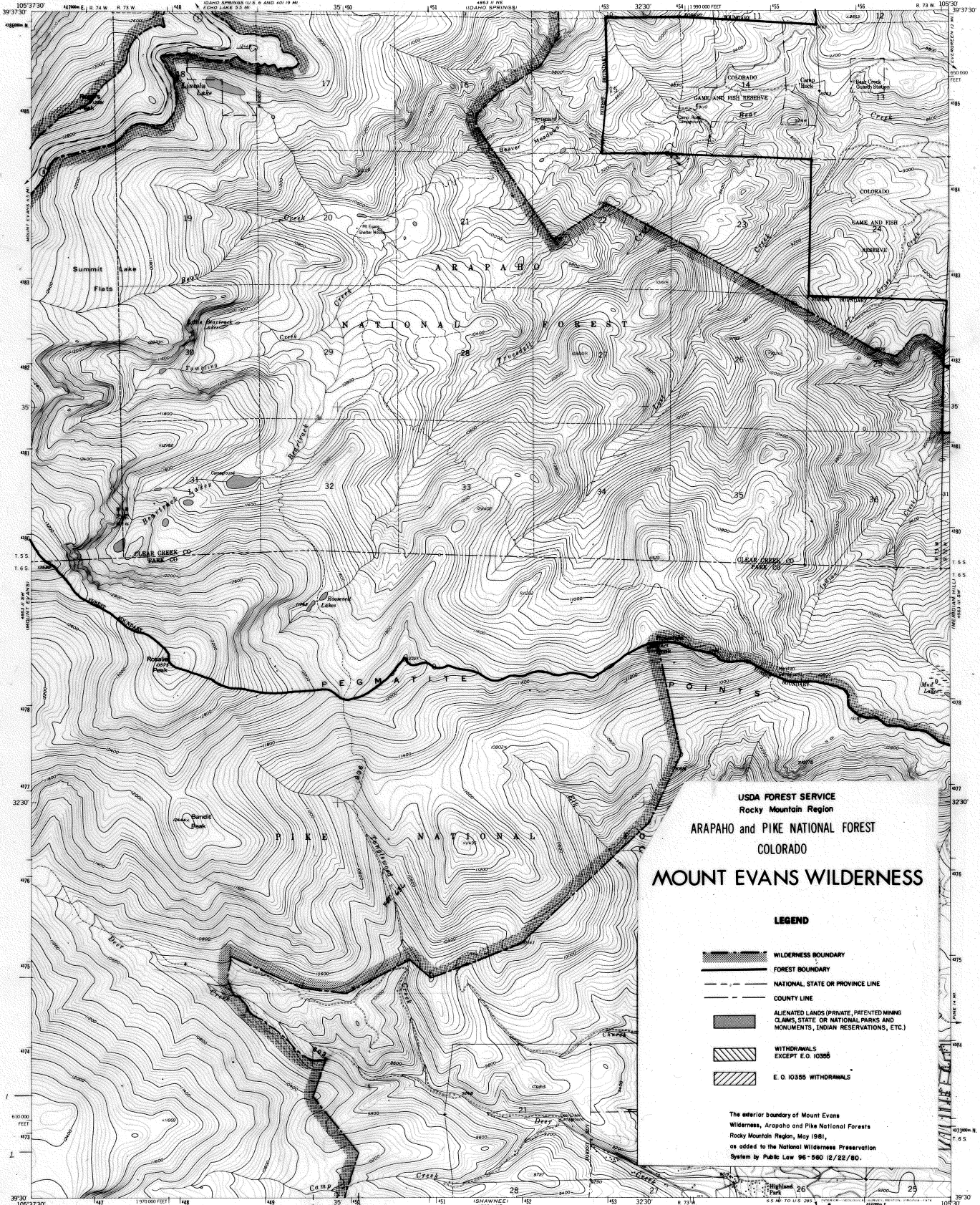


THIS MAP COMPLIES WITH NATIONAL MAP ACCURACY STANDARDS
FOR SALE BY U.S. GEOLOGICAL SURVEY, DENVER, COLORADO 80225, OR RESTON, VIRGINIA 22092
A FOLDER DESCRIBING TOPOGRAPHIC MAPS AND SYMBOLS IS AVAILABLE ON REQUEST

ROAD CLASSIFICATION
Primary highway hard surface ——— Light duty road, hard or improved surface
Secondary highway hard surface ——— Unimproved road
○ Interstate Route ○ U.S. Route ○ State Route

MT EVANS, COLO.
SW 1/4 GEORGETOWN 10' QUADRANGLE
N3930-W10537 7/75

1957
PHOTOREVISED 1974
AND AREA II SW, 15TH ED. V877



Maped, edited, and published by the Geological Survey as part of the Department of the Interior program for the development of the Missouri River Basin Control by USGS and NWS/NOAA

Topography from aerial photographs by photogrammetric methods
Aerial photographs taken 1953. Field check 1957
Polyconic projection 1927 North American datum
10,000 foot grid based on Colorado coordinate system
1000 metre Universal Transverse Mercator grid ticks, zone 13, shown in blue

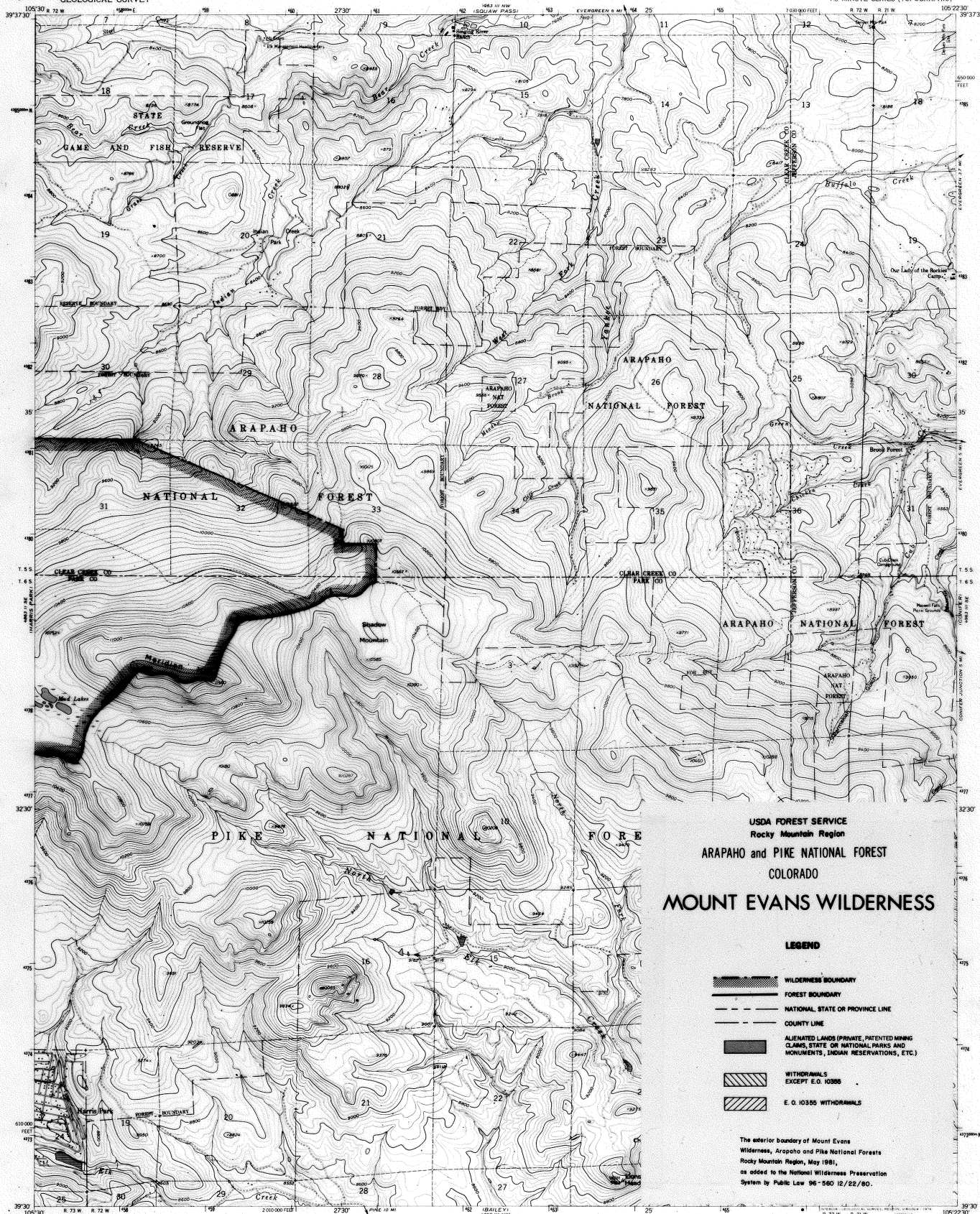
Dashed land lines indicate approximate locations
Land lines omitted in T. 5 S and G. 5. R. 74 W. and in part of T. 6 S. R. 73 W. because of insufficient data
Revisions shown in purple compiled from aerial photographs taken 1974. This information not field checked

UTM GRID AND 1974 MAGNETIC NORTH
DECLINATION AT CENTER OF SHEET

SCALE 1:24,000
1 2 3 4 5 6 7 8 9 10 11 12 13 14 15 16 17 18 19 20 21 22 23 24 25 26 27 28 29 30 31 32 33 34 35 36 37 38 39 40 41 42 43 44 45 46 47 48 49 50 51 52 53 54 55 56 57 58 59 60 61 62 63 64 65 66 67 68 69 70 71 72 73 74 75 76 77 78 79 80 81 82 83 84 85 86 87 88 89 90 91 92 93 94 95 96 97 98 99 100
CONTOUR INTERVAL 40 FEET
NATIONAL GEODETIC VERTICAL DATUM OF 1929

THIS MAP COMPLIES WITH NATIONAL MAP ACCURACY STANDARDS
FOR SALE BY U.S. GEOLOGICAL SURVEY, DENVER, COLORADO 80225, OR RESTON, VIRGINIA 22092
A FOLDER DESCRIBING TOPOGRAPHIC MAPS AND SYMBOLS IS AVAILABLE ON REQUEST

QUADRANGLE LOCATION



USDA FOREST SERVICE
Rocky Mountain Region
ARAPAHO and PIKE NATIONAL FOREST
COLORADO
MOUNT EVANS WILDERNESS

LEGEND

- WILDERNESS BOUNDARY
- FOREST BOUNDARY
- NATIONAL STATE OR PROVINCE LINE
- COUNTY LINE
- ALIENATED LANDS (PRIVATE, PATENTED MINING CLAIMS, STATE OR NATIONAL PARKS AND MONUMENTS, INDIAN RESERVATIONS, ETC.)
- WITHDRAWALS EXCEPT E.O. 10396
- E.O. 10396 WITHDRAWALS

The exterior boundary of Mount Evans Wilderness, Arapaho and Pike National Forests, Rocky Mountain Region, May 1981, as added to the National Wilderness Preservation System by Public Law 96-580 12/22/80.

- ROAD CLASSIFICATION**
- Primary highway, hard surface
 - Light duty road, hard or improved surface
 - Secondary highway, hard surface
 - Unimproved road
 - Interstate Route
 - U.S. Route
 - State Route



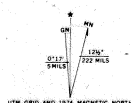
MERIDIAN HILL, COLO.
N3930-W10522.5/7.5

1957

AMS 4953 III SW-SERIES V877

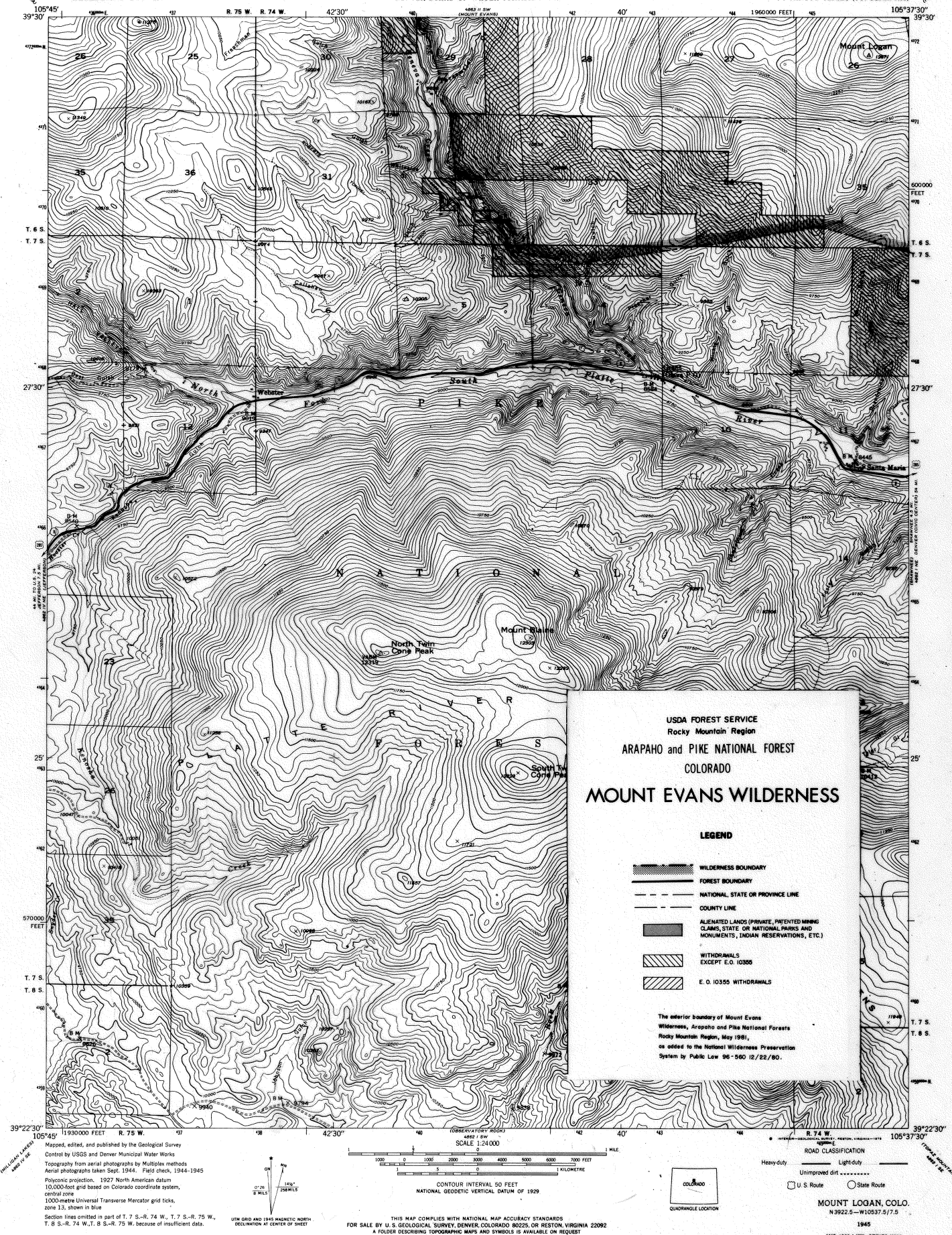
SHEET 5 OF 7

Maped, edited, and published by the Geological Survey as part of the Department of the Interior program for the development of the Missouri River Basin. Control by USGS and NGS/NOAA. Topography from aerial photographs by photogrammetric methods. Aerial photographs taken 1953. Field check 1957. Polyconic projection 1927 North American datum 10,000-foot grid based on Colorado coordinate system, central zone. 1000 metre Universal Transverse Mercator grid ticks, zone 13, shown in blue. Dashed lines indicate approximate locations. Certain land lines omitted in T. 6 S., R. 72 and 73 W. because of insufficient data.



SCALE 1:24,000
1000 2000 3000 4000 5000 6000 7000 8000 9000 10000 FEET
1 MILE
CONTOUR INTERVAL 40 FEET
NATIONAL GEODETIC VERTICAL DATUM OF 1929

THIS MAP COMPLIES WITH NATIONAL MAP ACCURACY STANDARDS FOR SALE BY U.S. GEOLOGICAL SURVEY, DENVER, COLORADO 80225, OR RESTON, VIRGINIA 22092. A FOLDER DESCRIBING TOPOGRAPHIC MAPS AND SYMBOLS IS AVAILABLE ON REQUEST.



USDA FOREST SERVICE
Rocky Mountain Region
ARAPAHO and PINE NATIONAL FOREST
COLORADO
MOUNT EVANS WILDERNESS

LEGEND

- WILDERNESS BOUNDARY
- FOREST BOUNDARY
- NATIONAL, STATE OR PROVINCE LINE
- COUNTY LINE
- ALLOCATED LANDS (PRIVATE, PATENTED MINING CLAIMS, STATE OR NATIONAL PARKS AND MONUMENTS, INDIAN RESERVATIONS, ETC.)
- WITHDRAWALS EXCEPT E.O. 10585
- E.O. 10585 WITHDRAWALS

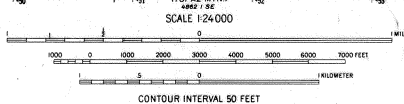
The exterior boundary of Mount Evans Wilderness, Arapaho and Pine National Forests, Rocky Mountain Region, May 1981, as added to the National Wilderness Preservation System by Public Law 96-580 12/22/80.

Mapped by the Geological Survey
1945

ROAD CLASSIFICATION

- Heavy-duty
- Light-duty
- Medium-duty
- Unimproved dirt
- U.S. Route
- State Route

UTM GRID AND 1983 MAGNETIC NORTH
DECLINATION AT CENTER OF SHEET



CONTOUR INTERVAL 50 FEET
DATUM IS MEAN SEA LEVEL

THIS MAP COMPLIES WITH NATIONAL MAP ACCURACY STANDARDS
FOR SALE BY U.S. GEOLOGICAL SURVEY, DENVER, COLORADO 80225, OR WASHINGTON, D.C. 20242
A FOLDER DESCRIBING TOPOGRAPHIC MAPS AND SYMBOLS IS AVAILABLE ON REQUEST

SHAWNEE, COLO.
N 3922 5 - W 10530 7.5

1945

AMS 4862 I NE-SERIES 887