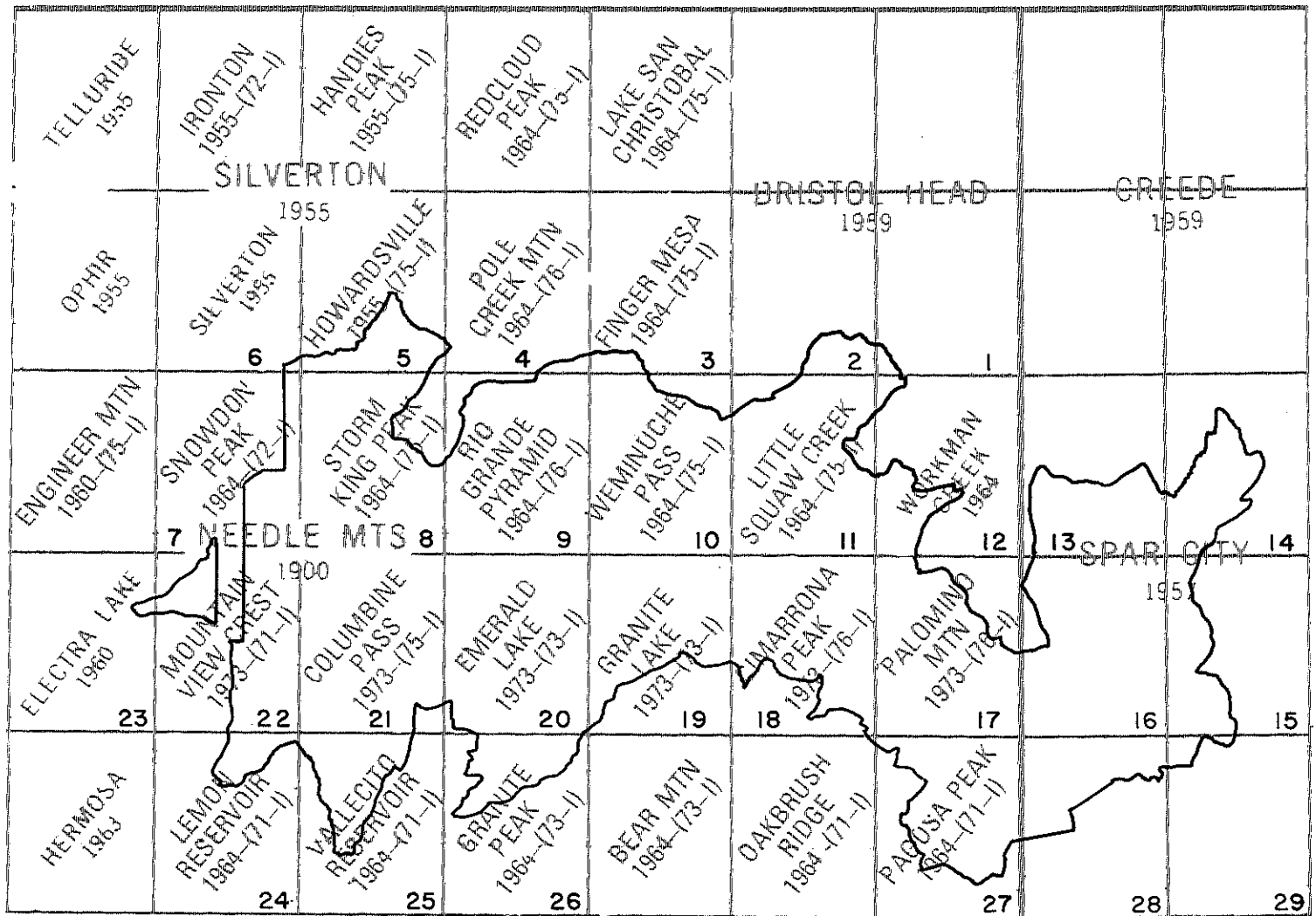


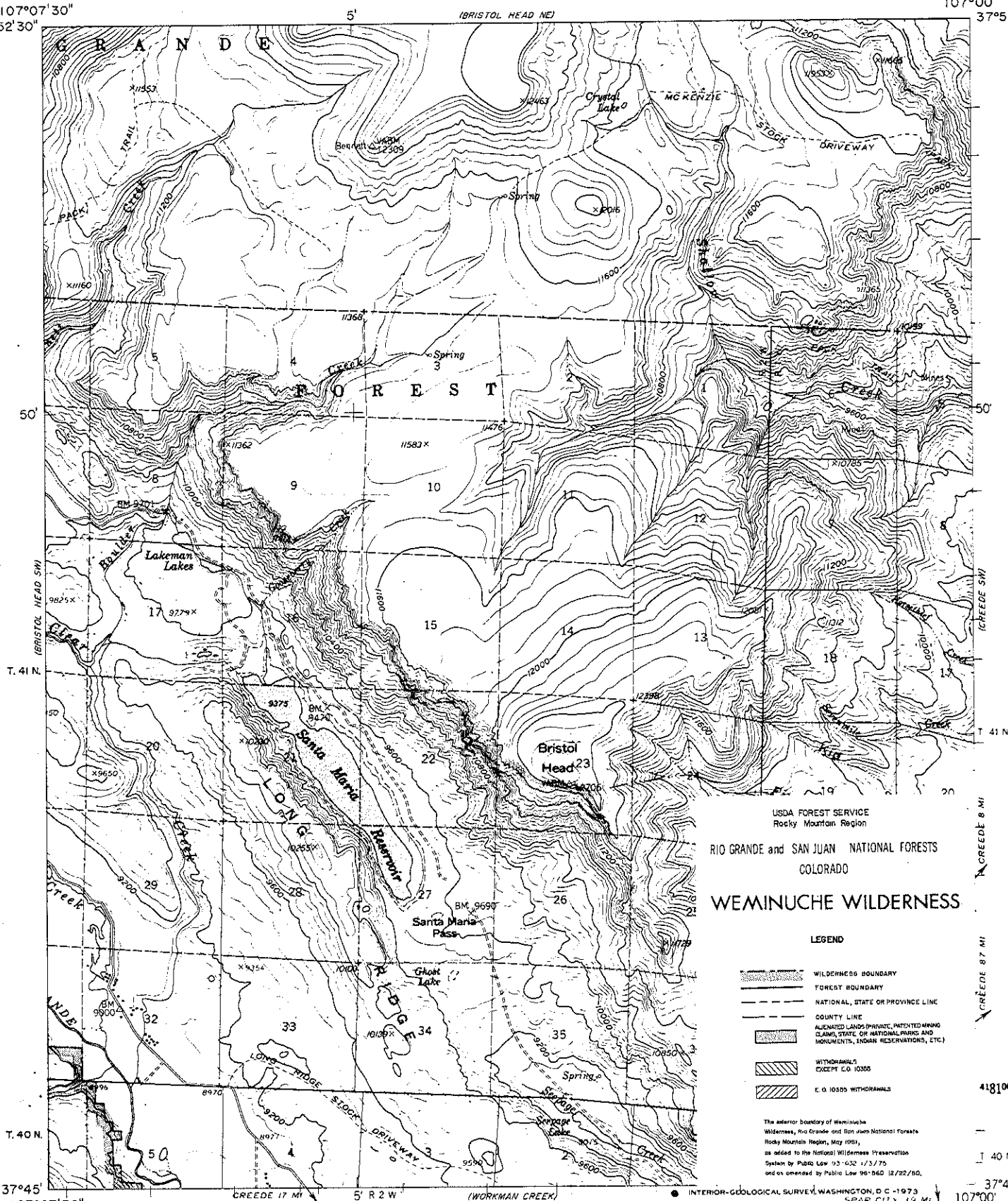
# INDEX MAP

## WEMINUCHE WILDERNESS

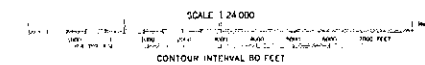


107°07'30"  
37°52'30"

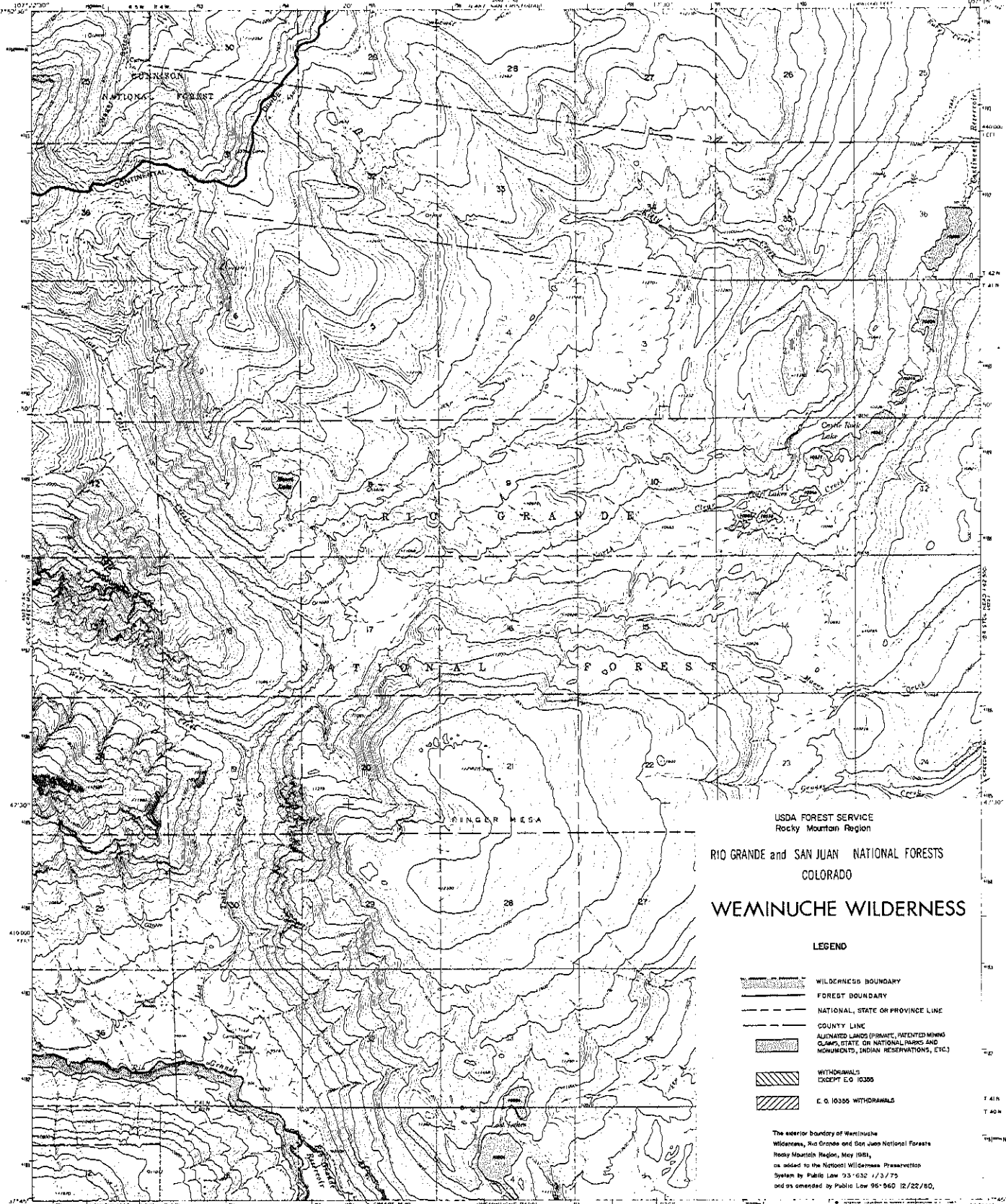
107°00'  
37°52'30"



BRISTOL HEAD SE, COLO.  
1959



2 OF 29



USDA FOREST SERVICE  
Rocky Mountain Region

RIO GRANDE and SAN JUAN NATIONAL FORESTS  
COLORADO

WEMINUCHE WILDERNESS

LEGEND

- WILDERNESS BOUNDARY
- FOREST BOUNDARY
- NATIONAL, STATE OR PROVINCE LINE
- COUNTY LINE
- ALIENATED LANDS (PRIVATE, PATENTED MINING CLAIMS, STATE OR NATIONAL PARKS AND MONUMENTS, INDIAN RESERVATIONS, ETC.)
- WITHDRAWALS EXCEPT E.O. 10335
- E.O. 10335 WITHDRAWALS

The exterior boundary of Weminuche Wilderness, Rio Grande and San Juan National Forests, Rocky Mountain Region, May 1981, as added to the National Wilderness Preservation System by Public Law 96-632 11/3/75 and as amended by Public Law 96-560 12/22/80.

ROAD CLASSIFICATION  
Light duty  
Unimproved dirt



FINGER MESA, COLO.  
N 37° 45' - 49° 15' W 107° 15' - 108° 15'

NOTE

UNITED STATES  
DEPARTMENT OF THE INTERIOR  
GEOLOGICAL SURVEY

USDA FOREST SERVICE  
Rocky Mountain Region

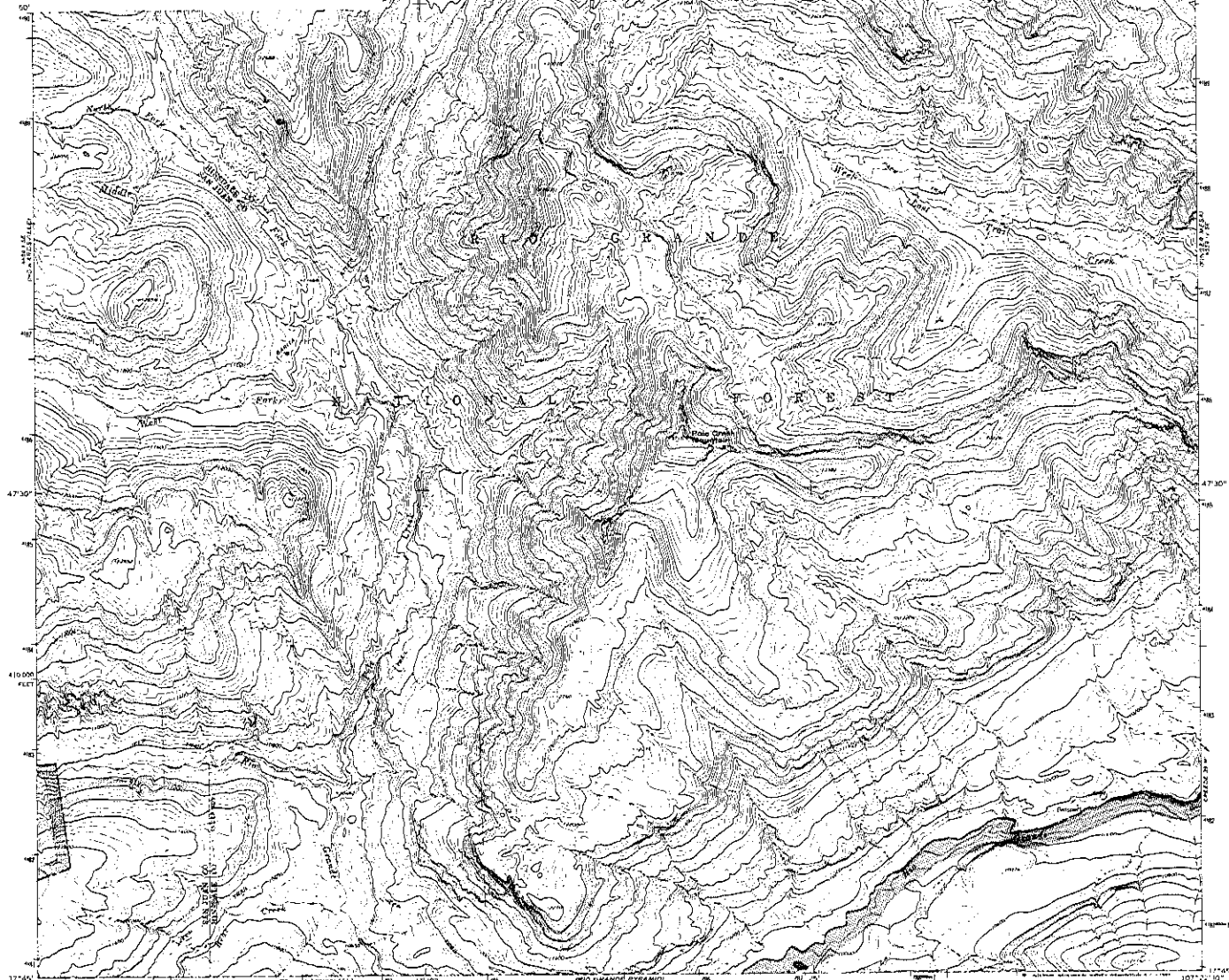
RIO GRANDE and SAN JUAN NATIONAL FORESTS  
COLORADO

## WEMINUCHE WILDERNESS

### LEGEND

- WILDERNESS BOUNDARY
- FOREST BOUNDARY
- NATIONAL, STATE OR PROVINCE LINE
- COUNTY LINE
- ALIENATED LANDS (PRIVATE, PRETENDED MINING CLAIMS, STATE OR NATIONAL PARKS AND MONUMENTS, INDIAN RESERVATIONS, ETC.)
- WITHDRAWALS EXCEPT E.O. 10380
- E.O. 10380 WITHDRAWALS

The exterior boundary of Weminuche Wilderness, Rio Grande and San Juan National Forests, Rocky Mountain Region, May 1981, as added to the National Wilderness Preservation System by Public Law 93-632 1/3/75 and as amended by Public Law 96-560 12/22/80.



Map compiled and published by the Geological Survey  
Control by USGS and USFWS  
Topography by photogrammetric methods from aerial  
photographs taken 1963, 1964 and 1965  
Political boundaries 1927 North American datum  
10,000-foot and based on Colorado intermediate section north zone  
1000-meter Universal Transverse Mercator grid 1983  
June 13 shown on blue  
Land areas have not been established in this area

LOW LAND AREA (LOW MAGNETIC NORTH  
DECLINATION AT CENTER OF AREA)

THIS MAP IS PART OF THE NATIONAL MAP ACTIVITY PROGRAM  
FOR SALE BY U.S. GEOLOGICAL SURVEY, DENVER, COLORADO 80260 OR WASHINGTON, D.C. 20242  
A LEGEND DESCRIBING TOPOGRAPHIC MAPS AND SYMBOLS IS AVAILABLE ON REQUEST



ROAD CLASSIFICATION  
Unimproved dirt

POLE CREEK MOUNTAIN, COLO.  
N 37° 45' - W 107° 22' 30"

1984  
AMERICAN MAP COMPANY



USDA FOREST SERVICE  
Rocky Mountain Region

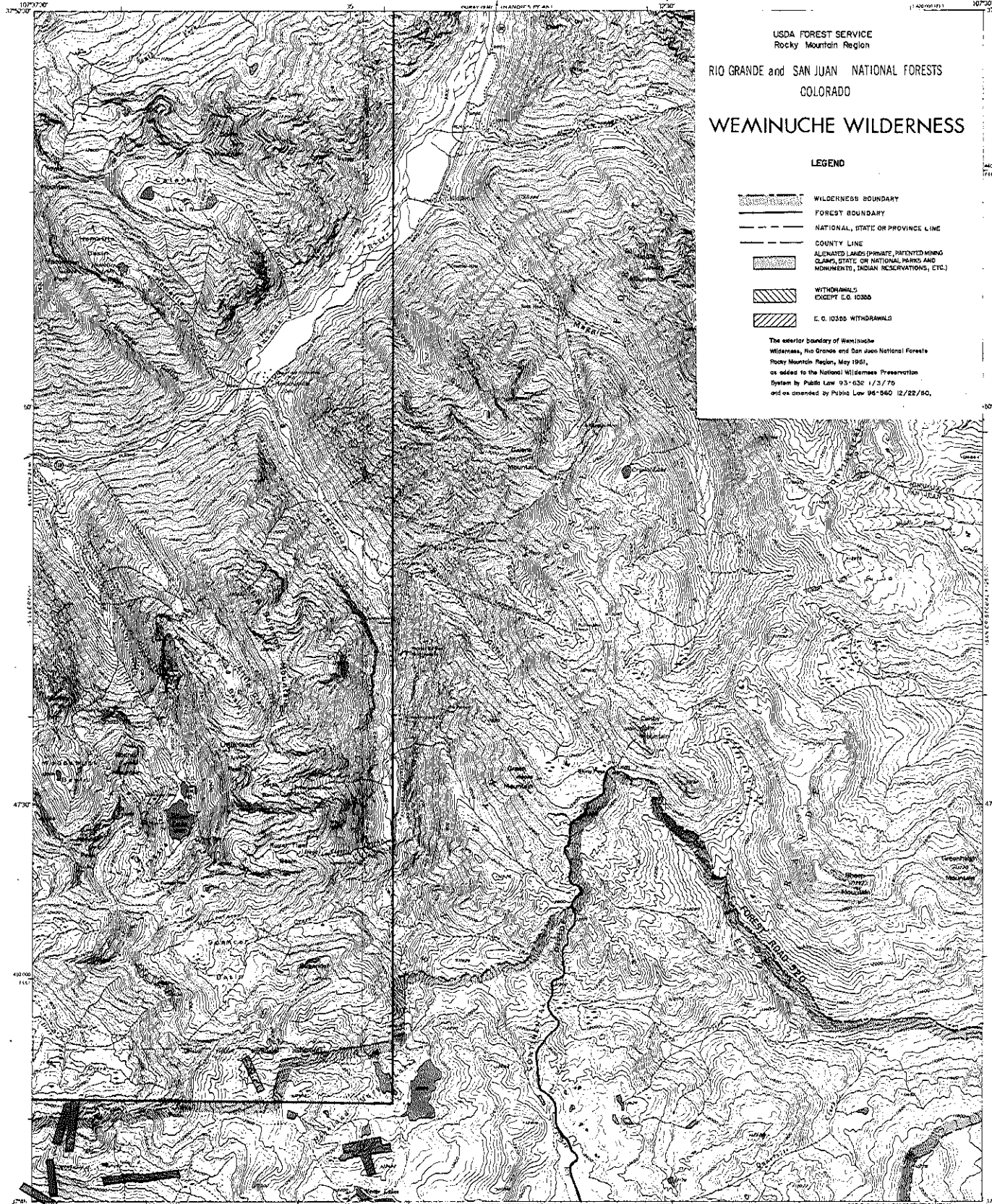
RIO GRANDE and SAN JUAN NATIONAL FORESTS  
COLORADO

# WEMINUCHE WILDERNESS

## LEGEND

- WILDERNESS BOUNDARY
- FOREST BOUNDARY
- NATIONAL, STATE OR PROVINCE LINE
- COUNTY LINE
- ALIENATED LANDS (PRIVATE, PATENTED MINING CLAIMS, STATE OR NATIONAL PARKS AND MONUMENTS, INDIAN RESERVATIONS, ETC.)
- WITHDRAWALS EXCEPT E.O. 10366
- E.O. 10366 WITHDRAWALS

The exterior boundary of Weminuche Wilderness, Rio Grande and San Juan National Forests, Rocky Mountain Region, May 1951, as added to the National Wilderness Preservation System by Public Law 93-632 1/3/75 and as amended by Public Law 95-640 12/22/80.

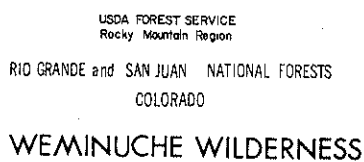


Map made, edited, and published by the Geological Survey  
Control by USGS  
Topography from aerial photographs by methods  
Aerial photographs taken 1953. First check 1955  
Photocopy made 1957. North American datum  
10,000 feet and above - Colorado coordinate system  
with projection  
Land areas are shaded in T. 40 N., T. 41 N., and T. 42 N. R. 6 W.  
and R. 7 W. Section 33 (containing data  
All mining locations in this map are marked unless otherwise indicated  
The best locations are shown in brown








CONTOUR INTERVAL 40 FEET  
(40' = 12.8 METER)

ROAD CLASSIFICATION  
Light duty  
Heavy duty  
2-lane road

HOWARDSVILLE, COLO.



### LEGEND

- |   |   |
|---|---|
|  | WILDERNESS BOUNDARY   |
|  | FOREST BOUNDARY   |
|  | NATIONAL, STATE OR PROVINCE LINE  |
|  | COUNTY LINE   |
|  | ALIENATED LANDS (PRIVATE, PATENTED MINING CLAIMS, STATE OR NATIONAL PARKS AND MONUMENTS, INDIAN RESERVATIONS, ETC.) |
|  | WITHDRAWALS<br>EXCEPT E.O. 10380  |
|  | E.O. 10380 WITHDRAWALS  |

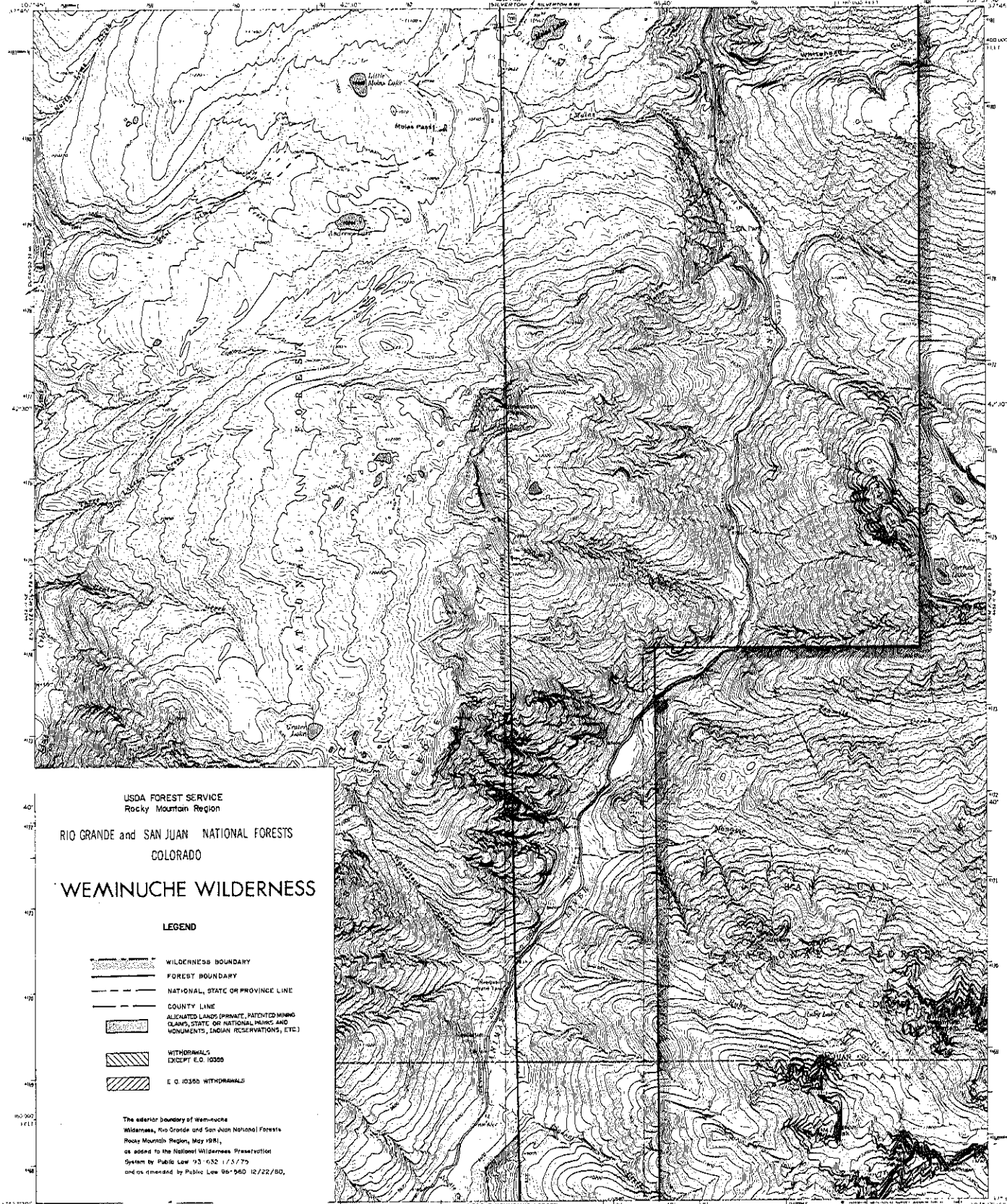
The exterior boundary of Weminicahe Wilderness, Rio Grande and San Juan National Forests Rocky Mountain Region, May 1961, as added to the National Wilderness Preservation System by Public Law 93-632 1/3/75 and as amended by Public Law 96-580 12/22/80.

[illegible]

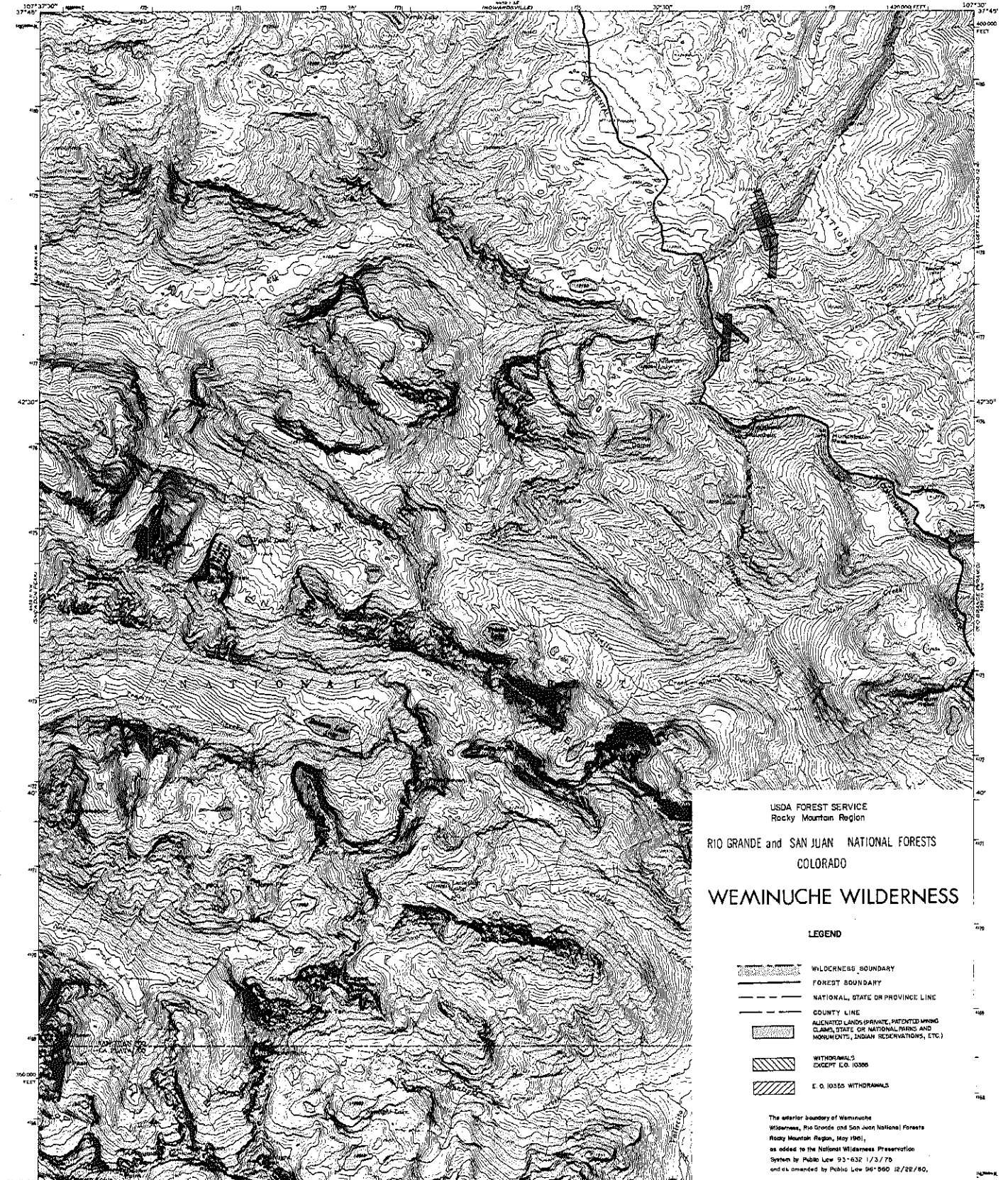
THIS MAP COMPILES WITH NATIONAL MAP ACCURACY STANDARDS  
FOR SALE BY U. S. GEOLOGICAL SURVEY, DENVER 25, COLORADO OR WASHINGTON 25, D. C.  
A FOLDER DESCRIBING TOPOGRAPHIC MAPS AND SYMBOLS IS AVAILABLE ON REQUEST

**INDEX CLASSIFICATION**  
 ———— *Library data*  
 ———— *Library data*  
 ———— *Library data*

SILVERTON, COLO  
 10 W. 1st St. - 100 ft. - 100 ft. - 100 ft. - 100 ft.  
 100 ft. - 100 ft. - 100 ft. - 100 ft. - 100 ft.  
 100 ft. - 100 ft. - 100 ft. - 100 ft. - 100 ft.





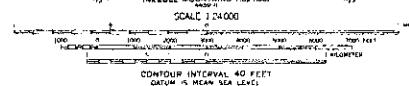


USDA FOREST SERVICE  
Rocky Mountain Region  
RIO GRANDE and SAN JUAN NATIONAL FORESTS  
COLORADO  
**WEMINUCHE WILDERNESS**

LEGEND

- WILDERNESS BOUNDARY
- FOREST BOUNDARY
- NATIONAL, STATE OR PROVINCE LINE
- COUNTY LINE
- ALIENATED LANDS (PRIVATE, PATENTED MINING CLAIMS, STATE OR NATIONAL PARKS AND MONUMENTS, INDIAN RESERVATIONS, ETC.)
- WITHDRAWALS EXCEPT E.O. 10385
- E.O. 10385 WITHDRAWALS

The exterior boundary of Weminuche Wilderness, Rio Grande and San Juan National Forests Rocky Mountain Region, May 1961, as added to the National Wilderness Preservation System by Public Law 93-632 1/3/75 and as amended by Public Law 94-560 12/28/80.



Mapped, edited, and published by the Geological Survey  
Control by USGS and USACE  
Topography by photogrammetric methods from aerial photographs taken 1963 First checked 1964  
Projection: 1927 North American datum  
10,000-foot grid based on Colorado coordinate system, north zone  
3000-meter Universal Transverse Mercator grid ticks, zone 12, shown in blue  
Land uses omitted because of insufficient data

USGS 1980 AND 1973 MAGNETIC DATA  
DEFLECTION AT CENTER OF SHEET

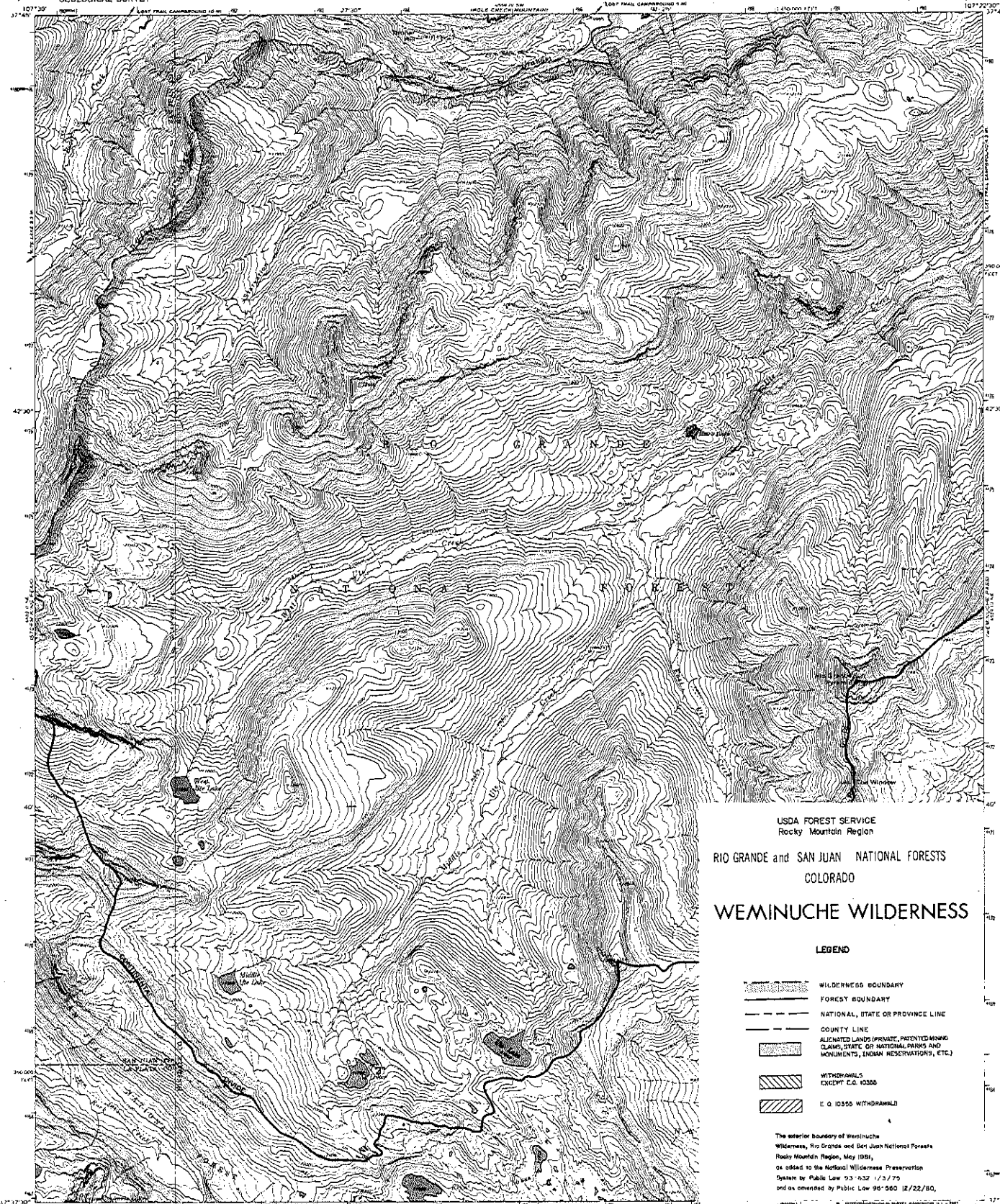
THIS MAP COMPLETES WITH NATIONAL MAP ACCURACY STANDARDS  
FOR SALE BY U.S. GEOLOGICAL SURVEY, DENVER, COLORADO 80275, OR RESTON, VIRGINIA 20192  
A FOLDER DESCRIBING TOPOGRAPHIC MAPS AND SYMBOLS IS AVAILABLE ON REQUEST

QUADRANGLE LOCATION

ROAD CLASSIFICATION  
Trails

STORM KING PEAK, COLO.  
NEAR NEEDLE MOUNTAIN IN QUADRANGLE  
N3737 S-W10730 E 5

1964  
4459 II NC-SERIES 7877



USDA FOREST SERVICE  
Rocky Mountain Region  
RIO GRANDE and SAN JUAN NATIONAL FORESTS  
COLORADO

## WEMINUCHE WILDERNESS

### LEGEND

- WILDERNESS BOUNDARY
- FOREST BOUNDARY
- NATIONAL, STATE OR PROVINCE LINE
- COUNTY LINE
- ALIENATED LANDS (PRIVATE, PATENTED MINING CLAIMS, STATE OR NATIONAL PARKS AND MONUMENTS, INDIAN RESERVATIONS, ETC.)
- WITHDRAWALS EXCEPT E.G. 10300
- E.G. 10355 WITHDRAWALS

The exterior boundary of Weminuche Wilderness, Rio Grande and San Juan National Forests, Rocky Mountain Region, May 1981, as added to the National Wilderness Preservation System by Public Law 93-632 (1/3/75) and as amended by Public Law 95-560 (12/22/80).

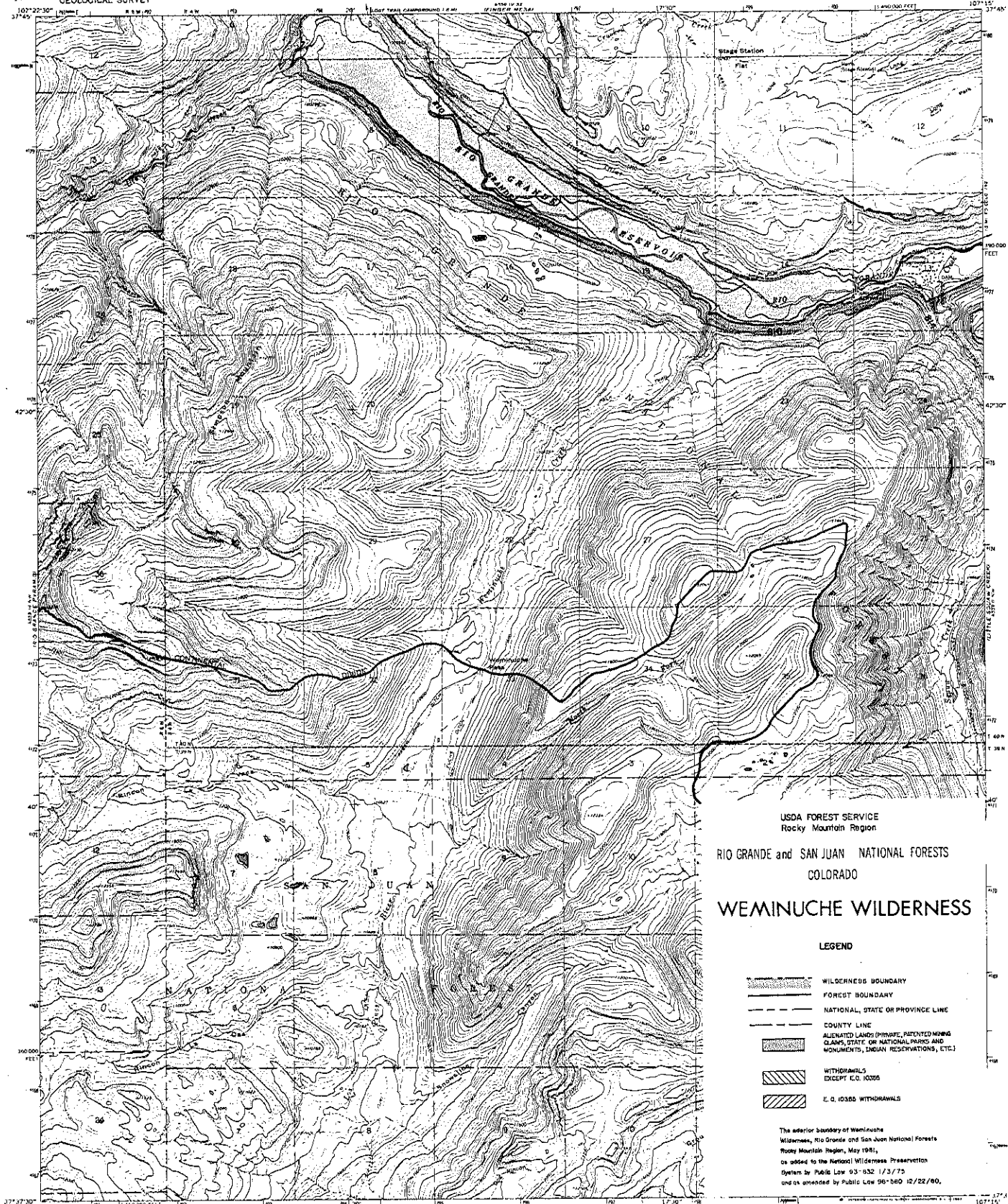
ROAD CLASSIFICATION  
Unimproved dirt



RIO GRANDE PYRAMID, COLO.  
N 37° 5' - W 107° 22' 47" N

1964  
AMS 4508 H NW SERIES VANT

THIS MAP COMPLETES WITH NATIONAL MAP ACCURACY STANDARDS  
FOR SALE BY U.S. GEOLOGICAL SURVEY, DENVER, COLORADO 80219, ON WASHINGTON, D.C. 20242  
A FOLDER DESCRIBING TOPOGRAPHIC MAPS AND SYMBOLS IS AVAILABLE ON REQUEST



USDA FOREST SERVICE  
Rocky Mountain Region

RIO GRANDE and SAN JUAN NATIONAL FORESTS  
COLORADO

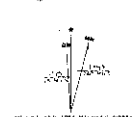
WEMINUCHE WILDERNESS

LEGEND

- WILDERNESS BOUNDARY
- FOREST BOUNDARY
- NATIONAL, STATE OR PROVINCE LINE
- COUNTY LINE
- ALIENATED LANDS (PRIVATE, PATENTED MINING CLAIMS, STATE OR NATIONAL PARKS AND MONUMENTS, INDIAN RESERVATIONS, ETC.)
- WITHDRAWALS EXCEPT E.O. 10385
- E.O. 10385 WITHDRAWALS

The exterior boundary of Weminuche Wilderness, Rio Grande and San Juan National Forests, Rocky Mountain Region, May 1981, as added to the National Wilderness Preservation System by Public Law 93-632 1/3/75 and as amended by Public Law 96-580 12/22/80.

Maped, edited, and published by the Geological Survey  
Control by USGS and USGAS  
Topography by photogrammetric methods from aerial photographs taken 1963. First checked 1964.  
Polyconic projection. 1927 North American datum.  
10,000-foot and based on Colorado coordinate system, south zone 1000-meter Universal Transverse Mercator grid, zone 13, shown in blue.  
Where omitted, land areas have not been established.



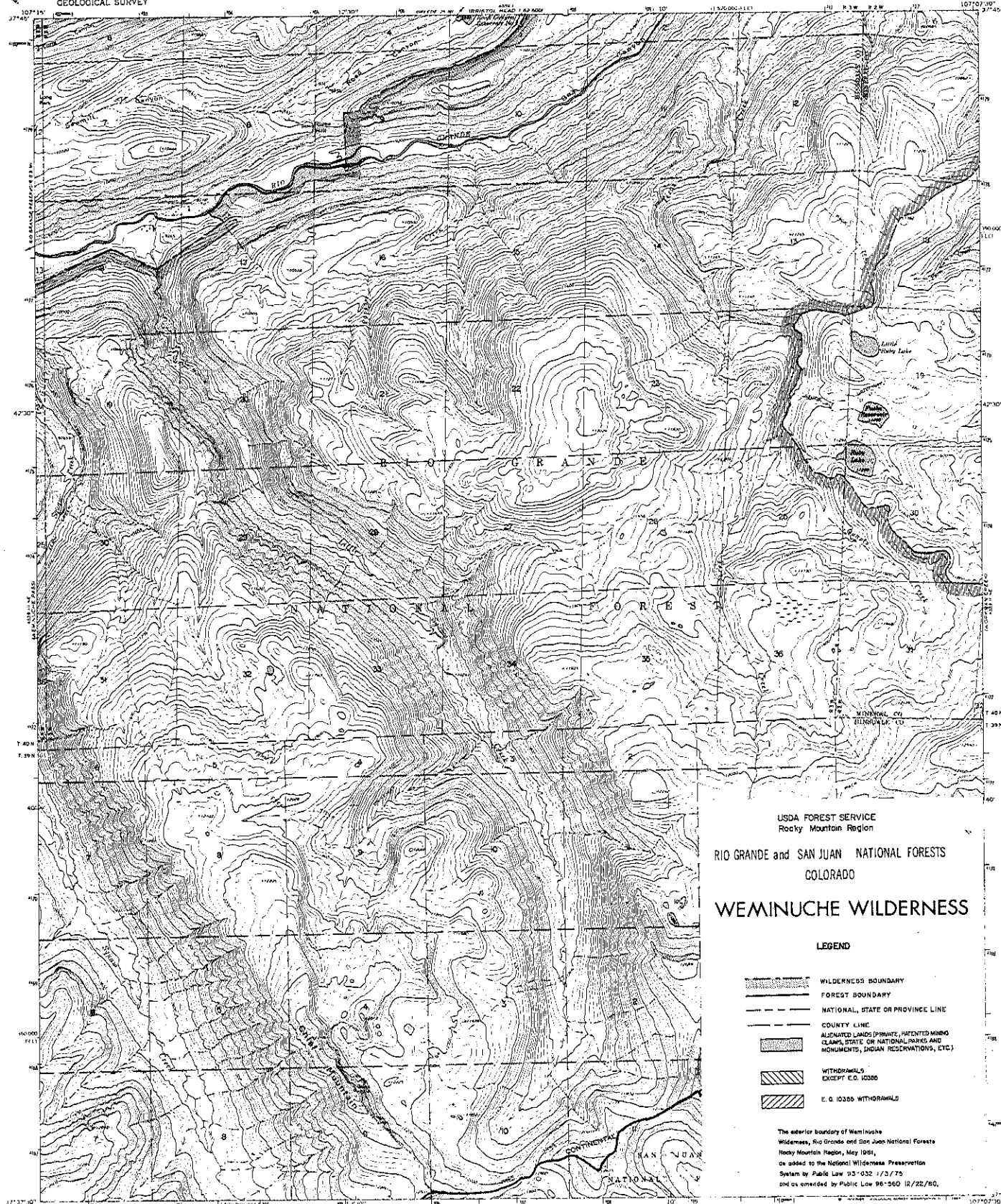
SCALE 1:24,000  
CONTOUR INTERVAL 40 FEET  
DAUM R. MEAN SEA LEVEL  
THIS MAP COMPLETS WITH NATIONAL MAP ACCURACY STANDARDS  
FOR SALE BY U.S. GEOLOGICAL SURVEY, DENVER, COLORADO 80219, OR WASHINGTON, D.C. 20547  
A FOLDER DESCRIBING TOPOGRAPHIC MAPS AND QUADRANGLES IS AVAILABLE ON REQUEST



WEMINUCHE PASS, COLO.  
N 37° 15' - W 107° 15'

1964  
AM 455-11 RE-SERIES VMT



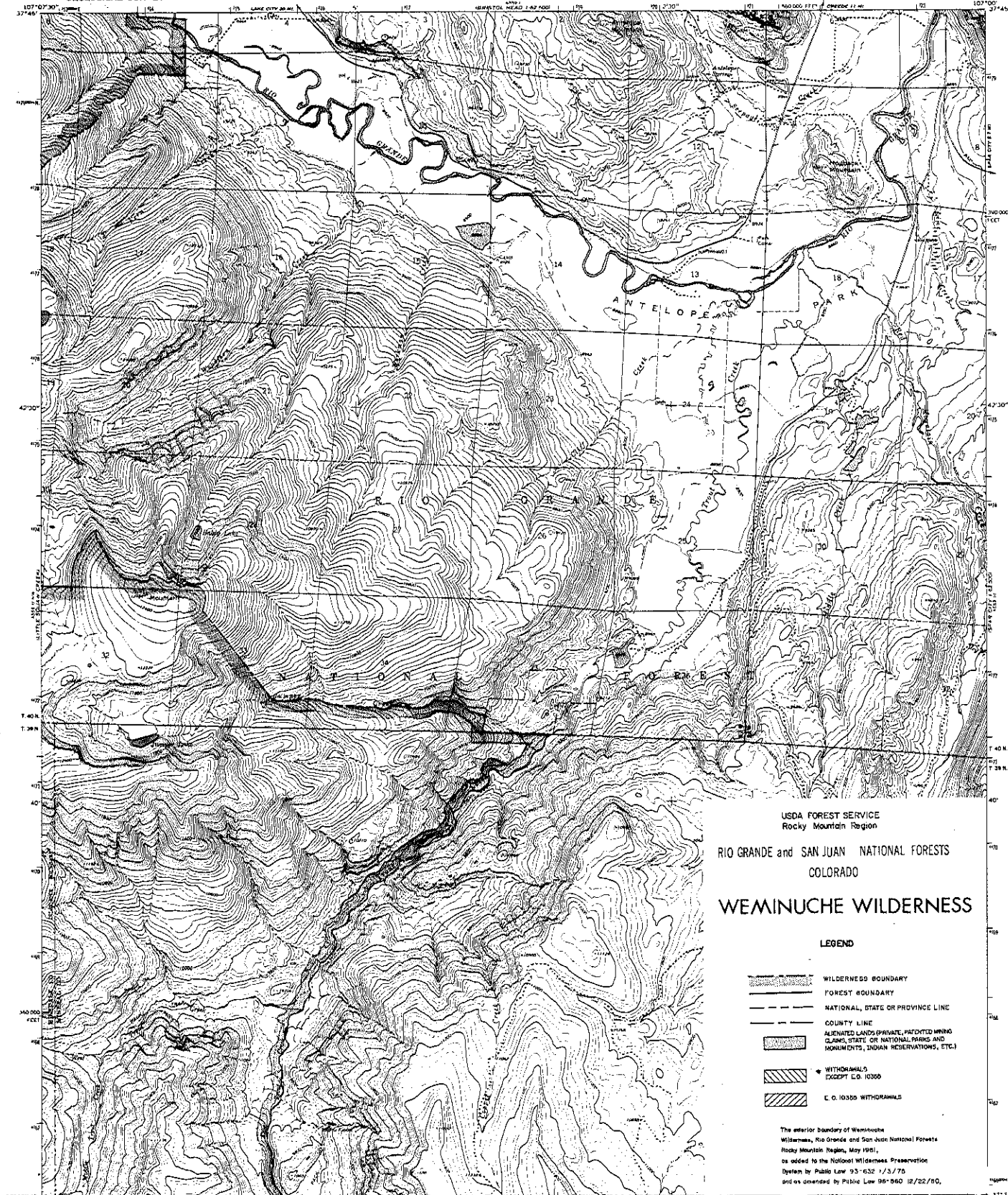


Mapped, edited and published by the Geological Survey  
Control by USGS and USACAS  
Topography by photogrammetry; methods from aerial  
photography taken 1963, 1 and other data  
Hydrology, vegetation, 1967 North American datum  
10,000 feet and based on Colorado coordinate system, south zone  
1985 meter Universal Transverse Mercator and 1985  
zone 13, datum, P 1985  
Where omitted, land areas have not been withdrawn or  
are not shown on map of 1985 date

THIS MAP, EXCEPT WHERE SHOWN OTHERWISE, IS A QUADRANGLE  
FOR SALE BY U.S. GEOLOGICAL SURVEY, DENVER, COLORADO 80225, OR WASHINGTON, D.C. 20542  
A FOLDER DESCRIBING TOPOGRAPHIC MAPS AND SYMBOLS IS AVAILABLE ON REQUEST

AMS 4700 (11) NW, 10/87, V.11





USDA FOREST SERVICE  
Rocky Mountain Region  
RIO GRANDE and SAN JUAN NATIONAL FORESTS  
COLORADO

WEMINUCHE WILDERNESS

LEGEND

- WILDERNESS BOUNDARY
- FOREST BOUNDARY
- NATIONAL, STATE OR PROVINCE LINE
- COUNTY LINE
- ALIENATED LANDS (PRIVATE, REDEVELOPED MINING CLAIMS, STATE OR NATIONAL PARKS AND MONUMENTS, INDIAN RESERVATIONS, ETC.)
- WITHDRAWALS EXCEPT U.S. 10355
- U.S. 10355 WITHDRAWAL

The exterior boundary of Weminuche Wilderness, Rio Grande and San Juan National Forests, Rocky Mountain Region, May 1981, as added to the National Wilderness Preservation System by Public Law 96-352 11/3/79 and as amended by Public Law 96-360 12/22/79.

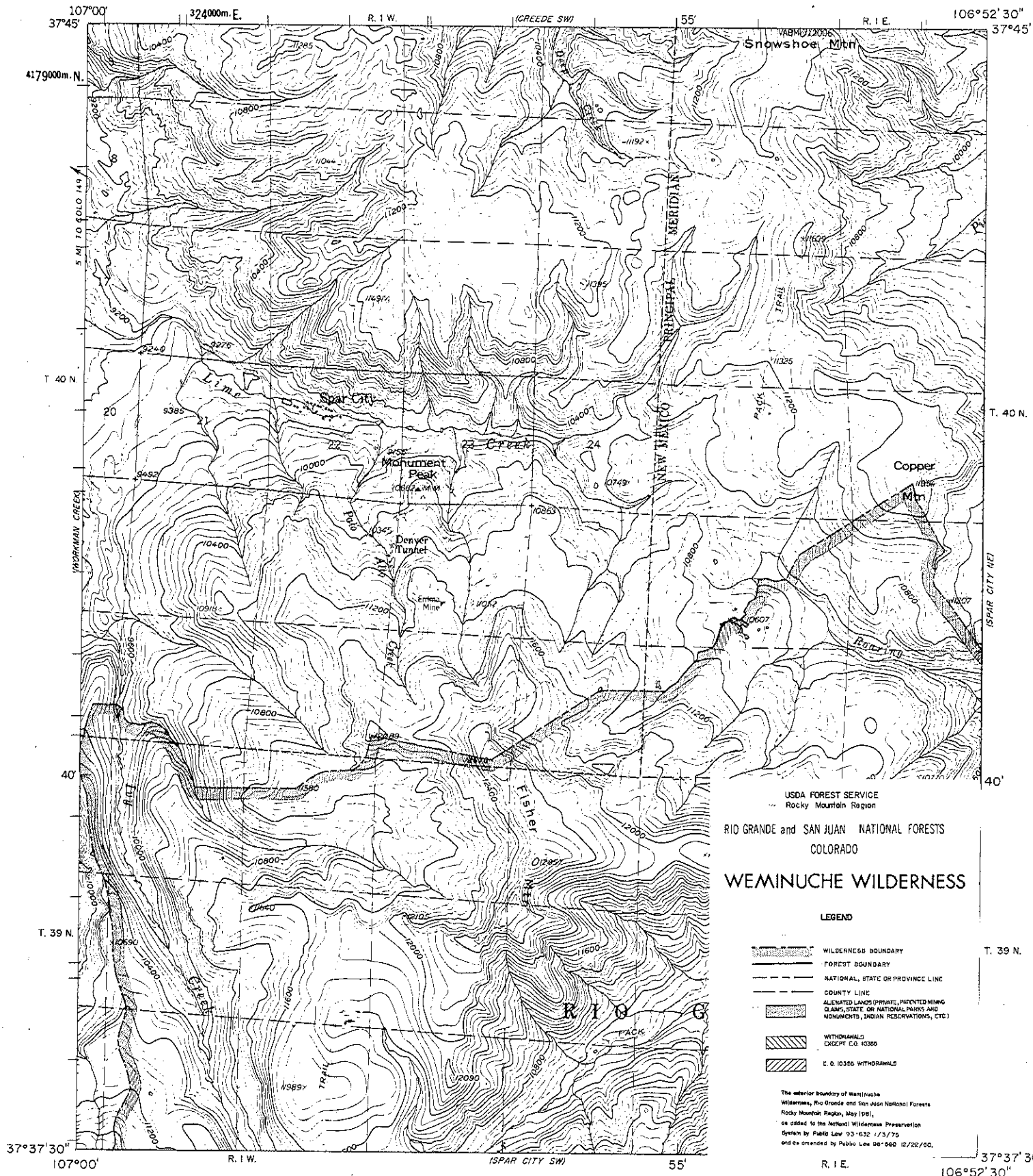
Map published by the Geological Survey  
Control by USGS and USGAS  
Topography by photogrammetric methods from aerial  
photographs taken 1963. Field checked 1964.  
Projection: 1927 North American datum  
10,000-foot grid based on Colorado coordinate system, north zone  
1000-meter Universal Transverse Mercator and ticks,  
zone 13, shown in blue.  
Faint red dashed lines indicate untested fence lines  
where contacted. Land shown here has not been established or  
is not shown because of insufficient data.

USGS and USGAS  
REVISION TO CENTER OF MAP

SCALE 1:24,000  
CONTOUR INTERVAL 40 FEET  
DOTTED LINES REPRESENT 100-FOOT CONTOURS  
DOTTED LINES REPRESENT 100-FOOT CONTOURS  
DOTTED LINES REPRESENT 100-FOOT CONTOURS

ROAD CLASSIFICATION  
Light duty  
Unimproved dirt

WORKMAN CREEK, COLO.  
N37°37'30" W107°00'00"  
1984  
AMC 4444 II RE. 11/15/81



R. I. E.	50'	(GREED SE)	1 620 000 FEET
----------	-----	------------	----------------

R. 2 E. | WAGON WHEEL GAP 3 1/2 MI CREEDE 13 MI

106°45'  
37°45'

T. 40 N.

T 40 N

380 000  
FEET

(SOUTH FORK WEST)

4

T. 39 N.

37°37'30"  
45'

37°37'30"   
106°52'30"

R. I. E.

50'

(SPAR CITY SE)

R 2 F

106°45'

SC&amp;F 2:4000

CONFIDENCE INTERVALS FOR FLI

### LEGEND

WILDERNESS BOUNDARY

• FOREST BOUNDARY

- NATIONAL, STATE OR PROVINCE LINE

- COUNTY LINE

ALIENATED LANDS (PRIVATE, PATENTED MINING  
CLAIMS, STATE OR NATIONAL PARKS AND

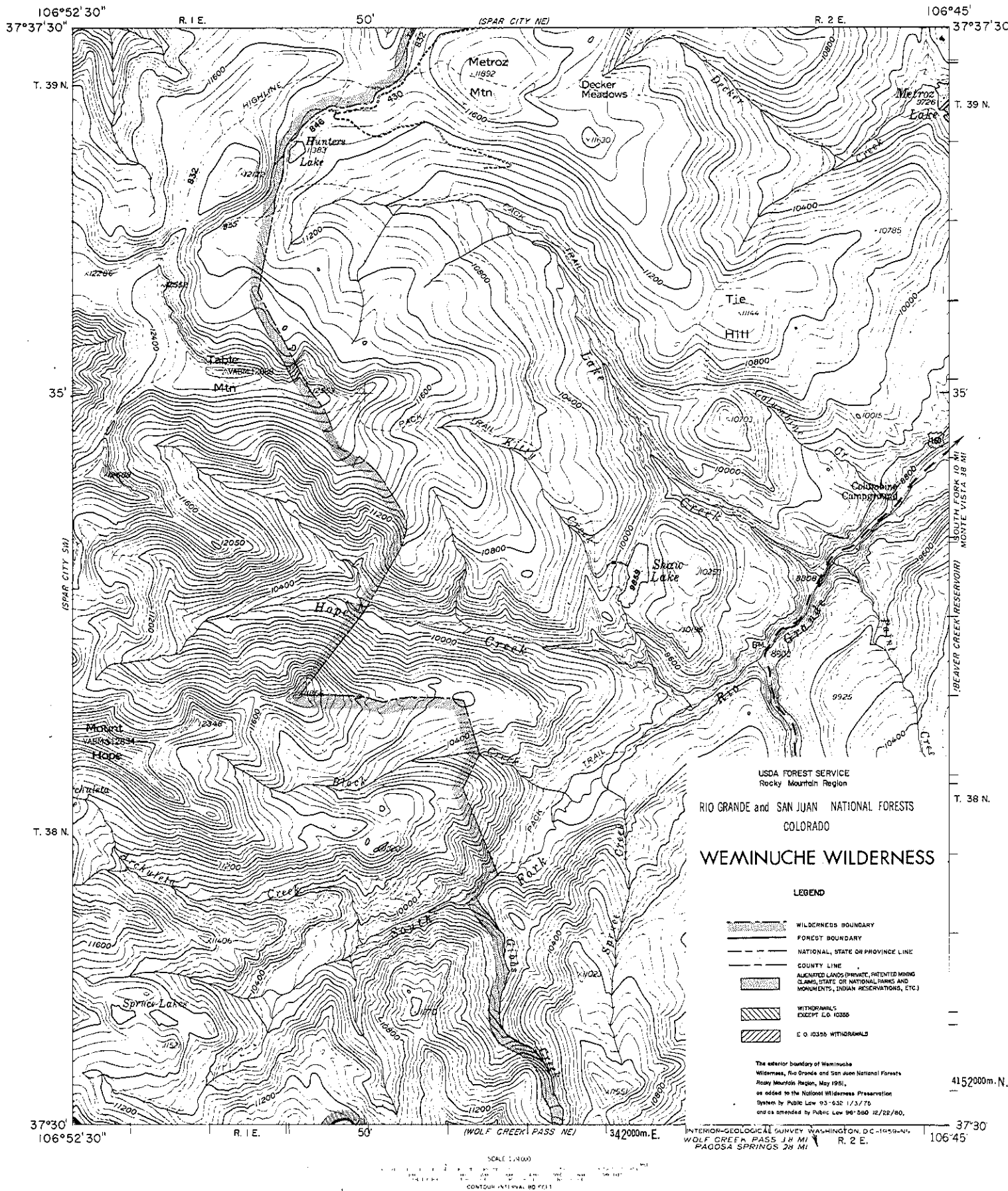
MONUMENTS, INDIAN RESERVATIONS, ETC.

## WITHDRAWALS

CRISTO RE: AGORA

The exterior boundary of Windinuche Wilderness, Rio Grande and San Juan National Forests, Rocky Mountain Region, May 1981, as added to the National Wilderness Preservation System by Public Law 93-632 1/3/76 and as amended by Public Law 96-560 12/22/80

SPAR CITY NE, COLO.  
1957  
14 OF 29



U.S.D.A. FOREST SERVICE  
Rocky Mountain Region

RIO GRANDE and SAN JUAN NATIONAL FORESTS  
COLORADO

**WEMINUCHE WILDERNESS**

LEGEND

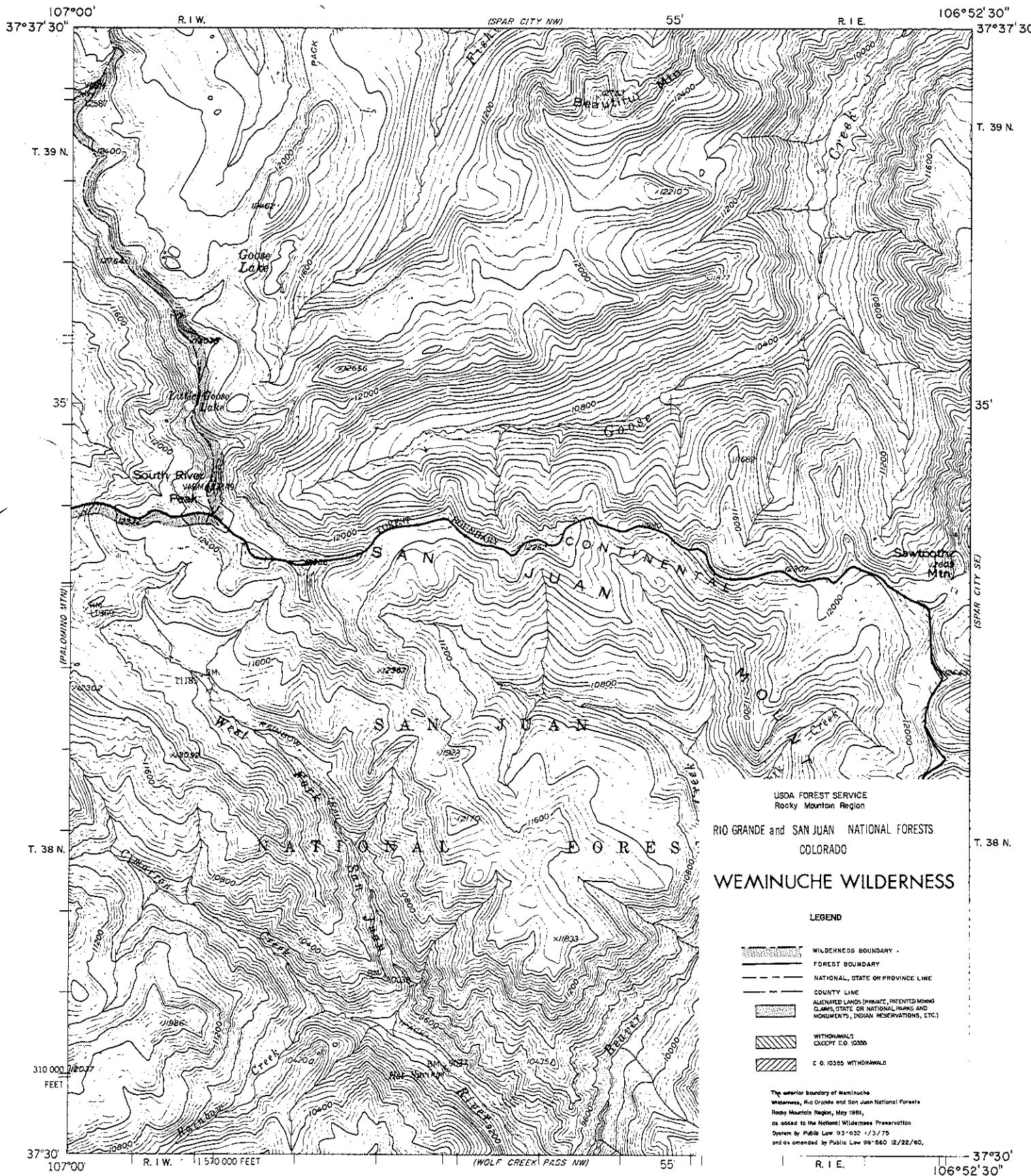
- WILDERNESS BOUNDARY
- FOREST BOUNDARY
- NATIONAL, STATE OR PROVINCE LINE
- COUNTY LINE
- ALLEGED LANDS (PRIVATE, PATENTED MINING CLAIMS, STATE OR NATIONAL PARKS AND MONUMENTS, INDIAN RESERVATIONS, ETC.)
- WITHDRAWALS EXCEPT U.S. 10355
- U.S. 10355 WITHDRAWALS

The exterior boundary of Weminuche Wilderness, Rio Grande and San Juan National Forests, Rocky Mountain Region, May 1951, as added to the National Wilderness Preservation System by Public Law 93-632 1/3/76 and as amended by Public Law 96-580 12/22/80.

INTERIOR GEOLOGICAL SURVEY WASHINGTON, D.C. 20515-N  
WOLF CREEK PASS 3.4 MI R. 2 E.  
PAGOSA SPRINGS 28 MI

SPAR CITY SE, COLO.  
1957





USDA FOREST SERVICE  
Rocky Mountain Region

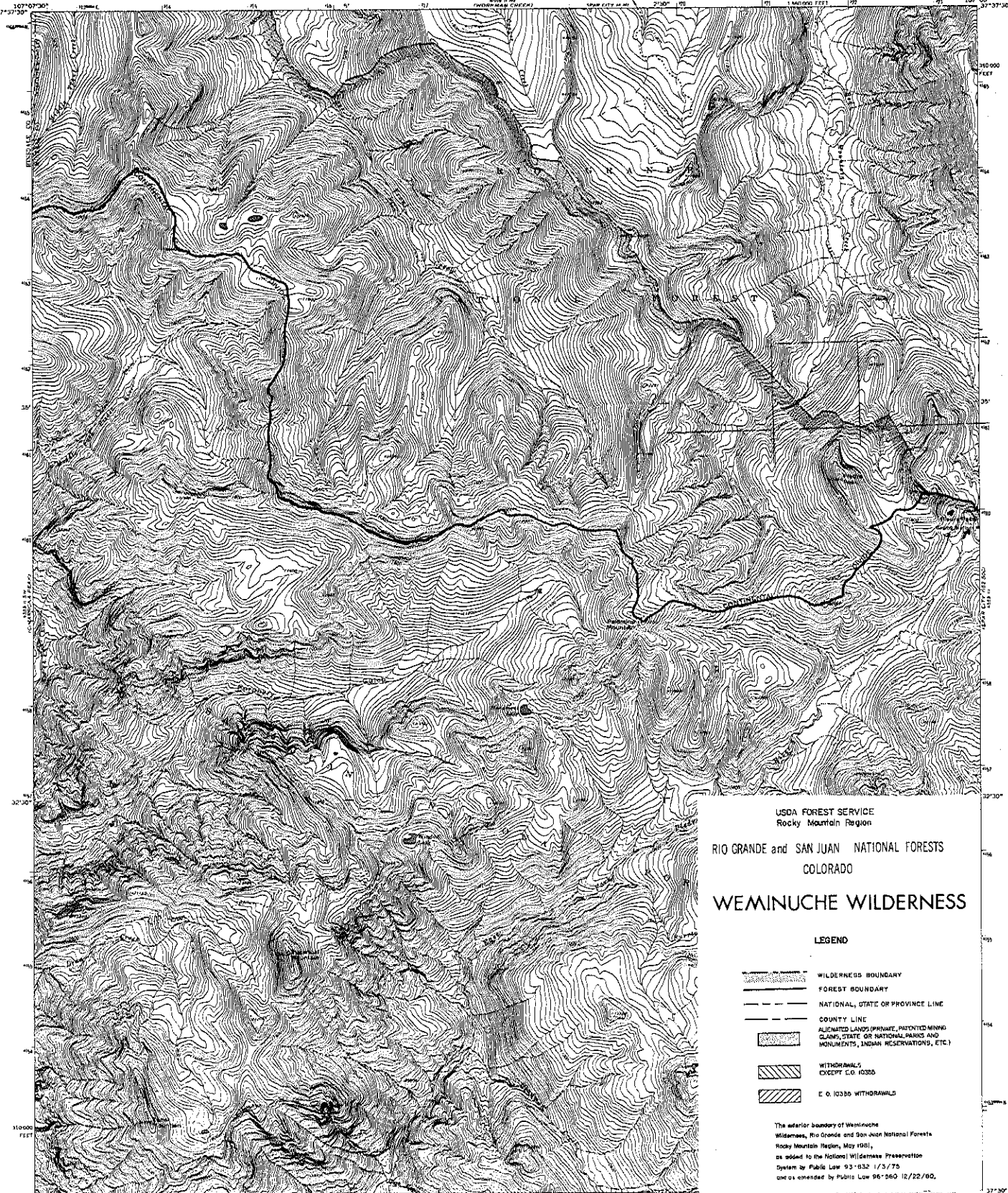
RIO GRANDE and SAN JUAN NATIONAL FORESTS  
COLORADO

**WEMINUCHE WILDERNESS**

LEGEND

- WILDERNESS BOUNDARY
- FOREST BOUNDARY
- NATIONAL, STATE OR PROVINCE LINE
- COUNTY LINE
- ALLEGED LANDS (PRIVATE, INTENDED MINING CLAIMS, STATE OR NATIONAL PARKS AND MONUMENTS, INDIAN RESERVATIONS, ETC.)
- WITHDRAWALS  
CAGOPY C.D. 123000
- E.O. 12305 WITHDRAWALS

The superior boundary of Weminuche Wilderness, Rio Grande and San Juan National Forests Rocky Mountain Region, May 1981, as added to the National Wilderness Preservation System by Public Law 93-632 1/3/75 and as amended by Public Law 99-660 12/22/90.



USDA FOREST SERVICE  
Rocky Mountain Region  
RIO GRANDE and SAN JUAN NATIONAL FORESTS  
COLORADO

WEMINUCHE WILDERNESS

LEGEND

- WILDERNESS BOUNDARY
- FOREST BOUNDARY
- NATIONAL, STATE OR PROVINCE LINE
- COUNTY LINE
- ALLOCATED LANDS (PRIVATE, PATENTED MINING CLAIMS, STATE OR NATIONAL PARKS AND MONUMENTS, INDIAN RESERVATIONS, ETC.)
- WITHDRAWALS EXCEPT E.O. 10335
- E.O. 10335 WITHDRAWALS

The exterior boundary of Weminuche Wilderness, Rio Grande and San Juan National Forests, Rocky Mountain Region, May 1961, as added to the National Wilderness Preservation System by Public Law 93-552 1/3/75 and as amended by Public Law 96-560 12/22/80.

- ROAD CLASSIFICATION
- Primary highway, hard surface
  - Light duty road, hard or improved surface
  - Secondary highway, hard surface
  - Unimproved road
  - Interim Route
  - U.S. Route
  - State Route

PALOMINO MOUNTAIN, COLO.  
N 37 30' - W 107 00' 15"

1973  
AMB AND II DE SERIES 7417

Mapped, edited, and published by the Geological Survey

Control by USGS and NGDS/NOAA

Topography by photogrammetric methods from aerial photographs taken 1972 Field checks 1973

Projections and 10,000 foot grid ticks. Colorado

coordinate system, south zone (Lambert conformal cone)

1000-meter Universal Transverse Mercator grid ticks, zone 13, shown in blue. 1927 North American datum

Land lines have not been established or are not shown because of insufficient data.

SCALE 1:24,000

1 MILE  
1 KILOMETER

CONTOUR INTERVAL 40 FEET

NATIONAL GEODETIC VERTICAL DATUM OF 1929

THIS MAP COMPLETES WITH NATIONAL MAP ACCURACY STANDARDS  
FOR SALE BY U.S. GEOLOGICAL SURVEY BUREAU OF GEOLOGICAL SURVEY, RESTON, VIRGINIA 20192  
A FOLDER DESCRIBING TOPOGRAPHIC MAPS AND SYMBOLS IS AVAILABLE ON REQUEST

UNITED STATES  
DEPARTMENT OF THE INTERIOR  
GEOLOGICAL SURVEY

CIMARRONA PEAK QUADRANGLE  
COLORADO  
7.5 MINUTE SERIES (TOPOGRAPHIC)

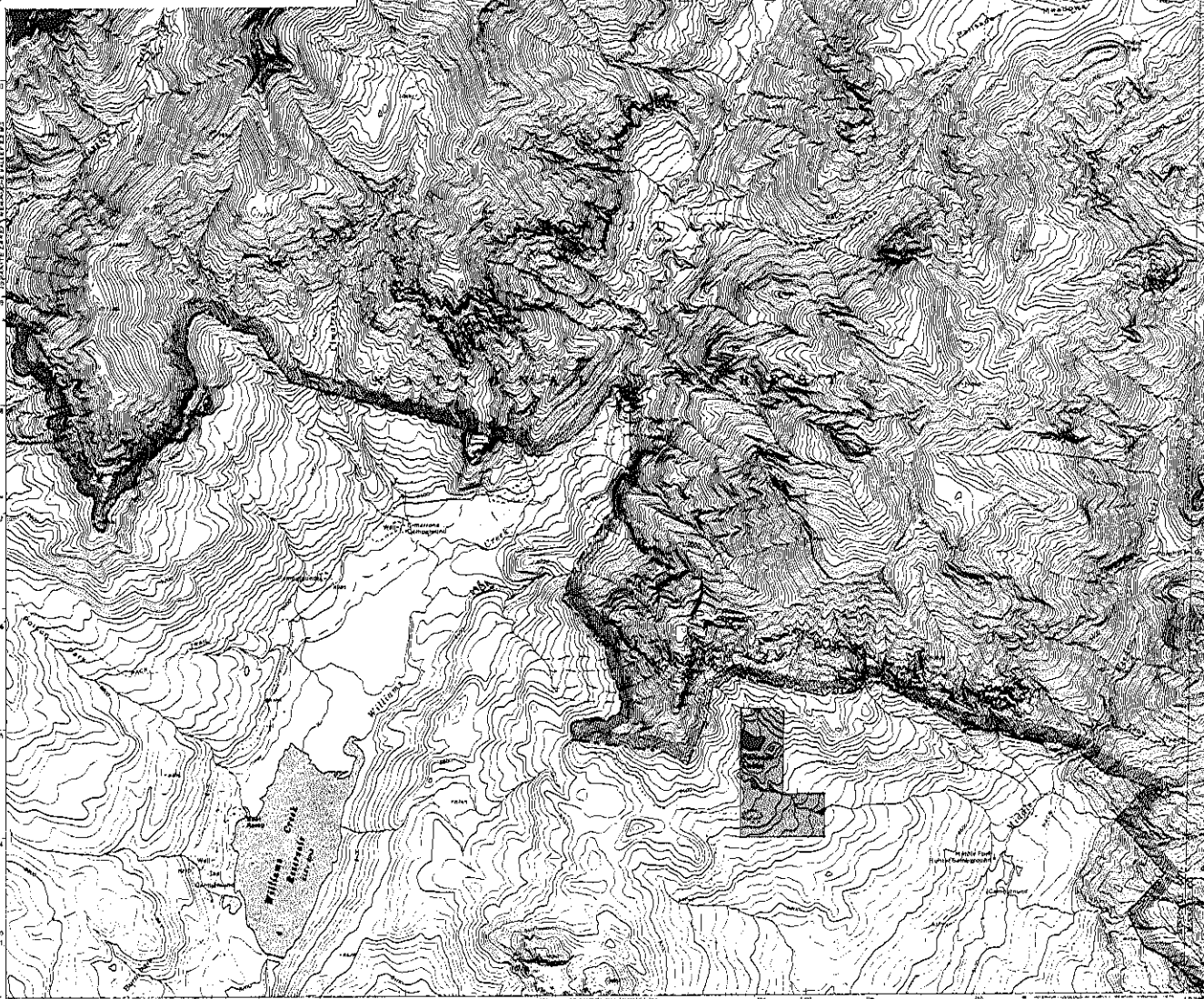
USDA FOREST SERVICE  
Rocky Mountain Region  
RIO GRANDE and SAN JUAN NATIONAL FORESTS  
COLORADO

WEMINUCHE WILDERNESS

LEGEND

- WILDERNESS BOUNDARY
- FOREST BOUNDARY
- NATIONAL, STATE OR PROVINCE LINE
- COUNTY LINE
- ALIENATED LANDS (PRIVATE, PATENTED MINING CLAIMS, STATE OR NATIONAL PARKS AND MONUMENTS, INDIAN RESERVATIONS, ETC.)
- WITHDRAWALS EXCEPT E.O. 10306
- E.O. 10306 WITHDRAWALS

The interior boundary of Weminuche Wilderness, Rio Grande and San Juan National Forests, Rocky Mountain Region, May 1981, as added to the National Wilderness Preservation System by Public Law 93-632, 1/3/75, and as amended by Public Law 96-540, 12/22/80.



Mapped, edited, and published by the Geological Survey

Control by USGS and NDS/NDAA  
Topography by photogrammetric methods from aerial photographs taken 1972. Field checked 1973.  
Projection and 10,000-foot and ticks. Colorado coordinate system, south zone (Lambert conformal conic).  
1000-foot Universal Transverse Mercator grid ticks, zone 13, shown in blue. 1927 North American datum.  
Land lines have not been established or are not shown because of insufficient data.

SCALE 1:24,000

CONTOUR INTERVAL 40 FEET  
NATIONAL STANDARD VERTICAL DATUM 1929

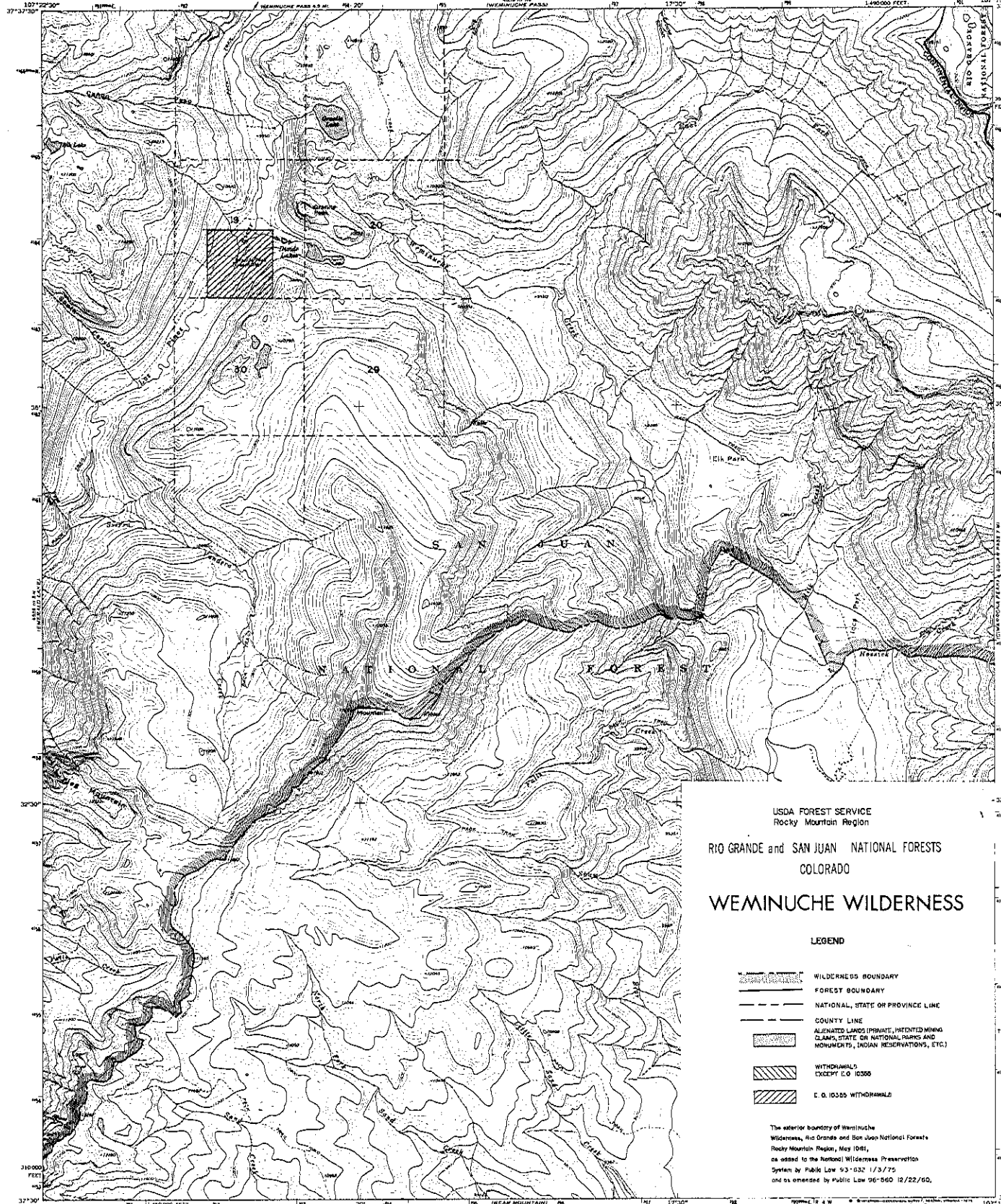
ROAD CLASSIFICATION  
Primary highway hard surface  
Light duty road, hard or improved surface  
Secondary highway hard surface  
Unimproved road  
Weminuche Route  
U.S. Route  
State Route

CIMARRONA PEAK, COLO.  
N71°10'-W107°07' N 75

1973

4805 4806 4807 4808 4809 4810 4811 4812 4813 4814 4815 4816 4817 4818 4819 4820 4821 4822 4823 4824 4825 4826 4827 4828 4829 4830 4831 4832 4833 4834 4835 4836 4837 4838 4839 4840 4841 4842 4843 4844 4845 4846 4847 4848 4849 4850 4851 4852 4853 4854 4855 4856 4857 4858 4859 4860 4861 4862 4863 4864 4865 4866 4867 4868 4869 4870 4871 4872 4873 4874 4875 4876 4877 4878 4879 4880 4881 4882 4883 4884 4885 4886 4887 4888 4889 4890 4891 4892 4893 4894 4895 4896 4897 4898 4899 4900 4901 4902 4903 4904 4905 4906 4907 4908 4909 4910 4911 4912 4913 4914 4915 4916 4917 4918 4919 4920 4921 4922 4923 4924 4925 4926 4927 4928 4929 4930 4931 4932 4933 4934 4935 4936 4937 4938 4939 4940 4941 4942 4943 4944 4945 4946 4947 4948 4949 4950 4951 4952 4953 4954 4955 4956 4957 4958 4959 4960 4961 4962 4963 4964 4965 4966 4967 4968 4969 4970 4971 4972 4973 4974 4975 4976 4977 4978 4979 4980 4981 4982 4983 4984 4985 4986 4987 4988 4989 4990 4991 4992 4993 4994 4995 4996 4997 4998 4999 5000





USDA FOREST SERVICE  
Rocky Mountain Region

RIO GRANDE and SAN JUAN NATIONAL FORESTS  
COLORADO

WEMINUCHE WILDERNESS

LEGEND

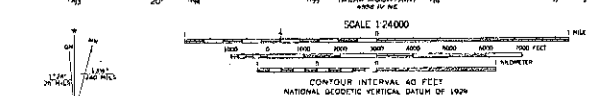
- WILDERNESS BOUNDARY
- FOREST BOUNDARY
- NATIONAL, STATE OR PROVINCE LINE
- COUNTY LINE
- ALIENATED LANDS (PRIVATE, INTENDED MINING CLAIMS, STATE OR NATIONAL PARKS AND MONUMENTS, INDIAN RESERVATIONS, ETC.)
- WITHDRAWALS EXCEPT E.O. 13305
- E.O. 13305 WITHDRAWALS

The exterior boundary of Weminuche Wilderness, Rio Grande and San Juan National Forests Rocky Mountain Region, May 1981, as added to the National Wilderness Preservation System by Public Law 96-532 1/3/75 and as amended by Public Law 96-560 12/22/60.

ROAD CLASSIFICATION

- Primary highway: Light duty road, hard or improved surface
- Secondary highway: Hard surface
- Unimproved road: Unimproved road
- Interstate Route: Interstate Route
- U.S. Route: U.S. Route
- Scale Route: Scale Route

Maped, edited, and published by the Geological Survey  
Control by USGS, USCA&GS and U.S. Forest Service  
Topography by photogrammetric methods from aerial photography taken 1975. Field checked 1973  
Projection and 10,000-foot grid: Colorado coordinate system, south zone (Lambert conformal conic) 1000-meter Universal Transverse Mercator grid (zone 13, shown in blue, 1927 North American datum)  
Where omitted, land lines have not been established or are not shown because of insufficient data



THIS MAP COMPLEYS WITH NATIONAL MAP ACCURACY STANDARDS  
FOR SALE BY U.S. GEOLOGICAL SURVEY, DENVER, COLORADO 80205, OR RESTON, VIRGINIA 22092  
A FOLDER DESCRIBING TOPOGRAPHIC MAPS AND SYMBOLS IS AVAILABLE ON REQUEST

GRANITE LAKE, COLO.  
N3730-W10715-7.5  
1973  
AMS 4550 (11 88-SERIES 7477

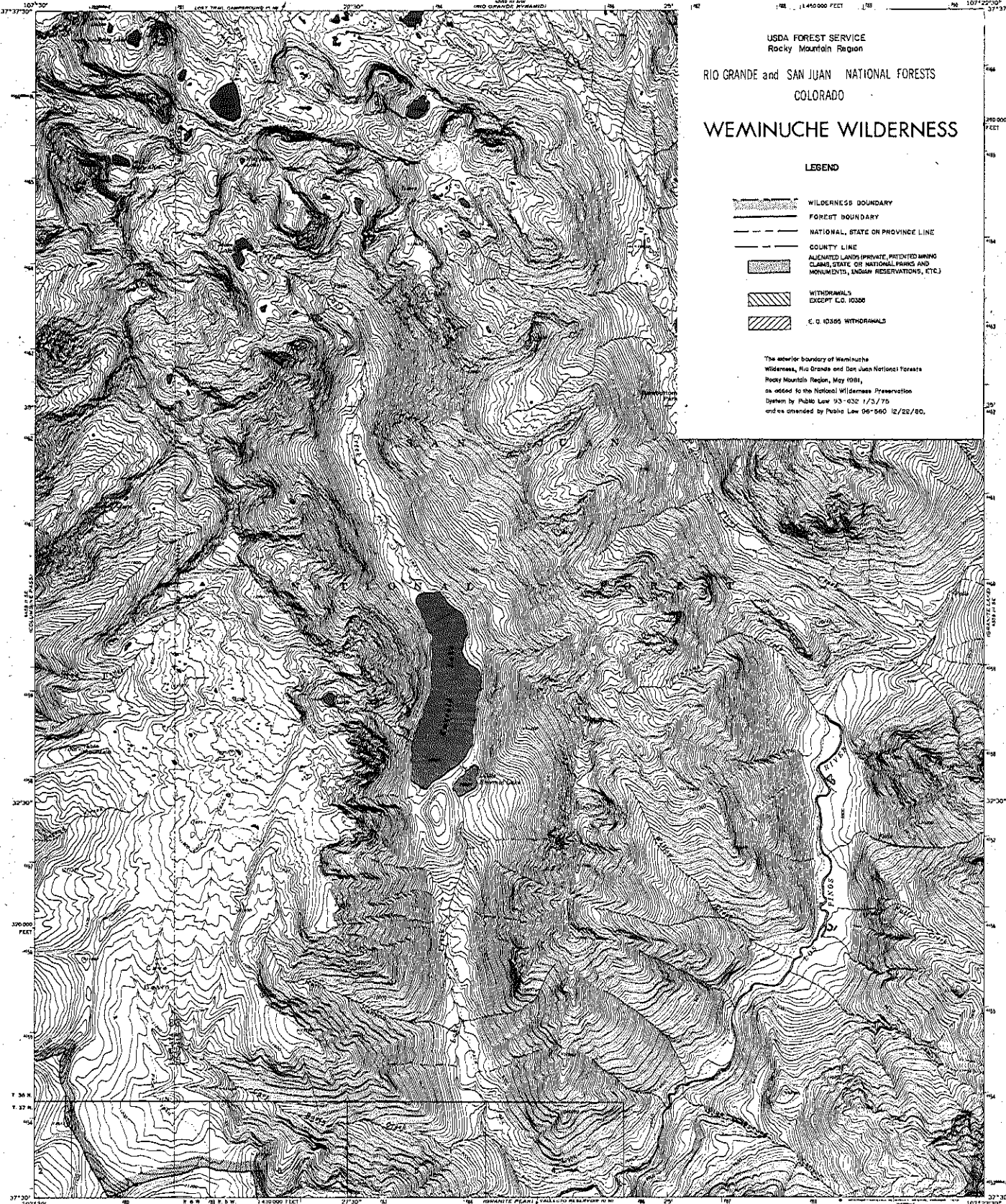


USDA FOREST SERVICE  
Rocky Mountain Region  
RIO GRANDE and SAN JUAN NATIONAL FORESTS  
COLORADO  
**WEMINUCHE WILDERNESS**

LEGEND

- WILDERNESS BOUNDARY
- FOREST BOUNDARY
- NATIONAL, STATE OR PROVINCE LINE
- COUNTY LINE
- ALIENATED LANDS (PRIVATE, PATENTED MINING CLAIMS, STATE OR NATIONAL PARKS AND MONUMENTS, INDIAN RESERVATIONS, ETC.)
- WITHDRAWALS EXCEPT E.O. 10330
- E.O. 10330 WITHDRAWALS

The exterior boundary of Weminuche Wilderness, Rio Grande and San Juan National Forests, Rocky Mountain Region, May 1981, as added to the National Wilderness Preservation System by Public Law 93-432 1/3/75 and as amended by Public Law 96-560 12/22/80.



Maped, edited, and published by the Geological Survey  
Control by USGS, NGS/NOAA and U. S. Forest Service  
Topography by photogrammetric methods from aerial  
photographs taken 1972. Field checked 1973  
Projection and 10,000-foot grid ticks. Colorado  
coordinate system, south zone (Lambert conformal conic)  
1000-meter Universal Transverse Mercator grid ticks,  
zone 13, shown in blue. 1927 North American datum.  
Where omitted, land (in blue) has not been established  
or is not shown because of insufficient data.



SCALE 1:24,000  
CONTOUR INTERVAL 40 FEET  
NATIONAL GEODESIC VERTICAL DATUM OF 1929



ROAD CLASSIFICATION  
Trails  
*Quad 17*  
EMERALD LAKE, COLO.  
N3730-W10222.5/7.5  
1973  
AND 4500 III SW - DENVER 9877

THIS MAP COMPLEYS WITH NATIONAL MAP ACCURACY STANDARDS  
FOR SALE BY U.S. GEOLOGICAL SURVEY, DENVER, COLORADO 80202, OR WESTON VIRGINIA 22090  
A TOUGH DESCRIBING TOPOGRAPHIC MAP AND SYMBOLS IS AVAILABLE ON REQUEST

USDA FOREST SERVICE  
Rocky Mountain Region  
RIO GRANDE and SAN JUAN NATIONAL FORESTS  
COLORADO  
**WEMINUCHE WILDERNESS**

LEGEND

- WILDERNESS BOUNDARY
- FOREST BOUNDARY
- NATIONAL, STATE OR PROVINCE LINE
- COUNTY LINE
- ALLOCATED LANDS (PRIVATE, INTENDED MINING CLAIMS, STATE OR NATIONAL PARKS AND MONUMENTS, INDIAN RESERVATIONS, ETC.)
- WITHDRAWALS EXCEPT E.O. 10335
- E.O. 10335 WITHDRAWALS

The exterior boundary of Weminuche Wilderness, Rio Grande and San Juan National Forests, Rocky Mountain Region, May 1981, as added to the National Wilderness Preservation System by Public Law 93-632, 1/3/75 and as amended by Public Law 96-560, 12/22/80.

Map prepared, edited, and published by the Geological Survey  
under the direction of the Director  
Topographic maps published by the Geological Survey  
under the direction of the Director  
The maps are published by the Geological Survey  
under the direction of the Director  
The maps are published by the Geological Survey  
under the direction of the Director

SCALE 1:62,500

UNITED STATES GEOLOGICAL SURVEY

THIS MAP IS A REPRODUCTION OF THE ORIGINAL MAP  
PUBLISHED BY THE GEOLOGICAL SURVEY OF THE UNITED STATES  
IN 1975. IT IS A REPRODUCTION OF THE ORIGINAL MAP  
PUBLISHED BY THE GEOLOGICAL SURVEY OF THE UNITED STATES  
IN 1975.

ROAD CLASSIFICATION  
Light duty road  
Heavy duty road  
Unimproved road  
Unimproved road  
Unimproved road

COLUMBINE PASS, COLO.  
1:62,500 (1:62,500 1:62,500)  
1975



ROAD CLASSIFICATION

Primary highway \_\_\_\_\_ Light-duty road, hard or  
hard surface \_\_\_\_\_ improved surface \_\_\_\_\_

Secondary highway \_\_\_\_\_ Unimproved road \_\_\_\_\_

hard surface \_\_\_\_\_

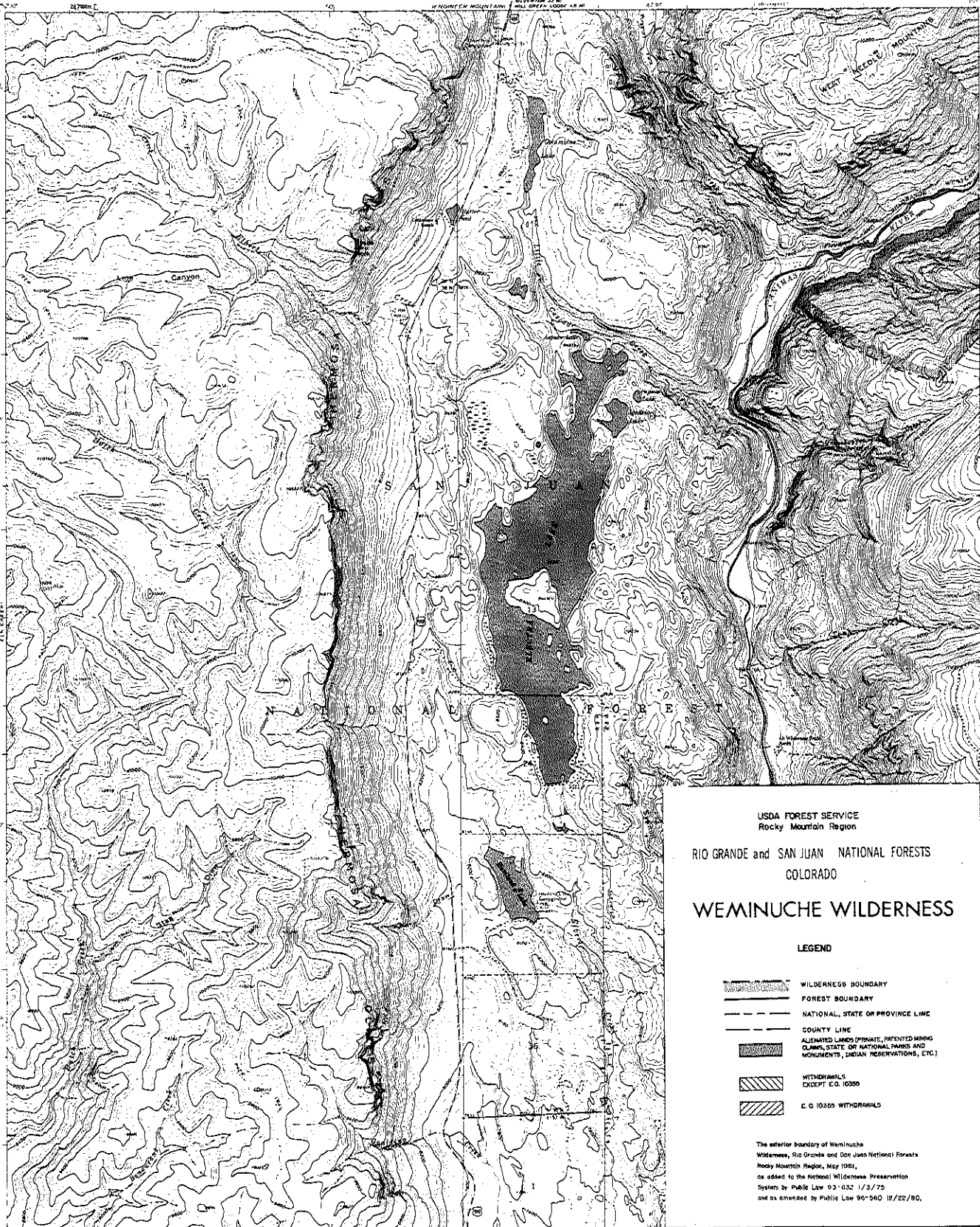
Interstate Route ☐ U.S. Route ☐ State Route ☐

COLORADO

QUADRANGLE LOCATION

MOUNTAIN VIEW CREST, COLO.  
as a BEEHIVE MAP OF THE QUADRANGLE  
N4710-W18737-5-7.5





Maped, edited, and published by the Geological Survey

Topographic data by photogrammetric methods from aerial photographs taken 1956-60, scale 1:62,500.  
Hydrology by the U.S. Army Corps of Engineers, 1957, from aerial photographs taken 1956-60, scale 1:62,500.  
Elevation by the U.S. Army Corps of Engineers, 1957, from aerial photographs taken 1956-60, scale 1:62,500.  
Cultural features by the U.S. Army Corps of Engineers, 1957, from aerial photographs taken 1956-60, scale 1:62,500.

SCALE 1:62,500  
1 inch = 1 mile  
1 centimeter = 400 feet  
1 kilometer = 0.625 mile  
1 meter = 3.28 feet  
1 foot = 0.305 meter  
1 mile = 1.609 kilometers  
1 kilometer = 0.625 miles  
1 meter = 3.28 feet  
1 foot = 0.305 meter  
1 mile = 1.609 kilometers  
1 kilometer = 0.625 miles

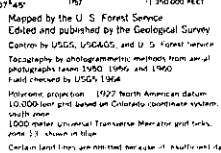
ROAD CLASSIFICATION  
Major road  
Minor road  
Unimproved road  
U.S. Road

FOR SALE BY U.S. GEOLOGICAL SURVEY, DENVER 25, COLORADO OR WASHINGTON 25, D.C.  
A FOLDER CONTAINING TOPOGRAPHIC MAPS AND TOWNSHIP 15 IS AVAILABLE ON REQUEST

ELECTRA LAKE, COLO.

1980

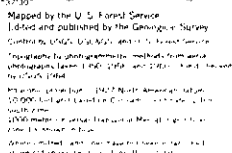


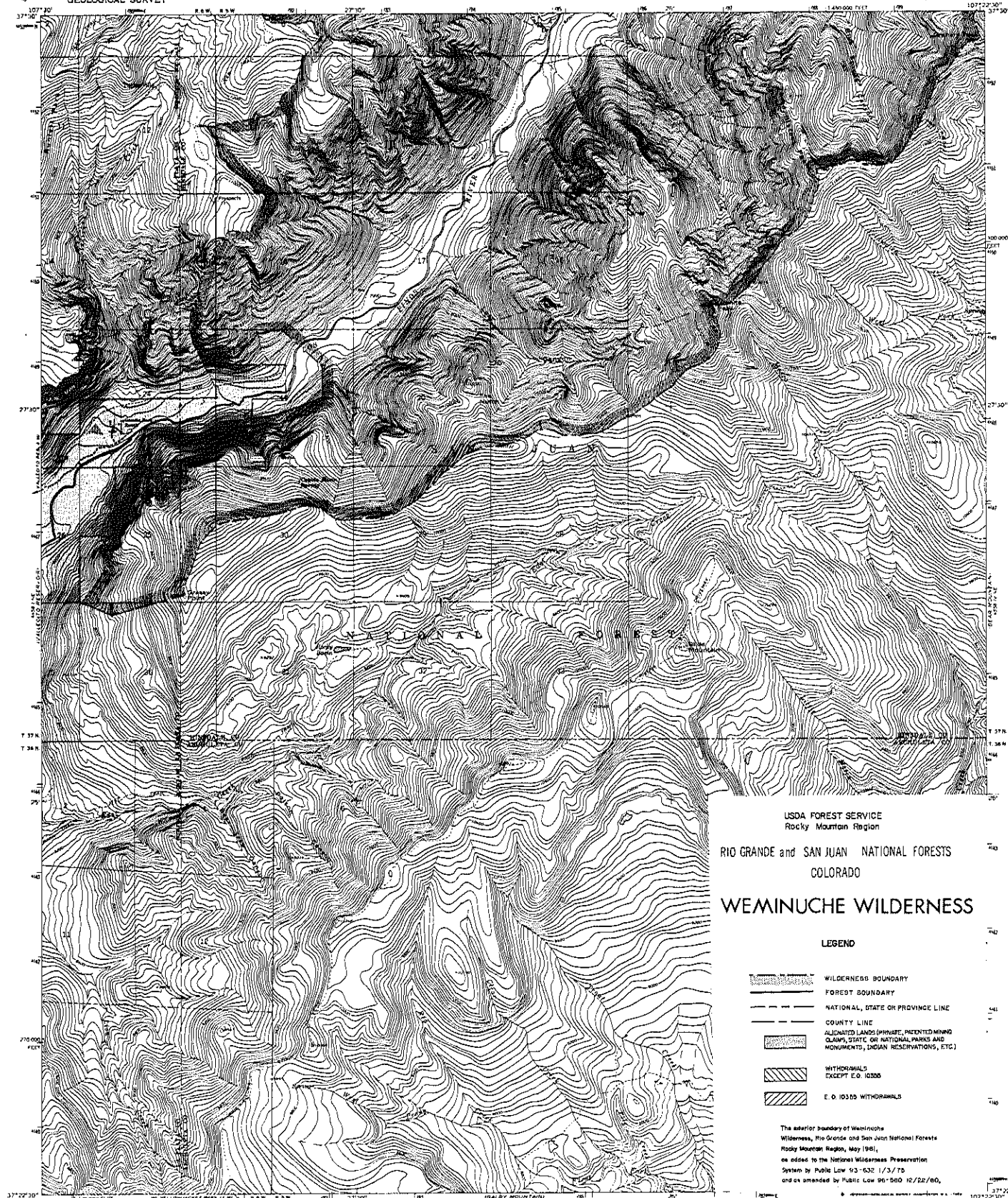


FOR SALE BY U. S. GEOLOGICAL SURVEY, DENVER, COLORADO 80226, OR WASHINGTON, D. C. 20242  
A FOLDER DESCRIBING TOPOGRAPHIC MAPS AND SYMBOLS IS AVAILABLE ON REQUEST

LEMON RESERVOIR, COLO.  
N:17.2° N - W:107.17° N - 7° N  
1904

ANT. 4479 : NW - 503160, V877





USDA FOREST SERVICE  
Rocky Mountain Region

RIO GRANDE and SAN JUAN NATIONAL FORESTS  
COLORADO

WEMINUCHE WILDERNESS

LEGEND

- WILDERNESS BOUNDARY
- FOREST BOUNDARY
- NATIONAL, STATE OR PROVINCE LINE
- COUNTY LINE
- QUADS (PRIVATE, PATENTED MINING CLAIMS, STATE OR NATIONAL PARKS AND MONUMENTS, INDIAN RESERVATIONS, ETC.)
- WITHDRAWALS EXCEPT E.O. 10335
- E.O. 10335 WITHDRAWALS

The exterior boundary of Weminuche Wilderness, Rio Grande and San Juan National Forests, Rocky Mountain Region, May 1961, as added to the National Wilderness Preservation System by Public Law 83-632 1/3/78 and as amended by Public Law 96-580 12/22/80.

ROAD CLASSIFICATION  
Unimproved dirt



GRANITE PEAK, COLO.

43122 N. - W31022 E. - 7.5

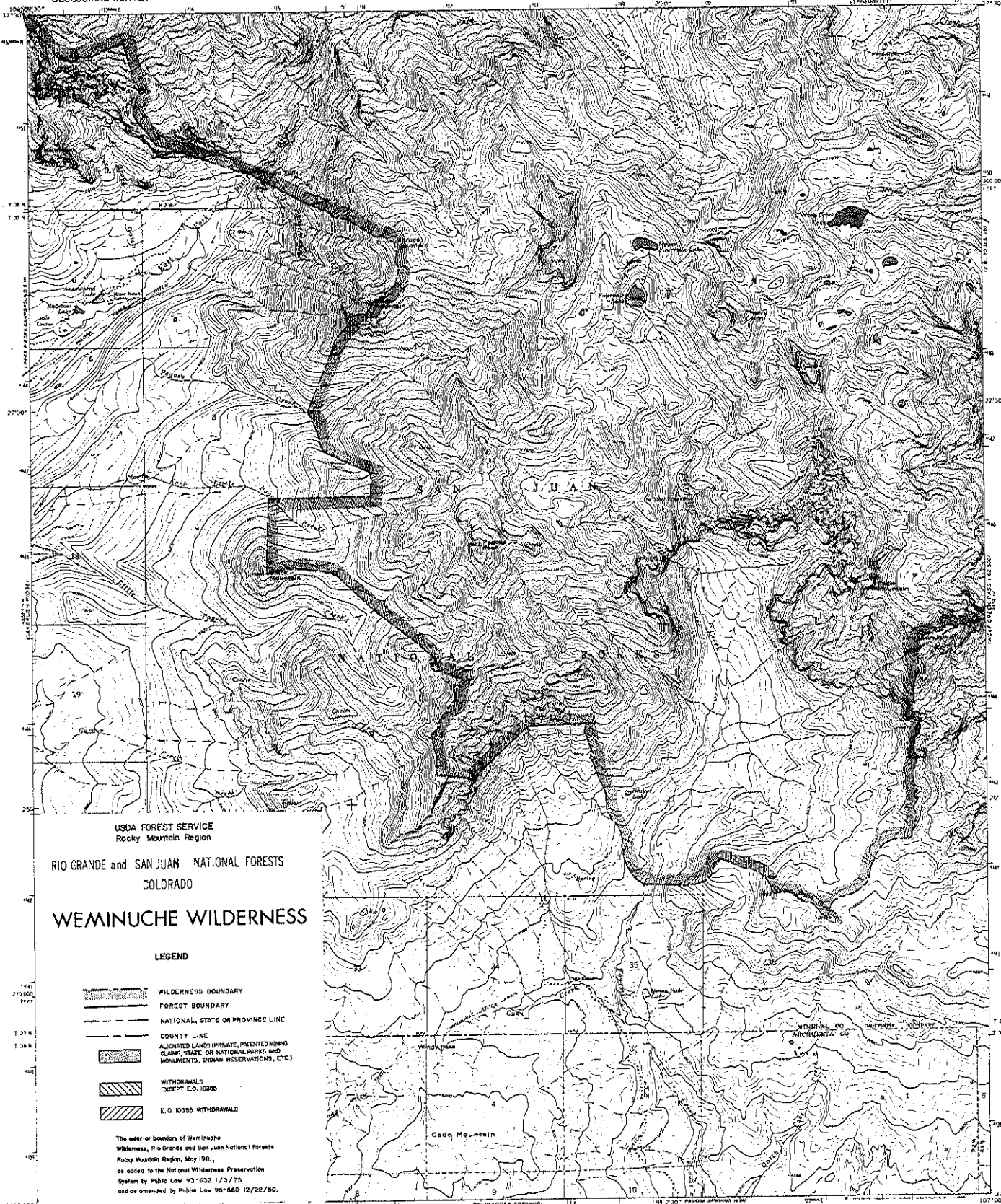
1964

ANK 454 14 NW SEVEN 5417

Map by the U. S. Forest Service  
Edited and published by the Geological Survey  
Control by USGS, USFWS, and U. S. Forest Service  
Topography by photogrammetric methods from aerial  
photographs taken 1960 and 1961. Field checked  
by USGS 1964.  
Projection: projection, 1927 North American datum  
10,000-foot grid based on Colorado coordinate system  
south zone  
1000-meter Universal Transverse Mercator grid ticks,  
zone 13 shown in blue  
Certain land uses are omitted because of insufficient data

FOR SALE BY U. S. GEOLOGICAL SURVEY, DENVER, COLORADO 80272, OR WASHINGTON, D. C. 20242  
A FOLDER DESCRIBING TOPOGRAPHIC MAPS AND SYMBOLS IS AVAILABLE ON REQUEST





USDA FOREST SERVICE  
Rocky Mountain Region

RIO GRANDE and SAN JUAN NATIONAL FORESTS  
COLORADO

**WEMINUICHE WILDERNESS**

**LEGEND**

- WILDERNESS BOUNDARY
- FOREST BOUNDARY
- NATIONAL, STATE OR PROVINCE LINE
- COUNTY LINE
- ALIENATED LANDS (PRIVATE, PRECEDENT MINING CLAIMS, STATE OR NATIONAL PARKS AND MONUMENTS, INDIAN RESERVATIONS, ETC.)
- WITHDRAWALS EXCEPT E.O. 10355
- E.O. 10355 WITHDRAWALS

The exterior boundary of Weminuche Wilderness, Rio Grande and San Juan National Forests Rocky Mountain Region, May 1961, as added to the National Wilderness Preservation System by Public Law 86-622 11/3/79, and as amended by Public Law 96-580 12/22/80.

Map by the U. S. Forest Service  
Edited and published by the Geological Survey  
Control by USGS, USGARS and U. S. Forest Service  
Topography by photogrammetric methods from aerial photographs taken 1950 and 1960. Field checked by USGS 1964.

Projection: projection 1927 North American datum  
10,000 feet grid based on Colorado quadrant system  
Scale: 1:250,000  
1:50,000 meter Universal Transverse Mercator and 1:50,000 feet 1:50,000 meter datum  
Certain land areas are omitted because of insufficient data

SCALE 1:250,000  
CONTOUR INTERVAL 40 FEET  
DATUM: 1927 NORTH AMERICAN DATUM  
MEAN SEA LEVEL



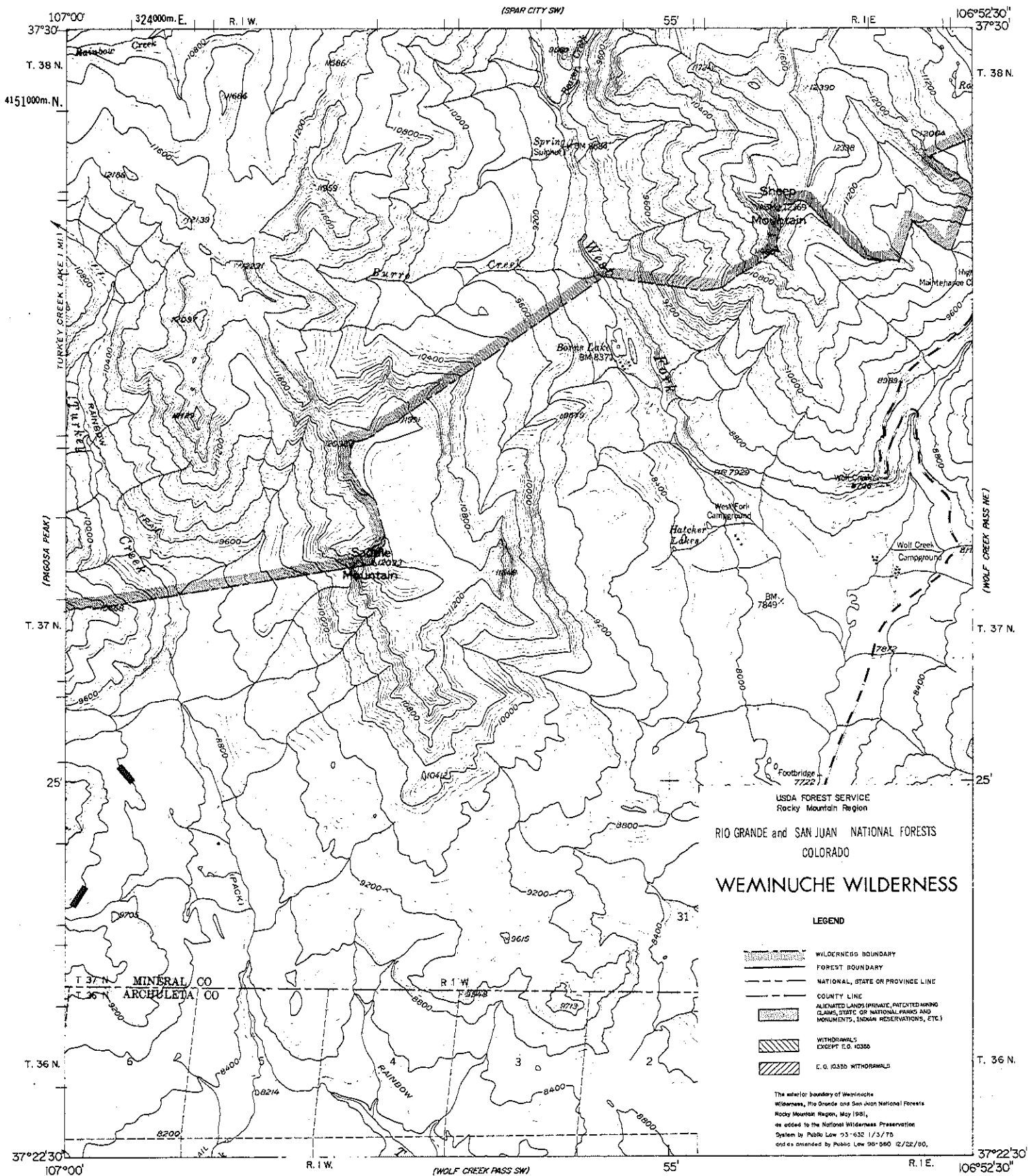
ROAD CLASSIFICATION  
Unimproved dirt

PACOSA PEAK, COLO.  
N 17° 27' - 18° 00' W 107° 00' - 107° 30'

FOR SALE BY U. S. GEOLOGICAL SURVEY, DENVER, COLORADO 80225, OR WASHINGTON, D. C. 20542  
A FOLDER DESCRIBING TOPOGRAPHIC MAPS AND SYMBOLS IS AVAILABLE ON REQUEST

1964  
AMERICAN SERIES 9817





WOLF CREEK PASS NW, COLO.

1957

