

Scale 1:24,000
CONTOUR INTERVAL 40 FEET
DATUM IS MEAN SEA LEVEL

LEGEND

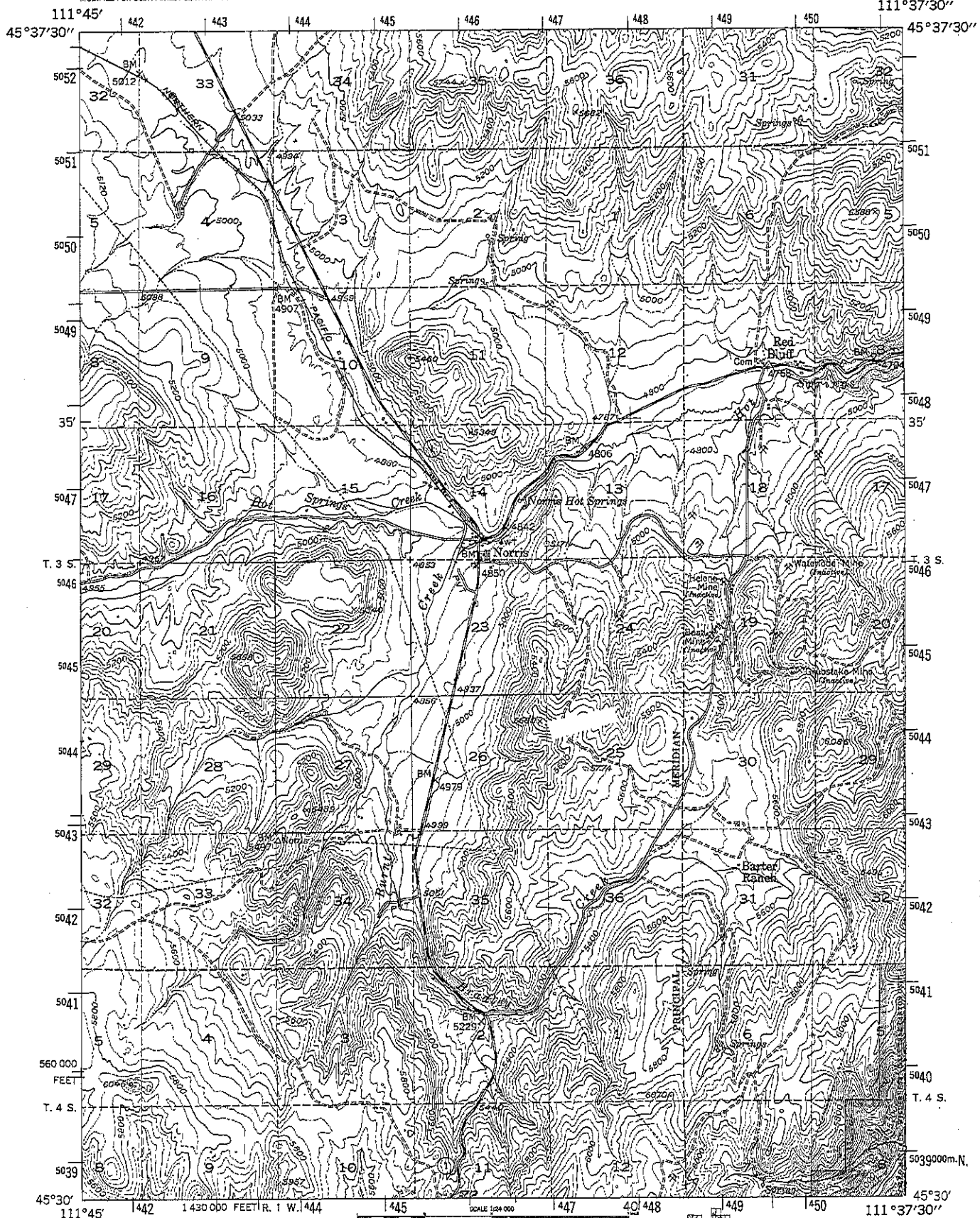
— National Forest Boundary	— Primary Highway	— Interstate Highway
— Allotment Land within the National Forest Boundary	— Secondary Highway	— U.S. Highway
— Township and Section Line Classification	— Light Duty Road	— State Highway
— Surveyed, Location Available	— Provision Road	— County Road
— Surveyed, Location Approximate	— Trail	— Forest Road
— Unsurveyed, Proposed	— Gate	— Forest Trail

INTERMEDIATE EDITION

Map is based on 1:250,000 scale map by the Geographical Names Board, 1972. Contour lines derived from 1:250,000 scale map by the Geographical Names Board, 1972. Contour lines derived from 1:250,000 scale map by the Geographical Names Board, 1972. Contour lines derived from 1:250,000 scale map by the Geographical Names Board, 1972.

DEPARTMENT OF THE INTERIOR
BUREAU OF LAND MANAGEMENT
NORRIS SE, MONT.
N4530-W11120/7.5
1997

1



Date map prepared by the U.S. Geological Survey
Stereo compilation by Fairchild Aerial Surveys, Inc.
for the Bureau of Reclamation
Field examination and publication by the Geological Survey
as part of the Department of the Interior program
for the development of the Missouri River Basin
Control by USGS and USGS-25

Topographic from aerial photographs by stereoplotters
method 1946 Aerial photographs taken 1947, Field check 1950
Polyconic projection, 1927 North American datum
30,000-foot and based on Montana coordinate system,
south zone
1000-meter Universal Transverse Mercator grid ticks,
zone 12

INTERMEDIATE EDITION

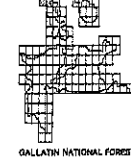
This map does not meet accuracy standards

National Forest Boundary
Allotted Land within the
National Forest Boundary
TOWNSHIP AND SECTION LINE CLASSIFICATION
Surveyed, Location Reliable
Surveyed, Location Unreliable
Unsurveyed, USM Projection

CONTOUR INTERVAL, 40 FEET
DATUM IS MEAN SEA LEVEL

LEGEND
Primary Highway
Secondary Highway
Light Duty Road
Primitive Road
Trail

Interstate
U.S. Highway
State Highway
County Highway
Forest Road
Forest Trail



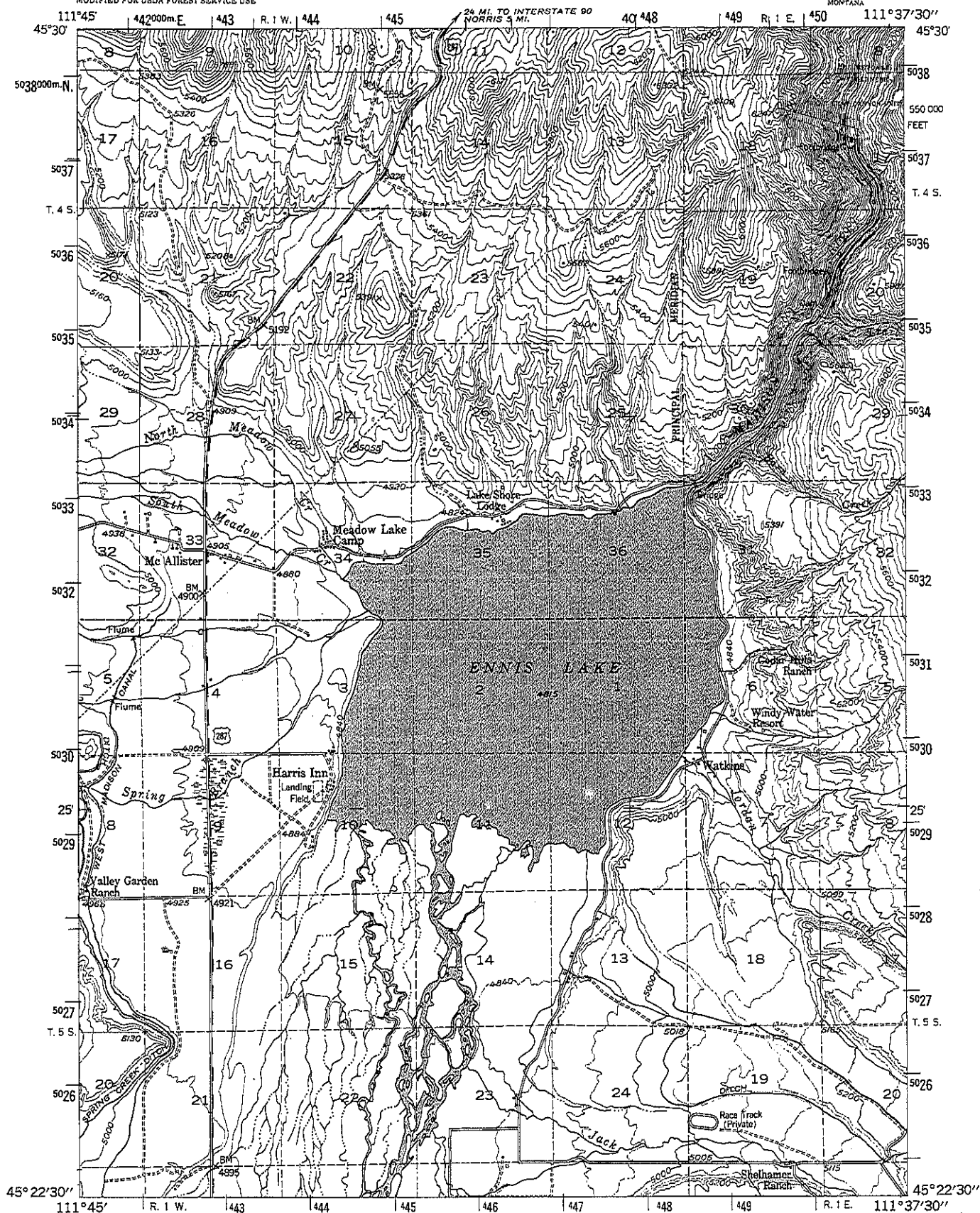
NORRIS S.W. MONTANA
1950- 111157.2/7.3

511-24-3

UNITED STATES
DEPARTMENT OF THE INTERIOR
GEOLOGICAL SURVEY
MODIFIED FOR USDA FOREST SERVICE USE

ENNIS N.W., QUADRANGLE

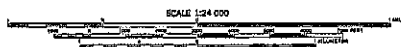
MONTANA



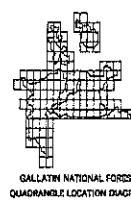
Date map prepared by the U.S. Geological Survey
Stereo compilation by Fairchild Aerial Surveys, Inc.
for the Bureau of Reclamation
Field examination and publication by the Geological Survey
as part of the Department of the Interior program
for the development of the Missouri River Basin
Control by USGS and USFWS

Topography from aerial photographs by stereographic
methods 1948. Aerial photographs taken 1947. Field check 1950
Polyconic projection. 1927 North American datum
10,000-foot grid based on Montana coordinate system;
south zone
3000-meter Universal Transverse Mercator grid lines,
zone 12

INTERMEDIATE EDITION
This map does not meet accuracy standards



- | | | |
|--|--|--|
| <ul style="list-style-type: none"> National Forest Boundary Allotment Land within the National Forest Boundary TOWNSHIP AND SECTION LINE CLASSIFICATION Surveyed, Location Reliable Surveyed, Location Unreliable Unsurveyed, BLM Protection | <p>LEGEND</p> <ul style="list-style-type: none"> Primary Highway Secondary Highway Light Duty Road Primitive Road Trail | <ul style="list-style-type: none"> Interstate U.S. Highway State Highway County Highway Forest Road Forest Trail |
|--|--|--|



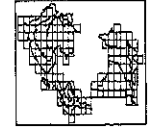
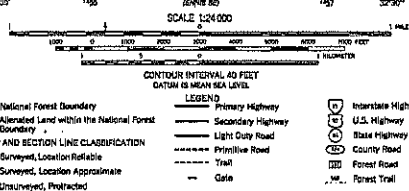
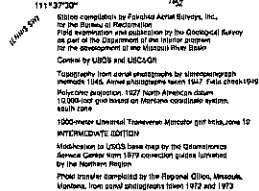
ENNIS N.W., MONTANA

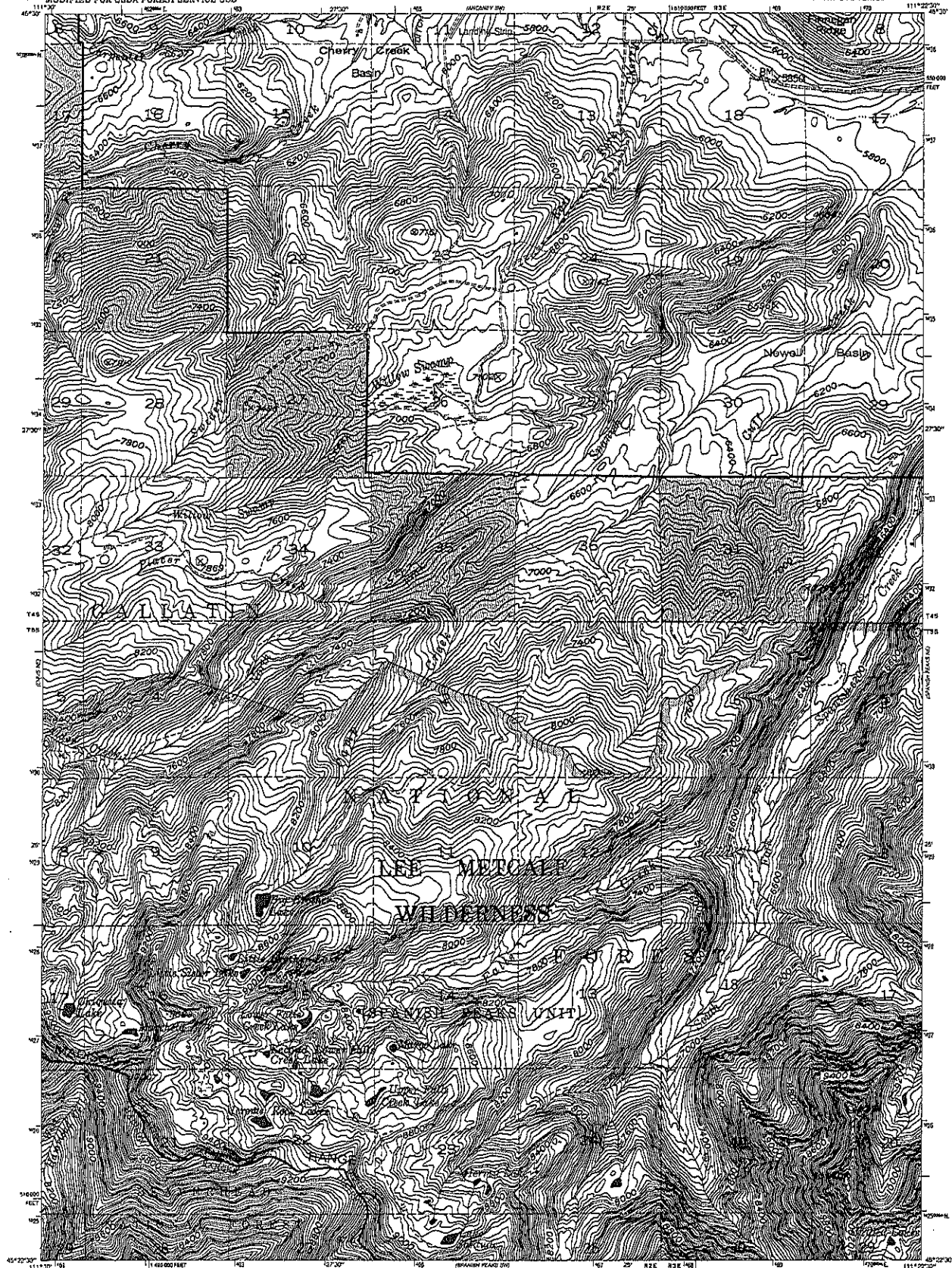
MADE BY: W11137.17.3

1948

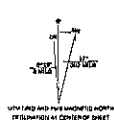
511.3-1.3

3





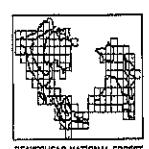
Based on compilation by Regional Aerial Survey, Inc.
for the Bureau of Reclamation.
Field examination and compilation by the Geological Survey
as part of the Geomorphological Survey of the western portion
of the watershed of the Missouri River Basin.
Compiled by USGS and USGS/OS.
Topographic from aerial photographs by stereoplotting.
Aerial photo, Aerial photographs taken 1947. Photo scale 1:60,000.
Produced by USGS and USGS/OS.
1000-meter Universal Transverse Mercator grid, zone 12
INTERMEDIATE EDITION
Established in 1950 based on the Geomorphological
Survey data from 1947. Photo scale 1:60,000.
Produced by USGS and USGS/OS.
Photo transfer compiled by the Regional Office, Madison,
Montana, from aerial photographs taken 1972 and 1973.
Legend revised according to additional Forest Service evidence.



SCALE 1:24,000
CONTOUR INTERVAL 40 FEET
DATUM IS MEAN SEA LEVEL

LEGEND

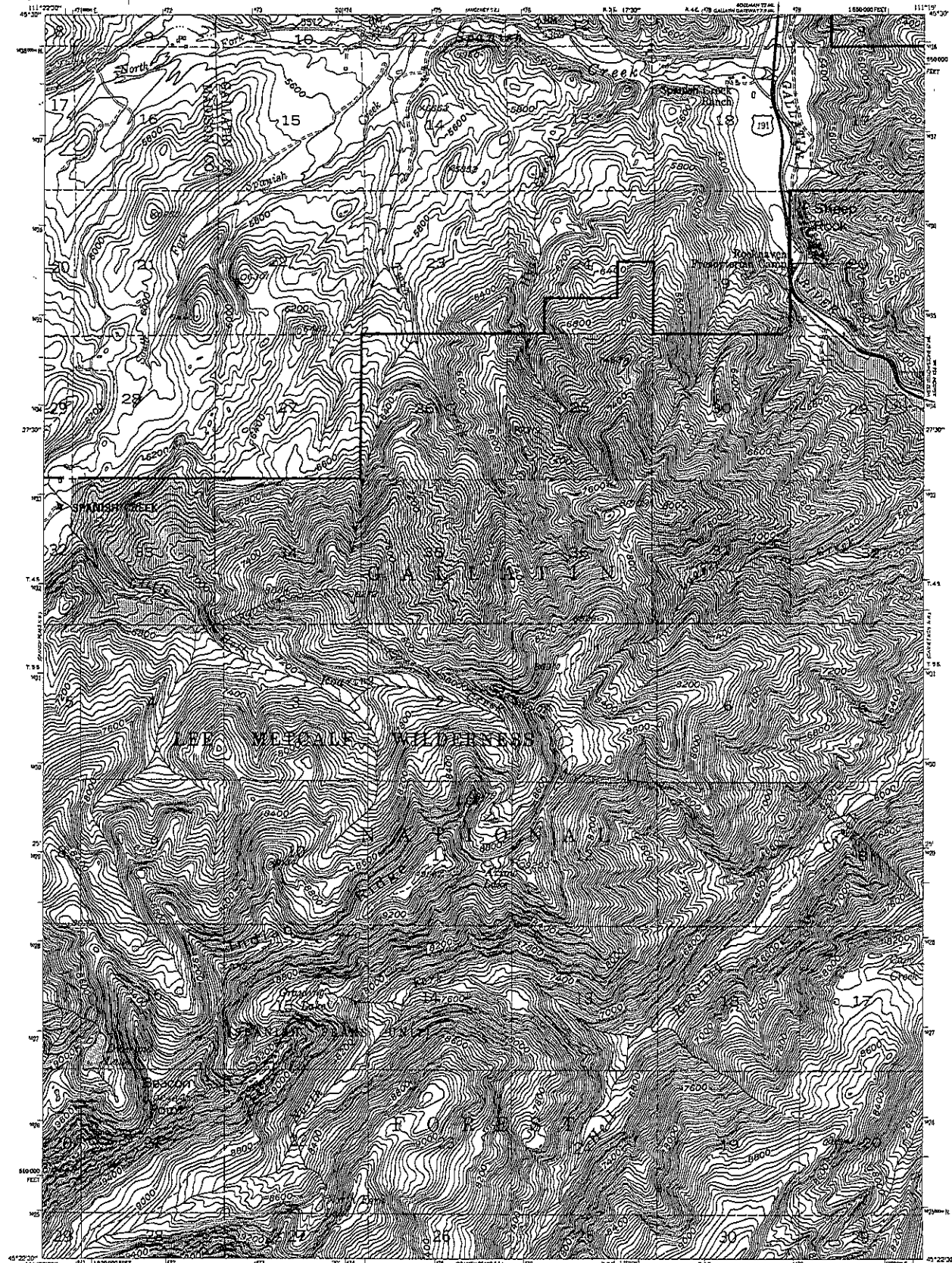
— National Forest Boundary	— Primary Highway	— Interstate Highway
— Allotment Land within the National Forest	— Secondary Highway	— U.S. Highway
— Township and Section Line Classification	— Light Duty Road	— State Highway
— Surveyed Location (Reliable)	— Primitive Road	— County Road
— Surveyed Location (Approximate)	— Trail	— Forest Road
— Unsurveyed, Probable	— Gate	— Forest Trail



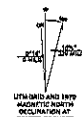
SPANISH PEAKS NW, MONT.
14522.5—14112.5/7.5
1:24,000

UNITED STATES
DEPARTMENT OF THE INTERIOR
GEOLOGICAL SURVEY
MODIFIED FOR USDA FOREST SERVICE USE

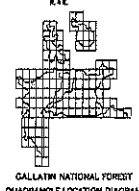
SPANISH PEAKS N.E. QUADRANGLE
MONTANA
7.5 MINUTE SERIES



Scale map prepared by the U.S. Geological Survey
Steno compilation by Fairchild Aerial Surveys, Inc.
for the Bureau of Reclamation
Field examination and publication by the Geological Survey
as part of the Department of the Interior program
for the development of the Missouri River Basin
Control by USGS and USGARS
Topography from aerial photographs by stereoplantameth
method, 1945. Aerial photographs taken 1947. Field check 1960
Photocopy projection, 1922 North American datum
10,000-foot grid based on Montana coordinate system,
south zone
1000-meter Universal Transverse Mercator and Sika,
zone 12, shown in blue
INTERMEDIATE EDITION
Modifications to USGS base map by the Geomorphics Service
Center from 1979 correction guides furnished by the
Northern Region.
Photo transfer completed by the Regional Office Missoula,
Montana from aerial photographs taken 1972 and 1975.



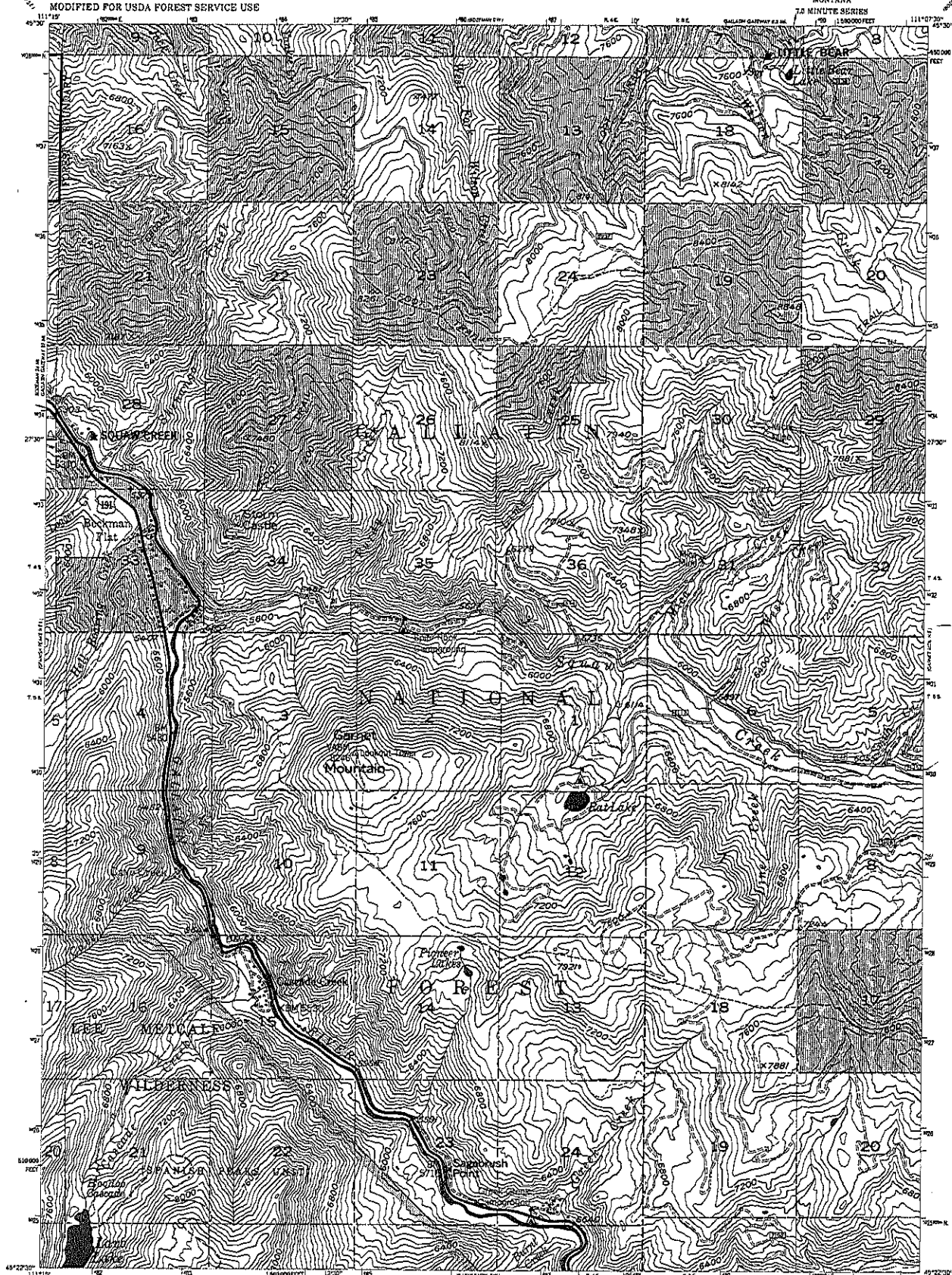
- CONTOUR INTERVAL 40 FEET
DATUM IS MEAN SEA LEVEL
- LEGEND
- | | | |
|--|-------------------------|----------------------|
| ----- National Forest Boundary | ----- Primary Highway | ----- Interstate |
| ----- Allotment Land within the National Forest Boundary | ----- Secondary Highway | ----- U.S. Highway |
| ----- Township and Section Line Classification | ----- Light Duty Road | ----- State Highway |
| ----- Surveyed, Location Reliable | ----- Primitive Road | ----- County Highway |
| ----- Surveyed, Location Unreliable | ----- Trail | ----- Forest Road |
| ----- Unsurveyed, BLM Protection | | ----- Forest Trail |



SPANISH PEAKS N.E., MONTANA
14413--11115/7.5
1950

UNITED STATES
DEPARTMENT OF THE INTERIOR
GEOLOGICAL SURVEY
MODIFIED FOR USDA FOREST SERVICE USE

GARNET MOUNTAIN N.W. QUADRANGLE
MONTANA
7.5 MINUTE SERIES



Base map prepared by the U.S. Geological Survey as part of the Department of the Interior program for the development of the Missouri River Basin. Control by USGS and USGAS.

Topography from aerial photographs by stereoplotting methods 1948 for the Bureau of Reclamation and by multiple methods 1954 by USGS.

Aerial photographs taken 1947 and 1949. Field check 1955.

Photocopy projection, 1927 North American datum. USGS top and based on Montana coordinate system, south zone.

1000-meter Universal Transverse Mercator grid ticks, zone 12, shown in blue.

INTERMEDIATE EDITION

Modifications to USGS base map by the Geomorphology Service Center from 1979 correction guides furnished by the Northern Region.

Photo transfer compiled by the Regional Office Missoula, Montana from aerial photographs taken 1972 and 1975.



CONTOUR INTERVAL 80 FEET
DATUM: N. MEAN SEA LEVEL

LEGEND

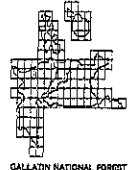
— National Forest Boundary
— Alienated Land within the National Forest Boundary

TOWNSHIP AND SECTION LINE CLASSIFICATION

— Surveyed, Location Reliable
- - - Surveyed, Location Unreliable
- - - - - Unsurveyed, BLM Projection

— Primary Highway
— Secondary Highway
— Light Duty Road
- - - Primitive Road
- - - - - Trail

— Interstate
— U.S. Highway
— State Highway
— County Highway
— Forest Road
— Forest Trail

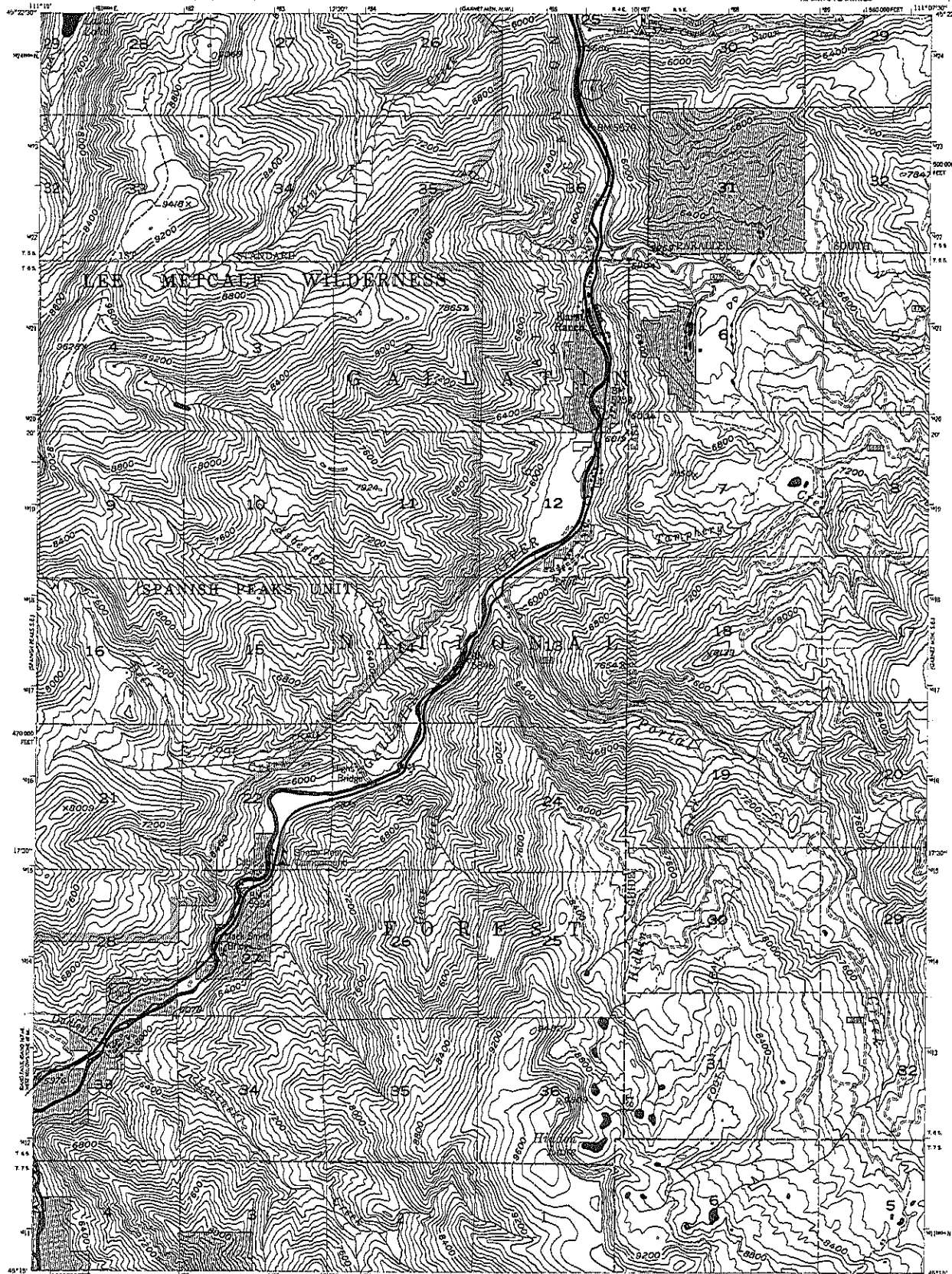


GARNET MOUNTAIN N.W.
MONTANA
M4222-911427.5/7.5

1985
7

UNITED STATES
DEPARTMENT OF THE INTERIOR
GEOLOGICAL SURVEY
MODIFIED FOR USDA FOREST SERVICE USE

GARNET MOUNTAIN S.W. QUADRANGLE
MONTANA
7.5 MINUTE SERIES



Base map prepared by the U.S. Geological Survey as part of the Department of the Interior program for the development of the Missouri River Basin Control by USGS and USFS.

Topography from aerial photographs by stereoplotting methods 1946 for the Bureau of Reclamation and by multiple methods 1954 by USGS.

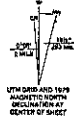
Aerial photographs taken 1947 and 1948. Field check 1950.

Photocopy projection, 1927 North American datum 10,000-foot grid based on Montana coordinate system, south zone.

1000-meter Universal Transverse Mercator grid ticks, zone 12, shown in blue.

INTERMEDIATE EDITION
Modifications to USGS base map by the Geosynthetic Service Center from 1979 correction guides furnished by the Northern Region.

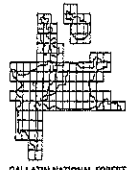
Photo transfer completed by the Regional Office Missoula, Montana from aerial photographs taken 1972 and 1976.



SCALE 1:64,000

CONTOUR INTERVAL 80 FEET
DATUM IS MEAN SEA LEVEL

- LEGEND**
- National Forest Boundary
 - Alternate Land within the National Forest Boundary
 - TOWNSHIP AND SECTION LINE CLASSIFICATION
 - Surveyed, Location Reliable
 - Surveyed, Location Unreliable
 - Unsurveyed, D.M. Protection
 - Primary Highway
 - Secondary Highway
 - Light Duty Road
 - Primitive Road
 - Trail
 - Interstate
 - U.S. Highway
 - State Highway
 - County Highway
 - Forest Road
 - Forest Trail

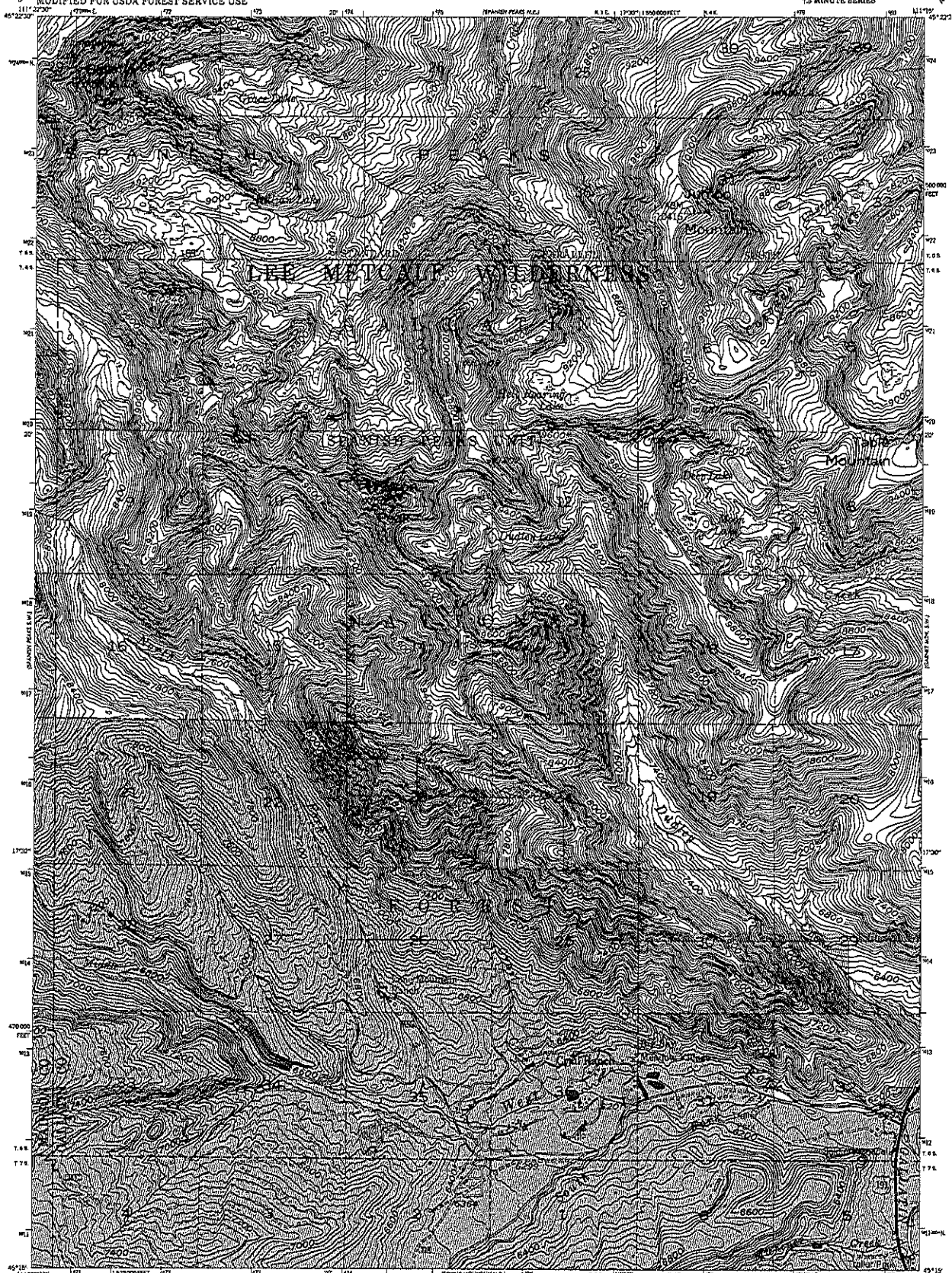


GARNET MOUNTAIN S.W.
MONTANA
NAD83-PLUS/UTM/7.5

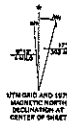
1955
8

UNITED STATES
DEPARTMENT OF THE INTERIOR
GEOLOGICAL SURVEY
MODIFIED FOR USDA FOREST SERVICE USE

SPANISH PEAKS S.E. QUADRANGLE
MONTANA
7.5 MINUTE SERIES



Base map prepared by the U.S. Geological Survey
Stereos compilation by Fairchild Aerial Surveys, Inc.
for the Bureau of Reclamation
Field examination and publication by the Geological Survey
as part of the Department of the Interior program
for the development of the Missouri River Basin
Control by USGS and USGARS
Topography from aerial photographs by stereoplotting
methods 1945. Aerial photographs taken 1947. Field check 1950
Polyconic projection, 1927 North American datum
1:50,000-foot grid based on Montana coordinate system,
south zone
100-meter Universal Transverse Mercator grid ticks
INTERMEDIATE EDITION
Modifications to USGS base map by the Geomatrix Service
Center from 1979 correction glides furnished by the
Northern Region
Photo transfer compiled by the Regional Office Missoula,
Montana from aerial photographs taken 1972 and 1976.

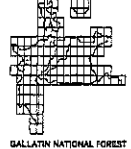


CONTOUR INTERVAL 40 FEET
DATUM IS MEAN SEA LEVEL

LEGEND

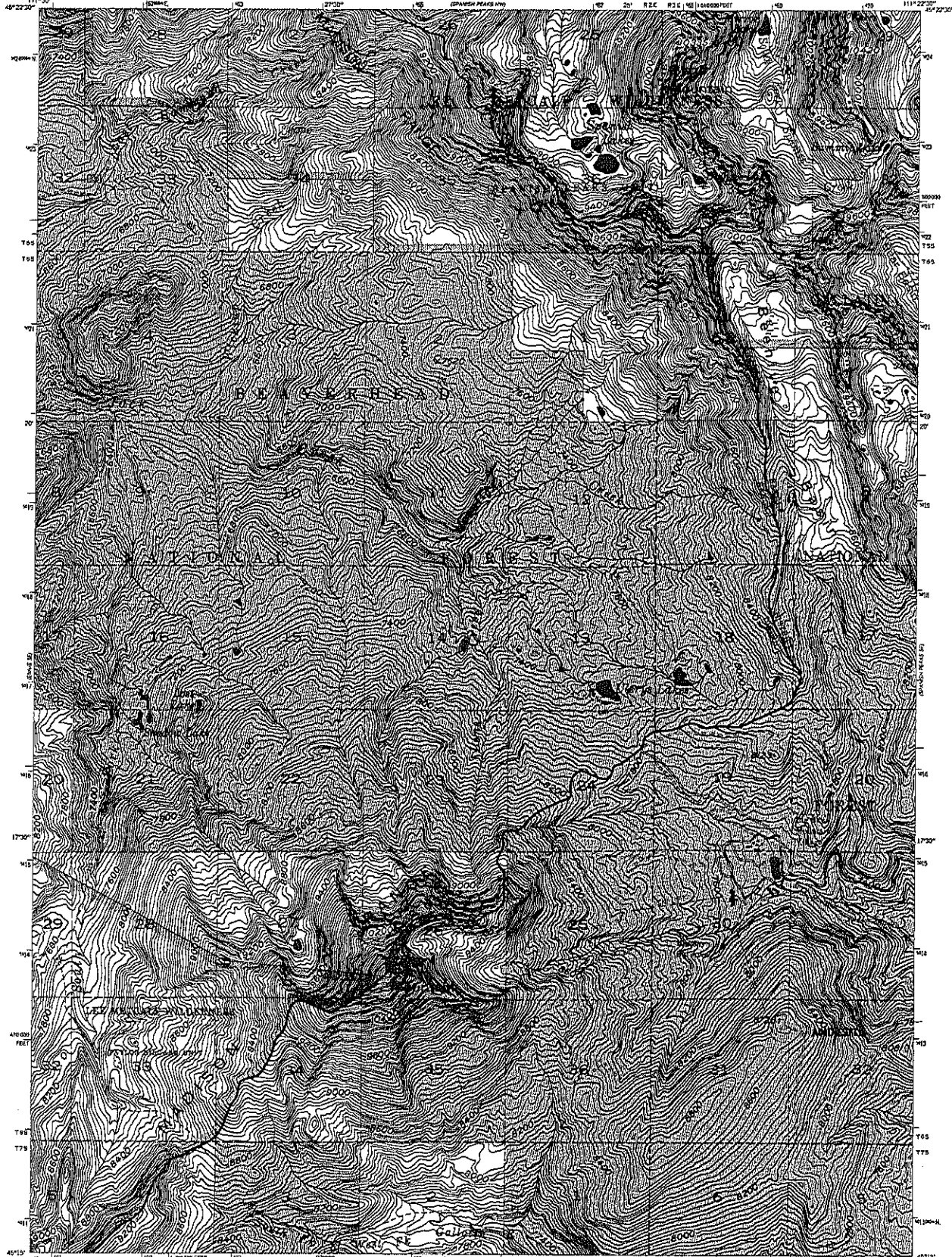
— National Forest Boundary	— Primary Highway	— Interstate
— Altered Land within the National Forest Boundary	— Secondary Highway	— U.S. Highway
TOWNSHIP AND SECTION LINE CLASSIFICATION	— Light Duty Road	— State Highway
— Surveyed, Location Reliable	— Primitive Road	— County Highway
— Surveyed, Location Unreliable	— Trail	— Forest Road
— Unsurveyed, D.M. Protection		— Forest Trail

— Interstate
— U.S. Highway
— State Highway
— County Highway
— Forest Road
— Forest Trail



SPANISH PEAKS S.E. MONTANA
NAD 83—WILLIS 7/5

1990
9



Spanish Peaks SW, Mont.
for the Bureau of Reclamation
Land acquisition and construction by the Geological Survey
as part of the Colorado River project at the upper portion
of the Colorado River at the lower portion of the map
Control by USGS and USFWS

Topographic work and photographs by the Geological Survey
Reclamation, 1937. Aerial photographs taken 1937. Photo check 1950

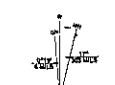
Photocopy produced, 1957. North American datum
National grid based on Montana coordinate system,
zone 12

1000-meter Universal Transverse Mercator grid, zone 12
INTERPOLATED EDITION

Adaptation to USGS base map by the Geological Survey
Reclamation Center from 1937. Correction guide furnished
by the National Survey

Photo transfer completed by the Regional Office, Seattle,
Montana from aerial photographs taken 1937 and 1957

Letterhead revised according to additional Forest Service instructions

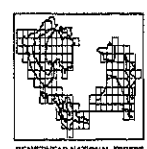


SCALE 1:240,000

CONTOUR INTERVAL 40 FEET
BATHY IS MEAN SEA LEVEL

LEGEND

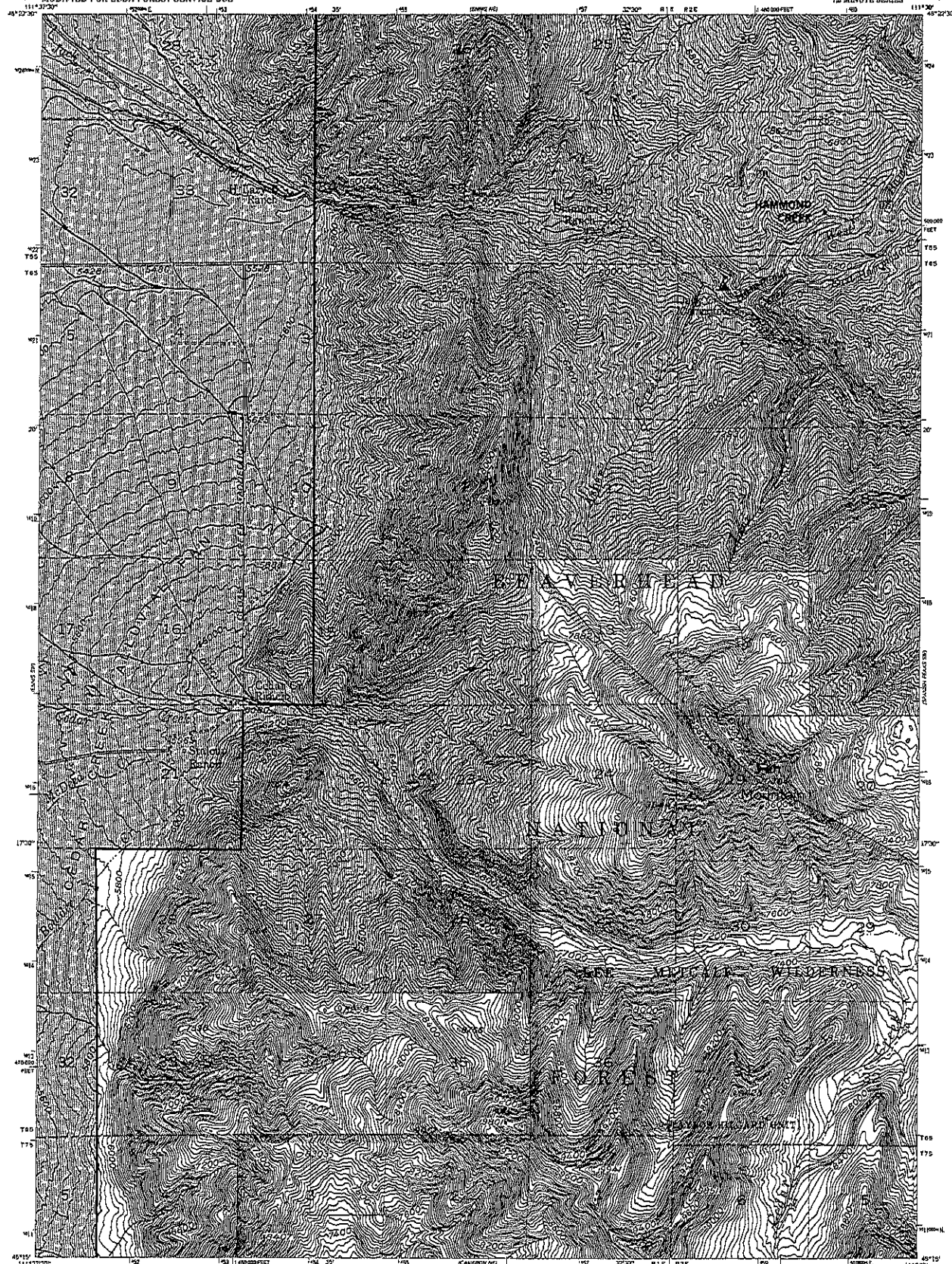
— National Forest Boundary	— Primary Highway	— Interstate Highway
— Alienated Land within the National Forest Boundary	— Secondary Highway	— U.S. Highway
— Township and Section Line Classification	— Link Duty Road	— State Highway
— Surveyed, Location Reliable	— Primitive Road	— County Road
— Surveyed, Location Approximate	— Trail	— Forest Road
— Unsurveyed, Protected	— Gate	— Forest Trail



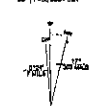
SPANISH PEAKS SW, MONT.
MAD15-W11122.5/7.5
1950

UNITED STATES
DEPARTMENT OF THE INTERIOR
GEOLOGICAL SURVEY
MODIFIED FOR USDA FOREST SERVICE USE

ENNIS SE QUADRANGLE
MONTANA-MADISON CO.
7.5 MINUTE SERIES

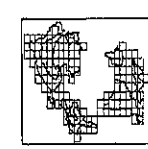


Source: compilation by National Aerial Survey, Inc., for the Bureau of Reclamation. Field verification and control by the Geological Survey as part of the Department of the Interior program for the development of the National Forest System. Control by USGS and USFS. Topography from aerial photographs by stereoreduction methods 1945. Aerial photography taken 1947. Field work 1949. Projection: projection, 1927 North American datum. Contouring and grid based on Montana coordinate system, south zone. 1000-meter Universal Transverse Mercator grid zone, zone 12. INFORMATIONAL NOTE: Modification to USGS base maps by the Geological Survey Center with USFS assistance (dates indicated by the National Map). Photo transfer completed by the Regional Office, Missoula. Symbols from aerial photographs taken 1972 and 1973.



SCALE 1:24,000
FOOT
MILE
CONTOUR INTERVAL 40 FEET
DATUM IS MEAN SEA LEVEL

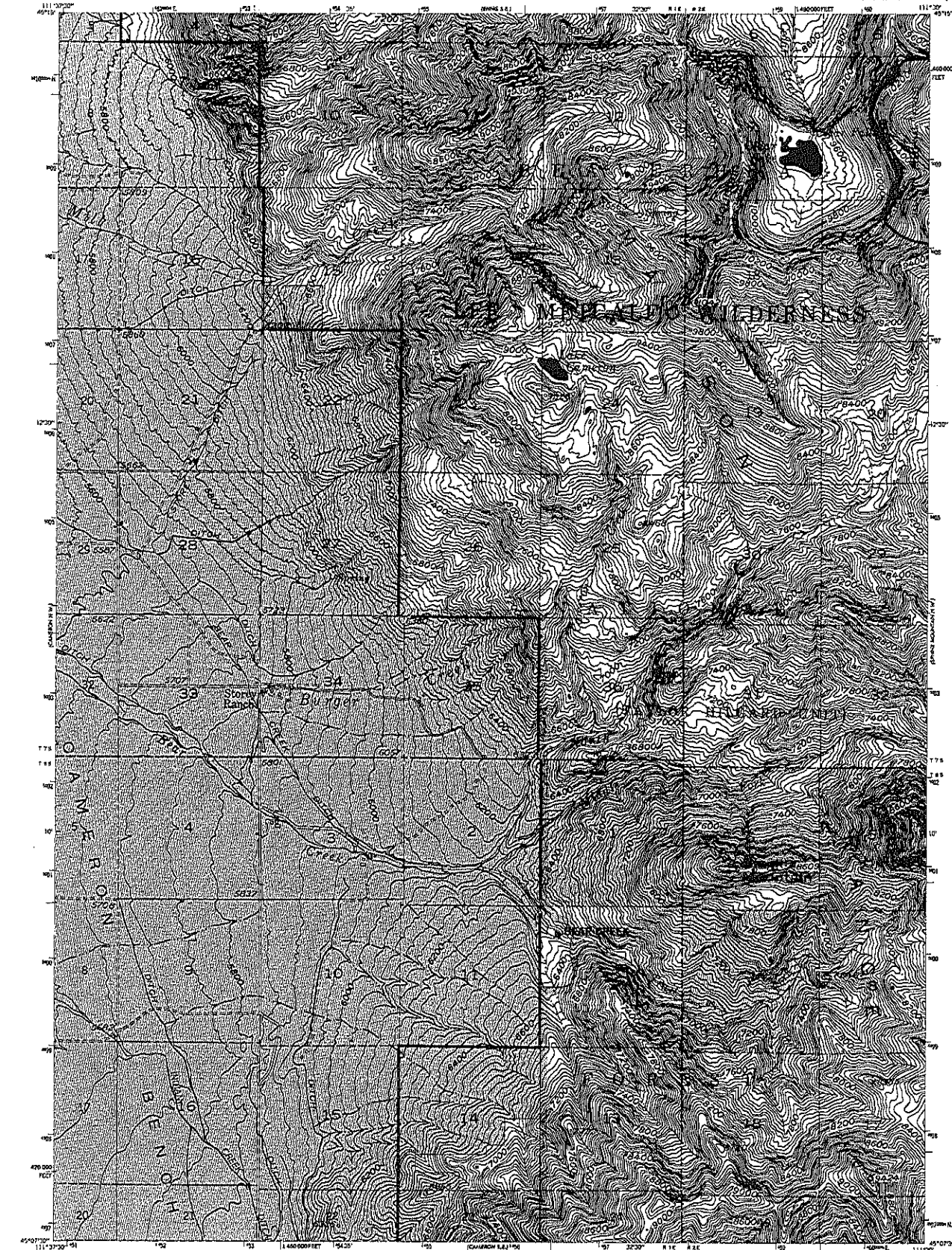
—	National Forest Boundary	—	Primary Highway
—	Alienated Land within the National Forest Boundary	—	Secondary Highway
—	TOWNSHIP AND SECTION LINE CLASSIFICATION	—	Light Duty Road
—	Surveyed, Location Reliable	—	Primitive Road
—	Surveyed, Location Approximate	—	Trail
—	Unsurveyed, Protected	—	Gate



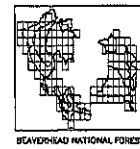
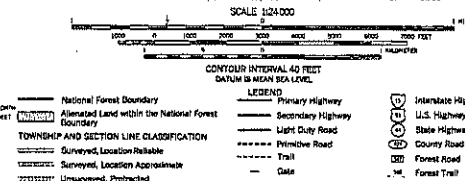
ENNIS SE, MONT.
N4515-W11307.3

UNITED STATES
DEPARTMENT OF THE INTERIOR
GEOLOGICAL SURVEY
MODIFIED FOR USDA FOREST SERVICE USE

CAMERON NE QUADRANGLE
MONTANA-MADISON CO.
7.5 MINUTE SERIES



Stereo compilation by Fairchild Aerial Surveys, Inc. for the Bureau of Reclamation. Field examination and publication by the Geological Survey as part of the Department of the Interior program for the development of the Missouri River Basin. Control by USGS and USACE. Topography from aerial photographs by stereoplotting methods 1948. Aerial photographs taken 1947. Field check 1950. Polyconic projection, 1927 North American datum 10,000 feet and based on Meridian coordinate system, zone 12. 1000-meter Universal Transverse Mercator grid ticks, zone 12. INTERMEDIATE EDITION. Modifications to USGS base map by the Geomorphology Service Center from 1979 correction guides furnished by the Northern Region. Photo transfer completed by the Regional Office Missoula, Montana from aerial photographs taken 1972 and 1973.

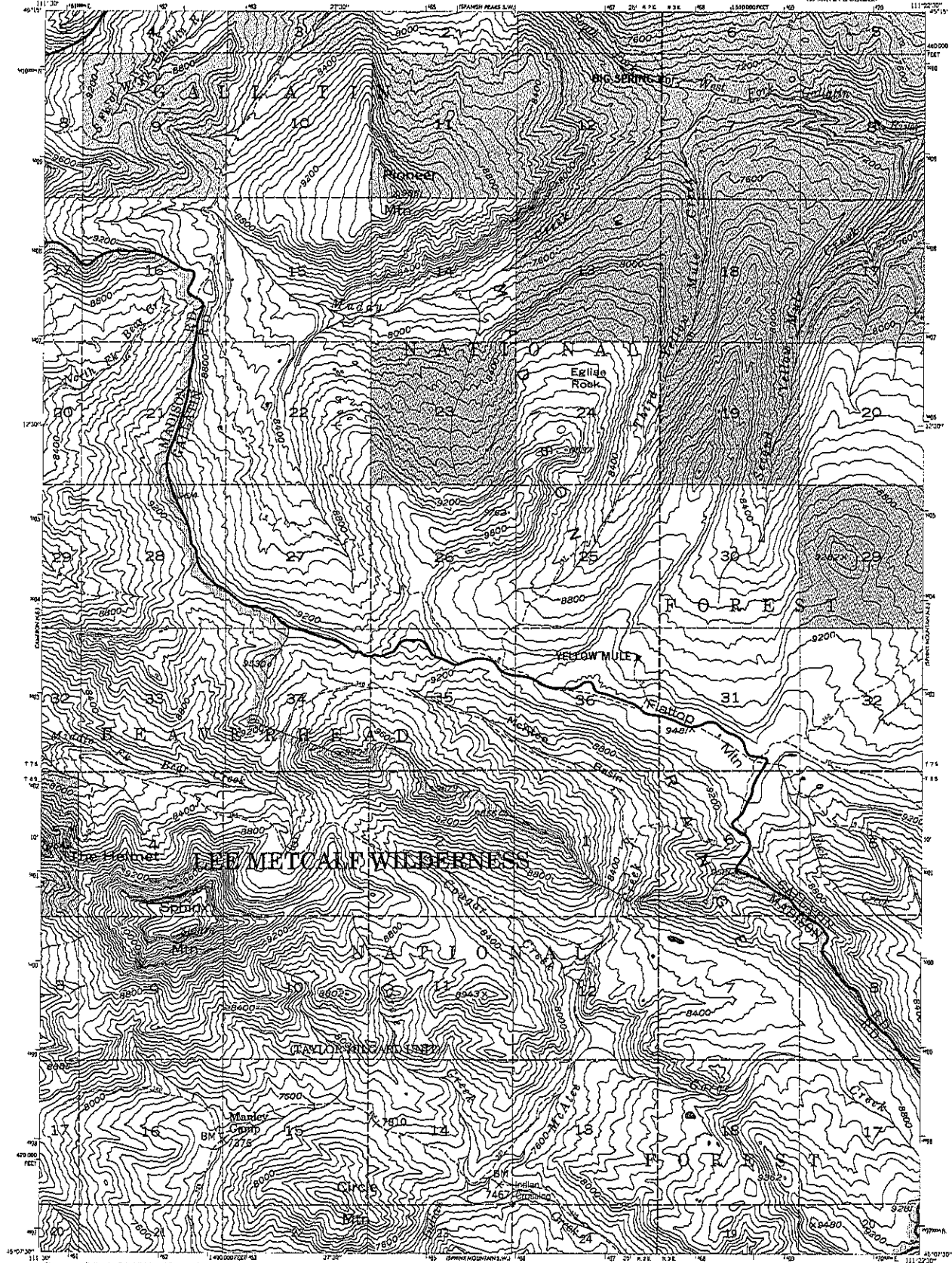


CAMERON NE, MONT.
N45073-W113073
1950

12

UNITED STATES
DEPARTMENT OF THE INTERIOR
GEOLOGICAL SURVEY
MODIFIED FOR USDA FOREST SERVICE USE

SPHINX MOUNTAIN NW QUADRANGLE
MONTANA-MADISON CO.
7.5 MINUTE SERIES

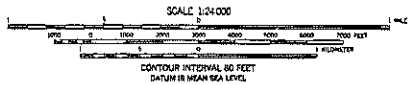


Stereo compilation by Fairchild Aerial Surveys, Inc.
for the Bureau of Reclamation
Field examination and publication by the Geological Survey
as part of the Department of the Interior program
for the development of the Missouri River Basin
Control by USGS and USFWS

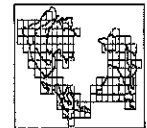
Topography from aerial photographs by stereocompilation
method, 1945. Aerial photographs taken 1942. Field check 1959
Photocopy projection, 1957 North American datum
10,000-foot grid based on Montana coordinate system,
south zone
1:50,000-meter Universal Transverse Mercator grid data,
zone 12
INTERMEDIATE EDITION

Modifications to USGS base map by the Geomorphology Section
Center from 1979 correction guides furnished by the
Northern Region

Photo transfer compiled by the Regional Office Missoula,
Montana from aerial photographs taken 1922 and 1923



- | | |
|---|----------------------|
| — National Forest Boundary | — Interstate Highway |
| — Allotment Land within the National Forest | — U.S. Highway |
| — Township and Section Line Classification | — State Highway |
| — Surveyed, Location Reliable | — County Road |
| — Surveyed, Location Approximate | — Forest Road |
| — Unsurveyed, Protected | — Forest Trail |

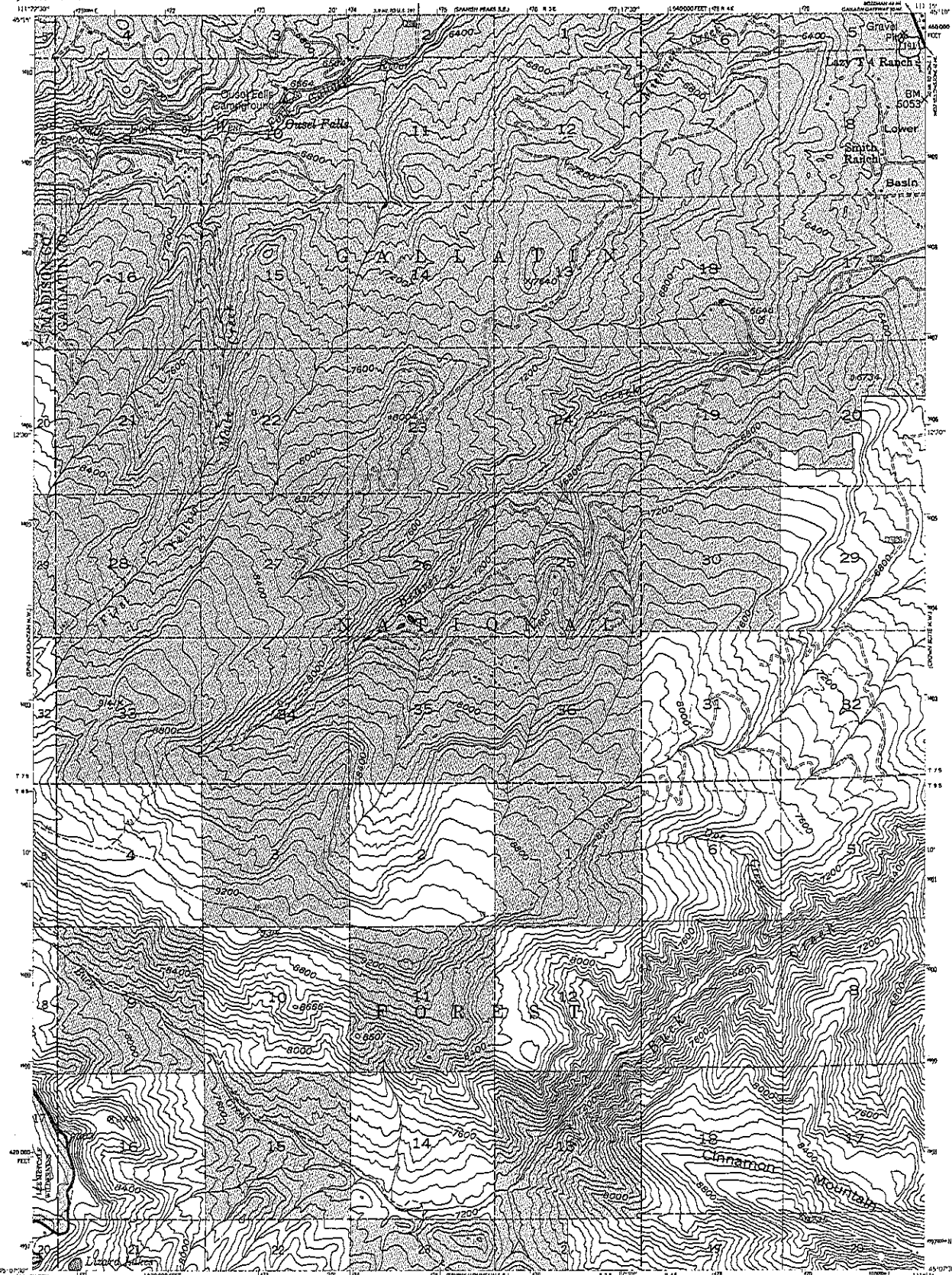


SPHINX MOUNTAIN NW, MONT.
N49°15'-W111°22.5'-S
1955

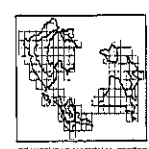
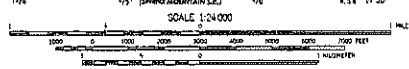
13

UNITED STATES
DEPARTMENT OF THE INTERIOR
GEOLOGICAL SURVEY
MODIFIED FOR USDA FOREST SERVICE USE

SPHINX MOUNTAIN NE QUADRANGLE
MONTANA
7.5 MINUTE SERIES



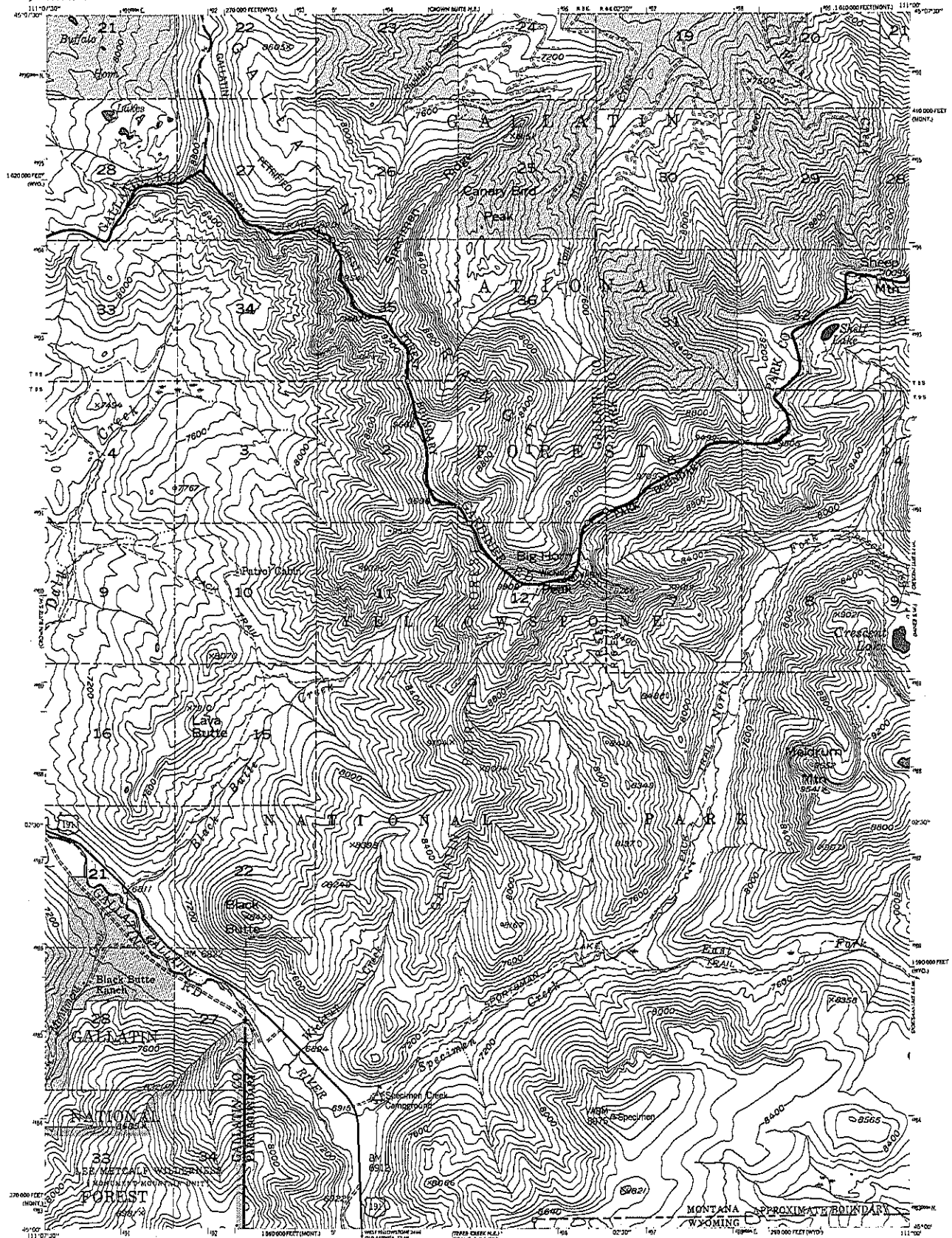
Stereo compilation by Fairchild Aerial Surveys, Inc. for the Bureau of Reclamation. Field examination and publication by the Geological Survey as part of the Department of the Interior program for the development of the Missouri River Basin. Compiled by USGS and USGS/USFS. Topography from aerial photographs by stereographic methods 1943. Aerial photographs taken 1947. Field check 1950. Polyconic projection, 1927 North American datum 10,000-foot grid based on Montana coordinate system, south zone. 1000-meter Universal Transverse Mercator and ticks, zone 12. INTERMEDIATE EDITION. Modifications to USGS data made by the Geomorphology Service Center from 1970 correction guides furnished by the Northern Region. Photo transfer completed by the Regional Office Missoula, Montana from aerial photographs taken 1972 and 1973.



SPHINX MOUNTAIN NE. MONT.
H4507-5-W11115-7.5
1950

UNITED STATES
DEPARTMENT OF THE INTERIOR
GEOLOGICAL SURVEY
MODIFIED FOR USDA FOREST SERVICE USE

CROWN BUTTE S.E. QUADRANGLE
MONTANA
7.5 MINUTE ARKNESS



Base map prepared by the Geological Survey as part of the Department of the Interior program for the development of the Missouri River Basin. Control by USGS and USGS. Topography from aerial photographs by stereoplotting methods, 1948 for the Bureau of Reclamation and by multiple methods 1954 by USGS. Aerial photographs taken 1947 and 1949. Field check 1955. Polyconic projection, 1927 North American datum. 1:50,000 scale and based on National coordinate system, south zone. 1983-meter Universal Transverse Mercator grid ticks, zone 12, shown in blue. INTERMEDIATE EDITION. Modifications to USGS base map by the Geomatics Service Center from 1975 correction guides furnished by the Northern Region. Photo transfer completed by the Regional Office Missoula. Montane from aerial photographs taken 1972 and 1975.

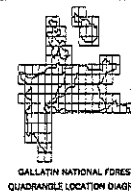


NATIONAL FOREST BOUNDARY
ALLEGED LAND WITHIN THE
NATIONAL FOREST BOUNDARY
TOWNSHIP AND SECTION LINE CLASSIFICATION
Surveyed, Location Reliable
Surveyed, Location Unreliable
Unsurveyed, DLM Projection

CONTOUR INTERVAL 80 FEET
NATIONAL GEODETIC VERTICAL DATUM OF 1929

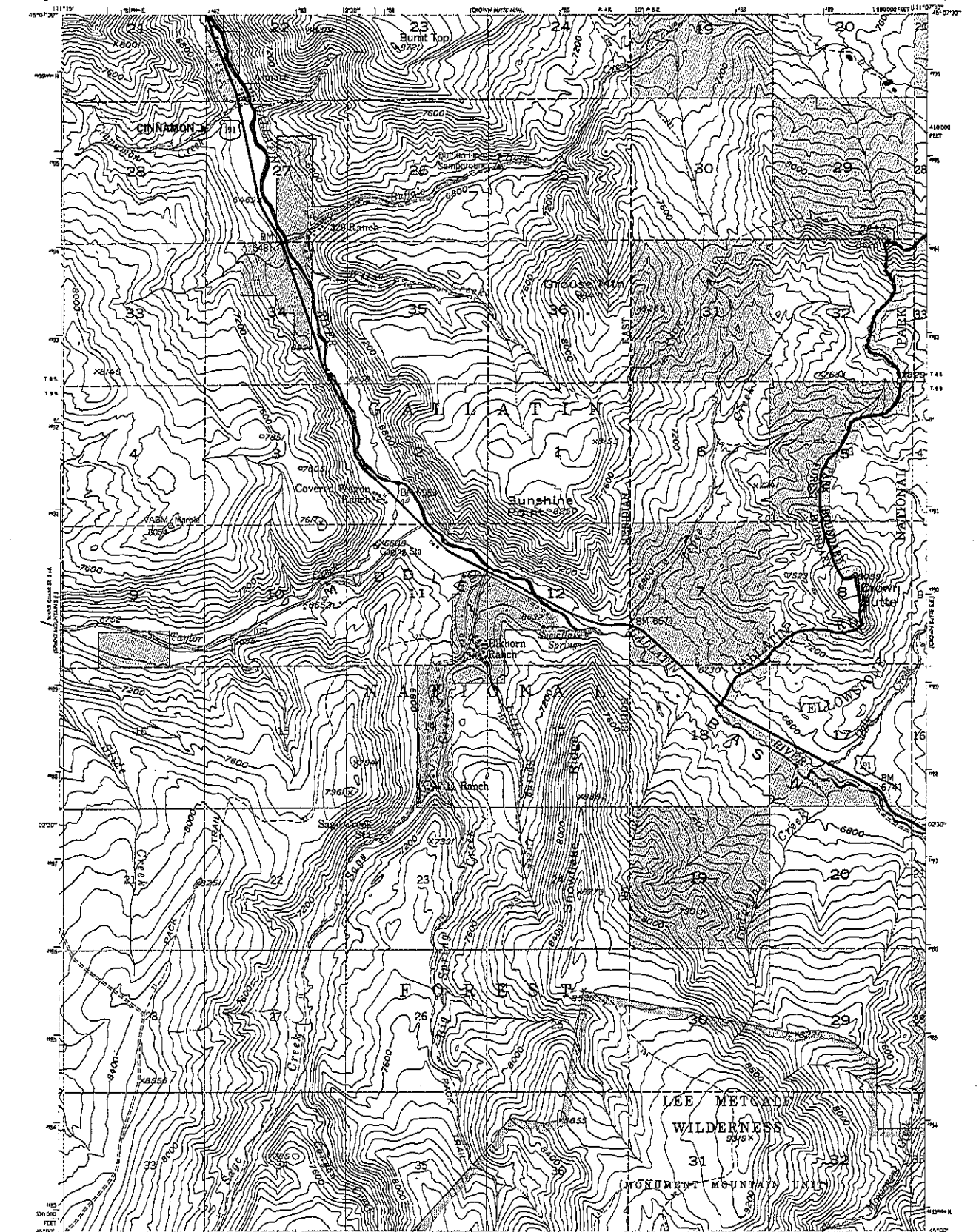
LEGEND
Primary Highway
Secondary Highway
Light Duty Road
Primitive Road
Trail

Interstate
U.S. Highway
State Highway
County Highway
Forest Road
Forest Trail



CROWN BUTTE S.E., MONTANA
14000-W10000-7.5
1955

15



Base map prepared by the Geological Survey as part of the Department of the Interior program for the development of the Missouri River Basin Control by USGS and USFWS.

Topography from aerial photographs by stereoplanning methods 1948 for the Bureau of Reclamation and by multiple methods 1954 by USGS.

Aerial photographs taken 1947 and 1949. Field check 1955.

Photocopy projection, 1927 North American datum, 10,000-foot grid based on Montana coordinate system, south zone, 1000-meter Universal Transverse Mercator grid scale, zone 12, shown in blue.

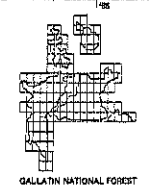
INTRODUCTION

Modifications to USGS base map by the Geomorphology Service Center from 1979 correction guides furnished by the Northern Region.

Photo transfer compiled by the Regional Office Missoula, Montana from aerial photographs taken 1972 and 1975.



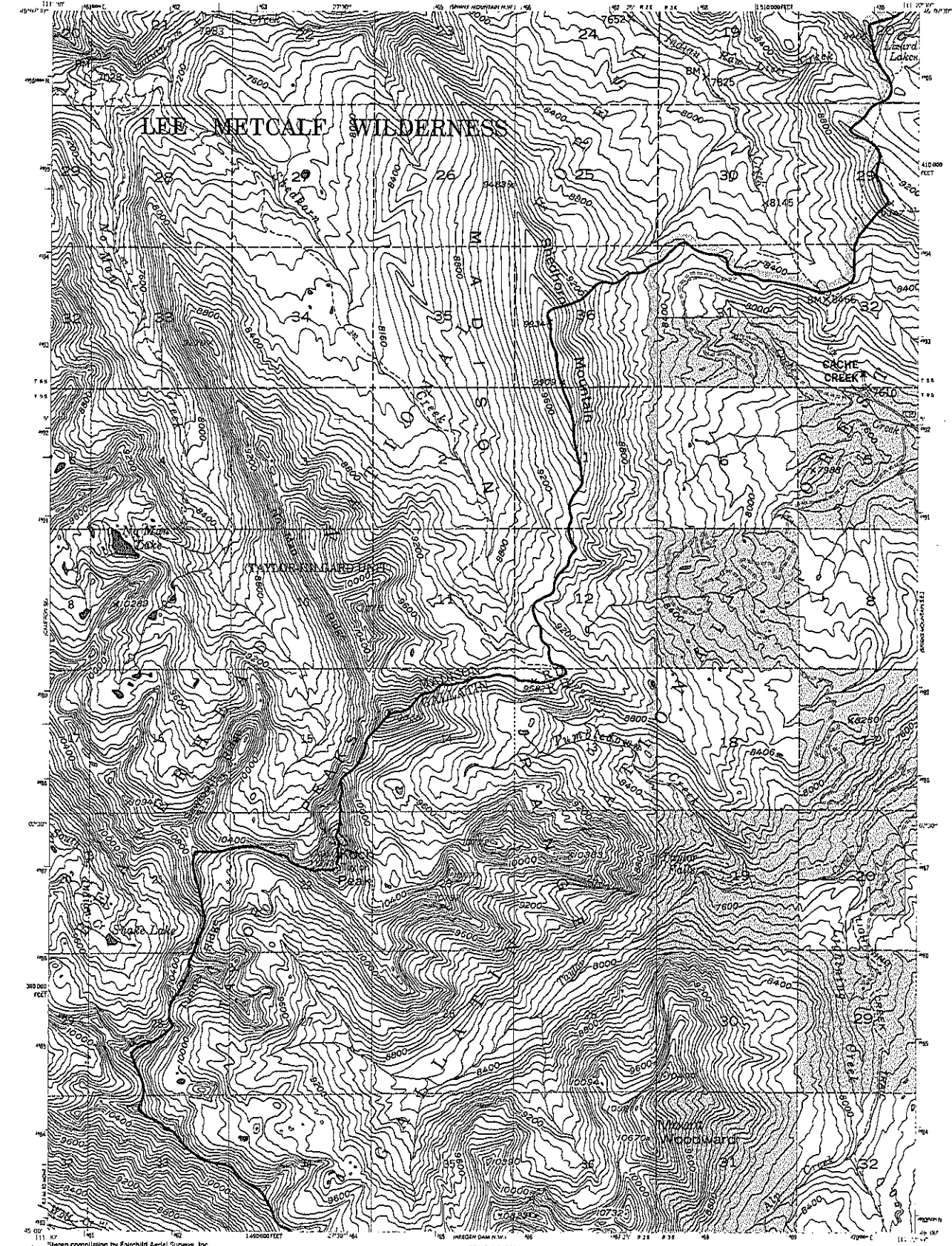
- CONTOUR INTERVAL 80 FEET
NATIONAL GEODETIC VERTICAL DATUM OF 1929
- LEGEND
- | | | |
|--|---------------------|------------------|
| — National Forest Boundary | — Primary Highway | — Interstate |
| — Allotment Land within the National Forest Boundary | — Secondary Highway | — U.S. Highway |
| — Township and Section Line Classification | — Light Duty Road | — State Highway |
| — Surveyed, Location Reliable | — Primitive Road | — County Highway |
| — Surveyed, Location Unreliable | — Trail | — Forest Road |
| — Unsurveyed, BLM Protection | | — Forest Trail |



CROWN BUTTE S.W., MONTANA
N4500-W11007.5/7.5
1955

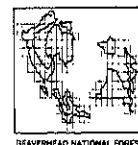
UNITED STATES
DEPARTMENT OF THE INTERIOR
GEOLOGICAL SURVEY
MODIFIED FOR USDA FOREST SERVICE USE

SPHINX MOUNTAIN SW QUADRANGLE
MONTANA—MADISON CO.
7.5 MINUTE REGION



Steno compilation by Fairchild Aerial Surveys, Inc.
for the Bureau of Reclamation
Field examination and publication by the Geological Survey
as part of the Department of the Interior program
for the development of the Missoula River Basin
Control by USGS and USFWS
Topography from aerial photographs by stereoscopic
methods 1948. Aerial photographs taken 1947. Field check 1950
Polyconic projection. 1927 North American datum
10,000-foot grid based on Montana coordinate system,
south zone
1000-meter Universal Transverse Mercator grid ticks,
zone 12
INTERMEDIATE EDITION
Modifications to USGS base map by the Geomorphics Service
Center from 1979 correction guides furnished by the
Northern Region
Photo transfer completed by the Regional Office Missoula,
Montana from aerial photographs taken 1972 and 1973

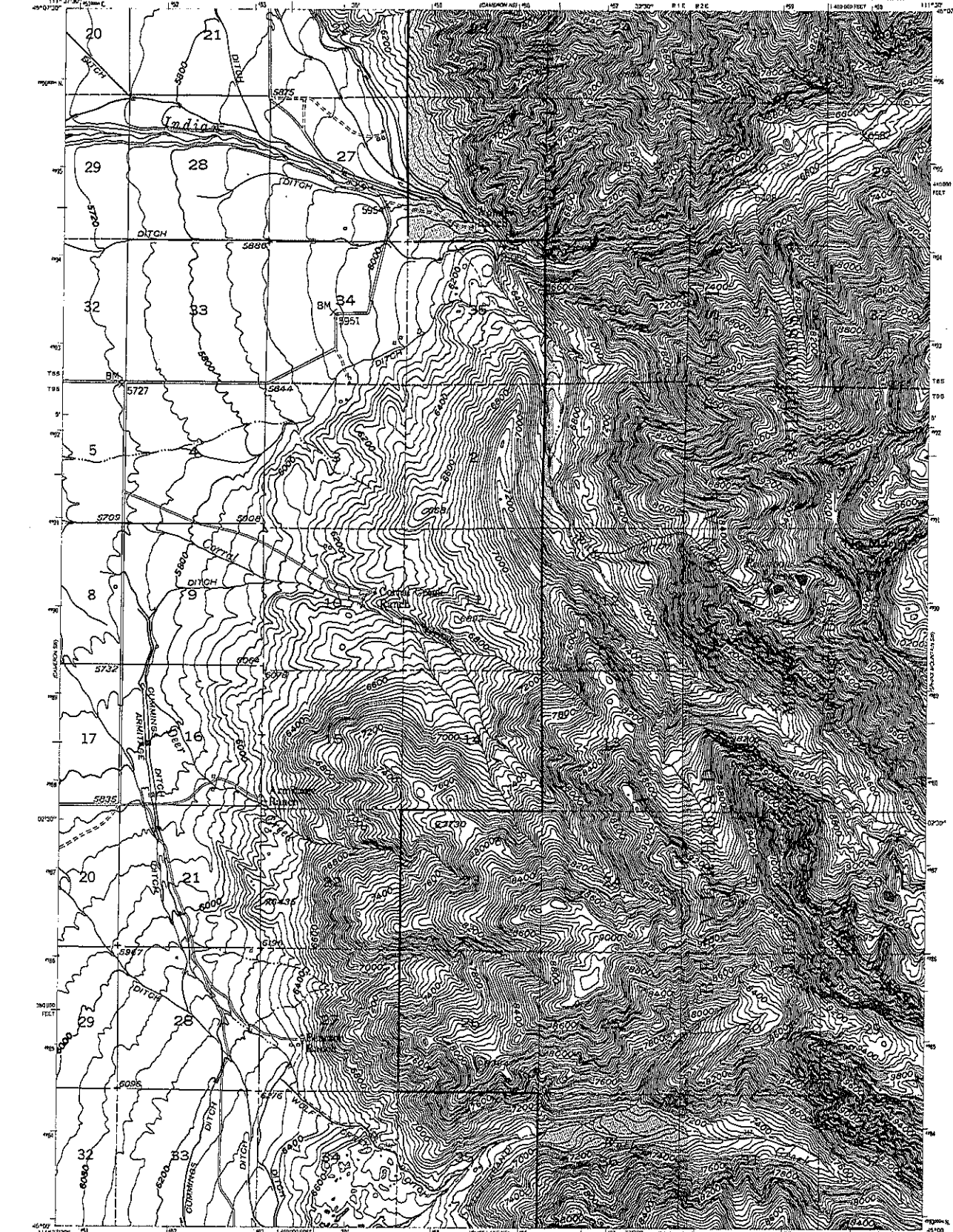
SCALE 1:24,000
CONTOUR INTERVAL 10 FEET
DATUM: BURNING MOUNTAIN
LEGEND
National Forest Boundary
Altered Land within the National Forest
Boundary as of 1979
TOWNSHIP AND SECTION LINE CLASSIFICATION
Surveyed, Location Reliable
Surveyed, Location Approximate
Unsurveyed, Proposed
Priority Highway
Secondary Highway
Light Duty Road
Private Road
Trail
Dike
Interstate Highway
U.S. Highway
State Highway
County Road
Forest Road
Forest Trail



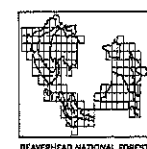
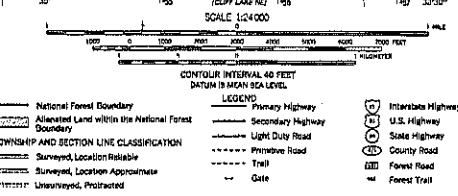
SPHINX MOUNTAIN SW, MONT.
NAD80-WL1122.5/7.3
1992

UNITED STATES
DEPARTMENT OF THE INTERIOR
GEOLOGICAL SURVEY
MODIFIED FOR USDA FOREST SERVICE USE

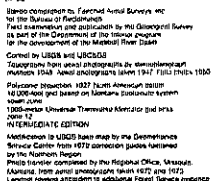
CAMERON SE. QUADRANGLE
MONTANA—HARRISON CO.
7.5 MINUTE SQUARE
1:62,500 (1950)



General compilation for National Forest Survey, 1950, for the Bureau of Reclamation. Field examination and compilation by the Geological Survey as part of the Department of the Interior program for the development of the National Forest System. Control by USGS and USGAS. Topographic base maps photostatic by the Geological Survey. National Forest System maps 1947. Maps dated 1950. Projection: 1927 North American datum. 10,000-foot grid based on North American datum, 1927. 1000-meter Universal Transverse Mercator grid system, 1927. INTERMEDIATE EDITION. Modification to USGS base map by the Geological Survey. Current map 1975. Correction and update furnished by the National Forest Service. Photo transfer completed by the Regional Office, Helena, Montana, from aerial photographs taken 1972 and 1973. Landmark revised according to additional Forest Service evidence.



CAMERON SE. MONT.
NAD80—W11130/7.5
1950



SCALE 1:24,000

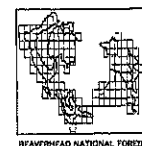
0 500 1000 1500 2000 2500 3000 3500 4000 4500 5000 5500 6000 6500 7000 7500 8000 8500 9000 9500 10000

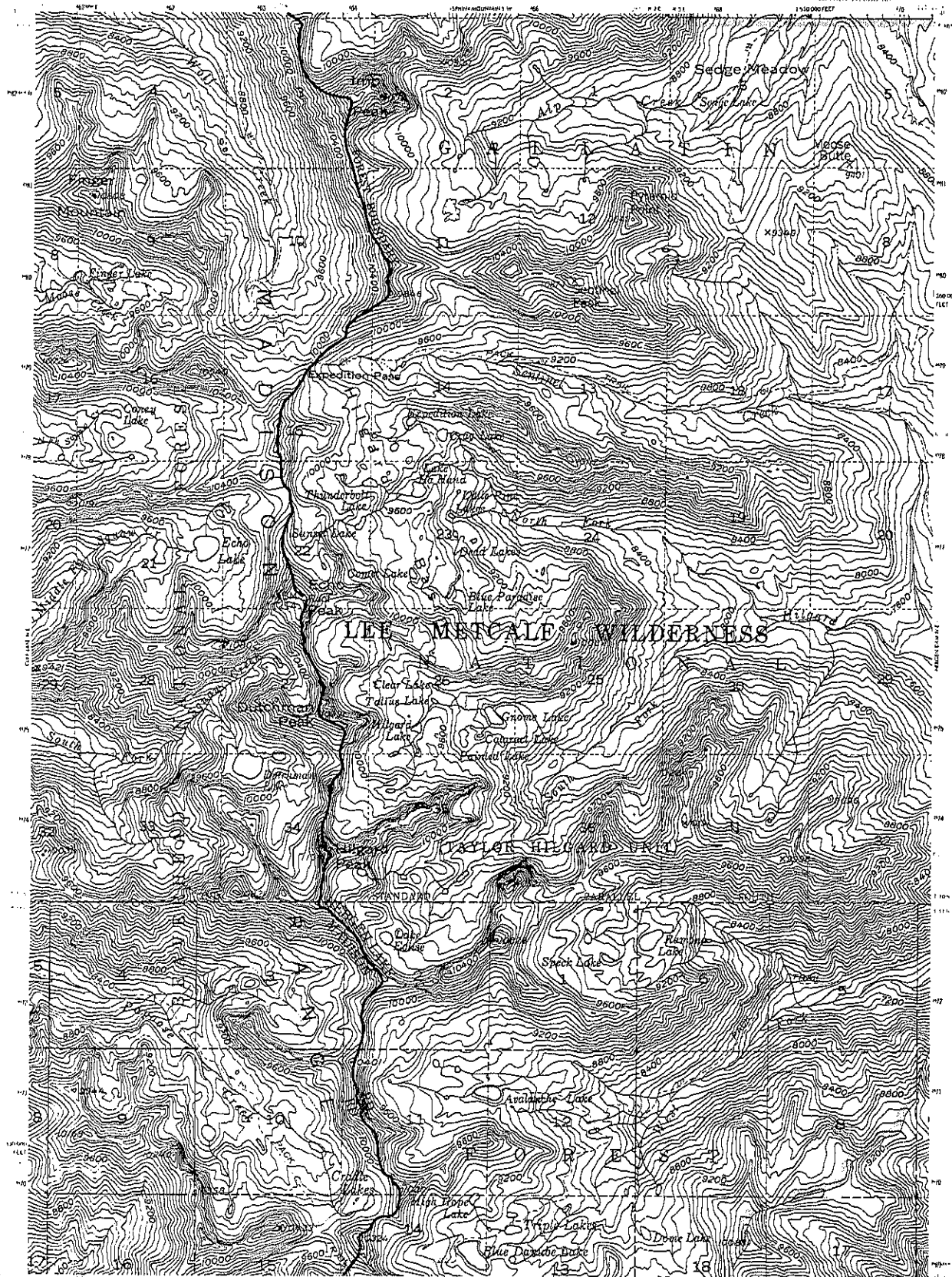
1 INCH = 2000 FEET

CONTOUR INTERVAL 40 FEET
DAKUM IS MEAN SEA LEVEL

LEGEND

—	National Forest Boundary	—	Primary Highway	(V)	Interstate Highway
- - -	Altered Land within the National Forest Boundary	—	Secondary Highway	(H)	U.S. Highway
—	Surveyed Location	—	Light Rail Road	(O)	State Highway
—	TOWNSHIP AND SECTION LINE CLASSIFICATION	—	—	(D)	Dunley Road
—	Surveyed Location Applicable	—	—	(F)	Forest Road
—	Surveyed Location Applicable	—	—	(M)	Forest Trail
—	Surveyed Location Applicable	—	—	(4)	Forest Trail





Stereo compilation by Fairchild Aerial Surveys, Inc.
for the Bureau of Reclamation.
First examination and publication by the Geological Survey
as part of the Department of the Interior program
for the development of the Missouri River Basin.
Control by USGS and USNCGS.

Topography from aerial photographs by stereocompilation
method, 1960. Aerial photographs taken 1947. Field check 1950.
Projection, projection 1927 North American datum.
10,000 feet and based on Montana coordinate system.
North zone and datum declination system, and zone
1000 meter universal Transverse Mercator grid line
zone 12, "N" of line.

INTERMEDIATE EDITION

Modifications to USGS base map by the Geomorphology Service
Center from 1979 correction guides furnished by the
Northern Region.

Photo transfer completed by the Regional Office, Missoula,
Montana, from aerial photographs taken 1972 and 1975.

CONTOUR INTERVAL 40 FEET
DATUM IS MSL (SEA LEVEL)

LEGEND

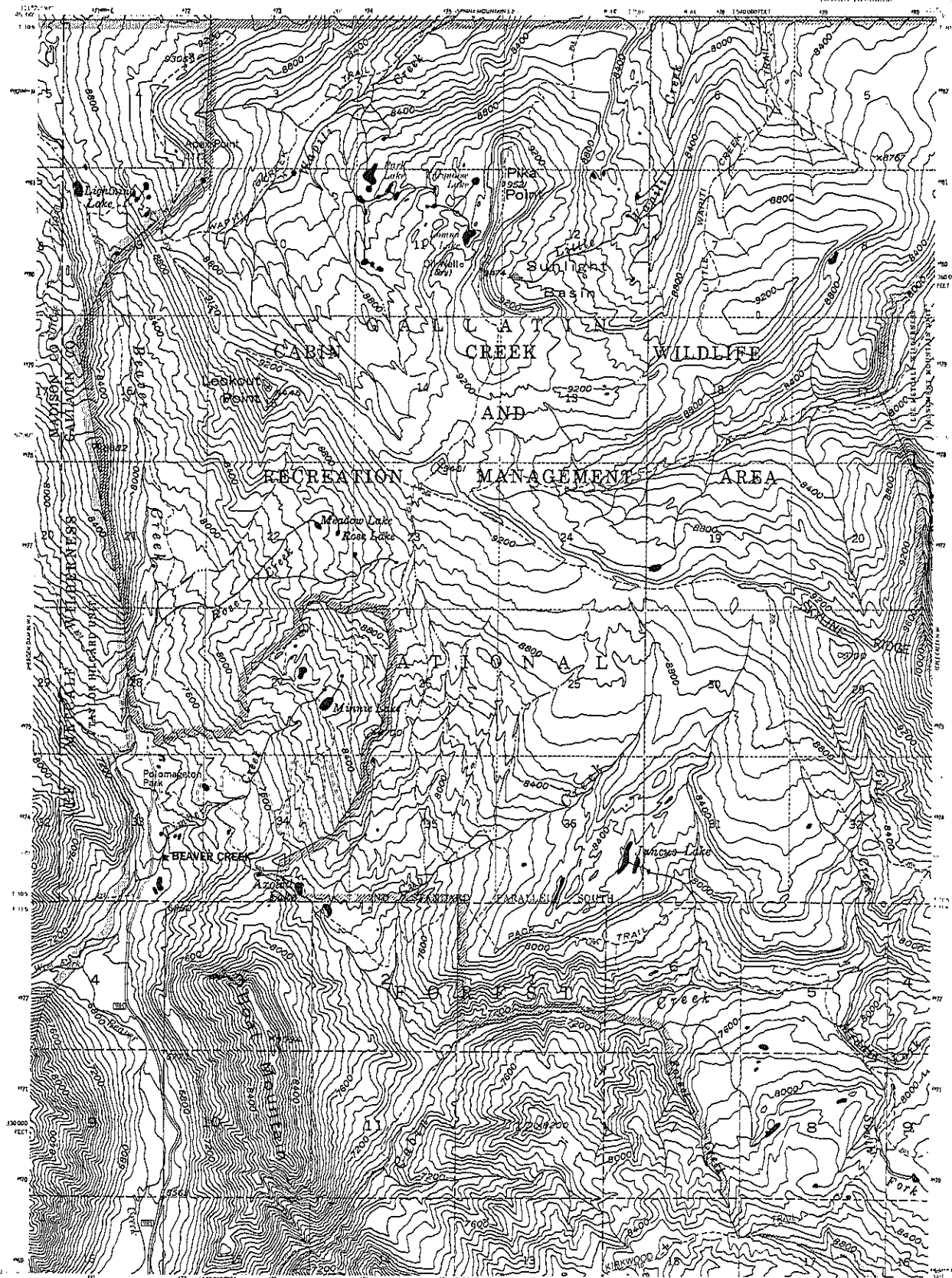
National Forest Boundary
National Forest Land within the
National Forest Boundary
TOWNSHIP AND SECTION LINE CLASSIFICATION
Surveyed Location Reliable
Surveyed Location Unreliable
Unsurveyed, BLM Projection

Primary Highway
Secondary Highway
Light Duty Road
Frontier Road
Trail

Interstate
U.S. Highway
State Highway
County Highway
Forest Road
Forest Trail

HEBGEN DAM N.W. MONTANA
1942/5-191122/5 75
1950

GALLATIN NATIONAL FOREST
QUADRANGLE LOCATION DIAGRAM



Stereo compilation by Fairchild Aerial Surveys, Inc.
for the Bureau of Reclamation
Field examination and publication by the Geological Survey
as part of the Department of the Interior program
for the development of the Missoula River Basin
Control by USGS and USGAS
Topography from aerial photographs by stereoplano-
graphs, 1948; aerial photographs taken 1947; field check 1950
Polyconic projection 1927 North American datum
10,000-foot grid based on Montana coordinate system
South zone and Gauss coordinate system, east zone
1000-meter Universal Transverse Mercator grid, zone 12, shown in blue
INTERMEDIATE EDITION
Modifications to USGS base map by the Geomorphology Service
Center from 1978 correction grades furnished by the
Northern Region
Photo transfer compiled by the Regional Office Missoula,
Montana from aerial photographs taken 1972 and 1975

USDA AND USGS
MAGNETIC NORTH
DECLINATION AT
CENTER OF SHEET

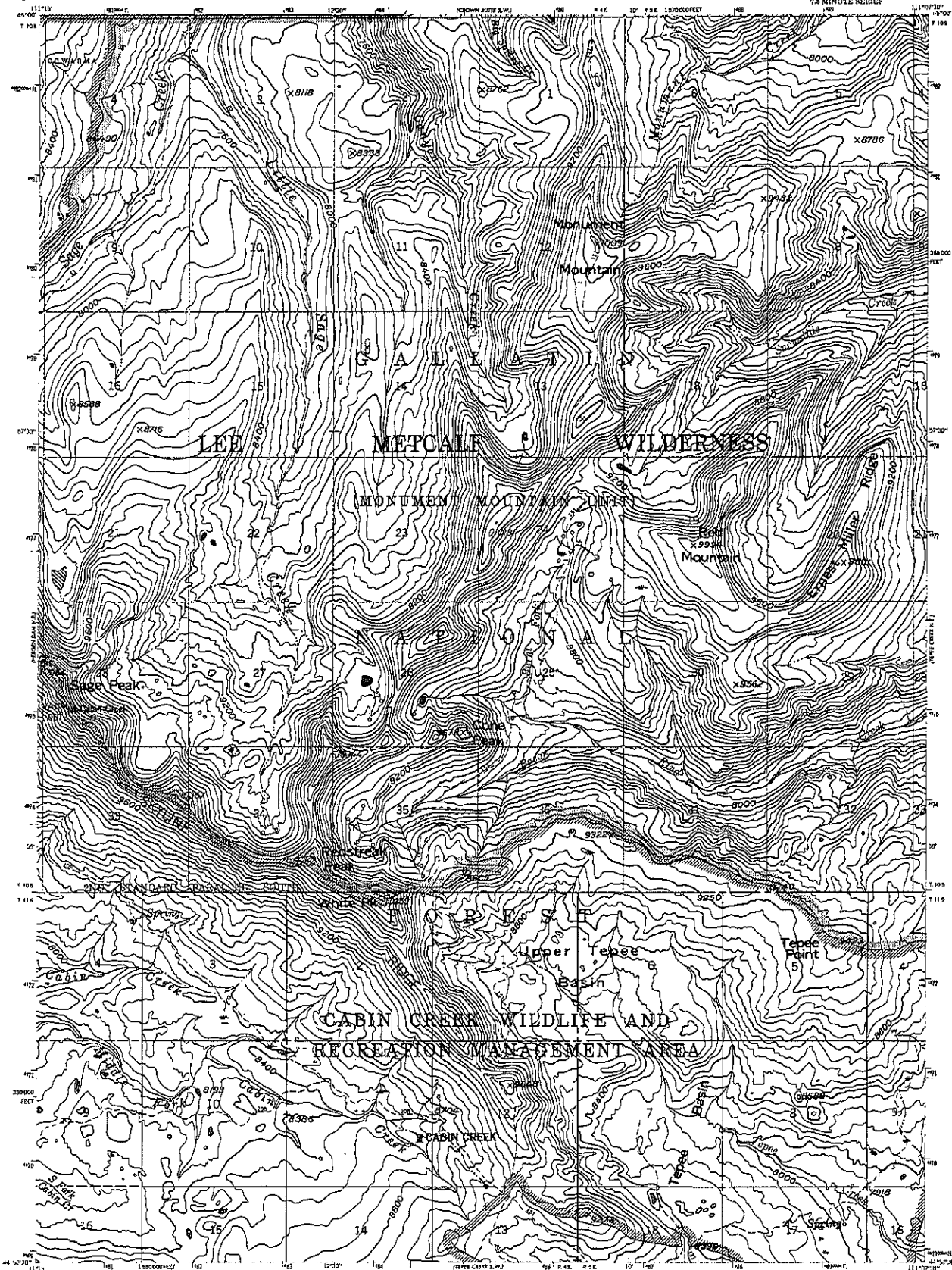
Legend
National Forest Boundary
Alienated Land within the
National Forest Boundary
TOWNSHIP AND SECTION LINE CLASSIFICATION
Surveyed, Location Reliable
Surveyed, Location Unreliable
Unsurveyed, DGM Projection

Legend
Primary Highway
Secondary Highway
Light Duty Road
Primitive Road
Trail

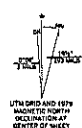
Interstate
U.S. Highway
State Highway
County Highway
Forest Road
Forest Trail

CALLATHIN NATIONAL FOREST
QUADRANGLE LOCATION DIAGRAM

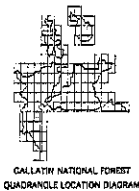
HEBGEN DAM N.E. MONTANA
NAD83-11115 7.5
1940



Base map prepared by the Geological Survey
Control by USGS and USGAS
Topography from aerial photographs by photogrammetric methods
for the Bureau of Reclamation 1949 and by the Geological Survey
1958 Aerial photographs taken 1947 and 1954. Field checked 1958
Polyconic projection, 1927 North American datum
10,000-foot grid based on Montana coordinate system,
south zone. Township and section numbers, west zone,
1000-meter Universal Transverse Mercator and UTM
zone 12, shown in blue
This map shows ground conditions prior to the earthquake
of August 17, 1959
INTERMEDIATE EDITION
Modifications to USGS base map by the Geomorphology Service
Center from 1979 correction guides furnished by the
Northern Region.
Photo transfer completed by the Regional Office Missoula,
Montana from aerial photographs taken 1972 and 1975.



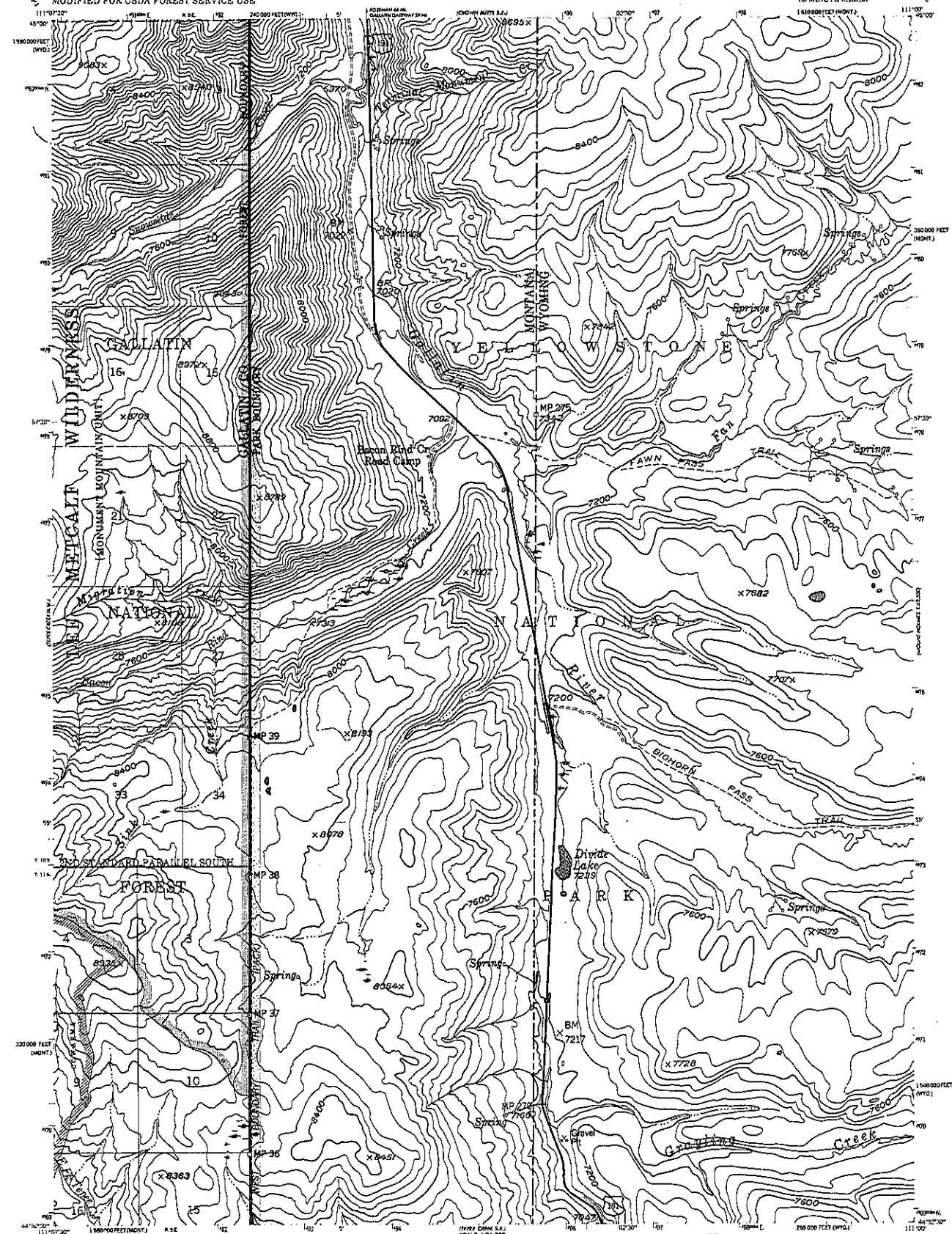
- LEGEND
- National Forest Boundary
 - Altered Land within the National Forest Boundary
 - Township and Section Line Classification
 - Surveyed Location Reliable
 - Surveyed Location Unreliable
 - Unsurveyed, DLM Projection
 - Primary Highway
 - Secondary Highway
 - Light Duty Road
 - Primitive Road
 - Trail
 - Interstate
 - U.S. Highway
 - State Highway
 - County Highway
 - Forest Road
 - Forest Trail



TEPEE CREEK N.W., MONTANA
H44323-W115073/75
1958

UNITED STATES
DEPARTMENT OF THE INTERIOR
GEOLOGICAL SURVEY
MODIFIED FOR USDA FOREST SERVICE USE

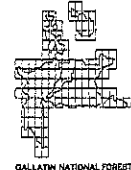
TEPEE CREEK N.E. QUADRANGLE
MONTANA-WYOMING
7.5 MINUTE SERIES



Base map prepared by the Geological Survey
Control by USGS and USGS
Topography from aerial photographs by photogrammetric methods
for the Bureau of Reclamation 1948 and by the Geological Survey
1958 Aerial photographs taken 1947 and 1954. Field checked 1958
Polyconic projection, 1927 North American datum
10,000-foot grid based on Meridian coordinate system,
south zone (Universal Transverse Mercator grid), zone 12,
sheet 12, sheet 12
This map series shows conditions prior to the earthquake of
August 17, 1959
INTERMEDIATE EDITION
Modifications to USGS base map by the Geomorphology Service
Center from 1979 correction guides furnished by the
Northern Region
Photo transfer compiled by the Regional Office Missoula,
Montana from aerial photographs taken 1972 and 1975.



- CONTOUR INTERVAL 80 FEET
DATUM IS MEAN SEA LEVEL
- LEGEND
- National Forest Boundary
 - Altered Land within the National Forest Boundary
 - TOPOGRAPHIC AND SECTION LINE CLASSIFICATION
 - Surveyed, Location Reliable
 - Surveyed, Location Unreliable
 - Unsurveyed, BLM Protection
 - Primary Highway
 - Secondary Highway
 - Light Duty Road
 - Primitive Road
 - Trail
 - Interstate
 - U.S. Highway
 - State Highway
 - County Highway
 - Forest Road
 - Forest Trail



TEPEE CREEK N.E. MONT.-WYO.

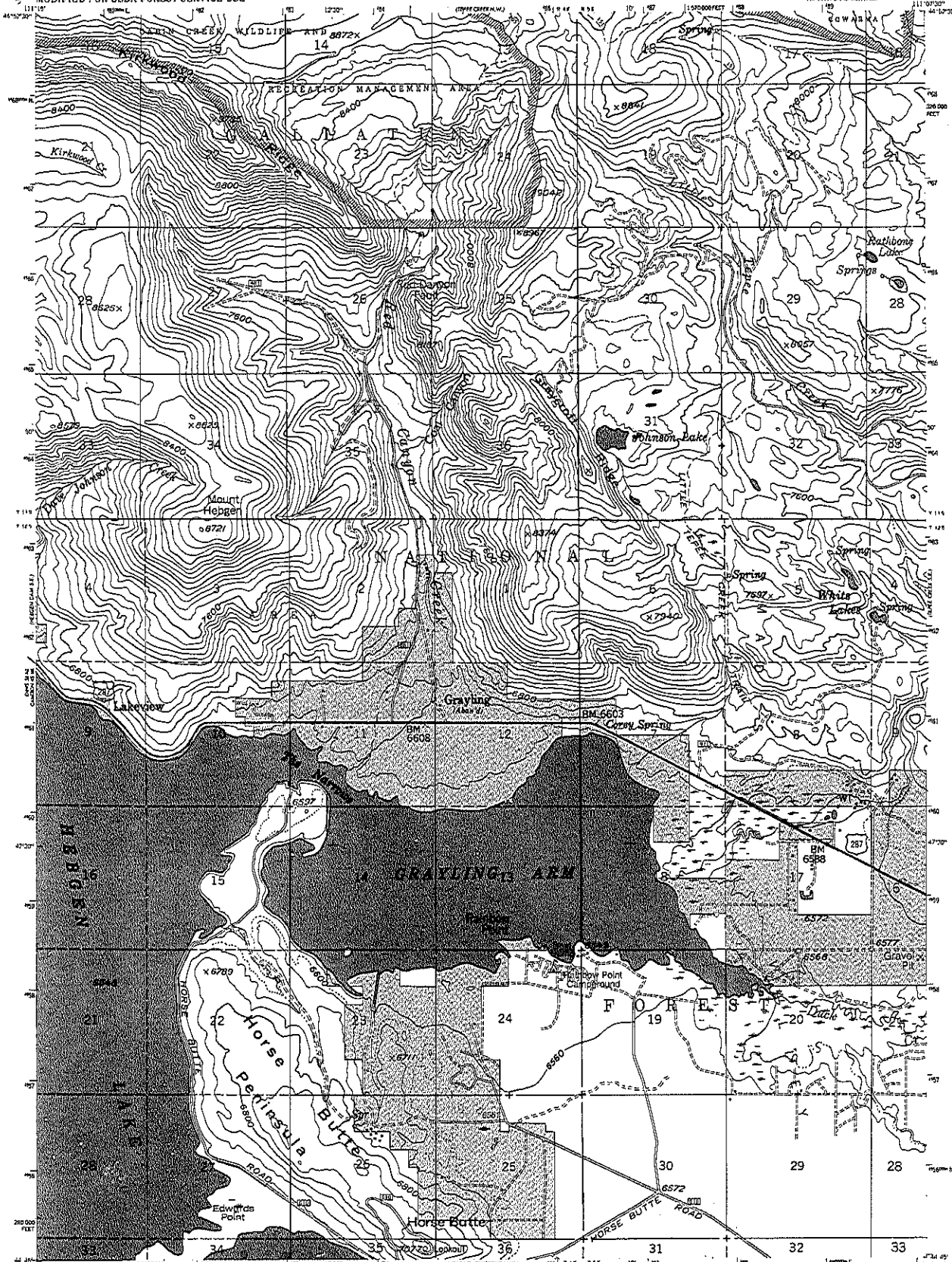
1:250,000

23

UNITED STATES
DEPARTMENT OF THE INTERIOR
GEOLOGICAL SURVEY
MODIFIED FOR USDA FOREST SERVICE USE

TEPEE CREEK S.W. QUADRANGLE
MONTANA

7.5 MINUTE SERIES



Base map prepared by the Geological Survey
Control by USGS and USCAOS

Topography from aerial photographs by photogrammetric methods
for the Bureau of Reclamation 1945 and by the Geological Survey
USGS Aerial photographs taken 1947 and 1954. Field checked 1958

Polyconic projection, 1927 North American datum
10,000-foot and based on Montana coordinate system,
south zone Transverse Mercator system, west zone
1000-meter Universal Transverse Mercator and ticks,
zone 12, shown in blue

This map portrays ground conditions prior to the earthquake
of August 17, 1959

INTERMEDIATE EDITION
Modifications to USGS base map by the Geomorphics Service
Center from 1979 correction grids furnished by the
Northern Region.

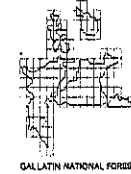
Photo transfer completed by the Regional Office Missoula,
Montana from aerial photographs taken 1972 and 1975.



Legend
National Forest Boundary
Allotted Land within the
National Forest Boundary
TOWNSHIP AND SECTION LINE CLASSIFICATION
Surveyed, Location Reliable
Surveyed, Location Unreliable
Unsurveyed, GNM Protection

Legend
Primary Highway
Secondary Highway
Light Duty Road
Primitive Road
Trail

Legend
Interstate
U.S. Highway
State Highway
County Highway
Forest Road
Forest Trail



TEPEE CREEK S.W. MONTANA

64645-111107A/7.5

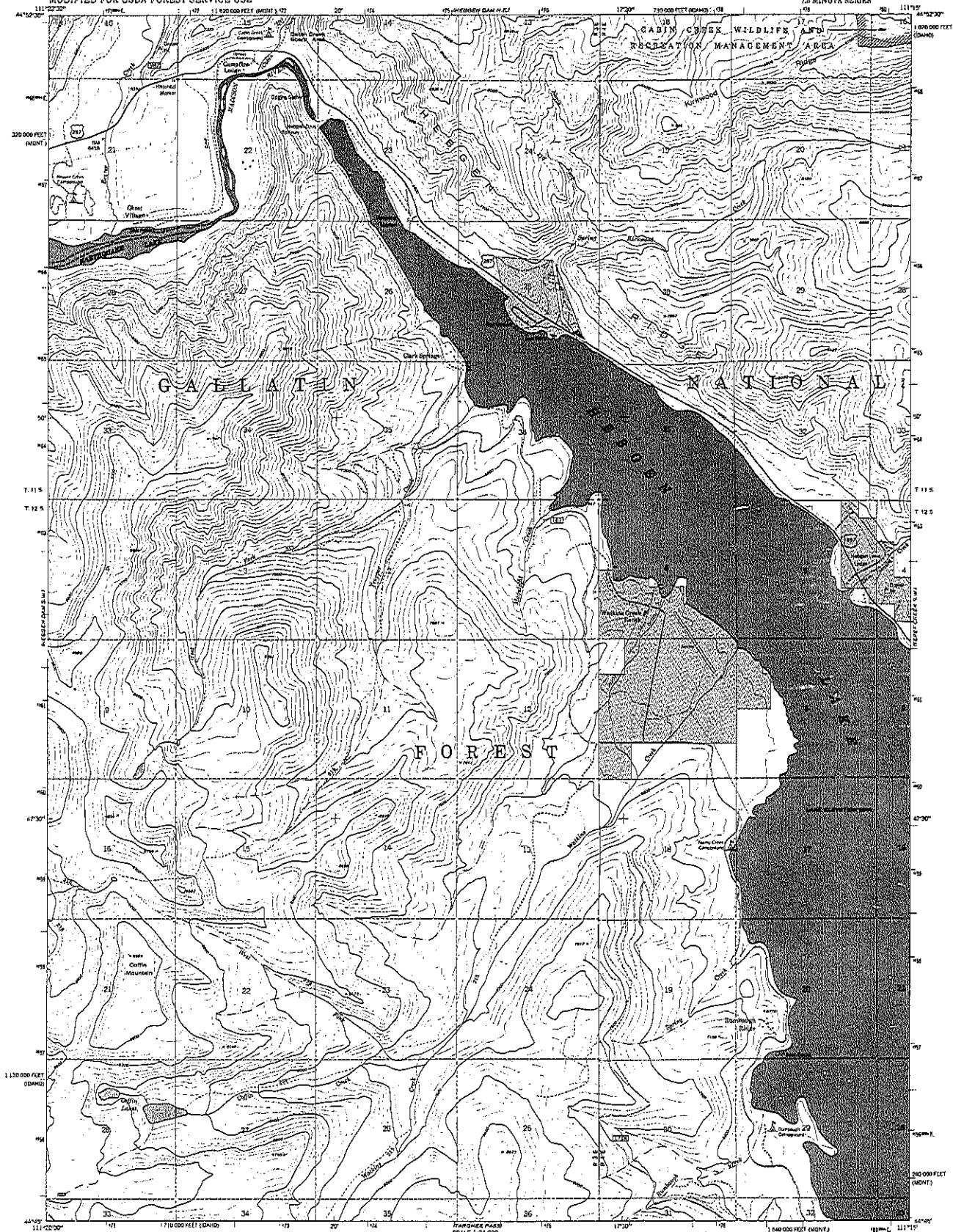
1958

24

GALLATIN NATIONAL FOREST
QUADRANGLE LOCATION DIAGRAM

UNITED STATES
DEPARTMENT OF THE INTERIOR
GEOLOGICAL SURVEY
MODIFIED FOR USDA FOREST SERVICE USE

HEBGEN DAM S.E. QUADRANGLE
MONTANA-IDAHO
7.5 MINUTE SERIES



Stereo compilation by Fairchild Aerial Surveys, Inc.
for the Bureau of Reclamation
Field examination and publication by the Geological Survey
as part of the Department of the Interior program
for the development of the Missouri River Basin
Control by USGS and USFS
Topography from aerial photographs by stereoserialization
methods 1945. Aerial photographs taken 1947. Field check 1950
Polyconic projection, 1927 North American datum
16,000-foot grid based on Montana coordinate system.
South zone and Idaho coordinate system, east zone
1000-meter Universal Transverse Mercator grid lines,
zone 12, shown in blue

INTERMEDIATE EDITION
Modifications to USGS base map by the Geomorphology Service
Center from 1979 correction guide (published by the
Northern Region)
Photo transfer compiled by the National Office Missouri,
Montana from aerial photographs taken 1972 and 1975.



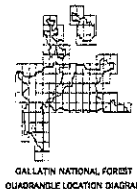
CONTOUR INTERVAL 10 FEET
DATUM IS MEAN SEA LEVEL

LEGEND

— National Forest Boundary
— Alienated Land within the National Forest Boundary
— TOWNSHIP AND SECTION LINE CLASSIFICATION
— Surveyed, Location Reliable
— Surveyed, Location Unreliable
— Unsurveyed, BLM Protection

— Primary Highway
— Secondary Highway
— Light Duty Road
— Private Road
— Trail

Interstate
U.S. Highway
State Highway
County Highway
Forest Road
Forest Trail



HEBGEN DAM S.E. MONT.-IDA.
H4462.5-W11115/7.5
1962

25

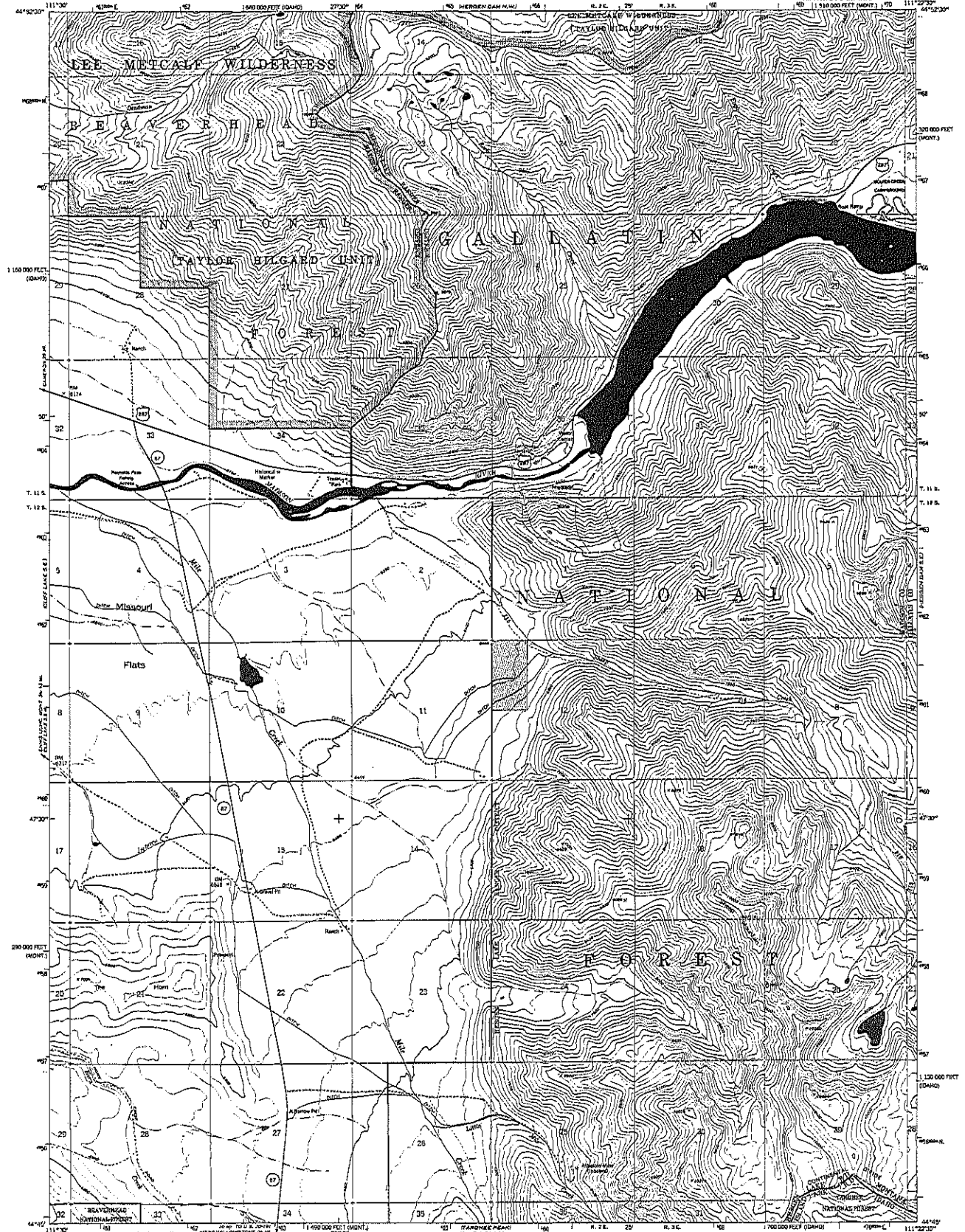
UNITED STATES
DEPARTMENT OF THE INTERIOR
GEOLOGICAL SURVEY
MODIFIED FOR USDA FOREST SERVICE USE

HEBGEN DAM S.W. QUADRANGLE

MONTANA-IDAHO

7.5 MINUTE SERIES

1:50,000 FEET (1:50,000)



This map was prepared by the Geological Survey as part of the Department of the Interior program for the development of the Missouri River Basin. It is a modification of a map prepared by Fairchild Aerial Surveys, Inc. for the Bureau of Reclamation. Field examination and publication by the Geological Survey as part of the Department of the Interior program for the development of the Missouri River Basin. Control by USGS and USGS.

Topography from aerial photographs by stereoplano-graph methods 1945. Aerial photographs taken 1947. Field check 1950. Photocopy projection, 1927 North American datum. 10,000-foot grid based on Montana coordinate system, east zone and Idaho coordinate system, east zone. 1000-meter Universal Transverse Mercator grid UTM, zone 12, shown in blue.

INTERMEDIATE EDITION
Modifications to USGS base map by the Geomorphics Service Center from 1979 correction guides furnished by the Northern Region.
Photo transfer completed by the Regional Office Missoula, Montana from aerial photographs taken 1977 and 1979.



UTM ZONE 12
EASTING 750,000
NORTHING 5,000,000
CENTER OF SHEET

Legend:
National Forest Boundary
Unsurveyed Land within the National Forest Boundary
TOWNSHIP AND SECTION LINE CLASSIFICATION
Surveyed Location Reliable
Unsurveyed, Location Unreliable
Unsurveyed, DLM Protection

Legend:
Primary Highway
Secondary Highway
Light Duty Road
Primitive Road
Trail

Legend:
Interstate
U.S. Highway
State Highway
County Highway
Forest Road
Forest Trail

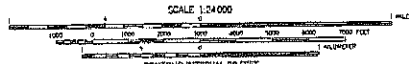


HEBGEN DAM S.W., MONT.-IDA.

1:50,000 FEET (1:50,000)

1950

26

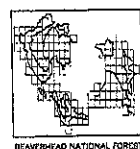


— National Forest Boundary
 --- Alienated Land within the National Forest Boundary
TOWNSHIP AND SECTION LINE CLASSIFICATION
 ————— Surveyed, Location Reliable
 - - - - - Surveyed, Location Approximate
 Unsurveyed, Protracted

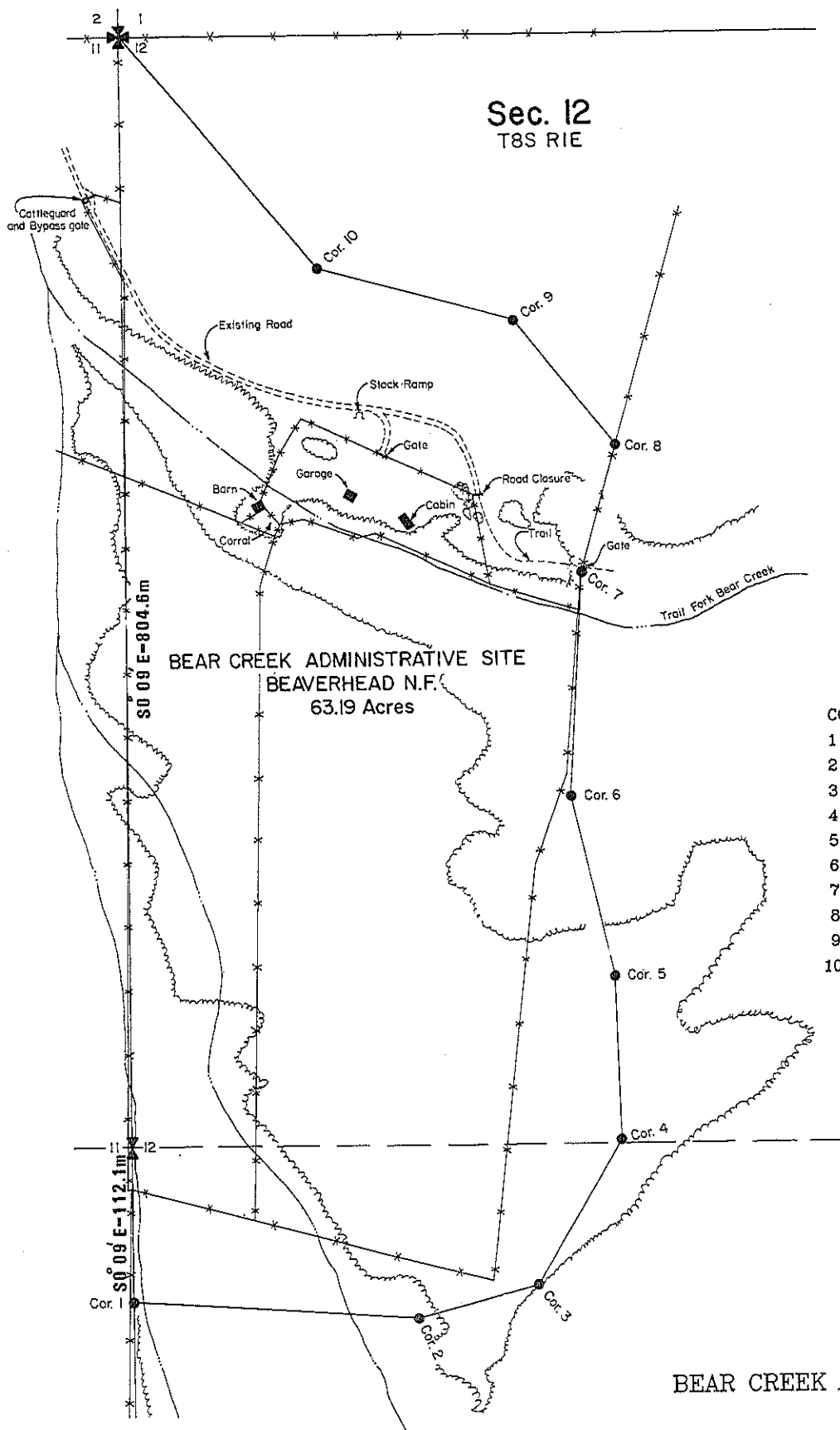
LEGEND

	Primary Highway
	Secondary Highway
	Light Duty Road
	Primitive Road
	Trail
	Gate

	Interstate Highway
	U.S. Highway
	State Highway
	County Road
	Forest Road
	Forest Trail



CLIFF LAKE SE, MONT.
N4445--W11130/7.5
1990



CORNER	BEARING	DISTANCE
1 to 2	S86°18'E	205.4 m
2 to 3	N75°07'E	89.2 m
3 to 4	N29°55'E	121.4 m
4 to 5	N01°59'W	117.8 m
5 to 6	N13°07'W	134.8 m
6 to 7	N03°15'E	161.7 m
7 to 8	N15°16'E	96.0 m
8 to 9	N38°24'W	116.7 m
9 to 10	N74°37'W	145.1 m
10 to 11	N39°57'W	220.2 m

●-ALUMINUM ROD W/CAP

BEAR CREEK ADMINISTRATIVE SITE

SURVEYED BY K.MEEKER (10-85)