

Base map prepared by the U.S. Geological Survey
Control by USGS and USG&S

Topography by photogrammetric methods from aerial
photographs taken 1964. Field checked 1966

Polycyclic projection, 1927 North American datum
10,000-foot grid based on Idaho coordinate system, west zone
1000-meter Universal Transverse Mercator grid ticks,
zone 11

Modification to USGS base map by Geomatics Service
Center from 1987 aerial photography and 1988 correction
guides furnished by the Northern Region

Landnet revised according to additional Forest Service
evidence

UTM GRID AND 1980
MAGNETIC NORTH
DECLINATION AT
CENTER OF SHEET

1°30' 29" W
1°30' 29" W
1°30' 29" W

CONTOUR INTERVAL 40 FEET
DATUM IS MEAN SEA LEVEL

1:24,000

1 MILE
1 KILOMETER

National Forest Boundary
Non Forest Land as of 1988

TOWNSHIP AND SECTION LINE CLASSIFICATION

Surveyed, Location Reliable
Unsurveyed, Location Approximate
Unsurveyed, Protraction
Locked Gate

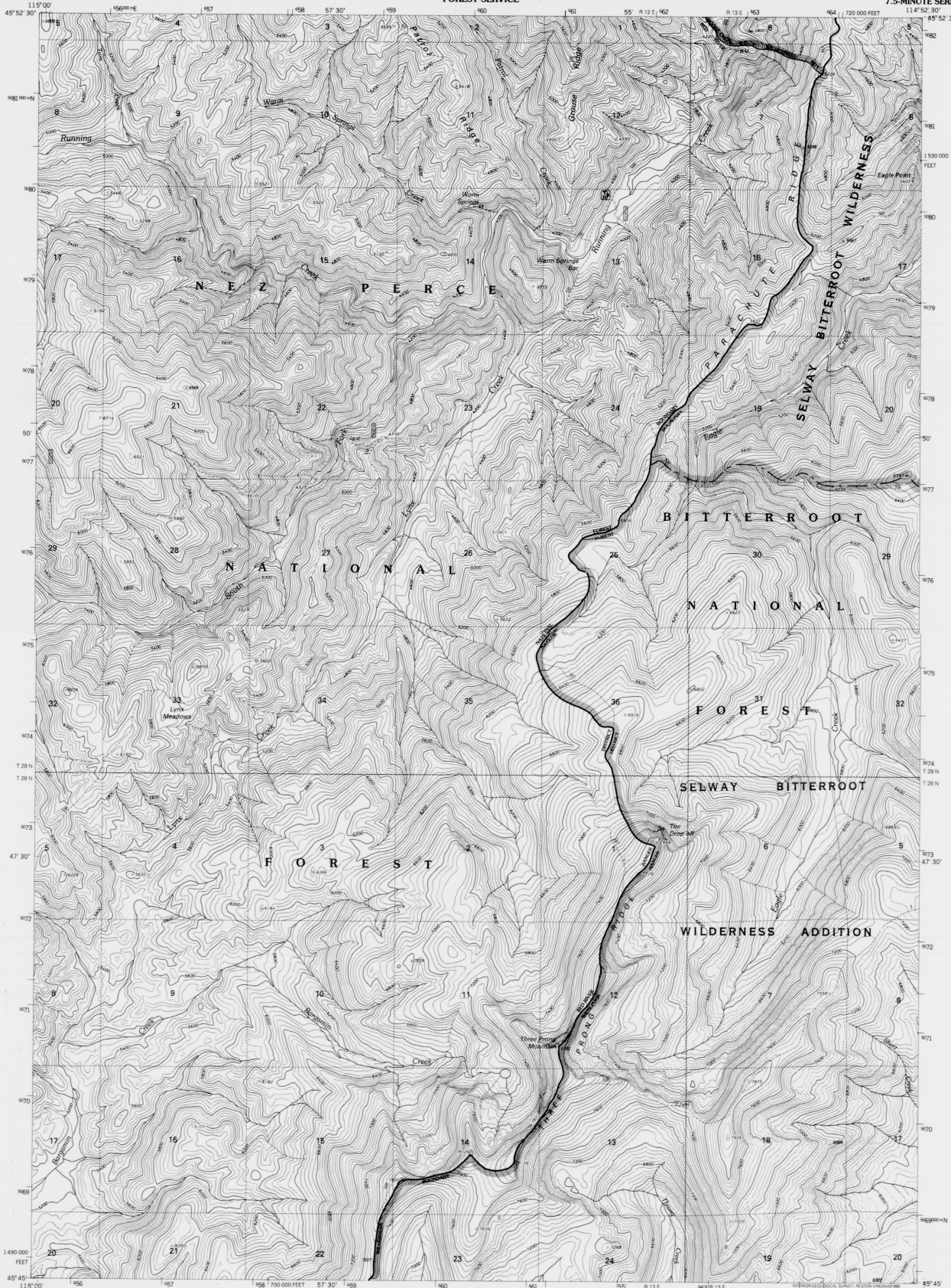
Primary Highway
Secondary Highway
Improved Road, Paved
Improved Road, Gravel
Improved Road, Dirt
Unimproved Road, Dirt
Trail

Interstate Highway
U.S. Highway
State Highway
County Road
Primary Forest Road
Forest Road
Forest Trail

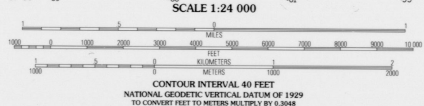
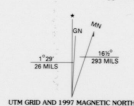
MOUNT GEORGE, IDAHO
N4552.5-W11437.5/7.5
1966
IDMA 3075.1 NW-SERIES Y880
514-2-1-2

BITTERROOT NATIONAL FOREST
QUADRANGLE LOCATION DIAGRAM

1



Produced by the U.S. Geological Survey
Revised by the U.S. Forest Service
Topography compiled 1964. Planimetry derived from imagery taken 1992
Public Land Survey System and survey control current as of 1995. Partial
field check by U.S. Forest Service 1995
North American Datum of 1927 (NAD 27). Projection and 10 000-foot ticks:
Miles coordinate system, west zone (Transverse Mercator)
Blue 1000-meter Universal Transverse Mercator ticks, zone 11
North American Datum of 1983 (NAD 83) is shown by dashed corner ticks
The values of the shift between NAD 27 and NAD 83 for 7.5-minute
intersections are obtainable from National Geodetic Survey NADCON software
Non-National Forest System lands within the National Forest
Inholdings may exist in other National or State reservations
This map is not a legal land title or ownership document. Public lands are
subject to change and leasing, and may have access restrictions; check
with local offices. Obtain permission before entering private lands

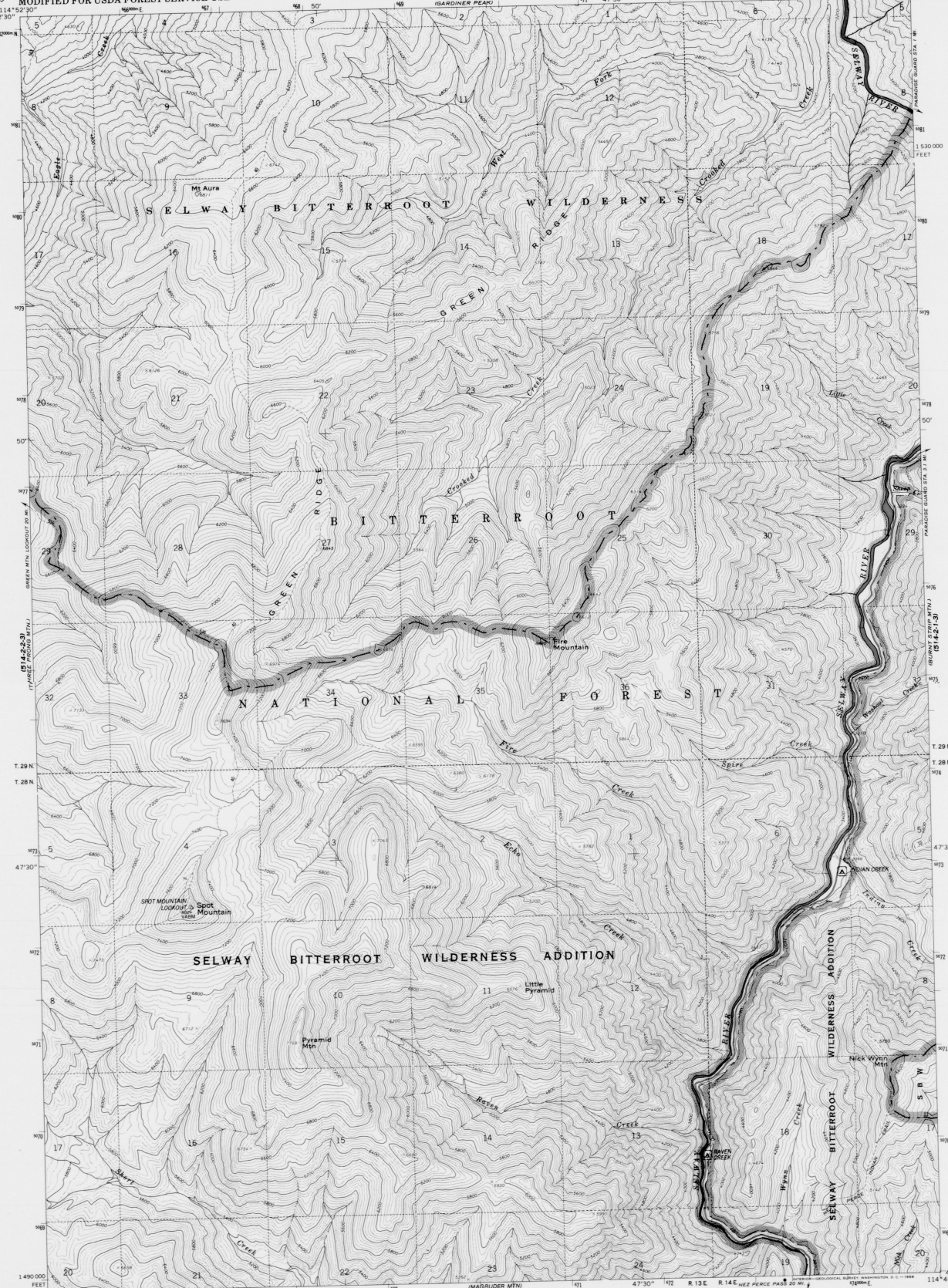


1	2	3	1 Running Lake
4	5	2 Selway Peak	3 Gifford Peak
6	7	4 Green Mountain	5 Spar Mountain
		6 Spruce Creek Point	7 Selway Mountain
		8 Magister Mountain	

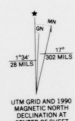
HIGHWAYS AND ROADS	
Interstate	Primary highway
U. S.	Secondary highway
State	Light-duty road
County	Paved
National Forest, suitable for passenger cars	Gravel
National Forest, suitable for high clearance vehicles	Dirt
National Forest Trail	Composition unspecified
	Unimproved, 4 wheel drive
	Trail
	Gate

THIS MAP COMPLIES WITH NATIONAL MAP ACCURACY STANDARDS
FOR SALE BY U.S. GEOLOGICAL SURVEY, P.O. BOX 25286, DENVER, COLORADO 80225
A FOLDER DESCRIBING TOPOGRAPHIC MAPS AND SYMBOLS IS AVAILABLE ON REQUEST

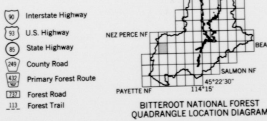
THREE PRONG MOUNTAIN, ID
1995
NIMA 3075 IV SW - SERIES V993



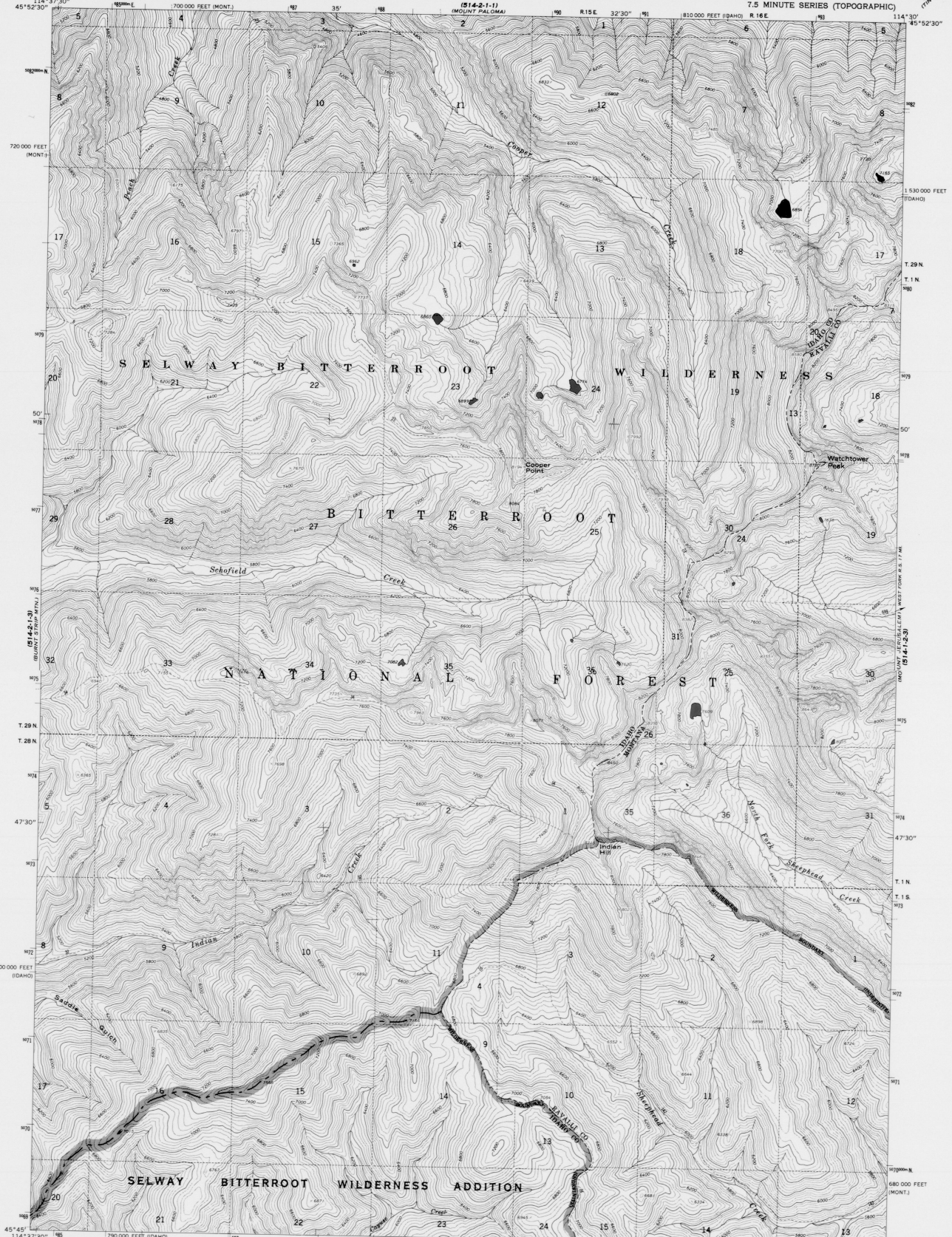
Base map prepared by the U.S. Geological Survey
Control by USGS and USC&GS
Topography by photogrammetric methods from aerial
photographs taken 1964. Field checked 1966.
Polyconic projection. 1927 North American datum.
10,000-foot grid based on Idaho coordinate system,
west zone.
1000-meter Universal Transverse Mercator grid ticks,
zone 11, shown in blue.
Modification to USGS base map by the Geomatrix Service
Center from 1984-1987 aerial photography and 1988 correction
guides furnished by the Northern Region.
Landnet revised according to additional Forest Service evidence.



- CONTOUR INTERVAL 40 FEET
DOTTED LINES CROSSING RIVERS REPRESENT 20-FOOT CONTOURS
DATUM IS MEAN SEA LEVEL
- | TOWNSHIP AND SECTION LINE CLASSIFICATION | ROAD CLASSIFICATION |
|--|-----------------------|
| National Forest Boundary | Improved Road, Paved |
| Non-Forest Land as of 1988 | Improved Road, Gravel |
| Surveyed, Location Reliable | Improved Road, Dirt |
| Surveyed, Location Approximate | Unimproved Road, Dirt |
| Unsurveyed, Protection | Trail |
| Locked Gate | |



SPOT MOUNTAIN, IDAHO
N4545-W1445/7.5
1966
DMA 2015 IS SE-SERIES 1988
514-2-2-4

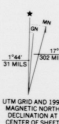


Base map prepared by the U.S. Geological Survey

Control by USGS and USGS

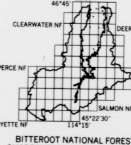
Topography by photogrammetric methods from aerial photographs taken 1964. Field checked 1966
Polyconic projection. 1927 North American datum
10,000-foot grids based on Idaho coordinate system,
west zone, and Montana coordinate system, south zone
1000-meter Universal Transverse Mercator grid ticks,
zone 11, shown in blue

Modification to USGS base map by the Geomatics Service
Center from 1984-1987 aerial photography and 1988 correction
guides furnished by the Northern Region
Landnet revised according to additional Forest Service evidence



- CONTAINMENT INTERVAL 40 FEET**
DATUM IS MEAN SEA LEVEL
- National Forest Boundary
 - Non Forest Land as of 1988
 - TOWNSHIP AND SECTION LINE CLASSIFICATION
 - Surveyed, Location Reliable
 - Surveyed, Location Approximate
 - Unsurveyed, Protraction
 - Locked Gate
 - Primary Highway
 - Secondary Highway
 - Improved Road, Paved
 - Improved Road, Gravel
 - Improved Road, Dirt
 - Unimproved Road, Dirt
 - Trail

- Interstate Highway
- U.S. Highway
- State Highway
- County Road
- Primary Forest Road
- Forest Road
- Forest Trail



WATCHTOWER PEAK, IDAHO-MONT.

N4545-W11430/7.5

1966

DNR 8075 138-SERIES 1988

514-2-1-4

UNITED STATES
DEPARTMENT OF THE INTERIOR
GEOLOGICAL SURVEY
MODIFIED FOR USDA FOREST SERVICE USE

NEZ PERCE PEAK QUADRANGLE
IDAHO-MONTANA
7.5 MINUTE SERIES (TOPOGRAPHIC)



Base map prepared by the U.S. Geological Survey

Control by USGS and USCGS

Topography by photogrammetric methods from aerial

photographs taken 1957. Flwd checked 1962

Polyconic projection. 1927 North American datum.

10,000-foot grid based on Idaho coordinate system, west zone, and Montana coordinate system, south zone.

1000-meter Universal Transverse Mercator grid ticks, zone 11, shown in blue.

Modification to USGS base map by the Geomatrix Service

Center from 1984 1987 aerial photography and 1988 correction

guides furnished by the Northern Region

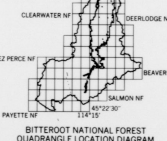
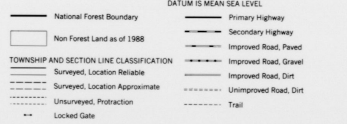
Landnet revised according to additional Forest Service evidence



UTM GRID AND 1990
MAGNETIC NORTH
DECLINATION AT
CENTER OF SHEET

CONTOUR INTERVAL 40 FEET
DATUM IS MEAN SEA LEVEL

SCALE 1:24,000



NEZ PERCE PEAK, IDAHO-MONT.

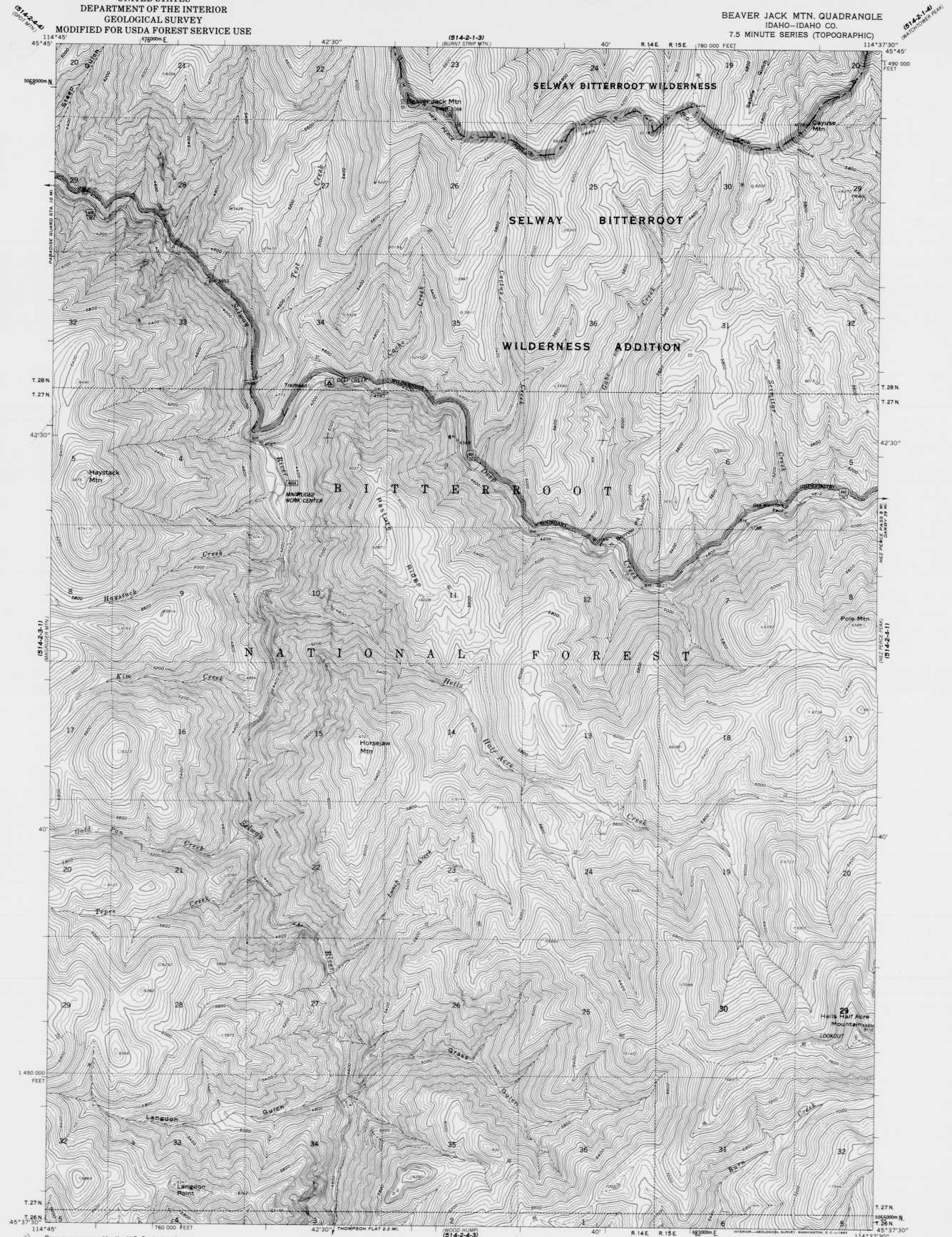
N4537.5-W11430.7/5

1962

514-2-4-1

UNITED STATES
DEPARTMENT OF THE INTERIOR
GEOLOGICAL SURVEY
MODIFIED FOR USDA FOREST SERVICE USE

BEAVER JACK MTN. QUADRANGLE
IDAHO-IDAHO CO.
7.5 MINUTE SERIES (TOPOGRAPHIC)

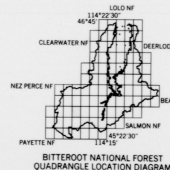


Base map prepared by the U.S. Geological Survey
Control by USGS and USCAGS
Topography by photogrammetric methods from aerial
photographs taken 1957. Field checked 1962
Polyconic projection, 1927 North American datum
10,000-foot grid based on Idaho coordinate system, west zone
1000-meter Universal Transverse Mercator grid ticks,
zone 11, shown in blue
Modification to USGS base map by the Geomatrix Service
Center from 1984-1987 aerial photography and 1988 correction
guides furnished by the Northern Region
Landnet revised according to additional Forest Service evidence



- CONTOUR INTERVAL 40 FEET**
SATURN IS MEAN SEA LEVEL
SCALE 1:24,000
- | | |
|--|-------------------------|
| — National Forest Boundary | — Primary Highway |
| □ Non Forest Land as of 1988 | — Secondary Highway |
| — Township and Section Line Classification | — Improved Road, Paved |
| — Surveyed, Location Reliable | — Improved Road, Gravel |
| — Surveyed, Location Approximate | — Improved Road, Dirt |
| — Unsurveyed, Protraction | — Unimproved Road, Dirt |
| — Locked Gate | — Trail |

- | |
|-----------------------|
| — Interstate Highway |
| — U.S. Highway |
| — State Highway |
| — County Road |
| — Primary Forest Road |
| — Forest Road |
| — Forest Trail |

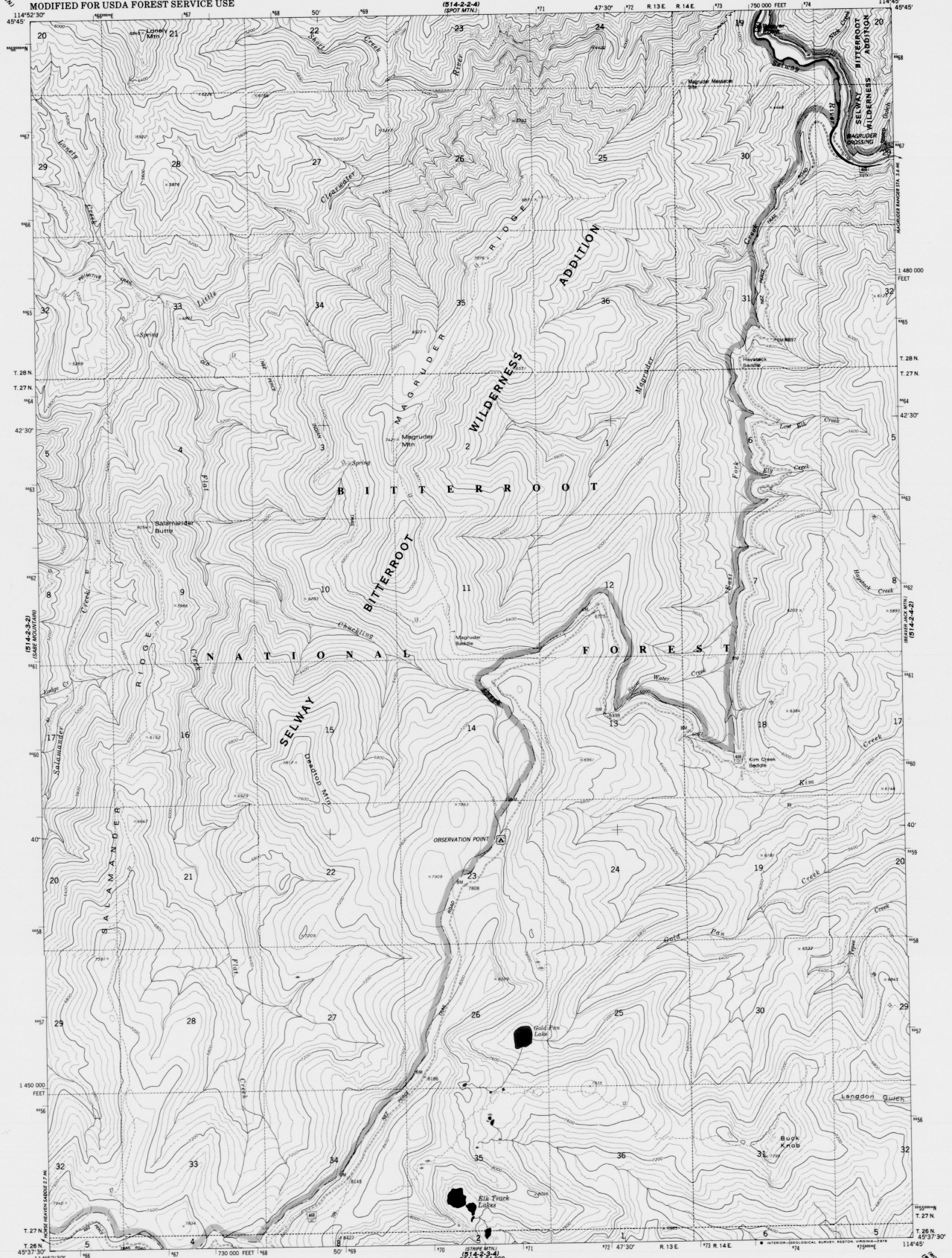


BEAVER JACK MTN., IDAHO
N4537.5-W11437.5/7.5
1962
514-2-4-2

UNITED STATES
DEPARTMENT OF THE INTERIOR
GEOLOGICAL SURVEY
MODIFIED FOR USDA FOREST SERVICE USE

MAGRUDER MTN. QUADRANGLE
IDAHO
7.5 MINUTE SERIES (TOPOGRAPHIC)

(514-2-30)
(BUTTE TRIP MOUNTAIN)

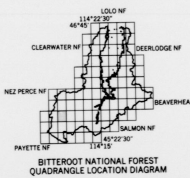


Base map prepared by the U.S. Geological Survey
Control by USGS and NOS/NIMA
Topography by photogrammetric methods from aerial
photographs taken 1972. Field checked 1974
Map edited 1978
Projection and 10,000-foot grid ticks: Idaho coordinate
system, west zone (Transverse Mercator)
1000-meter Universal Transverse Mercator grid ticks,
zone 11, shown in blue. 1927 North American datum.
Modification to USGS base map by the Geomatics Service
Center from 1984-1987 aerial photography and 1988 correction
guides furnished by the Northern Region
Landmark revised according to additional Forest Service evidence

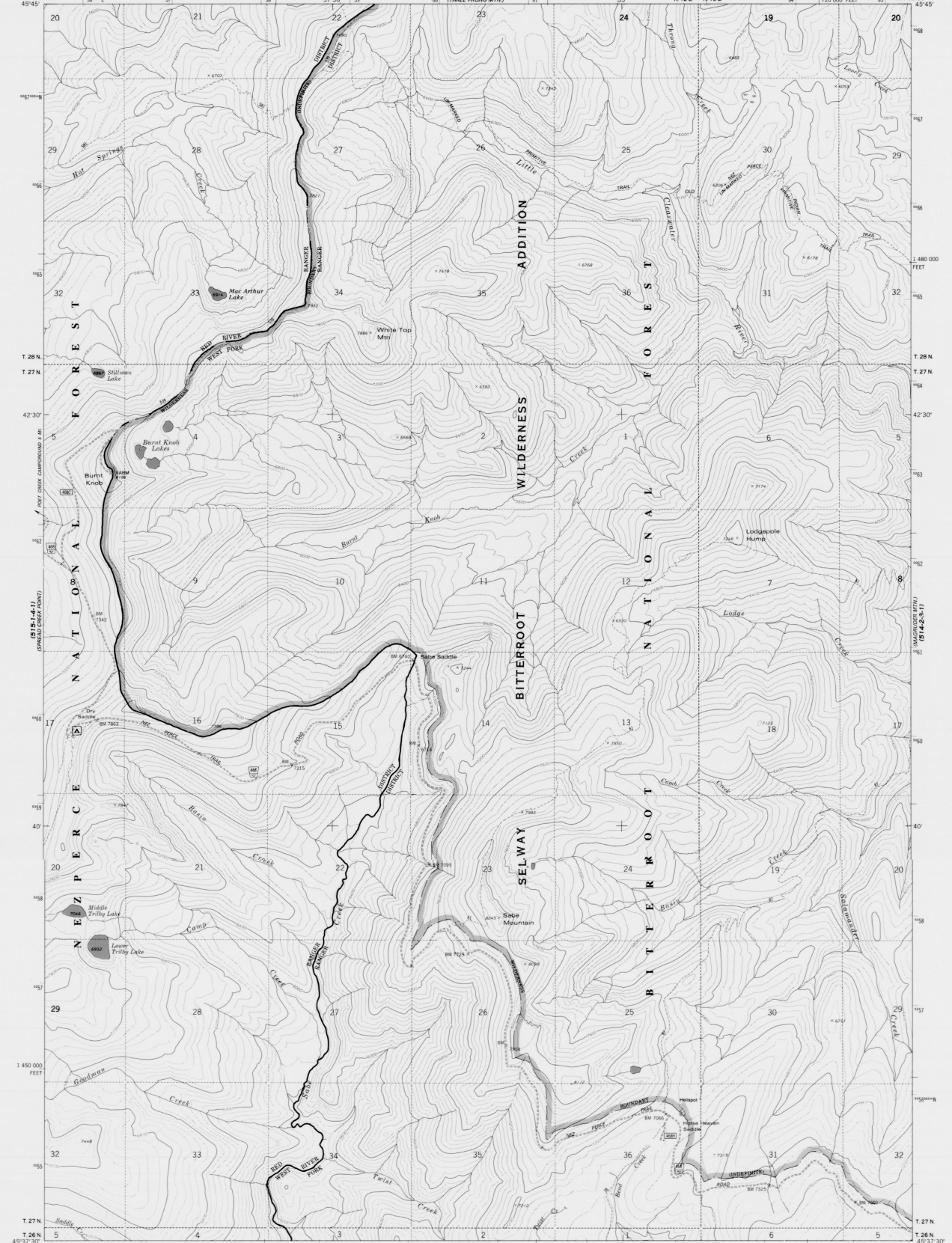


- CONTOUR INTERVAL 80 FEET
NATIONAL GEODETIC DATUM OF 1929
- | | |
|--|-------------------------|
| — National Forest Boundary | — Secondary Highway |
| — Non Forest Land as of 1988 | — Improved Road, Paved |
| — Township and Section Line Classification | — Improved Road, Gravel |
| — Surveyed, Location Reliable | — Improved Road, Dirt |
| — Surveyed, Location Approximate | — Unimproved Road, Dirt |
| — Unsurveyed, Protraction | — Trail |
| — Locked Gate | |

- Interstate Highway
- U.S. Highway
- State Highway
- County Road
- Primary Forest Road
- Forest Road
- Forest Trail



MAGRUDER MTN., IDAHO
N45375-W14457.5
1978
DMA 5075 III (N)-SERIES V885
514-2-3-1



Base map prepared by the U.S. Geological Survey
Control by USGS and NOS/NOAA
Topography by photogrammetric methods from aerial
photographs taken 1972. Field checked 1974. Map edited 1979
Projection and 10,000-foot grid ticks, Idaho coordinate
system, west zone (transverse Mercator)
1000-meter Universal Transverse Mercator grid ticks,
zone 11, shown in blue. 1927 North American datum
Modification to USGS base map by the Geomatics Service
Center from 1984-1987 aerial photography and 1988 correction
guides furnished by the Northern Region
Landnet revised according to additional Forest Service evidence

UTM GRID AND 1990
MAGNETIC NORTH
DECLINATION AT
CENTER OF SHEET

CONTOUR INTERVAL 80 FEET
NATIONAL GEOGRAPHIC DATUM OF 1929
SCALE 1:24,000

National Forest Boundary

Non Forest Land as of 1988

TOWNSHIP AND SECTION LINE CLASSIFICATION

Surveyed, Location Approximate

Unsurveyed, Protraction

Locked Gate

Primary Highway

Secondary Highway

Improved Road, Paved

Improved Road, Gravel

Improved Road, Dirt

Unimproved Road, Dirt

Trail

Interstate Highway

U.S. Highway

State Highway

County Road

Primary Forest Route

Forest Road

Forest Trail

015-1-4-11
(SABE MTN.)
(SABE MTN.)

014-2-3-31
(THREE PRONG MTN.)
(THREE PRONG MTN.)

014-2-3-31
(THREE PRONG MTN.)
(THREE PRONG MTN.)

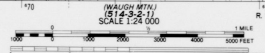
015-1-4-11
(SABE MTN.)
(SABE MTN.)

014-2-3-31
(THREE PRONG MTN.)
(THREE PRONG MTN.)

014-2-3-31
(THREE PRONG MTN.)
(THREE PRONG MTN.)

SABE MTN., IDAHO
N45375-W114525/5
1979
DMA 3075 III NW-SERIES V880
514-2-3-2

9



Modification to USGS base map by the Geometronics Service Center from 1984-1987 aerial photography and 1988 correction guides furnished by the Northern Region

Landnet revised according to additional Forest Service evidence

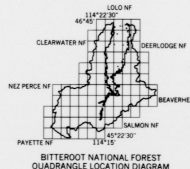
NATIONAL FOREST BOUNDARY
 _____ National Forest Boundary
 □ Non Forest Land as of 1988

TOWNSHIP AND SECTION LINE CLASSIFICATION
 _____ Surveyed, Location Reliable
 _____ Surveyed, Location Approximate
 _____ Unsurveyed, Protraction
 _____ Locked Gate

ECODEOTIC VERTICAL DATUM OF 1929

- Primary Highway
- Secondary Highway
- Improved Road, Paved
- Improved Road, Gravel
- Improved Road, Dirt
- Unimproved Road, Dirt
- Trail

	Interstate Highway
	U.S. Highway
	State Highway
	County Road
	Primary Forest Road
	Forest Road
	Forest Trail



STRIPED MTN., IDAHO
N4530—W11445/7.5
1979

DMA 3075 III SE-SERIES V893
514-2-3-4