

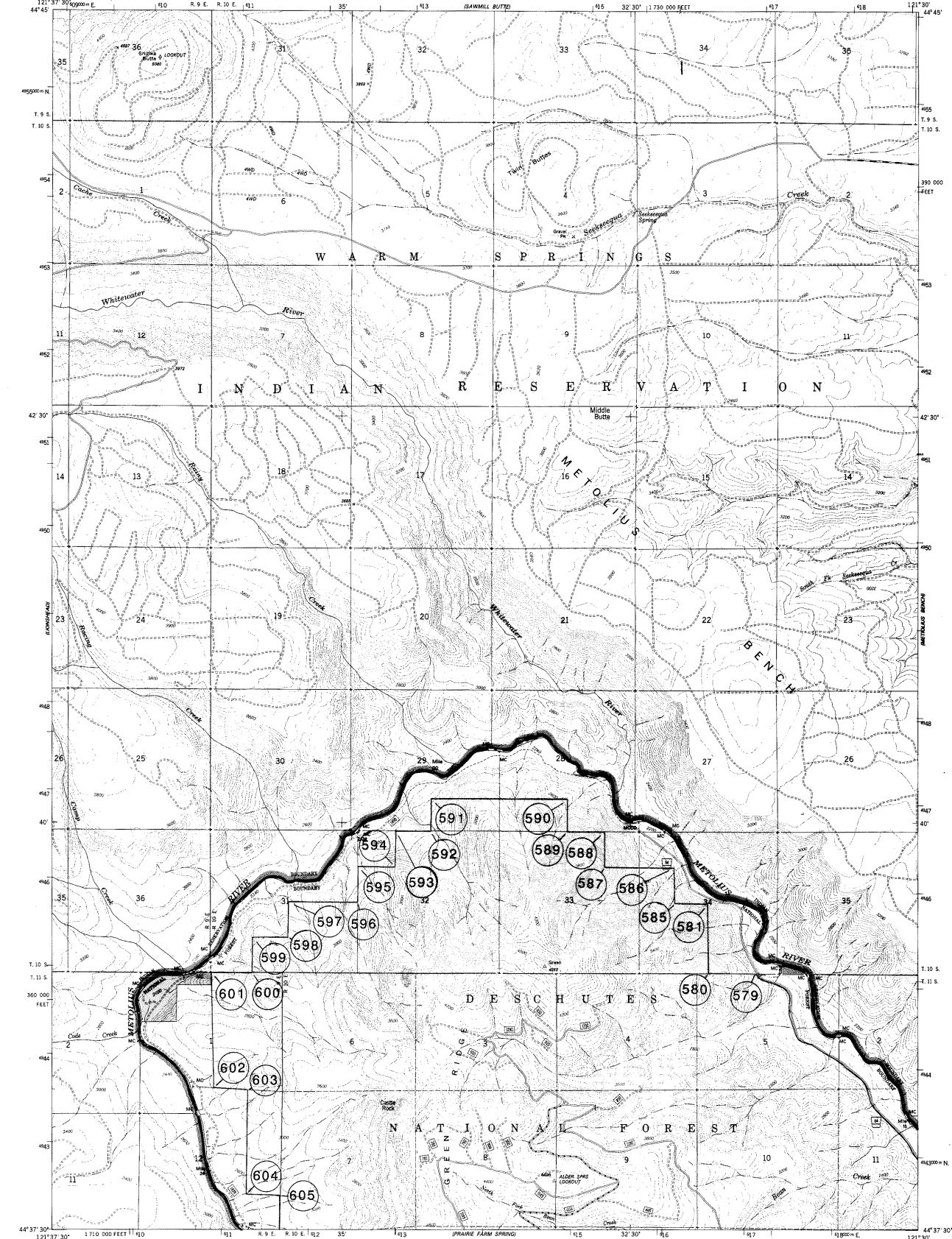
## Metolius

Quad sheet names refer to U.S.G.S. 7-1/2 minute topographic quadrangle maps and include the following:

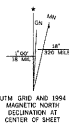
Shitike Butte.....	Map No. 1
Metolius Bench.....	Map No. 2
Fly Creek.....	Map No. 3
Prairie Farm Spring.....	Map No. 4
Candle Creek.....	Map No. 5
Black Butte.....	Map No. 6

UNITED STATES  
DEPARTMENT OF THE INTERIOR  
GEOLOGICAL SURVEY  
MODIFIED FOR USDA FOREST SERVICE USE

SHITIKE BUTTE QUADRANGLE  
OREGON - JEFFERSON CO.  
7.5 MINUTE SERIES (TOPOGRAPHIC)



Provisional base map prepared by the U.S. Geological Survey  
Control by USGS and NGS/NOAA  
Topography by photogrammetric methods from  
aerial photographs taken 1958. Field checked 1961  
Limited revision from aerial photographs taken 1982  
and 1984. Field checked 1985. Map edited 1988  
Polyconic projection. 1927 North American Datum  
10,000-foot grid based on Oregon coordinate system  
north zone  
1000-meter Universal Transverse Mercator grid ticks, zone 10  
NATIONAL GEODETIC VERTICAL DATUM OF 1929  
The Geomatics Service Center has regenerated  
all map information, with the exception of  
contours, using digital procedures. Modifications  
to USGS map base made using 1991 ortho  
photography and 1993 correction guide, furnished  
by the Pacific Northwest Region.  
Landnet revised according to additional Forest Service evidence



— National Forest Boundary  
— Allotment Land within the National Forest  
Boundary as of 1993  
TOWNSHIP AND SECTION LINE CLASSIFICATION  
— Surveyed, Location Reliable  
— Surveyed, Location Approximate  
— Surveyed, Location Questionable  
— Unsurveyed, Protection  
— Primary Highway  
— Secondary Highway  
— Improved Road, Paved  
— Improved Road, Gravel  
— Improved Road, Dirt  
— Unimproved Road  
— Trail  
— Locked Gate

— Interstate  
— U.S. Highway  
— State Highway  
— County Road  
— Primary Forest Route  
— Forest Road  
— Forest Trail



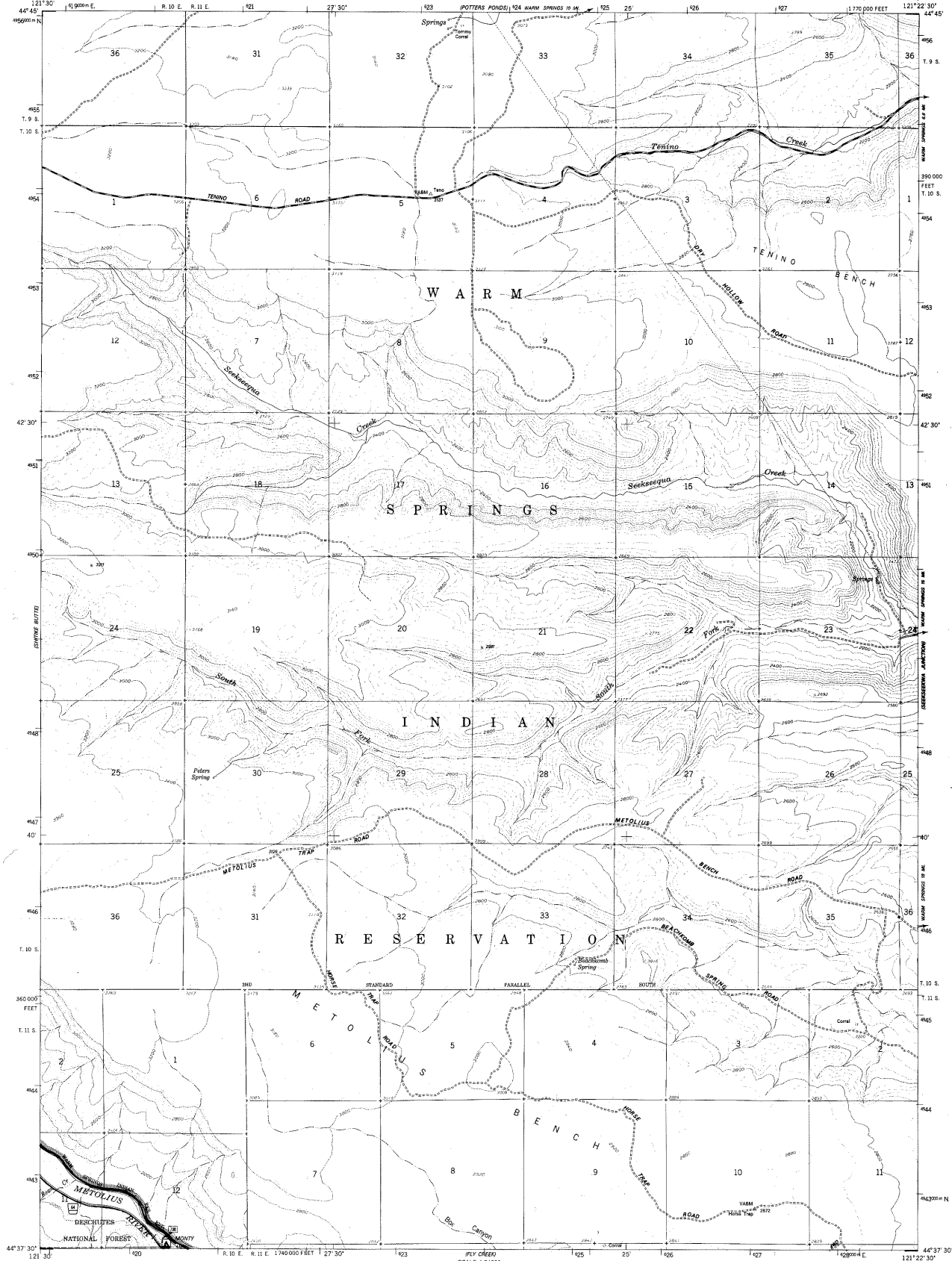
SHITIKE BUTTE QUAD  
MAP 1 OF 6

SHITIKE BUTTE, OREGON  
N4437.5-W12130 / 7.5  
PROVISIONAL EDITION 1988  
FS REVISED 1993

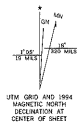
ATTN: Road ticks indicate change between portions  
photo-identified and portions not visible on the aerial photography.  
Portions not visible will be labeled "LOCATION APPROXIMATE."

UNITED STATES  
DEPARTMENT OF THE INTERIOR  
GEOLOGICAL SURVEY  
MODIFIED FOR USDA FOREST SERVICE USE

METOLIUS BENCH QUADRANGLE  
OREGON - JEFFERSON CO.  
7.5 MINUTE SERIES (TOPOGRAPHIC)



Base map prepared by the U.S. Geological Survey  
Control by USGS and USCGS  
Topography by photogrammetric methods from  
aerial photographs taken 1957. Field checked 1962  
Polyconic projection, 1927 North American Datum  
10,000-foot grid based on Oregon coordinate system,  
north zone  
1000-meter Universal Transverse Mercator grid ticks, zone 10  
NATIONAL GEODETIC VERTICAL DATUM OF 1929  
The Geomatics Service Center has regenerated  
all map information, with the exception of  
contours, utilizing digital procedures. Modifications  
to USGS map base made using 1991 ortho  
photography and 1993 correction guide, furnished  
by the Pacific Northwest Region.  
Fine dashed lines indicate selected fence lines  
Linnet revised according to additional Forest Service evidence



**TOWNSHIP AND SECTION LINE CLASSIFICATION**

— National Forest Boundary	— Primary Highway
— Alienated Land within the National Forest Boundary as of 1993	— Secondary Highway
— Surveyed, Location Reliable	— Improved Road, Paved
— Surveyed, Location Approximate	— Improved Road, Gravel
— Surveyed, Location Questionable	— Improved Road, Dirt
— Unsurveyed, Protraction	— Unimproved Dirt
	— Trail
	— Locked Gate

**ADJACENT QUADRANGLE LOCATION DIAGRAM**

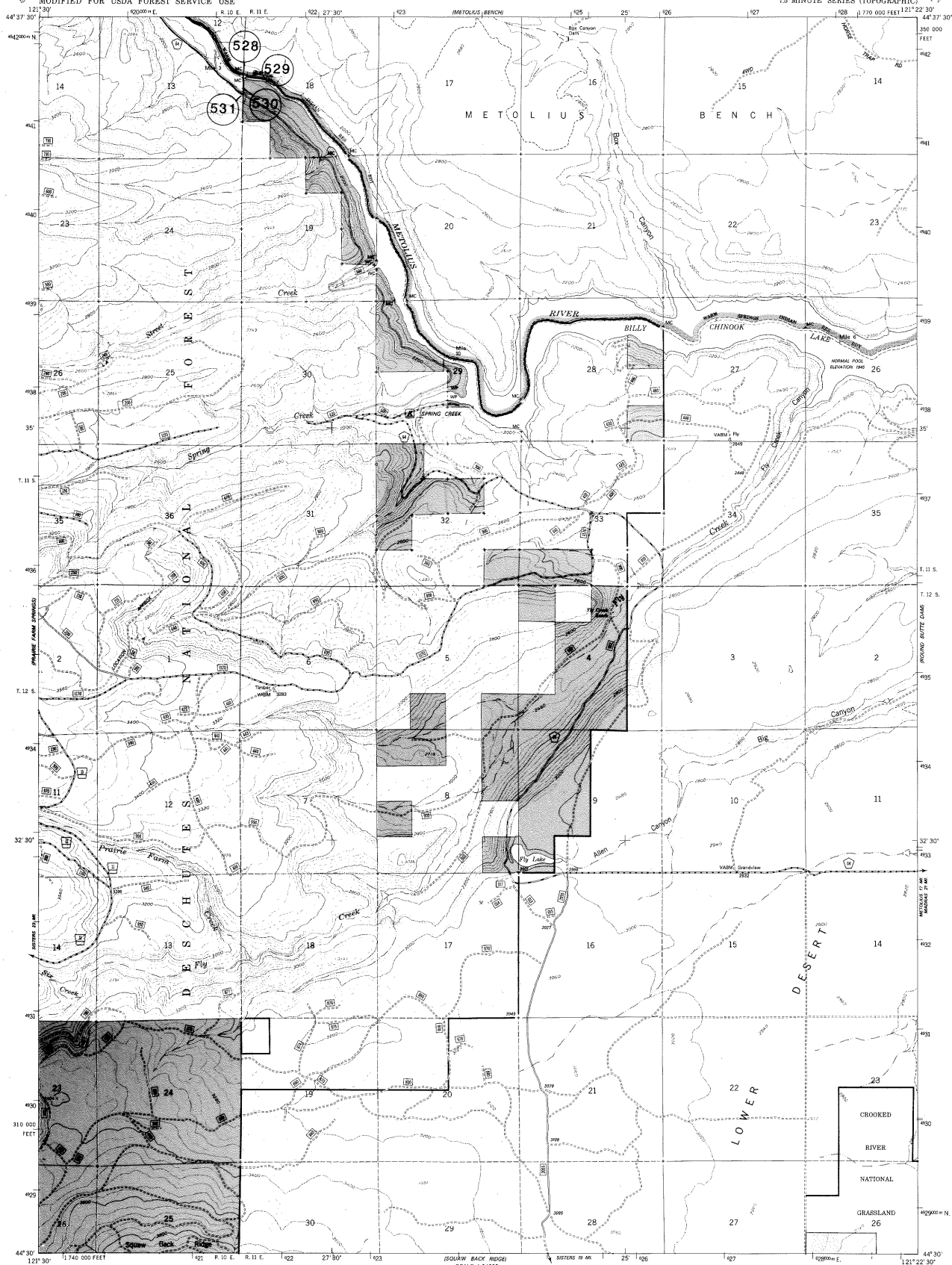
10N 10E	10N 11E	10N 12E
9N 10E	9N 11E	9N 12E
8N 10E	8N 11E	8N 12E

Legend for road types:  
 Interstate  
 U.S. Highway  
 State Highway  
 County Road  
 Primary Forest Route  
 Forest Road  
 Forest Trail

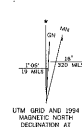
**METOLIUS BENCH QUAD  
MAP 2 OF 6**

METOLIUS BENCH, OREGON  
N4437.5-W1222.5 / 7.5  
1962  
FS REVISED 1993

ATTN: Road ticks indicate change between portions  
photo-identified and portions not visible on the aerial photography.  
Portions not visible will be labeled 'LOCATION APPROXIMATE'.

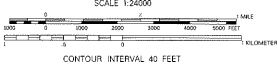


Mapped, edited, and published by the Geological Survey  
Control by USGS and USFWS  
Topography by photogrammetric methods from  
aerial photographs taken 1957. Field checked 1962  
1962. Limited revision from aerial photographs taken  
1975 and 1976  
Polyconic projection, 1927 North American Datum  
10,000-foot grid based on Oregon coordinate system  
North zone  
1200-meter Universal Transverse Mercator grid ticks, zone 10  
NATIONAL GEODETIC VERTICAL DATUM OF 1929  
The Geomatics Service Center has regenerated  
all map information, with the exception of  
contours, utilizing digital procedures. Modifications  
to USGS map base made using 1991 ortho  
photography and 1993 correction guide, furnished  
by the Pacific Northwest Region.  
Landnet revised according to additional Forest Service evidence



**TOWNSHIP AND SECTION LINE CLASSIFICATION**

- National Forest Boundary
- Alienated Land within the National Forest Boundary as of 1993
- Surveyed, Location Reliable
- Surveyed, Location Approximate
- Surveyed, Location Questionable
- Unsurveyed, Protraction
- Primary Highway
- Secondary Highway
- Improved Road, Paved
- Improved Road, Gravel
- Improved Road, Dirt
- Unimproved Dirt
- Trail
- Locked Gate

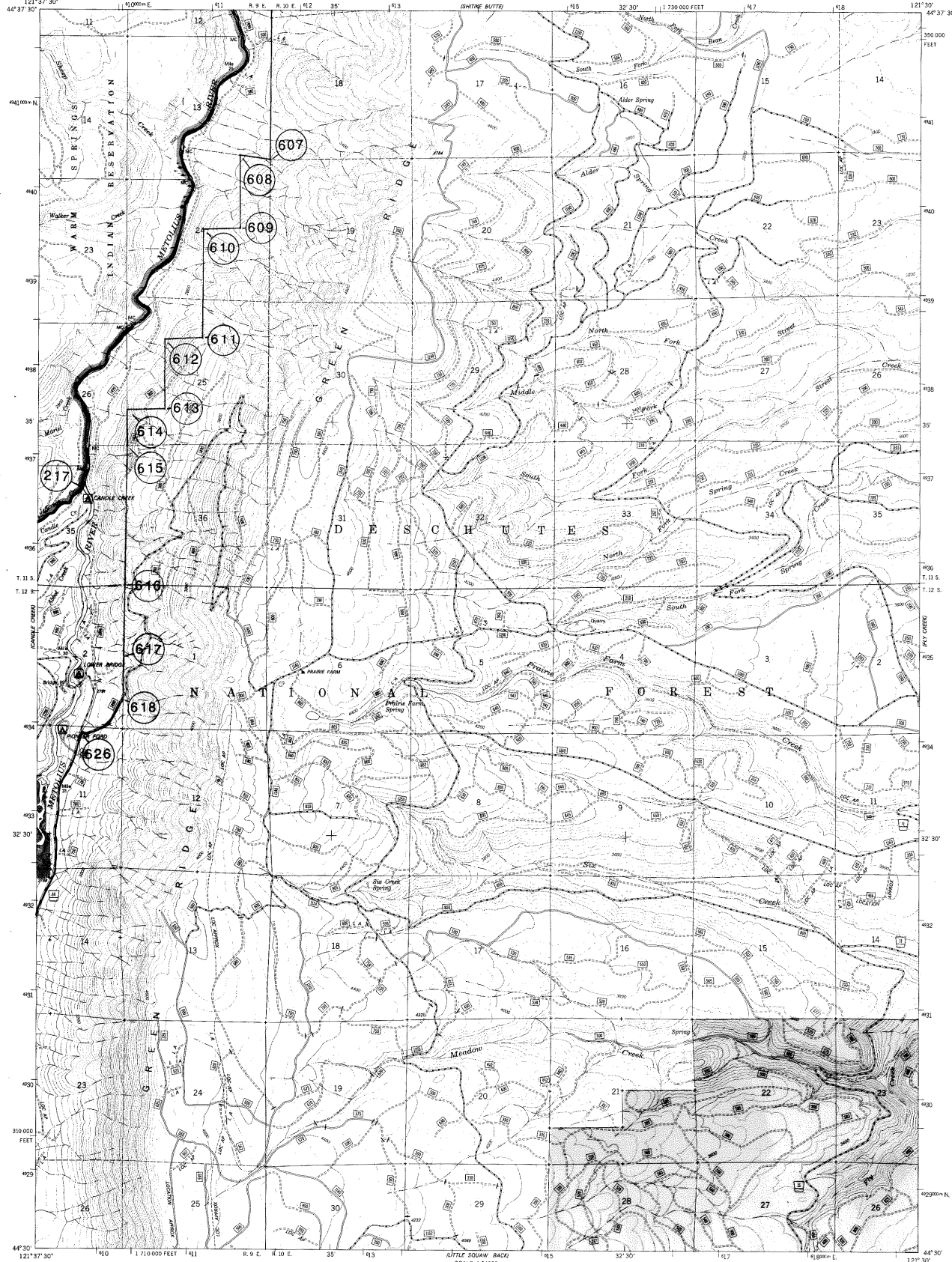


Interstate  
U. S. Highway  
State Highway  
County Road  
Primary Forest Road  
Forest Road  
Forest Trail



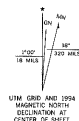
**FLY CREEK QUAD**  
**MAP 3 OF 6**  
FLY CREEK, OREGON  
N4430-W12122.5 / 7.5  
1962  
FS REVISED 1993

ATTN: Road ticks indicate change between portions  
photo-identified; and portions not visible on the aerial photography.  
Portions not visible will be labeled 'LOCATION APPROXIMATE'.



Provisional base map prepared by the U.S. Geological Survey

Control by USGS and 1965 NAD84  
Topography by photogrammetric methods from  
aerial photographs taken 1958. Field checked 1963  
Limited revision from aerial photographs taken 1964  
Field checked 1965. Map edited 1968  
Polyconic projection. 1927 North American Datum  
10,000-foot grid based on Oregon coordinate system  
north zone  
1000-meter Universal Transverse Mercator grid ticks, zone 10  
NATIONAL GEODETIC VERTICAL DATUM OF 1929  
The Geomatics Service Center has regenerated  
all map information with the exception of  
contours, utilizing digital procedures. Modifications  
to USGS map base made using 1991 ortho  
photography and 1993 correction grids, furnished  
by the Pacific Northwest Region.  
Landnet revised according to additional Forest Service evidence



**TOWNSHIP AND SECTION LINE CLASSIFICATION**

- National Forest Boundary
- Alienated Land within the National Forest Boundary as of 1993
- Surveyed, Location Reliable
- Surveyed, Location Approximate
- Surveyed, Location Questionable
- Unsurveyed, Protraction

**ROAD CLASSIFICATION**

- Primary Highway
- Secondary Highway
- Improved Road, Paved
- Improved Road, Gravel
- Improved Road, Dirt
- Unimproved Road
- Trail
- Locked Gate

**OTHER FEATURES**

- Interstate
- U.S. Highway
- State Highway
- County Road
- Primary Forest Road
- Forest Road
- Forest Trail

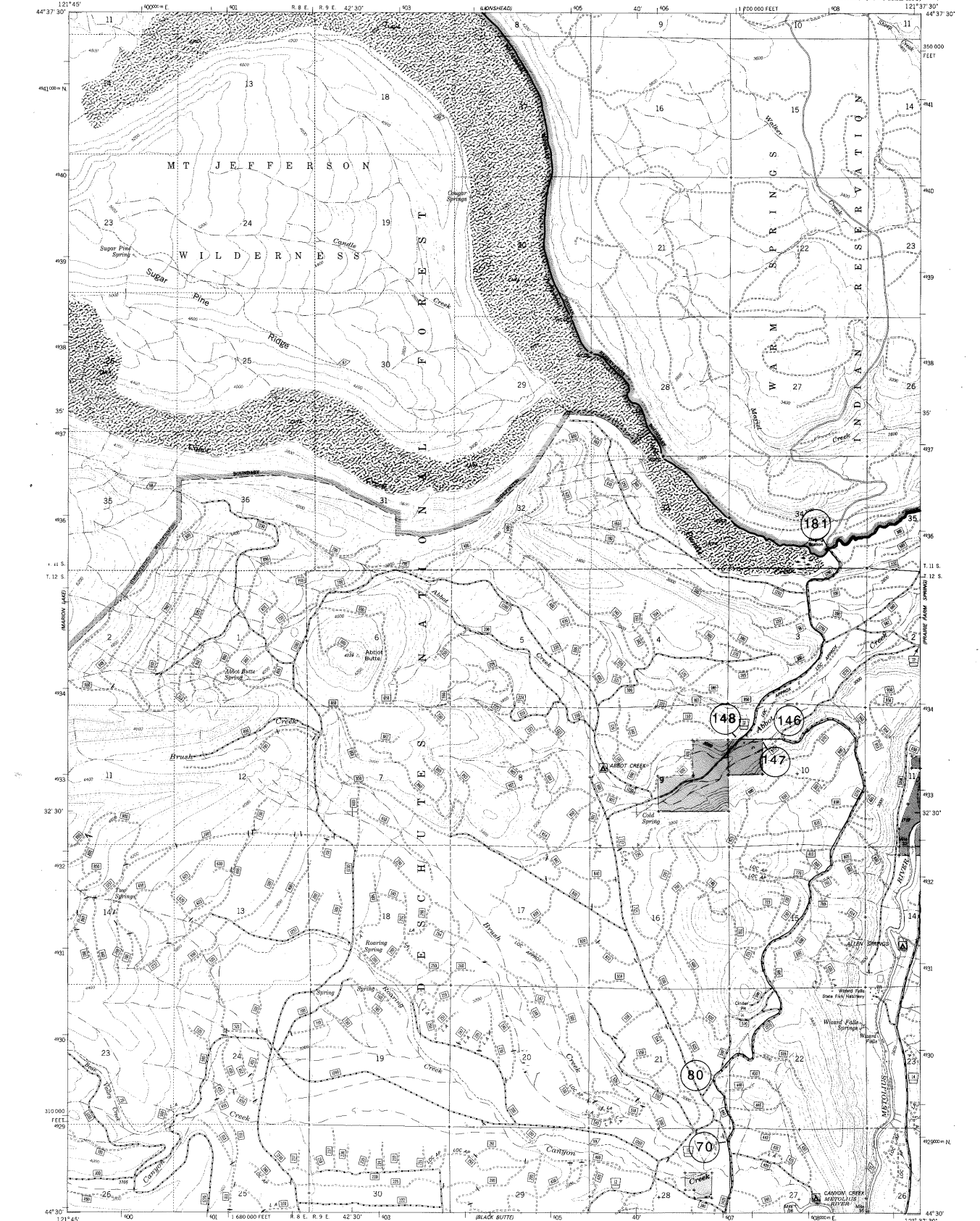
Symbol	Description
—	Interstate
—	U.S. Highway
—	State Highway
—	County Road
—	Primary Forest Road
—	Forest Road
—	Forest Trail

## PRAIRIE FARM SPRING QUAD MAP 4 OF 6

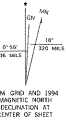
PRAIRIE FARM SPRING, OREG.

N4430-W1230 / 7.5  
PROVISIONAL EDITION 1988  
FS REVISED 1993

ATTN: Road ticks indicate change between portions  
photo-identified and portions not visible on the aerial photography.  
Portions not visible will be labeled 'LOCATION APPROXIMATE'.



Provisional base map prepared by the U.S. Geological Survey  
Control by USGS and NOS/NOAA  
Topography by photogrammetric methods from  
aerial photographs taken 1958. Field checked 1961.  
Limited revision from aerial photographs taken 1979,  
1981, 1982, 1984. Field checked 1985. Map edited 1988.  
Polyconic projection. 1927 North American Datum  
10,000-foot grid based on Oregon coordinate system  
north zone  
1000-meter Universal Transverse Mercator grid ticks, zone 10  
NATIONAL GEODETIC VERTICAL DATUM OF 1929  
The Geodetic Service Center has reprojected  
all map information, with the exception of  
contours, utilizing digital procedures. Modifications  
to USGS map base made using 1991 ortho  
photography and 1993 correction guide, furnished  
by the Pacific Northwest Region.  
Landmark revised according to additional Forest Service evidence



- TOPOGRAPHIC SYMBOLS
- National Forest Boundary
  - Altered Land within the National Forest Boundary as of 1993
  - Surveyed, Location Reliable
  - Surveyed, Location Approximate
  - Surveyed, Location Questionable
  - Unsurveyed, Probation
  - Primary Highway
  - Secondary Highway
  - Improved Road, Paved
  - Improved Road, Gravel
  - Improved Road, Dirt
  - Unimproved Dirt
  - Trail
  - Locked Gate

- ROADS
- Interstate
  - U.S. Highway
  - State Highway
  - County Road
  - Primary Forest Road
  - Forest Road
  - Forest Trail

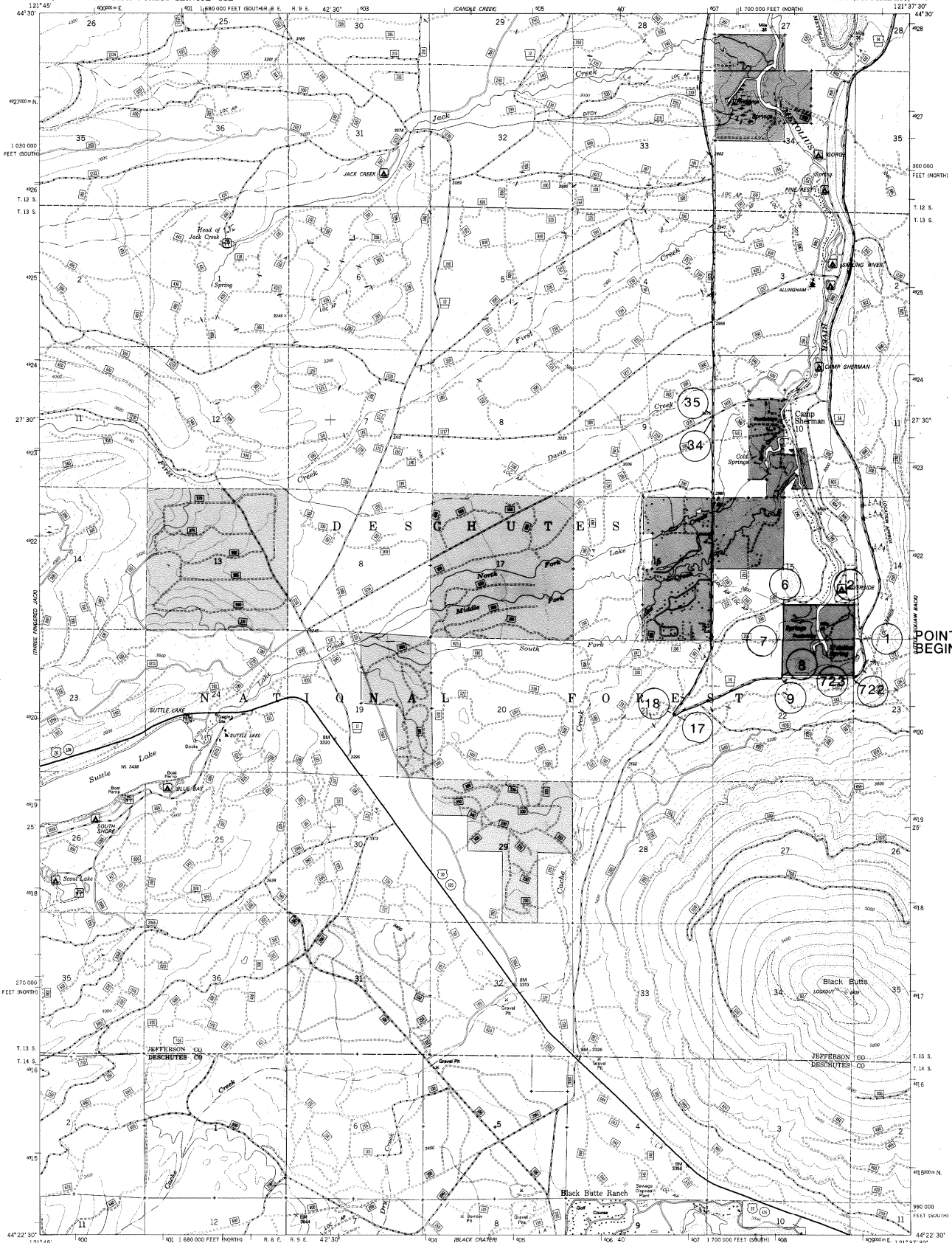


# CANDLE CREEK QUAD MAP 5 OF 6

CANDLE CREEK, OREGON  
N4430-W12137.5 / 7.5  
PROVISIONAL EDITION 1988  
FS REVISED 1993

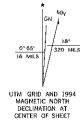
ATTN: Road ticks indicate change between portions  
photo-identified and portions not visible on the aerial photography.  
Portions not visible will be labeled "LOCATION APPROXIMATE."





POINT OF BEGINNING

Provisional base map prepared by the U.S. Geological Survey  
Control by USGS, NOS / NOAA and State of Oregon  
Topography by photogrammetric methods from  
aerial photographs taken 1957. Field checked 1959.  
Limited revision from aerial photographs taken 1961,  
1962, 1964. Field checked 1985. Map edited 1988.  
Polyconic projection, 1927 North American Datum  
10,000-foot grid based on Oregon coordinate system  
north and south zones.  
2000-meter Universal Transverse Mercator grid ticks, zone 10  
NATIONAL GEODETIC VERTICAL DATUM OF 1929  
The Geomatics Service Center has regenerated  
all map information with the exception of  
contours, utilizing digital procedures. Modifications  
to USGS map base made using 1991 ortho  
photography and 1993 correction grids furnished by  
the Pacific Northwest Region.  
Landmark revised according to additional Forest Service evidence



CONTOUR INTERVAL 40 FEET  
SUPPLEMENTARY CONTOUR INTERVAL 20 FEET

TOWNSHIP AND SECTION LINE CLASSIFICATION

- National Forest Boundary
- Surveyed, Location Reliable
- Surveyed, Location Approximate
- Surveyed, Location Questionable
- Unsurveyed, Protection
- Primary Highway
- Secondary Highway
- Improved Road, Paved
- Improved Road, Gravel
- Improved Road, Dirt
- Unimproved Dirt
- Trail
- Locked Gate

Interstate  
U.S. Highway  
State Highway  
County Road  
Primary Forest Route  
Forest Road  
Forest Trail



# BLACK BUTTE QUAD MAP 6 OF 6

BLACK BUTTE, OREGON

N4422.5-W12137.5 / 7.5  
PROVISIONAL EDITION 1988  
FS REVISED 1993

ATTN: Road ticks indicate change between portions  
photo-certified and portions not visible on the aerial photography.  
Portions not visible will be labeled "LOCATION APPROXIMATE."