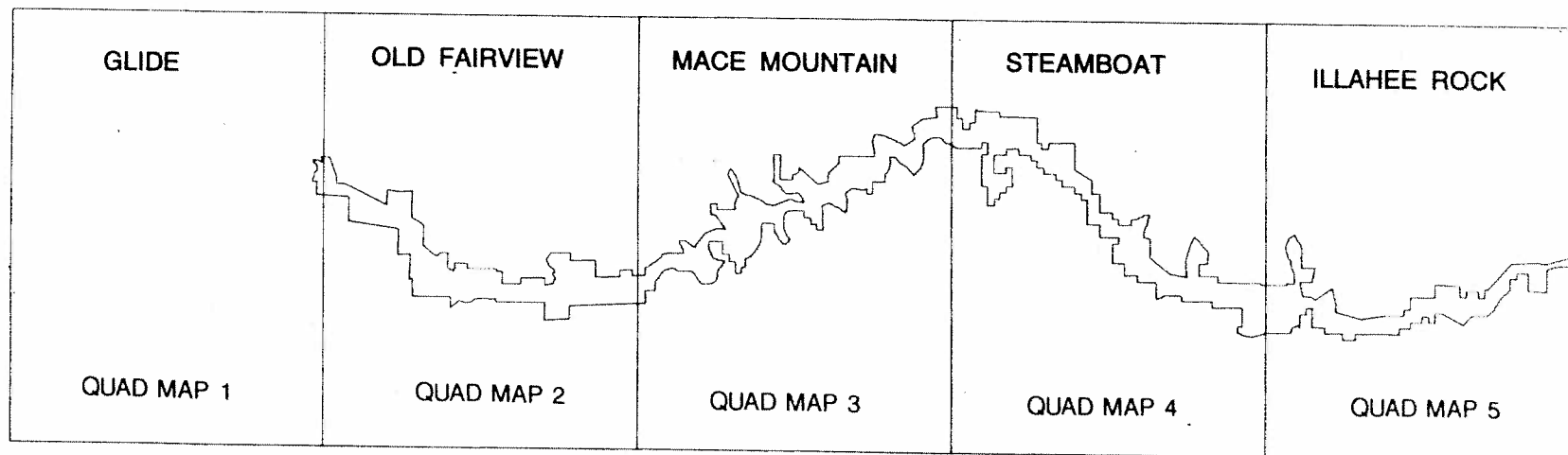
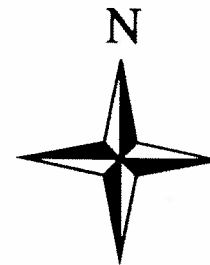


# North Umpqua Wild and Scenic River

## INDEX MAP

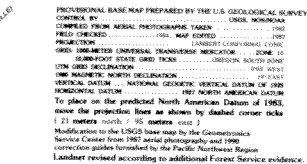


5 0 5 10 Miles



NORTH UMPQUA WILD &amp; SCENIC RIVER

GLIDE QUADRANGLE  
OREGON--DOUGLAS CO.  
7.5 MINUTE SERIES (TOPOGRAPHIC)



Legend: Forest Boundary


 Allocated Land Within the National Forest Boundary As of 1990

TOWNSHIP AND SECTION LINE CLASSIFICATION

Surveyed, Location Reliable

Surveyed, Location Approximate

..... Trading

TR: Rise/fall indicates change between positive and negative correlation with the factor.

Not valid for the following reasons: APPROXIMATE

Interstate Highway

U.S. Highway

State Highway

County Road

Primary Forest Road

7 Forest Type

10. *Journal of the American Statistical Association*, 1997, 92, 1023-1032.

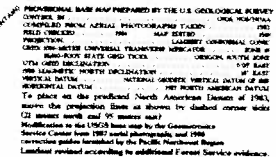
GLIDE, OREG.  
VISIONAL EDITION 1987  
N4315--W12300/7.5

GLIDE  
011AD 1 of 5



NORTH UMPQUA WILD & SCENIC RIVER

OLD FAIRVIEW QUADRANGLE  
OREGON-DOUGLAS CO.  
7.5 MINUTE SERIES (TOPOGRAPHIC)

[illegible]

CONTINUOUS INTERVAL: 40 FEET

ATTN: Read score indicate change between portions.

UTM GRID AND 1991  
MAGNETIC NORTH  
DECLINATION AT

<p> <input type="checkbox"/> National Forest Boundary  <input type="checkbox"/> Admitted Land Within the National Forest Boundary As of 1990 </p>	<p> <input type="checkbox"/> Township and Section Line Classification  <input type="checkbox"/> Surveyed, Location Reliable  <input type="checkbox"/> Surveyed, Location Approximate </p>
---	---

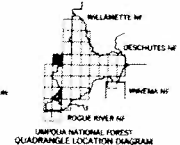
INTERVAL 00 FEET	
..... Primary 1h	
..... Secondary	
..... Improved I	
..... Improved II	
..... Improved III	

 Interstate Highway  
 U.S. Highway  
 State Highway  
 County Road  
 Primary Forest Road

AND A KENNIC  
RIVER BOUNDARY

OLD FAIRVIEW, OREGON  
PROVISIONAL EDITION 1985  
N4515 - W12262 5.7.5

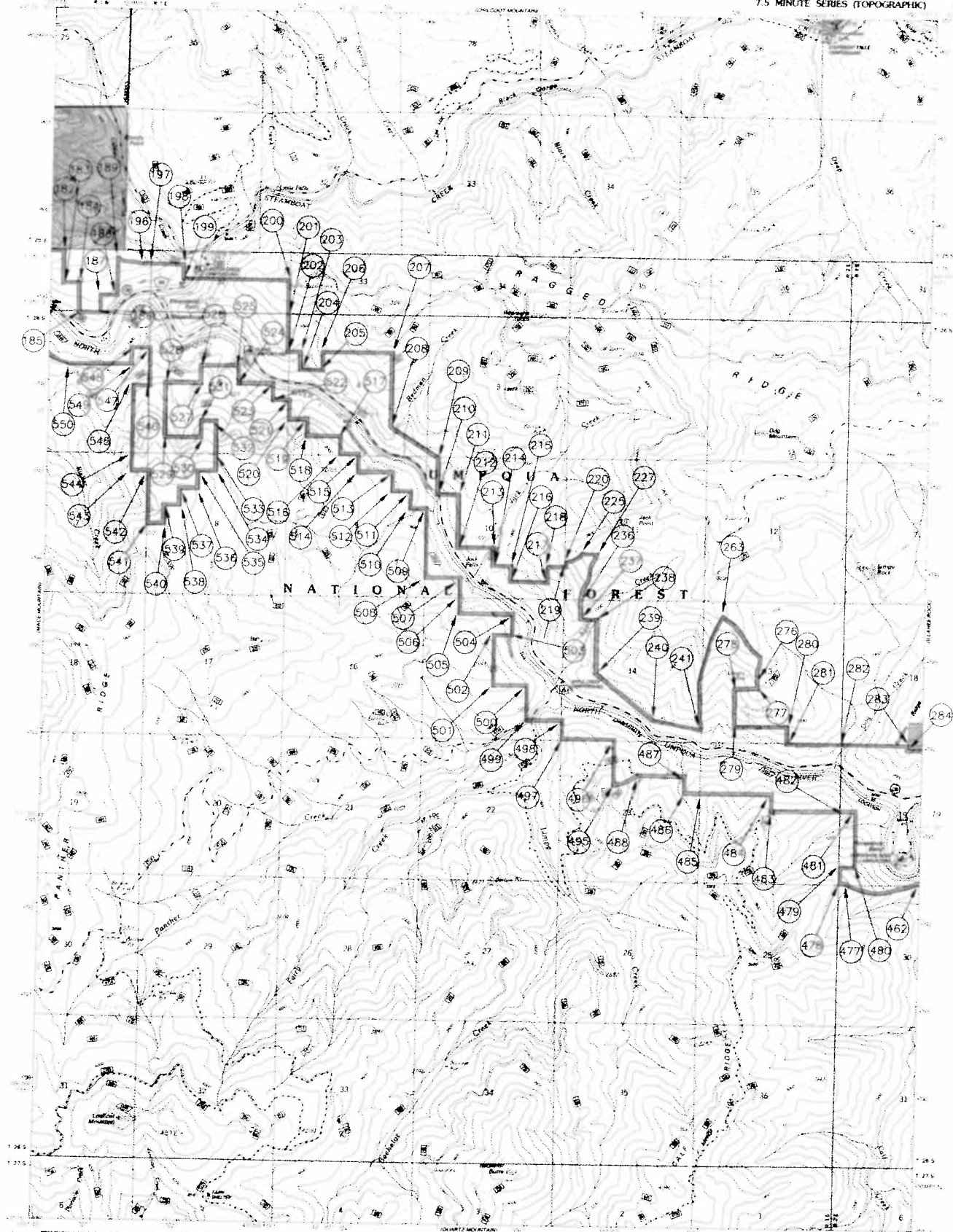
OLD FAIRVIEW  
QUAD 2 of 5





RTN UMPQUA WILD & SCENIC RIVER


STEAMBOAT QUADRANGLE  
OREGON-DOUGLAS CO.  
7.5 MINUTE SERIES (TOPOGRAPHIC)

[illegible]

SCALE 1 : 63,360

CONTOUR INTERVAL 40 FEET

 Historic Forest Boundary

 Altered Land Within the Historic Forest Boundary As of 1990

Surveyed, Location Relative

FOUR INTERVAL 40 FEET

Interstate highways	Primary highways
State highways	Secondary highways

Improved Road	Improved Road
Improved Road	Improved Road
Improved Road	Improved Road

any visible change between portions.  
portions not visible on the aerial photographs  
will be labeled APPROXIMATE LOCATION

WILD & SCENIC  
RIVER BOUNDARY

DESCRIPTION  
ANGLE POINT

STEAMBOAT, OREGON  
PROVISIONAL EDITION 1989

N4315 - W12237.5/7.5

STEAMBOAT

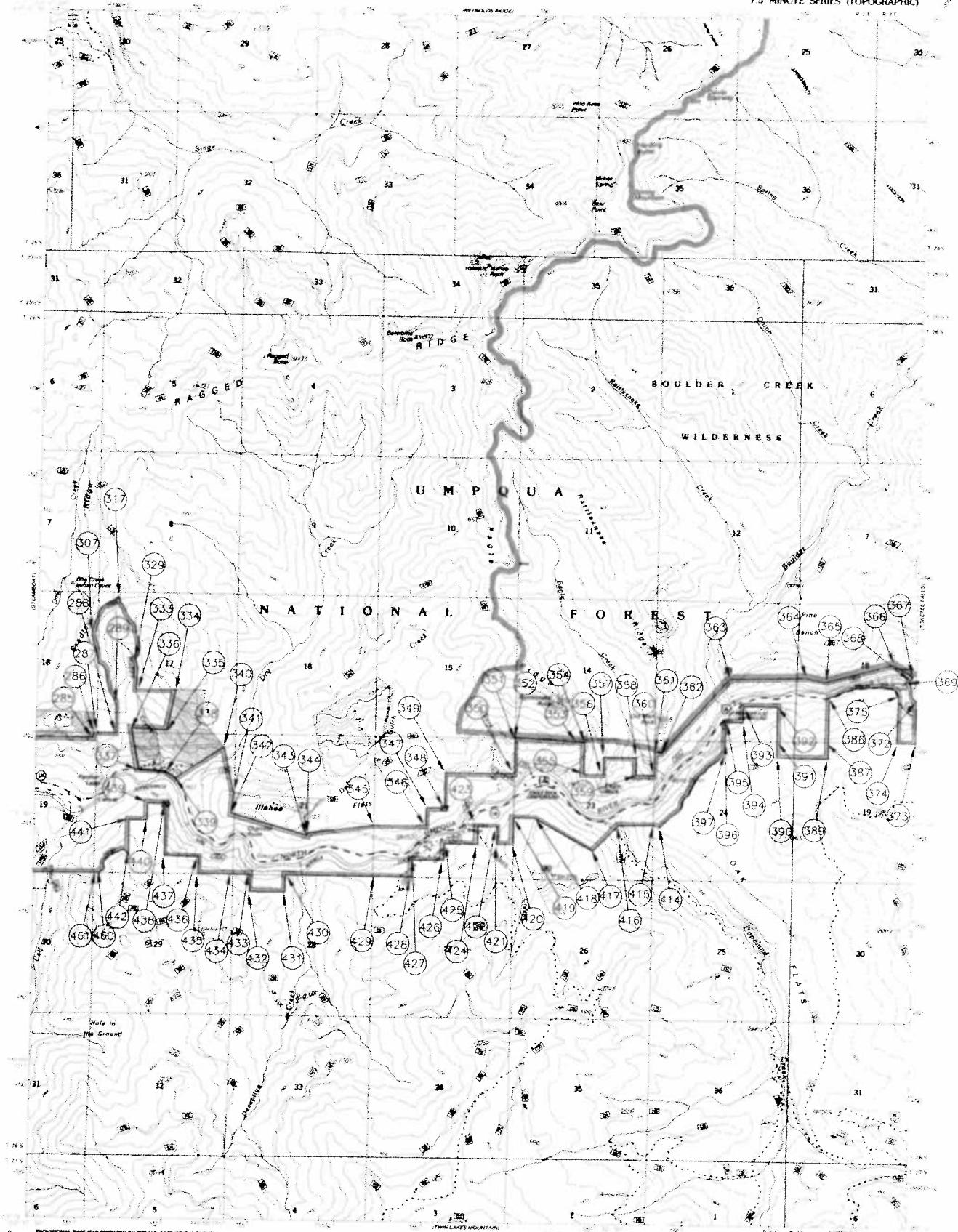


FEB., 1994

# RTH UMPOUA WILD & SCENIC RIVER

UNITED STATES  
DEPARTMENT OF THE INTERIOR  
GEOLOGICAL SURVEY  
MODIFIED FOR USDA FOREST SERVICE USE

ILLAHEE ROCK QUADRANGLE  
OREGON-DOUGLAS CO.  
7.5 MINUTE SERIES (TOPOGRAPHIC)



PROVISIONAL BASE MAP PREPARED BY THE U.S. GEOLOGICAL SURVEY  
CONTAINING:  
CORRECTED FROM AERIAL PHOTOGRAPHS TAKEN 1960-1961  
FIELD CHECKED 1960-1961  
PROJECTION: UTM ZONE 18  
UNIT: METERS  
SCALE: 1:63,360  
DATE: 1989  
TO: U.S. GEOLOGICAL SURVEY  
FROM: U.S. GEOLOGICAL SURVEY  
REMARKS: This map is a provisional base map for the Umpoua National Forest. It is based on the 1960-1961 aerial photographs and field checks. The map is not to be used for any other purpose without the approval of the U.S. Geological Survey. The map is a provisional base map for the Umpoua National Forest. It is based on the 1960-1961 aerial photographs and field checks. The map is not to be used for any other purpose without the approval of the U.S. Geological Survey.



TOPOGRAPHIC MAP  
1:63,360  
SCALE  
1:63,360  
DATE: 1989  
UNIT: METERS  
PROJECTION: UTM ZONE 18  
CONTAINING:  
CORRECTED FROM AERIAL PHOTOGRAPHS TAKEN 1960-1961  
FIELD CHECKED 1960-1961  
PROJECTION: UTM ZONE 18  
UNIT: METERS  
SCALE: 1:63,360  
DATE: 1989  
TO: U.S. GEOLOGICAL SURVEY  
FROM: U.S. GEOLOGICAL SURVEY  
REMARKS: This map is a provisional base map for the Umpoua National Forest. It is based on the 1960-1961 aerial photographs and field checks. The map is not to be used for any other purpose without the approval of the U.S. Geological Survey.

TOPOGRAPHIC MAP  
1:63,360  
SCALE  
1:63,360  
DATE: 1989  
UNIT: METERS  
PROJECTION: UTM ZONE 18  
CONTAINING:  
CORRECTED FROM AERIAL PHOTOGRAPHS TAKEN 1960-1961  
FIELD CHECKED 1960-1961  
PROJECTION: UTM ZONE 18  
UNIT: METERS  
SCALE: 1:63,360  
DATE: 1989  
TO: U.S. GEOLOGICAL SURVEY  
FROM: U.S. GEOLOGICAL SURVEY  
REMARKS: This map is a provisional base map for the Umpoua National Forest. It is based on the 1960-1961 aerial photographs and field checks. The map is not to be used for any other purpose without the approval of the U.S. Geological Survey.

TOPOGRAPHIC MAP  
1:63,360  
SCALE  
1:63,360  
DATE: 1989  
UNIT: METERS  
PROJECTION: UTM ZONE 18  
CONTAINING:  
CORRECTED FROM AERIAL PHOTOGRAPHS TAKEN 1960-1961  
FIELD CHECKED 1960-1961  
PROJECTION: UTM ZONE 18  
UNIT: METERS  
SCALE: 1:63,360  
DATE: 1989  
TO: U.S. GEOLOGICAL SURVEY  
FROM: U.S. GEOLOGICAL SURVEY  
REMARKS: This map is a provisional base map for the Umpoua National Forest. It is based on the 1960-1961 aerial photographs and field checks. The map is not to be used for any other purpose without the approval of the U.S. Geological Survey.

TOPOGRAPHIC MAP  
1:63,360  
SCALE  
1:63,360  
DATE: 1989  
UNIT: METERS  
PROJECTION: UTM ZONE 18  
CONTAINING:  
CORRECTED FROM AERIAL PHOTOGRAPHS TAKEN 1960-1961  
FIELD CHECKED 1960-1961  
PROJECTION: UTM ZONE 18  
UNIT: METERS  
SCALE: 1:63,360  
DATE: 1989  
TO: U.S. GEOLOGICAL SURVEY  
FROM: U.S. GEOLOGICAL SURVEY  
REMARKS: This map is a provisional base map for the Umpoua National Forest. It is based on the 1960-1961 aerial photographs and field checks. The map is not to be used for any other purpose without the approval of the U.S. Geological Survey.

TOPOGRAPHIC MAP  
1:63,360  
SCALE  
1:63,360  
DATE: 1989  
UNIT: METERS  
PROJECTION: UTM ZONE 18  
CONTAINING:  
CORRECTED FROM AERIAL PHOTOGRAPHS TAKEN 1960-1961  
FIELD CHECKED 1960-1961  
PROJECTION: UTM ZONE 18  
UNIT: METERS  
SCALE: 1:63,360  
DATE: 1989  
TO: U.S. GEOLOGICAL SURVEY  
FROM: U.S. GEOLOGICAL SURVEY  
REMARKS: This map is a provisional base map for the Umpoua National Forest. It is based on the 1960-1961 aerial photographs and field checks. The map is not to be used for any other purpose without the approval of the U.S. Geological Survey.

ILLAHEE ROCK, OREGON  
PROVISIONAL EDITION 1989  
NAD83 WILDMETTS

ILLAHEE ROCK