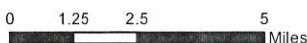
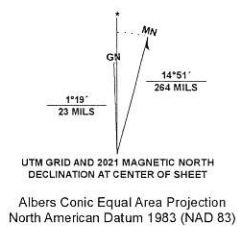
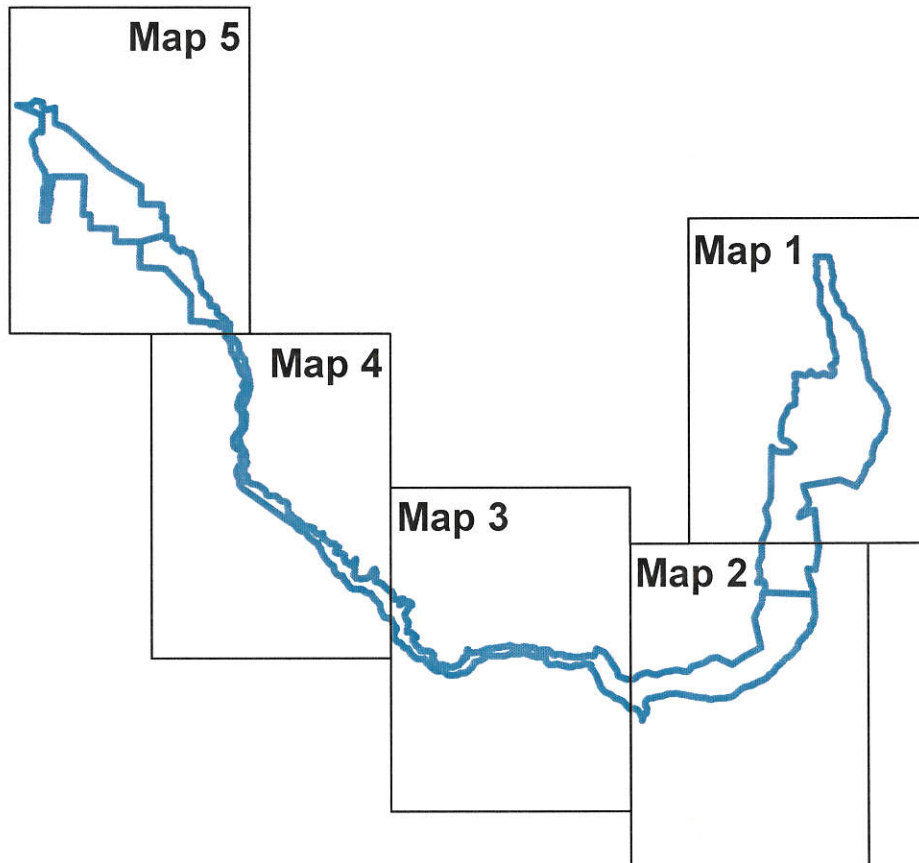



# Index



 Salmon Wild & Scenic River

## Salem District

Oregon State Office  
Bureau of Land Management  
U. S. Department of Interior

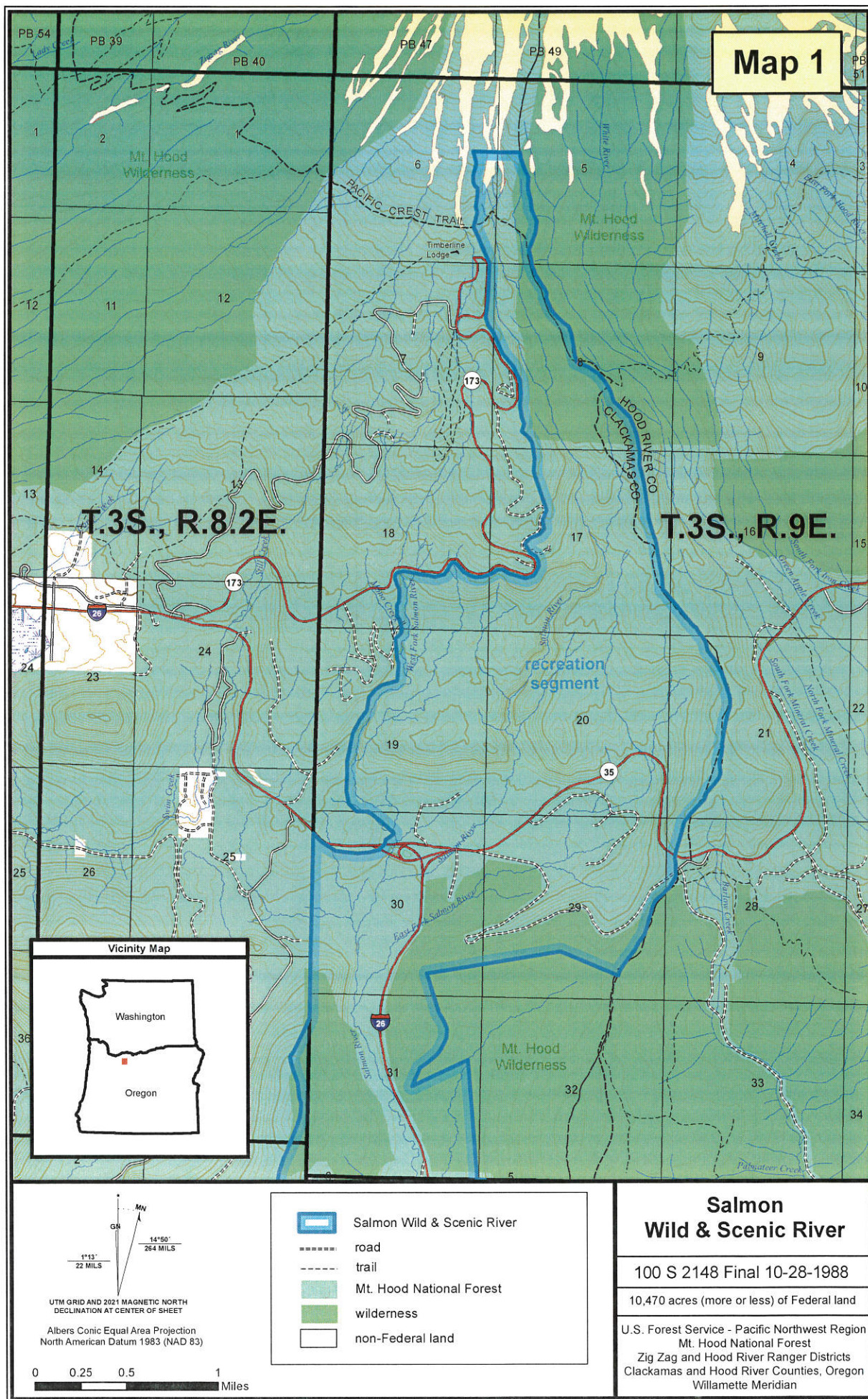
## Salmon Wild & Scenic River

100 S 2148 Final 10-28-1988

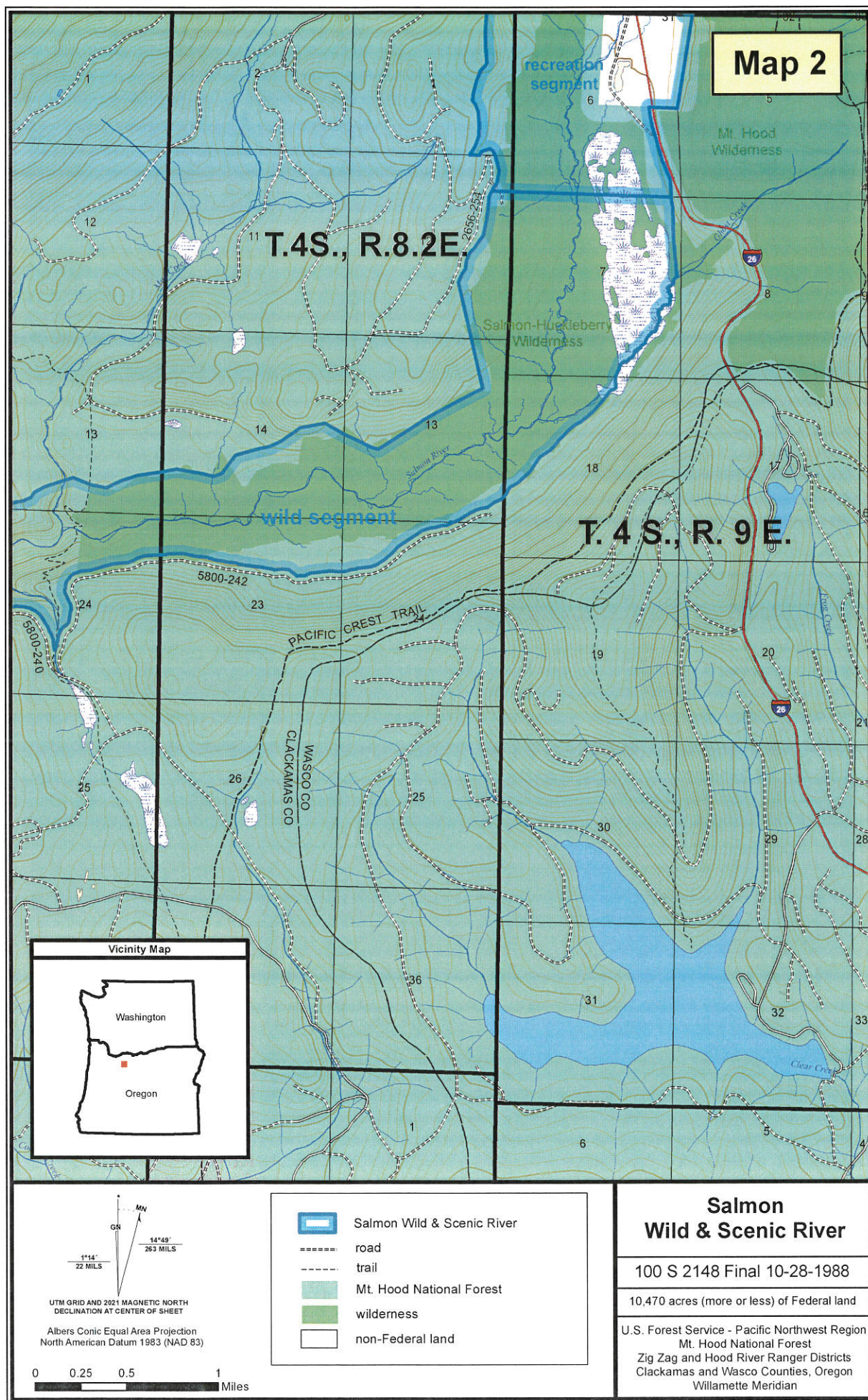
10,470 acres (more or less) of Federal land

U.S. Forest Service - Pacific Northwest Region  
Mt. Hood National Forest  
Clackamas River Ranger District  
Clackamas, Hood River, and Wasco Counties  
Willamette Meridian











# Map 3

T. 3 S., R. 8 E.

T. 4 S., R. 8 E.

Salmon-Huckleberry  
Wilderness

Wild segment

## Vicinity Map



GN  
MN  
1°18' 23 MILS  
14°50' 264 MILS  
UTM GRID AND 2021 MAGNETIC NORTH  
DECLINATION AT CENTER OF SHEET  
Albers Conic Equal Area Projection  
North American Datum 1983 (NAD 83)

0 0.25 0.5 1 Miles

- Salmon Wild & Scenic River
- road
- trail
- Mt. Hood National Forest
- wilderness
- non-Federal land

## Salmon Wild & Scenic River

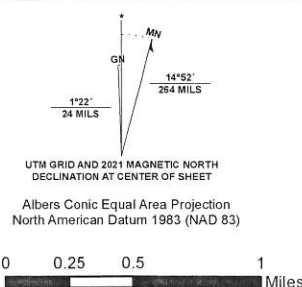
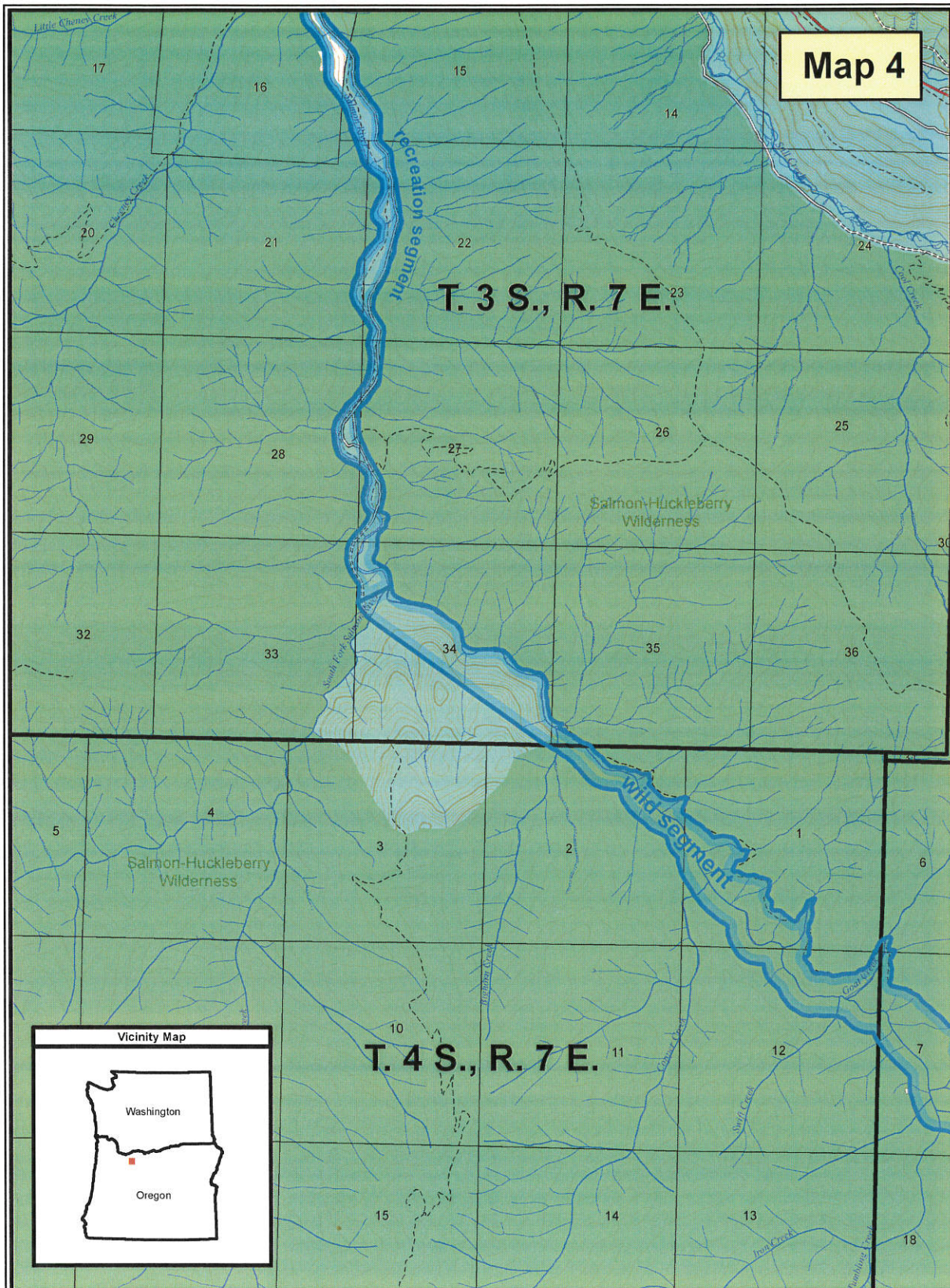
100 S 2148 Final 10-28-1988

10,470 acres (more or less) of Federal land

U.S. Forest Service - Pacific Northwest Region  
Mt. Hood National Forest  
Zig Zag and Hood River Ranger Districts  
Clackamas County, Oregon  
Willamette Meridian



# Map 4



- Salmon Wild & Scenic River
- road
- trail
- Mt. Hood National Forest
- wilderness
- non-Federal land

**Salmon Wild & Scenic River**

100 S 2148 Final 10-28-1988

10,470 acres (more or less) of Federal land

U.S. Forest Service - Pacific Northwest Region  
 Mt. Hood National Forest  
 Zig Zag and Hood River Ranger Districts  
 Clackamas County, Oregon  
 Willamette Meridian



