

CLEARWATER WILDERNESS



ENUMCLAW SW  
INDEX MAP NUMBER 1

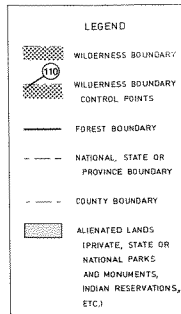
ENUMCLAW SE  
INDEX MAP NUMBER 2

GREENWATER SW  
INDEX MAP NUMBER 3

MOWICH LAKE  
INDEX MAP NUMBER 5

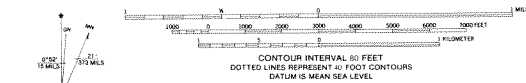
SUNRISE  
INDEX MAP NUMBER 4

ENUMCLAW S.W. QUADRANGLE  
WASHINGTON - PIERCE COUNTY  
7.5 MINUTE SERIES



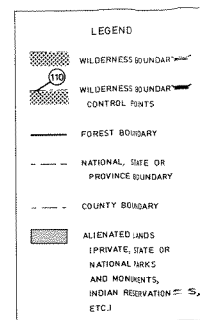
ENUMCLAW SW

INDEX MAP NUMBER 1



$\omega(\mathcal{M} \vdash \mathcal{A}) \leq \omega(\mathcal{M} \vdash \mathcal{B})$  and  $\omega(\mathcal{M} \vdash \mathcal{B}) \leq \omega(\mathcal{M} \vdash \mathcal{C})$ , then  
 $\omega(\mathcal{M} \vdash \mathcal{A}) \leq \omega(\mathcal{M} \vdash \mathcal{C})$ .

ENUMCLAW S.E. QUADRANGLE  
WASHINGTON - PIERCE COUNTY  
7.5 MINUTE SERIES



SCALE 1:63,360  
SEPTEMBER 1961

INDEX MAP NUMBER 2

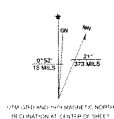
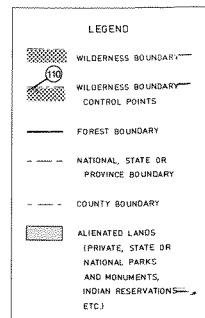
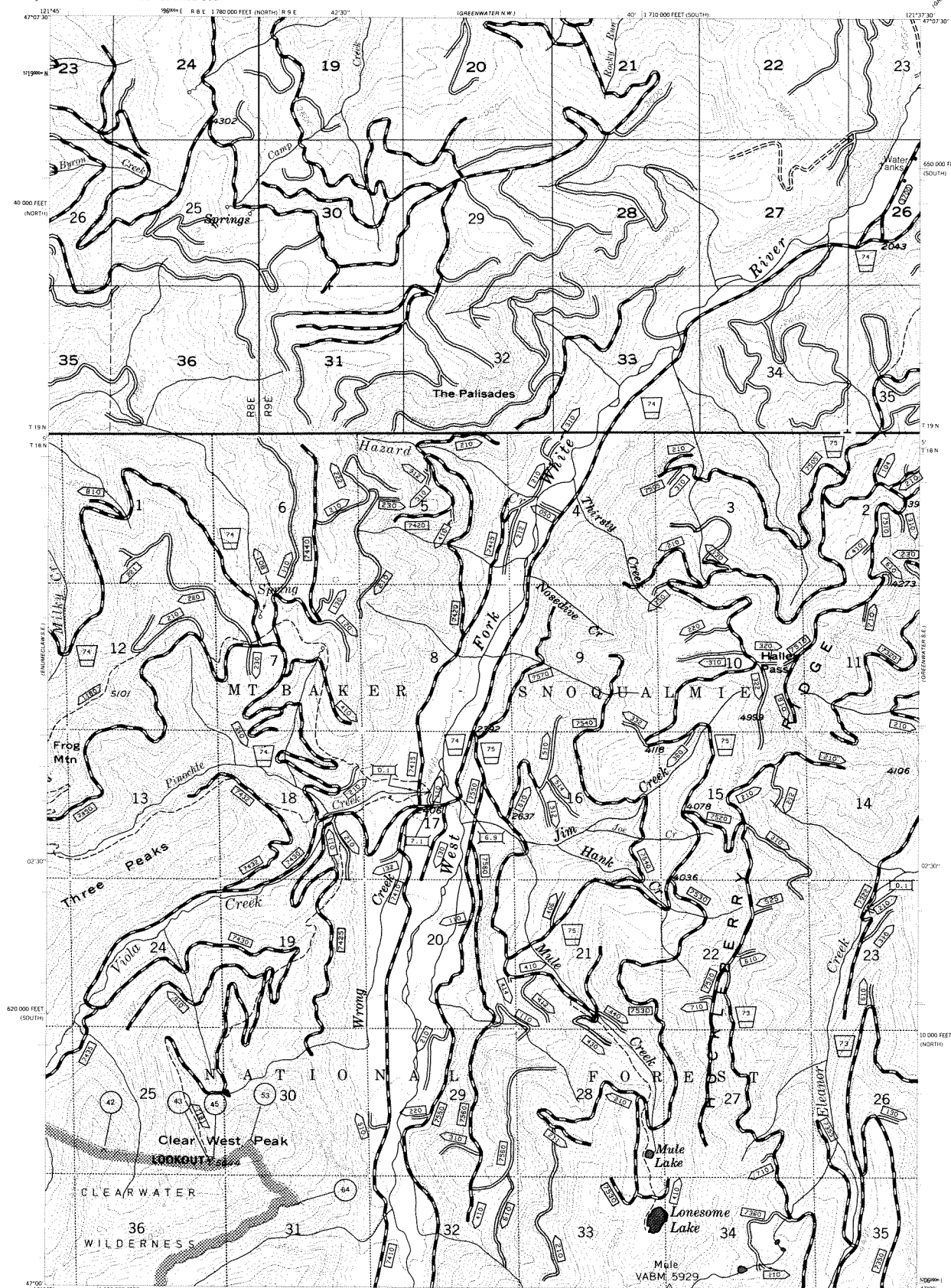
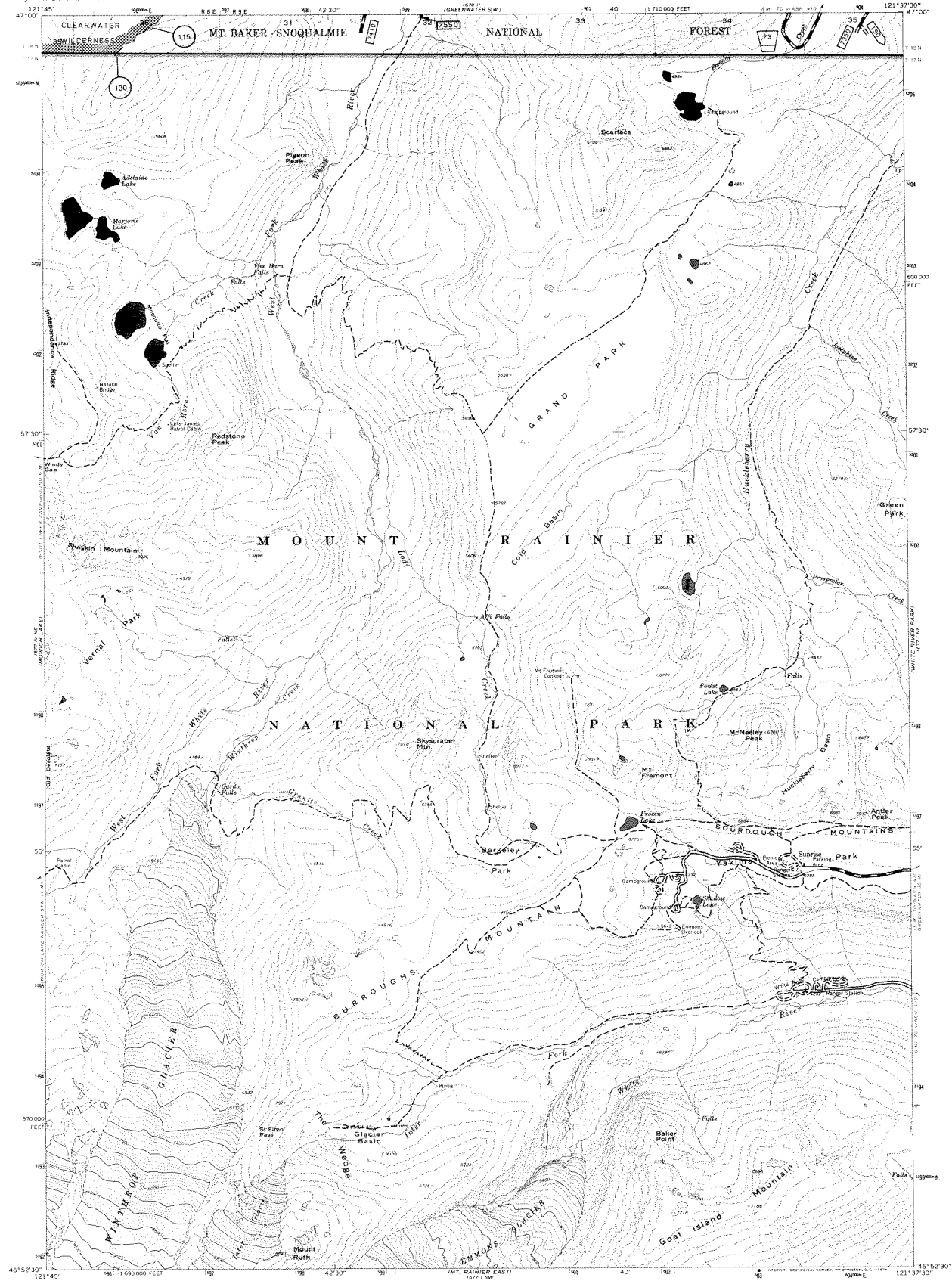


Figure 1 is a cross-section diagram of a coastal profile. The horizontal axis represents distance in feet (0 to 7000) and kilometers (0 to 1). The vertical axis represents elevation. The profile shows a beach, dune, and coastal plain. Dotted lines indicate 40-foot contours. The datum is mean sea level.

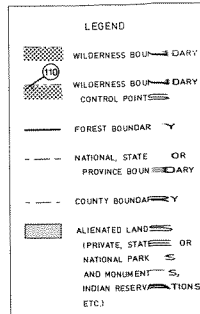
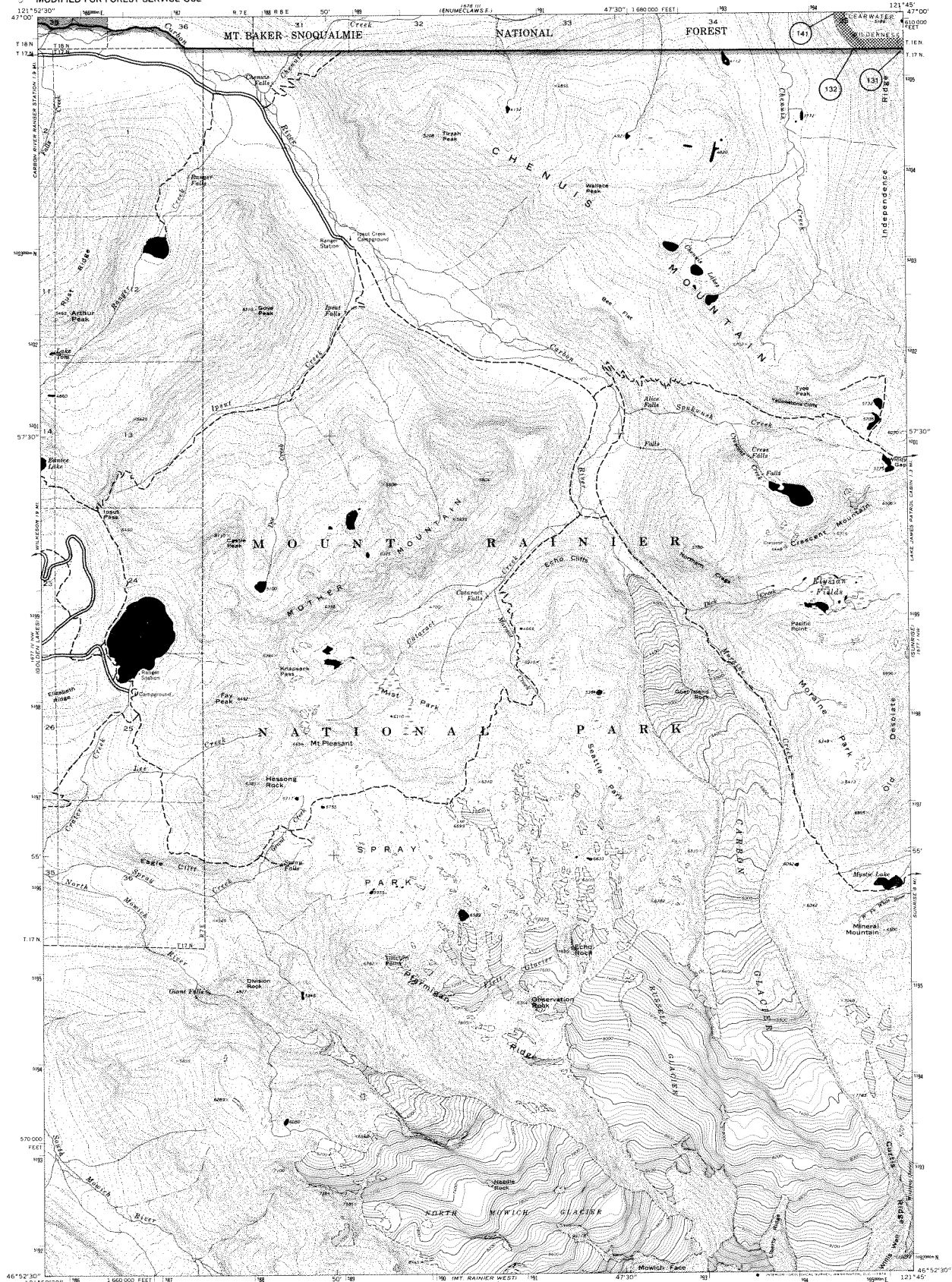






UNITED STATES  
DEPARTMENT OF THE INTERIOR  
GEOLOGICAL SURVEY  
MODIFIED FOR FOREST SERVICE USE

MOWICH LAKE QUADRANGLE  
WASHINGTON - PIERCE COUNTY  
7.5 MINUTE SERIES



SCALE 1:63,360  
SEPTEMBER 1986

MOWICH LAKE  
INDEX MAP NUMBER 5

