

QUAD. SHEET REFERENCE MAP
WENAH TUCANNON WILDERNESS
UMATILLA NATIONAL FOREST

T. 35 N

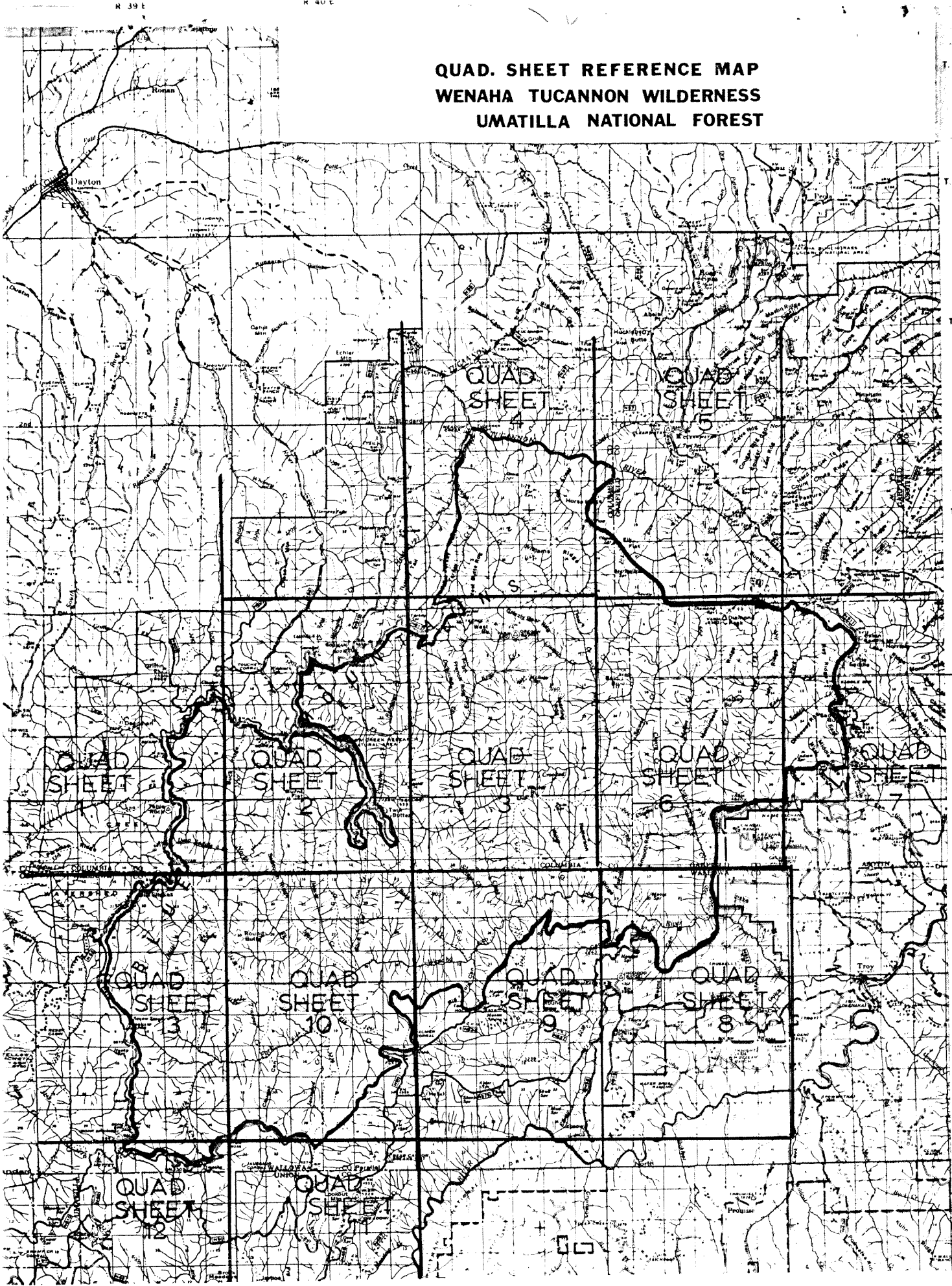
T. 34 N

T. 29 N

T. 28 N

T. 27 N

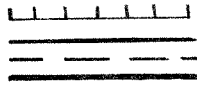
T. 26 N



WENAH-TUCANNON WILDERNESS BOUNDARY

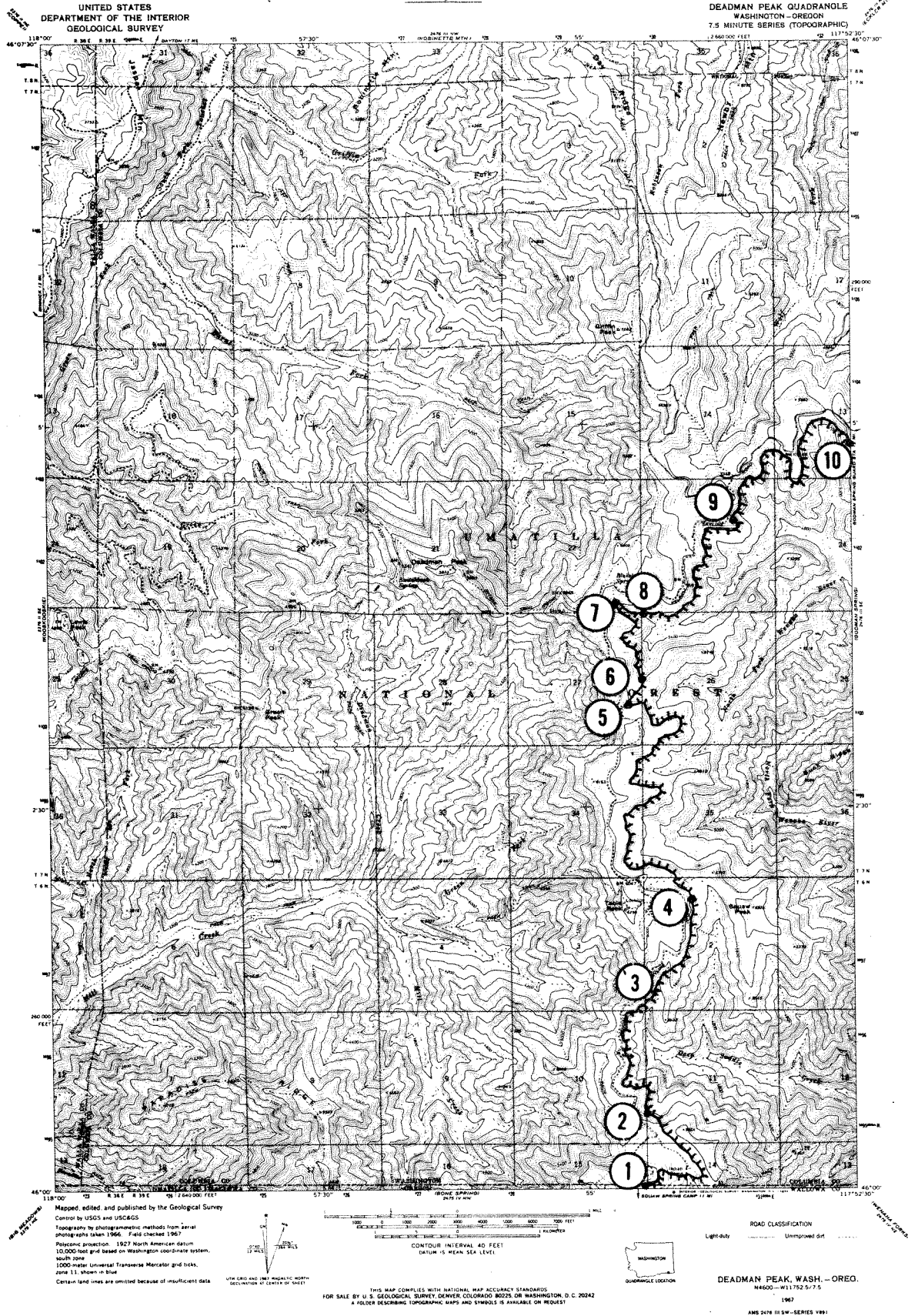
The exterior boundary of the Wenaha-Tucannon Wilderness, Umatilla National Forest, Pacific Northwest Region, May 1978 as covered in the National Wilderness Preservation System by the Endangered American Wilderness Act of 1978.

LEGEND



Wilderness Boundary
Forest Boundary
County Line
Other Ownership
Angle Points

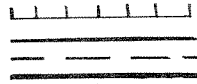
Quad Sheet Number 1



WENAH-TUCANNON WILDERNESS BOUNDARY

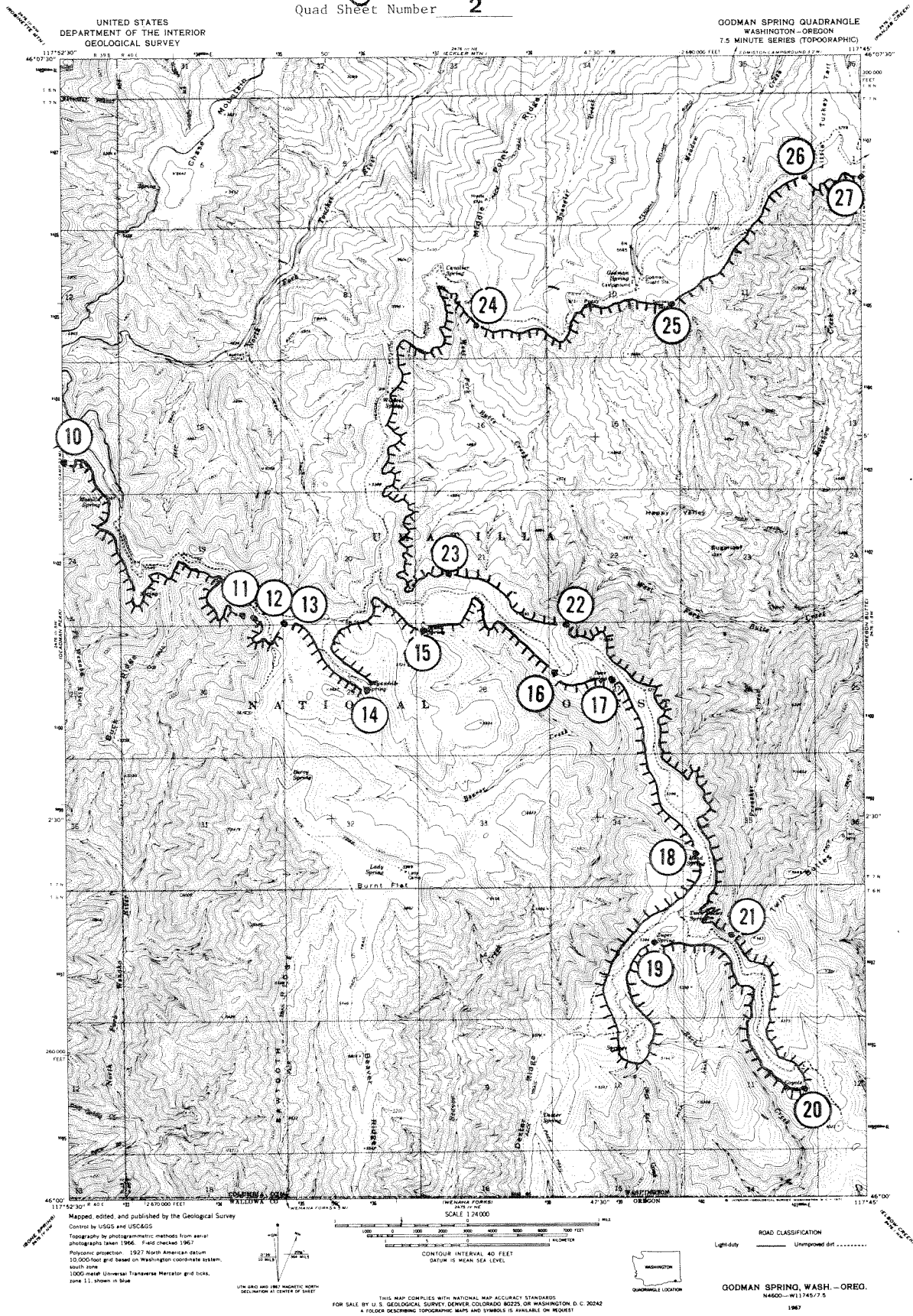
The exterior boundary of the Wenaha-Tucannon Wilderness, Umatilla National Forest, Pacific Northwest Region, May 1978 as covered in the National Wilderness Preservation System by the Endangered American Wilderness Act of 1978.

LEGEND



Quad Sheet Number **2**

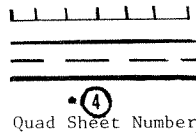
Wilderness Boundary
Forest Boundary
County Line
Other Ownership
Angle Points



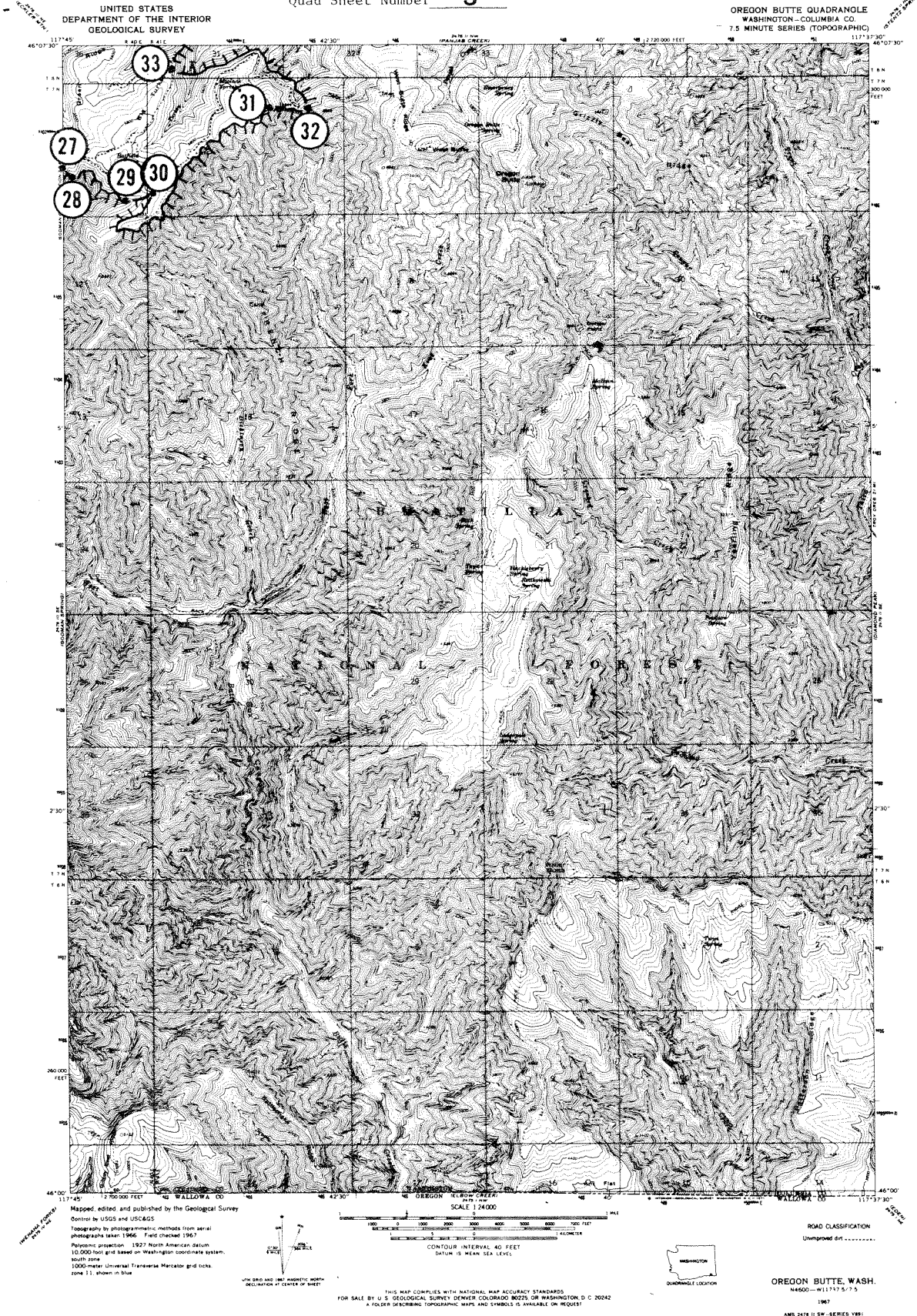
WENAH-TUCANNON WILDERNESS BOUNDARY

The exterior boundary of the Wenaha-Tucannon Wilderness, Umatilla National Forest, Pacific Northwest Region, May 1978 as covered in the National Wilderness Preservation System by the Endangered American Wilderness Act of 1978.

LEGEND



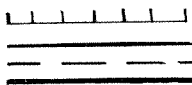
Wilderness Boundary
Forest Boundary
County Line
Other Ownership
Angle Points



WENAH-TUCANNON WILDERNESS BOUNDARY

The exterior boundary of the Wenaha-Tucannon Wilderness, Umatilla National Forest, Pacific Northwest Region, May 1978 as covered in the National Wilderness Preservation System by the Endangered American Wilderness Act of 1978.

LEGEND

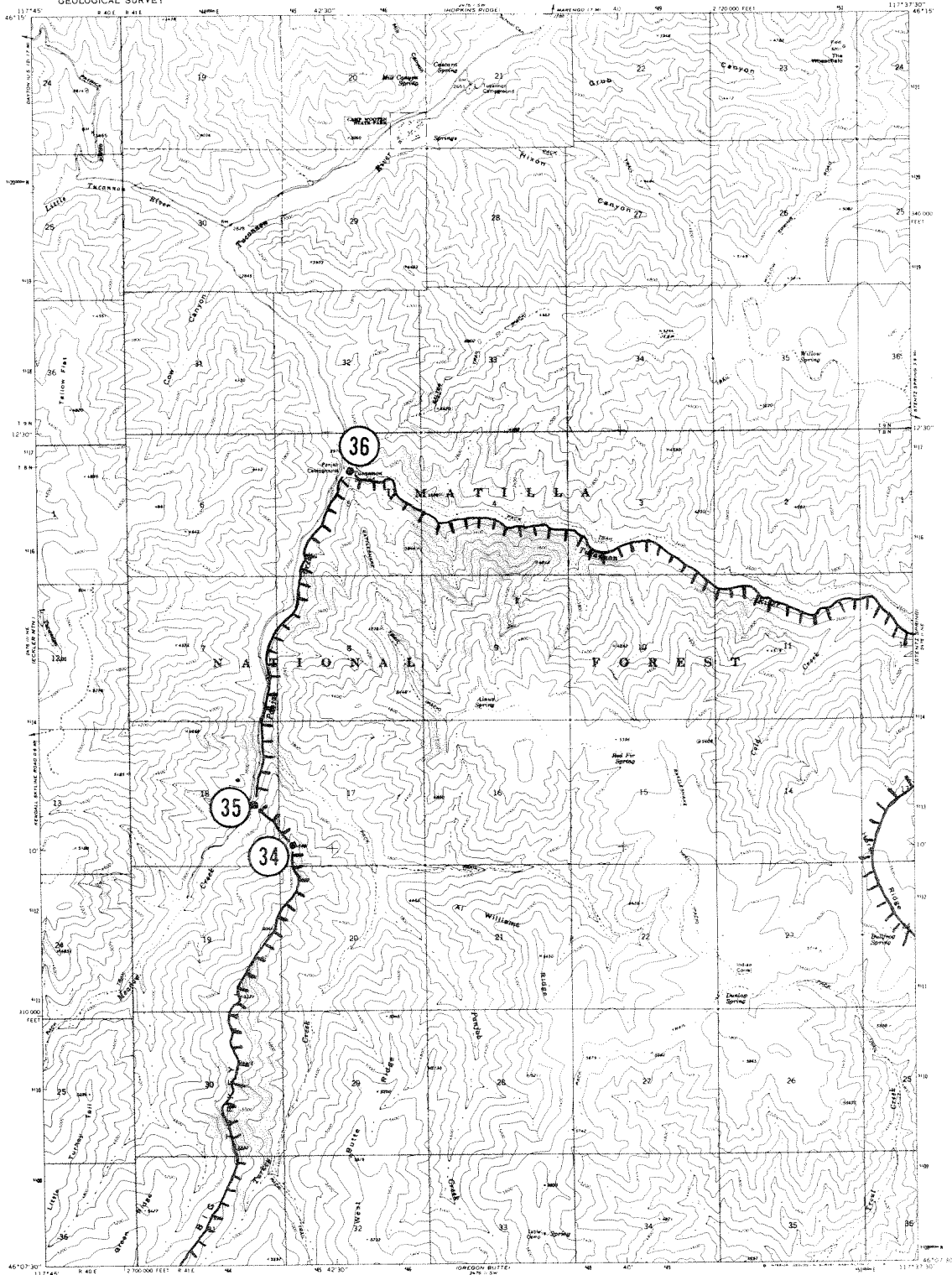


Quad Sheet Number **4**

Wilderness Boundary
Forest Boundary
County Line
Other Ownership
Angle Points

UNITED STATES
DEPARTMENT OF THE INTERIOR
GEOLOGICAL SURVEY

PANJAB CREEK QUADRANGLE
WASHINGTON-COLUMBIA CO.
7.5 MINUTE SERIES (TOPOGRAPHIC)



Maped, edited and published by the Geological Survey
Control by USGS and USC&GS
Topography by photogrammetric methods from aerial
photographs taken 1955. First checked 1967.
Projection: 1927 North American datum
10,000 foot grid based on Washington coordinate system
North zone
1000 meter Universal Transverse Mercator grid ticks
zone 11 shown in blue

SCALE 1:24,000
CONTOUR INTERVAL 40 FEET
(DATUM IS MEAN SEA LEVEL)
ROAD CLASSIFICATION
Light duty
Unimproved dirt
FOR SALE BY U.S. GEOLOGICAL SURVEY, DENVER, COLORADO 80225 OR WASHINGTON, D.C. 20542
A FOLDER DESCRIBING TOPOGRAPHIC MAPS AND SYMBOLS IS AVAILABLE ON REQUEST

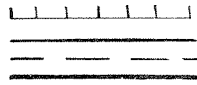
PANJAB CREEK, WASH

FREE COPY

WENAHU-TUCANNON WILDERNESS BOUNDARY

The exterior boundary of the Wenaha-Tucannon Wilderness, Umatilla National Forest, Pacific Northwest Region, May 1978 as covered in the National Wilderness Preservation System by the Endangered American Wilderness Act of 1978.

LEGEND

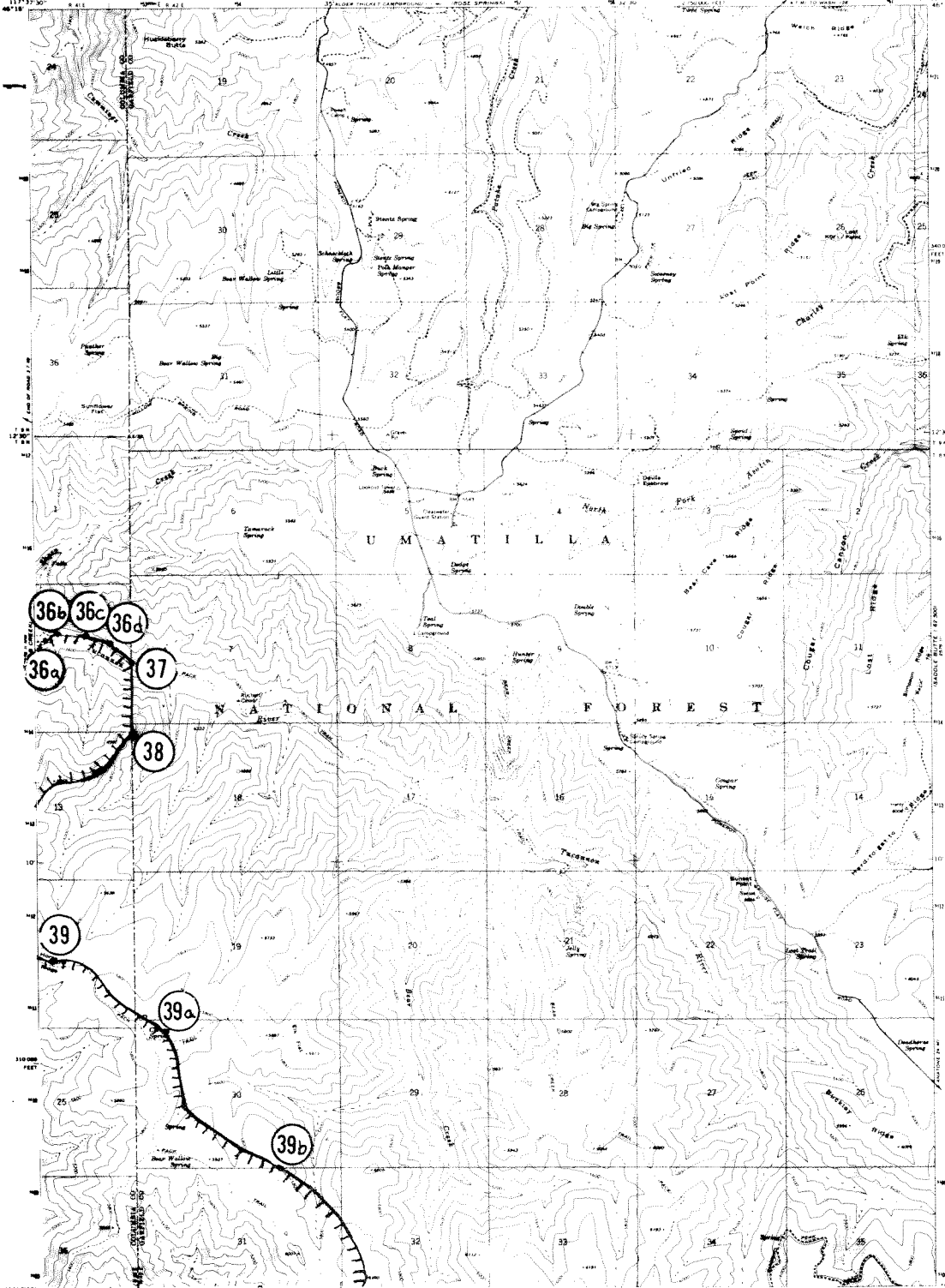


Wilderness Boundary
Forest Boundary
County Line
Other Ownership
Angle Points

Quad Sheet Number **5**

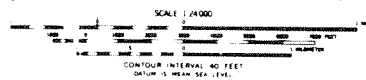
UNITED STATES
DEPARTMENT OF THE INTERIOR
GEOLOGICAL SURVEY

STENTZ SPRING QUADRANGLE
WASHINGTON
7.5 MINUTE SERIES (TOPOGRAPHIC)



Revised, edited, and published by the Geological Survey
Control by USGS and USFWS
Topographic by photogrammetry, modified from aerial
photographs taken 1966. First issued 1967.
Datum projection: 1927 North American datum.
Scale: 1:50,000 based on Washington coordinate system.
Elevation: 1000-foot Universal Transverse Mercator grid ticks
and 50-foot contour lines.

THIS MAP COMPLETES WITH NATIONAL MAP ACCURACY STANDARDS
FOR SALE BY U.S. GEOLOGICAL SURVEY, DENVER, COLORADO 80225 OR WASHINGTON, D.C. 20542
A 10-MINUTE TOPOGRAPHIC MAP AND SYMBOLS IS AVAILABLE ON REQUEST

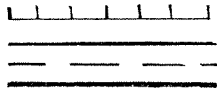


ROAD CLASSIFICATION
Light-duty
Unimproved dirt

STENTZ SPRING, WASH
H48075-W11730-7.5
1967

AND 3476 II NE-SERIES 100

LEGEND



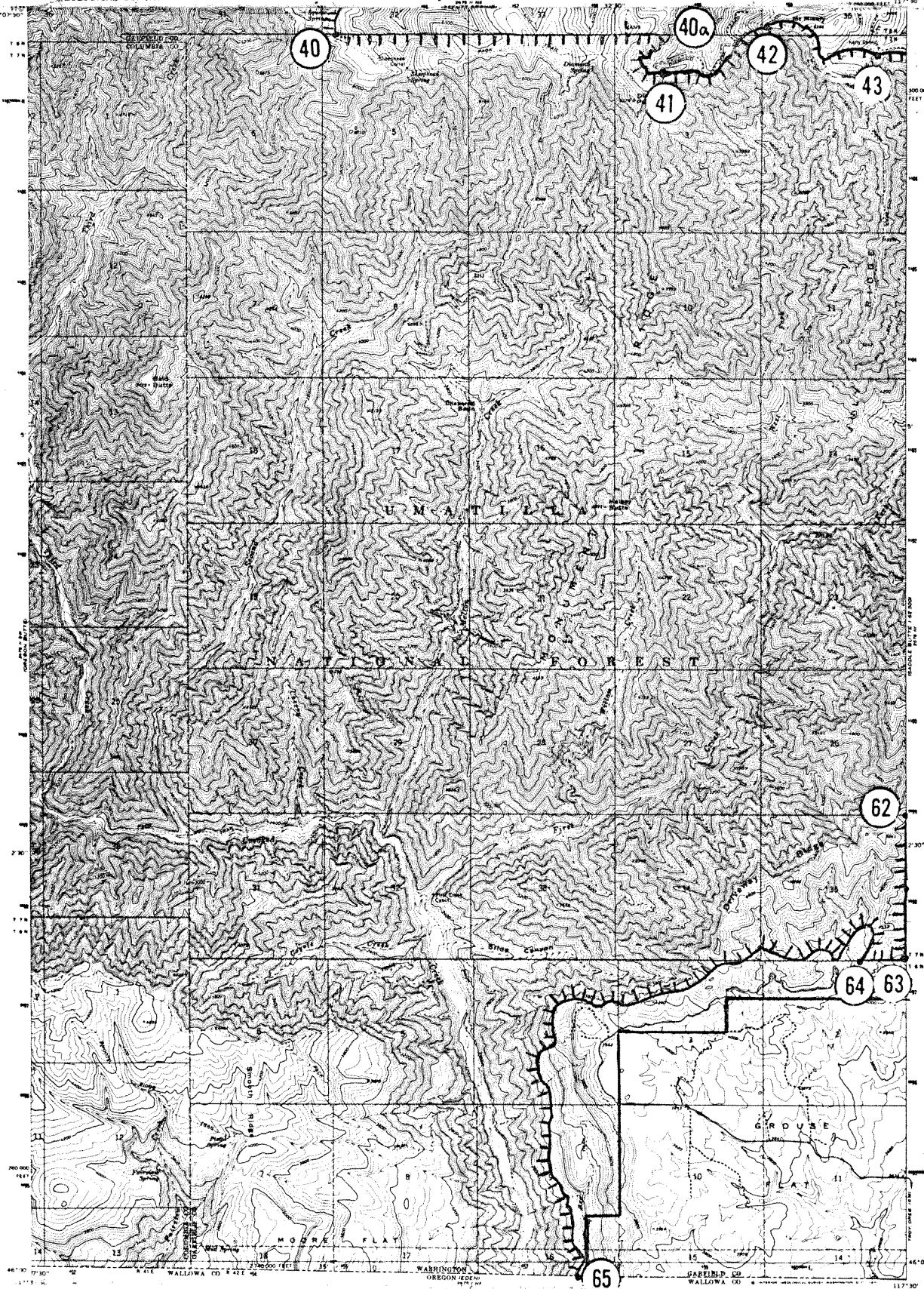
Wilderness Boundary
Forest Boundary
County Line
Other Ownership
Angle Points

Corrected July 1981

Quad Sheet Number **6**

UNITED STATES
DEPARTMENT OF THE INTERIOR
GEOLOGICAL SURVEY

DIAMOND PEAK QUADRANGLE
WASHINGTON
7.5 MINUTE SERIES (TOPOGRAPHIC)



WENAHAN-TUCANNON WILDERNESS BOUNDARY
The exterior boundary of the Wenaha-Tucannon Wilderness, Umatilla National Forest, Pacific Northwest Region, May 1978 as covered in the National Wilderness Preservation System by the Endangered American Wilderness Act of 1978.

Map produced and published by the Geological Survey

Control by USGS and USFS/AGS

Topography by photogrammetric methods from aerial

photographs taken 1966. Photo (check) 1967

Photocopy produced 1977 North American datum

10 DCP foot grid based on Washington coast-nate system

scale: none

SCALE: 1:62,500

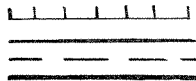
ROAD CLASSIFICATION

Light duty Improved dirt

WENAH-TUCANNON WILDERNESS BOUNDARY

The exterior boundary of the Wenaha-Tucannon Wilderness, Umatilla National Forest, Pacific Northwest Region, May 1978 as covered in the National Wilderness Preservation System by the Endangered American Wilderness Act of 1978.

LEGEND

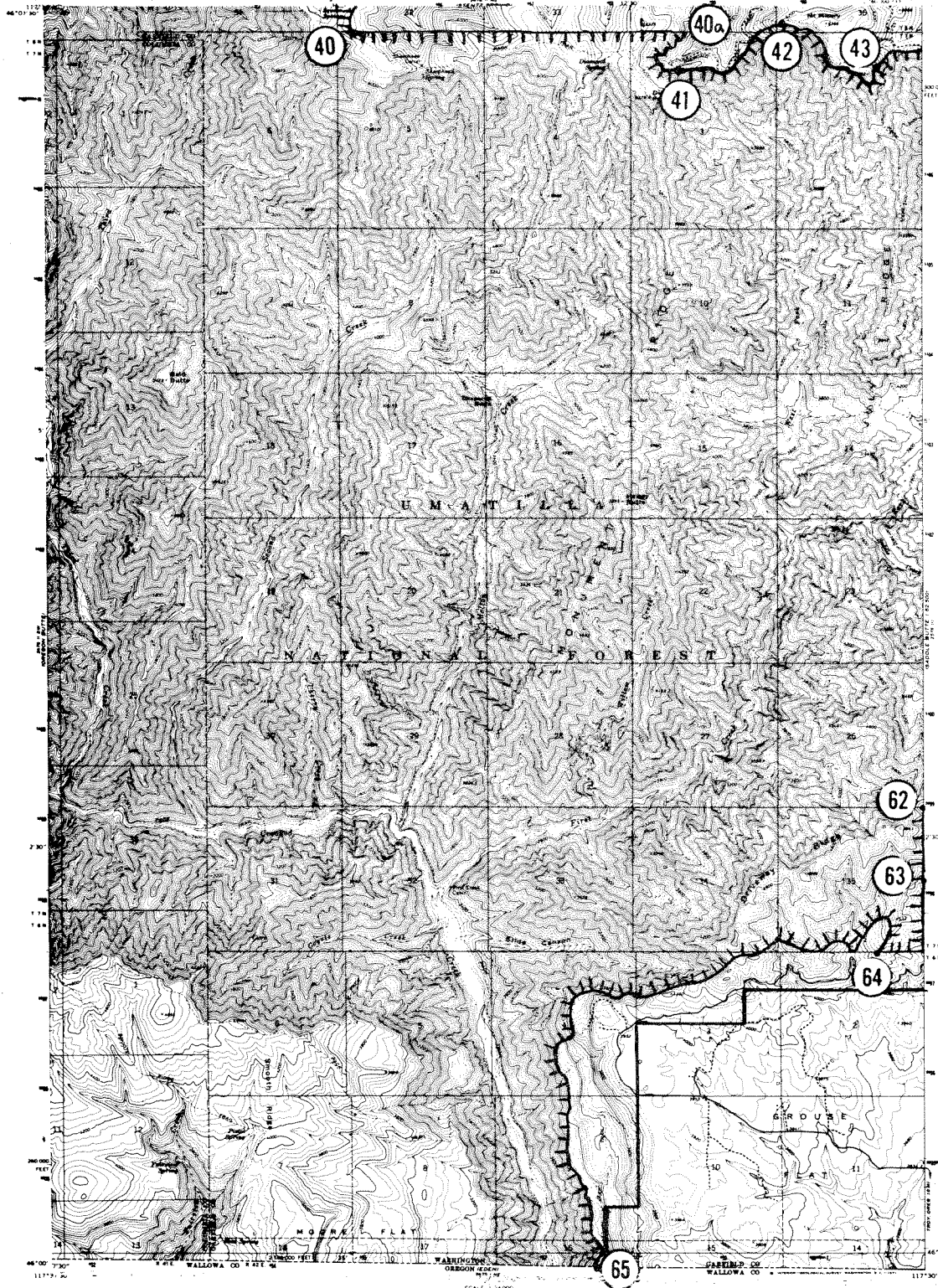


Quad Sheet Number 6

Wilderness Boundary
Forest Boundary
County Line
Other Ownership
Angle Points

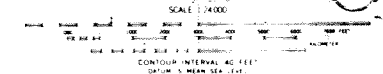
UNITED STATES
DEPARTMENT OF THE INTERIOR
GEOLOGICAL SURVEY

DIAMOND PEAK QUADRANGLE
WASHINGTON
7.5 MINUTE SERIES (TOPOGRAPHIC)



Revised, edited and published by the Geological Survey
Control to USGS and USFWS
Topography by photogrammetric methods from aerial
photographs taken 1966. Field checked 1967
Photometric projection (1927 North American datum)
10,000-foot grid based on Washington coordinate system
South zone
1:250,000-scale Universal Transverse Mercator grid ticks
and 1:1 million in blue

THIS MAP COMPLETES WITH NATIONAL MAP IN U.S. GEOLOGICAL SURVEY
FOR SALE BY U.S. GEOLOGICAL SURVEY, DENVER, COLORADO 80225 OR WASHINGTON, D.C. 20242
A FOLDER DESCRIBING TOPOGRAPHIC MAPS AND SYMBOLS IS AVAILABLE ON REQUEST



ROAD CLASSIFICATION
Light duty — Unimproved dirt

DIAMOND PEAK, WASH.
NAD80 W1130 7.5

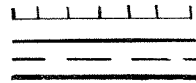
1967

AMS 3470 II SS SERIES 7501

WENAH-TUCANNON WILDERNESS BOUNDARY

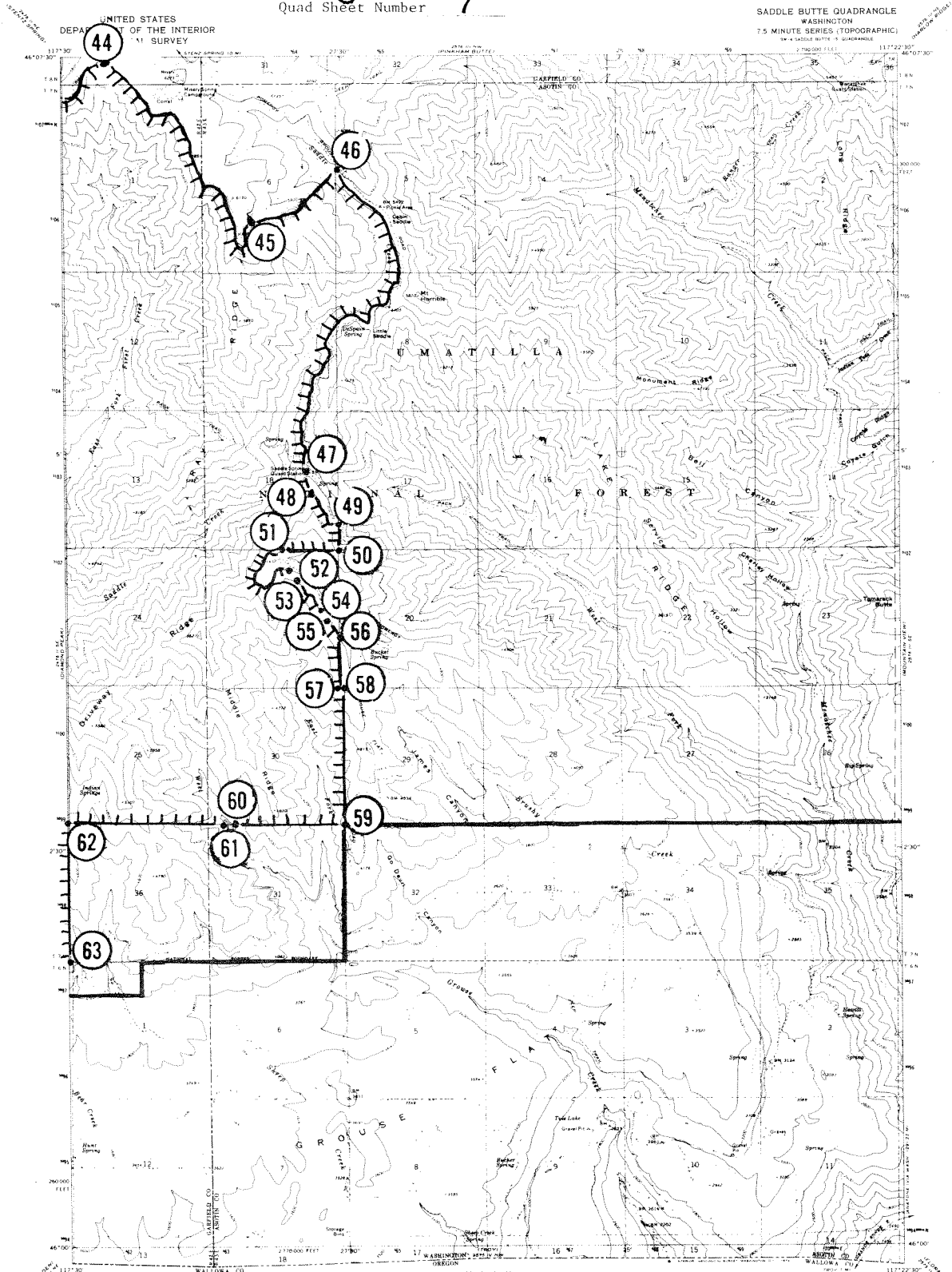
The exterior boundary of the Wenaha-Tucannon Wilderness, Umatilla National Forest, Pacific Northwest Region, May 1978 as covered in the National Wilderness Preservation System by the Endangered American Wilderness Act of 1978.

LEGEND



Quad Sheet Number 7

Wilderness Boundary
Forest Boundary
County Line
Other Ownership
Angle Points



Maped, edited, and published by the Geological Survey
Control by USGS and USFS
Topographic by photogrammetric methods from aerial
photographs taken 1970. Field checked 1971.
Projection and 10,000 foot grid ticks, Washington coordinate
system, south zone (Lambert conformal conic).
1:000 meter (Universal Transverse Mercator) grid ticks,
zone 11, NAD 83 datum. 1927 North American datum.
Fine red dashed lines indicate selected fence lines.

SCALE 1:24,000
CONTINUOUS INTERVAL 40 FEET
UNITED STATES GEOLOGICAL SURVEY
WASHINGTON, D.C. 20508

ROAD CLASSIFICATION
Primary highway
Secondary highway
Unimproved road
Interstate Route
State Route

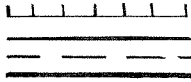
SADDLE BUTTE, WASH.
1:000,000 scale
1971

FILE COPY

WENAHA-TUCANNON WILDERNESS BOUNDARY

The exterior boundary of the Wenaha-Tucannon Wilderness, Umatilla National Forest, Pacific Northwest Region, May 1978 as covered in the National Wilderness Preservation System by the Endangered American Wilderness Act of 1978.

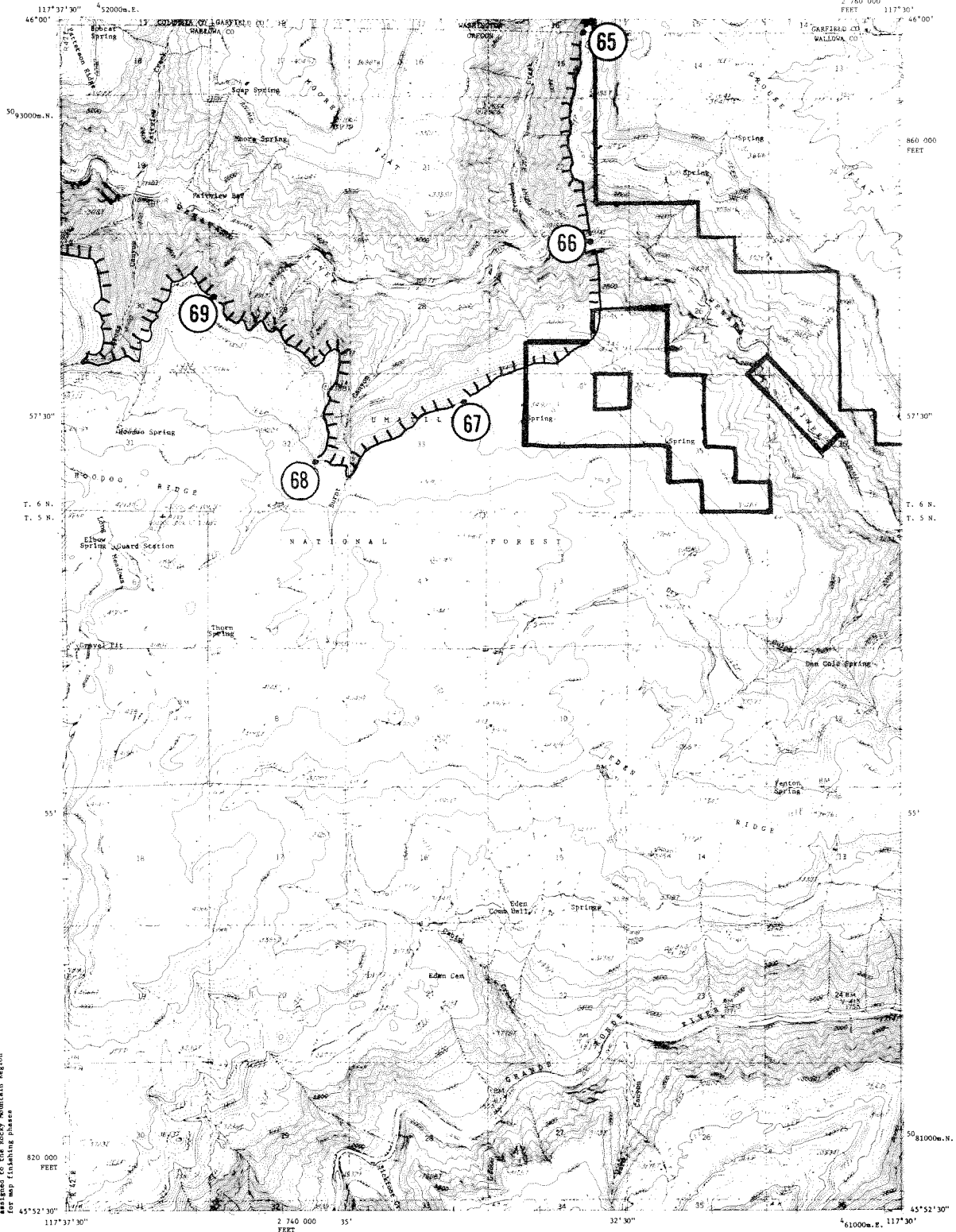
LEGEND



Quad Sheet Number 8

Wilderness Boundary
Forest Boundary
County Line
Other Ownership
Angle Points

UNITED STATES
DEPARTMENT OF THE INTERIOR
GEOLOGICAL SURVEY



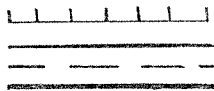
This is a Pacific Region Project assigned to the Rocky Mountain Region for map finishing phase

Maped by Pacific Region, Geological Survey
This is an unedited copy of an original manuscript including field additions made in 1967

CONTOUR INTERVAL 40 FEET
DOTTED LINES CROSSING RIVER REPRESENT 20 FOOT CONTOURS
DATUM IS MEAN SEA LEVEL

EDEN, OREG.-WASH.
GARFIELD CO WALLOWA CO COLUMBIA CO

FROM THE
Flood Proj 0-64



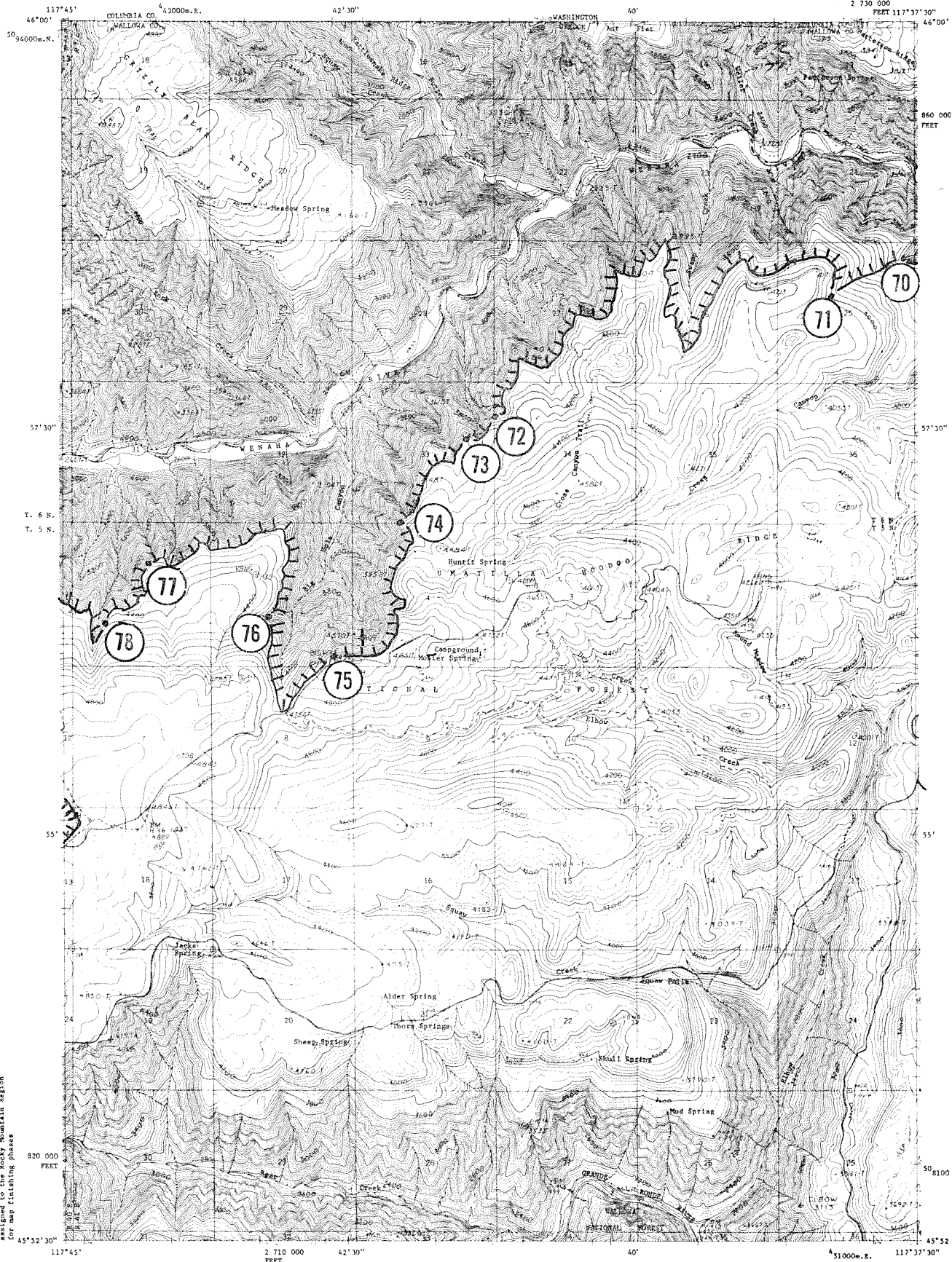
Wilderness Boundary
Forest Boundary
County Line
Other Ownership
Angle Points

Corrected July 1981

UNITED STATES
DEPARTMENT OF THE INTERIOR
GEOLOGICAL SURVEY

Quad Sheet Number 9

ELBOW CREEK, OREG.-WASH.
COLUMBIA CO WALLAWA CO
2 730 000
FEET 117°37'30"



This is a Pacific Region Project
assigned to the Rocky Mountain Region
for map finishing phase

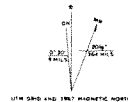
Mapped by Pacific Region, Geological Survey

This is an unedited copy of an original manuscript including field additions made in 1981

- BOUNDARY AND LOCATION SYMBOLS
- | | |
|--|-------------------------------------|
| 1. Contour, 40-foot interval | 2. Forest boundary, as shown on map |
| 3. Contour, 100-foot interval | 3. Road, as shown on map |
| 4. Contour, 200-foot interval | 4. Road, as shown on map |
| 5. Contour, 400-foot interval | 5. Road, as shown on map |
| 6. Contour, 800-foot interval | 6. Road, as shown on map |
| 7. Contour, 1600-foot interval | 7. Road, as shown on map |
| 8. Contour, 3200-foot interval | 8. Road, as shown on map |
| 9. Contour, 6400-foot interval | 9. Road, as shown on map |
| 10. Contour, 12800-foot interval | 10. Road, as shown on map |
| 11. Contour, 25600-foot interval | 11. Road, as shown on map |
| 12. Contour, 51200-foot interval | 12. Road, as shown on map |
| 13. Contour, 102400-foot interval | 13. Road, as shown on map |
| 14. Contour, 204800-foot interval | 14. Road, as shown on map |
| 15. Contour, 409600-foot interval | 15. Road, as shown on map |
| 16. Contour, 819200-foot interval | 16. Road, as shown on map |
| 17. Contour, 1638400-foot interval | 17. Road, as shown on map |
| 18. Contour, 3276800-foot interval | 18. Road, as shown on map |
| 19. Contour, 6553600-foot interval | 19. Road, as shown on map |
| 20. Contour, 13107200-foot interval | 20. Road, as shown on map |
| 21. Contour, 26214400-foot interval | 21. Road, as shown on map |
| 22. Contour, 52428800-foot interval | 22. Road, as shown on map |
| 23. Contour, 104857600-foot interval | 23. Road, as shown on map |
| 24. Contour, 209715200-foot interval | 24. Road, as shown on map |
| 25. Contour, 419430400-foot interval | 25. Road, as shown on map |
| 26. Contour, 838860800-foot interval | 26. Road, as shown on map |
| 27. Contour, 1677721600-foot interval | 27. Road, as shown on map |
| 28. Contour, 3355443200-foot interval | 28. Road, as shown on map |
| 29. Contour, 6710886400-foot interval | 29. Road, as shown on map |
| 30. Contour, 13421772800-foot interval | 30. Road, as shown on map |
| 31. Contour, 26843545600-foot interval | 31. Road, as shown on map |
| 32. Contour, 53687091200-foot interval | 32. Road, as shown on map |
| 33. Contour, 107374182400-foot interval | 33. Road, as shown on map |
| 34. Contour, 214748364800-foot interval | 34. Road, as shown on map |
| 35. Contour, 429496729600-foot interval | 35. Road, as shown on map |
| 36. Contour, 858993459200-foot interval | 36. Road, as shown on map |
| 37. Contour, 1717986918400-foot interval | 37. Road, as shown on map |
| 38. Contour, 3435973836800-foot interval | 38. Road, as shown on map |
| 39. Contour, 6871947673600-foot interval | 39. Road, as shown on map |
| 40. Contour, 13743895347200-foot interval | 40. Road, as shown on map |
| 41. Contour, 27487790694400-foot interval | 41. Road, as shown on map |
| 42. Contour, 54975581388800-foot interval | 42. Road, as shown on map |
| 43. Contour, 109951162777600-foot interval | 43. Road, as shown on map |
| 44. Contour, 219902325555200-foot interval | 44. Road, as shown on map |
| 45. Contour, 439804651110400-foot interval | 45. Road, as shown on map |
| 46. Contour, 879609302220800-foot interval | 46. Road, as shown on map |
| 47. Contour, 1759218604441600-foot interval | 47. Road, as shown on map |
| 48. Contour, 3518437208883200-foot interval | 48. Road, as shown on map |
| 49. Contour, 7036874417766400-foot interval | 49. Road, as shown on map |
| 50. Contour, 14073748835532800-foot interval | 50. Road, as shown on map |
| 51. Contour, 28147497671065600-foot interval | 51. Road, as shown on map |
| 52. Contour, 56294995342131200-foot interval | 52. Road, as shown on map |
| 53. Contour, 112589990684262400-foot interval | 53. Road, as shown on map |
| 54. Contour, 225179981368524800-foot interval | 54. Road, as shown on map |
| 55. Contour, 450359962737049600-foot interval | 55. Road, as shown on map |
| 56. Contour, 900719925474099200-foot interval | 56. Road, as shown on map |
| 57. Contour, 1801439850948198400-foot interval | 57. Road, as shown on map |
| 58. Contour, 3602879701896396800-foot interval | 58. Road, as shown on map |
| 59. Contour, 7205759403792793600-foot interval | 59. Road, as shown on map |
| 60. Contour, 14411518807585587200-foot interval | 60. Road, as shown on map |
| 61. Contour, 28823037615171174400-foot interval | 61. Road, as shown on map |
| 62. Contour, 57646075230342348800-foot interval | 62. Road, as shown on map |
| 63. Contour, 115292150460684697600-foot interval | 63. Road, as shown on map |
| 64. Contour, 230584300921369395200-foot interval | 64. Road, as shown on map |
| 65. Contour, 461168601842738790400-foot interval | 65. Road, as shown on map |
| 66. Contour, 922337203685477580800-foot interval | 66. Road, as shown on map |
| 67. Contour, 1844674407370955161600-foot interval | 67. Road, as shown on map |
| 68. Contour, 3689348814741910323200-foot interval | 68. Road, as shown on map |
| 69. Contour, 7378697629483820646400-foot interval | 69. Road, as shown on map |
| 70. Contour, 14757395258967641292800-foot interval | 70. Road, as shown on map |
| 71. Contour, 29514790517935282585600-foot interval | 71. Road, as shown on map |
| 72. Contour, 59029581035870565171200-foot interval | 72. Road, as shown on map |
| 73. Contour, 118059162071741130342400-foot interval | 73. Road, as shown on map |
| 74. Contour, 236118324143482260684800-foot interval | 74. Road, as shown on map |
| 75. Contour, 472236648286964521369600-foot interval | 75. Road, as shown on map |
| 76. Contour, 944473296573929042739200-foot interval | 76. Road, as shown on map |
| 77. Contour, 1888946593147858085478400-foot interval | 77. Road, as shown on map |
| 78. Contour, 3777893186295716170956800-foot interval | 78. Road, as shown on map |
| 79. Contour, 7555786372591432341913600-foot interval | 79. Road, as shown on map |
| 80. Contour, 15111572745182864683827200-foot interval | 80. Road, as shown on map |
| 81. Contour, 30223145490365729367654400-foot interval | 81. Road, as shown on map |
| 82. Contour, 60446290980731458735308800-foot interval | 82. Road, as shown on map |
| 83. Contour, 120892581961462917470617600-foot interval | 83. Road, as shown on map |
| 84. Contour, 241785163922925834941235200-foot interval | 84. Road, as shown on map |
| 85. Contour, 483570327845851669882470400-foot interval | 85. Road, as shown on map |
| 86. Contour, 967140655691703339764940800-foot interval | 86. Road, as shown on map |
| 87. Contour, 1934281311383406679529881600-foot interval | 87. Road, as shown on map |
| 88. Contour, 3868562622766813359059763200-foot interval | 88. Road, as shown on map |
| 89. Contour, 7737125245533626718119526400-foot interval | 89. Road, as shown on map |
| 90. Contour, 15474250491067253436239052800-foot interval | 90. Road, as shown on map |
| 91. Contour, 30948500982134506872478105600-foot interval | 91. Road, as shown on map |
| 92. Contour, 61897001964269013744956211200-foot interval | 92. Road, as shown on map |
| 93. Contour, 123794003928538027489912422400-foot interval | 93. Road, as shown on map |
| 94. Contour, 247588007857076054979824844800-foot interval | 94. Road, as shown on map |
| 95. Contour, 495176015714152109959649689600-foot interval | 95. Road, as shown on map |
| 96. Contour, 990352031428304219919299379200-foot interval | 96. Road, as shown on map |
| 97. Contour, 1980704062856608439838598758400-foot interval | 97. Road, as shown on map |
| 98. Contour, 3961408125713216879677197516800-foot interval | 98. Road, as shown on map |
| 99. Contour, 7922816251426433759354395033600-foot interval | 99. Road, as shown on map |
| 100. Contour, 15845632502852867518708790067200-foot interval | 100. Road, as shown on map |

CONTOUR INTERVAL 40 FEET
DATUM IS MEAN SEA LEVEL

NOTE



ELBOW CREEK, OREG.-WASH.
COLUMBIA CO WALLAWA CO

From NW
100 Feet

WENAH-TUCANNON WILDERNESS BOUNDARY
The exterior boundary of the Wenaha-Tucannon Wilderness, Umatilla National Forest, Pacific Northwest Region, May 1978, as covered in the National Wilderness System by the Endangered American Wilderness Act of 1978.

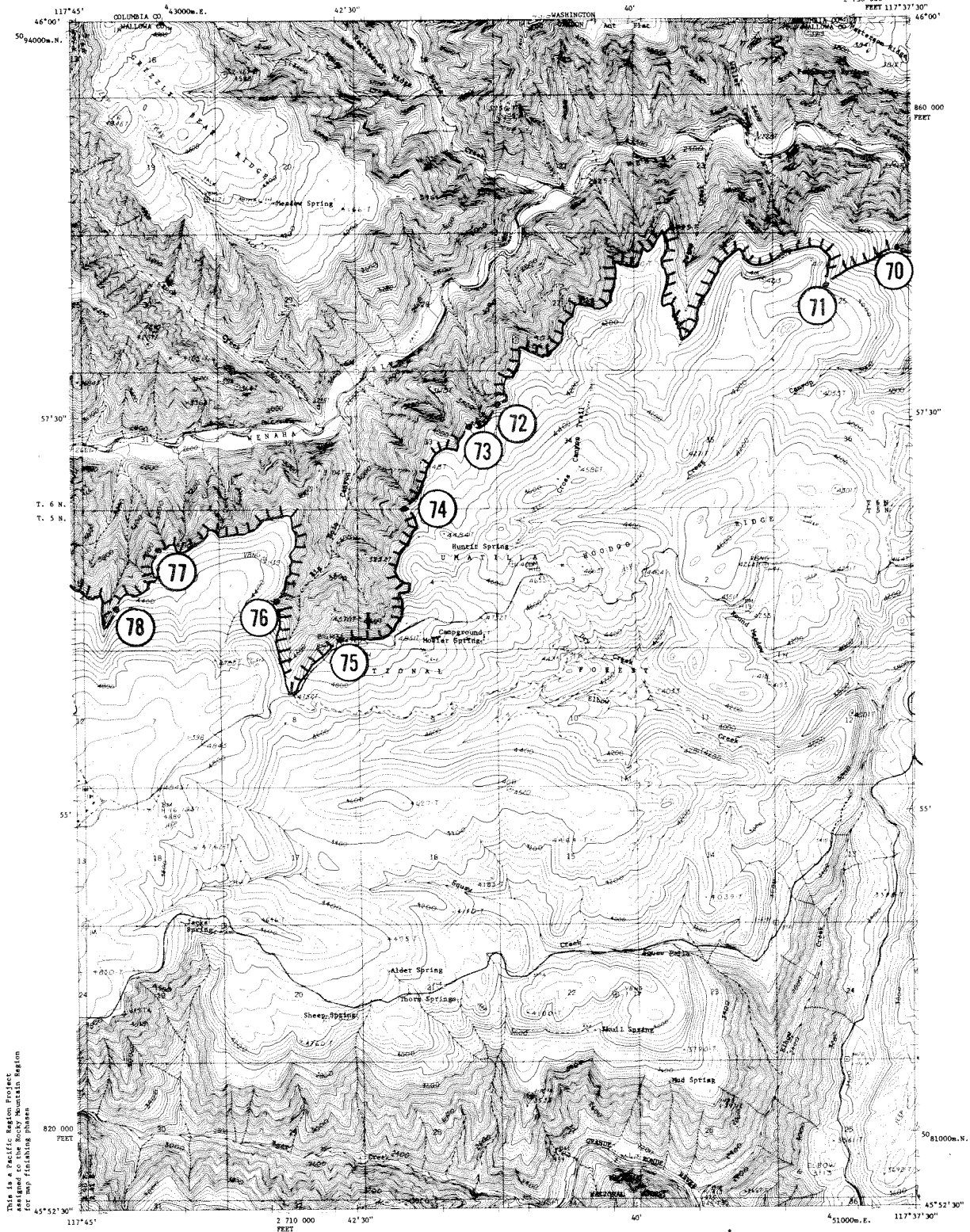
The exterior boundary of the Wenaha-Tucannon Wilderness, Umatilla National Forest, Pacific Northwest Region, May 1978 as covered in the National Wilderness Preservation System by the Endangered American Wilderness Act of 1978.

Quad Sheet Number **9**

Wilderness Boundary
Forest Boundary
County Line
Other Ownership
Angle Points

UNITED STATES
DEPARTMENT OF THE INTERIOR
GEOLOGICAL SURVEY

ELBOW CREEK, OREG.-WASH.
COLUMBIA CO WALLOWA CO
2 320 000



Mapped by Pacific Region, Geological Survey
This is an unedited copy of an original manuscript including field additions made in 1967

[illegible]

CONTOUR INTERVAL 40 FEET
DATUM IS MEAN SEA LEVEL

NOTE

This project is open to you for about 10 weeks and approximately 10 new students every 3 weeks. Suggestions and please make suggestions on the face of the map, sign and return the copy within 10 to 15 days.

RETURN TO
ROBERT MOUNTAIN MEADOW ENGINEER
D. S. GEOLOGICAL SURVEY
FEDERAL CENTER DENVER, COLORADO 80202

ELBOW CREEK, OREG.-WASH.
COLUMBIA CO WALLOWA CO NW Oreg.

Flora Proj. Oreg.

The exterior boundary of the Wenaha-Tucannon Wilderness, Umatilla National Forest, Pacific Northwest Region, May 1978 as covered in the National Wilderness Preservation System by the Endangered American Wilderness Act of 1978.

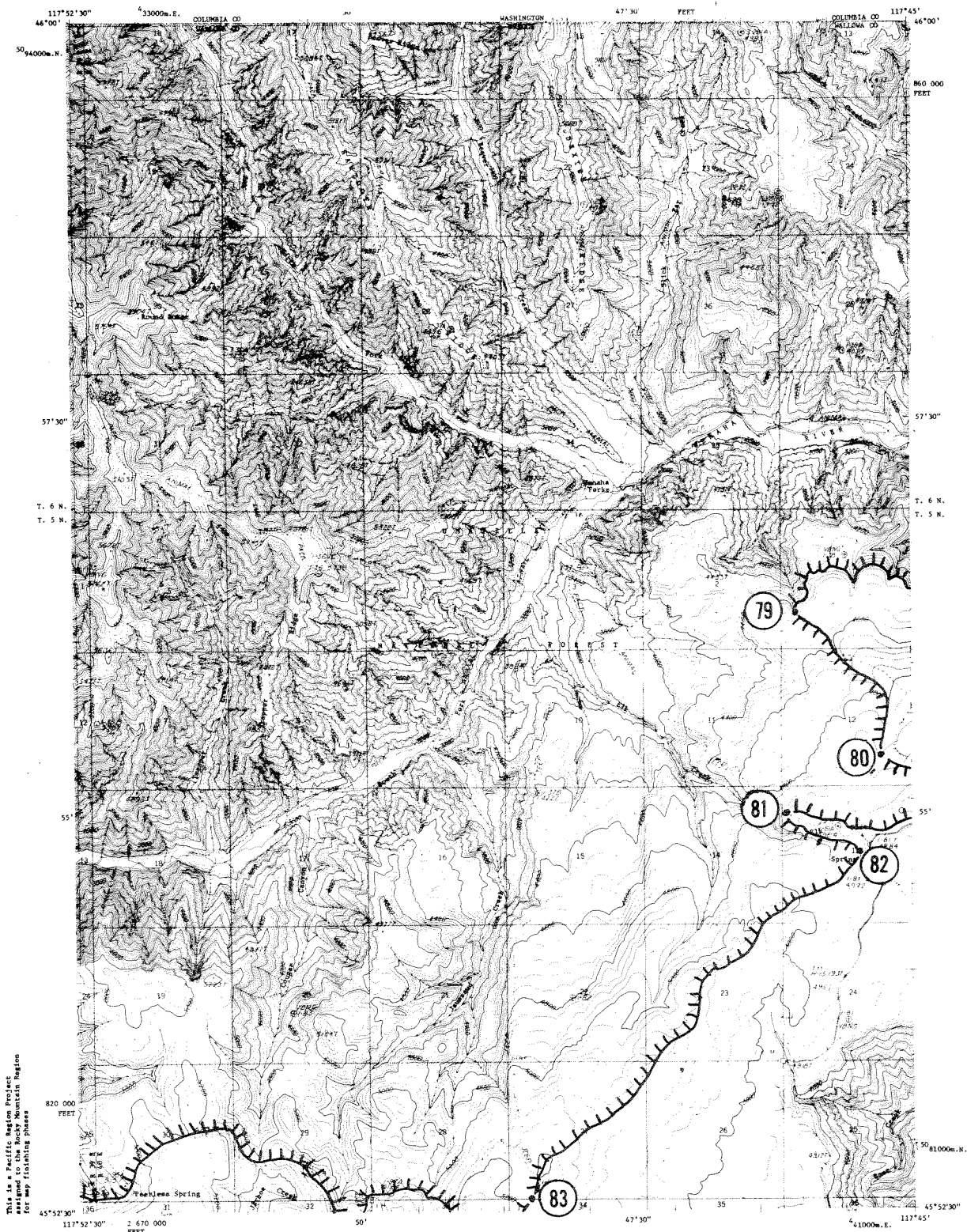
Wilderness Boundary
Forest Boundary
County Line
Other Ownership
Angle Points

Quad Sheet Number 10

UNITED STATES
DEPARTMENT OF THE INTERIOR
GEOLOGICAL SURVEY

Subject -
be published at

WYMANA FORKS, OREG.
WALLOWA CO



This is a Pacific Region Project assigned to the Rocky Mountain Region for map finishing phases

Mapped by Pacific Region, Geological Survey
This is an unedited copy of an original manu-
script including field additions made in 1967

[illegible]

CONTOUR INTERVAL 40 FEET
DASHED LINES REPRESENT 20-FOOT CONTOURS
DATUM IS MEAN SEA LEVEL

NOTES

DECLINATION AT CENTER OF SHEET

This paper is sent to you for your review and comment.

If you observe errors or have suggestions please mail
 corrections on the back of the map, sign and return to
 Lady Ruthven 7 E W Scott

RETURN TO

ROCKY MOUNTAIN REGION ENGINEER

WENAH FORKS, OREG.
WALLOWA CO

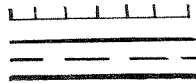
Elgin 2 NE
Flora Proj. Oreg.

162 N.E

WENAH-TUCANNON WILDERNESS BOUNDARY

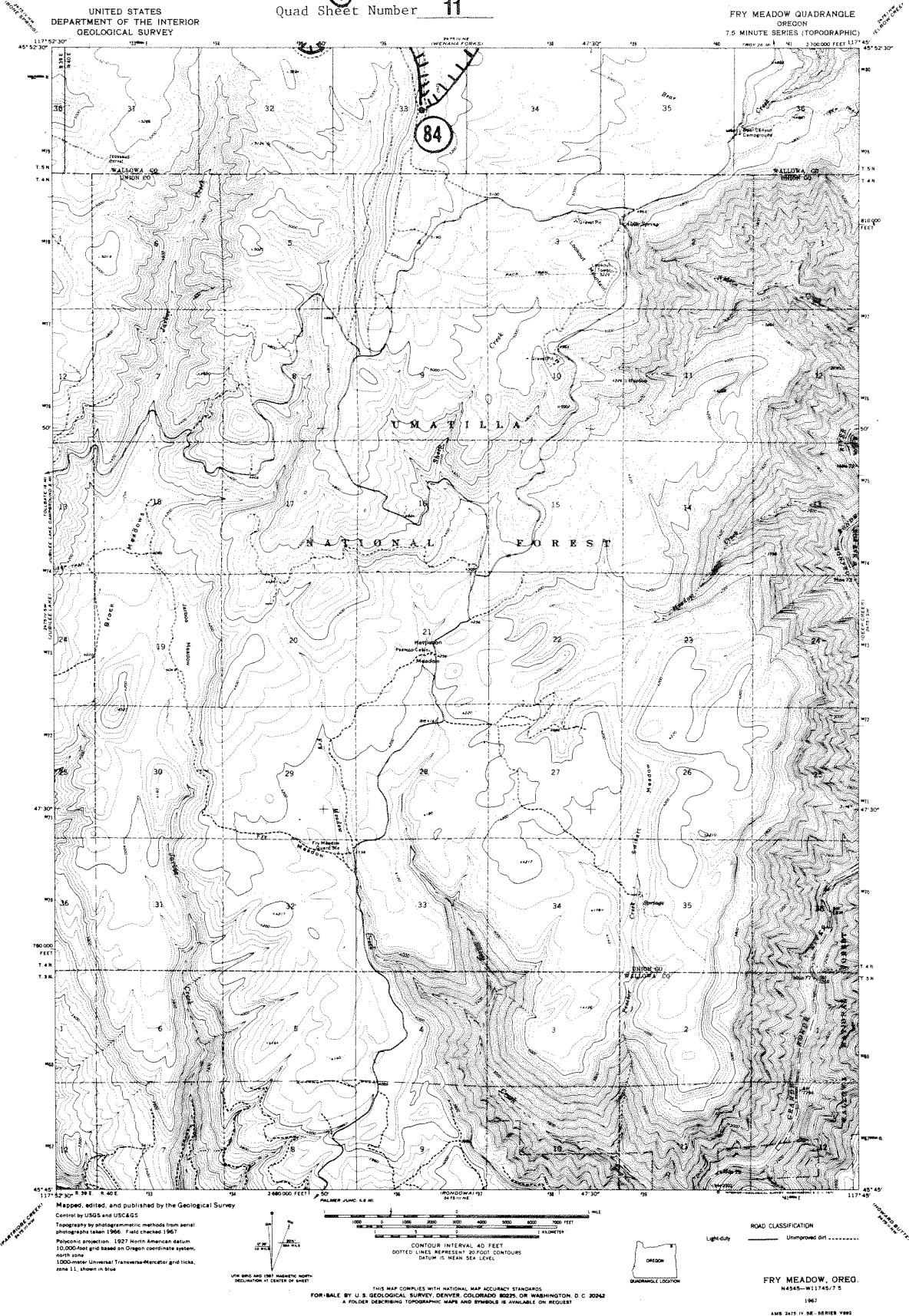
The exterior boundary of the Wenaha-Tucannon Wilderness, Umatilla National Forest, Pacific Northwest Region, May 1978 as covered in the National Wilderness Preservation System by the Endangered American Wilderness Act of 1978.

LEGEND



Wilderness Boundary
Forest Boundary
County Line
Other Ownership
Angle Points

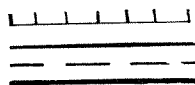
Quad Sheet Number **11**



WENAH-TUCANNON WILDERNESS BOUNDARY

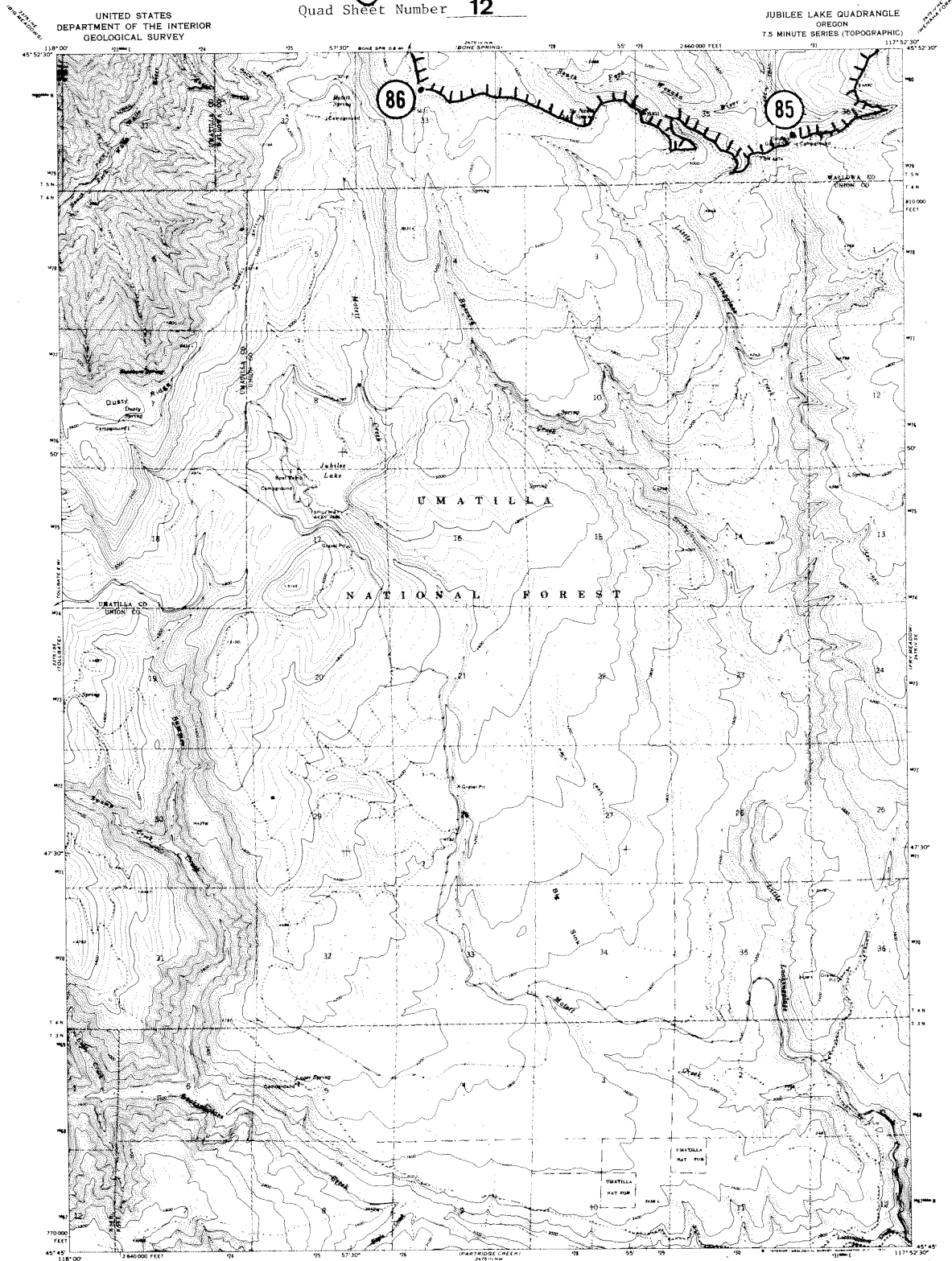
The exterior boundary of the Wenaha-Tucannon Wilderness, Umatilla National Forest, Pacific Northwest Region, May 1978 as covered in the National Wilderness Preservation System by the Endangered American Wilderness Act of 1978.

LEGEND



Wilderness Boundary
Forest Boundary
County Line
Other Ownership
Angle Points

Quad Sheet Number 12



Mapped, edited, and published by the Geological Survey

Control by USGS and USCGS
Topography by photogrammetric methods from aerial photographs taken 1966. Field checked 1967.
Projection: projection, 1927 North American Datum, 10,000 foot interval based on Oregon coordinate system, north zone.
1:50,000-scale Universal Transverse Mercator grid ticks, zone 11, shown in blue.

UTM GRID AND 1983 MEAN TIME NORTH DECLINATION AT CENTER OF SHEET

THIS MAP COMPLIES WITH NATIONAL MAP ACCURACY STANDARDS
FOR SALE BY U.S. GEOLOGICAL SURVEY, DENVER, COLORADO 80225, OR WASHINGTON, D.C. 20242
A FOLDER DESCRIBING TOPOGRAPHIC MAPS AND SYMBOLS IS AVAILABLE ON REQUEST



ROAD CLASSIFICATION
Light duty
Unimproved dirt

JUBILEE LAKE, OREG.
N4545-W11752-5/7.5

1967

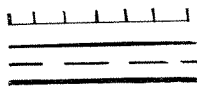
AMS 2475 IV SW SERIES 1982

FILE COPY

WENAH-TUCANNON WILDERNESS BOUNDARY

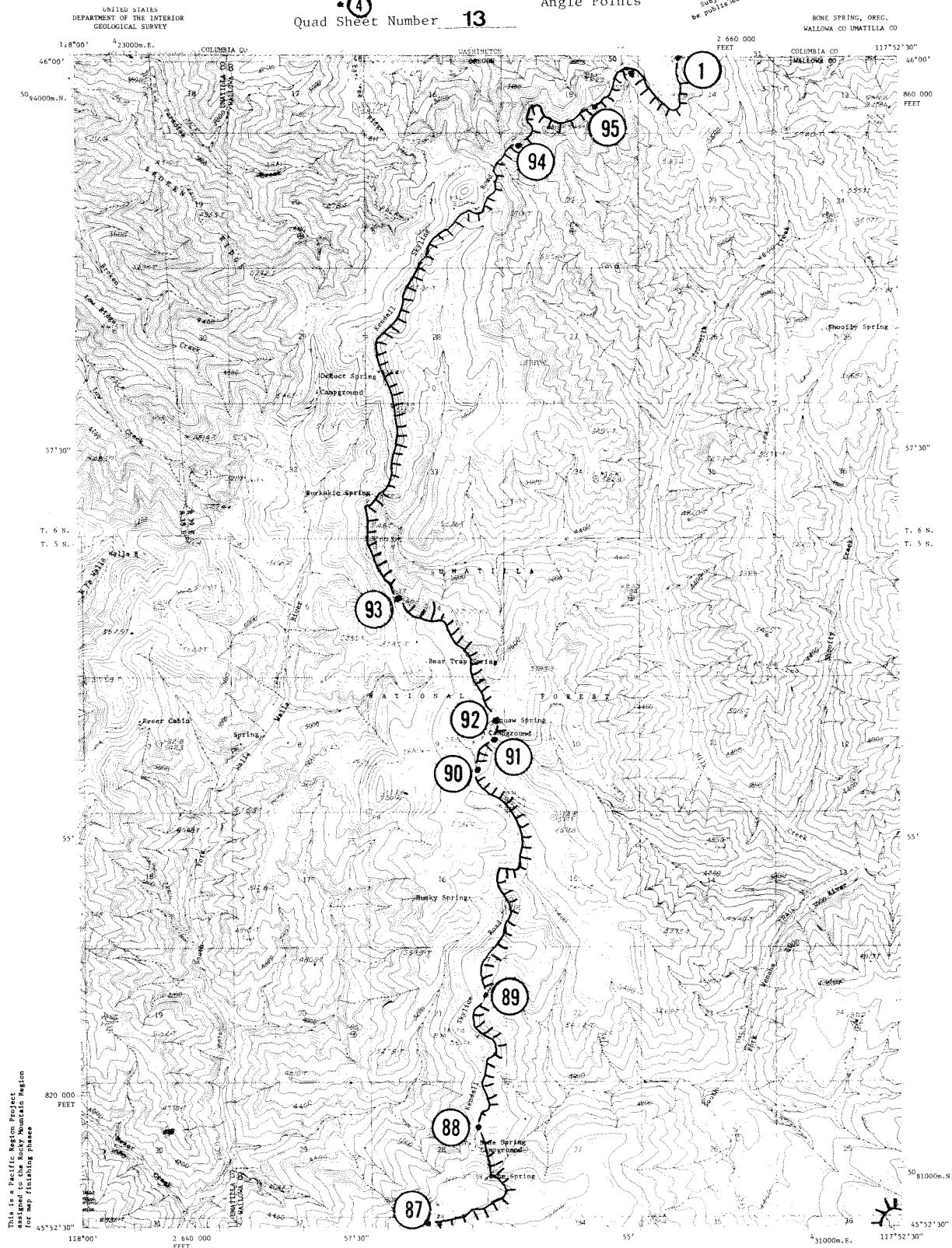
The exterior boundary of the Wenaha-Tucannon Wilderness, Umatilla National Forest, Pacific Northwest Region, May 1978 as covered in the National Wilderness Preservation System by the Endangered American Wilderness Act of 1978.

LEGEND



Quad Sheet Number 13

Wilderness Boundary
Forest Boundary
County Line
Other Ownership
Angle Points



This is a Pacific Region Project assigned to the Rocky Mountain Region for map illustrating phase

Mapped by Pacific Region, Geological Survey
This is an unedited copy of an original manuscript including field additions made in 1967

SYMBOLS AND ABBREVIATIONS
 1. Line style: solid, dashed, dotted, etc.
 2. Point style: solid, open, etc.
 3. Text style: bold, italic, etc.
 4. Color style: black, white, etc.
 5. Shape style: circle, square, etc.
 6. Size style: large, small, etc.
 7. Orientation style: horizontal, vertical, etc.
 8. Material style: wood, stone, etc.
 9. Texture style: smooth, rough, etc.
 10. Pattern style: solid, dashed, etc.

CONTOUR INTERVAL 40 FEET
DATUM IS MEAN SEA LEVEL

NOTE

1. This map is a preliminary map and should not be used for any purpose other than for general reference.
 2. The map is based on the best available information and is subject to change without notice.
 3. The map is not a legal document and should not be used for any legal purpose.
 4. The map is not a survey and should not be used for any survey purpose.
 5. The map is not a plan and should not be used for any plan purpose.

BONE SPRING, OREG.
WALLAWA CO. UMATILLA CO.

Scale 1:50,000
Phone 301