

**BAILEY CREEK
WILD & SCENIC RIVER
BRIDGER-TETON NATIONAL FOREST
INTERMOUNTAIN REGION**

NOVEMBER 19, 2019

**Craig Thomas Snake Headwaters Legacy Act of 2008
(PL 111-11 Mar. 30th, 2009)**

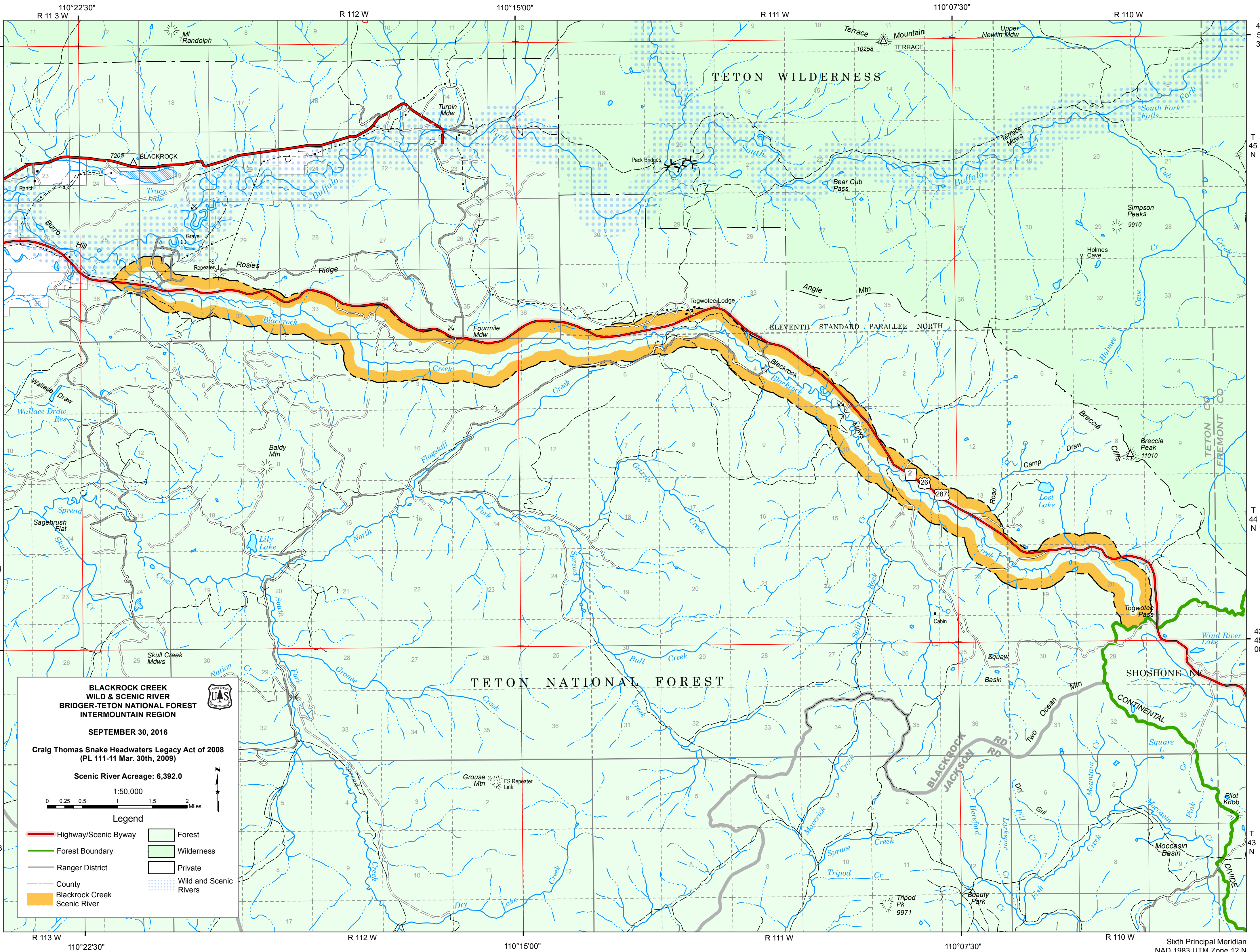
Wild River Acreage: 2,729.8

1:50,000

0 0.25 0.5 1 1.5 2 Miles

Legend:

- Highway/Scenic Byway
- Forest Boundary
- County
- Bailey Creek Wild River
- Forest
- Wilderness Study Area
- Wilderness
- Private
- Wild and Scenic Rivers



**BLACKROCK CREEK
WILD & SCENIC RIVER
BRIDGER-TETON NATIONAL FOREST
INTERMOUNTAIN REGION**

SEPTEMBER 30, 2016

**Craig Thomas Snake Headwaters Legacy Act of 2008
(PL 111-11 Mar. 30th, 2009)**

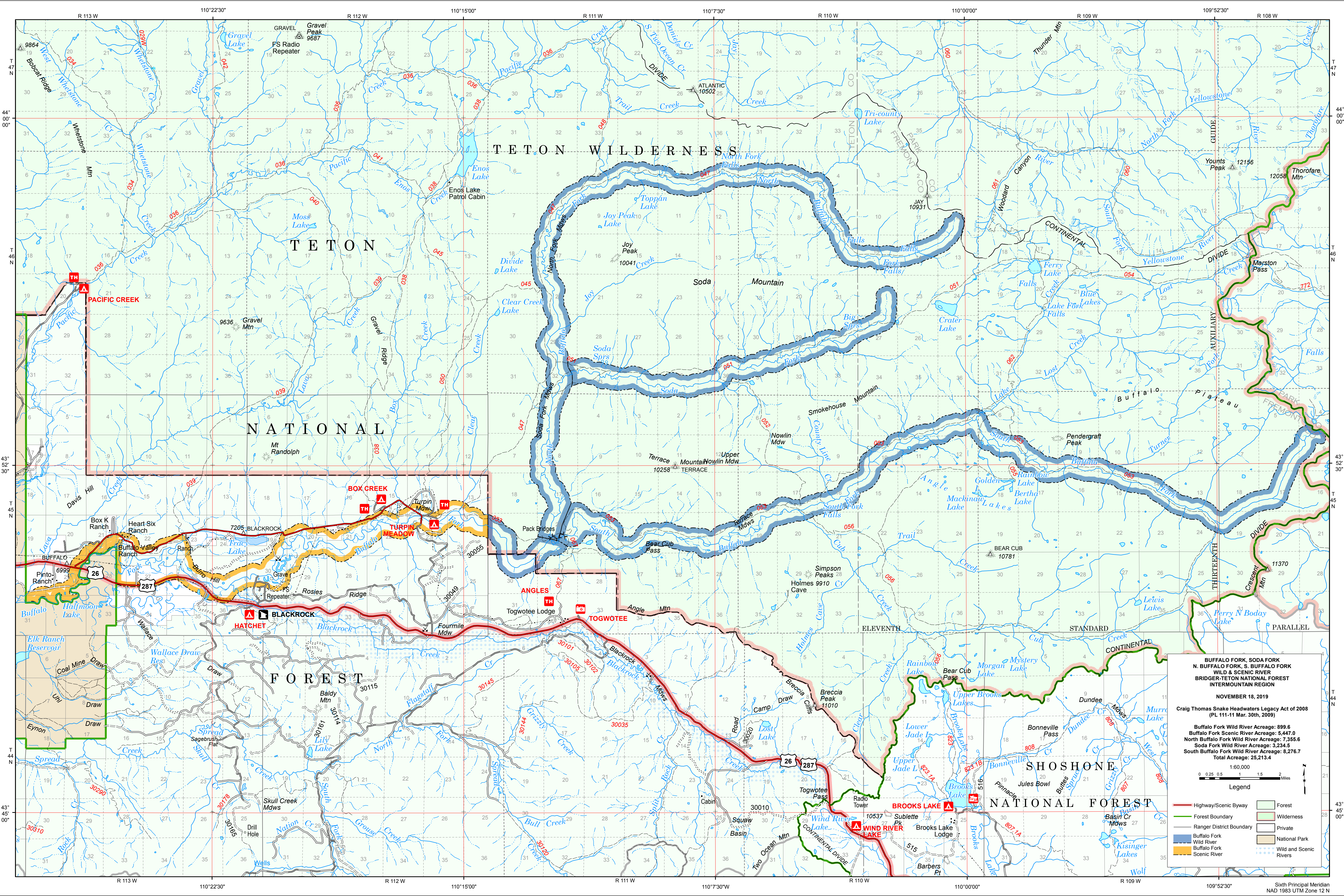
Scenic River Acreage: 6,392.0

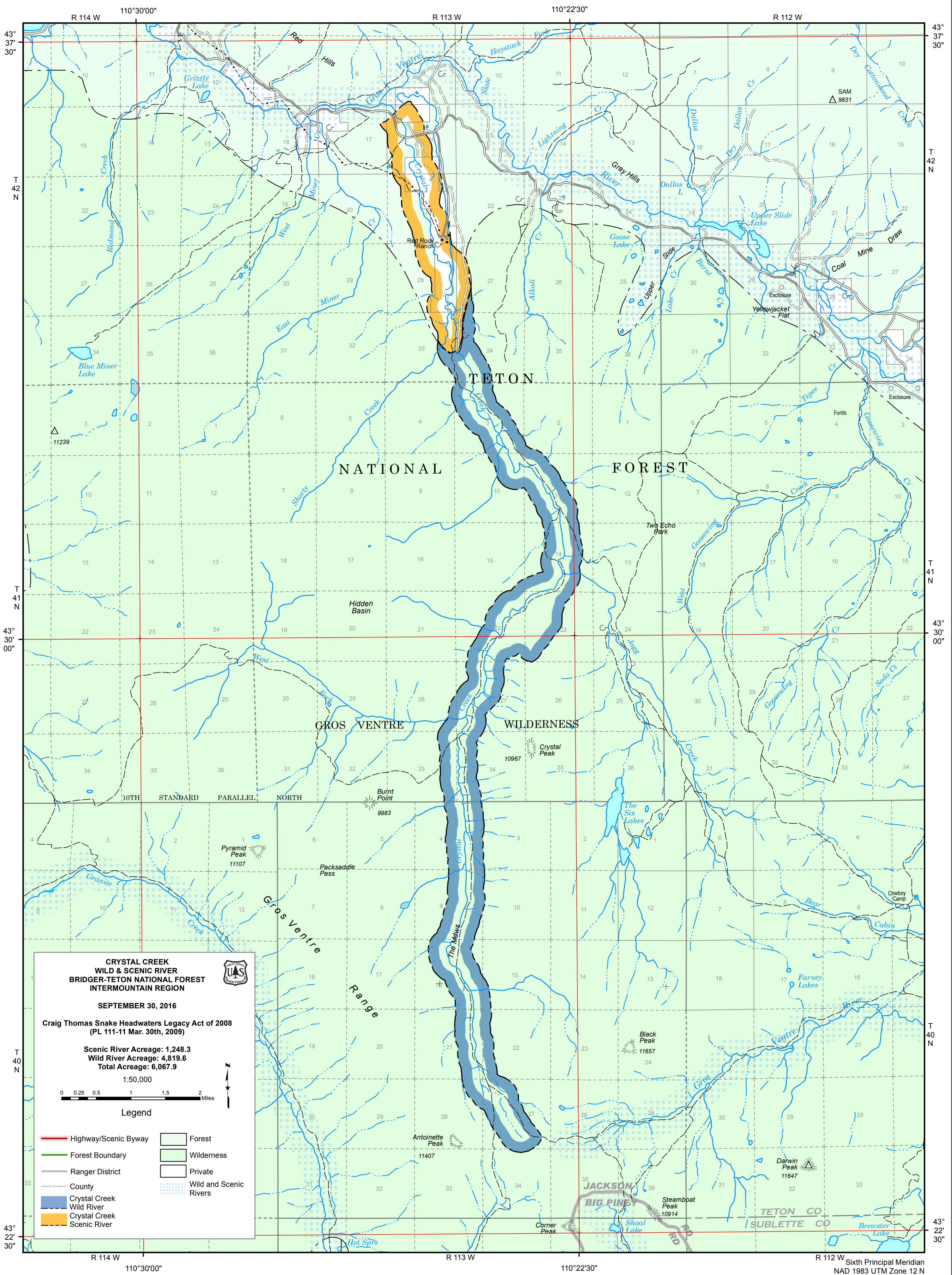
1:50,000

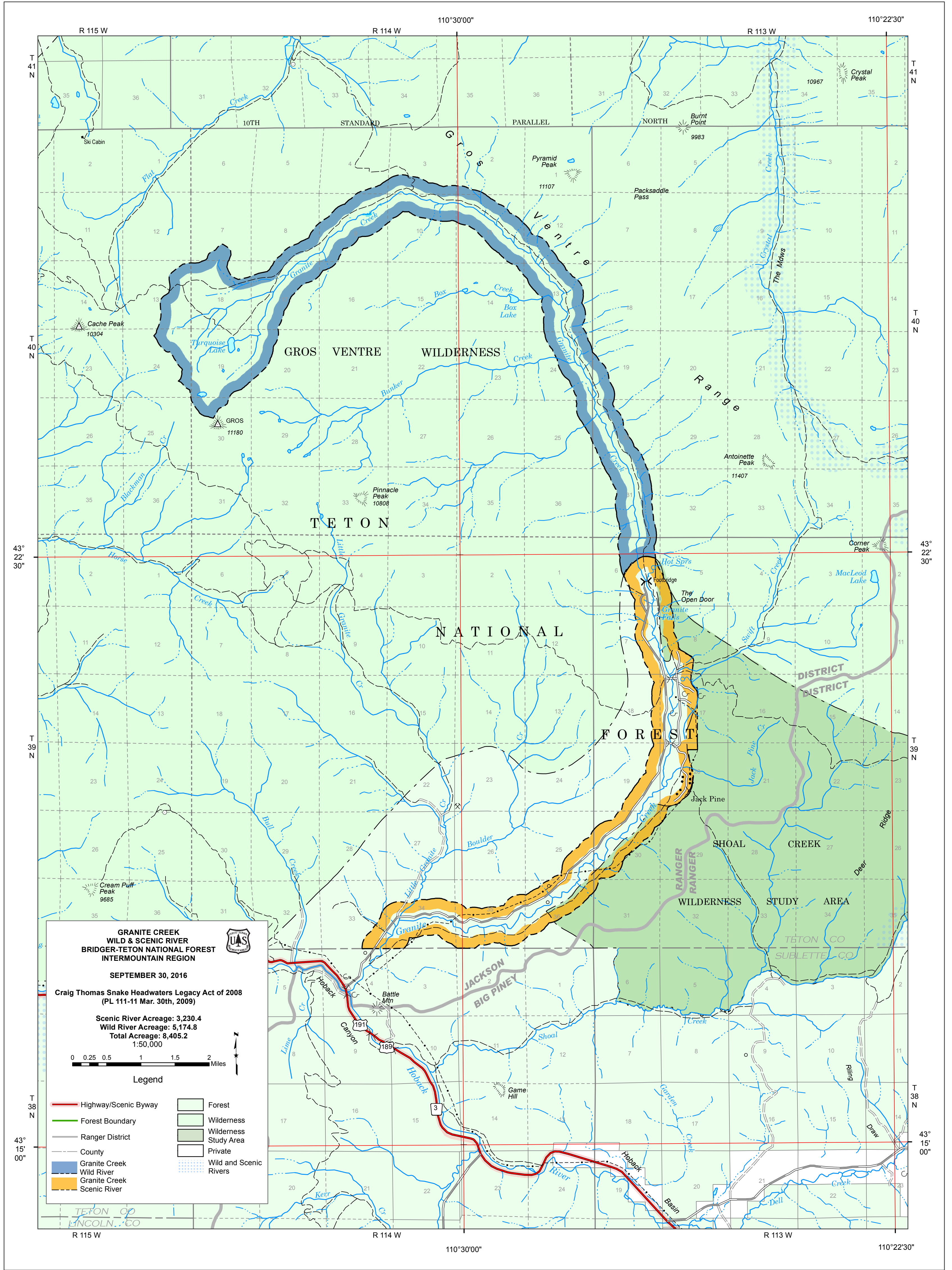
0 0.25 0.5 1 1.5 2 Miles

Legend

Highway/Scenic Byway	Forest
Forest Boundary	Wilderness
Ranger District	Private
County	Wild and Scenic Rivers
Blackrock Creek Scenic River	







**GRANITE CREEK
WILD & SCENIC RIVER
BRIDGER-TETON NATIONAL FOREST
INTERMOUNTAIN REGION**

SEPTEMBER 30, 2016

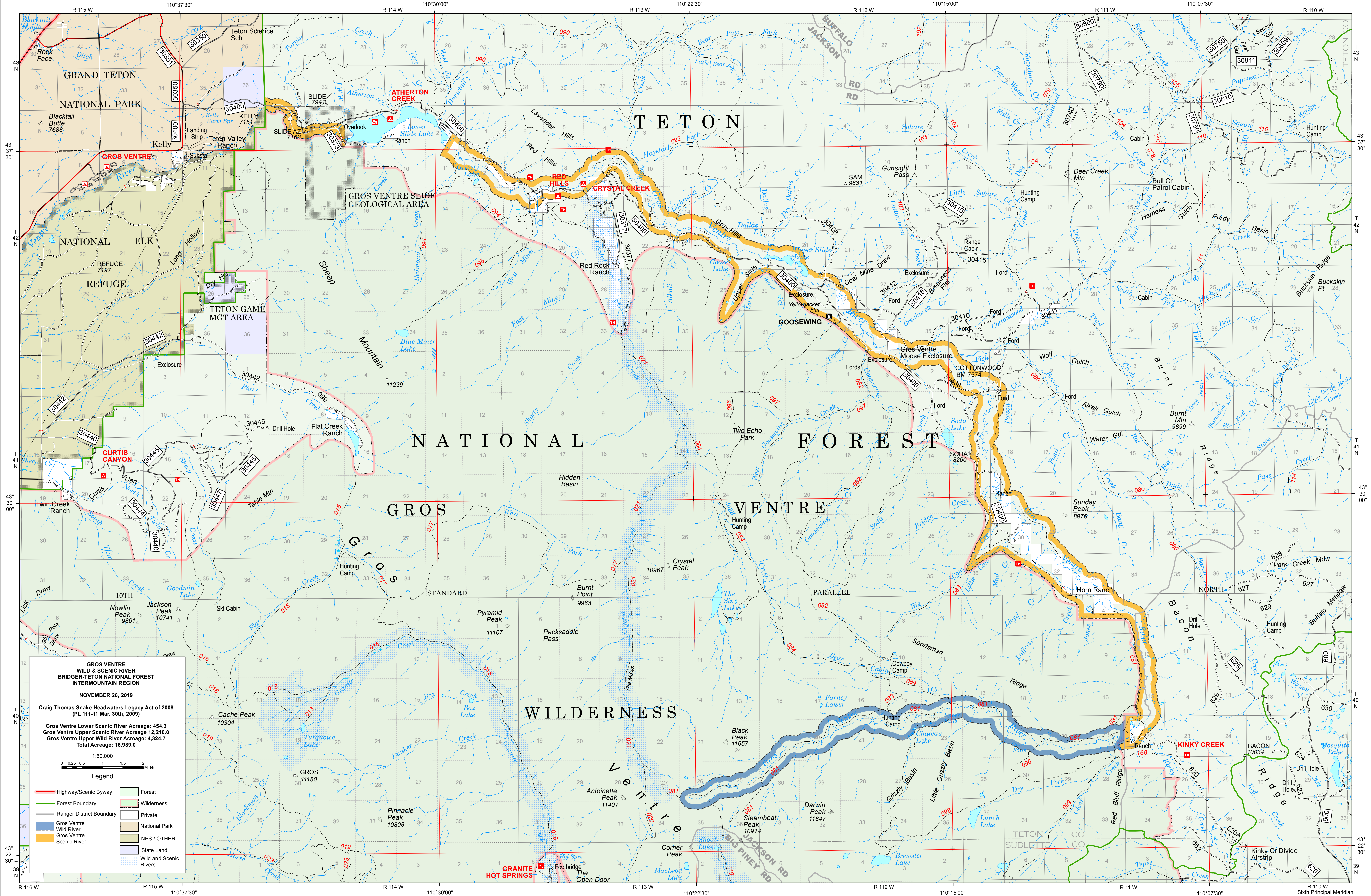
**Craig Thomas Snake Headwaters Legacy Act of 2008
(PL 111-11 Mar. 30th, 2009)**

**Scenic River Acreage: 3,230.4
Wild River Acreage: 5,174.8
Total Acreage: 8,405.2**

1:50,000

Legend

Highway/Scenic Byway	Forest
Forest Boundary	Wilderness
Ranger District	Wilderness Study Area
County	Private
Granite Creek	Wild and Scenic Rivers
Wild River	
Granite Creek	
Scenic River	



**GROS VENTRE
WILD & SCENIC RIVER
BRIDGER-TETON NATIONAL FOREST
INTERMOUNTAIN REGION**

NOVEMBER 26, 2019

Craig Thomas Snake Headwaters Legacy Act of 2008
(PL 111-11 Mar. 30th, 2009)

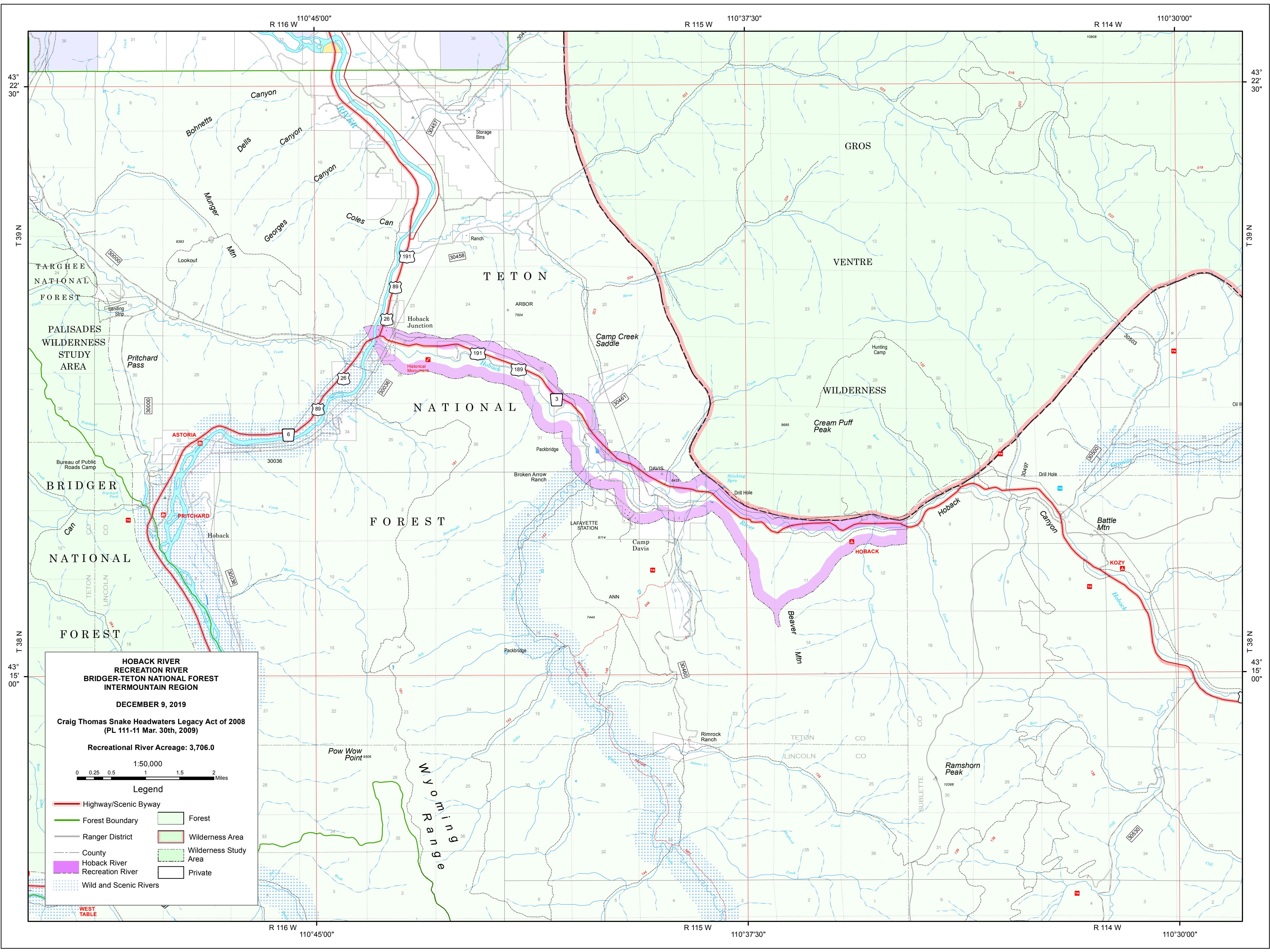
Gros Ventre Lower Scenic River Acreage: 454.3
Gros Ventre Upper Scenic River Acreage: 12,210.0
Gros Ventre Upper Wild River Acreage: 4,324.7
Total Acreage: 16,989.0

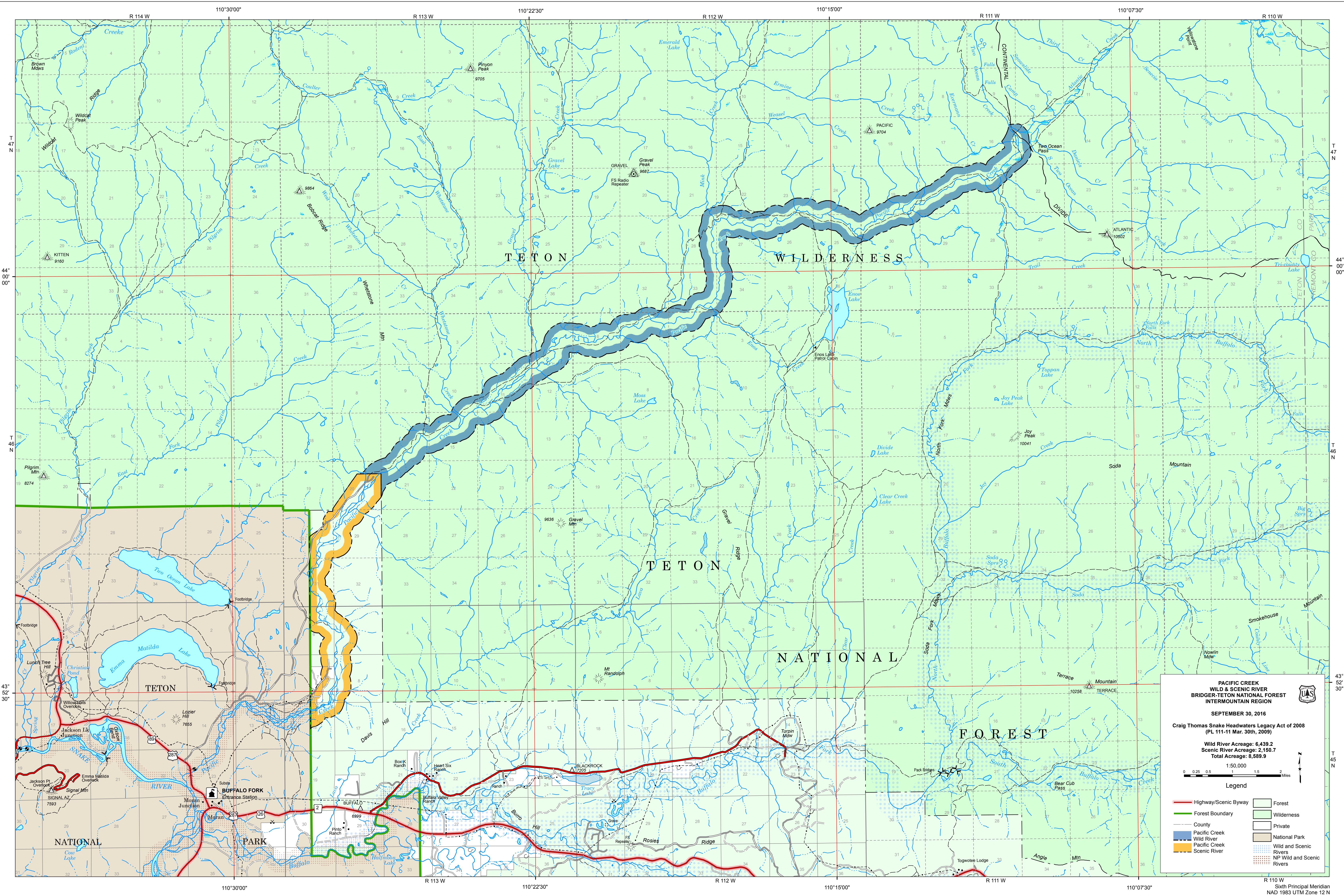
1:60,000

0 0.25 0.5 1 1.5 2 Miles

Legend

Highway/Scenic Byway	Forest
Forest Boundary	Wilderness
Ranger District Boundary	Private
Gros Ventre Wild River	National Park
Gros Ventre Scenic River	NPS / OTHER
	State Land
	Wild and Scenic Rivers





**PACIFIC CREEK
WILD & SCENIC RIVER
BRIDGER-TETON NATIONAL FOREST
INTERMOUNTAIN REGION**

SEPTEMBER 30, 2016

Craig Thomas Snake Headwaters Legacy Act of 2008
(PL 111-11 Mar. 30th, 2009)

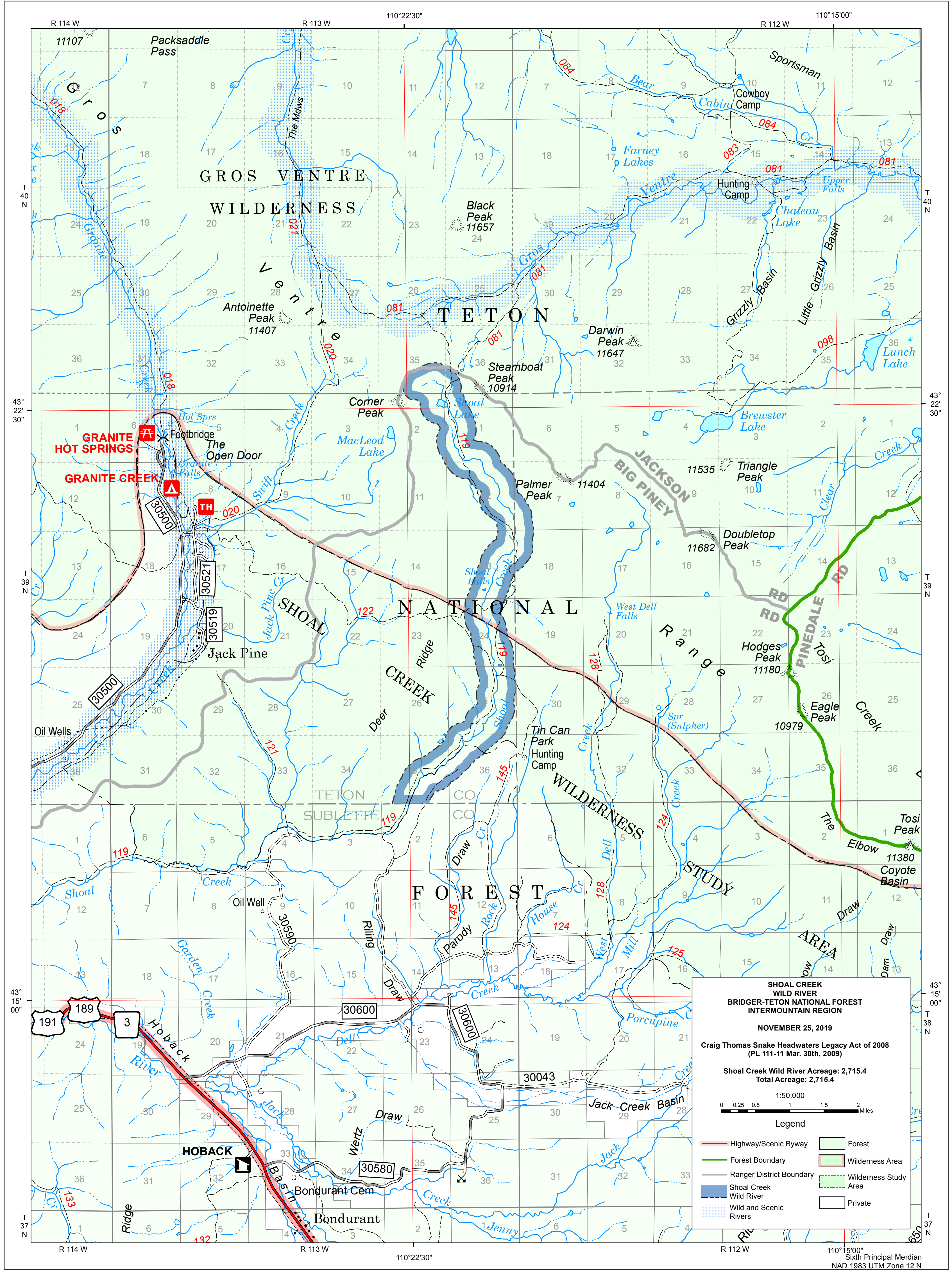
Wild River Acreage: 6,439.2
Scenic River Acreage: 2,150.7
Total Acreage: 8,589.9

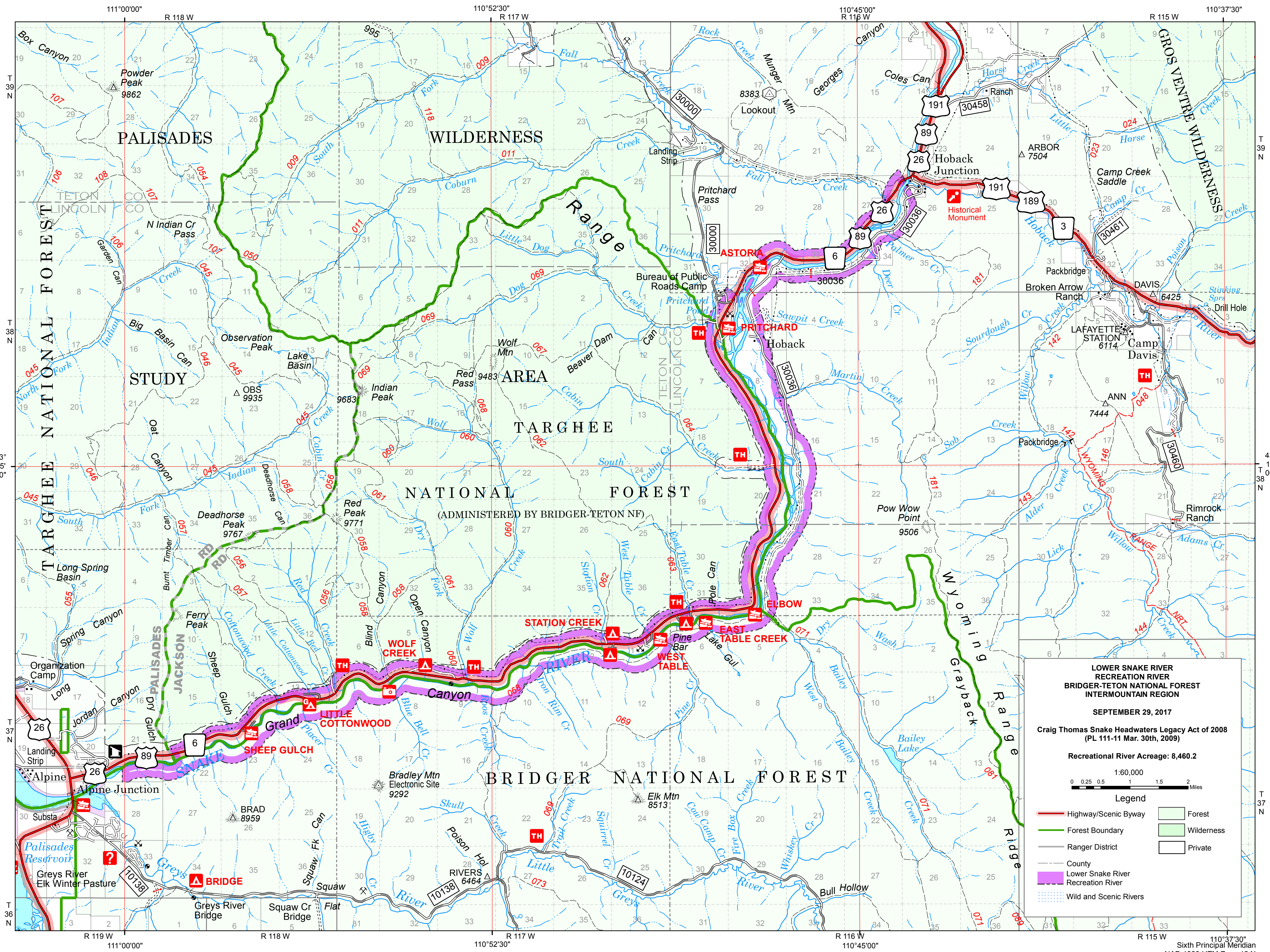
1:50,000

0 0.25 0.5 1 1.5 2 Miles

Legend

Highway/Scenic Byway	Forest
Forest Boundary	Wilderness
County	Private
Pacific Creek	National Park
Wild River	Wild and Scenic
Pacific Creek	NP Wild and Scenic
Scenic River	Rivers





LOWER SNAKE RIVER RECREATION RIVER
BRIDGER-TETON NATIONAL FOREST
INTERMOUNTAIN REGION

SEPTEMBER 29, 2017

Craig Thomas Snake Headwaters Legacy Act of 2008
 (PL 111-11 Mar. 30th, 2009)

Recreational River Acreage: 8,460.2

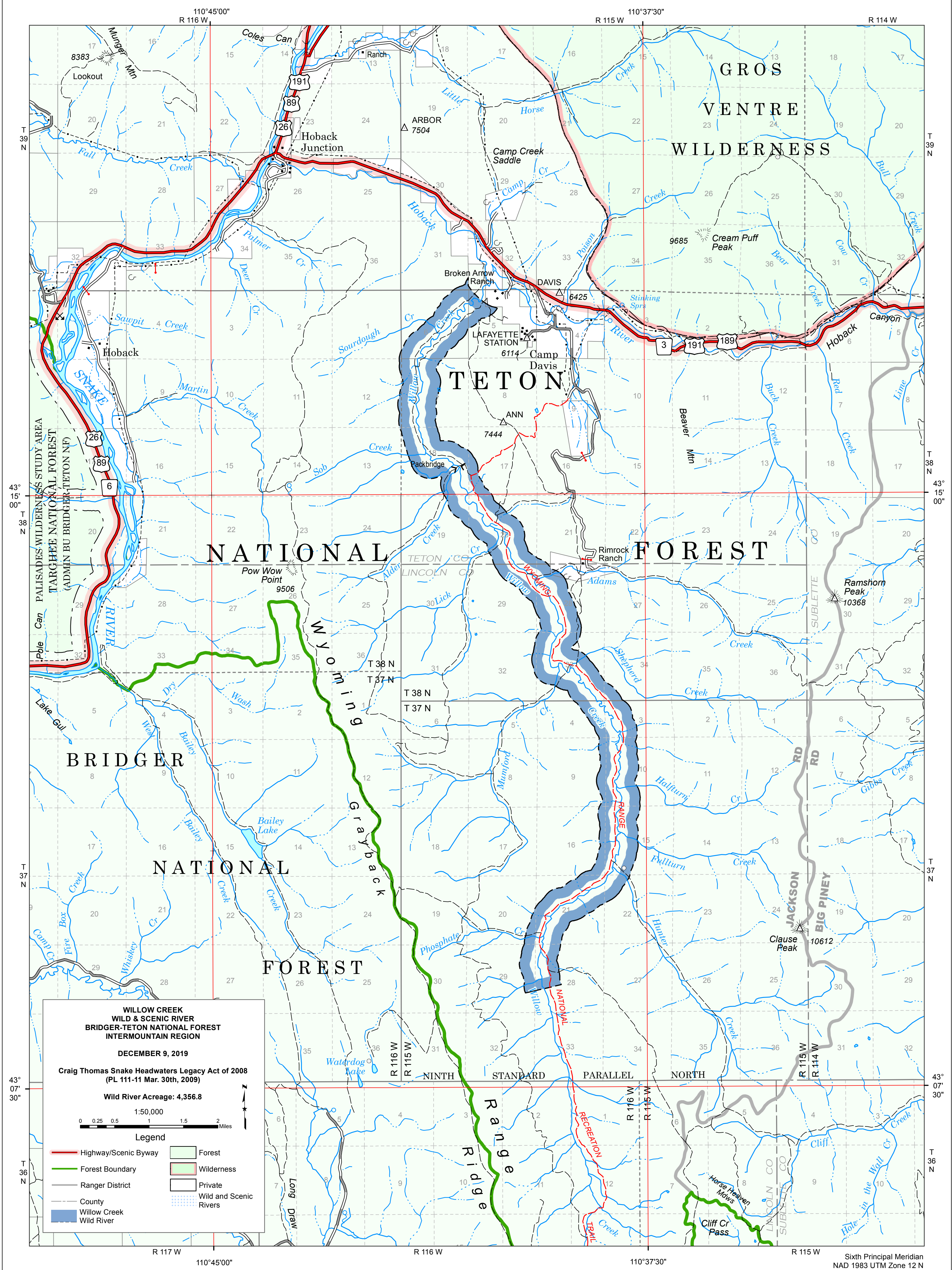
1:60,000

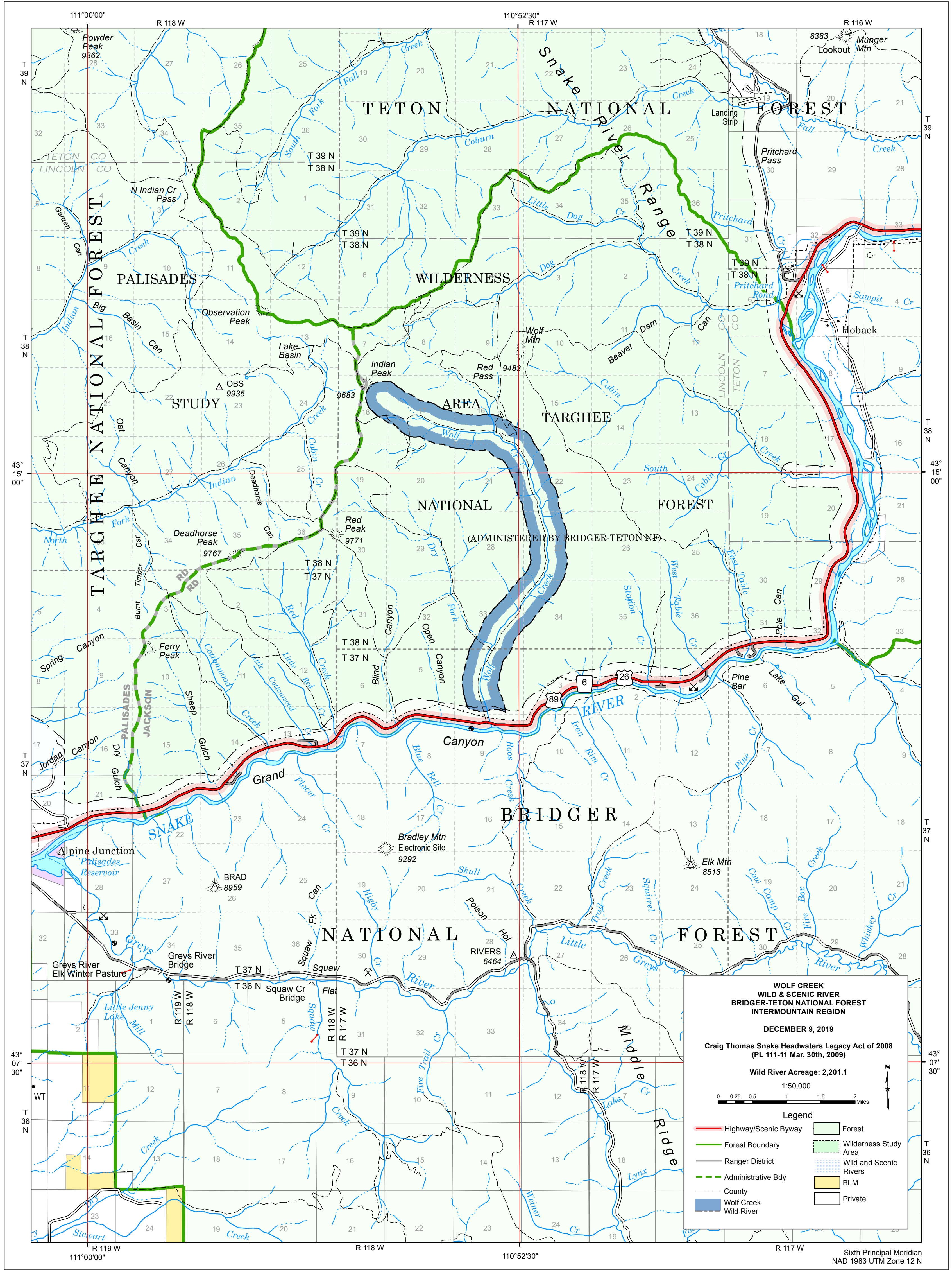
0 0.25 0.5 1 1.5 2 Miles

Legend

- Highway/Scenic Byway
- Forest Boundary
- Ranger District
- County
- Lower Snake River Recreation River
- Wild and Scenic Rivers
- Forest
- Wilderness
- Private







**WOLF CREEK
WILD & SCENIC RIVER
BRIDGER-TETON NATIONAL FOREST
INTERMOUNTAIN REGION**

DECEMBER 9, 2019

**Craig Thomas Snake Headwaters Legacy Act of 2008
(PL 111-11 Mar. 30th, 2009)**

Wild River Acreage: 2,201.1

1:50,000

Legend

Highway/Scenic Byway	Forest
Forest Boundary	Wilderness Study Area
Ranger District	Wild and Scenic Rivers
Administrative Bdy	BLM
County	Private
Wolf Creek Wild River	