

GROS VENTRE WILDERNESS







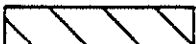

BRIDGER-TETON NATIONAL FOREST INTERMOUNTAIN REGION

April 26, 1988

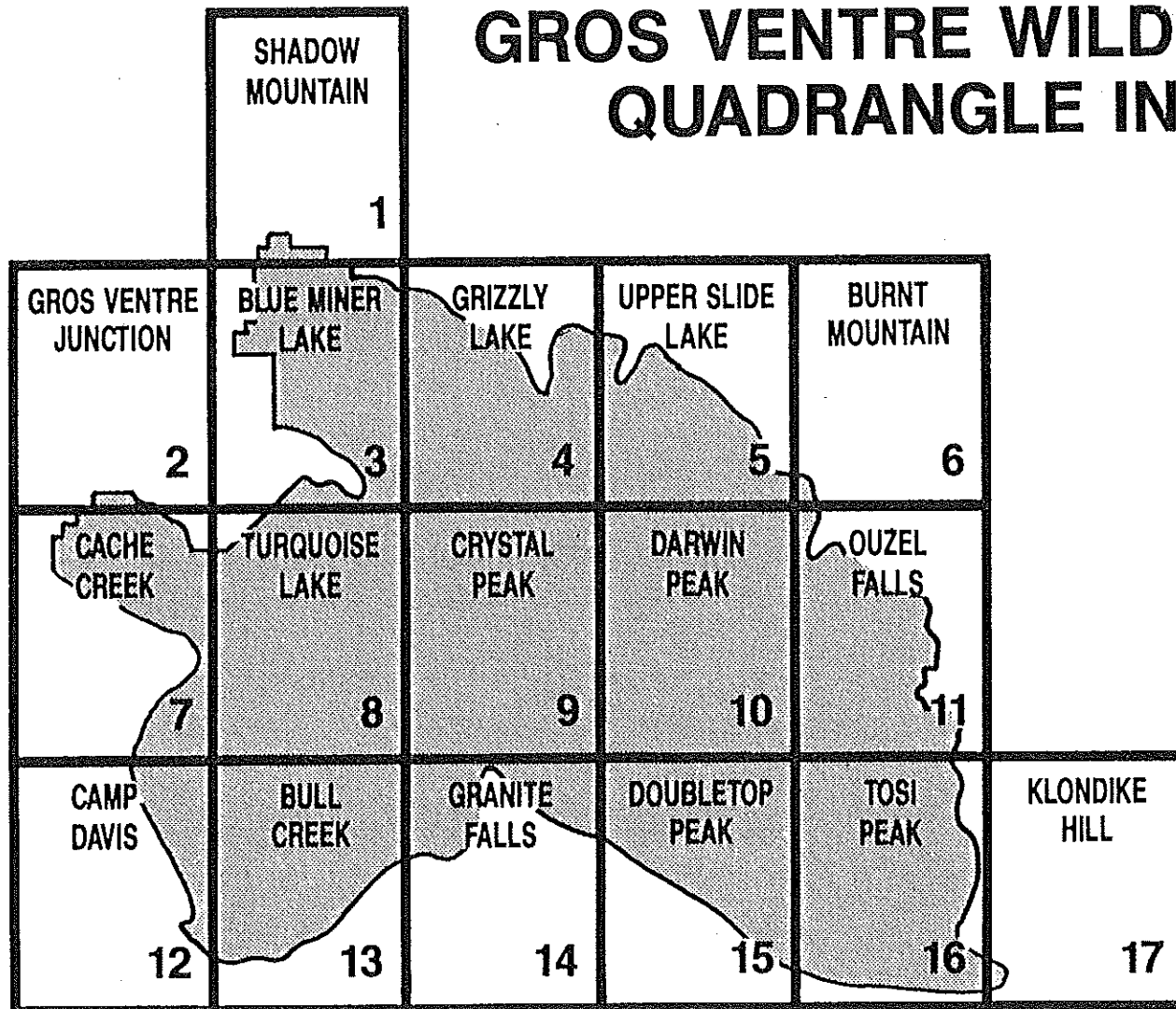
Wyoming Wilderness Act
of October 30, 1984
(PL 89-550)

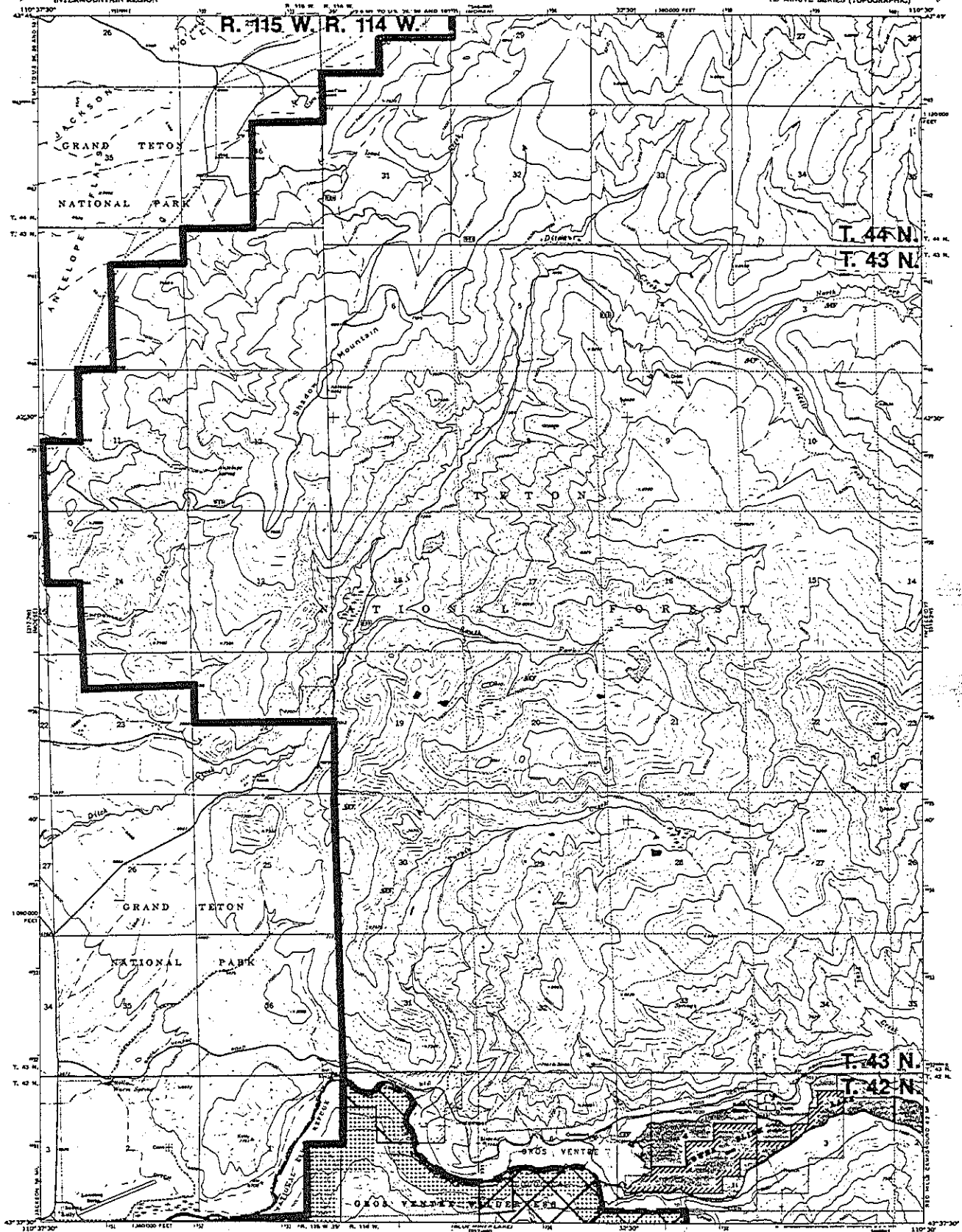


LEGEND

	Wilderness Boundary
	Forest Boundary
	State Line
	County Line
	Alienated Lands
	Valid Mining Claims
	Withdrawals (Reclamation, Military, Power, etc.)
	E.O. 10355 Withdrawals

GROS VENTRE WILDERNESS QUADRANGLE INDEX





Maped, edited, and published by the Geological Survey 1966

Control by JNRS and USGARS

Topography by photogrammetric methods from aerial photography taken 1967. First checked 1968

Horizontal projection, 1927 North American datum

10,000-foot grid based on Wyoming coordinate system, zone 12

1000-meter Universal Transverse Mercator grid ticks, zone 12, shown on blue

Published by U.S. Forest Service, Dismal, Utah, 1972

Revisions and minor changes from 1967 photography and 1971 field work

8th Precinct Map

This map compares with National Map Accuracy Standards

SCALE 1:24,000

CONTOUR INTERVAL, 40 FEET

DOTTED LINES REPRESENT SHADY CONTOURS

DATUM IS MEAN SEA LEVEL

ROAD CLASSIFICATION

Medium Duty Light Duty

Unimproved DWT

Unimproved, Bureau of Land Management protection

Unimproved, location remote

Unimproved, location approximate

Unimproved, location remote

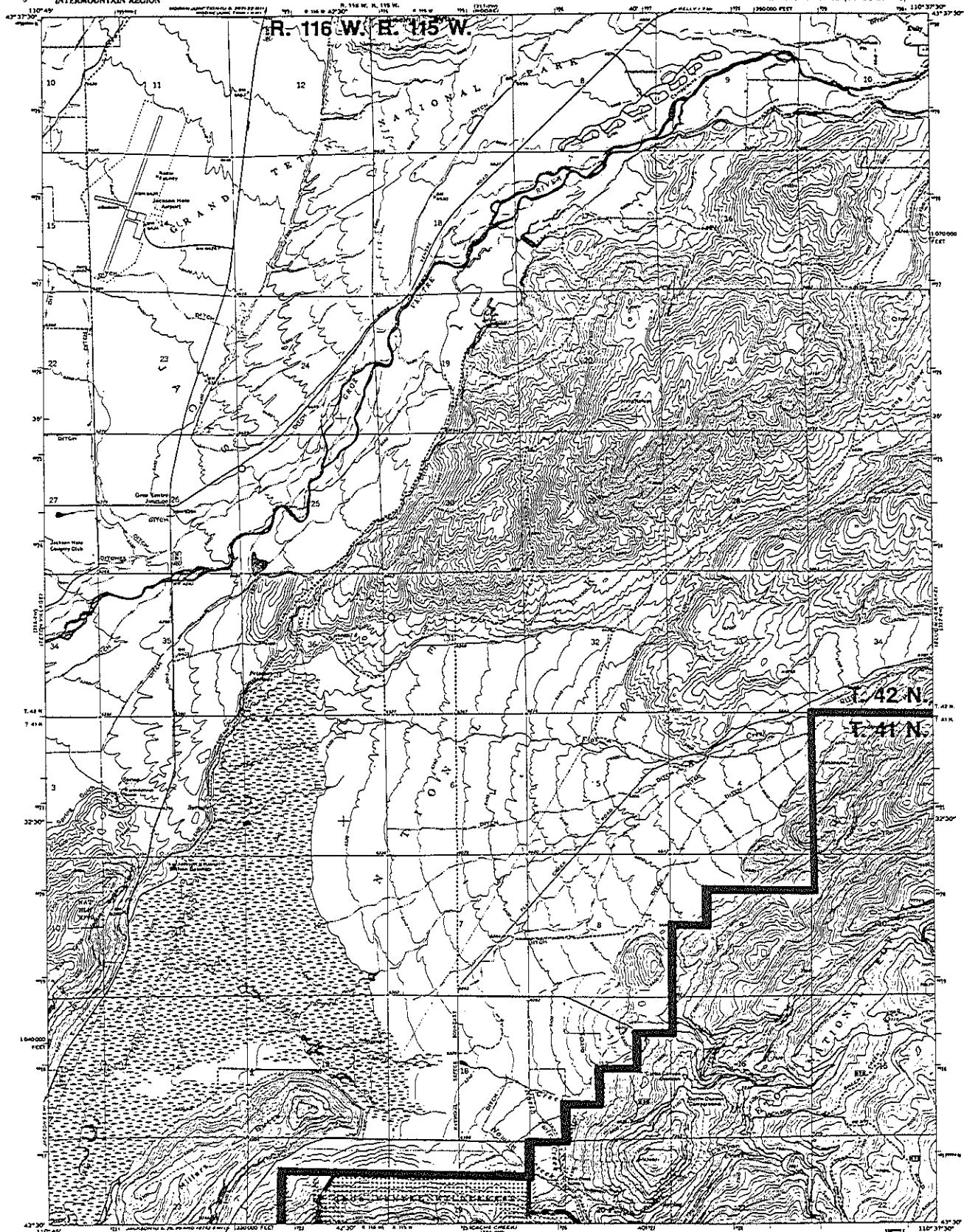
Unimproved, location approximate

Unimproved, location remote

Unimproved, location approximate

Unimproved, location remote

SHADOW MOUNTAIN
TETON NATIONAL FOREST
GROS VENTRE RANGER DISTRICT
(GRAND TETON & NC)
SHEET 317-11W
1972



Maped, edited, and published by the Geological Survey 1958

Control by USGS and USCGS

Topography by photogrammetric methods from aerial photographs taken 1957. First checked 1958

Permanent projection, 1972 North American datum, 10,000-foot grid based on Wyoming coordinate system, was done 1000-meter Universal Transverse Mercator grid and ticks, zone 12, shown in blue

Adjusted by U.S. Forest Service, Ocean, Utah, 1972

Adjusted and minor changes from 1957 photography and 1972 field work

SAI Printed Sheet

This map contains user National Map Accuracy Standards

SCALE 1:24,000

CONTOUR INTERVAL 20 FEET

BASED ON MEAN SEA LEVEL

ROAD CLASSIFICATION

Heavy Duty Medium Duty

Light Duty Unimproved Ditch

Trail

TOWNSHIP AND SECTION LINE CLASSIFICATION

Surveyed, location reliable

Surveyed, location approximate

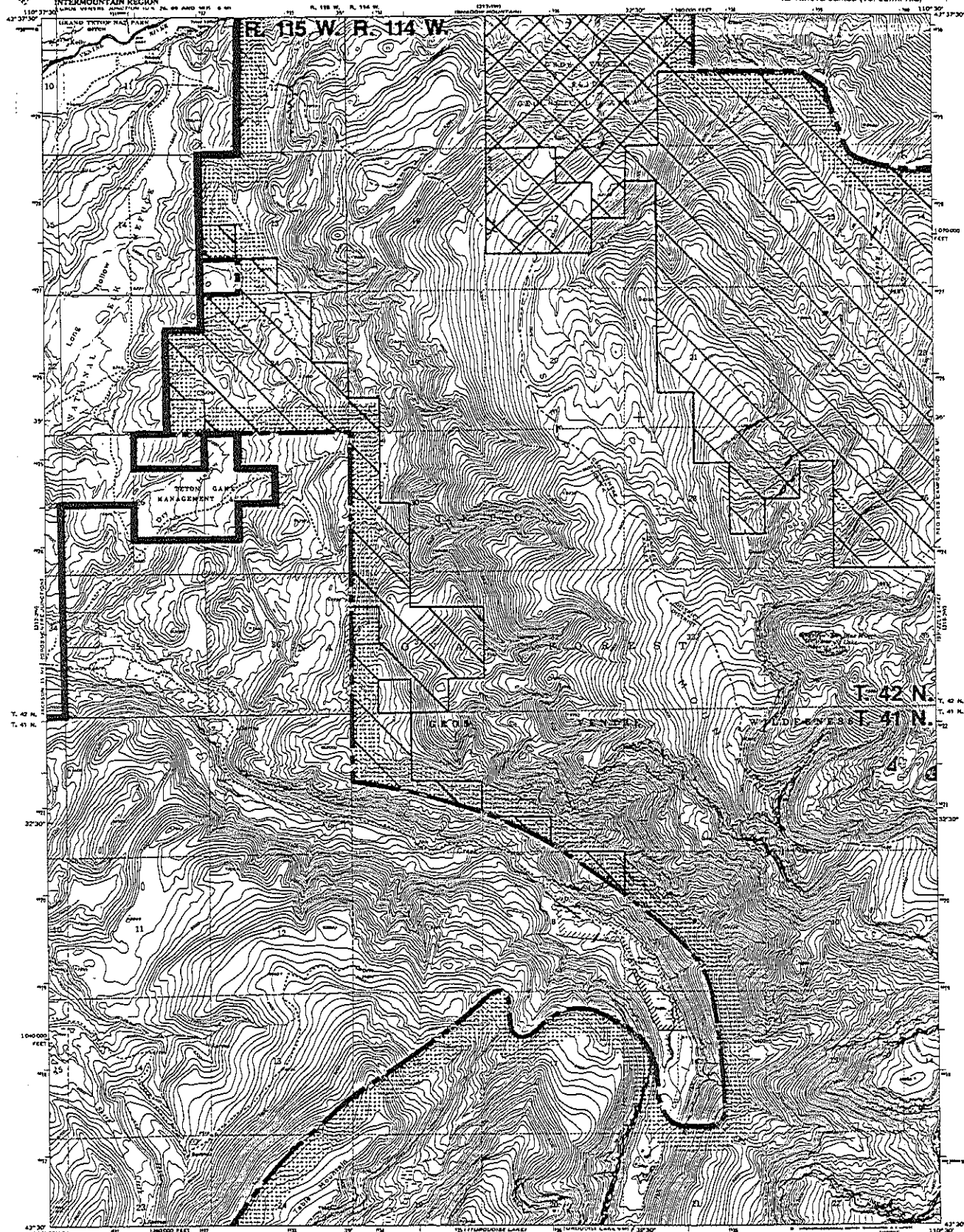
Unsurveyed, Bureau of Land Management protection



NORTH

QUADRANGLE LOCATION

GROS VENTRE JUNCTION
TETON NATIONAL FOREST
JACKSON RANGER DISTRICT
(GRAND TETON & SW)
1972
317-3W



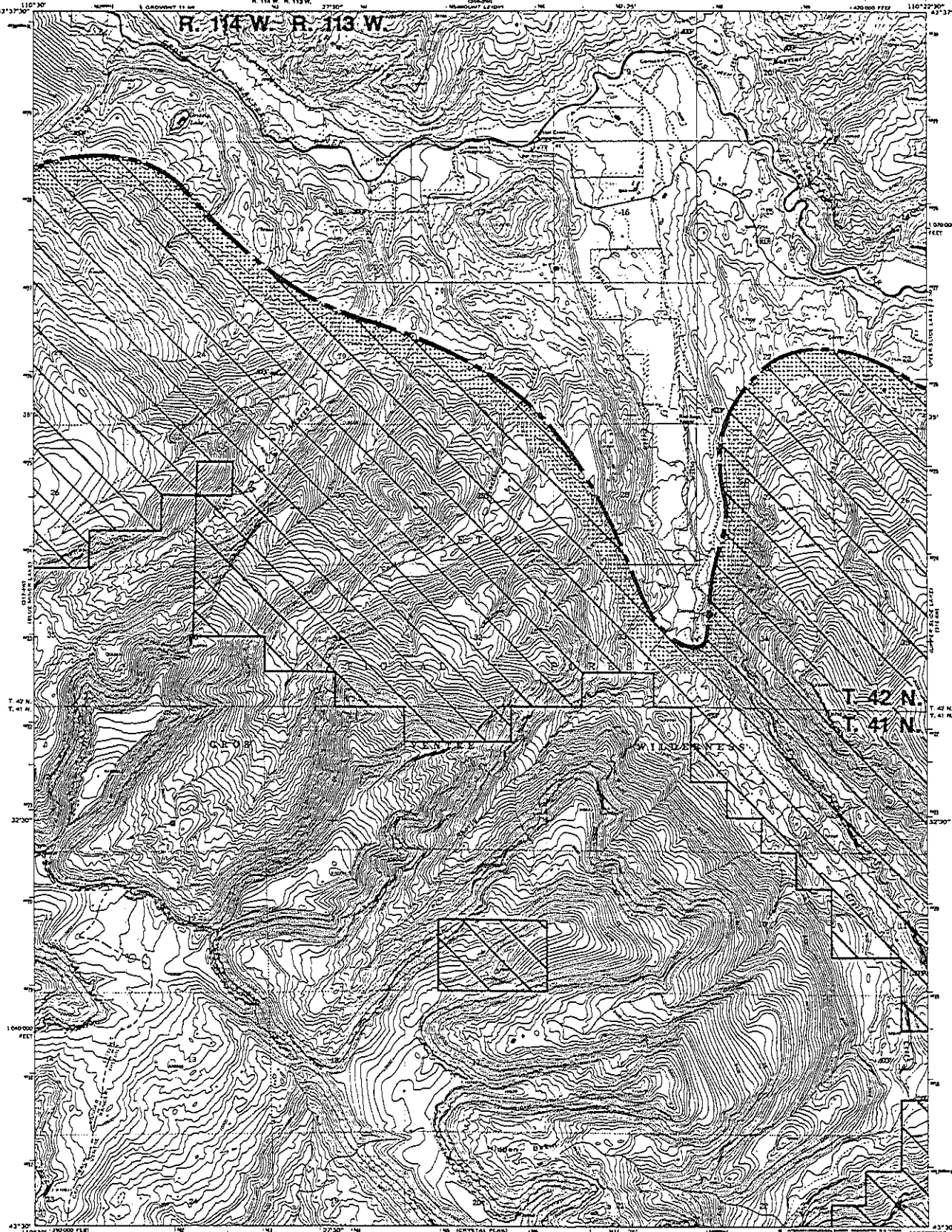
MADE, edited, and published by the Geological Survey 1908
Control by USGS and USGAS
Topography by aneroid, barometric methods from aerial
photographs taken 1907. First checked 1908
Polyconic projection. 1927 North American datum
1:250,000 scale and based on Wyoming coordinate system,
zone 12, 1908
1:250,000 scale Universal Transverse Mercator grid scale,
zone 12, 1908
Published by U.S. Forest Service, Denver, Utah, 1972
Revised and corrected from 1907 photograph
and 1972 data
4th Edition
This map contains only features that are shown



SCALE 1:24,000
CONTOUR INTERVAL 40 FEET
DATUM IS MEAN SEA LEVEL
ROAD CLASSIFICATION
UNIMPROVED DUTY
TOWNSHIP AND SECTION LINE CLASSIFICATION
Surveyed, location reliable
Surveyed, location approximate
Unsurveyed, Bureau of Land
Management protection

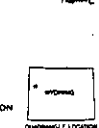


BLUE MINER LAKE
TETON NATIONAL FOREST
HOBACK AND SPOON RIVER
RANGER DISTRICTS
JORDAN TETON & SPOON
1972
317-4W

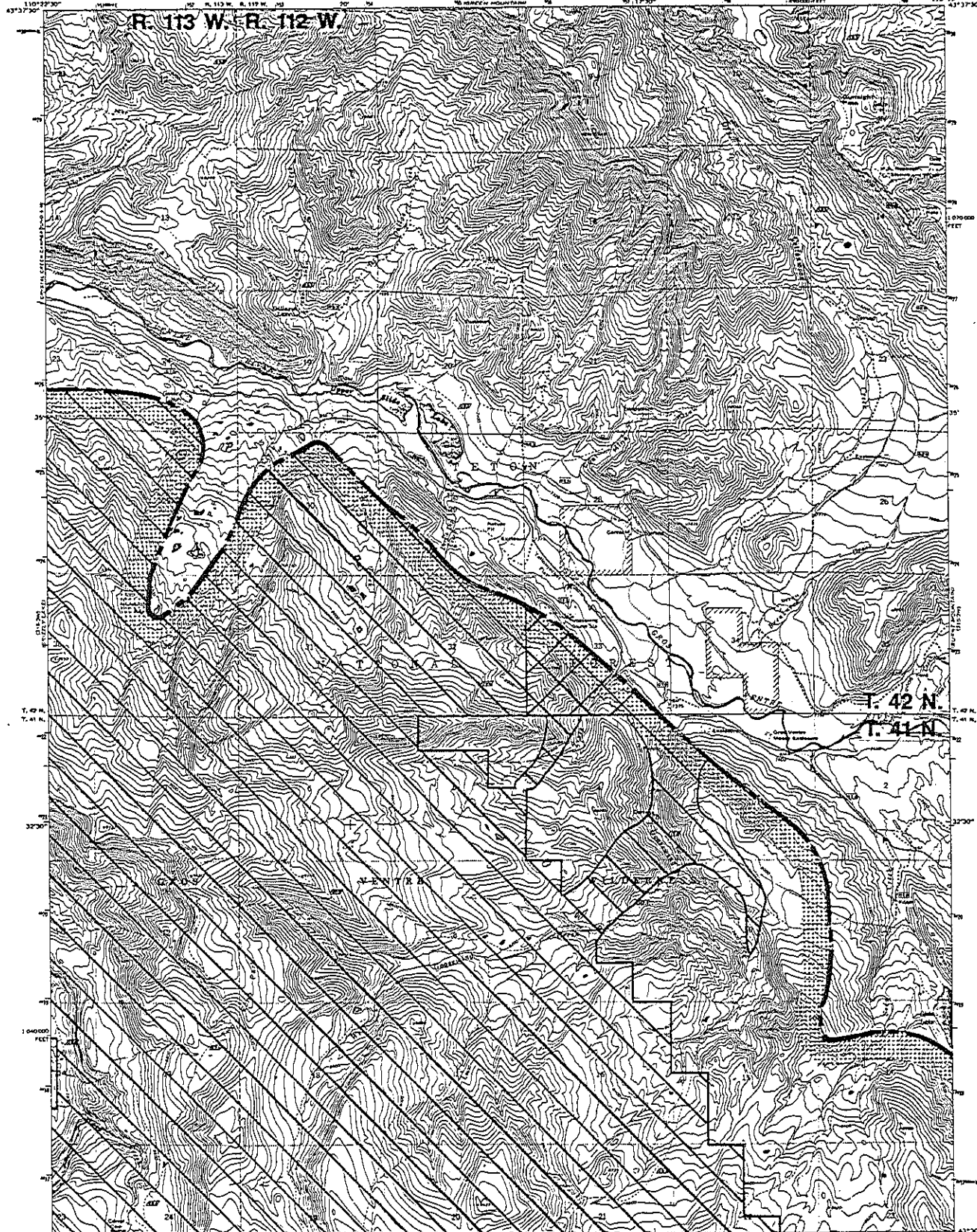


Mapped, edited, and published by the Geological Survey 1966
Control by USGS and USG&GS
Topography by photogrammetric methods from aerial
photographs taken 1964. Field checked 1965
Projection: Universal Transverse Mercator datum
10,000-foot grid based on Wyoming coordinate system,
zone 12, shown in blue
Responsible: U.S. Forest Service, Teton Unit, 1971
Approved and edited: Bureau of Land
Management, 1971
Bibliography: None
This map conforms with National Map Accuracy Standards

SCALE 1:24,000
CONTOUR INTERVAL 40 FEET
DOTTED LINES INDICATE 20-FOOT CONTOURS
DATUM IS MEAN SEA LEVEL
ROAD CLASSIFICATION
Light Duty _____ Unimproved Dirt _____
TOWNSHIP AND SECTION LINE CLASSIFICATION
Surveyed, location reliable _____
Unsurveyed, Bureau of Land
Management protection _____



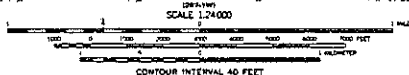
GRIZZLY LAKE
TETON NATIONAL FOREST
HOBACK AND GROS VENTRE
RANGER DISTRICTS
(MOUNT LEODY SW)
NAME 10-4821-1-1
1971
316-3W



Maped, edited, and published by the Geological Survey 1960
Control by USGS and USCAOS

Topography by photogrammetric methods from aerial photographs taken 1954. Field checked 1965
Positional information. 1927 North American datum
10,000-foot grid based on Wyoming coordinate system,
west zone
1927 datum (Universal Transverse Mercator grid zone
12, shown in blue
Recomputed by U.S. Forest Service, Denver, Utah, 1971.
Elevation and contour lines from 1967 photogrammetry
and 1970 field work.
See Physical Features.

This map conforms with National Map Accuracy Standards.



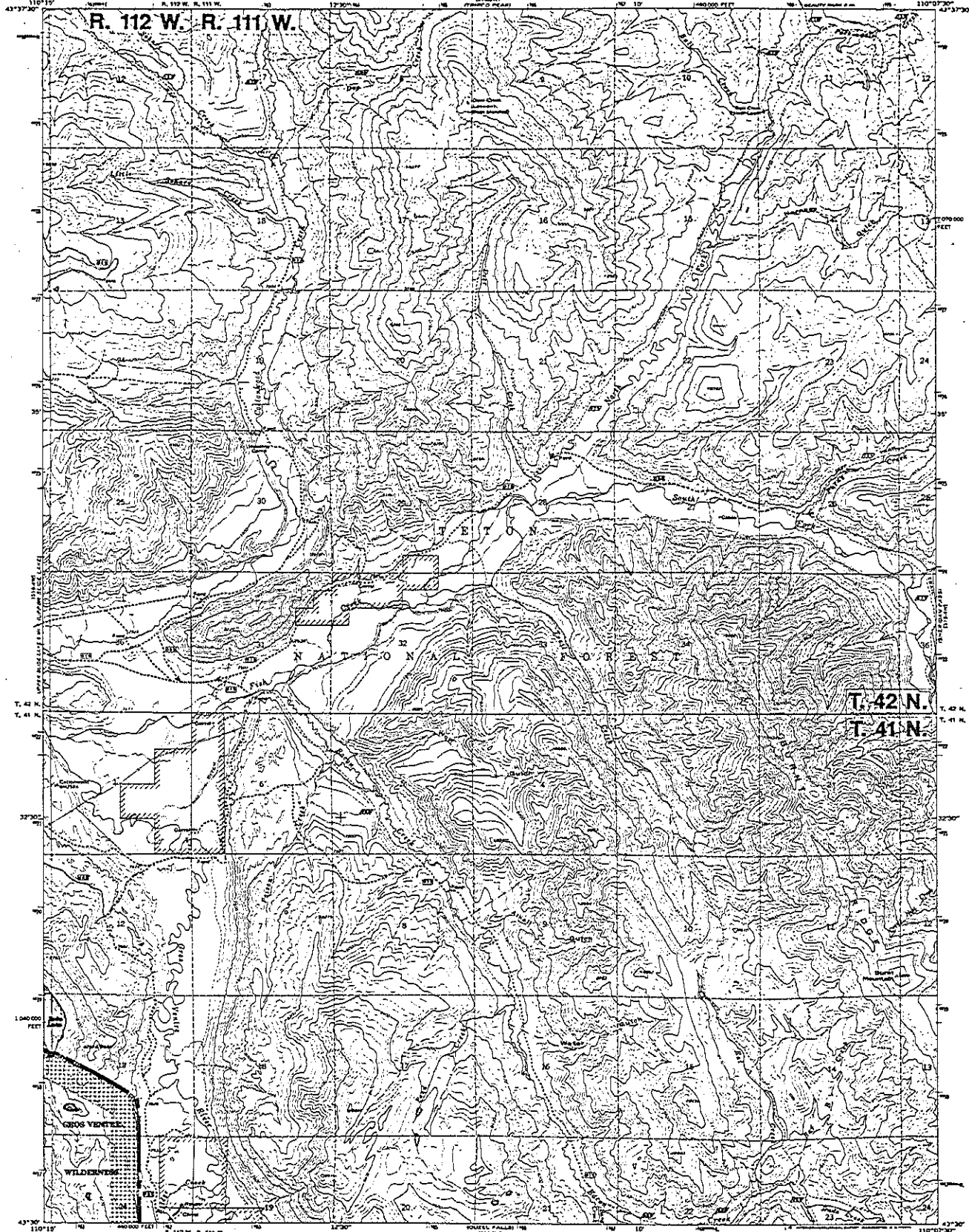
ROAD CLASSIFICATION
Light Duty _____ Unimproved Dwt _____
TOPOGRAPHY AND SECTION LINE CLASSIFICATION
_____, location reliable
_____, location approximate
_____, Bureau of Land
Management protection



UPPER SLIDE LAKE
TETON NATIONAL FOREST
GROS VENTRE RANGER DISTRICT
(MOUNT LEMMY ME)
MADE - MINNESOTA
1971
3164-W

UNITED STATES
DEPARTMENT OF AGRICULTURE
FOREST SERVICE
INTERMOUNTAIN REGION

BURNT MOUNTAIN QUADRANGLE
WYOMING-TETON CO.
7.5 MINUTE SERIES (TOPOGRAPHIC)



Maplet, edited, and published by the Geological Survey 1966.
Compiled by USGS and USFWS.
Vegetation for photographic methods from aerial
photographs taken 1964. Forest outlined 1966.
Photographic methods 1977. Forest boundary shown
10,000-foot grid based on existing vegetation patterns,
with new
100-meter Universal Transverse Mercator grid lines,
June 12, 1977, shown at 1:50,000.
Reproduced by U.S. Forest Service, Ogden, Utah, 1971.
Aerial and other photos from 1967 photography
and 1970 field data.
6th Printing March 1971.
This map contains the National Map Accuracy Standards.

SCALE 1:24,000
CONTOUR INTERVAL 40 FEET
BOTTED LINES REPRESENT 20-FOOT CONTOURS
DATUM IS MEAN SEA LEVEL

ROAD CLASSIFICATION
Light Duty Unimproved DRI

TOWNSHIP AND SECTION LINE CLASSIFICATION
Surveyed, location reliable
Unsurveyed, Bureau of Land
Management protection

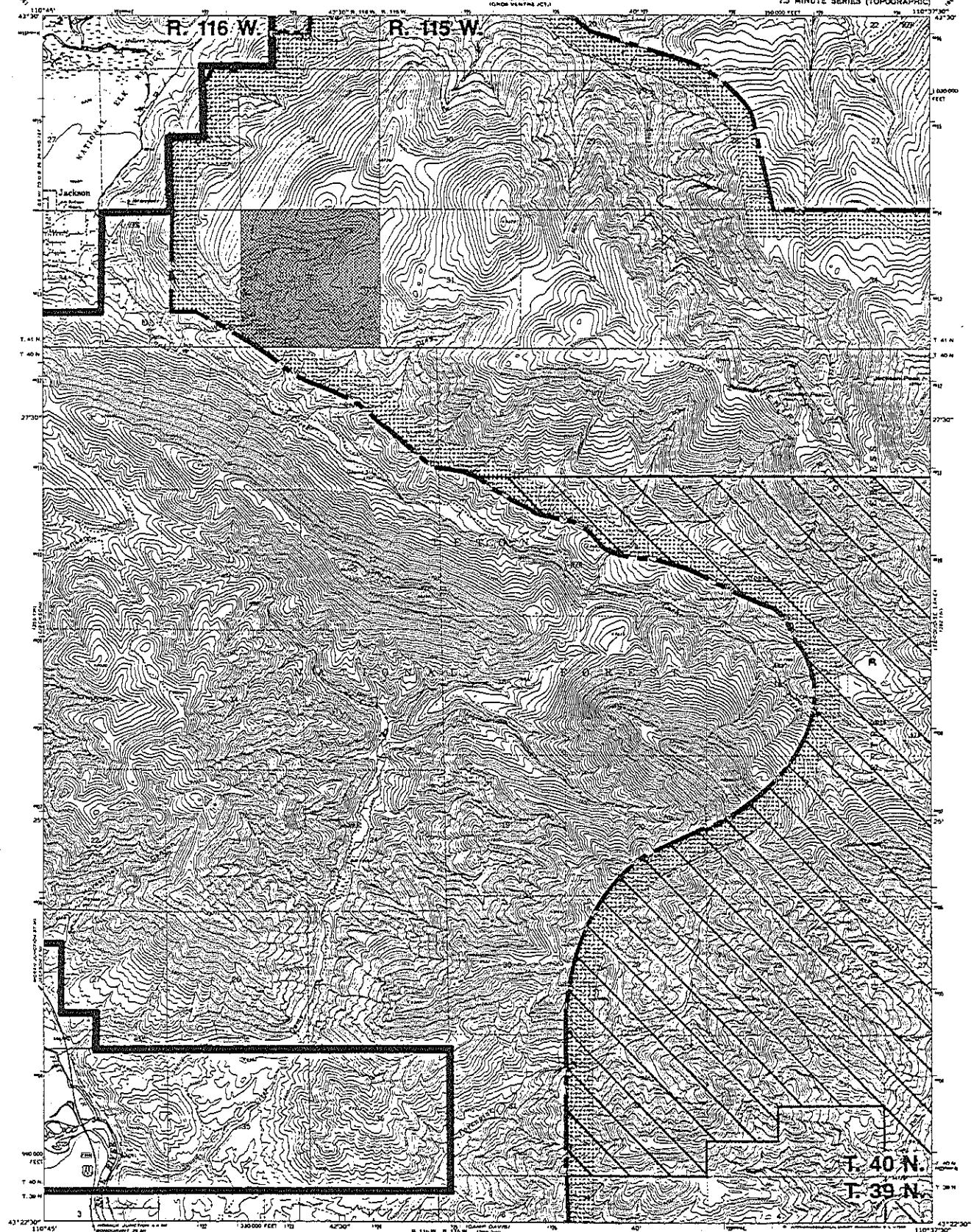
Orthophotograph prepared from 1:60,000 scale
aerial photographs taken August 6, 1975.

BURNT MOUNTAIN
TETON NATIONAL FOREST
GROS VENTRE WANGER DISTRICT
(LAVA MOUNTAIN RW)
1971
315-3W

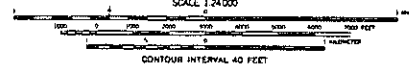
Burnt Mountain 6

UNITED STATES
DEPARTMENT OF AGRICULTURE
FOREST SERVICE
INTERMOUNTAIN REGION

CACHE CREEK QUADRANGLE
WYOMING-TETON CO.
7.5 MINUTE SERIES (TOPOGRAPHIC)



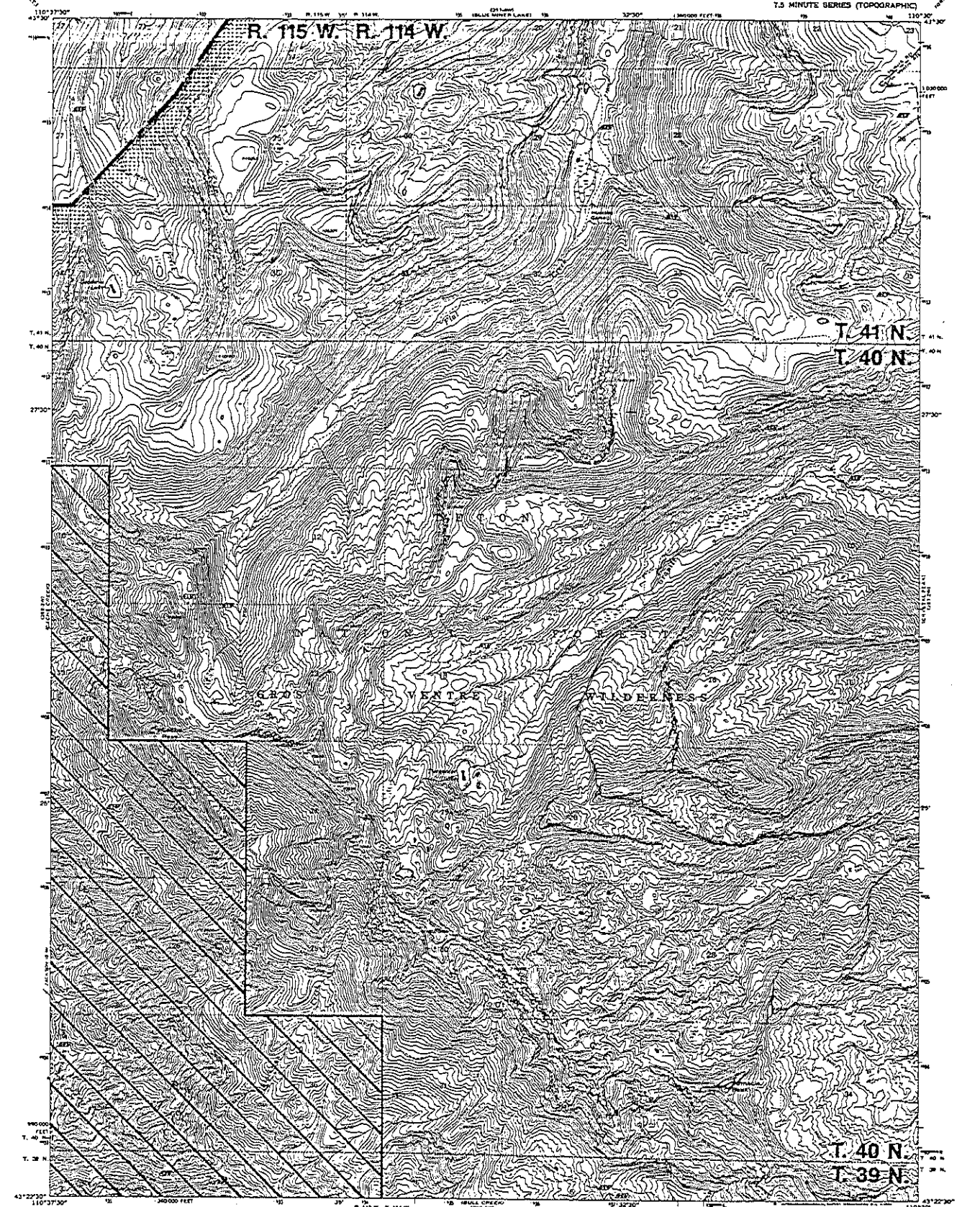
Maped, edited, and published by the Geological Survey 1966.
Derived by USGS and USGAS.
Topography by photogrammetric methods from aerial photographs taken 1964. Contour interval 100 feet.
Polyconic projection. 1927 North American datum.
10,000-foot grid based on Wyoming coordinate system, with zone.
1000-meter Universal Transverse Mercator grid zone, zone 12, within its limit.
Responsible to U.S. Forest Service. Open to 1971.
Aerials and other sources from 1967 (topography) and 1970 (contour).
8th Printing Revision.
This map complies with National Map Accuracy Standards.



ROAD CLASSIFICATION
Heavy Duty Medium Duty
Light Duty Unimproved Dirt
TOWNSHIP AND SECTION LINE CLASSIFICATION
..... Surveyed, location reliable
..... Surveyed, location approximate
..... Unsurveyed, Bureau of Land Management protection



CACHE CREEK
TETON NATIONAL FOREST
HOBACK RANGER DISTRICT
(JACKSON 1 NW)
MADE - WYOMING 7.5
1971
240-2W

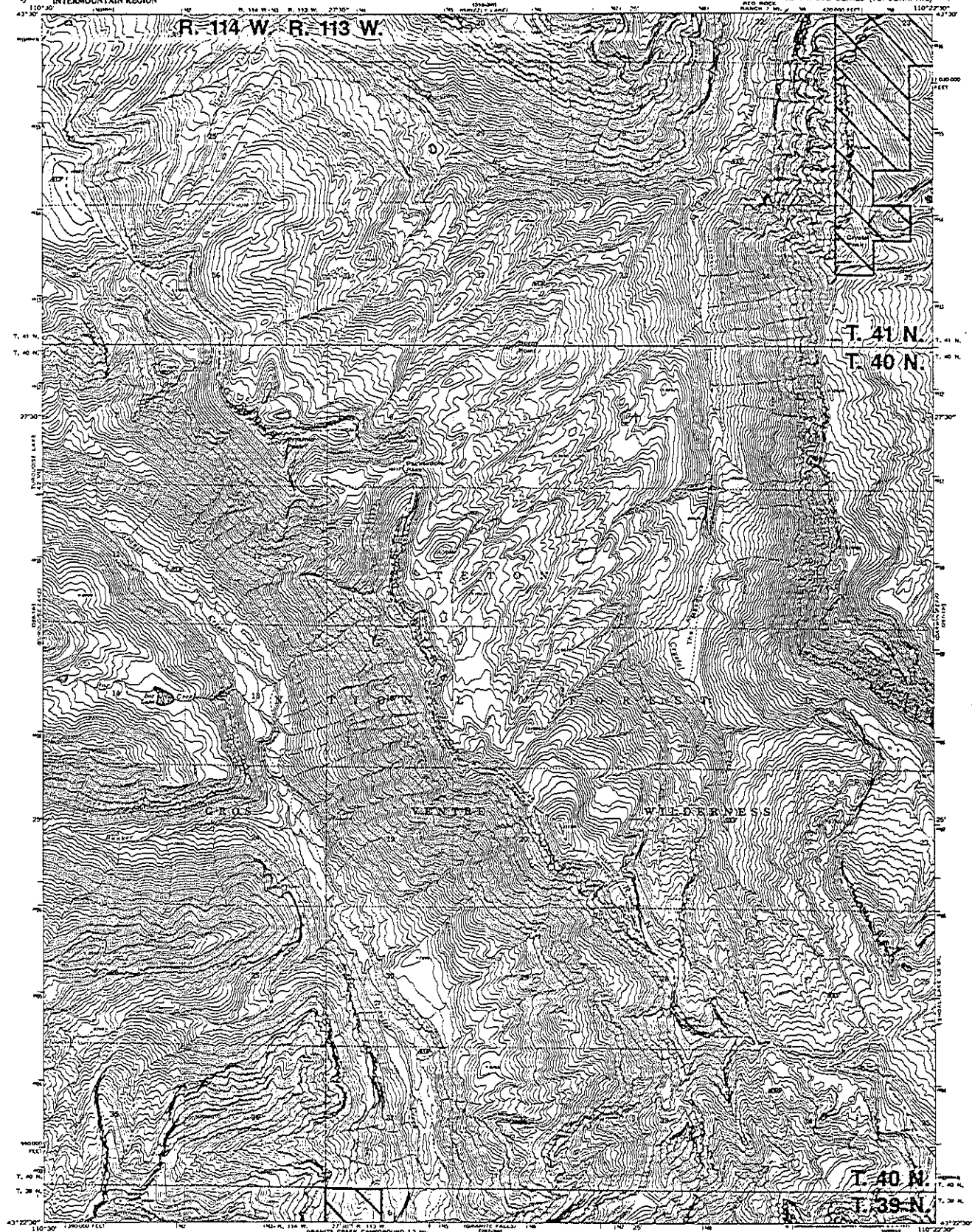


Mapped, edited, and published by the Geological Survey 1966.
Control by USGS and USGAS.
Topography by photogrammetric methods from aerial photographs taken 1964. Field checked 1965.
Photocopy projection. 1927 North American datum.
10,000-foot grid based on Wyoming coordinate system.
Used zone 1000-meter Universal Transverse Mercator grid and, zone 12, which is also
Referenced to U.S. Prime Meridian Datum, Utah, 1971
contour interval and other features from 1967 photograph
and 1970 field data.
See Principal Information
This map conforms with National Map Accuracy Standards

TURQUOISE LAKE
TETON NATIONAL FOREST
HOBACK AND GROSVENTRE
RANGER DISTRICTS
(JACKSON, T. ME.)
MADE BY CONTRACT 7-6
1971
288-1W

UNITED STATES
DEPARTMENT OF AGRICULTURE
FOREST SERVICE
INTERMOUNTAIN REGION

CRYSTAL PEAK QUADRANGLE
WYOMING-TETON CO.
7.5 MINUTE SERIES (TOPOGRAPHIC)



Map dated, revised, and published by the Geological Survey 1967

Control by USGS and VSCAGS

Topography by photogrammetric methods from aerial

photographs taken 1966. Field checked 1967

Projection projection, 1927 North American datum

10 000-foot grid based on Wyoming coordinate system,

1983 zone

1000-meter Universal Transverse Mercator grid ticks,

zone 12, shown in blue

Revised by U.S. Forest Service, Queen, Utah 1972;

additions and minor revisions from 1967 photographs

and 1971, same scale

6th Principal Meridian

This map conforms with National Map Accuracy Standards

SCALE 1:24,000

CONTOUR INTERVAL 40 FEET

DATUM IS MEAN SEA LEVEL

ROAD CLASSIFICATION

Trial

TOWNSHIP AND SECTION LINE CLASSIFICATION

Surveyed, location approximate

Unsurveyed, Survey of Land

Management projection

BOUNDARY LOCATION

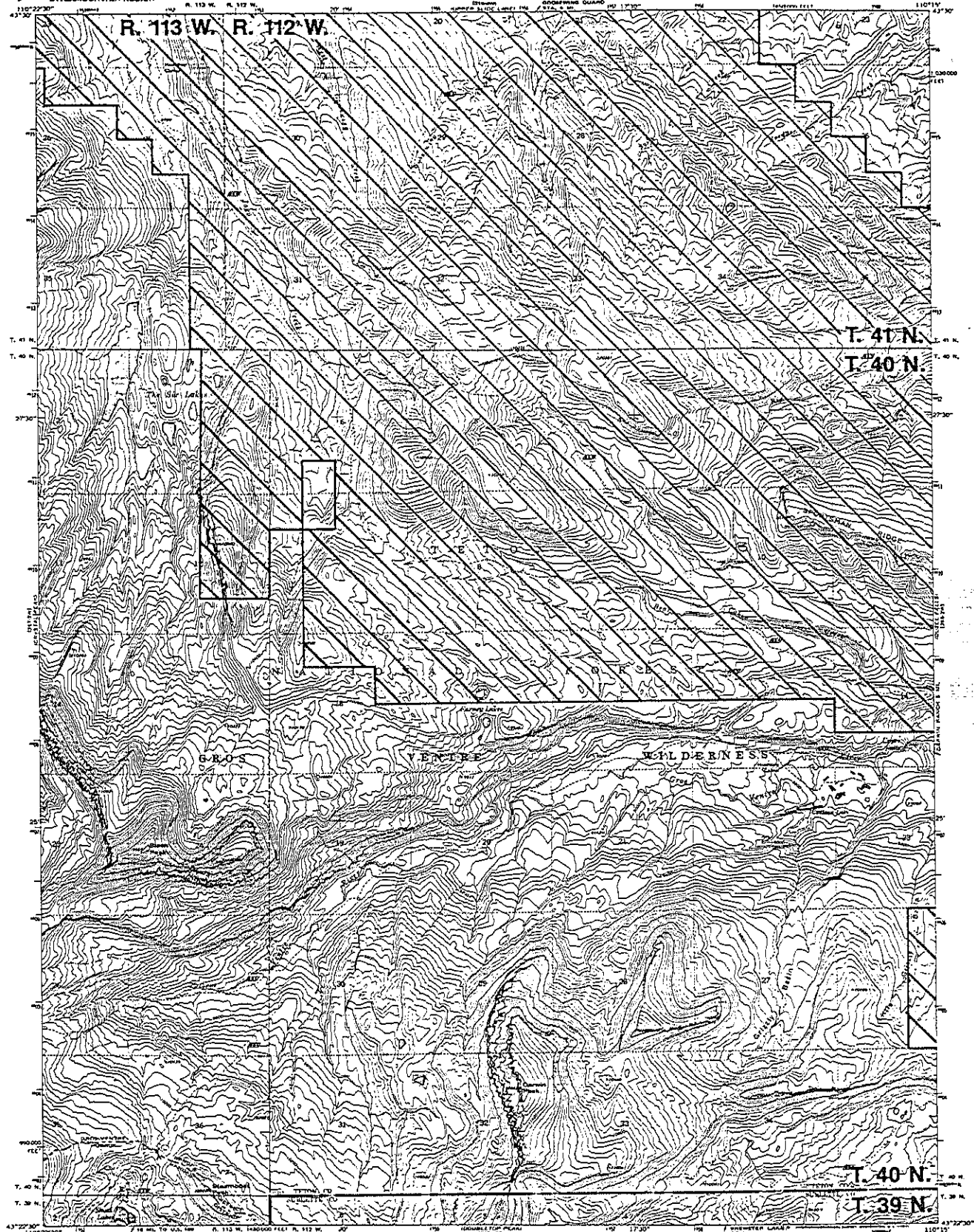
WYOMING

CRYSTAL PEAK

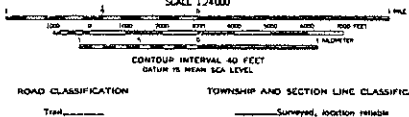
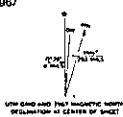
TETON NATIONAL FOREST

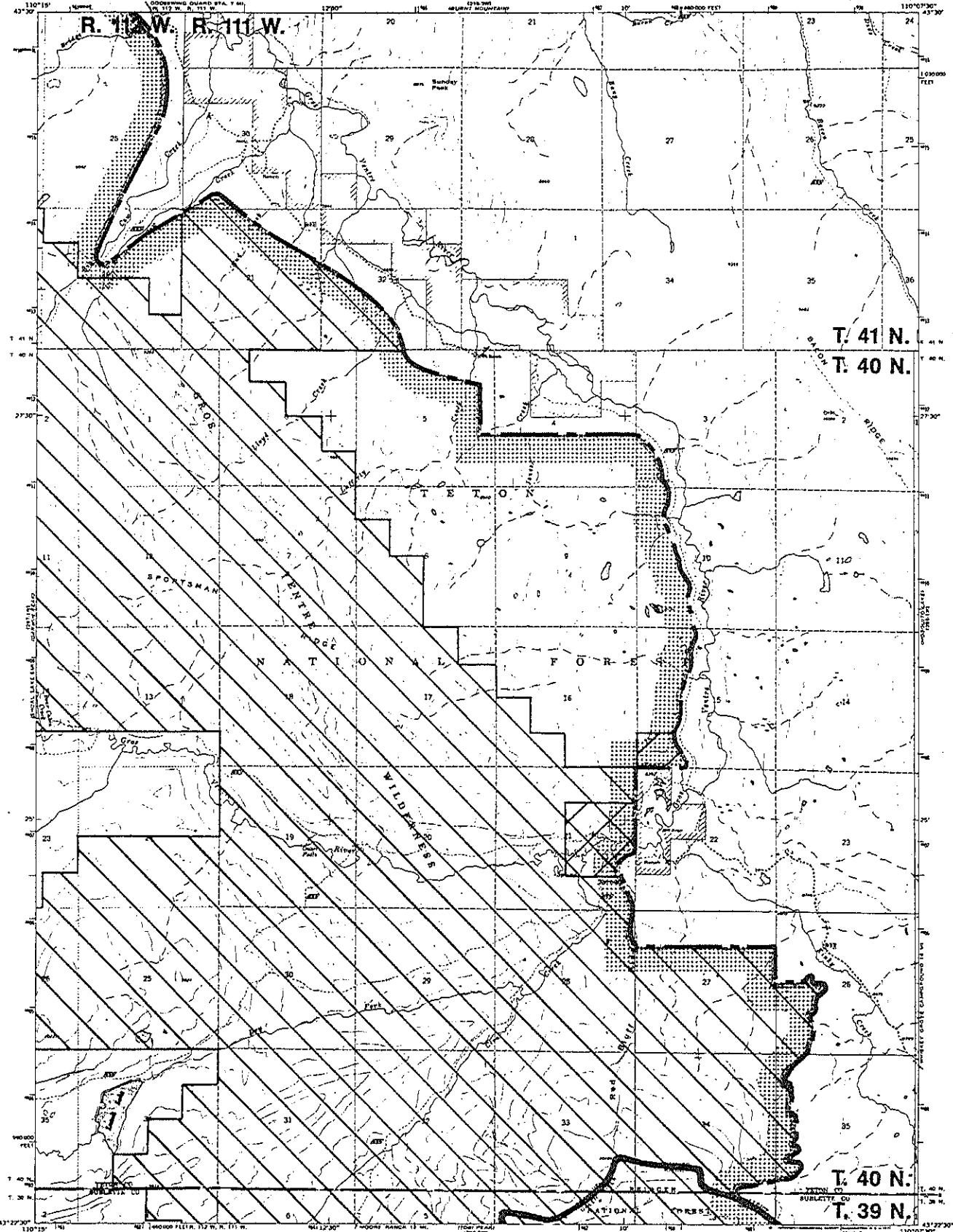
GROS VENTRE AND

Crystal Peak 9



Maped, edited, and published by the Geological Survey 1967
Control by USGS and US2448
Topographic by photogrammetric methods from aerial
photographs taken 1966. Field checked 1967
Positioning, elevation, 1627 North American datum
10,000-foot grid based on Wyoming coordinate system,
zone 12, shown as blue
1000-meter Universal Transverse Mercator grid lines,
zone 12, shown as blue
Published by U.S. Forest Service, Ogden, Utah, 1972.
Approved and dated November 1967 (topographic)
and 1972 (road map)
8th Print Run
This map complies with National Map Accuracy Standards





Map prepared, edited, and published by the Geological Survey 1967

Control by USGS and USCAOS

Topography by photogrammetric methods from aerial photographs taken 1956. Field checked 1967

Photographic projection, 1927 North American datum

30,000-foot grid based on Wyoming coordinate system, west zone

1000-foot Universal Transverse Mercator grid lines, zone 12, shown in blue

Revised by U.S. Forest Service, Ogden, Utah, 1972

Airphoto and maps revised from 1967 photography and 1971 field data

See Principal Meridian

This map complies with National Map Accuracy Standards

SCALE 1:24,000

CONTOUR INTERVAL 40 FEET

DATUM IS MEAN SEA LEVEL

ROAD CLASSIFICATION

Unimproved D.R.

Unimproved D.R.

Unimproved D.R.

Unimproved D.R.

Unimproved D.R.

Unimproved D.R.

TOWNSHIP AND SECTION LINE CLASSIFICATION

Surveyed, location reliable

Surveyed, location approximate

Unsurveyed, Bureau of Land Management protection

Unsurveyed, Bureau of Land Management protection

Unsurveyed, Bureau of Land Management protection

OUZEL FALLS

TETON AND BRIDGER NATIONAL FORESTS

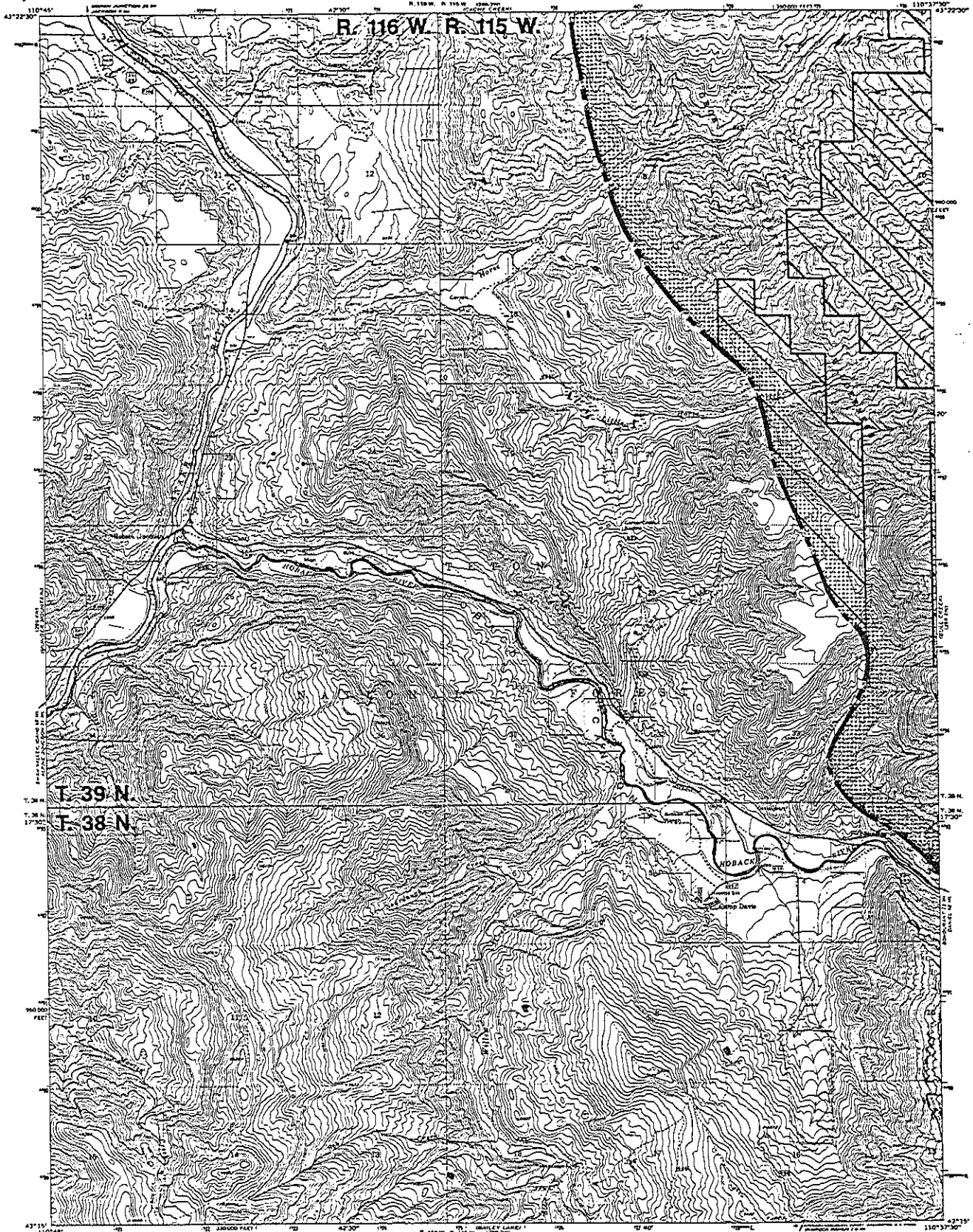
GROS VENTRE AND GREEN RIVER

RANGER DISTRICTS

(TOWN PLAN NW)

1972

286-2W



Map produced, edited, and published by the Geological Survey 1966

Control by USGS and USGAS

Topography by photogrammetric methods from aerial photographs taken 1964. First checked 1965

Horizontal projection, 1927 North American datum

10,000-foot grid based on Wyoming coordinate system, west zone

1000-meter Universal Transverse Mercator grid ticks, June 12, 1966

Revised by U.S. Forest Service, Ogden, Utah, 1971

Revisions and other changes from 1967 photography and 1970 field data

See Producer's Manual

This map complies with National Map Accuracy Standards

SCALE 1:24,000

CONTOUR INTERVAL 40 FEET

DATUM N. AM. 1927

ROAD CLASSIFICATION

Heavy Duty Medium Duty

Light Duty Unimproved Df

TOWNSHIP AND SECTION LINE CLASSIFICATION

Surveyed, location reliable

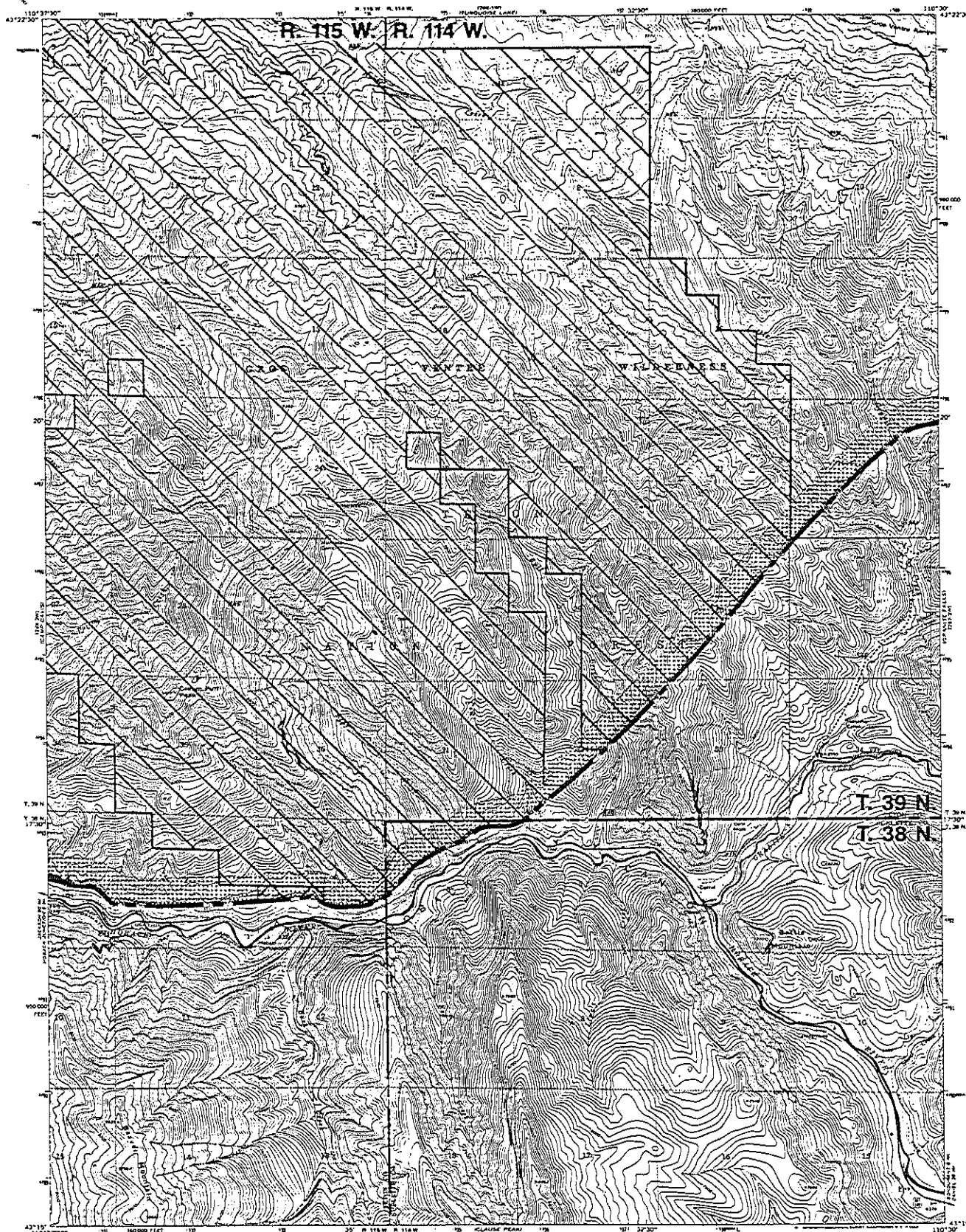
Surveyed, location approximate

Unsurveyed, Bureau of Land Management projection



CAMP DAVIS
TETON NATIONAL FOREST
HOBACK RANGER DISTRICT
(JACKSON 1 600)
1971
249-3W

Camp Davis 12



Maped, edited, and published by the Geological Survey 1965

Control by USGS and USCAGS

Topography by stereoscopic methods from aerial photographs taken 1964. First checked 1966.

Photocopy projection. 1927 North American datum. 10,000-foot grid based on Wyoming coordinate system, west zone.

1000-meter Universal Transverse Mercator grid ticks, zone 12 shown in blue.

Revised by U.S. Forest Service, August 1971. Additional post-war information from 1964 interpretation and 1970 field data.

with permission.

This map complies with National Map Accuracy Standards.



CONTOUR INTERVAL 40 FEET
DATUM IS MEAN SEA LEVEL

ROAD CLASSIFICATION
Light Duty _____ Medium Duty _____
Unimproved Dirt _____

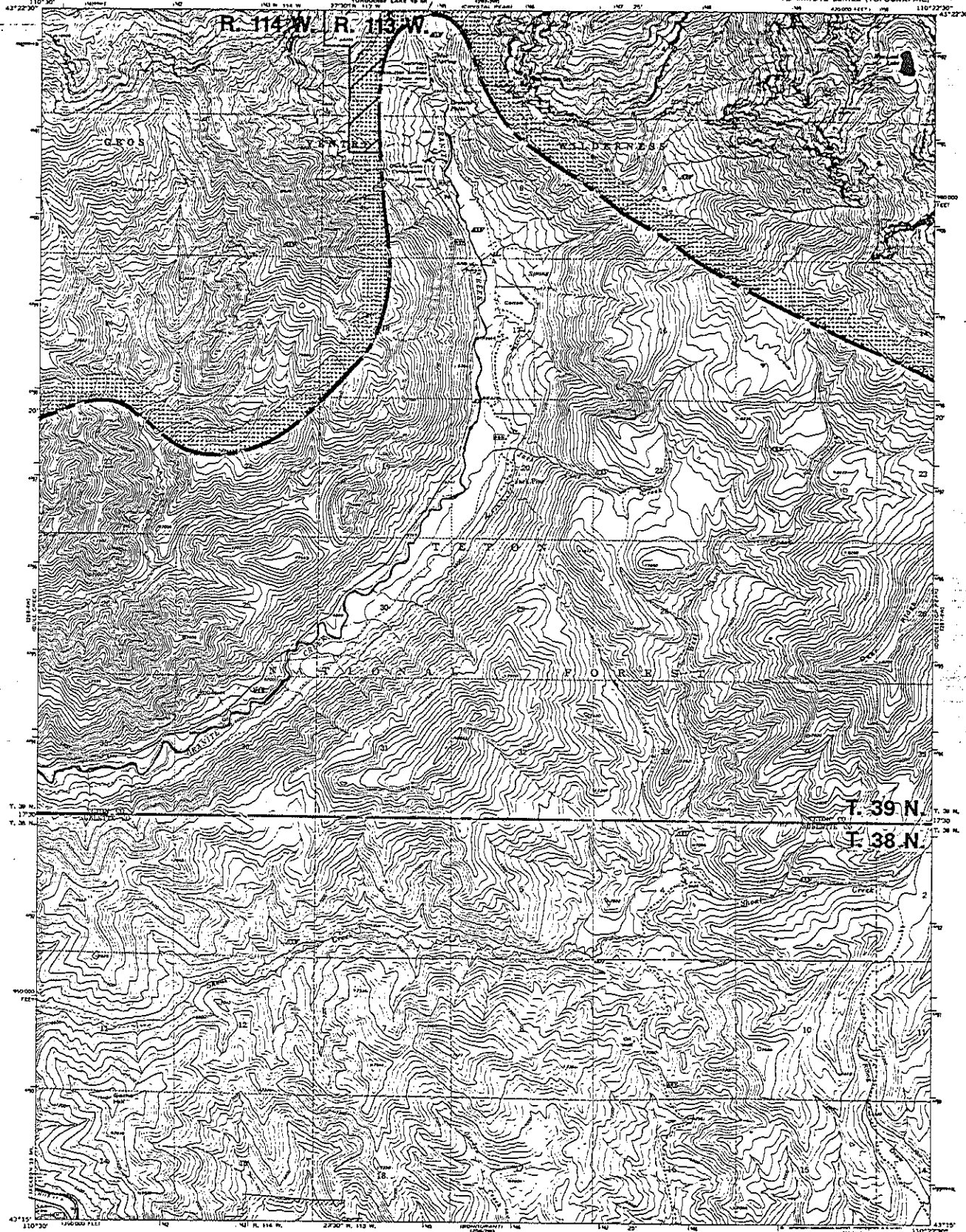
TOWNSHIP AND SECTION LINE CLASSIFICATION
Surveyed, location reliable _____
Unsurveyed, Bureau of Land Management protection _____



WELLHEAD LOCATION

BULL CREEK
TETON NATIONAL FOREST
HORACK RANGER DISTRICT
[JACKSON T. 38]
1971
255-4W

Bull Creek 13



Maped, edited, and published by the Geological Survey 1967

Control by USGS and USCGS

Topographic by photogrammetric methods from aerial photographs taken 1960. Field checked 1967

Projection: projection 1927 North American datum

10,000-foot grid based on mapping coordinate system, zone 12, shown as true

1000-meter Universal Transverse Mercator grid ticks, zone 12, shown as true

Reprojection to U.S. Forest Service datum, 1912

Horizontal and vertical datum from 1967 photogrammetry and 1971 field data

8th Edition Manual

This map conforms with National Map Accuracy Standards.

SCALE 1:24,000

CONTOUR INTERVAL 40 FEET

DATUM IS MEAN SEA LEVEL

ROAD CLASSIFICATION

Heavy Duty Light Duty

Unimproved Duty

TOWNSHIP AND SECTION LINE CLASSIFICATION

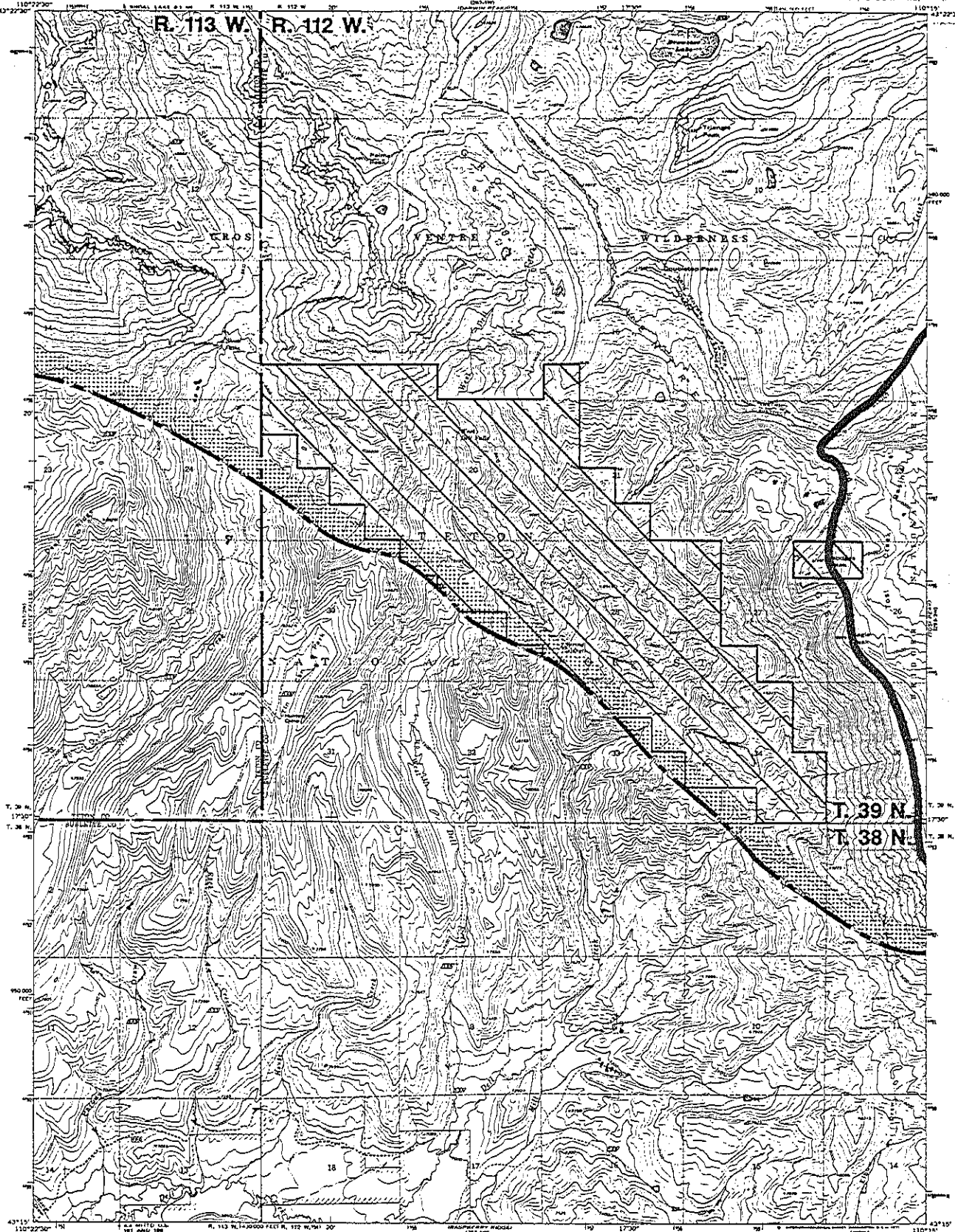
Surveyed, location reliable

Surveyed, location approximate

Unsurveyed, Bureau of Land Management protection



GRANITE FALLS
TETON NATIONAL FOREST
HOBACK RANGER DISTRICT
(JONES VENTRE SW)
1972
287-3W



Map made, edited, and published by the Geological Survey 1967

Control by USGS and USGAS

Topography by photogrammetric methods from aerial photographs taken 1966. First checked 1967

Photocopy projection. 1927 North American datum.

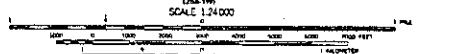
10,000-foot grid based on Wyoming coordinate system, west zone

100-meter Universal Transverse Mercator grid lines, zone 12, shown in blue

Revised for U.S. Forest Service, Green River, 1972. Additions and minor revisions from 1967 photography and 1971 field work

6th Federal Meridian

This map conforms with National Map Accuracy Standards



CONTOUR INTERVAL 40 FEET
DATUM IS MEAN SEA LEVEL

ROAD CLASSIFICATION

Unimproved Dirt

TOWNSHIP AND SECTION LINE CLASSIFICATION

Surveyed, location reliable

Surveyed, location approximate

Unsurveyed, Bureau of Land Management protection

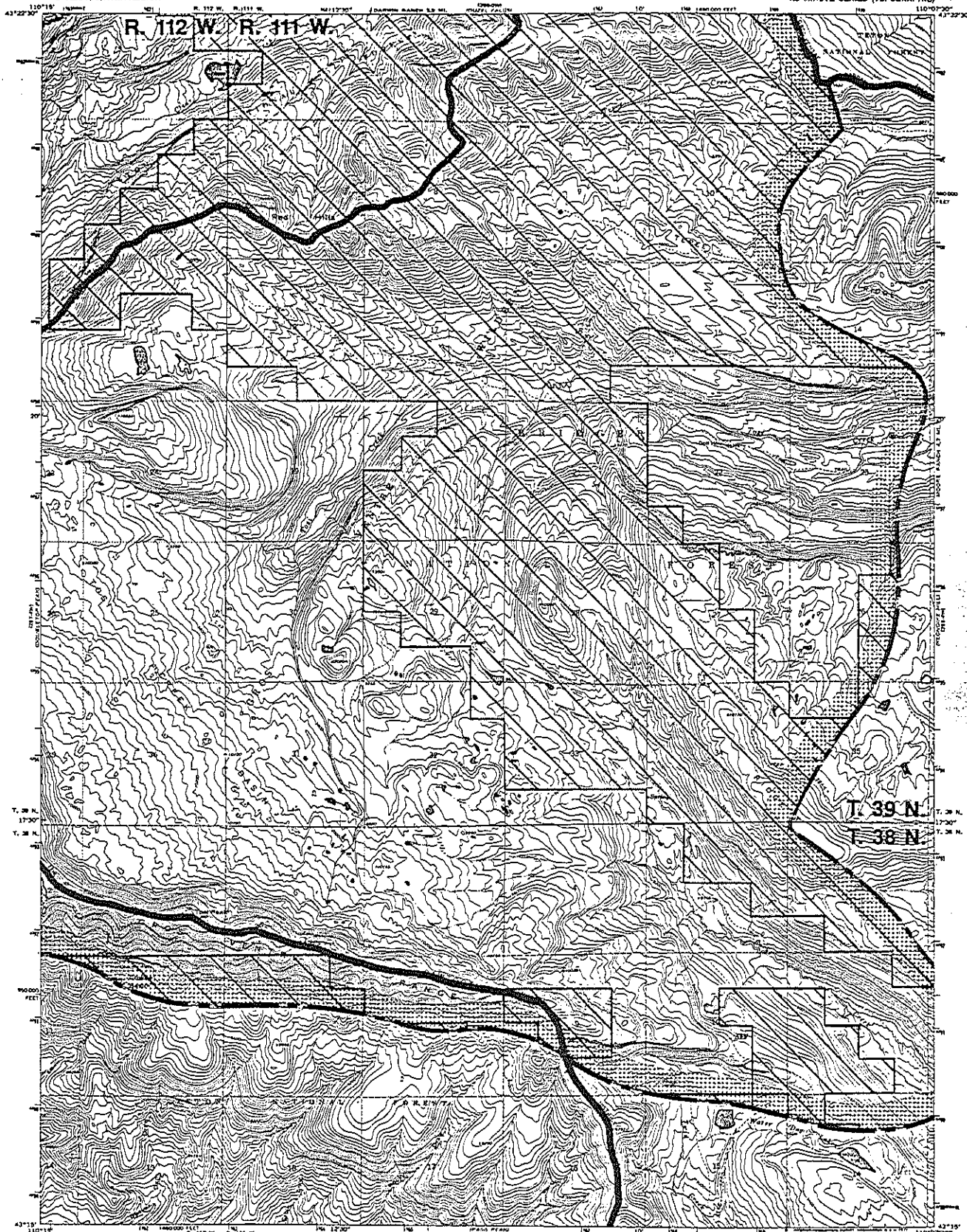


QUADRANGLE LOCATION

DOUBLETOP PEAK
TETON AND BRIDGER NATIONAL FORESTS
HOBACK, GROS VENTRE AND GREEN RIVER
RANGER DISTRICTS
(GROS VENTRE SEC)

1972

287-6W



Maped, edited, and published by the Geological Survey 1967

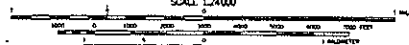
Control by USGS and USCAAS

Topography by photogrammetric methods from aerial photographs taken 1966. Field checked 1967. Panoramic projection. 1927 North American datum. 10,000-foot grid based on Wyoming coordinate system, zone 10N. 1000-meter Universal Transverse Mercator grid, zone 12, shown in blue.

Revised by U.S. Forest Service, Open Unit, 1972. Revisions and minor corrections from 1967 photograph and 1971 field work.

Not Topographic Map

This map contains both National Forest and Private Land.



CONTOUR INTERVAL 40 FEET
DATUM IS MEAN SEA LEVEL

ROAD CLASSIFICATION

Trunk

TOWNSHIP AND SECTION LINE CLASSIFICATION

- Surveyed, highly reliable
- Surveyed, location approximate
- Unsurveyed, Bureau of Land Management projection

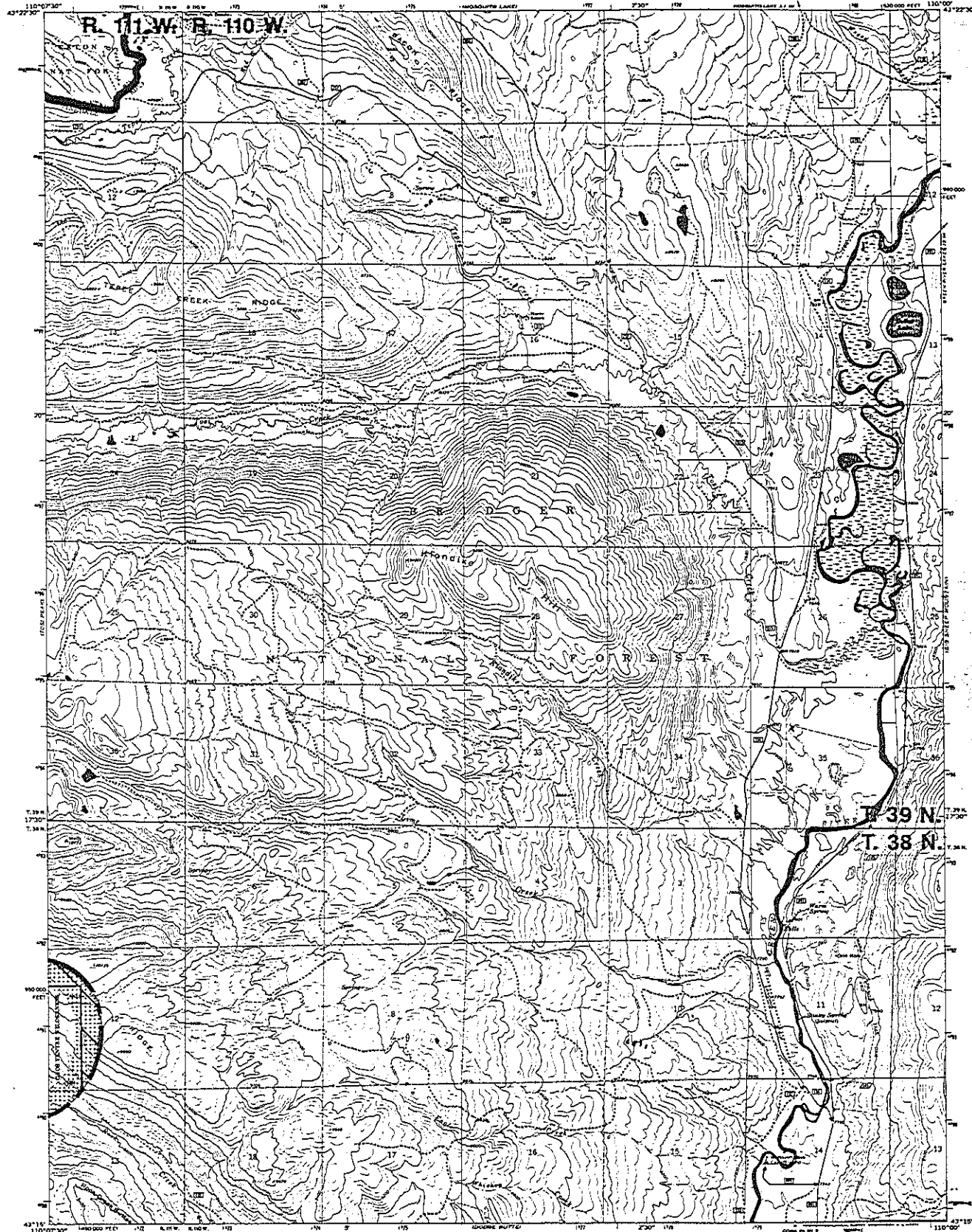
TOSI PEAK
TETON AND BRIDGER NATIONAL FORESTS
GROS VENTRE, HIBBICK AND
GREEN RIVER RANGER DISTRICTS

TOSI PEAK 907
1972
286-310

Tosi Peak 16

UNITED STATES
DEPARTMENT OF THE INTERIOR
GEOLOGICAL SURVEY
MODIFIED FOR USDA FOREST SERVICE USE

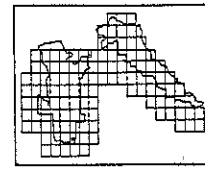
KLONDIKE HILL QUADRANGLE
WYOMING - SUBLETTE CO.
7.5 MINUTE SERIES (TOPOGRAPHIC)



Base map prepared by the U.S. Geological Survey
Control by USGS and USGAS
Topographic for cartographic purposes from aerial
photographs taken 1966. First checked 1967
Photocopy production, 1927 North American datum
10,000-foot and based on Wyoming coordinate system,
zone 12
1000-meter Universal Transverse Mercator and decl.
zone 12, shown in blue
Five red dashed lines indicate selected fence lines
Modification to USGS base map by Geographical Service
Center from 1961 aerial photography and 1962 correction
quadrangle furnished by the Sublette County



- CONTOUR INTERVAL 40 FEET
DOTTED LINES REPRESENT 20-FOOT CONTOURS
DATUM TO MEAN SEA LEVEL
- LEGEND
- National Forest Boundary
 - Assumed Land within the National Forest
Boundary as of 1962
 - TOWNSHIP AND SECTION LINE CLASSIFICATION
 - Surveyed, Location Revealed
 - Surveyed, Location Approximate
 - Unsurveyed, Protracted
 - Primary Highway
 - Secondary Highway
 - Unimproved Light Duty
 - Unimproved Dirt
 - Trail
 - Locked Gate
 - Interstate Highway
 - U.S. Highway
 - State Highway
 - County Road
 - Forest Road
 - Forest Trail



KLONDIKE HILL, WYO.
143135-111000/7.5
1967

KLondike Hill 17