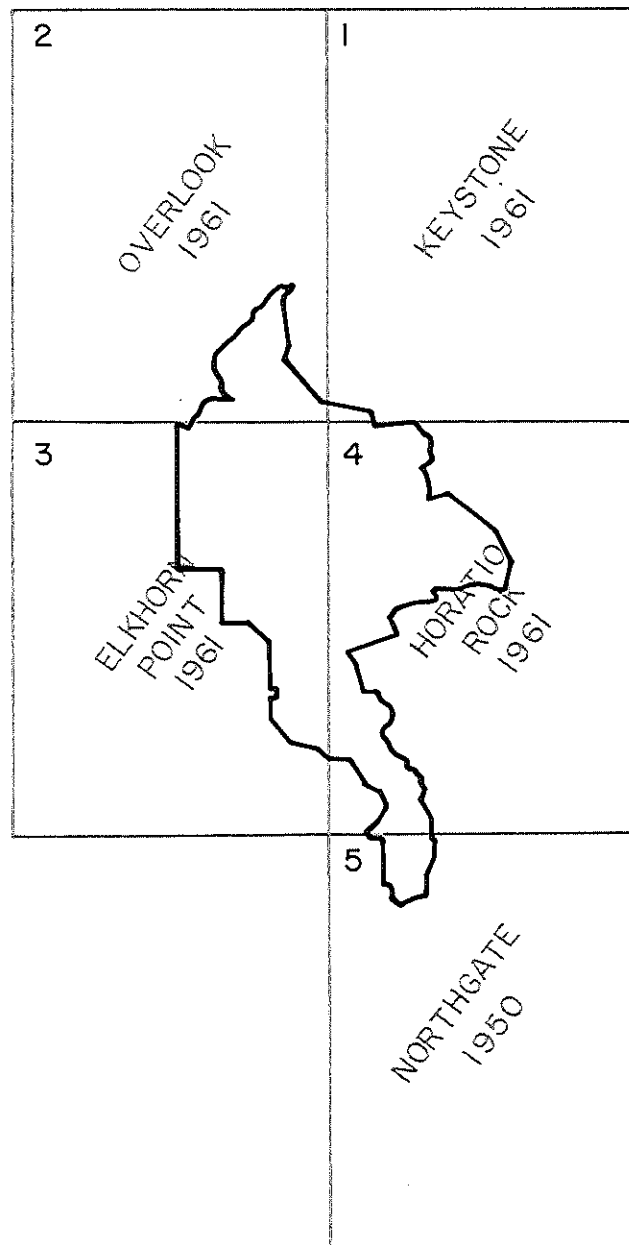
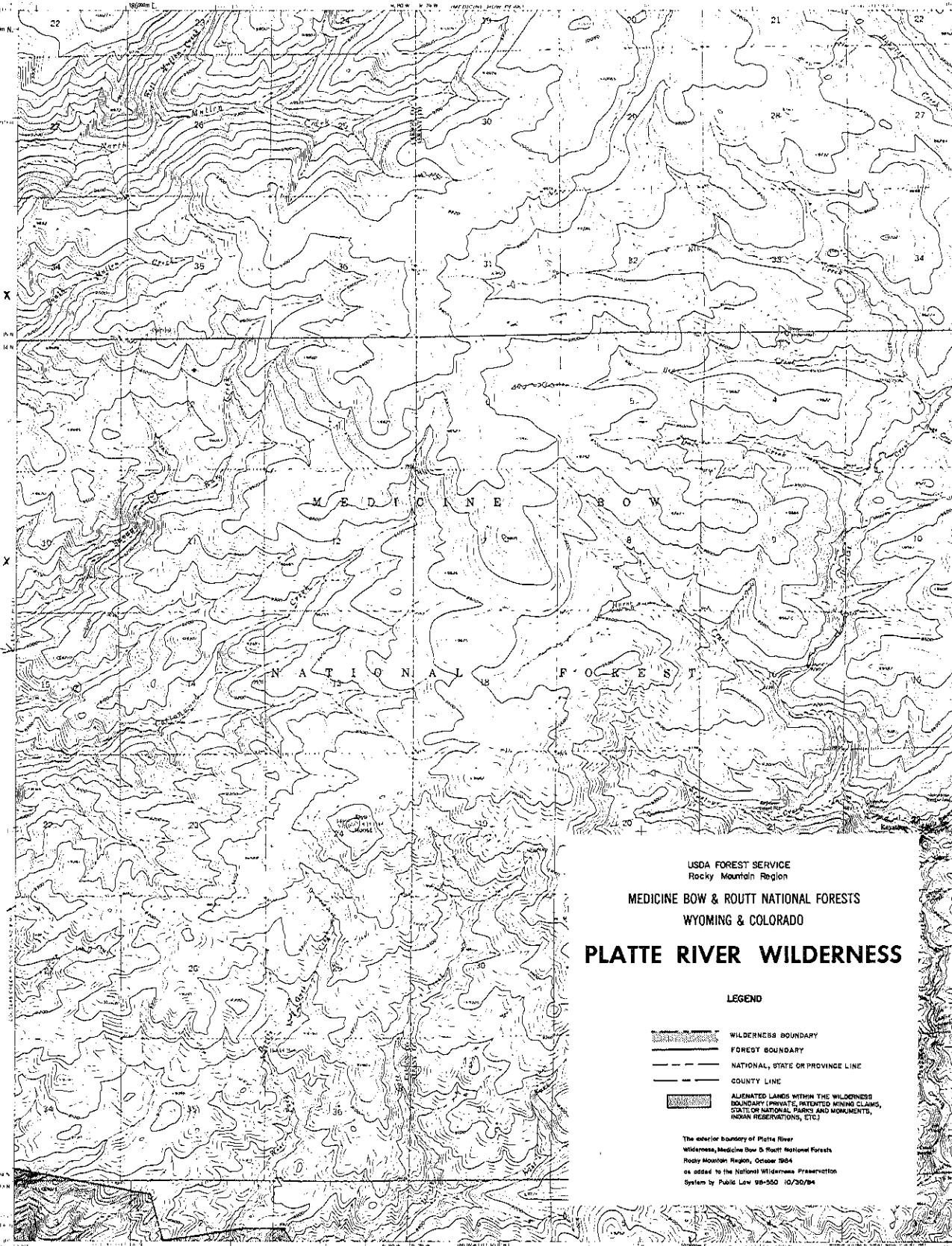


INDEX MAP

PLATTE RIVER WILDERNESS





USDA FOREST SERVICE
Rocky Mountain Region
MEDICINE BOW & ROUITT NATIONAL FORESTS
WYOMING & COLORADO

PLATTE RIVER WILDERNESS

LEGEND

- WILDERNESS BOUNDARY
- FOREST BOUNDARY
- NATIONAL, STATE OR PROVINCE LINE
- COUNTY LINE
- ALIENATED LANDS WITHIN THE WILDERNESS BOUNDARY (PRIVATE, PATENTED MINING CLAIMS, STATE OR NATIONAL PARKS AND MONUMENTS, INDIAN RESERVATIONS, ETC.)

The exterior boundary of Platte River Wilderness, Medicine Bow & Routt National Forests, Rocky Mountain Region, October 1964, as added to the National Wilderness Preservation System by Public Law 98-550 10/20/84

Map prepared, edited, and published by the Geological Survey as part of the Department of the Interior program for the development of the Medicine River Basin.

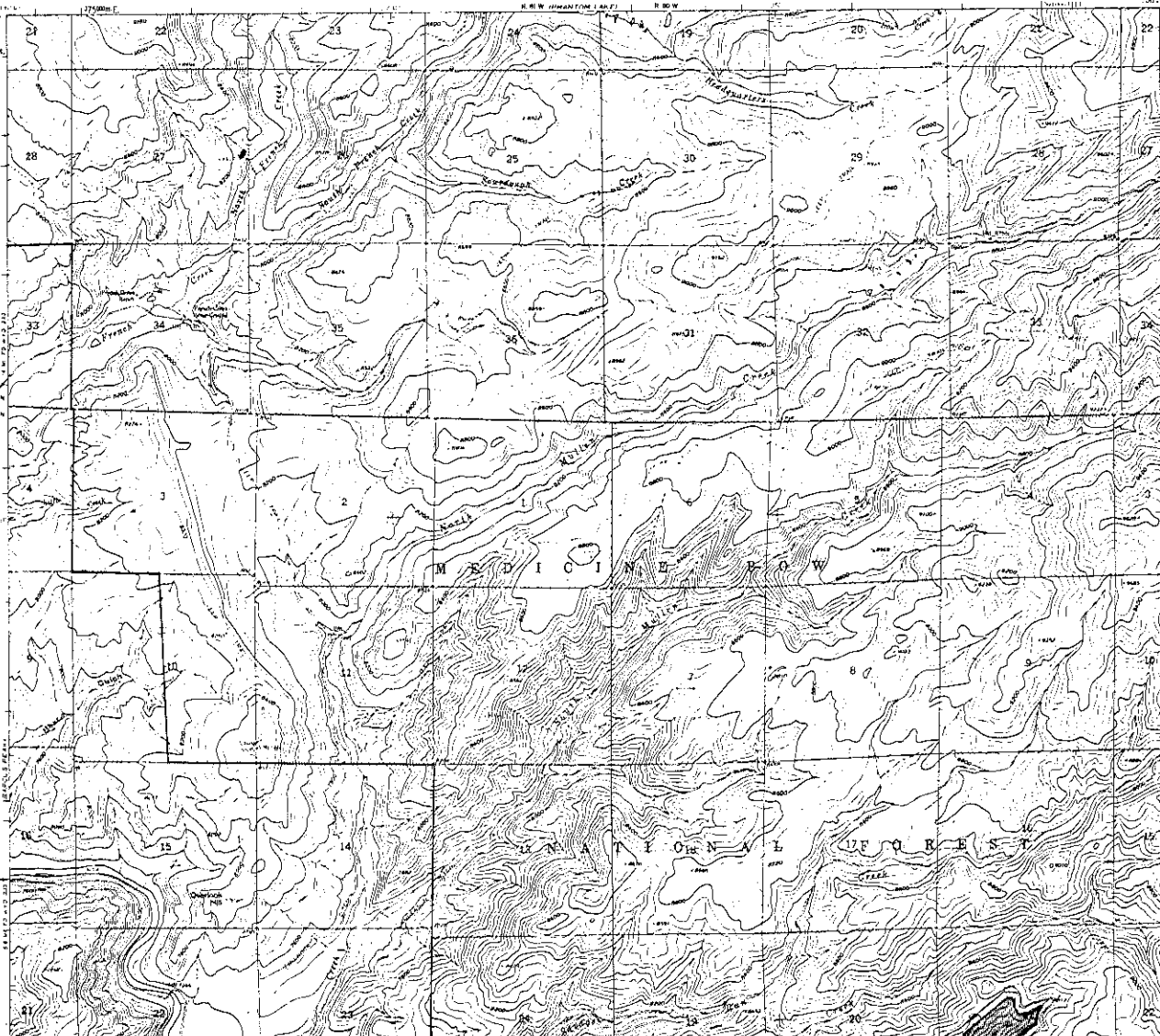
Topographic features shown on this map are based on aerial photographs taken in 1964 and 1965. Place names, except from 1927 North American edition, 10,000 foot and below on Wyoming coordinate system and 10,000 foot and below on Colorado coordinate system. 1960 edition of National Map of the United States.

CUTTING INTERVAL 20 FEET
(VERTICAL SCALE 1:10,000)

FOR SALE BY U.S. GEOLOGICAL SURVEY, DENVER 25, COLORADO OR WASHINGTON 25, D.C.
A FOLDER CONTAINING EXPLANATIONS, MAPS, AND SYMBOLS IS AVAILABLE ON REQUEST

ROAD CLASSIFICATION
Light duty (unimproved dirt)

KEYSTONE, WYO
1963
10/20/84



USDA FOREST SERVICE
Rocky Mountain Region

**MEDICINE BOW & ROUTT NATIONAL FORESTS
WYOMING & COLORADO**

PLATTE RIVER WILDERNESS

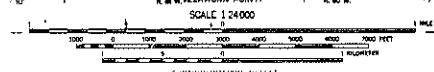
LEGEND

- WILDERNESS BOUNDARY
- FOREST BOUNDARY
- NATIONAL, STATE OR PROVINCE LINE
- COUNTY LINE
- ALIENATED LANDS WITHIN THE WILDERNESS
BOUNDARY (PRIVATE, PATENTED MINING CLAIMS,
STATE OR NATIONAL LANDS, AND MONUMENTS,
INDIAN RESERVATIONS, ETC.)

The western boundary of Platte River
Wilderness, Medicine Bow & Routt National Forests
Rocky Mountain Region, October 1984
as added to the National Wilderness Preservation
System by Public Law 98-500 10/30/84

Map made, edited, and published by the Geological Survey
as part of the Department of the Interior program
for the development of the Mountain River Basin
Study by 1982 and 1983.

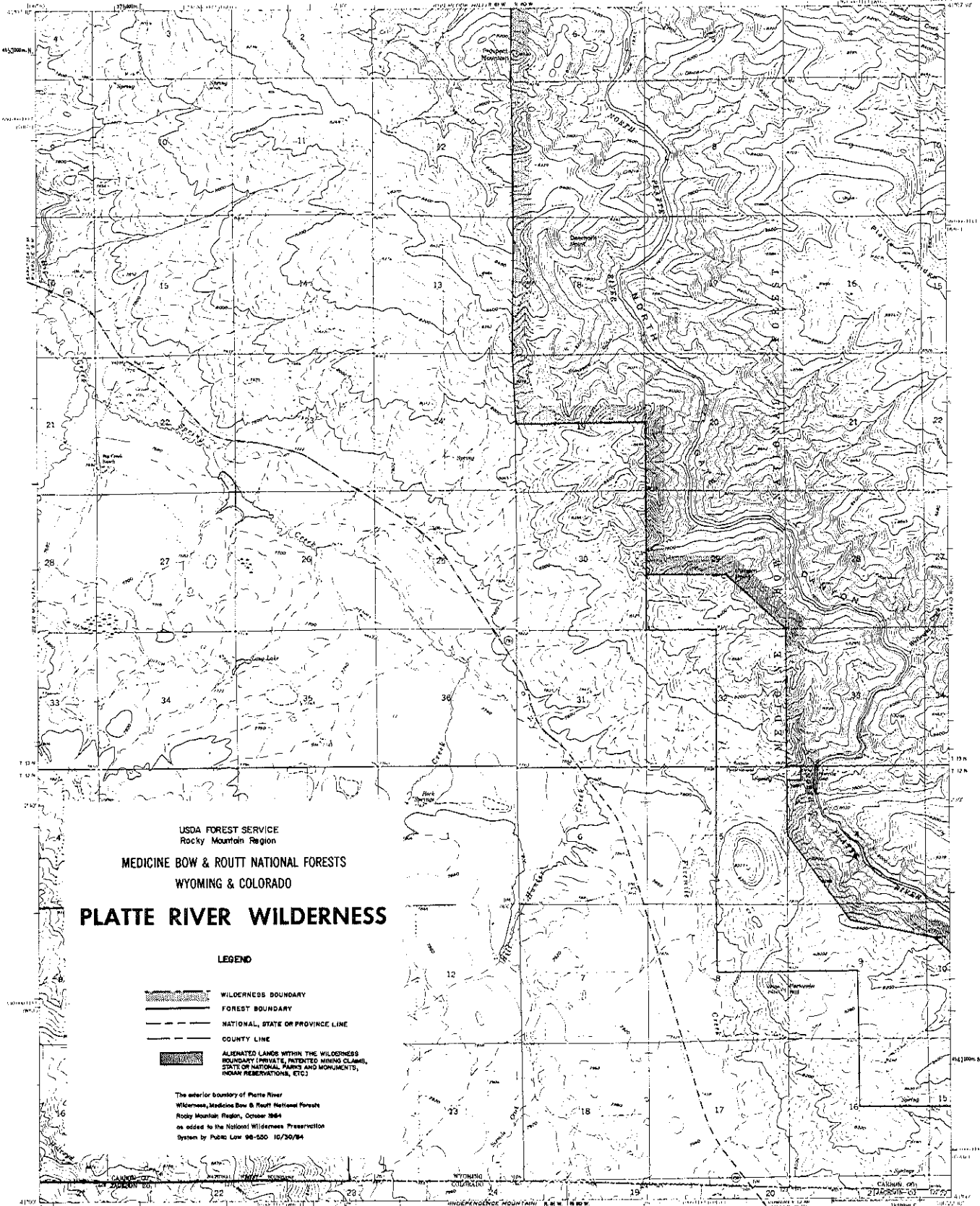
Topographic map (photocopy) is available to the public
for \$1.00 per copy (1984). (Scale 1:25,000.)
Information on the 1982-83 study area is available
to the public for \$1.00 per copy (1984). (Scale 1:25,000.)
1:25,000 map is available to the public for \$1.00 per copy
(1984). (Scale 1:25,000.)



ROAD CLASSIFICATION
Light duty Unimproved dirt

OVERLOOK HILL, WYO
NAD 83, WGS 84, 1984

FOR SALE BY U.S. GEOLOGICAL SURVEY, DENVER 25, COLORADO OR WASHINGTON 25, D.C.
A 1:25,000 TOPOGRAPHIC MAP AND SYMBOLS IS AVAILABLE FOR \$1.00



USDA FOREST SERVICE
Rocky Mountain Region

MEDICINE BOW & ROUTT NATIONAL FORESTS
WYOMING & COLORADO

PLATTE RIVER WILDERNESS

LEGEND

- WILDERNESS BOUNDARY
- FOREST BOUNDARY
- NATIONAL, STATE OR PROVINCE LINE
- COUNTY LINE
- ALIENATED LANDS WITHIN THE WILDERNESS BOUNDARY (PRIVATE, PATENTED MINING CLAIMS, STATE OR NATIONAL PARKS AND MONUMENTS, INDIAN RESERVATIONS, ETC.)

The exterior boundary of Platte River
Wilderness, Medicine Bow & Routt National Forests
Rocky Mountain Region, October 1964
as added to the National Wilderness Preservation
System by Public Law 96-520 10/30/84

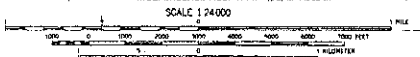
Maped, edited, and published by the Geological Survey
as part of the Department of the Interior program
for the development of the Minotaur River Basin

Compiled by 1947 and 1964

Topography by photogrammetry, modified from aerial
photographs taken 1957. Forest boundary 1962.

Relief and contour lines based on Wyoming coordinate system and 1:50,000 scale
and on Colorado coordinate system and 1:50,000 scale
1:50,000 scale contour lines are shown in the field notes.

Color and shaded lines indicate color in the field notes, where
generally in the aerial photographs. These are shown in the field notes.





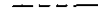
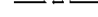

CONTINENTAL SHEET
1:50,000 SCALE
1:50,000 SCALE

WATER CLASSIFICATION
Medium duty
Light duty
Unimproved dirt
Slate shale

ELKHORN POINT, WYO-COLO
NO. 102 WYO-COLO
(196)

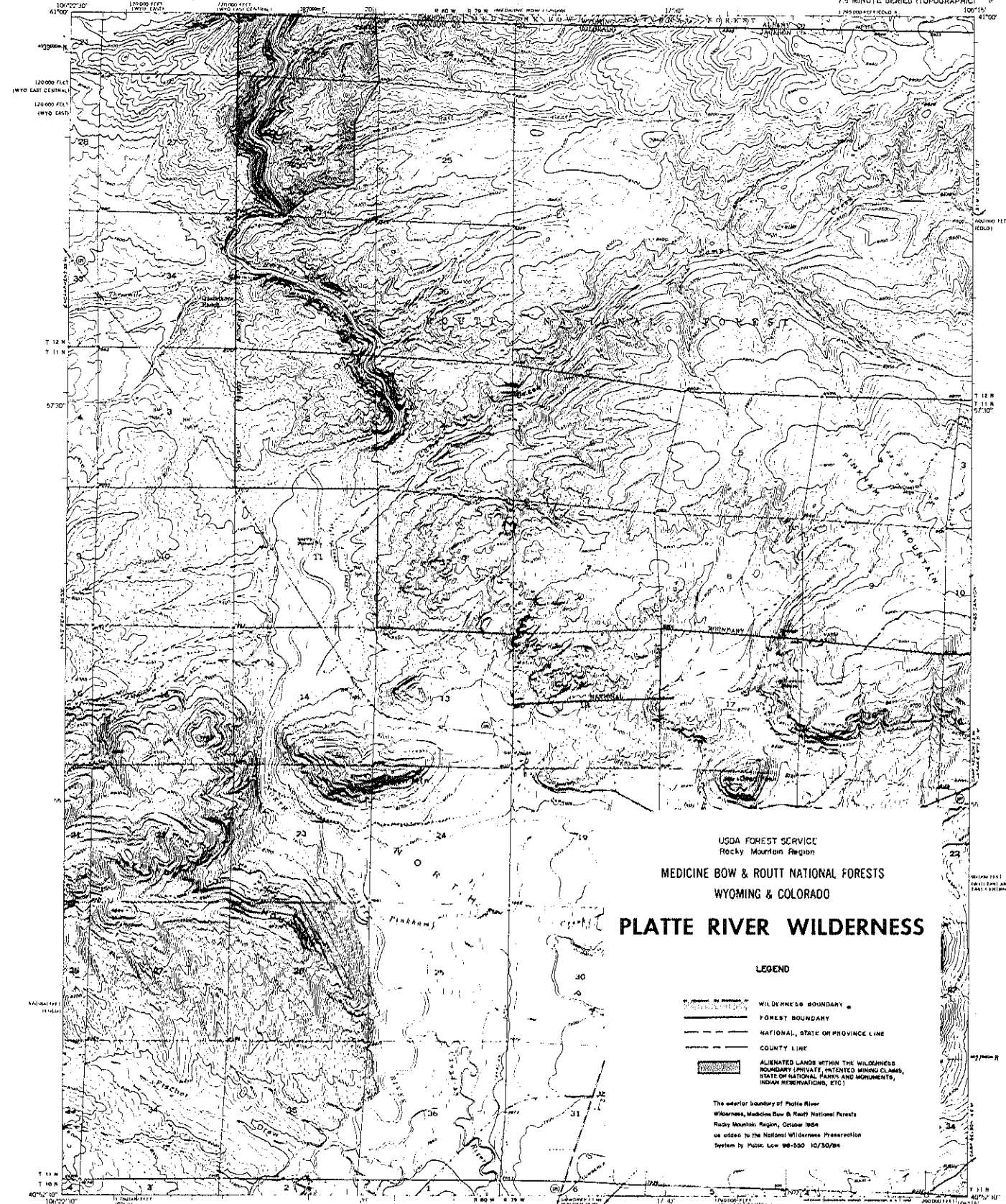
USDA FOREST SERVICE
Rocky Mountain Region
MEDICINE BOW & ROUITT NATIONAL FORESTS
WYOMING & COLORADO
PLATTE RIVER WILDERNESS

LEGEND

-  WILDERNESS BOUNDARY
-  FOREST BOUNDARY
-  NATIONAL, STATE OR PROVINCE LINE
-  COUNTY LINE
-  ALIENATED LANDS WITHIN THE WILDERNESS
BOUNDARY (PRIVATE, PATENTED MINING CLAIMS,
STATE OR NATIONAL PARKS AND MONUMENTS,
INDIAN RESERVATIONS, ETC.)

The exterior boundary of Platte River
Wilderness, Medicine Bow & Routt National Forests
Rocky Mountain Region, October 1984
as added to the National Wilderness Preservation
System by Public Law 98-550 10/30/84

SCALE 1:24,000
1 INCH = 2,000 FEET
0 1000 2000 3000 4000 5000 6000 7000 8000 9000 10000
METERS
0 1000 2000 3000 4000 5000 6000 7000 8000 9000 10000
FEET



USDA FOREST SERVICE
Rocky Mountain Region

MEDICINE BOW & ROUTT NATIONAL FORESTS
WYOMING & COLORADO

PLATTE RIVER WILDERNESS

LEGEND

- WILDERNESS BOUNDARY
- FOREST BOUNDARY
- NATIONAL, STATE OR PROVINCE LINE
- COUNTY LINE
- ALIENATED LANDS WITHIN THE WILDERNESS BOUNDARY (PRIVATE, PATENTED MINING CLAIMS, STATE OF NATIONAL PARKS AND MONUMENTS, INDIAN RESERVATIONS, ETC.)

The exterior boundary of Platte River Wilderness, Medicine Bow & Routt National Forests, Rocky Mountain Region, October 1984, as added to the National Wilderness Preservation System by Public Law 98-555 10/30/84.

ROAD CLASSIFICATION

- Heavy duty Light duty
- Medium duty Unimproved dirt
- U.S. Route State Route

NORTHGATE, COLO.-WYO.
NAD83 5-W 10615/175
1990