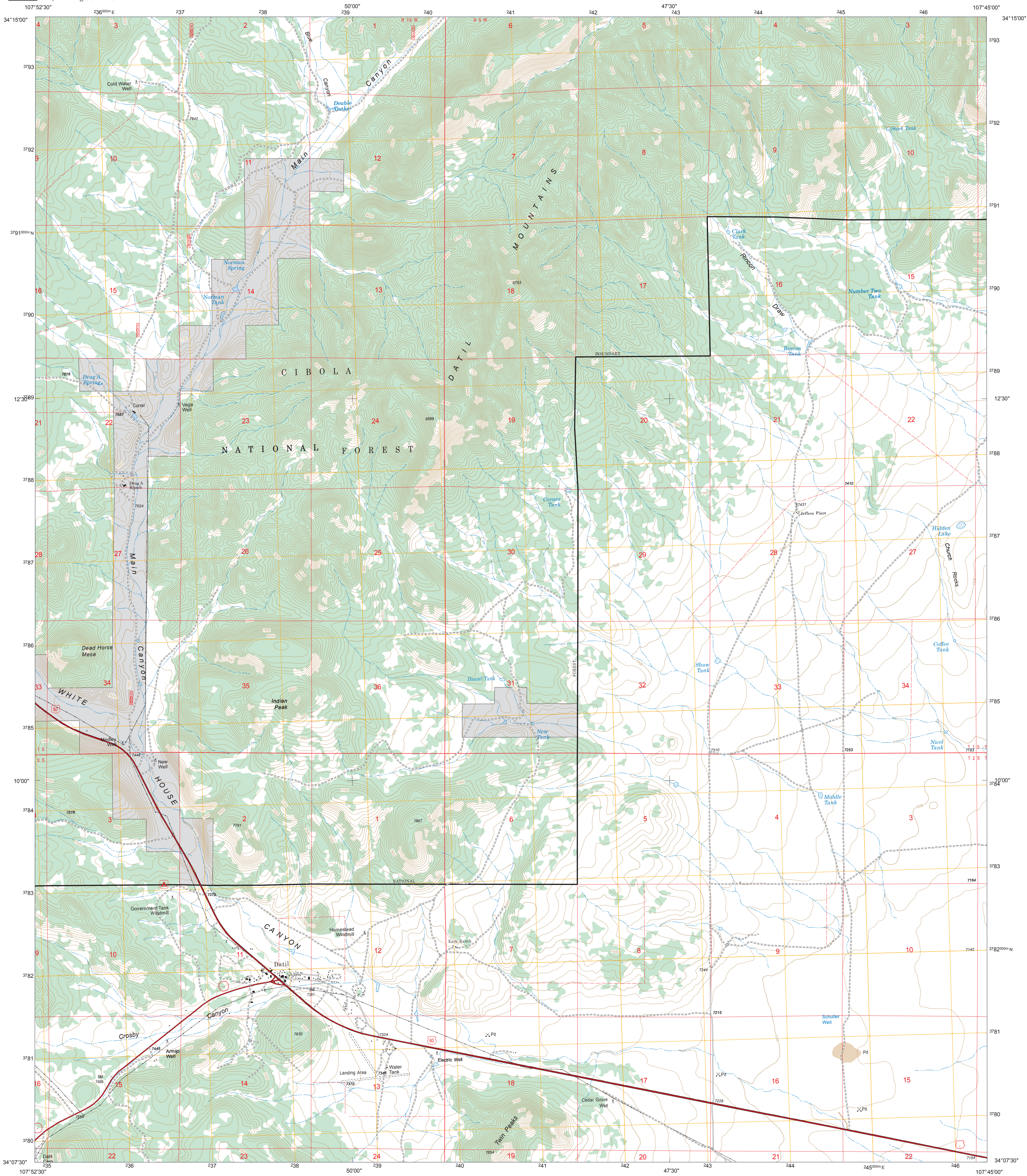




United States Forest  
Department of Agriculture Service

DATIL QUADRANGLE  
NEW MEXICO  
7.5-MINUTE SERIES (TOPOGRAPHIC)



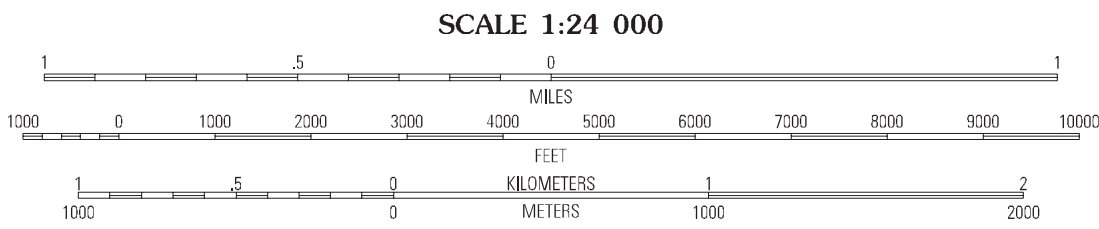
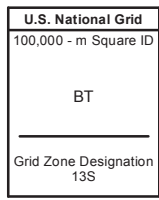
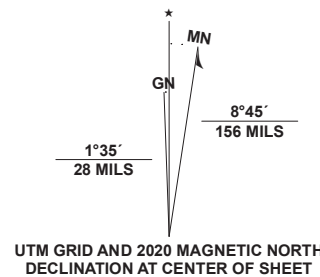
Produced by the USDA Forest Service.  
North American Datum of 1983 (NAD 83).  
Projection and 1,000-meter ties: Universal Transverse Mercator, zone 13.

Full Revision of Forest Service lands 1995  
Updates to Transportation 1995  
Updates to Boundaries 1995

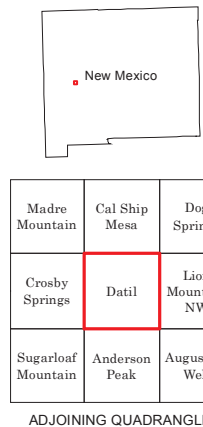
Non-National Forest System lands within the National Forest as of 1995.  
Inholdings may exist in other National or State reservations.

This is not a legal document. Public lands are subject to change and leasing, and may have access restrictions. Not all roads and trails on this map are open to motor vehicle use. Check with appropriate officials and obtain appropriate regulatory maps and information. Obtain permission before entering private lands.

This map product uses the most current data available in the USDA Forest Service cartographic database. Modifications, updates, and corrections may be made at any time. Print quality is determined by the output device used when producing a hardcopy product.



**MOTOR VEHICLE USE MAP (MVUM)**  
The MVUM is a legal enforceable document that identifies the roads, trails, and areas where motor vehicle use is allowed in a Forest Service administrative unit or ranger district. MVUMs are reissued each year. It is the responsibility of motor vehicle users to acquire the current MVUM.  
MVUMs are available FREE at Forest Service offices and at [www.fs.fed.us/recreation/programs/ohv/ohv\\_maps.shtml](http://www.fs.fed.us/recreation/programs/ohv/ohv_maps.shtml)



HIGHWAYS AND ROADS	
Interstate.....	5
U.S. ....	101
State.....	79
County.....	6
National Forest, suitable for passenger cars.....	105
National Forest, suitable for high clearance vehicles.....	60
National Forest Trail.....	384
This product generated and downloaded on 1/14/2021.	
Highway.....	
Road, Unspecified.....	
Road, Paved.....	
Road, Gravel.....	
Road, Dirt.....	
Unimproved.....	
Road, Closed.....	
Trail.....	
Gate: Barrier.....	
Check with local Forest Service unit for current travel conditions and restrictions	

DATIL, NM