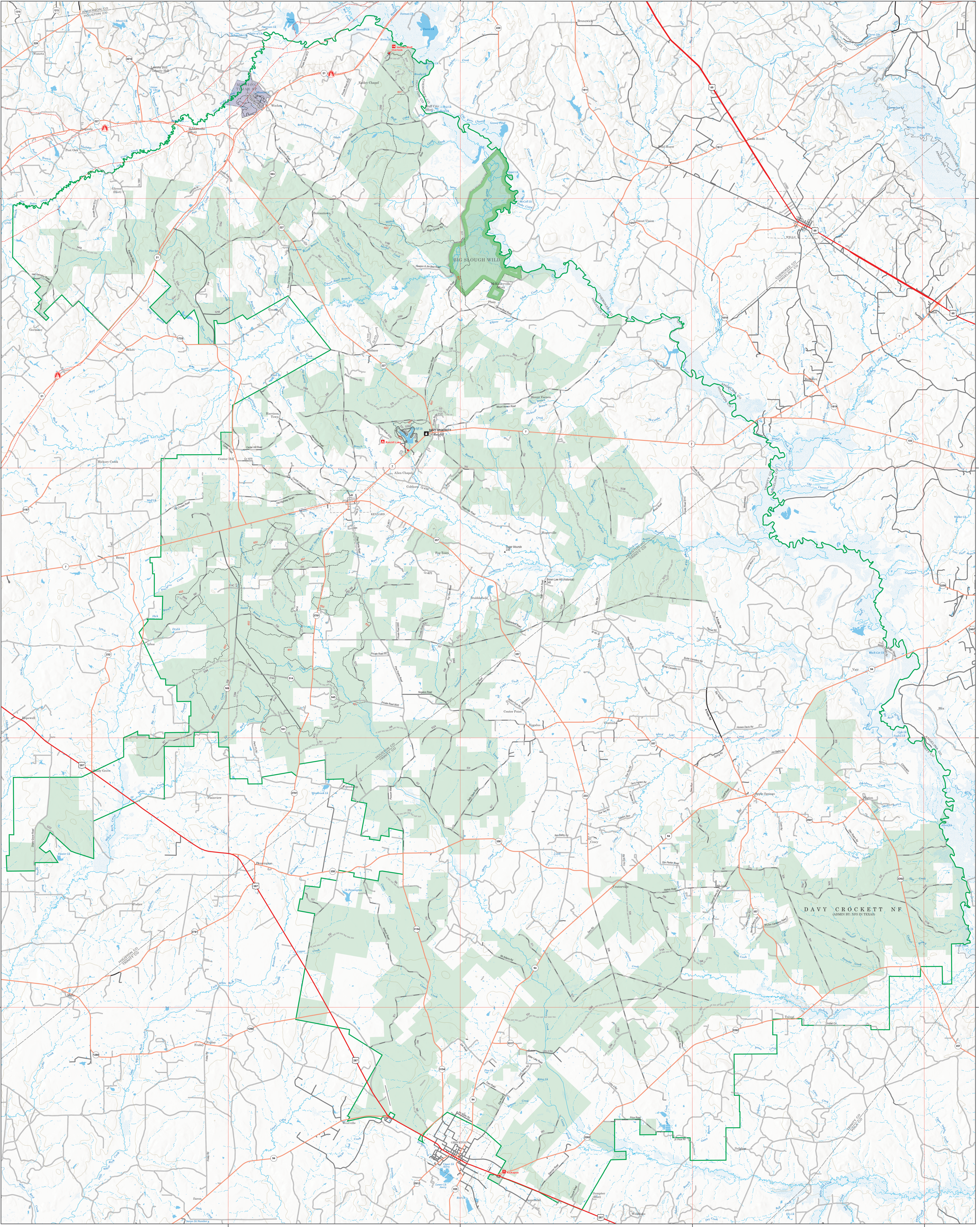
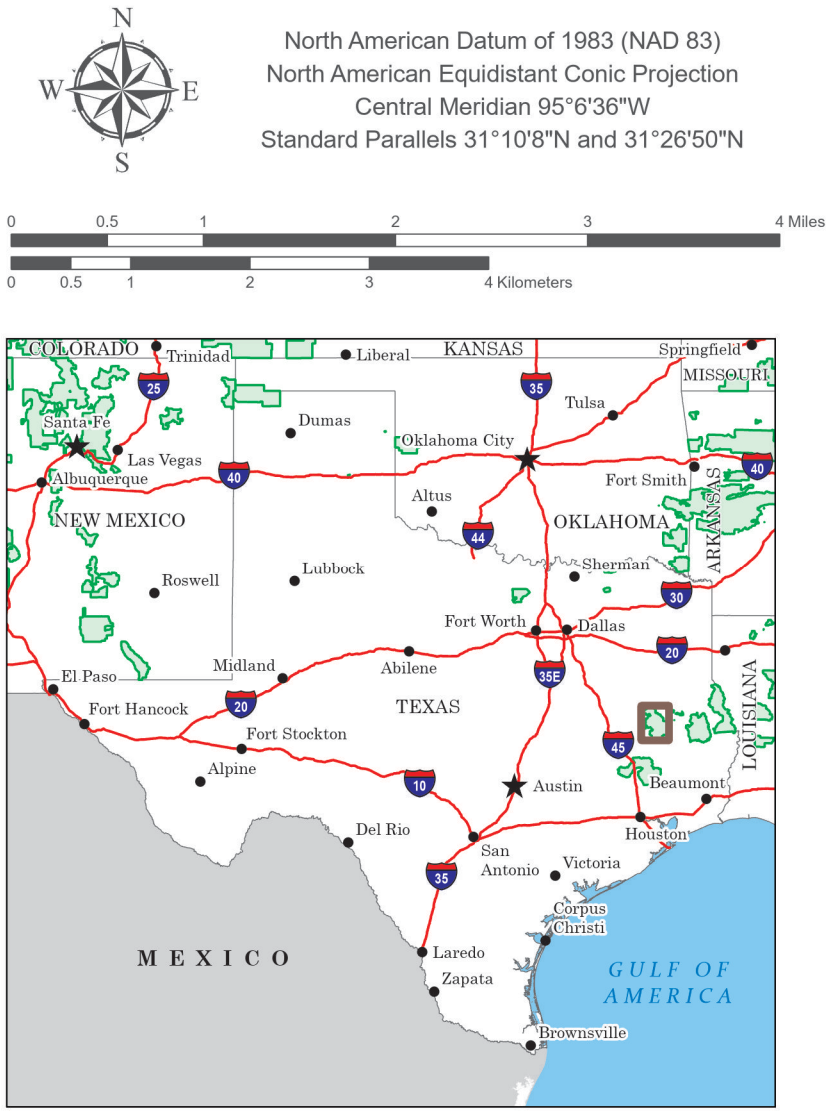


Davy Crockett

National Forest

Scale 1:63,360



**FEDERAL BOUNDARIES**  
Proposed National Forest  
Administrative National Forest  
Forest Service Ranger District  
National Forest  
U.S. Fish & Wildlife Service  
Geopolitical Boundaries  
County (or Equivalent)  
Incorporated Place (City, Town, etc.)  
Unincorporated Place  
Wilderness Observation  
Other Observations  
Land Ownership  
Township and Range  
FEDERAL OFFICES  
RECREATION  
WATERBODIES

**LEGEND**  
ROADS  
ROAD SHIELDS/NUMBER  
OTHER TRANSPORTATION  
NATIONAL TRAIL MARKERS  
WATER POINTS  
WATER LINES  
WATERBODIES

\*Not all symbols appear on map.

MOTOR VEHICLE USE MAP (MVUM)

The MVUM is a legal enforceable document that identifies the roads, trails, and areas where motor vehicle use is allowed in a Forest Service administrative unit or ranger district. MVUMs are released each year. It is the responsibility of motor vehicle users to acquire the current MVUM. MVUMs are available FREE at Forest Service offices and at:

[https://www.fs.usda.gov/recreation/programs/botvohr\\_maps.shtml](https://www.fs.usda.gov/recreation/programs/botvohr_maps.shtml)

This is not a legal document. Public lands are subject to change and leasing, and may have access restrictions. Not all roads and trails on this map are open to motor vehicle use. Check with appropriate officials and obtain appropriate regulatory maps and information. Obtain permission before entering private lands.

The USDA Forest Service uses the most current and complete data available. GIS data and product accuracy may vary. Using GIS products for purposes other than those for which they were intended may yield inaccurate or misleading results.

USDA is an equal opportunity provider, employer, and lender.