



FSTopo PDF User Guide

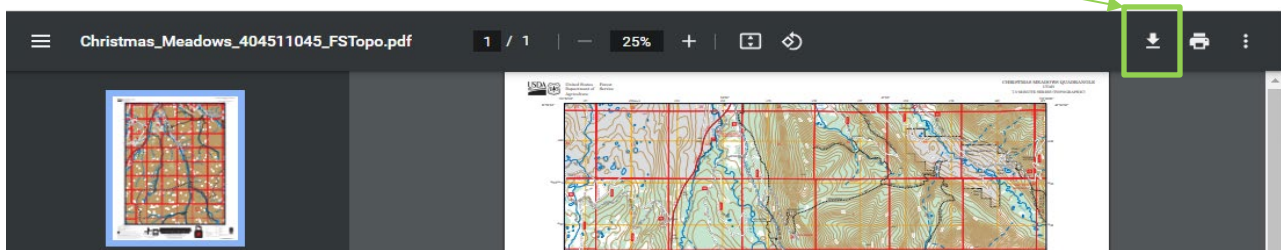
Introduction

The FSTopo product is produced using two templates, one for the conterminous US product at 1:24,000 scale and covering a 7.5-minute extent using a 21 3/4" x 27" page size and another for the Alaska product at 1:63,360 scale covering a 15-minute extent using 18" x 21 3/4" page size. The document produced is a geospatial PDF which can be viewed and printed using the Adobe Reader or Acrobat.

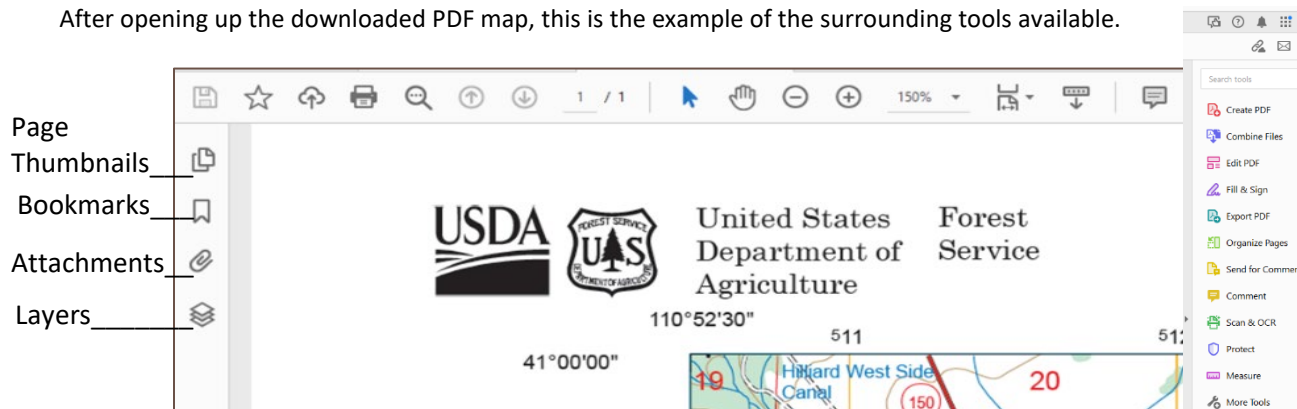
PDF Overview

The FSTopo PDF map is generated in a map viewer download tool. After selecting and clicking on desired quad to download you will see what is like example below.

Then Click the download icon to save the PDF to a preferred drive.



After opening up the downloaded PDF map, this is the example of the surrounding tools available.



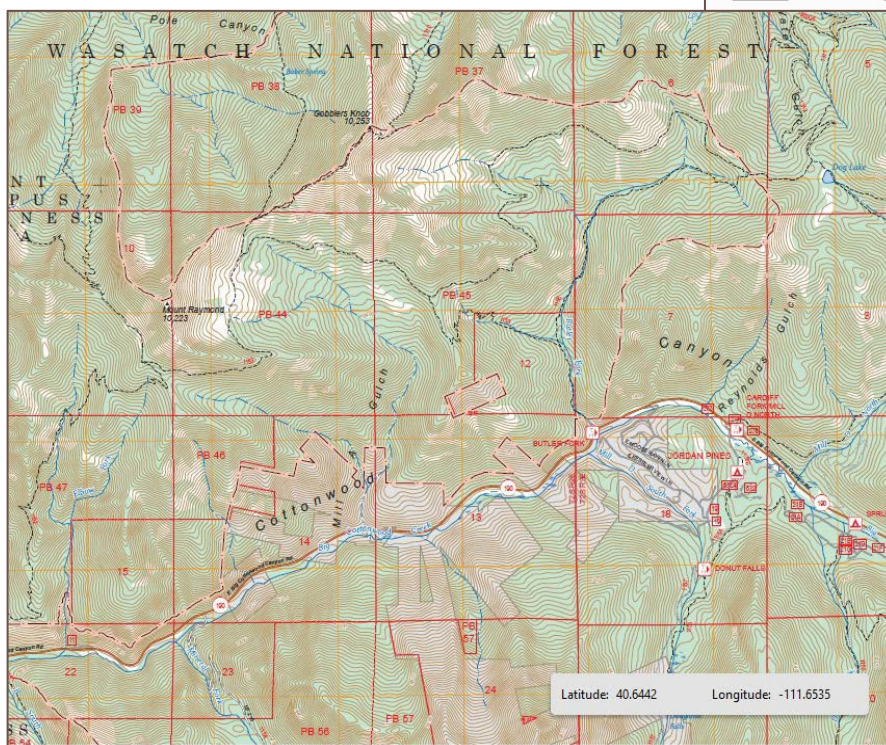
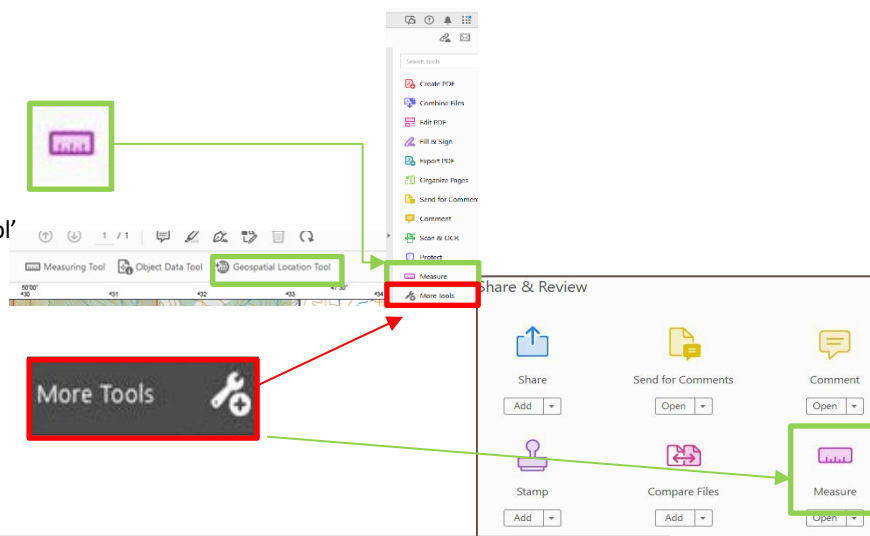
Geospatial Location Tool

The FSTopo PDF maps have been embedded with geospatial information. This enables the user to obtain longitude - latitude X and Y coordinates from the map when opened in the viewer.

This functionality is enabled by selecting the Geospatial location tool in the Measure Tool set . Thereafter, the icon will appear on the Adobe Reader or Acrobat Toolbar. Each time a geospatial PDF is opened, this 'Find Location' icon must be selected to enable the lat/long display. As the crosshairs are moved within the map extent, latitude and longitude values will be displayed as shown below.

To Enable Geospatial Location Tool

- Select the Measure tool icon.
- Select the 'Geospatial Location Tool' most likely at top of map area.
- **If** the measure tool icon is **not** on the side tool bar, then select **More Tools** and Open or Add the Measure Tool to the side tool bar.



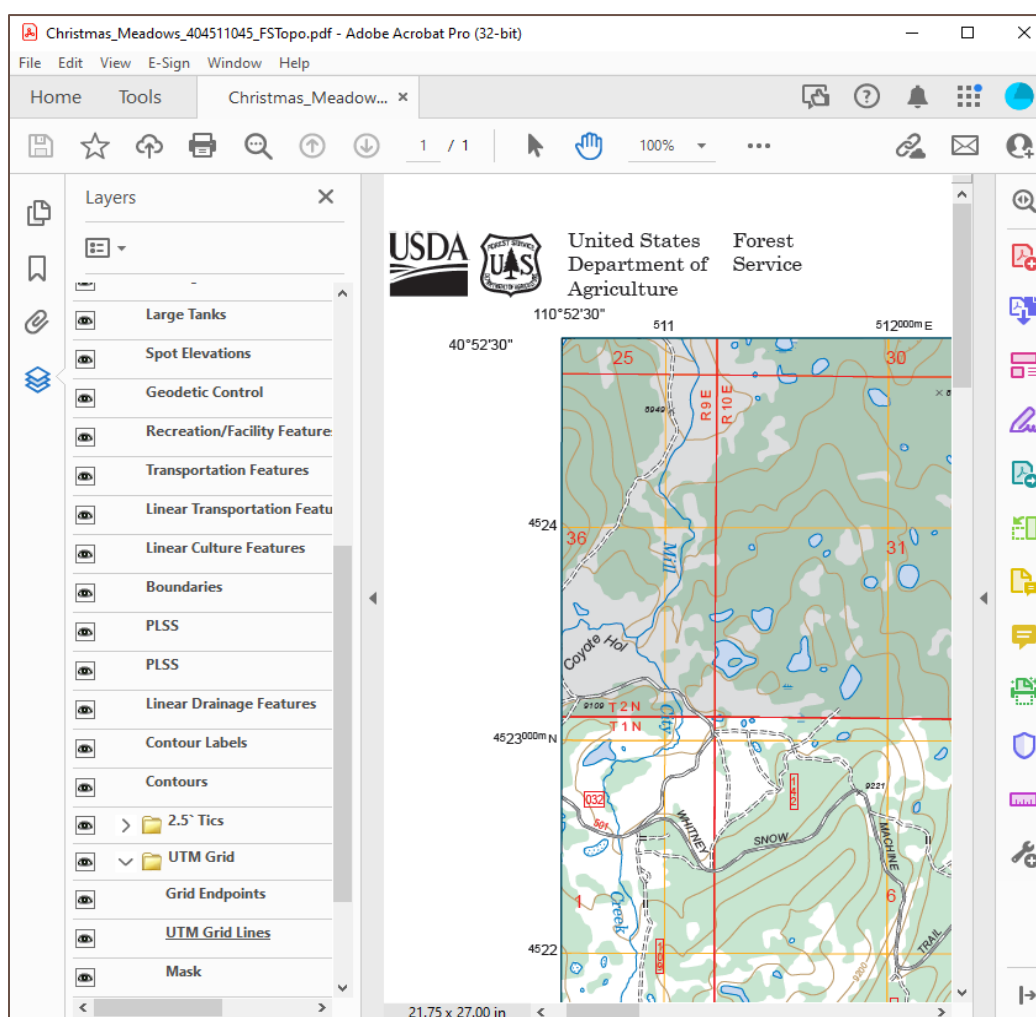


Layer Organization

The FSTopo PDF is organized into layers that can be used to control the visibility of the PDF file's content. The layers can be accessed with the Layers icon on the left side of the viewer window. An example as to how the layers can be used is in the case of viewing UTM grid ticks in place of UTM grid lines.

To turn features/layers on and off:

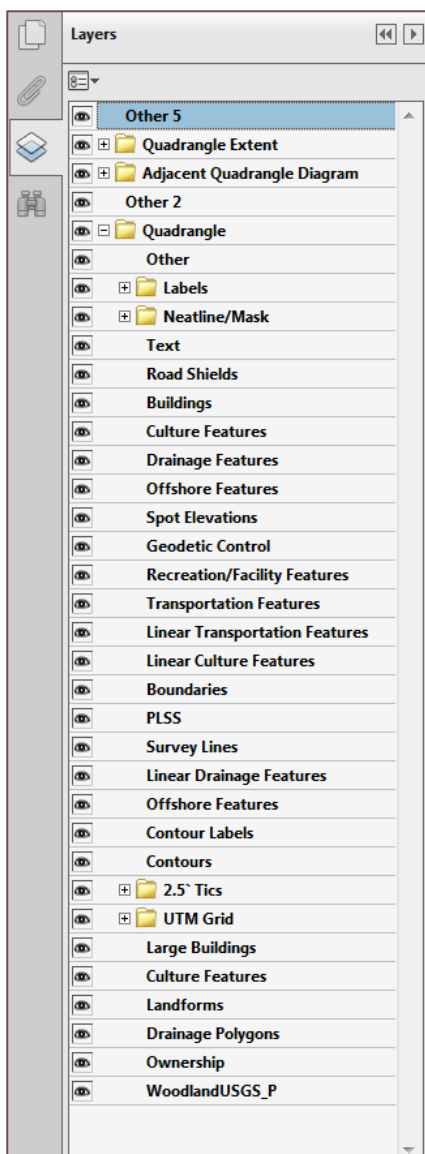
- click the Layers icon.
- Toggle the Layer visibility button to turn off different features.





Layer Descriptions

The following layers may be in the FSTopo PDF
(dependent on feature content of map document):



Layer Name	Description
Other 5	Map surround/marginalia elements
Quadrangle Extent	Quadrangle location diagram map frame
Labels	
State Outline – Default	State name label
Other 4	Quadrangle extent
State Outline	State outline
Adjacent Quadrangle Diagram	Adjacent quadrangle diagram map frame
Other 3	Map frame perimeter delineation
Labels	
Quad Outlines - Default	State name label
Quadrangle Extent	Quadrangle extent (red outline)
Quad Outlines	Adjacent quadrangle outlines
Other 2	
Quadrangle	Quadrangle map frame
Other	
Labels	
Road Shields – Horizontal	Horizontal Road Shield Labels
Road Shields – Vertical	Vertical Road Shield Labels
Neatline/Mask	Neatline/UTM Grid features
Grid Labels	Grid Labels
Neatline	Quadrangle Neatline
Mask	
Text	Quadrangle map text
Road Shields	Road Shields
Buildings	Building point features
Culture Features	Culture point features
Drainage Features	Drainage point features
Offshore Features	Offshore point features
Large Tanks	Large Tank
Survey Features	Survey point features
Spot Elevations	Spot elevation point features
Geodetic Control	Geodetic control point features
Recreation/Facility Features	Recreation/Facility point features
Transportation Features	Transportation point features
Airfield Features	Airfield point features
Leader Arrows	Leader arrows
Linear Transportation Features	Linear Transportation features
Linear Airfield Features	Linear Airfield Features
Railroads	Railroads
Linear Culture Features	Linear Culture Features
Linear Landform Features	Linear Landform Features
Boundaries	Boundaries
PLSS	Public Land Survey System
Survey Lines	Survey Lines
Linear Drainage Features	Linear Drainage Features
Linear Offshore Features	Linear Offshore Features
Contour Labels	Contour labels
Contours	USGS Contour lines
2.5' Tics	
Interior Grid Intersections	Interior Grid Tics
Grid Tics along Neatline	Grid intersections at neatline
UTM Grid	
Interior Grid Intersections	Interior Grid Tics
Grid Tics along Neatline	Grid intersections at neatline
UTM Grid Lines	Full line UTM grid
Large Buildings	Large Buildings
Culture Features	Culture Features
Landform Polygons	Landform Polygons
Drainage Polygons	Drainage Polygons
Ownership	Ownership
Woodland USGS	USGS Woodland tint
Built-up Areas	Built-up Areas

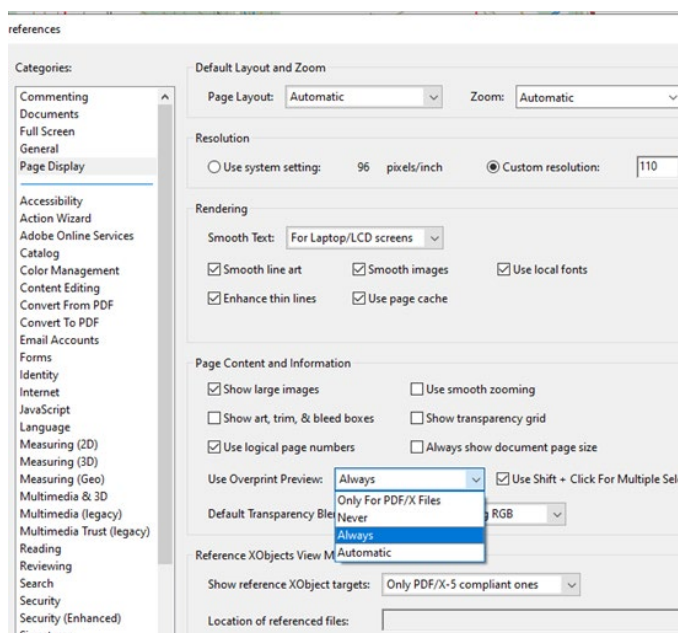


Overprinting

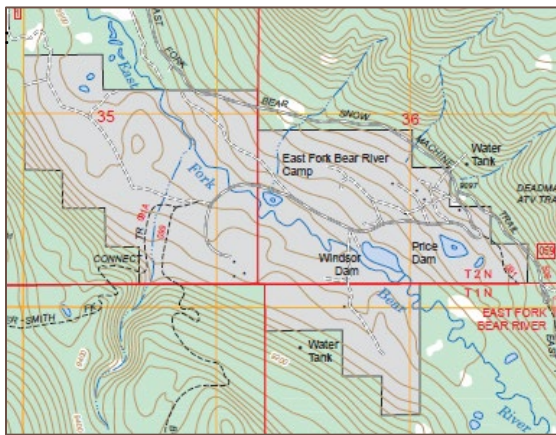
To apply transparency to the Ownership features and show the woodland tint below, the overprint functionality can be used. The overprint functionality in the Acrobat Reader (and other Adobe products) allows colors to blend and resemble a transparency for overlapping features.

Change the preferences in Adobe Reader.

- Open the Preferences Window by clicking the **Edit** Menu and selecting **Preferences** and then **Page Display**.
- Ensure that the “**Use Overprinting Preview**” dropdown says **Always**. As in the example below.
- This Setting only needs to be changed once and will remain as default until changed.



- When the “**Use Overprinting Preview**” dropdown says **Always**, the result will be like the map below right



Without Overprint Preview set



With Overprint Preview set