

Landscape units of Puerto Rico:

Influence of climate, substrate, and topography

William A. Gould, Michael E. Jiménez, Gary S. Potts, Maya Quiñones, and Sebastián Martinuzzi
USDA Forest Service International Institute of Tropical Forestry (IITF)



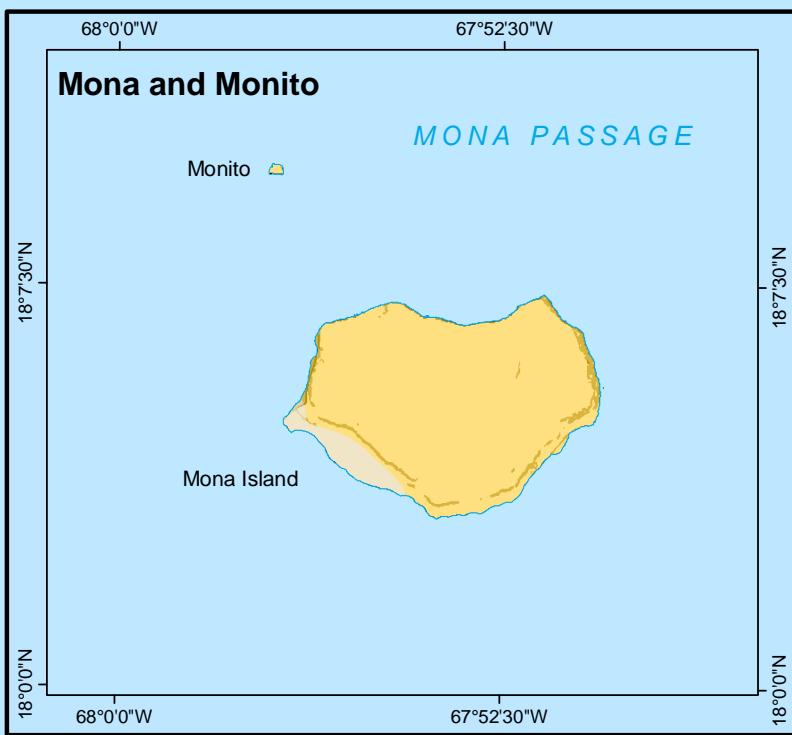
PRGAP ANALYSIS PROJECT

IITF GIS and Remote Sensing Lab

A center for tropical landscape analysis



Desecheo

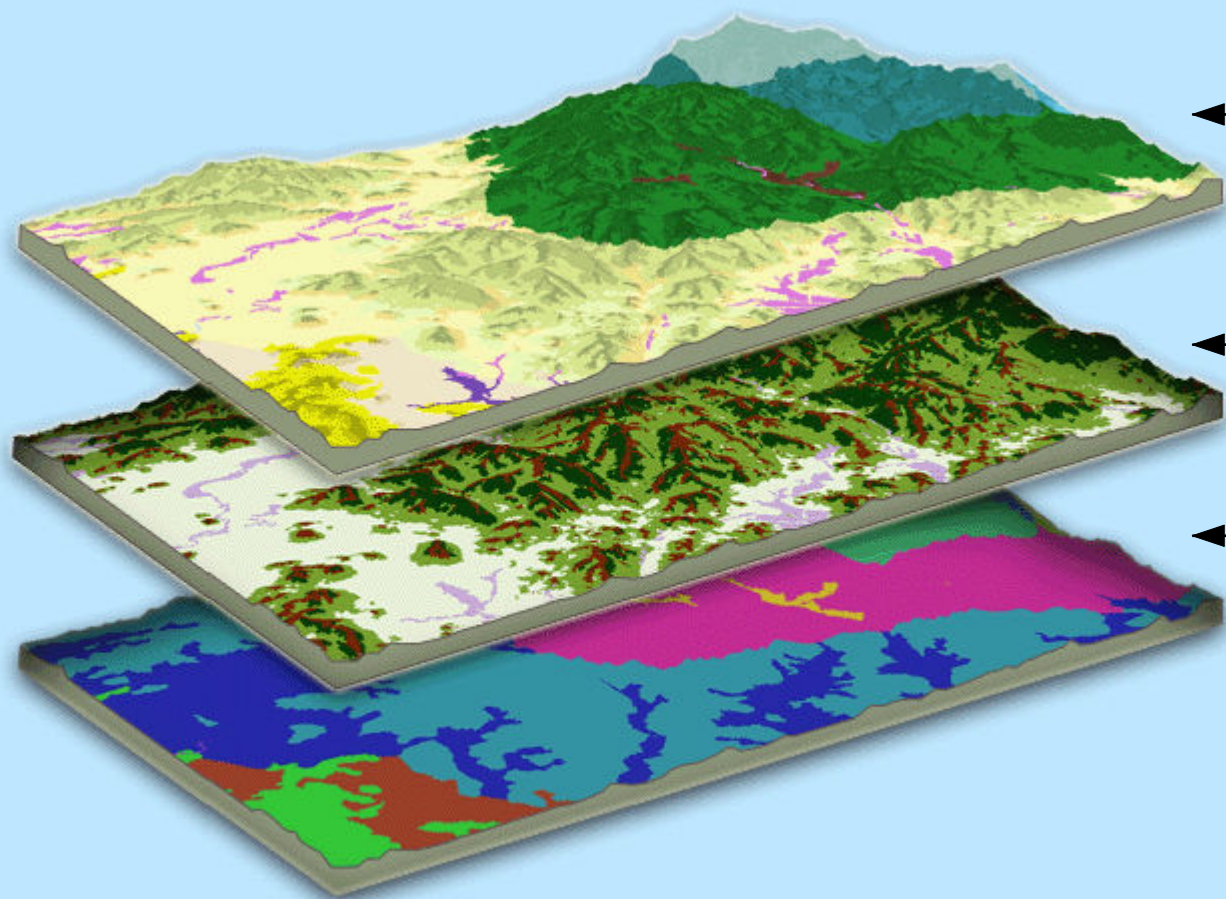


Map description

The landscape units map of Puerto Rico represents climatic, substrate, and topographic variation by integrating six climatic zones (Ewel and Whitmore 1973), six distinct substrates (Bawiec 2001, USGS 2005), five topographic positions or landforms (Martinuzzi et al. 2007), and prominent lakes and rivers (USGS 2005). Substrates were a simplified set of Bawiec's (2001) twelve geologic terrane units and include cretaceous and tertiary limestone deposits, alluvium and other unconsolidated quaternary deposits, intrusive and extrusive volcanic formations and volcanoclastic sedimentary deposits (reworked sediments of volcanic origin – may or may not be calcareous), and ultramafic serpentine and amphibolite formations (low quartz content – typically high pH). We also delimited saline and nonsaline wetlands (USGS 2005). The resulting map displays a set of 57 landscape units for the islands. The map builds on earlier work by Figueroa (1996) mapping geoclimatic variation in Puerto Rico and was developed for the purpose of understanding and modeling variation in vegetation. Natural variation in vegetation has a hierarchy of environmental controls, including climate, geochemical substrates, topography, and disturbance. Geospatial information on these controls is useful for modeling potential variation in vegetation cover and associated ecosystem properties.

- Climatic controls include the range, mean, and variability of air temperatures and precipitation regulated by latitudinal gradients, global atmospheric patterns, orographic patterns, and feedbacks with landcover (Chapin et al. 2005).
- Substrate characteristics (geochemistry) include soil pH, nutrient availability, and texture, which strongly affect plant species composition (Gould et al. 2006). Geochemistry is related to exposed bedrock, quaternary deposits, land use history, and biological processes.
- Topography affects plant species composition by influencing soil moisture, development, texture, and chemistry (Birkeland 1984). Slope position is also related to disturbance and particular landforms may be more or less influenced by flooding, storms, landslides, fire, or human development.

The most abundant landforms in Puerto Rico are the moist and wet slopes on volcanic substrates of the Central and Luquillo Mountains, which include 40% of the area. Moist and wet slopes on limestone substrates make up 10% of the area. Dry hills and slopes make up 6% of the area, with 30% of these on limestone and the remaining 70% on volcanic and ultramafic serpentine substrates. Nearly 12% of the landscape is made up of ridges and 90% of these are in the moist and wet climatic regions. Moist plains include 16% of the area and dry plains include 8% of the area. Wetlands and depressions, not including open water bodies, make up 5% of the area. Nearly 70% of these are in moist climatic regions and just under 30% in dry climatic regions.



Landscape units

This dataset is the result of the integration of geospatial data on landforms and geoclimatic regions of Puerto Rico. We derived 57 classes including water and four types of wetlands.

Slope positions

The landforms dataset includes five slope positions modeled using elevation and topography (Martinuzzi et al. 2007).

Climate and substrate

Sixteen geoclimatic regions integrate climate and geologic information using Holdridge's lifezones (Ewel and Whitmore 1973) and the USGS (Bawiec 2001) geology of Puerto Rico.

Climate (Holdridge lifezones)

Substrate

Limestone

Subtropical dry forest

Subtropical moist forest

Subtropical wet forest

Subtropical rain forest

Lower montane wet forest

Lower montane rain forest

Alluvial and unconsolidated quaternary

Ridge

Upper slope

Lower slope

Plain

Ridge

Upper slope

Lower slope

Plain

Ultramafic igneous

Ridge

Upper slope

Lower slope

Plain

Ridge

Upper slope

Lower slope

Plain

Volcanic and volcanoclastic

Ridge

Upper slope

Lower slope

Plain

Ridge

Upper slope

Lower slope

Plain

Wetlands and depressions

Moist saline

Moist non-saline

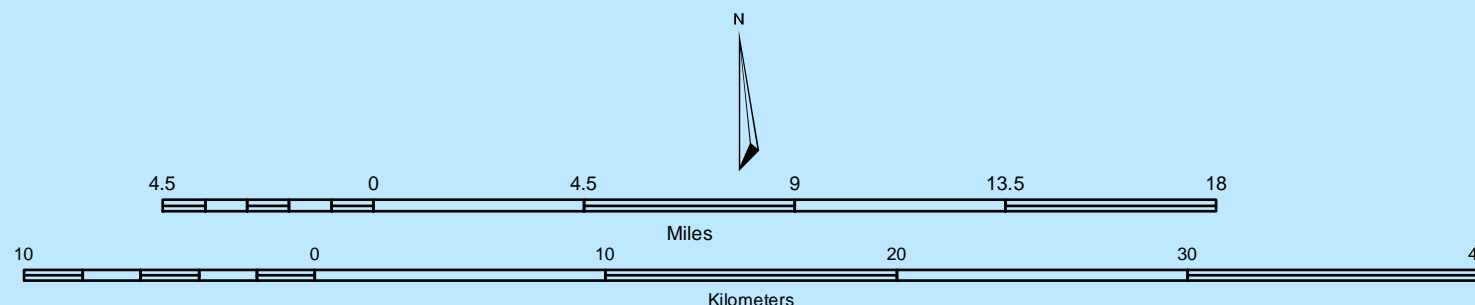
Dry saline

Dry non-saline

Lakes/Reservoirs

Rivers/Streams

Urban centers



SCALE: 1: 260 000

Lambert Conformal Conic Projection

North American Datum of 1983 (NAD 83)

References

Bawiec, W.J. 2001. Geology, Geochemistry, Geophysics, Mineral occurrences, and Mineral Resources Assessment for the Commonwealth of Puerto Rico. USGS Open file report 98-38.

Birkeland, P.W. 1984. Soils and geomorphology Oxford University Press, New York. 372 p.

Chapin III, F.-S.; Sturm, M.; Serreze, M.C.; McFadden, J.P.; Key, J.R.; Lloyd, A.H.; McGuire, A.D.; Rupp, T.S.; Lynch, A.H.; Schimel, J.P.; Beringer, J.; Chapman, W.L.; Epstein, H.E.; Euskirchen, E.S.; Hinzman, L.D.; Ju, G.; Ping, C.-L.; Tape, K.D.; Thompson, C.D.C.; Walker, D.A.; Welker, J.M. 2005. Role of land-surface changes in arctic summer warming. Science. 310: 657-660.

Ewel J.J.; Whitmore, J.L. 1973. The Ecological Life Zones of Puerto Rico and the U.S. Virgin Islands. U.S. Forest Service research paper ITF-18.

Figueroa-Colón J.C. 1996. Geoclimatic regions of Puerto Rico (map). U.S. Dept. Interior Geol. Surv. Water Res. Div. San Juan, PR.

Gould, W.A.; González, G.; Carrero Rivera, G. 2006. Structure and composition of vegetation along an elevational gradient in Puerto Rico. Journal of Vegetation Science. 17: 653-664.

Martinuzzi, S.; Gould, W.A.; Ramos-González, O.M.; Edwards, B. 2007. Development of a landform model for Puerto Rico and its application for land cover change analysis. Caribbean Journal of Sciences. 43:161-171.

USGS 2005. The National Hydrography Dataset (NHD). U.S. Geological Survey, Reston, Virginia.

Additional data sources

Climate (Holdridge lifezones): Modified from Ewel and Whitmore (1973).

Geology: The geology dataset was derived and generalized from the Geologic Terranes of Puerto Rico by Bawiec (2001).

Hydrography data set: The hydrography dataset was derived and generalized from The National Hydrography Dataset (NHD). The NHD was originated by the U.S. Geological Survey in cooperation with U.S. Environmental Protection Agency, USDA Forest Service, and other Federal, State and local partners. 2005. Reston, Virginia. This data set is presented as vector digital data generally developed at 1:24 000/1:12 000 scale.

Landforms: Gould, W.A.; Martinuzzi, S.; Jiménez, M.E.; Edwards, B.R.; Ramos-González, O.M. 2008. Topographic units of Puerto Rico. Scale 1: 260 000. IITF-RMAP-04. Rio Piedras, PR: US Department of Agriculture Forest Service, International Institute of Tropical Forestry.

Urban centers: This data set was developed by the GIS and Remote Sensing Lab of the International Institute of Tropical Forestry using visual interpretation of existing maps. Each point in the data set represents the approximate urban center for each municipality.

Suggested citation

Gould, W.A.; Jiménez, M.E.; Potts, G.S.; Quiñones, M.; Martinuzzi, S. 2008. Landscape units of Puerto Rico: Influence of climate, substrate, and topography. Scale 1: 260 000. IITF-RMAP-06. Rio Piedras, PR: US Department of Agriculture Forest Service, International Institute of Tropical Forestry.

Acknowledgements

This research was supported by the United States Geological Survey Biological Resources Division National Gap Program cooperative agreement No. 01HQPG0031 (01-IA-111201-002), the Puerto Rico GAP Analysis Program (PRGAP), the IITF GIS and Remote Sensing Laboratory and the USDA Forest Service International Institute of Tropical Forestry. Special thanks to reviewers for critical reviews of the map. This research was conducted in collaboration with the University of Puerto Rico.

Publication date: November 2008

USDA FS IITF, Jardín Botánico Sur, 1201 Calle Ceiba, Rio Piedras, PR 00926-1119, Puerto Rico.