



Analyzing cloud base at local and regional scales to understand tropical montane cloud forest vulnerability to climate change

Ashley E. Van Beusekom¹, Grizelle González¹, and Martha A. Scholl²

¹USDA Forest Service International Institute of Tropical Forestry, Jardín Botánico Sur, 1201 Calle Ceiba, Río Piedras, Puerto Rico 00926, USA

²US Geological Survey National Research Program, 12201 Sunrise Valley Drive, Reston, VA 20192, USA

Correspondence to: Ashley E. Van Beusekom (ashley.vanbeusekom@gmail.com, ashleyvanbeusekom@fs.fed.us)

Received: 23 December 2016 – Discussion started: 7 February 2017

Revised: 5 May 2017 – Accepted: 8 May 2017 – Published: 16 June 2017

Abstract. The degree to which cloud immersion provides water in addition to rainfall, suppresses transpiration, and sustains tropical montane cloud forests (TMCFs) during rainless periods is not well understood. Climate and land use changes represent a threat to these forests if cloud base altitude rises as a result of regional warming or deforestation. To establish a baseline for quantifying future changes in cloud base, we installed a ceilometer at 100 m altitude in the forest upwind of the TMCF that occupies an altitude range from ~600 m to the peaks at 1100 m in the Luquillo Mountains of eastern Puerto Rico. Airport Automated Surface Observing System (ASOS) ceilometer data, radiosonde data, and Cloud-Aerosol Lidar and Infrared Pathfinder Satellite Observation (CALIPSO) satellite data were obtained to investigate seasonal cloud base dynamics, altitude of the trade-wind inversion (TWI), and typical cloud thickness for the surrounding Caribbean region. Cloud base is rarely quantified near mountains, so these results represent a first look at seasonal and diurnal cloud base dynamics for the TMCF. From May 2013 to August 2016, cloud base was lowest during the midsummer dry season, and cloud bases were lower than the mountain-tops as often in the winter dry season as in the wet seasons. The lowest cloud bases most frequently occurred at higher elevation than 600 m, from 740 to 964 m. The Luquillo forest low cloud base altitudes were higher than six other sites in the Caribbean by ~200–600 m, highlighting the importance of site selection to measure topographic influence on cloud height. Proximity to the oceanic cloud system where shallow cumulus clouds are seasonally invariant in altitude and cover, along with local trade-wind orographic lifting and cloud formation, may explain the dry season low clouds. The results

indicate that climate change threats to low-elevation TMCFs are not limited to the dry season; changes in synoptic-scale weather patterns that increase frequency of drought periods during the wet seasons (periods of higher cloud base) may also impact ecosystem health.

1 Introduction

Mountains play a key role in collecting atmospheric moisture in tropical regions (Wohl et al., 2012). Around 500 tropical montane cloud forests (TMCFs) have been identified worldwide on mountains with frequent cloud cover; these can be at higher elevation (on larger mountains) which have lower temperatures or at lower elevation (on smaller mountains) which have more rainfall (Jarvis and Mulligan, 2011). The global set of TMCFs are almost all within 350 km of a coast and topographically exposed to higher-humidity air (Jarvis and Mulligan, 2011). Smaller mountains are likely to have clouds at lower elevations due to slightly higher adiabatic lapse rates (more temperature loss with the same elevation gain) than larger mountains, which undergo greater heating of the land mass (the mass-elevation effect: Foster, 2001; Jarvis and Mulligan, 2011). This effect and the higher humidity near the ocean support TMCFs on small coastal mountains.

Up to 60% of the moisture input to TMCFs is derived from cloud water interception from low clouds (Bruijnzeel et al., 2011), but this value varies greatly from forest to forest and within an individual forest. Cloud water has been deemed critical for the health of TMCFs, specifically for

the abundant epiphytes which require consistent moisture input from the atmosphere (Gotsch et al., 2015). Cloud water interception (including fog) adds moisture directly to the soil through the process of canopy interception and fog drip (Giambelluca et al., 2011), and indirectly alters the moisture budget through foliar uptake (Eller et al., 2013), lowering the saturation deficit of the atmosphere and suppressing transpiration (Alvarado-Barrientos et al., 2014). For the low-elevation TMCF of this study, it might be expected that, given a relatively constant seasonal temperature lapse rate (within $0.1\text{ }^{\circ}\text{C}/1000\text{ m}$ for each season using previous study data; Van Beusekom et al., 2015), wet seasons would have higher relative humidity caused by the larger amounts and spatial extent of rain events and therefore lower clouds. Yet, previous field-based studies at four different low-elevation TMCFs found that similar or higher absolute amounts of fog precipitation were deposited during dry season measurements than during wet-season measurements (Cavelier and Goldstein, 1989).

With their large energy inputs and fast rates of spatial and temporal change, tropical regions are some of the most dynamic atmospheric and hydrologic systems on Earth and thus may be significantly affected by climate change (Perez et al., 2016; Wohl et al., 2012). Regional cloud mass has been projected to decline with continued deforestation in maritime climates (van der Molen et al., 2006), and warming temperatures and urbanization could raise cloud base in the global set of TMCFs (Foster, 2001; Still et al., 1999; Williams et al., 2015), which could lead to some low-elevation TMCFs losing cloud immersion. In the Caribbean, the wet seasons are projected to be less wet by the end of the century (Karmalkar et al., 2013). Specifically, (1) shallow convection over Caribbean mountains in the early rain season may decrease if the trade winds continue to strengthen and shift direction, changing sea breeze dynamics and weakening orographic lift (Comarazamy and González, 2011); and (2) the regional late rain season may shorten due to strengthening of the Caribbean low-level jet (CLLJ; Taylor et al., 2013).

The goal of this study was to determine cloud base altitude and frequency of occurrence of low clouds during dry and wet seasons at a low-elevation tropical forest in the Luquillo Mountains, Puerto Rico, to establish a baseline against which to quantify future change. In addition, ceilometer, radiosonde, and satellite data for the northern Caribbean were analyzed to determine how the surrounding region influences the cloud patterns over ocean and land. Ceilometer data that are available to the research community are usually collected at airports, not in mountainous areas, and furthermore do not specifically quantify cloud frequency (Schulz et al., 2016). A dedicated ceilometer was installed to measure cloud base altitudes on the windward side of the mountains, at 100 m elevation and 7 km distance from the ridgeline at $\sim 1000\text{ m}$, and metrics were developed to quantify seasonal changes in base altitude and frequency of low, mountain-associated clouds. These metrics can also be used in the future to analyze temporal trends.

2 Study area

The Luquillo Experimental Forest (LEF) is located in the northern tropics at 18.3° N , 65.7° W . The LEF area is in the Luquillo Mountains on the eastern end of the island of Puerto Rico; these mountains are no more than about 13 km from the coastline (with the Atlantic Ocean to the north and east and the Caribbean Sea to the south). Maximum elevation is 1077 m. High rainfall causes steep, dissected slopes, and the ridges and stream valleys are covered by undeveloped tropical forest. Weather and clouds in the Luquillo Mountains follow patterns typical of the Caribbean region, which is dominated by the easterly trade winds (Malkus, 1955; Odum and Pigeon, 1970; Taylor and Alfaro, 2005). Annual trade winds are driven by an interplay of the North Atlantic Subtropical High (NASH) sea level pressure system and the Intertropical Convergence Zone (ITCZ) position (Giannini et al., 2000). In the northern hemisphere summer, the ITCZ moves to its northern position in the southwest Caribbean, weakening the trade winds and giving way to the progression of tropical easterly low-pressure waves, which help to create a Caribbean wet season from April or May through November (Gouirand et al., 2012). During winter the NASH extends westward, strengthening the trade winds and suppressing convection to create a cooler dry season from December through March (Gouirand et al., 2012). The CLLJ is a strengthening of the trade winds in June and July, separating the rain season into early and late with a warm drier season called the midsummer drought (Taylor et al., 2013). Trade-wind cumuli over the ocean are found within the trade-wind moist layer, limited above by the trade-wind inversion (TWI) and below by the lifting condensation level (LCL; Stevens, 2005). Intra-annual variation in oceanic cloud cover is dampened as an estimated two-thirds of the cloud cover comes from annually consistent clouds near the LCL; the other third is from seasonally changing clouds higher aloft (Nuijens et al., 2014). A pattern of lower clouds (bases and tops) over the ocean and higher clouds over the land, with a stronger diurnal effect of convection above land, has been observed in the tropics with Cloud-Aerosol Lidar and Infrared Pathfinder Satellite Observation (CALIPSO; Medeiros et al., 2010). However, with overpasses every 16 days, satellite data do not provide the level of temporal and spatial resolution required to effectively study the clouds at a TMCF (Costa-Surós et al., 2013). Satellite data in this study are used to generalize the ceilometer findings and quantify patterns of cloud top height and cloud thickness in the region.

Experiments and long-term monitoring in the Luquillo Mountains showed that orographic precipitation events occur consistently throughout the year (from the trade winds and thermal lifting over the mountains), providing 25 % of the rainfall by volume (Scholl and Murphy, 2014) as well as additional, unmeasured cloud water. Low clouds at the mountains have been hypothesized to originate with consistent winds carrying oceanic clouds to the mountains too

rapidly for dissipation (Raga et al., 2016), and additional condensation may occur with topographic lifting of moist air up the slopes. The cloud forest in the Luquillo Mountains has been reported from near 600 m where epiphytes first occur in abundance and trees are noticeably smaller (Bruijnzeel et al., 2011; Weaver and Gould, 2013); however, this elevation will vary with interactions between the topography and wind direction (e.g., the TMCF elevation range is almost certainly higher on the leeward slopes). It is possible the Luquillo Mountains may have already undergone cloud base lifting since the first field studies in 1963, when cloud immersion was observed at 500 m (Odum and Pigeon, 1970) and at 600 m as noted in Weaver (1995), but the evidence is anecdotal, and there were no cloud base measurements recorded over time. Seasonal patterns of clouds in the Luquillo TMCF were studied with synoptic weather observations (Malkus, 1955; Odum and Pigeon, 1970), and more recently there have been summer cloud water deposition measurements (Eugster et al., 2006; Holwerda et al., 2011). Cloud base height data have been collected in the region by satellites and airport stations in addition to the newer data collected by this study nearer to the TMCF. These data types will be discussed extensively in the next section, and a map of locations can be seen in Fig. 4a.

3 Methods

3.1 Ceilometer and weather station data in the Luquillo Experimental Forest

A Vaisala CL31 laser ceilometer was installed at 100 m elevation 7 km northeast of the northwest-trending ridgeline that connects two of the higher peaks of the Luquillo Mountains. The ceilometer collected data at 30 s intervals from 29 April 2013 through 1 August 2016. Ceilometer data used in this study were the altitudes of the lowest cloud layer at a point above the instrument; the cloud layer base is the bottom of a vertically continuous layer at least 100 m thick with no vertical visibility (defined according to a 5 % contrast threshold; <http://www.vaisala.com>). The mean and median cloud base values that are usually calculated from ceilometer data are not sufficient to answer our questions about the frequency of clouds immersing the relatively low-elevation forested mountains, because data from a point source include numerous clear-sky and high cloud base observations. Therefore we developed metrics to summarize the cloud base altitude data in ways that could express differences and changes temporally (as well as spatially if the same metrics were calculated elsewhere) in cloud base for altitude range of interest in the TMCF; the forest is affected by clouds in the elevations from ~ 600 to 1077 m (Weaver, 1995). The metrics were derived from the frequency distributions of all cloud base measurements, where clear sky was considered an infinite cloud altitude in the computations and clouds that may have been

present below the elevation of the ceilometer (100 m) were not recorded. The more traditional metric of “average” would not be able to account for clear-sky observations. For example, if a day had one cloud in the 24 h period, and it had a base of 200 m, the daily average would be 200 m. However, a day with half the cloud bases at 200 m and half at 2000 m would have a daily average cloud base of 1100 m, which is higher than the 1st day even though the 2nd day had more clouds that would affect the TMCF. We did not trim the data to the altitude of interest; using all data gave a more complete picture of the cloud patterns of the troposphere above the site.

The specific quantiles used for cloud base metrics were chosen such that hourly metric values were between 600 and 1077 m for a majority of the hours in each season and daily metric values were between 600 and 1077 m for a majority of the days in each season. In this way, the metrics can be applied to help quantify the ecosystem characteristic low-elevation cloud amount needed to sustain the forest throughout the hour, day, and season. The metric “hourly low cloud base” was defined as the altitude marking the first quartile (Q_1) of the frequency distribution of the 120 measurements in each hour. The metric “daily low cloud base” was defined at the daily first tertile (T_1) of the distribution of Q_1 altitudes from each hour, meaning the low cloud base metric was at or below that altitude for 8 h (not necessarily consecutive) in the 24 h day. The metric “hourly minimum cloud base” was defined as the single-value altitude of the lowest cloud base detected during each hour. The metric “daily minimum cloud base” was defined as the daily seventh octile (O_7) of the distribution of minimum values for each hour, meaning the minimum cloud base was at or below that altitude for 21 h in the day. The daily low metric represents the cloud base altitude that is often observed in the portion of the day with the lowest clouds, whereas the daily minimum metric represents the altitude where the lowest cloud base is found at throughout most of the day. For comparison with regional Automated Surface Observing System (ASOS) data, the standard hourly average cloud bases and average cloud bases (omitting clear-sky data points) were also calculated at our LEF site. Hourly cloud cover was computed as the fraction of positive cloud base detections, at any altitude, that occurred in the 120 instrument measurements per hour. An example of these calculations in practice and more information on the design of the metrics for this study and for other potential studies is given in the Supplement.

Hourly rainfall, relative humidity (RH), temperature, wind speed, and wind direction data were collected at several weather stations around the TMCF within an 8 km² area of the forest for differing periods of record (PORs; Table 1). High hourly correlations were observed between these parameters across the forest stations for periods of overlap, giving confidence that patterns between the set of weather variables at each station in the immediate vicinity of the ceilometer measurements were homogeneous, although of differing

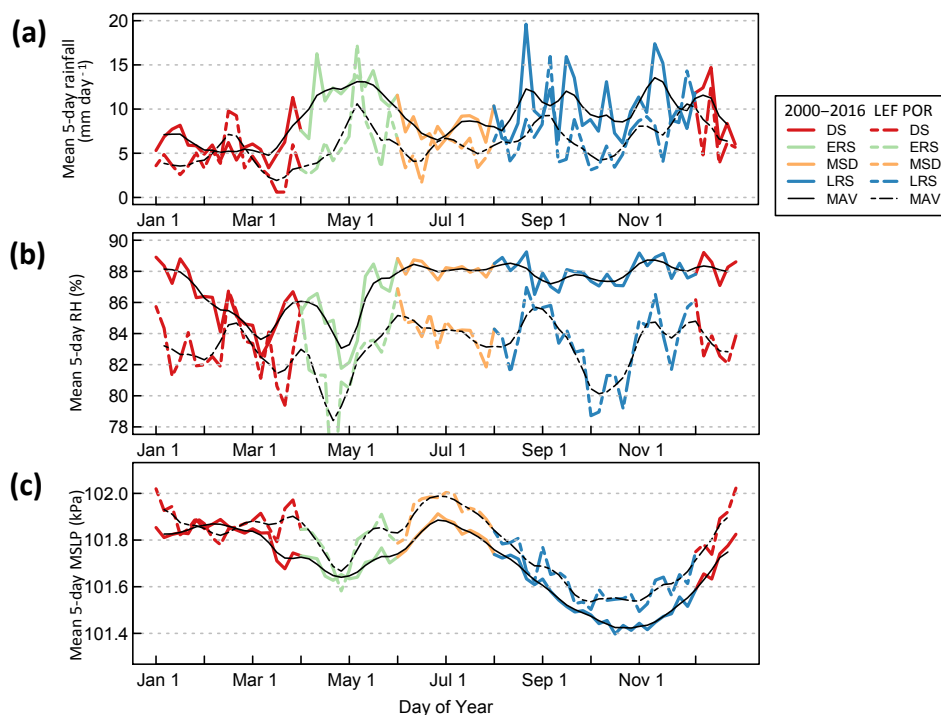


Figure 1. Day of year mean values for (a) precipitation at 361 m, (b) relative humidity (RH) at 361 m, and (c) mean sea level pressure (MSLP) at 100 m in the Luquillo Experimental Forest (LEF) sites. The colors show the 5-day means during the winter dry season (DS), early rain season (ERS), midsummer dry season (MSD), and late rain season (LRS). The black line is the 15-day moving average (MAV), with the 2000–2016 period as solid lines and the LEF ceilometer period of record (LEF POR) of May 2013 through August 2016 as dashed lines.

magnitude at the different stations (Van Beusekom et al., 2015). Thus we used the weather data from the one station with the most complete and longest POR (Bisley at 361 m; Table 1). Mean sea level pressure (MSLP) was only collected near the TCMF at 100 m. Its relatively short record was highly correlated with the MSLP at the ASOS station TJNR, Ceiba (correlation coefficient $\rho = 0.98$), so the record was filled with data from Ceiba. The rainfall and RH data at 361 m and the MSLP at 100 m (missing values filled with data from Ceiba) were representative of seasonal patterns in the Luquillo Mountains and were used to interpret the ceilometer data by season locally and regionally.

The 2000–2016 MSLP showed higher pressure in the dry seasons and lower pressure in the wet seasons (Fig. 1c), exemplifying the regional seasonal patterns that originate with the NASH and CLLJ (Brueck et al., 2014; Taylor et al., 2013). However, interannual variability in the timing of seasons from climate oscillations (North Atlantic, Pacific Decadal, and El Niño–Southern Oscillation) was observed in averages made over the shorter record (Gouirand et al., 2012). Rainfall, RH, and MSLP months of 1–15 April (M4.5), October (M10), and December (M12) in the LEF ceilometer period of record (LEF POR, May 2013 through August 2016) were not representative of the longer period 2000–2016 (Fig. 1). Because we have a short period of record

for the ceilometer data (~ 3 years) and we focused on average seasonal behavior in this initial study, we chose to omit the unrepresentative time periods noted above and only used the time periods representative of the longer-term seasonal average (~ 17 years). As the ceilometer record gets longer, we will be better able to investigate effects of the large-scale climate oscillations on clouds at the site.

All correlations between variables were computed as Pearson product-moment correlations with coefficient ρ measuring linear correlation. Strengths of correlations were based on the relationships between weather parameters and clouds found in this study and another Caribbean cloud and weather study (Brueck et al., 2014); the correlation was assumed fair if $0.3 < |\rho| < 0.4$, good if $0.4 < |\rho| < 0.6$, and very good if $|\rho| > 0.6$.

3.2 Ceilometer and weather station data at airports

The ASOS data for six airport stations in the northern Caribbean from 2000 to 2016 were accessed from the Iowa Environmental Mesonet (Table 1), which includes average hourly cloud base when clouds exist, cloud cover as a percentage of the sky, and observed weather variables. No 30 s data were available, and all data have been summarized to the mean hour before reporting, thus not specifically quantifying cloud frequency. The ASOS network reports using

Table 1. Data record information.

Station	Lat (° N)	Long (° W)	Elev (m)	Land cover	Variables ^c	Period used	Data missing	Data reference
Sabana ^b	18.32	65.73	100	Forest	RF, RH, MSLP, T, WD, WS	May 2013–Aug 2016	5 %	https://doi.org/10.2737/IRDS-2017-0023
Bisley LEF ^a	18.30	65.75	361	Forest	RF, RH, T, WD, WS	Jan 2000–Aug 2016	3 %	https://doi.org/10.2737/IRDS-2017-0023
Icaeos LEF ^a	18.28	65.79	645	TMCF	RF	Jan 2000–Jan 2016	7 %	50075000 http://waterdata.usgs.gov/nwis
Santo Domingo ^b	18.43	69.67	18	Airport	RH, T, WD, WS, S	Jan 2000–Aug 2016	28 %	MDSO http://mesonet.agron.iastate.edu
Aguadilla ^b	18.49	67.13	72	Airport	RH, T, WD, WS	Jan 2000–Aug 2016	35 %	TJBQ http://mesonet.agron.iastate.edu
San Juan ^b	18.43	66.01	3	Airport	RF, RH, MSLP, T, WD, WS, S	Jan 2000–Aug 2016	1 %	TJSJ http://mesonet.agron.iastate.edu
Ceiba ^b	18.26	65.64	12	Airport	RF, RH, MSLP, T, WD, WS	Jan 2000–Aug 2016	37 %	TJNR http://mesonet.agron.iastate.edu
St. Thomas ^b	18.34	64.97	7	Airport	RF, RH, MSLP, T, WD, WS	Jan 2000–Aug 2016	6 %	TIST http://mesonet.agron.iastate.edu
Sint Maarten ^b	18.04	63.11	4	Airport	RH, T, WD, WS, S	Jan 2000–Aug 2016	7 %	TISM http://mesonet.agron.iastate.edu
CALIPSO tracks ^a	17.5–20	62.5–70	vary	Various	Cloud vertical profiles	Jun 2006–Aug 2016	0.05 %	http://www-calipso.larc.nasa.gov

^a In Luquillo Experimental Forest (LEF). ^b Cloud data collected at these stations. ^c Key to abbreviations: RF = rainfall, RH = relative humidity, MSLP = mean sea level pressure, T = temperature, WD = wind direction, WS = wind speed, S = radiosonde.

a range of oktas (okta = 1/8 of the sky) covered by cloud (Nadolski, 1998): “clear” for 0, “few” for 1/8–2/8, “scattered” for 3/8–4/8, “broken” for 5/8–7/8, and “overcast” for 8/8. These numbers are automatically calculated by the instrument from 30 s detections similar to our calculations for the LEF site (Nadolski, 1998). For calculation of average POR cloud cover in this study, the cover categories were converted to sky cover fraction using the middle of the range or 0 for “clear”, 0.125 for “few”, 0.375 for “scattered”, 0.75 for “broken”, and 1 for “overcast”.

To characterize variations in the cloud system of the region, metrics were again developed to summarize the hourly average cloud base data at the ASOS and LEF stations in ways that expressed the changes in seasonal altitudes of clouds at altitudes meaningful for heights in the TMCF. The metric “daily minimum mean-hour cloud base” was defined as the minimum value each day of the hourly averages, and similarly the metric “daily maximum mean-hour cloud base” was defined as the maximum of the hourly averages. The metric “daily low mean-hour cloud base” was defined as the daily Q_1 of the hourly averages. To characterize the cloud system at large, mean hourly cloud cover (in fraction of sky) was also calculated.

In order to represent usual atmospheric conditions, bearing in mind the data were mean hours of existing cloud bases and not representing clear conditions that may have been present during the hour, hourly average cloud base was considered clear sky (in calculation of the daily metrics) if the cloud cover fraction was less than 50 % of a station’s POR mean cloud cover. POR mean cloud cover was a 0.6 fraction of the sky at the LEF station (foothills) but a 0.2–0.3 fraction of the sky at the ASOS stations (airports). Under this condition, ~ 2 % of the data at each station were removed before calculation of “usual” conditions.

3.3 Radiosonde data at airports

Two to three times daily, radiosonde profiles were available for 2000–2016 at Santo Domingo, San Juan, and Sint Maarten from the Integrated Global Radiosonde Archive (Durre et al., 2009). We expected to find cloud base altitudes above the LCL and cloud tops at or below the TWI for trade-wind conditions (Brueck et al., 2014; Malkus, 1955); thus, we used the radiosonde profiles to compute values of minimum LCL and maximum TWI base over each day to quantify frequency of stable marine boundary layers and trade-wind cloud conditions at the site (Rastogi et al., 2016; Zhang et al., 2012). The LCL calculation we used involves an air parcel representing the mean potential energy in the lowest 50 hPa of the atmosphere for a mean-layer LCL; this accounts for the fact that the thermodynamic profile of the boundary layer may not be well represented by that of the surface layer (Craven et al., 2002; for details see Appendix A). The TWI calculation used the method of Cao et al. (2007) with the

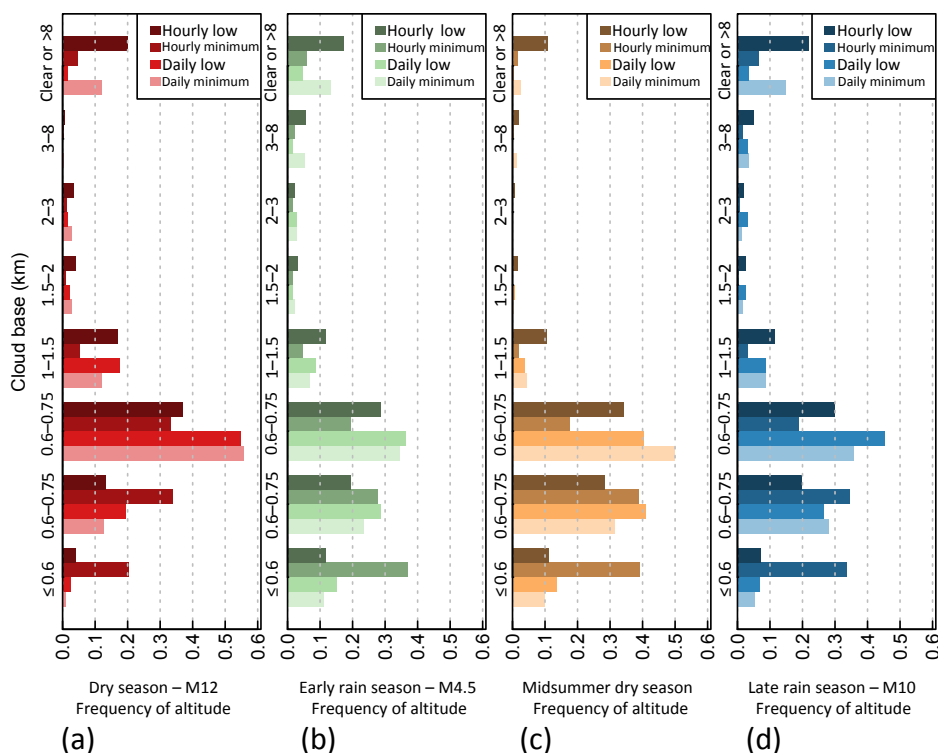


Figure 2. Frequency of low cloud base by season excluding non-representative months in each year from the Luquillo Experimental Forest ceilometer, May 2013 through August 2016: **(a)** dry season without the month of December (M12); **(b)** early rain season without 1–15 April (M4.5); **(c)** midsummer dry season; **(d)** late rain season without October (M10). The metrics are hourly low cloud base (first quartile, Q_1 , of each hour of 30 s cloud base altitudes), hourly minimum value, daily low value (first tertile, T_1 , of the hourly low set), and daily minimum value (seventh octile, O_7 , of the hourly minimum set).

published pressure bounds for the Atlantic (Augstein et al., 1974; for details see Appendix A).

3.4 Satellite data

CALIPSO satellite vertical feature mask data (Winker et al., 2009) from the period 2006–2016 were analyzed for information on cloud tops and cloud thickness in the region. There are 10 tracks in the region considered (Fig. 4a, Table 1); the northwest/southeast-trending tracks are on the daytime orbit and the other direction on the nighttime orbit. Tracks are repeated at a 16-day interval, and each satellite overpass records whether a cloud was detected in 300 m horizontal by 30 m vertical cells up to 8.2 km altitude (data extend up to 30 km, but we do not discuss those here). Data were summarized by fraction of measurements with cloud detections in larger cells of 0.05° latitude (approximately 6 km) with 30 m vertical resolution, as well as mean and Q_1 altitudes of the top and base of the lowest cloud layer over land and water, considering all regional tracks. None of the tracks went directly over the study site. As with the ceilometer metrics, the Q_1 altitudes summarize the low cloud frequency behavior in a way that can express differences and changes temporally as well as spatially. Approximately 10 % of the vertical profiles

had uncertainty in the cloud base as the lidar was completely attenuated below a cell of cloud (because the cloud was too thick optically; Winker et al., 2009). For these profiles, low cloud base altitude was set minimally as the altitude of the land or water surface and maximally as the lowest cell vertically where a cloud was observed, before complete lidar attenuation; this results in a range reported for the low cloud base altitude and layer thickness.

4 Results

4.1 Ceilometer and weather station results in the Luquillo Experimental Forest

The data suggest that the TMCF has a greater probability of cloud interaction during the midsummer dry season throughout the elevation range of the forest between 600 and 1000 m and during the winter dry season at the upper elevational reaches (< 1000 m) than it does in the wet seasons (Figs. 2, 3a). Of all the seasons, the midsummer dry season (Figs. 2c, 3a) had low and minimum cloud bases at 600–750 m most consistently. The cloud base levels in the winter dry season (Fig. 2a) were not below 750 m as often as in the wet seasons,

Table 2. Correlations coefficients ρ of relative humidity (RH), mean sea level pressure (MSLP), and cloud cover with cloud base altitude metrics and rainfall in the Luquillo Experimental Forest.

Variable	Cloud base altitude					
	Daily low (daily T_1 of Q_1 of each hour)		Daily minimum (daily O_7 of min of each hour)		Rainfall	
	5-day ρ	Month ρ	5-day ρ	Month ρ	5-day ρ	Month ρ
RH	−0.37***	−0.41***	−0.38***	−0.38**	0.13***	<i>0.05</i>
MSLP	−0.46***	−0.64***	−0.53***	−0.62***	−0.30***	−0.46***
Cloud cover	−0.68***	−0.76***	−0.71***	−0.76***	0.26***	<i>0.21</i>

Significant relationships are indicated as follows: * p -value < 0.1, ** p -value < 0.05, *** p -value < 0.01. Insignificant relationships are *italicized*.

but they were also absent above 3000 m, so, on an hourly and daily basis, the low and minimum cloud bases were below 1000 m more consistently in the dry than in the wet seasons (summing the bars in Fig. 2). During the daytime hours (09:00–18:00) the median hourly low cloud bases were as low or lower in altitude in the dry seasons as the wet seasons (Fig. 3a); this was also the time of day when rainfall was the least frequent in the dry seasons (Fig. 3b). The means of median hourly low and minimum cloud bases over the entire POR (the data shown in Fig. 3a) were 965 and 740 m, respectively.

Of all available weather variables, the daily low and minimum cloud bases correlated best with RH and MSLP (negative correlations, Table 2, Fig. 1a, c). Interestingly, RH did not correlate well with rainfall (Table 2) or with pressure indicators of wet and dry seasons (visually confirmed in Fig. 1b).

4.2 Ceilometer and weather station data at airports

In the northern Caribbean region, the mean low cloud base was lower during the midsummer dry season than during the other seasons at all of the stations, indicating seasonal variation (Fig. 4c). However, the longer winter dry season had a higher low cloud base than the wet seasons (Fig. 4b), except at the LEF station (the station in the Luquillo foothills; note that at this station in Fig. 4b, less frequent winter dry season high clouds, see Fig. 1, lower the mean-hour cloud base). Cloud cover percentage was highest in the midsummer dry season relative to the other seasons at all the stations to the east (windward) and including the LEF station, and winter dry season cloud cover was similar to or higher than the wet seasons (Fig. 4d). The low and minimum cloud bases for stations near the Luquillo Mountains correlated much better with cloud cover than at the stations as a whole, with very good negative correlation at the LEF station itself (Tables 2, S3).

In contrast to the LEF area (Fig. 1b) the regional pattern of RH for 2000–2016 was as expected, with lower RH during the dry seasons than the wet seasons (Fig. 5), and the low and minimum cloud bases all had fair correlation with the

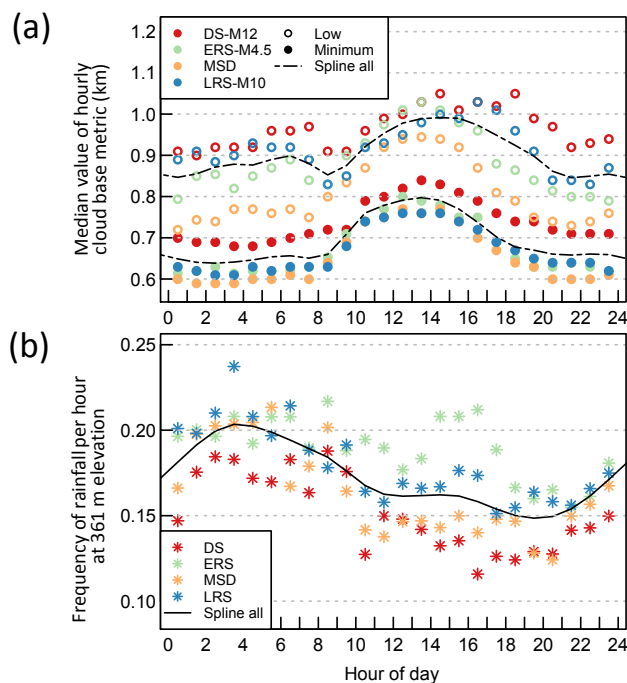


Figure 3. Summaries by hour of day for each season: (a) median altitude of hourly low cloud bases and median altitude of hourly minimum cloud bases from the Luquillo Experimental Forest ceilometer, May 2013 through August 2016, for the winter dry season without the month of December (DS–M12), the early rain season without 1–15 April (ERS–M4.5), the midsummer dry season (MSD), and the late rain season without October (LRS–M10); (b) frequency measurable rainfall occurred in each hour of the day for 2000–2016 for the Bisley station at 361 m elevation during the seasons without excluded months. Colored symbols are seasonal values and black lines are the cubic smoothing splines of all data in the ceilometer period of record.

RH measurements (Table 3). Regionally, no metrics of daily clouds correlated with MSLP except at the LEF site, where the low and maximum cloud bases had good and very good correlation with MSLP, respectively (Table 3). The regional means and correlations were also computed over the shorter

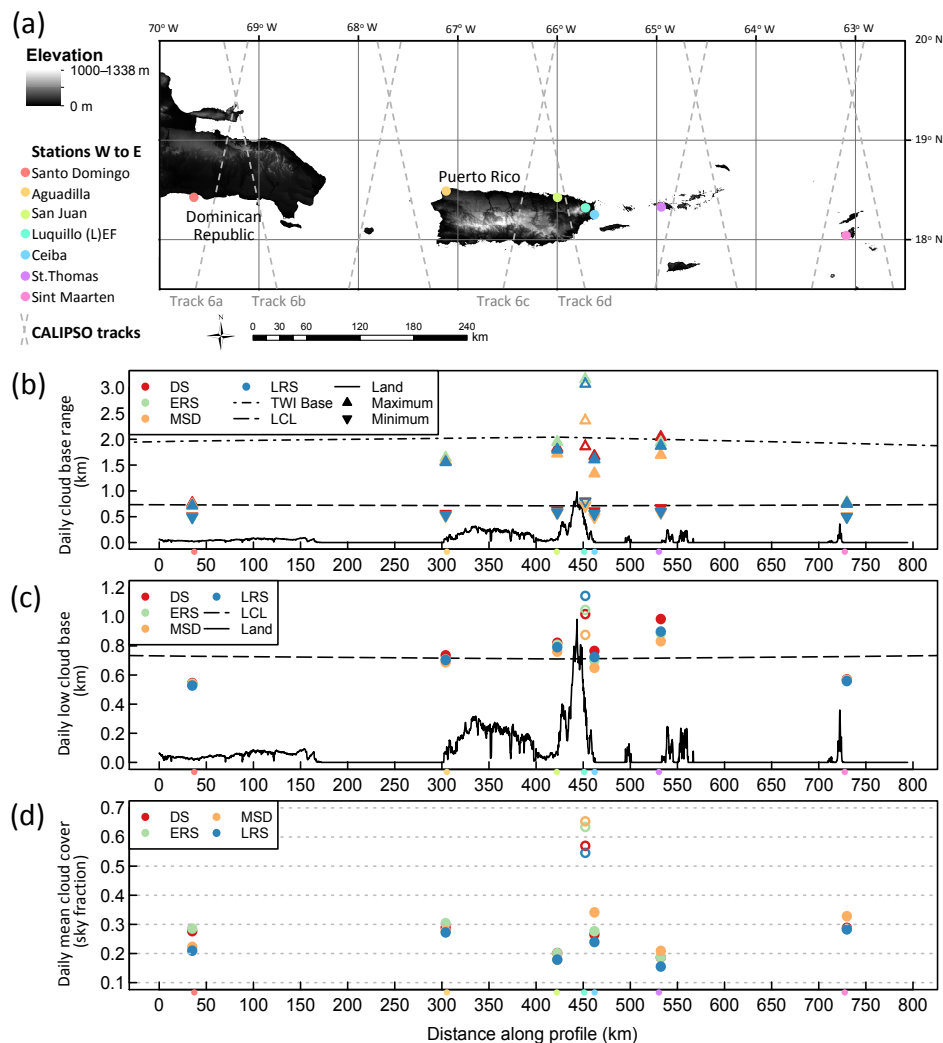


Figure 4. Daily “usual” mean clouds averaged over the winter dry season (DS), early rain season (ERS), midsummer dry season (MSD), and late rain season (LRS) for the period of record (POR) across the region: (a) locations of airport (ASOS) stations, Luquillo Experimental Forest (LEF) station, and CALIPSO satellite tracks, along with topography; (b) daily minimum and maximum cloud bases (of hourly means), splined lines of trade-wind inversion (TWI) base and lifting condensation level (LCL) based on three geographical calculations, and land surface elevation along profile; (c) daily low cloud base (first quartile, Q_1 , of hourly means), estimated LCL, and land surface elevation along profile; (d) daily mean cloud cover as fraction of sky. The land surface profile trends due east and west (shifting north and south to be near the stations). Station locations are marked with circles on the x axis in the same colors as (a). Dashed colored lines between San Juan and Ceiba are used to indicate that the LEF station measurements are only based on the available LEF POR, May 2013–August 2016, excluding non-representative months for all of 2000–2016. “Usual” is defined as hours with cloud cover at least 50 % of mean-POR cloud cover for station.

LEF POR with exclusion of the non-representative months. These were not substantially different than the 2000–2016 results presented here (in Figs. 4 and 5, Table 3), but the mathematical strength of the resulting means and significance of the correlations necessarily decreased with less data.

4.3 Radiosonde data at airports

Over the North Caribbean regional ceilometers excluding the LEF site, the maximum cloud base altitudes were below the

TWI and the lowest near the mean-layer lifting condensation level (MLLCL; both calculated from 2000–2016 radiosonde profiles, Fig. 4b). The TWI was distinguishable 86 % of the time in the winter dry season, 74 % in the midsummer dry season, 71 % in the early rain season, and 65 % in the late rain season. The averages of maximum daily TWI values were 1921 m for Santo Domingo, 2141 m for San Juan, and 1851 m for Sint Maarten, with average seasonal standard deviation of ± 48 m and the lowest TWI altitudes in the midsummer dry season. This agrees with other research on global

Table 3. Correlation coefficients ρ of relative humidity (RH), mean sea level pressure (MSLP), and cloud cover with cloud base altitude metrics and rainfall region wide.

Variable	Station	Cloud base altitude						Rainfall	
		Daily low mean hour (Q_1 of usual hourly means)		Daily minimum mean hour (min of usual hourly means)		Daily maximum mean hour (max of usual hourly means)		5-day ρ	Month ρ
		5-day ρ	Month ρ	5-day ρ	Month ρ	5-day ρ	Month ρ		
RH	ASOS all ^a	-0.35***	-0.30***	-0.36**	-0.26	-0.06	-0.17	NA	NA
	ASOS near ^b	-0.36***	-0.29***	-0.47***	-0.33	-0.01	-0.08	0.22***	0.17*
	LEF ^c	-0.25***	-0.23	-0.40***	-0.40***	0.04	-0.01	0.13***	0.05
MSLP	ASOS all ^a	NA	NA	NA	NA	NA	NA	NA	NA
	ASOS near ^b	0.04	0.01	0.17***	0.14*	-0.10*	-0.08	-0.27***	-0.42***
	LEF ^c	-0.41***	-0.65***	-0.17***	-0.29*	-0.46***	-0.58***	-0.30***	-0.46***
Cloud cover	ASOS all ^a	-0.21**	-0.18	-0.18***	-0.08	0.02	0.01	NA	NA
	ASOS near ^b	-0.30***	-0.42***	-0.27***	-0.28***	-0.03***	-0.14	-0.01	-0.10
	LEF ^c	-0.46***	-0.74***	-0.49***	-0.81***	-0.01	-0.31*	0.26***	0.21

Significant relationships are indicated as follows: * p -value < 0.1, ** p -value < 0.05, *** p -value < 0.01. Insignificant relationships are italicized.

^a Mean of ρ from all six airport (ASOS) stations for 2000–2015. ^b Mean of ρ from three airport (ASOS) stations nearest to Luquillo for 2000–2015: San Juan, Ceiba, St. Thomas. ^c ρ from Luquillo Experimental Forest (LEF) stations May 2013–December 2015. “Usual” is defined as hours with cloud cover at least 50 % of mean-POR cloud cover for station.

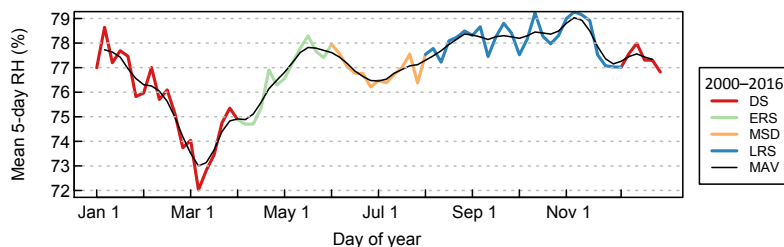


Figure 5. Day of year mean values for relative humidity (RH) averaged over all six regional airport stations (ASOS, does not include Luquillo Experimental Forest data). The colors show the 5-day means during the winter dry season (DS), early rain season (ERS), midsummer dry season (MSD), and late rain season (LRS). The black line is the 15-day moving average (MAV) for the 2000–2016 period.

distribution and seasonal variance (Guo et al., 2011), and the influence of local topography (Carrillo et al., 2015), on the TWI. The averages of minimum daily MLLCL values were 538 m for Santo Domingo and 557 m for San Juan, with average seasonal standard deviation of ± 27 m and the lowest values in the midsummer dry season. At Sint Maarten, the POR-ceilometer-observed mean daily minimum cloud base was 202 m lower than the calculated minimum daily average MLLCL of 705 m, whereas at Santo Domingo and San Juan the difference was 37 m lower and 34 m higher, respectively. Consequently, we assumed the radiosonde measurements were not representative of conditions above the ceilometer location at Sint Maarten, and these data were not used in the regional comparison.

4.4 Satellite data

CALIPSO data from 10 tracks over the northern Caribbean (Fig. 4a) showed that land with high topography increased the likelihood of clouds in a layer from land surface elevation up to 2 km. The 2 km altitude is approximately the level of the TWI, which under most conditions caps the trade-wind

cumuli (Fig. 6). Oceanic clouds were most likely to be found in a layer from 400 m to 1 km. Lidar attenuation causes uncertainty in the cloud base identification for the thickest 10 % of clouds, as discussed earlier. For the lowest cloud layer below 8.2 km on all 10 tracks, only considering when clouds are present, the mean altitude of the base of the layer ranged from 659–1385 m over ocean and 796–1155 m over land, and the mean altitude of the top of the layer was 2167 m over ocean and 2034 m over land. This indicated a similar cloud layer altitude over ocean and land; most land in the tracks was low topography, so this is not unexpected. However, considering all data (i.e., clear sky has infinite cloud base and top altitude), the Q_1 altitude range (from uncertainty due to lidar attenuation) of the base of the layer was 235–475 m over ocean and 25–355 m over land, and the Q_1 altitude of the top was 1165 m over ocean and 1315 m over land. Thus, there were possibly more low-altitude cloud base observations over land, depending on where in the range the cloud base actually existed. Highest topography land (Fig. 6c) exhibited an upper limit of the cloud layer around 2 km; however, lower topography land had thicker clouds than over ocean. The mean layer thickness was 442–853 m over ocean

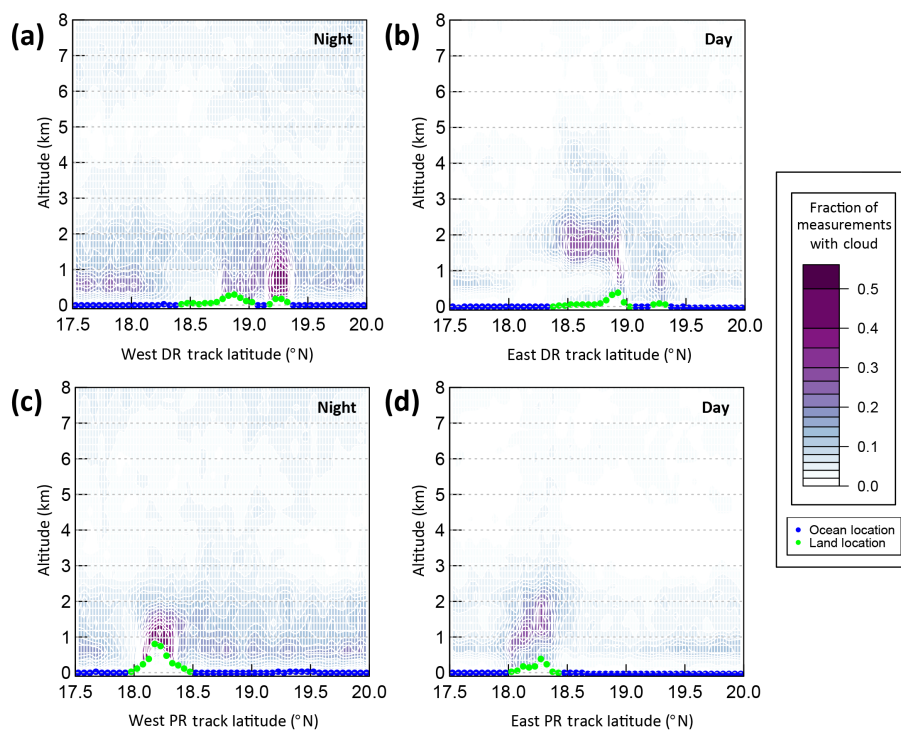


Figure 6. CALIPSO satellite data fraction of measurements with cloud recorded in cell, for the years 2006–2016, with cell at 0.05° latitude along track and 30 m altitude for the (a) west Dominican Republic (DR) track (night orbit), (b) east DR track (day orbit); (c) west Puerto Rico (PR) track (night orbit); and (d) east PR track (day orbit). Since track measurement location varies slightly, surface point (land or ocean) is plotted as the mean location. Cell fractions are spline-smoothed into a surface. Tracks are marked on Fig. 4a.

and 582–818 m over land. Thicker clouds with more low bases occurring over land have also been found in previous studies looking at ocean and low topography land at different locations and in larger regions (Medeiros et al., 2010; Rauber et al., 2007).

5 Discussion and conclusions

Caribbean trade-wind cumulus clouds have been observed in other studies to be relatively shallow and originating with bases near the LCL (Malkus, 1955; Nuijens et al., 2014; Rauber et al., 2007; Zhang et al., 2012). The regional ASOS and CALIPSO data in this study support the previous findings, with most oceanic cloud bases at or within 100 m of the LCL (Figs. 4 and 6). Both 5-day and monthly correlations between low clouds and RH were observed region wide (Table 3). It has been theorized that a stronger TWI increases oceanic cloud cover and lowers the cloud base, and cloud amounts reflect the upstream boundary-layer atmospheric conditions (Myers and Norris, 2013; Stevens, 2005). The Luquillo Mountains are ~ 10 km from the coast, and trade-wind velocity in the region is typically $3\text{--}5\text{ m s}^{-1}$ (Lawton et al., 2001). Existing clouds are over land for about 30 min before reaching the TMCF, and orographic lifting may generate additional condensation during parts of the daily cy-

cle. We postulate that proximity of the TMCF to the coast is an ecological advantage in that the forest has adapted to the oceanic atmosphere (relatively invariant humidity, temperature profile, and cloud cover). The Caribbean ASOS stations east (windward) of Puerto Rico on small, low-relief islands may be influenced by the thermodynamically stable marine boundary-layer TWI and reflect conditions closer to those over the ocean surface than to those on land. These stations have higher cloud cover in the dry seasons (Fig. 3d) and lower clouds correlating with increasing cloud cover (Table 3); remnants of this weather pattern may be persisting on to the land in eastern Puerto Rico (Raga et al., 2016).

However, our results clearly show the changes that occur when the clouds interact with land that extends above the LCL in a trade-wind regime: cloud base altitude and cloud cover over the mountains was increased compared to that over small low-relief islands or open ocean (Figs. 4 and 6). In addition, the cloud base over land rises high enough that a TWI limit to vertical extent of the clouds may result in shallower (thinner) cloud layers at the highest land elevations (Fig. 6; Rastogi et al., 2016). When topography is close to the ocean this effect is especially pronounced, as seen in the CALIPSO data with the disproportionate effect on the clouds by the lower peak elevation but closer oceanic proximity of the northernmost peninsula of the Dominican Re-

public (Fig. 6a, b). The local ceilometer data showed that the correlation of daily low and minimum cloud base metrics with RH was primarily driven by cloud bases lower than 1000 m in the calculations, and correlation of these metrics with MSLP was primarily driven by cloud bases higher than 1500 m in the calculations (Table 2). In addition, the relatively high RH during the dry seasons in the mountains is a pattern that is not seen over the low-relief sites (Figs. 1b, 5) highlighting the importance of site-specific measurements of parameters that influence cloud base for TMCFs, rather than relying on data from regional stations at airports.

The Caribbean region is projected to undergo drying in the future, with various mechanisms that will suppress deep convection and affect the frequency of high rainfall (Karmalkar et al., 2013). Low peak-elevation TMCFs are especially vulnerable in a changing climate, because slight increases in cloud base altitude could end cloud immersion for the entire forest (Foster, 2001; Lawton et al., 2001; Ray et al., 2006). With our results, we question the likelihood of frequent cloud base at 600 m at the Luquillo Mountains (Figs. 2, 3), the published TMCF lowest elevation based on older observations of cloud immersion (Odum and Pigeon, 1970; Weaver, 1995), and observed changes to smaller trees which dominate cloud forests (Weaver and Gould, 2013). It is possible that such characteristic vegetation may persist for some time after changing climatic conditions have lifted the cloud base (Oliveira et al., 2014; Richardson et al., 2003). Rainfall and relative humidity in the forest are currently quite high so that some species, once established, may be able to survive if rainfall remains high (Martin et al., 2011), but the diversity and numbers of epiphytes and other species that depend on cloud immersion might decline over time. During a past wet-season drought in the Luquillo Mountains, trade-wind precipitation became very important in the absence of deep convection (Clark et al., 2017). If trade-wind cloud layers become thinner and shallow convection weakens, drought effects on the TMCF could be even more significant.

This study presents evidence that cloud levels in the dry season are consistently as low or lower than in the wet seasons at a low-elevation TMCF under the current climate regime, indicating that the TMCF ecosystem may be more vulnerable to wet-season drought periods than was previously assumed. We calculated the mean MLLCL at 557 m and mean TWI of 2141 m from San Juan airport radiosonde data, identifying the local trade-wind cloud layer near Puerto Rico. While previous studies report the forest clouds to start at 600 m, our ceilometer observations over the forest at about 7 km windward of the TMCF showed the lowest cloud bases most frequently occurred at higher elevation, from 702 to 915 m. Continued long-term measurements at the Luquillo Mountains, and comparisons to other low-elevation TMCFs, are needed to expand the low cloud pattern temporally and geographically with full confidence and to determine how projected changes in regional temperature and atmospheric circulation patterns will affect these cloud-water-dependent ecosystems.

Data availability. The Luquillo Experimental Forest ceilometer and weather station data are hosted on the USDA Forest Service Research Data Archive at <https://doi.org/10.2737/RDS-2017-0023> (González, 2017).

Appendix A

This Appendix includes further detail on the calculation of the lifting condensation level (LCL) and the trade-wind inversion (TWI).

The LCL is the altitude at which a parcel of air lifts adiabatically and cools to the temperature where its relative humidity is 100%. Assuming the presence of cloud condensation nuclei, condensation of water vapor into liquid water cloud droplets is possible at and above this altitude. If the boundary layer is well mixed, the layer will have a constant potential temperature and a constant mixing ratio, and air parcel parameters at any altitude can be used to calculate the LCL; these weather parameters are most often measured at the land surface. However, the mean-layer LCL has been shown to be a more accurate descriptor of the lower boundary of cloud development than the surface-parcel-based LCL (Craven et al., 2002). An MLLCL was determined from each radiosonde profile by first splining the temperature, dewpoint temperature, and pressure measurements into 5 hPa levels and calculating potential temperature and water vapor mixing ratio at each level (following Bolton, 1980). Then the mean potential temperature and water vapor mixing ratio in the lowest 50 hPa of the atmosphere was computed to define the mean-layer parcel. The pressure–temperature intersection of the mean-layer parcel potential temperature isopleth with the mixing ratio isopleth defined the MLLCL. The difference between the mean-layer parcel surface temperature and MLLCL temperature was used with the dry adiabatic lapse rate to calculate the LCL altitude.

The TWI is a layer often present in the atmosphere in the trade-wind latitudes characterized by a reversal of the usual negative temperature gradient to a positive gradient of warming with increasing altitude. A TWI base was determined from each radiosonde profile following published methods (Cao et al., 2007). The ascending radiosonde instruments recorded measurements at uneven intervals of roughly 50–300 m at the altitudes and time periods of interest to this study. The bounding altitudes containing the TWI base were determined by setting the upper bound as the lowest altitude observation with positive temperature gradient dT_p/dz between itself and the next highest observation, greater than 0 °C temperature and 0 % RH, with pressure between 70 and 95 kPa. The pressure bounds are for the Atlantic Ocean TWI (Augstein et al., 1974). The lower bounding altitude was set as the observation one below the upper bounding altitude, which necessarily had a negative temperature gradient dT_n/dz below it. Inside the bounding altitude layer, the temperature gradients were then assumed to equal the positive gradient dT_p/dz above the TWI base and the negative gradient dT_n/dz below the TWI base. The intersection of these two lines of constant positive and negative gradient inside the bounding layer was set as the TWI base altitude.

The Supplement related to this article is available online at <https://doi.org/10.5194/acp-17-7245-2017-supplement>.

Competing interests. The authors declare that they have no conflict of interest.

Acknowledgements. The Luquillo Critical Zone Observatory (EAR-1331841) and grant DEB 1239764 from the US National Science Foundation to the Institute for Tropical Ecosystem Studies, University of Puerto Rico, and to the International Institute of Tropical Forestry (IITF) USDA Forest Service, as part of the Luquillo Long-Term Ecological Research Program, supported this research. The US Forest Service (Department of Agriculture) Research Unit, the US Geological Survey Climate and Land Use Change WEBB Program, and the University of Puerto Rico gave additional support. Samuel Moya, Carlos Estrada, and Carlos Torrens provided field assistance. William A. Gould, Ariel E. Lugo, Paul W. Miller, and Sheila F. Murphy provided comments on the manuscript, and we thank the anonymous reviewers whose comments improved the paper. Any use of trade, product, or firms' names is for descriptive purposes only and does not imply endorsement by the US Government.

Edited by: A. Sorooshian

Reviewed by: D. Baumgardner and two anonymous referees

References

- Alvarado-Barrientos, M. S., Holwerda, F., Asbjornsen, H., Dawson, T. E., and Bruijnzeel, L. A.: Suppression of transpiration due to cloud immersion in a seasonally dry Mexican weeping pine plantation, *Agr. Forest Meteorol.*, 186, 12–25, <https://doi.org/10.1016/j.agrformet.2013.11.002>, 2014.
- Augstein, E., Schmidt, H., and Ostapoff, F.: The vertical structure of the atmospheric planetary boundary layer in undisturbed trade winds over the Atlantic Ocean, *Bound.-Lay. Meteorol.*, 6, 129–150, <https://doi.org/10.1007/BF00232480>, 1974.
- Bolton, D.: The Computation of Equivalent Potential Temperature, *Mon. Weather Rev.*, 108, 1046–1053, [https://doi.org/10.1175/1520-0493\(1980\)108<1046:TCOEPT>2.0.CO;2](https://doi.org/10.1175/1520-0493(1980)108<1046:TCOEPT>2.0.CO;2), 1980.
- Brueck, M., Nuijens, L., and Stevens, B.: On the Seasonal and Synoptic Time-Scale Variability of the North Atlantic Trade Wind Region and Its Low-Level Clouds, *J. Atmos. Sci.*, 72, 1428–1446, <https://doi.org/10.1175/JAS-D-14-0054.1>, 2014.
- Bruijnzeel, L. A., Mulligan, M., and Scatena, F. N.: Hydrometeorology of tropical montane cloud forests: emerging patterns, *Hydrol. Process.*, 25, 465–498, <https://doi.org/10.1002/hyp.7974>, 2011.
- Cao, G., Giambelluca, T. W., Stevens, D. E., and Schroeder, T. A.: Inversion Variability in the Hawaiian Trade Wind Regime, *J. Climate*, 20, 1145–1160, <https://doi.org/10.1175/JCLI4033.1>, 2007.
- Carrillo, J., Guerra, J. C., Cuevas, E., and Barrancos, J.: Characterization of the Marine Boundary Layer and the Trade-Wind Inversion over the Sub-tropical North Atlantic, *Bound.-Lay. Meteorol.*, 158, 311–330, <https://doi.org/10.1007/s10546-015-0081-1>, 2015.
- Cavelier, J. and Goldstein, G.: Mist and fog interception in elfin cloud forests in Colombia and Venezuela, *J. Trop. Ecol.*, 5, 309–322, <https://doi.org/10.1017/S0266467400003709>, 1989.
- Clark, K. E., Shanley, J. B., Scholl, M. A., Perdrial, N., Perdrial, J. N., Plante, A. F., and McDowell, W. H.: Tropical river suspended sediment and solute dynamics in storms during an extreme drought, *Water Resour. Res.*, <https://doi.org/10.1002/2016WR019737>, online first, 2017.
- Comarazamy, D. E. and González, J. E.: Regional long-term climate change (1950–2000) in the midtropical Atlantic and its impacts on the hydrological cycle of Puerto Rico, *J. Geophys. Res.-Atmos.*, 116, 1–18, <https://doi.org/10.1029/2010JD015414>, 2011.
- Costa-Surós, M., Calbó, J., González, J. A., and Martín-Vide, J.: Behavior of cloud base height from ceilometer measurements, *Atmos. Res.*, 127, 64–76, <https://doi.org/10.1016/j.atmosres.2013.02.005>, 2013.
- Craven, J. P., Jewell, R. E., and Brooks, H. E.: Comparison between Observed Convective Cloud-Base Heights and Lifting Condensation Level for Two Different Lifted Parcels, *Weather Forecast.*, 17, 885–890, [https://doi.org/10.1175/1520-0434\(2002\)017<0885:CBOCCB>2.0.CO;2](https://doi.org/10.1175/1520-0434(2002)017<0885:CBOCCB>2.0.CO;2), 2002.
- Durre, I., Williams, C. N., Yin, X., and Vose, R. S.: Radiosonde-based trends in precipitable water over the Northern Hemisphere: An update, *J. Geophys. Res.-Atmos.*, 114, D05112, <https://doi.org/10.1029/2008JD010989>, 2009.
- Eller, C. B., Lima, A. L., and Oliveira, R. S.: Foliar uptake of fog water and transport belowground alleviates drought effects in the cloud forest tree species, *Drimys brasiliensis* (Winteraceae), *New Phytol.*, 199, 151–162, <https://doi.org/10.1111/nph.12248>, 2013.
- Eugster, W., Burkard, R., Holwerda, F., Scatena, F. N., and Bruijnzeel, L. A. (Sampurno): Characteristics of fog and fogwater fluxes in a Puerto Rican elfin cloud forest, *Agr. Forest Meteorol.*, 139, 288–306, <https://doi.org/10.1016/j.agrformet.2006.07.008>, 2006.
- Foster, P.: The potential negative impacts of global climate change on tropical montane cloud forests, *Earth-Sci. Rev.*, 55, 73–106, [https://doi.org/10.1016/S0012-8252\(01\)00056-3](https://doi.org/10.1016/S0012-8252(01)00056-3), 2001.
- Giambelluca, T. W., DeLay, J. K., Nullet, M. A., Scholl, M. A., and Gingerich, S. B.: Canopy water balance of windward and leeward Hawaiian cloud forests on Haleakalā, Maui, Hawai'i, *Hydrol. Process.*, 25, 438–447, <https://doi.org/10.1002/hyp.7738>, 2011.
- Giannini, A., Kushnir, Y., and Cane, M. A.: Interannual Variability of Caribbean Rainfall, ENSO, and the Atlantic Ocean*, *J. Climate*, 13, 297–311, [https://doi.org/10.1175/1520-0442\(2000\)013<0297:IVOCRE>2.0.CO;2](https://doi.org/10.1175/1520-0442(2000)013<0297:IVOCRE>2.0.CO;2), 2000.
- González, G.: Luquillo Mountains meteorological and ceilometer data, Fort Collins, CO: Forest Service Research Data Archive, <https://doi.org/10.2737/RDS-2017-0023>, 2017.
- Gotsch, S. G., Nadkarni, N., Darby, A., Glunk, A., Dix, M., Davidson, K., and Dawson, T. E.: Life in the treetops: ecophysiological strategies of canopy epiphytes in a tropical montane cloud forest, *Ecol. Monogr.*, 85, 393–412, <https://doi.org/10.1890/14-1076.1>, 2015.
- Gouirand, I., Jury, M. R., and Sing, B.: An Analysis of Low- and High-Frequency Summer Climate Variability

- around the Caribbean Antilles, *J. Climate*, 25, 3942–3952, <https://doi.org/10.1175/JCLI-D-11-00269.1>, 2012.
- Guo, P., Kuo, Y.-H., Sokolovskiy, S. V., and Lenschow, D. H.: Estimating Atmospheric Boundary Layer Depth Using COSMIC Radio Occultation Data, *J. Atmos. Sci.*, 68, 1703–1713, <https://doi.org/10.1175/2011JAS3612.1>, 2011.
- Holwerda, F., Bruijnzeel, L. A., and Scatena, F. N.: Comparison of passive fog gauges for determining fog duration and fog interception by a Puerto Rican elfin cloud forest, *Hydrol. Process.*, 25, 367–373, <https://doi.org/10.1002/hyp.7641>, 2011.
- Jarvis, A. and Mulligan, M.: The climate of cloud forests, *Hydrol. Process.*, 25, 327–343, <https://doi.org/10.1002/hyp.7847>, 2011.
- Karmalkar, A. V., Taylor, M. A., Campbell, J., Stephenson, T., New, M., Centella, A., Benzanilla, A., and Charlery, J.: A review of observed and projected changes in climate for the islands in the Caribbean, *Atmósfera*, 26, 283–309, 2013.
- Lawton, R. O., Nair, U. S., Pielke, R. A., and Welch, R. M.: Climatic Impact of Tropical Lowland Deforestation on Nearby Montane Cloud Forests, *Science*, 294, 584–587, <https://doi.org/10.1126/science.1062459>, 2001.
- Malkus, J. S.: The effects of a large island upon the trade-wind air stream, *Q. J. Roy. Meteor. Soc.*, 81, 538–550, <https://doi.org/10.1002/qj.49708135003>, 1955.
- Martin, P. H., Fahey, T. J., and Sherman, R. E.: Vegetation zonation in a neotropical montane forest: environment, disturbance and ecotones, *Biotropica*, 43, 533–543, 2011.
- Medeiros, B., Nuijens, L., Antoniazzi, C., and Stevens, B.: Low-latitude boundary layer clouds as seen by CALIPSO, *J. Geophys. Res.-Atmos.*, 115, D23207, <https://doi.org/10.1029/2010JD014437>, 2010.
- Myers, T. A. and Norris, J. R.: Observational Evidence That Enhanced Subsidence Reduces Subtropical Marine Boundary Layer Cloudiness, *J. Climate*, 26, 7507–7524, <https://doi.org/10.1175/JCLI-D-12-00736.1>, 2013.
- Nadolski, V.: Automated Surface Observing System (ASOS) user's guide, Natl. Ocean. Atmospheric Adm. Dep. Def. Fed. Aviat. Adm. U. S. Navy, 1998.
- Nuijens, L., Serikov, I., Hirsch, L., Lonitz, K., and Stevens, B.: The distribution and variability of low-level cloud in the North Atlantic trades, *Q. J. Roy. Meteor. Soc.*, 140, 2364–2374, 2014.
- Odum, H. T. and Pigeon, R. F.: A tropical rain forest: a study of irradiation and ecology at El Verde, Puerto Rico, US Atomic Energy Commission, Division of Technical Information, Washington, DC (EUA), 1970.
- Oliveira, R. S., Eller, C. B., Bittencourt, P. R. L., and Mulligan, M.: The hydroclimatic and ecophysiological basis of cloud forest distributions under current and projected climates, *Ann. Bot.*, 113, 909–920, <https://doi.org/10.1093/aob/mcu060>, 2014.
- Perez, T. M., Stroud, J. T., and Feeley, K. J.: Thermal trouble in the tropics, *Science*, 351, 1392–1393, <https://doi.org/10.1126/science.aaf3343>, 2016.
- Raga, G. B., Baumgardner, D., and Mayol-Bracero, O. L.: History of Aerosol-Cloud Interactions Derived from Observations in Mountaintop Clouds in Puerto Rico, *Aerosol Air Qual. Res.*, 16, 674–688, 2016.
- Rastogi, B., Williams, A. P., Fischer, D. T., Iacobellis, S., McEachern, K., Carvalho, L., Jones, C., Baguskas, S. A., and Still, C. J.: Spatial and temporal patterns of cloud cover and fog inundation in coastal California: Ecological implications, *Earth Interact.*, 20, 1–19, <https://doi.org/10.1175/EI-D-15-0033.1>, 2016.
- Rauber, R. M., Ochs, H. T., Di Girolamo, L., Göke, S., Snodgrass, E., Stevens, B., Knight, C., Jensen, J. B., Lenschow, D. H., Rilling, R. A., Rogers, D. C., Stith, J. L., Albrecht, B. A., Zuidema, P., Blyth, A. M., Fairall, C. W., Brewer, W. A., Tucker, S., Lasher-Trapp, S. G., Mayol-Bracero, O. L., Vali, G., Geerts, B., Anderson, J. R., Baker, B. A., Lawson, R. P., Bandy, A. R., Thornton, D. C., Burnet, E., Brenguier, J.-L., Gomes, L., Brown, P. R. A., Chuang, P., Cotton, W. R., Gerber, H., Heikes, B. G., Hudson, J. G., Kollias, P., Krueger, S. K., Nuijens, L., O'Sullivan, D. W., Siebesma, A. P., and Twohy, C. H.: Rain in shallow cumulus over the ocean: The RICO campaign, *B. Am. Meteorol. Soc.*, 88, 1912–1928, 2007.
- Ray, D. K., Welch, R. M., Lawton, R. O., and Nair, U. S.: Dry season clouds and rainfall in northern Central America: Implications for the Mesoamerican Biological Corridor, *Global Planet. Change*, 54, 150–162, <https://doi.org/10.1016/j.gloplacha.2005.09.004>, 2006.
- Richardson, A. D., Denny, E. G., Siccama, T. G., and Lee, X.: Evidence for a Rising Cloud Ceiling in Eastern North America, *J. Climate*, 16, 2093–2098, [https://doi.org/10.1175/1520-0442\(2003\)016<2093:EFARCC>2.0.CO;2](https://doi.org/10.1175/1520-0442(2003)016<2093:EFARCC>2.0.CO;2), 2003.
- Scholl, M. A. and Murphy, S. F.: Precipitation isotopes link regional climate patterns to water supply in a tropical mountain forest, eastern Puerto Rico, *Water Resour. Res.*, 50, 4305–4322, <https://doi.org/10.1002/2013WR014413>, 2014.
- Schulz, H. M., Thies, B., Chang, S.-C., and Bendix, J.: Detection of ground fog in mountainous areas from MODIS (Collection 051) daytime data using a statistical approach, *Atmos. Meas. Tech.*, 9, 1135–1152, <https://doi.org/10.5194/amt-9-1135-2016>, 2016.
- Stevens, B.: Atmospheric Moist Convection, *Annu. Rev. Earth Planet. S.*, 33, 605–643, <https://doi.org/10.1146/annurev.earth.33.092203.122658>, 2005.
- Still, C. J., Foster, P. N., and Schneider, S. H.: Simulating the effects of climate change on tropical montane cloud forests, *Nature*, 398, 608–610, <https://doi.org/10.1038/19293>, 1999.
- Taylor, M. A. and Alfaro, E. J.: Central America and the Caribbean, Climate of, in: *Encyclopedia of World Climatology*, Encyclopedia of Earth Sciences Series, edited by: Oliver, J. E., Springer Netherlands, 183–189, https://doi.org/10.1007/1-4020-3266-8_37, 2005.
- Taylor, M. A., Whyte, F. S., Stephenson, T. S., and Campbell, J. D.: Why dry? Investigating the future evolution of the Caribbean Low Level Jet to explain projected Caribbean drying, *Int. J. Climatol.*, 33, 784–792, <https://doi.org/10.1002/joc.3461>, 2013.
- Van Beusekom, A. E., González, G., and Rivera, M. M.: Short-Term Precipitation and Temperature Trends along an Elevation Gradient in Northeastern Puerto Rico, *Earth Interact.*, 19, 1–33, 2015.
- van der Molen, M. K., Dolman, A. J., Waterloo, M. J., and Bruijnzeel, L. A.: Climate is affected more by maritime than by continental land use change: A multiple scale analysis, *Global Planet. Change*, 54, 128–149, <https://doi.org/10.1016/j.gloplacha.2006.05.005>, 2006.
- Weaver, P. L.: The Colorado and Dwarf Forests of Puerto Rico's Luquillo Mountains, in: *Tropical Forests: Management and Ecology*, Ecological Studies, edited by: Lugo, A. E. and Lowe, C., Springer New York, 109–141, https://doi.org/10.1007/978-1-4612-2498-3_5, 1995.

- Weaver, P. L. and Gould, W. A.: Forest vegetation along environmental gradients in northeastern Puerto Rico, *Ecol. Bull.*, 54, 43–65, 2013.
- Williams, A. P., Schwartz, R. E., Iacobellis, S., Seager, R., Cook, B. I., Still, C. J., Husak, G., and Michaelsen, J.: Urbanization causes increased cloud base height and decreased fog in coastal Southern California, *Geophys. Res. Lett.*, 42, 1527–1536, <https://doi.org/10.1002/2015GL063266>, 2015.
- Winker, D. M., Vaughan, M. A., Omar, A., Hu, Y., Powell, K. A., Liu, Z., Hunt, W. H., and Young, S. A.: Overview of the CALIPSO Mission and CALIOP Data Processing Algorithms, *J. Atmos. Ocean. Tech.*, 26, 2310–2323, <https://doi.org/10.1175/2009JTECHA1281.1>, 2009.
- Wohl, E., Barros, A., Brunzell, N., Chappell, N. A., Coe, M., Giambelluca, T., Goldsmith, S., Harmon, R., Hendrickx, J. M. H., Juvik, J., McDonnell, J., and Ogden, F.: The hydrology of the humid tropics, *Nat. Clim. Change*, 2, 655–662, <https://doi.org/10.1038/nclimate1556>, 2012.
- Zhang, C., Wang, Y., Lauer, A., Hamilton, K., and Xie, F.: Cloud base and top heights in the Hawaiian region determined with satellite and ground-based measurements, *Geophys. Res. Lett.*, 39, L15706, <https://doi.org/10.1029/2012GL052355>, 2012.